

16 Appendix E Vegetation Zones Associated with Hydraulic Modeling in Bypass

See Page 2



Alternative 2
Bypass Inundation
Oct 27, 2011

Legend

- Bypass Levee
- Riparian Vegetation Zone

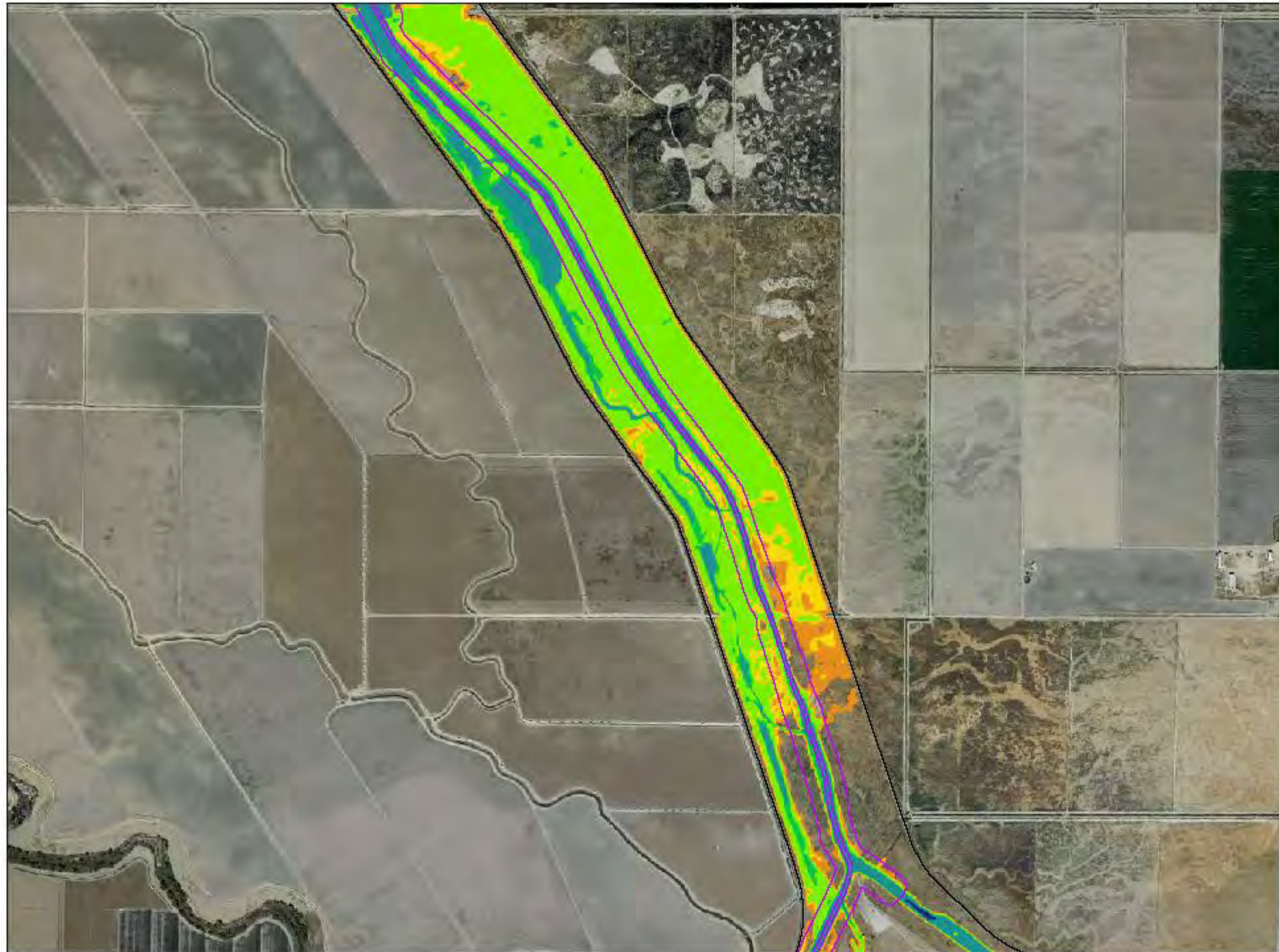
**Inundation 2200 cfs
depth (ft)**

- dry
- 0 - 0.43
- 0.43 - 0.82
- 0.82 - 2.66
- 2.66 - 3.83
- 3.83 - 10
- 10 - 30

0 1,000 2,000
Feet

Sedimentation and River
Hydraulics Group
Technical Service Center
Bureau of Reclamation
Denver, CO

See Page 3





See Page 1

2






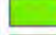



Alternative 2
Bypass Inundation
Oct 27, 2011

Legend

-  Bypass Levee
-  Riparian Vegetation Zone

Inundation 2200 cfs

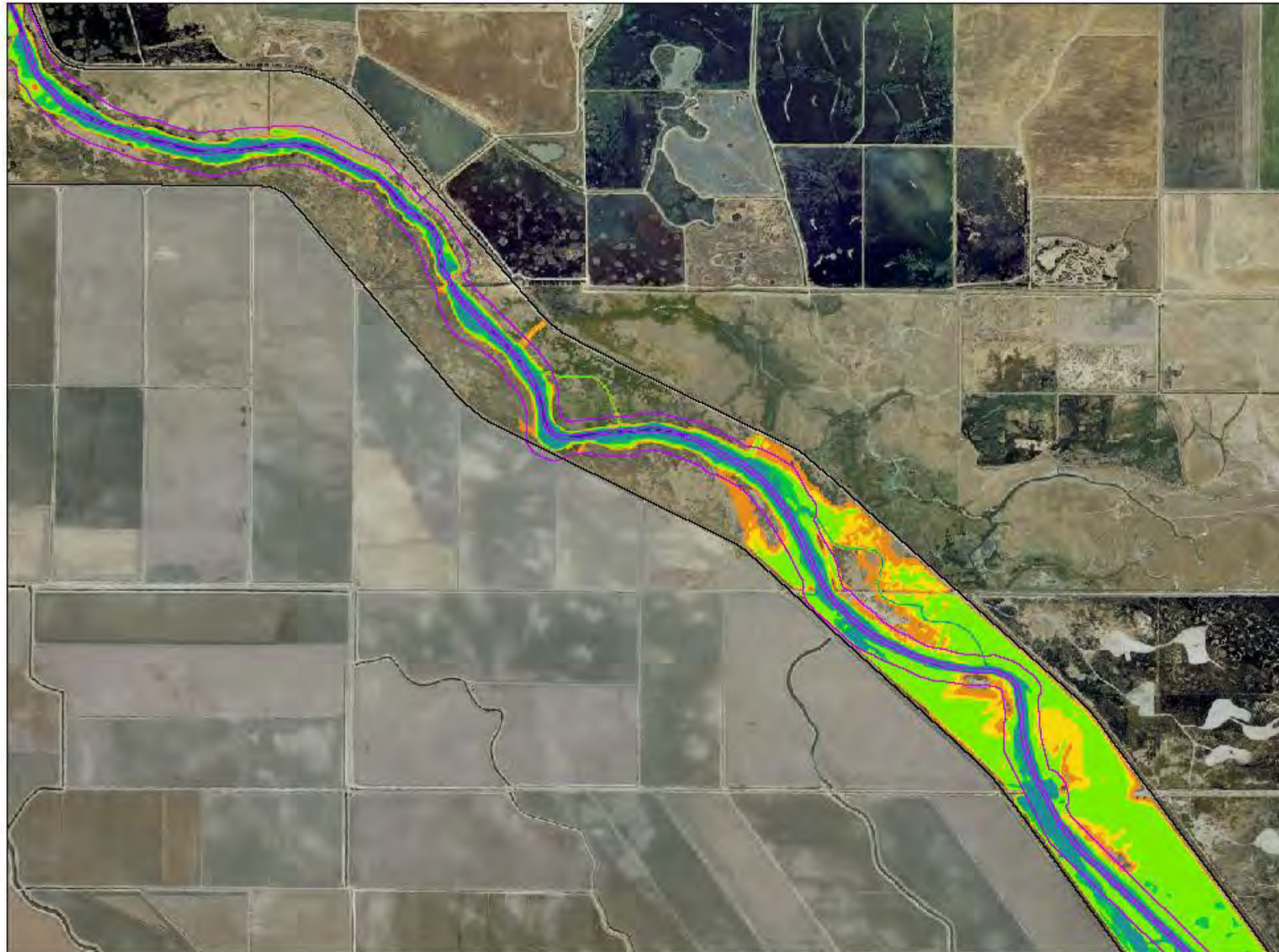
depth (ft)

-  dry
-  0 - 0.43
-  0.43 - 0.82
-  0.82 - 2.66
-  2.66 - 3.83
-  3.83 - 10
-  10 - 30

0 1,000 2,000
Feet

Sedimentation and River
Hydraulics Group
Technical Service Center
Bureau of Reclamation
Denver, CO

See Page 4



See Page 2

3



Alternative 2
Bypass Inundation
Oct 27, 2011

Legend

- Bypass Levee
- Riparian Vegetation Zone

Inundation 2200 cfs

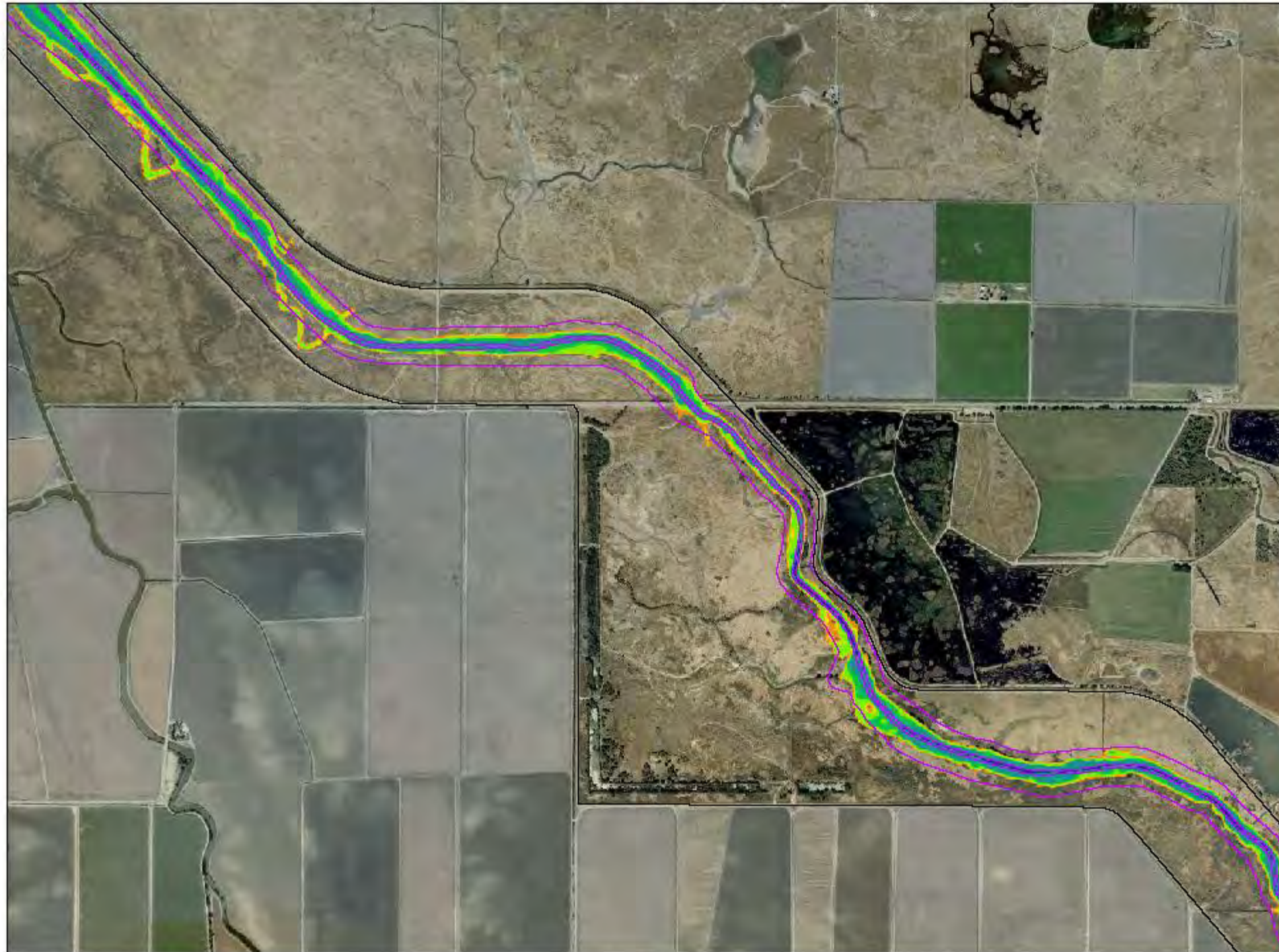
depth (ft)

- dry
- 0 - 0.43
- 0.43 - 0.82
- 0.82 - 2.66
- 2.66 - 3.83
- 3.83 - 10
- 10 - 30

0 1,000 2,000
Feet



Sedimentation and River
Hydraulics Group
Technical Service Center
Bureau of Reclamation
Denver, CO

See Page 5





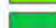




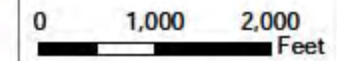
Alternative 2
Bypass Inundation
Oct 27, 2011

Legend

-  Bypass Levee
-  Riparian Vegetation Zone

**Inundation 2200 cfs
depth (ft)**

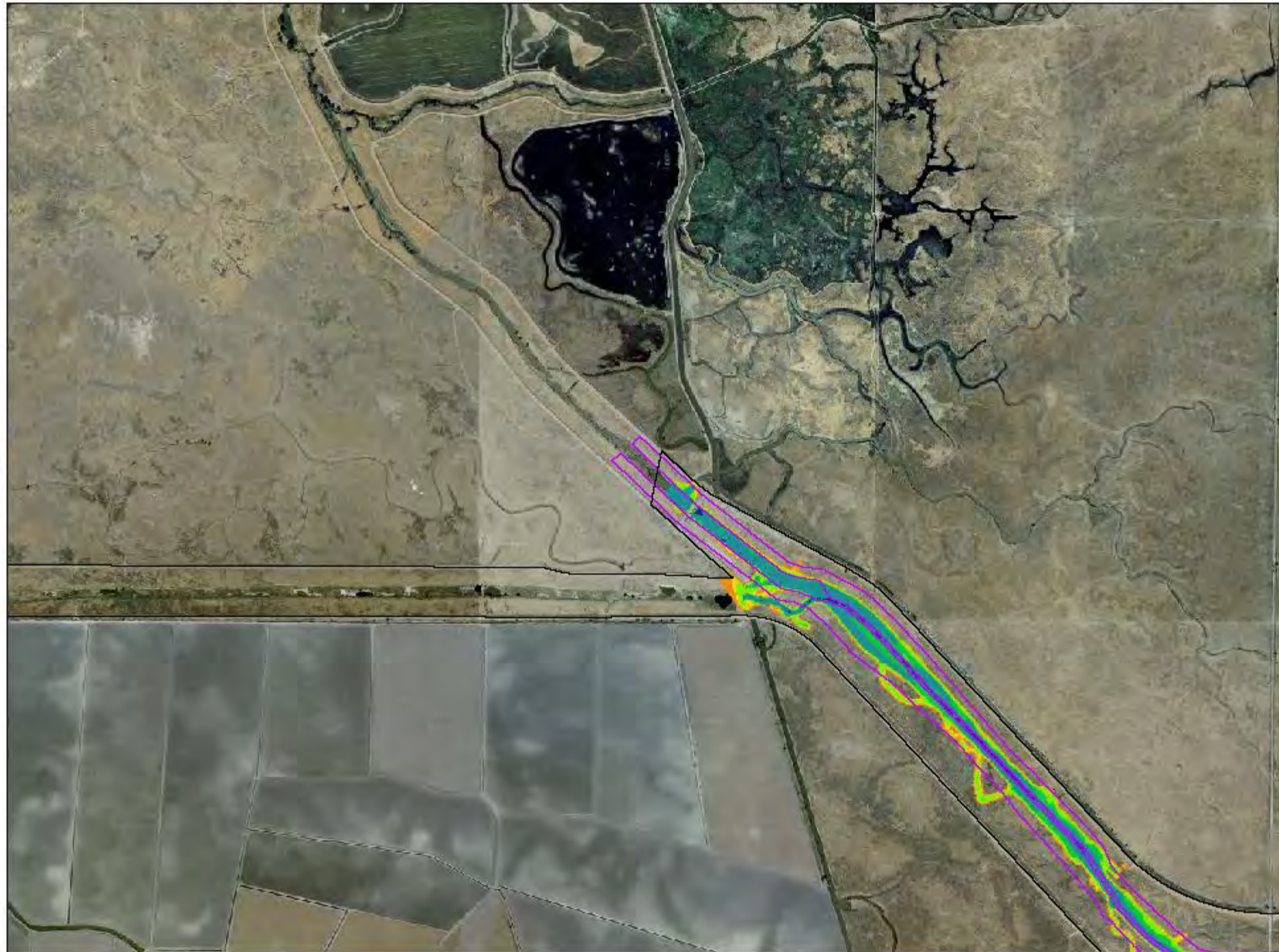
-  dry
-  0 - 0.43
-  0.43 - 0.82
-  0.82 - 2.66
-  2.66 - 3.83
-  3.83 - 10
-  10 - 30



Sedimentation and River
Hydraulics Group
Technical Service Center
Bureau of Reclamation
Denver, CO

See Page 3

See Page 6



Alternative 2
Bypass Inundation
Oct 27, 2011

Legend

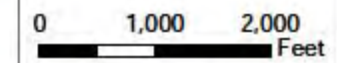
- Bypass Levee
- Riparian Vegetation Zone

Inundation 2200 cfs

depth (ft)

- dry
- 0 - 0.43
- 0.43 - 0.82
- 0.82 - 2.66
- 2.66 - 3.83
- 3.83 - 10
- 10 - 30

See Page 4



Sedimentation and River
Hydraulics Group
Technical Service Center
Bureau of Reclamation
Denver, CO