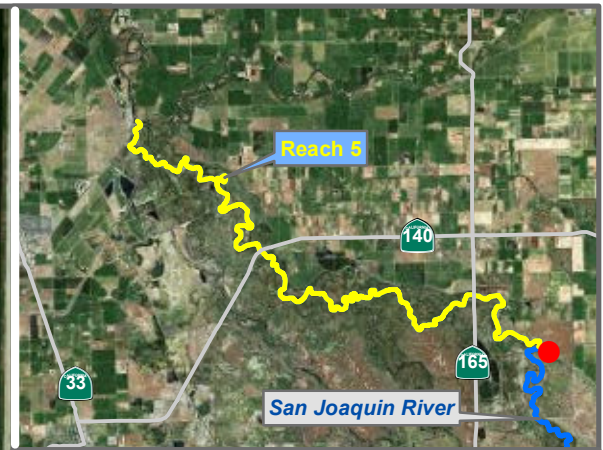


RECLAMATION
Managing Water in the West

Reach 5 Temperature Monitoring Sites

Preliminary Data





Reach = 5
 River Mile = NA
 Merced County
 Right Bank

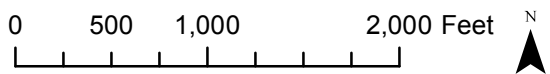
X = -120.8240 Y = 37.2779 Status = Existing
 (Horizontal Datum is NAD83)
 Distance From River Centerline (ft)=
 Reference Elevation (ft NAVD88) =
 Site = Bear Creek Upstream of Confluence with SJR

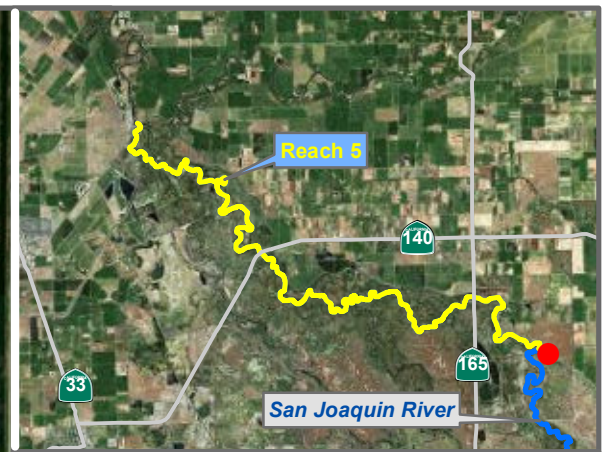
Agency = USBR
 Measurements:
 Type = Datalogger
 Interval = Hourly
 Timeseries unavailable

Description:
 Cabled to 2 ft dia. willow tree at outfall of drainage swale. 30 ft downstream of BEARBRKUSCONFSJRA.

Ground Surface Elevation (ft) =
 Monitoring Depth (ft) =

Monitoring Location BCKCONFA





Reach = 5
 River Mile = NA
 Merced County
 Right Bank

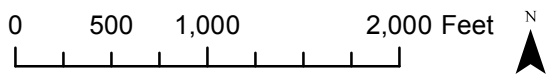
X = -120.8241 Y = 37.2779 Status = Existing
 (Horizontal Datum is NAD83)
 Distance From River Centerline (ft)=
 Reference Elevation (ft NAVD88) =
 Site = Bear Creek Upstream of Confluence with SJR

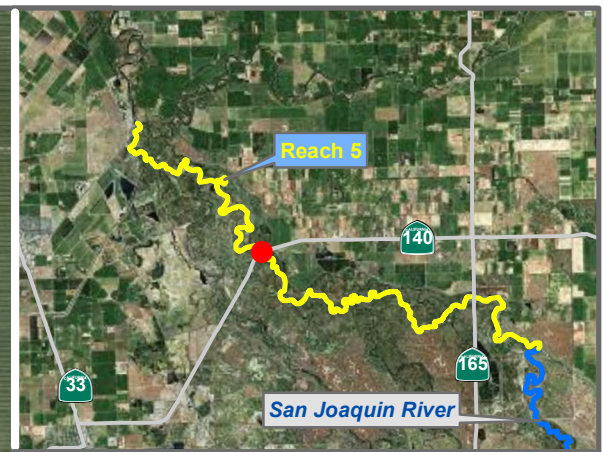
Agency = USBR
 Measurements:
 Type = Datalogger
 Interval = Hourly
 Timeseries unavailable

Description:
 Cabled to 5 ft dia. willow tree at outfall of drainage swale. 30 ft upstream of BEARBRKUSCONFSJRB.

Ground Surface Elevation (ft) =
 Monitoring Depth (ft) =

Monitoring Location BCKCONF B





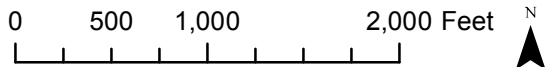
Reach = 5
 River Mile = 125.1
 Merced County
 Channel Bank

X = -120.9300 Y = 37.3100 Status = Existing
 (Horizontal Datum is NAD83)
 Distance From River (ft) = 139
 Reference Elevation (ft NAVD88) =
 Site = Fremont Ford Bridge

Agency = USGS
 Measurements:
 Type = Telemetry
 Interval = 15 min
 Date Range = 5/8/2004 - 5/8/2012

Description:
 Sensor at real-time flow gaging station

Ground Surface Elevation (ft) =
 Monitoring Depth (ft) =



 Temperature

Monitoring Location FFB



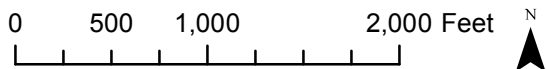
Reach = 5
 River Mile = 131.0
 Merced County
 Left Bank

X = -120.9056 Y = 37.2625 Status = Existing
 (Horizontal Datum is NAD83)
 Distance From River (ft)= 10150
 Reference Elevation (ft NAVD88) =
 Site = Mud Slough

Agency = USGS
 Measurements:
 Type = Telemetry
 Interval = 15 min
 Date Range = 6/4/2004 - 5/8/2012

Description:
 Sensor at real-time flow gaging station

Ground Surface Elevation (ft) =
 Monitoring Depth (ft) =



 Temperature

Monitoring Location MSG



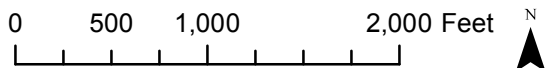
Reach = 5
 River Mile = 121.2
 Merced County
 Left Bank

X = -120.9508 Y = 37.3255 Status = Existing
 (Horizontal Datum is NAD83)
 Distance From River (ft) = 2030
 Reference Elevation (ft NAVD88) =
 Site = Mud Slough

Agency = DFG
 Measurements:
 Type = Datalogger
 Interval = Hourly
 Date Range = 6/15/2010 - 10/25/2010

Description:

Ground Surface Elevation (ft) =
 Monitoring Depth (ft) = 1 ft above gs



Temperature

Monitoring Location MUDSL



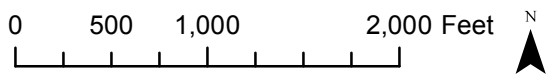
Reach = 5
 River Mile = 121.0
 Merced County
 Channel Bank

X = -120.9526 Y = 37.3339 Status = Existing
 (Horizontal Datum is NAD83)
 Distance From River (ft) = 74
 Reference Elevation (ft NAVD88) =
 Site = Newman Wasteway

Agency = DFG
 Measurements:
 Type = Datalogger
 Interval = Hourly
 Date Range = 6/15/2010 - 7/14/2010

Description:
 Upstream of Newman Wasteway - data still needs to be retrieved for IFP

Ground Surface Elevation (ft) =
 Monitoring Depth (ft) = 1 ft above gs



Monitoring Location SJANMW



SJBSALT-SJRSALT-SJRBSS

Reach = 5
 River Mile = 127.5
 Merced County
 Left Bank

X = -120.8990 Y = 37.2940 Status = Existing
 (Horizontal Datum is NAD83)
 Distance From River (ft) = 6
 Reference Elevation (ft NAVD88) =
 Site = Salt Slough

Agency = DFG
 Measurements:
 Type = Datalogger
 Interval = Hourly
 Timeseries unavailable

Description:
 downstream of Salt Slough confluence - data still
 needs to be retrieved for IFP

Ground Surface Elevation (ft) =
 Monitoring Depth (ft) = 1 ft above gs

0 500 1,000 2,000 Feet



Temperature

Monitoring Location

SJBSALT-SJRSALT-SJRBSS



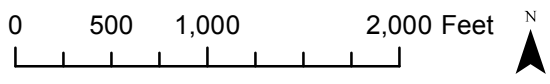
Reach = 5
 River Mile = 118.5
 Stanislaus County
 Channel Bank

X = -120.9761 Y = 37.3470 Status = Existing
 (Horizontal Datum is NAD83)
 Distance From River (ft) = 14
 Reference Elevation (ft NAVD88) =
 Site = Merced Confluence

Agency = DFG
 Measurements:
 Type = Datalogger
 Interval = Hourly
 Timeseries unavailable

Description:
 Downstream of Hills Ferry barrier - data still needs
 to be retrieved for IFP

Ground Surface Elevation (ft) =
 Monitoring Depth (ft) = 1 ft above gs



Monitoring Location SJHF



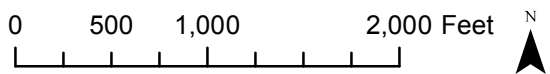
Reach = 5
 River Mile = 125.0
 Merced County
 Channel Bank

X = -120.9305 Y = 37.3099 Status = Existing
 (Horizontal Datum is NAD83)
 Distance From River (ft)= 4
 Reference Elevation (ft NAVD88) =
 Site = Fremont Ford Bridge

Agency = DFG
 Measurements:
 Type = Datalogger
 Interval = Hourly
 Timeseries unavailable

Description:

Ground Surface Elevation (ft) =
 Monitoring Depth (ft) = 1 ft above gs



Monitoring Location SJRFFB



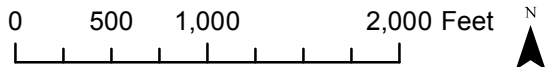
Reach = 5
 River Mile = 118.5
 Stanislaus County
 Channel Bank

X = -120.9760 Y = 37.3470 Status = Existing
 (Horizontal Datum is NAD83)
 Distance From River (ft) = 10
 Reference Elevation (ft NAVD88) =
 Site = Merced Confluence

Agency = DFG
 Measurements:
 Type = Datalogger
 Interval = Hourly
 Timeseries unavailable

Description:
 downstream of Merced River confluence

Ground Surface Elevation (ft) =
 Monitoring Depth (ft) = 1 ft above gs



 Temperature

Monitoring Location SJRMR



Reach = 5
 River Mile = 118.5
 Stanislaus County
 Left Bank

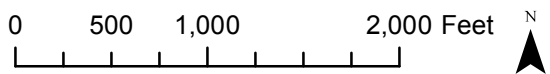
X = -120.9761 Y = 37.3470 Status =
 (Horizontal Datum is NAD83)
 Distance From River (ft) = 14
 Reference Elevation (ft NAVD88) =
 Site = San Mateo Crossing

Agency = DFG
 Measurements:
 Type = Datalogger
 Interval =
 Date Range = 4/19/2011 - 12/22/2011

Description:
 Attached to stream guage at San Mateo Road
 crossing

Ground Surface Elevation (ft) =
 Monitoring Depth (ft) =

Monitoring Location SJRSM





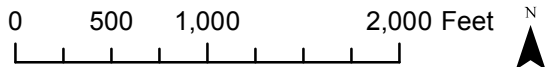
Reach = 5
River Mile = 132.8
Merced County
Channel Bank

X = -120.8500 Y = 37.2960 Status = Existing
(Horizontal Datum is NAD83)
Distance From River (ft) = 334
Reference Elevation (ft NAVD88) =
Site = Stevinson Bridge

Agency = DFG
Measurements:
Type = Datalogger
Interval = Hourly
Date Range = 7/31/2008 - 10/26/2010

Description:
Hwy 140 bridge - data still needs to be retrieved for
IFP

Ground Surface Elevation (ft) =
Monitoring Depth (ft) = 1 ft above gs



 Temperature

Monitoring Location SJRSTV



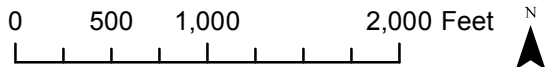
Reach = 5
 River Mile = 132.8
 Merced County
 Channel Bank

X = -120.8510 Y = 37.2950 Status = Existing
 (Horizontal Datum is NAD83)
 Distance From River (ft) = 92
 Reference Elevation (ft NAVD88) =
 Site = Stevinson

Agency = DWR
 Measurements:
 Type = Telemetry
 Interval = Hourly
 Date Range = 12/6/2011 - 5/8/2012

Description:
 Sensor at real-time flow gaging station

Ground Surface Elevation (ft) =
 Monitoring Depth (ft) =



 Temperature

Monitoring Location SJS



Reach = 5
 River Mile = 118.4
 Stanislaus County
 Channel Bank

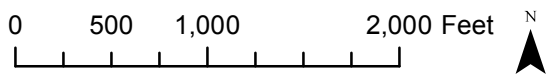
X = -120.9751 Y = 37.3473 Status = Existing
 (Horizontal Datum is NAD83)
 Distance From River (ft) = 22
 Reference Elevation (ft NAVD88) =
 Site = Near Newman

Agency = USGS
 Measurements:
 Type = Telemetry
 Interval = 15 min
 Timeseries unavailable

Description:
 Sensor at real-time flow gaging station

Ground Surface Elevation (ft) =
 Monitoring Depth (ft) =

Monitoring Location SMN





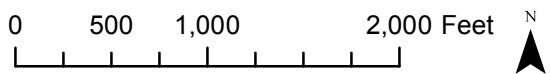
Reach = 5
 River Mile = 139.0
 Merced County
 Left Bank

X = -120.8511 Y = 37.2478 Status = Existing
 (Horizontal Datum is NAD83)
 Distance From River (ft) = 8353
 Reference Elevation (ft NAVD88) =
 Site = Salt Slough

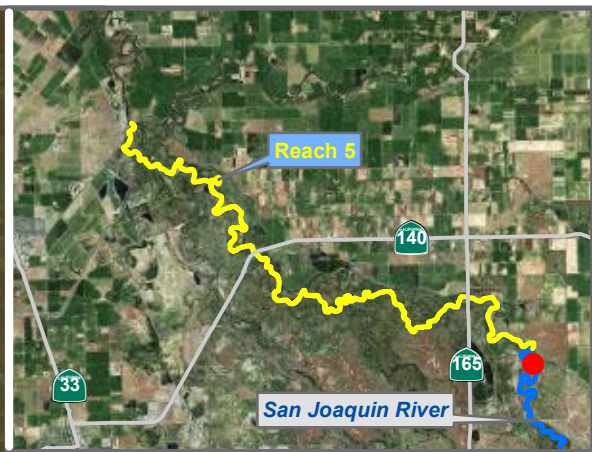
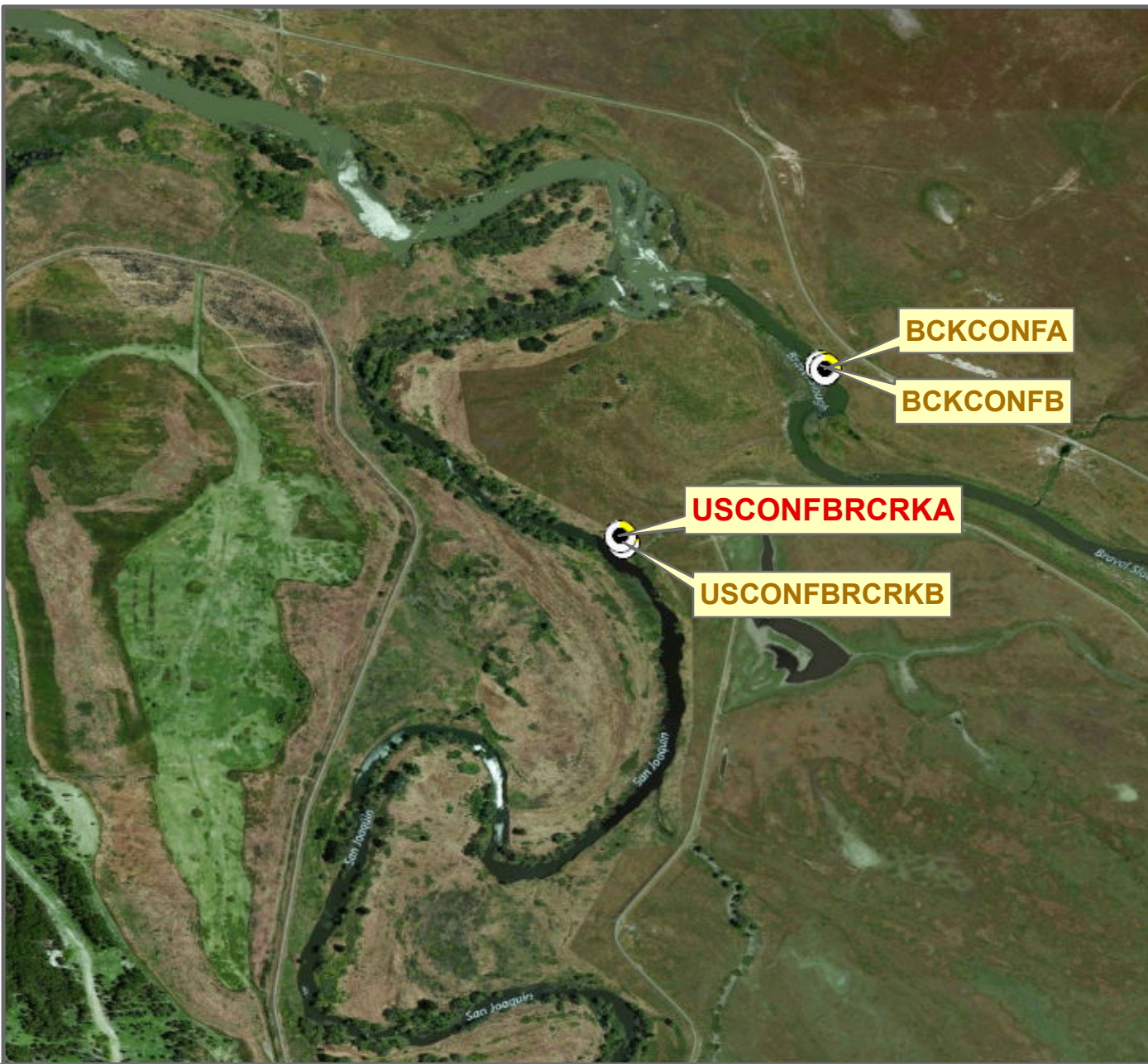
Agency = USGS
 Measurements:
 Type = Telemetry
 Interval = 15 min
 Date Range = 1/1/2009 - 5/8/2012

Description:
 Sensor at real-time flow gaging station

Ground Surface Elevation (ft) =
 Monitoring Depth (ft) =



Monitoring Location SSH



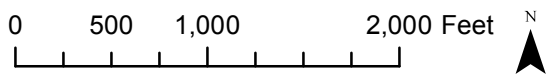
Reach = 5
 River Mile = 136.4
 Merced County
 Right Bank

X = -120.8276 Y = 37.2750 Status = Existing
 (Horizontal Datum is NAD83)
 Distance From River Centerline (ft)=
 Reference Elevation (ft NAVD88) =
 Site = SJR Upstream of Confluence with Bear
 Creek

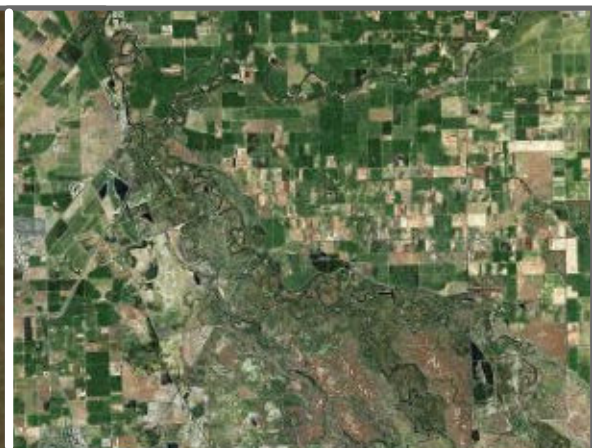
Agency = USBR
 Measurements:
 Type = Datalogger
 Interval = Hourly
 Timeseries unavailable

Description:
 Cabled to willow tree downstream of access ramp
 from levee road. 20 ft downstream of
 SJRCONFBEARCREKB.

Ground Surface Elevation (ft) =
 Monitoring Depth (ft) =



Monitoring Location USCONFBRCKA



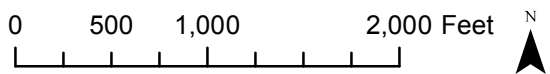
Reach = 5
 River Mile = 136.4
 Merced County
 Right Bank

X = -120.8275 Y = 37.2749 Status = Existing
 (Horizontal Datum is NAD83)
 Distance From River Centerline (ft)=
 Reference Elevation (ft NAVD88) =
 Site = SJR Upstream of Confluence with Bear
 Creek

Agency = USBR
 Measurements:
 Type = Datalogger
 Interval = Hourly
 Timeseries unavailable

Description:
 Cabled to willow tree downstream of access ramp
 from levee road. 20 ft upstream of
 SJRCONFBEARCREKA.

Ground Surface Elevation (ft) =
 Monitoring Depth (ft) =



Monitoring Location USCONFBRCKB

* = assumed value
 bgs = below ground surface
 NR = not recorded

Last Updated:
 6/28/2012
 Preliminary Data