

0 0.5 1 2 Miles

RECLAMATION
Managing Water in the West

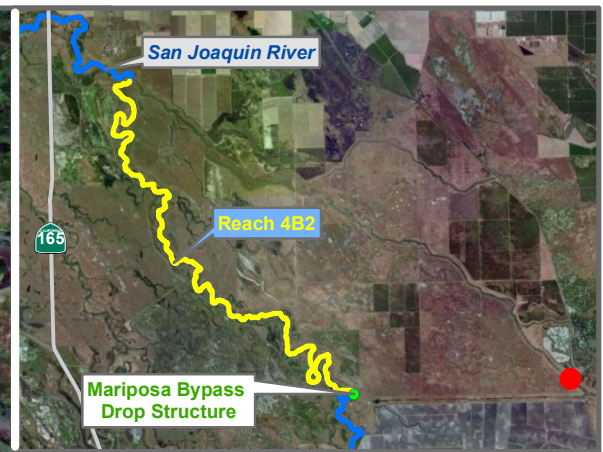


Reach 4B2 Temperature Monitoring Sites

Preliminary Data

SAN JOAQUIN RIVER
RESTORATION PROGRAM





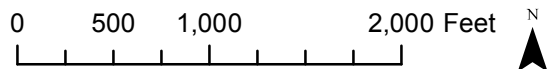
Reach = 4B2
 River Mile = 146.0
 Merced County
 Right Bank

X = -120.6983 Y = 37.2060 Status = Existing
 (Horizontal Datum is NAD83)
 Distance From River (ft) = 86
 Reference Elevation (ft NAVD88) =
 Site = Eastside Bypass ds Mariposa Bypass

Agency = USBR
 Measurements:
 Type = Datalogger
 Interval = Hour?
 Timeseries unavailable

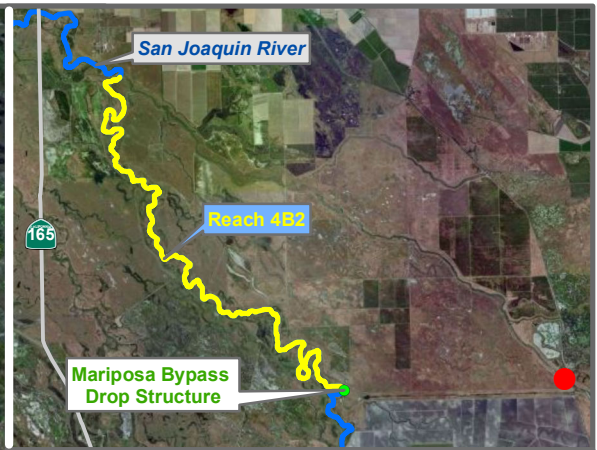
Description:
 2 inch pipe

Ground Surface Elevation (ft) =
 Monitoring Depth (ft) =



Temperature

Monitoring Location SG-146



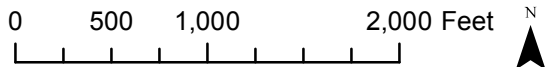
Reach = 4B2
 River Mile = Merced County Channel Bank

X = -120.6972 Y = 37.2049 Status =
 (Horizontal Datum is NAD83)
 Distance From River (ft) = 6
 Reference Elevation (ft NAVD88) =
 Site = Holding Pool B

Agency = DFG
 Measurements:
 Type = Datalogger
 Interval =
 Timeseries unavailable

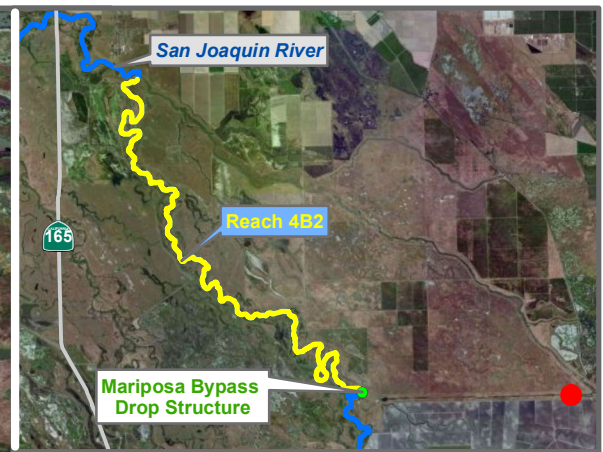
Description:
 Downstream of Volcan access. Cabled to tree on RR. Two loggers on vert. stringer (1top 2bottom)

Ground Surface Elevation (ft) =
 Monitoring Depth (ft) =



 Temperature

Monitoring Location SJRV



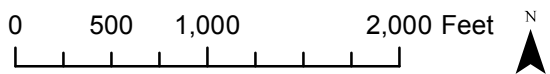
Reach = 4B2 Merced County
 River Mile =

X = -120.7005 Y = 37.2017 Status =
 (Horizontal Datum is NAD83)
 Distance From River (ft) = 8
 Reference Elevation (ft NAVD88) =
 Site = Washington Bridge

Agency = DFG
 Measurements:
 Type = Datalogger
 Interval =
 Timeseries unavailable

Description:
 Downstream of Washington Bridge (in bypass)

Ground Surface Elevation (ft) =
 Monitoring Depth (ft) =



Monitoring Location SJRWB

* = assumed value
 bgs = below ground surface
 NR = not recorded