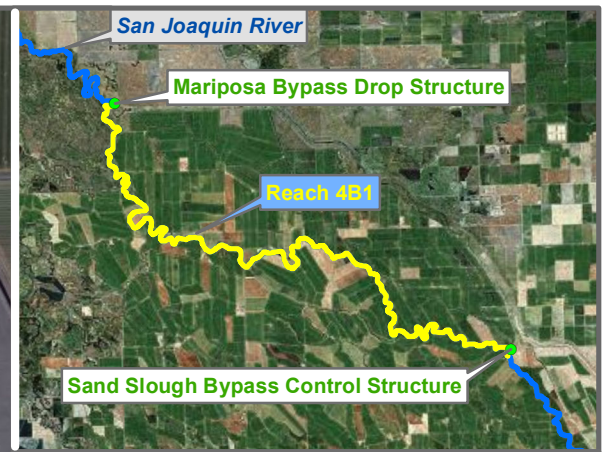


# Reach 4B1 Temperature Monitoring Sites

Preliminary Data







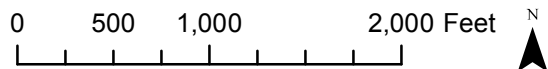
Reach = 4B1  
 River Mile = TBD  
 Merced County  
 Right Bank

X = -120.6873 Y = 37.1715 Status = Existing  
 (Horizontal Datum is NAD83)  
 Distance From River (ft) = 6515  
 Reference Elevation (ft NAVD88) = 98.40  
 Site = Bowles

Agency = USBR  
 Measurements:  
 Type = Datalogger  
 Interval = Hourly  
 Timeseries unavailable

Description:  
 2 inch PVC casing AG

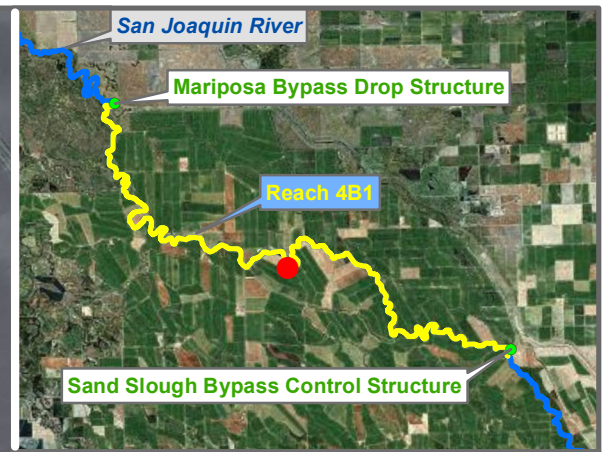
Ground Surface Elevation (ft) = 95.70  
 Monitoring Depth (ft) = 14.1 - 29.1 ft below gs



Temperature

# Monitoring Location MW-10-102





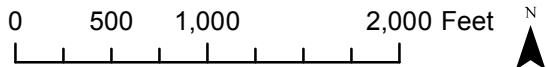
Reach = 4B1  
 River Mile = TBD  
 Merced County  
 Left Bank

X = -120.6874 Y = 37.1432 Status = Existing  
 (Horizontal Datum is NAD83)  
 Distance From River (ft) = 238  
 Reference Elevation (ft NAVD88) = 99.30  
 Site = Bowles

Agency = USBR  
 Measurements:  
 Type = Datalogger  
 Interval = Hourly  
 Timeseries unavailable

Description:  
 2 inch PVC casing AG

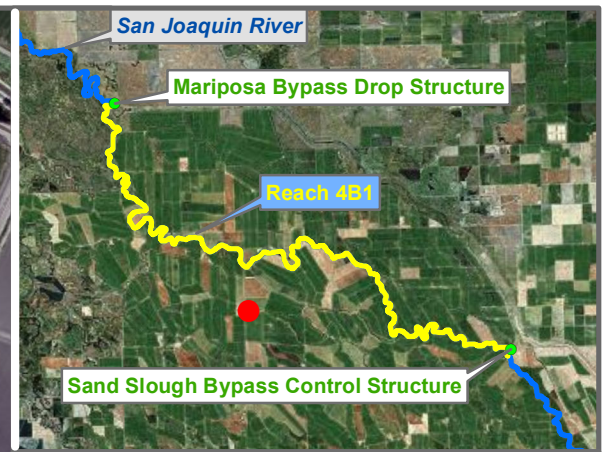
Ground Surface Elevation (ft) = 96.70  
 Monitoring Depth (ft) = 14.0 - 29.0 ft below gs



Temperature

# Monitoring Location MW-10-105





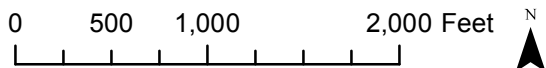
Reach = 4B1  
 River Mile = TBD  
 Status = Existing  
 (Horizontal Datum is NAD83)  
 Distance From River (ft) = 5389  
 Reference Elevation (ft NAVD88) = 98.90  
 Site = Bowles

Merced County  
 Left Bank

Agency = USBR  
 Measurements:  
 Type = Datalogger  
 Interval = Hourly  
 Timeseries unavailable

Description:  
 2 inch PVC casing AG

Ground Surface Elevation (ft) = 96.00  
 Monitoring Depth (ft) = 14.1 - 29.1 ft below gs

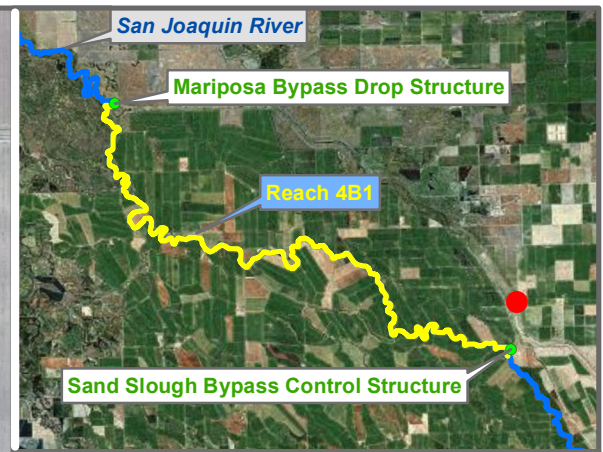


Temperature

# Monitoring Location MW-10-107

\* = assumed value  
 bgs = below ground surface  
 NR = not recorded



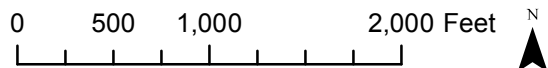


Reach = 4B1  
 River Mile = TBD  
 Merced County  
 Right Bank  
  
 X = -120.5852 Y = 37.1290 Status = Existing  
 (Horizontal Datum is NAD83)  
 Distance From River (ft)= 1061  
 Reference Elevation (ft NAVD88) = 103.90  
 Site = lest

Agency = USBR  
 Measurements:  
 Type = Datalogger  
 Interval = Hourly  
 Timeseries unavailable

Description:  
 2 inch PVC casing AG

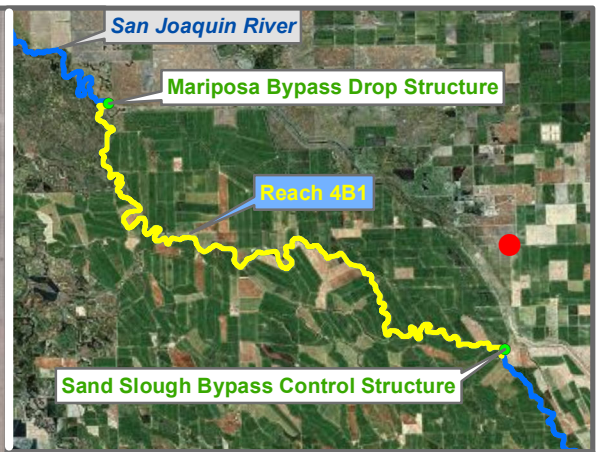
Ground Surface Elevation (ft) = 101.30  
 Monitoring Depth (ft) = 10-25 ft below gs



 Temperature

## Monitoring Location MW-10-90



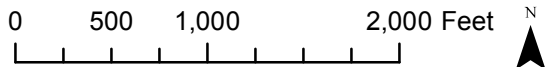


Reach = 4B1  
 River Mile = TBD  
 Merced County  
 Right Bank  
 X = -120.5852 Y = 37.1493 Status = Existing  
 (Horizontal Datum is NAD83)  
 Distance From River (ft) = 4984  
 Reference Elevation (ft NAVD88) = 103.90  
 Site = lest

Agency = USBR  
 Measurements:  
 Type = Datalogger  
 Interval = Hourly  
 Timeseries unavailable

Description:  
 2 inch PVC casing AG

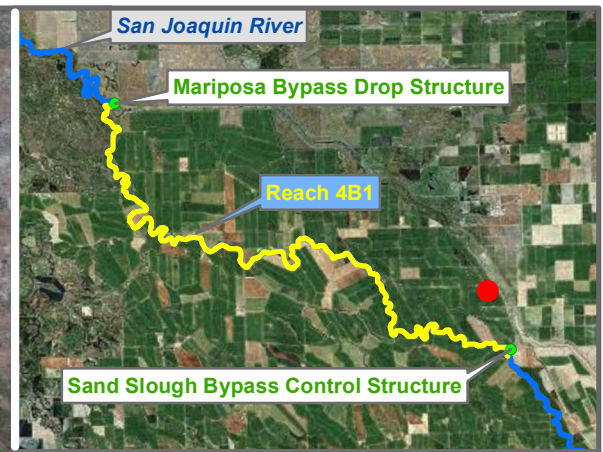
Ground Surface Elevation (ft) = 101.60  
 Monitoring Depth (ft) = 9.8 - 24.8 ft below gs



# Monitoring Location MW-10-94

\* = assumed value  
 bgs = below ground surface  
 NR = not recorded





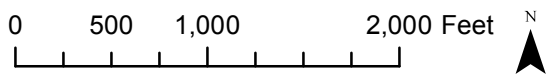
Reach = 4B1  
 River Mile = TBD  
 Merced County  
 Right Bank

X = -120.5981 Y = 37.1335 Status = Existing  
 (Horizontal Datum is NAD83)  
 Distance From River (ft)= 1792  
 Reference Elevation (ft NAVD88) = 101.70  
 Site = lest

Agency = USBR  
 Measurements:  
 Type = Datalogger  
 Interval = Hourly  
 Timeseries unavailable

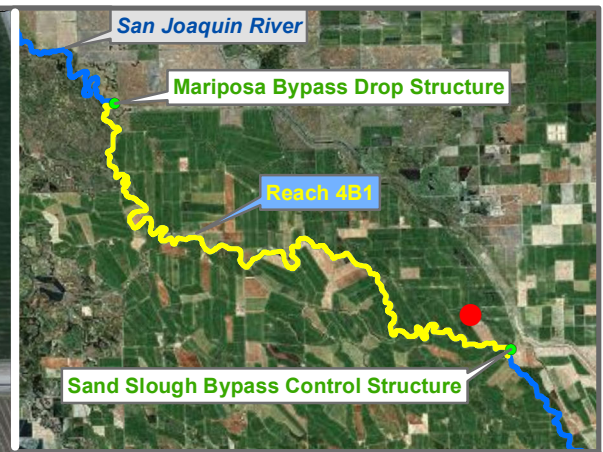
Description:  
 2 inch PVC casing AG

Ground Surface Elevation (ft) = 99.00  
 Monitoring Depth (ft) = 13.0 - 28.0 ft below gs



# Monitoring Location MW-10-95





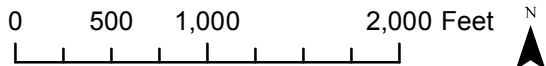
Reach = 4B1  
 River Mile = TBD  
 Merced County  
 Right Bank

X = -120.6060 Y = 37.1252 Status = Existing  
 (Horizontal Datum is NAD83)  
 Distance From River (ft) = 3116  
 Reference Elevation (ft NAVD88) = 103.00  
 Site = lest

Agency = USBR  
 Measurements:  
 Type = Datalogger  
 Interval = Hourly  
 Timeseries unavailable

Description:  
 2 inch PVC casing AG

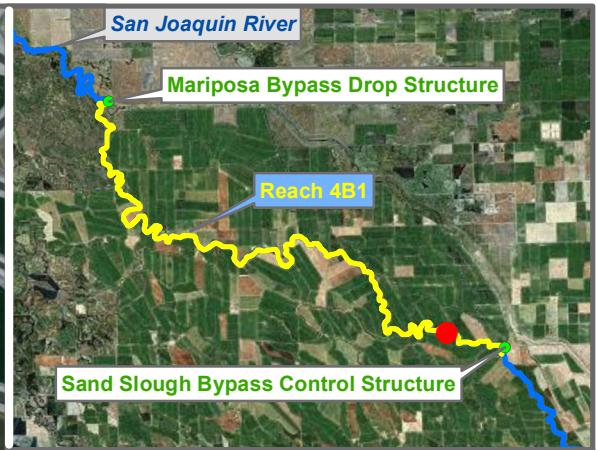
Ground Surface Elevation (ft) = 100.40  
 Monitoring Depth (ft) = 10-25 ft below gs



Temperature

# Monitoring Location MW-10-96





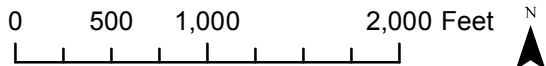
Reach = 4B1  
 River Mile = TBD  
 Merced County  
 Right Bank

X = -120.6143 Y = 37.1179 Status = Existing  
 (Horizontal Datum is NAD83)  
 Distance From River (ft) = 228  
 Reference Elevation (ft NAVD88) = 103.70  
 Site = lesl

Agency = USBR  
 Measurements:  
 Type = Datalogger  
 Interval = Hourly  
 Timeseries unavailable

Description:  
 2 inch PVC casing AG

Ground Surface Elevation (ft) = 101.20  
 Monitoring Depth (ft) = 10-25 ft below gs



 Temperature

# Monitoring Location MW-10-97