

Reach 2B

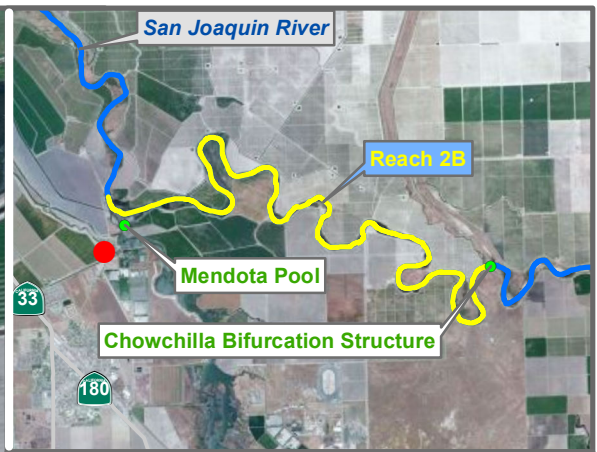
Temperature Monitoring Sites

Preliminary Data



RECLAMATION
Managing Water in the West



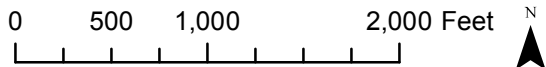



Reach = 2B
 River Mile = 205
 X = -120.3740 Y = 36.7780 Status = Existing
 (Horizontal Datum is NAD83)
 Distance From River (ft) = 2814
 Reference Elevation (ft NAVD88) =
 Site = Delta Mendota Canal Check 21

Agency = USBR
 Measurements:
 Type = Telemetry
 Interval = Hourly
 Timeseries unavailable

Description:
 Sensor at real-time flow gaging station

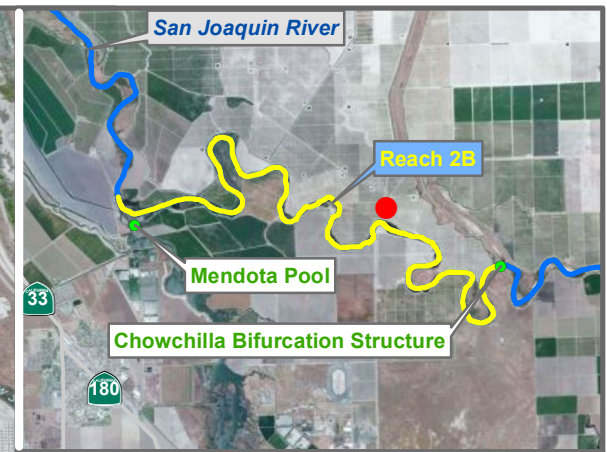
Ground Surface Elevation (ft) =
 Monitoring Depth (ft) =



 Temperature

Monitoring Location DM3

* = assumed value
 bgs = below ground surface
 NR = not recorded



Reach = 2B
 River Mile = 211.8
 Madera County
 Right Bank

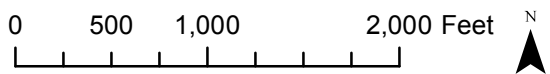
X = -120.3112 Y = 36.7847 Status = Existing
 (Horizontal Datum is NAD83)
 Distance From River (ft)= 1037
 Reference Elevation (ft NAVD88) = 162.60
 Site = San Mateo Ave.

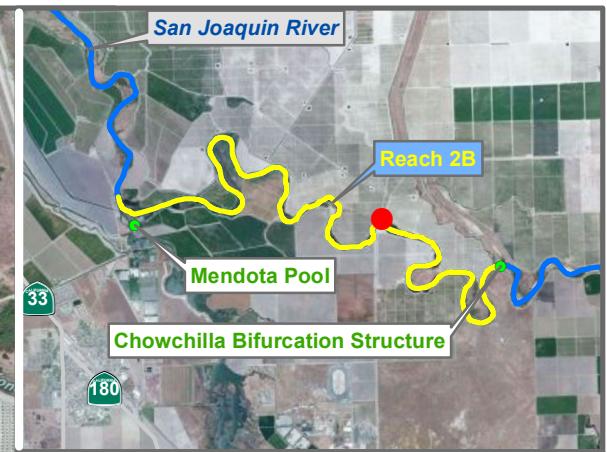
Agency = USBR
 Measurements:
 Type = Datalogger
 Interval = Hourly
 Timeseries unavailable

Description:
 2 inch PVC casing FM

Ground Surface Elevation (ft) = 162.80
 Monitoring Depth (ft) = 33.0 - 48.0 ft below gs

Monitoring Location MW-09-53





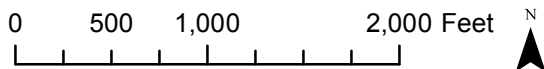
Reach = 2B
 River Mile = 211.8
 Madera County
 Right Bank

X = -120.3123 Y = 36.7826 Status = Existing
 (Horizontal Datum is NAD83)
 Distance From River (ft) = 258
 Reference Elevation (ft NAVD88) = 167.80
 Site = San Mateo Ave.

Agency = USBR
 Measurements:
 Type = Datalogger
 Interval = Hourly
 Timeseries unavailable

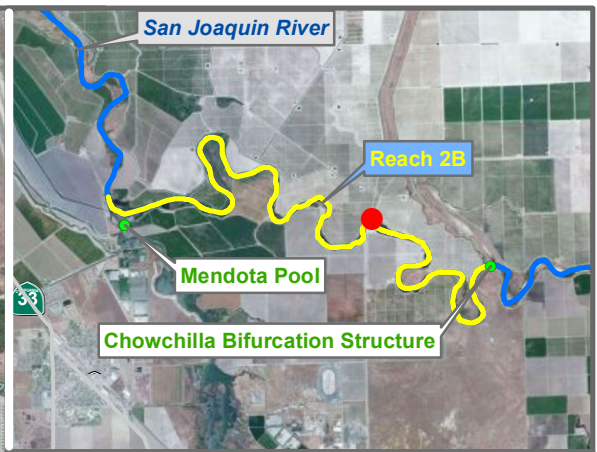
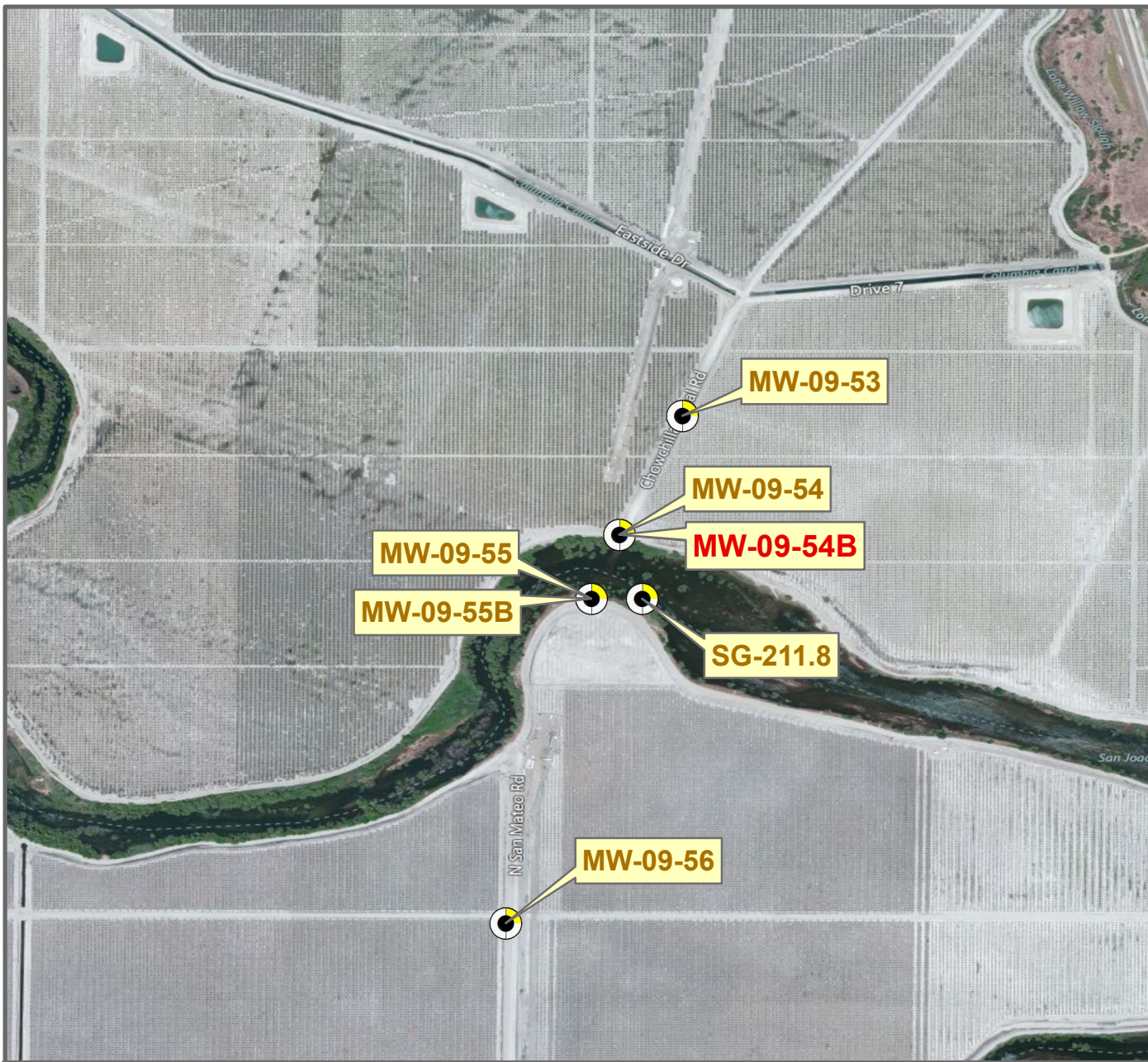
Description:
 2 inch PVC casing FM

Ground Surface Elevation (ft) = 168.00
 Monitoring Depth (ft) = 36.2 - 51.2 ft below gs



 Temperature

Monitoring Location MW-09-54



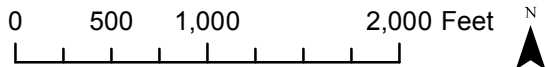
Reach = 2B
 River Mile = 211.8
 Madera County
 Right Bank

X = -120.3123 Y = 36.7826 Status = Existing
 (Horizontal Datum is NAD83)
 Distance From River (ft) = 258
 Reference Elevation (ft NAVD88) = 168.10
 Site = San Mateo Ave.

Agency = USBR
 Measurements:
 Type = Realtime
 Interval = Hourly
 Timeseries unavailable

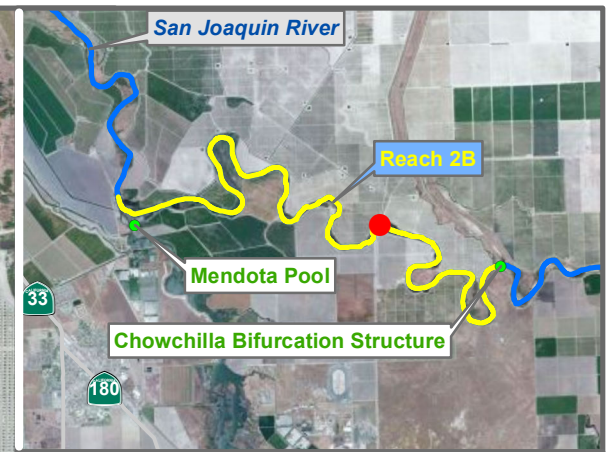
Description:
 2 inch PVC casing FM

Ground Surface Elevation (ft) = 168.20
 Monitoring Depth (ft) = 9.2 - 29.2 ft below gs



 Temperature

Monitoring Location MW-09-54B

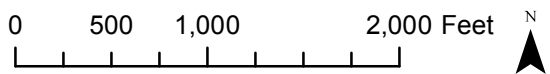


Reach = 2B
 River Mile = 211.8
 Status = Existing
 (Horizontal Datum is NAD83)
 Distance From River (ft) = 172
 Reference Elevation (ft NAVD88) = 168.70
 Site = San Mateo Ave.

Agency = USBR
 Measurements:
 Type = Datalogger
 Interval = Hourly
 Timeseries unavailable

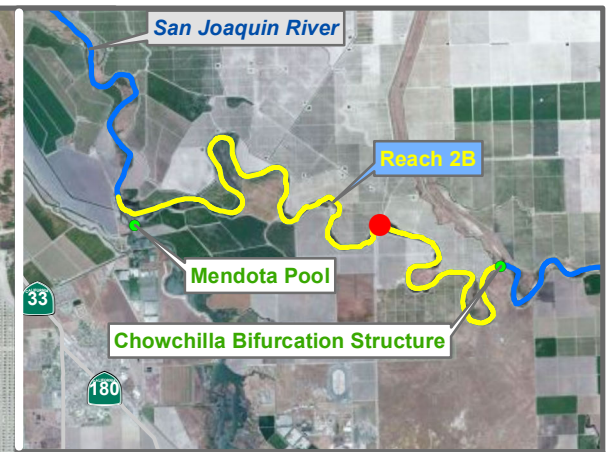
Description:
 2 inch PVC casing AG

Ground Surface Elevation (ft) = 166.10
 Monitoring Depth (ft) = 40.0 - 50.0 ft below gs



Monitoring Location MW-09-55

* = assumed value
 bgs = below ground surface
 NR = not recorded



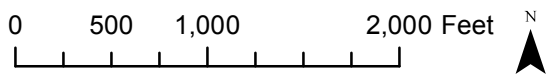
Reach = 2B
 River Mile = 211.8
 X = -120.3128 Y = 36.7815 Status = Existing
 (Horizontal Datum is NAD83)
 Distance From River (ft) = 172
 Reference Elevation (ft NAVD88) = 165.54
 Site = San Mateo Ave.


Fresno County
 Left Bank

Agency = USBR
 Measurements:
 Type = Datalogger
 Interval = Hourly
 Timeseries unavailable

Description:
 2 inch PVC casing FM

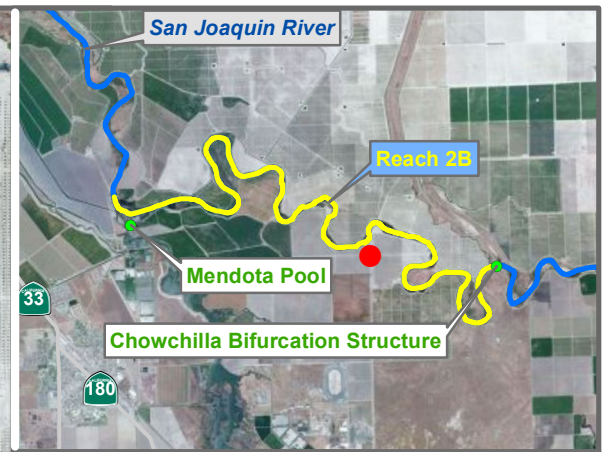
Ground Surface Elevation (ft) = 165.70
 Monitoring Depth (ft) = 10.0 - 15.0 ft below gs



 Temperature

Monitoring Location MW-09-55B

* = assumed value
 bgs = below ground surface
 NR = not recorded



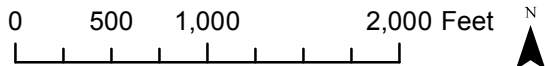
Reach = 2B
 River Mile = 211.8
 Status = Existing
 (Horizontal Datum is NAD83)
 Distance From River (ft) = 945
 Reference Elevation (ft NAVD88) = 161.01
 Site = San Mateo Ave.

Fresno County
 Left Bank

Agency = USBR
 Measurements:
 Type = Datalogger
 Interval = Hourly
 Timeseries unavailable

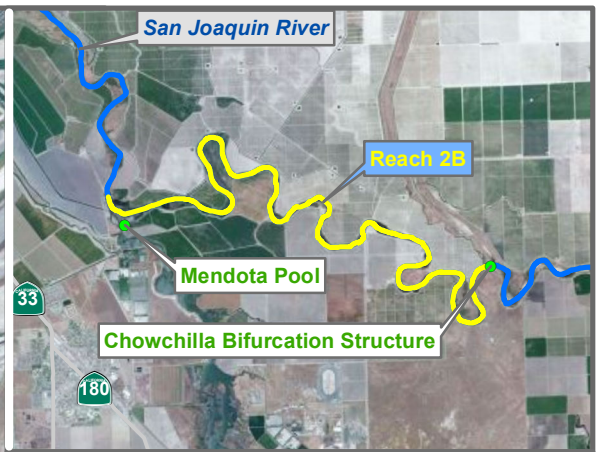
Description:
 2 inch PVC casing FM

Ground Surface Elevation (ft) = 161.20
 Monitoring Depth (ft) = 22.0 - 42.0 ft below gs



Temperature

Monitoring Location MW-09-56



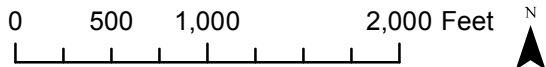
Reach = 2B
 River Mile = 211.0
 Fresno County
 Left Bank

X = -120.3428 Y = 36.7327 Status = Existing
 (Horizontal Datum is NAD83)
 Distance From River (ft)= 17460
 Reference Elevation (ft NAVD88) =
 Site = Mendota Wildlife Area 1

Agency = DFG
 Measurements:
 Type =
 Interval =
 Date Range = 6/16/2011 - 1/4/2012

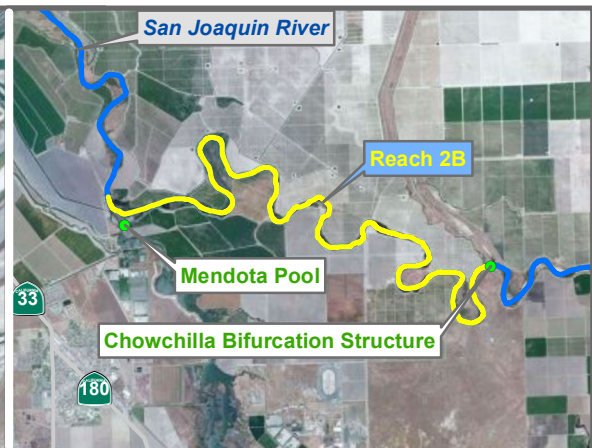
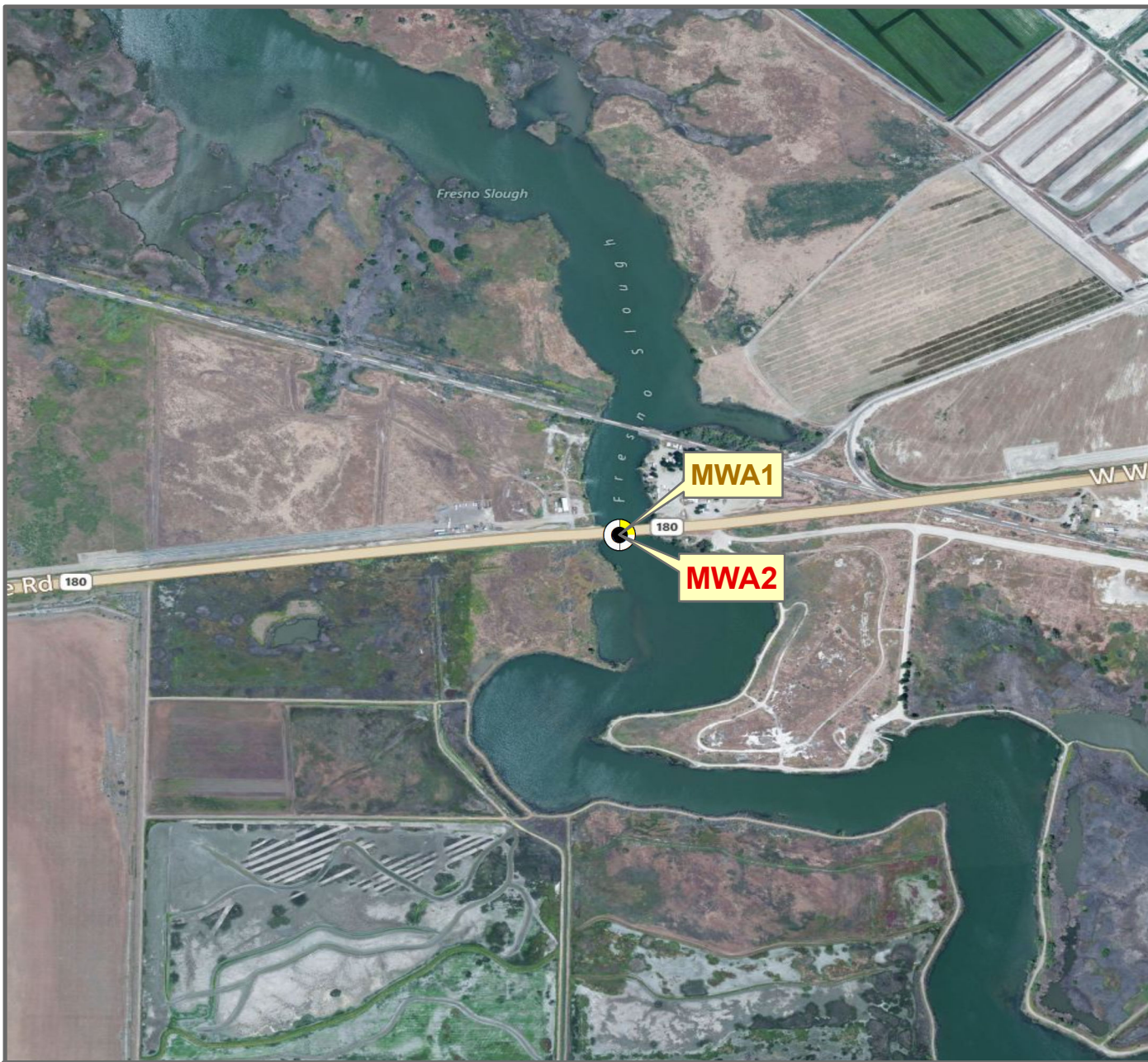
Description:

Ground Surface Elevation (ft) =
 Monitoring Depth (ft) =



Temperature

Monitoring Location MWA1



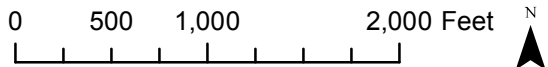
Reach = 2B
 River Mile = 211.0
 Fresno County
 Left Bank

X = -120.3428 Y = 36.7327 Status = Existing
 (Horizontal Datum is NAD83)
 Distance From River (ft)= 17460
 Reference Elevation (ft NAVD88) =
 Site = Mendota Wildlife Area 2

Agency = DFG
 Measurements:
 Type =
 Interval =
 Date Range = 6/16/2011 - 7/15/2011

Description:

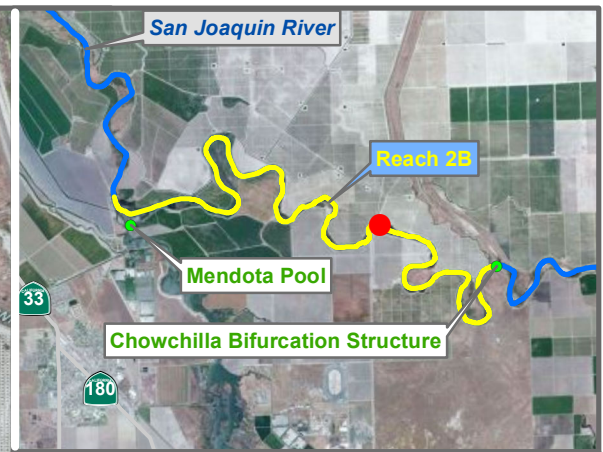
Ground Surface Elevation (ft) =
 Monitoring Depth (ft) =



Temperature

Monitoring Location MWA2

* = assumed value
 bgs = below ground surface
 NR = not recorded



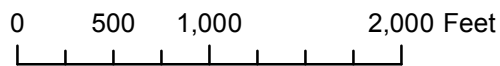
Reach = 2B
 River Mile = 211.8
 Status = Existing
 (Horizontal Datum is NAD83)
 Distance From River (ft) = 56
 Reference Elevation (ft NAVD88) =
 Site = San Mateo Ave.

Fresno County
 Left Bank

Agency = USBR
 Measurements:
 Type = Datalogger
 Interval = Hour?
 Timeseries unavailable

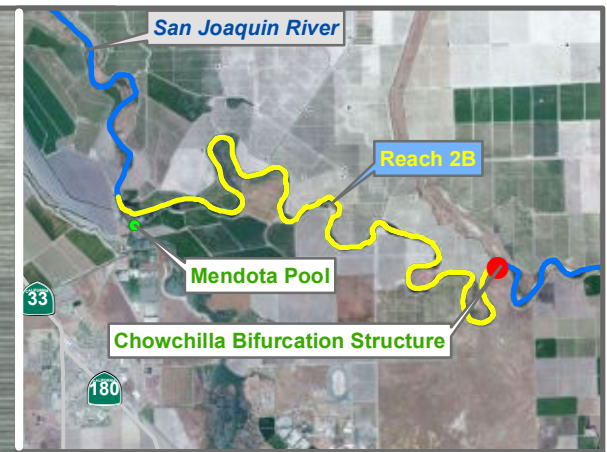
Description:

Ground Surface Elevation (ft) = 160.00
 Monitoring Depth (ft) =



Temperature

Monitoring Location SG-211.8



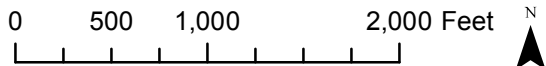
Reach = 2B
 River Mile = 215.9
 Fresno County
 Channel Bank

X = -120.2860 Y = 36.7730 Status = Existing
 (Horizontal Datum is NAD83)
 Distance From River Centerline (ft) = 107
 Reference Elevation (ft NAVD88) =
 Site = Below Bifurcation

Agency = USBR
 Measurements:
 Type = Telemetry
 Interval = 15 min
 Date Range = 11/12/2009 - 5/8/2012

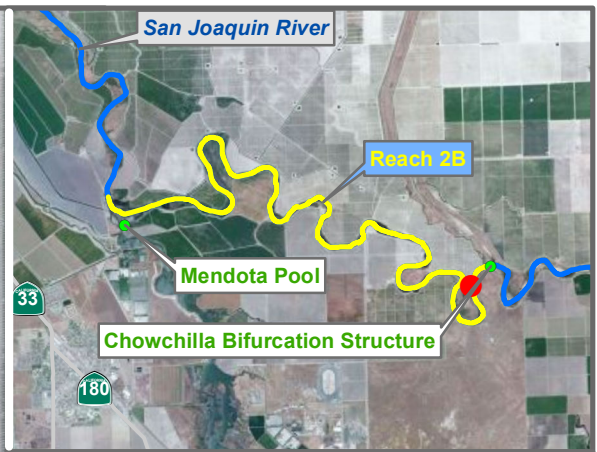
Description:
 Sensor at real-time flow gaging station

Ground Surface Elevation (ft) =
 Monitoring Depth (ft) =



 Temperature

Monitoring Location SJB



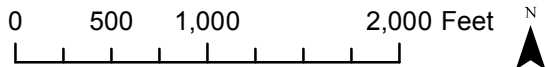
Reach = 2B
 River Mile = 215.7
 Madera County
 Right Bank

X = -120.2900 Y = 36.7697 Status = Existing
 (Horizontal Datum is NAD83)
 Distance From River Centerline (ft)=
 Reference Elevation (ft NAVD88) =
 Site = SJR Downstream of Bifurcation Struture
 (Farmers WD property)

Agency = USBR
 Measurements:
 Type = Datalogger
 Interval = Hourly
 Timeseries unavailable

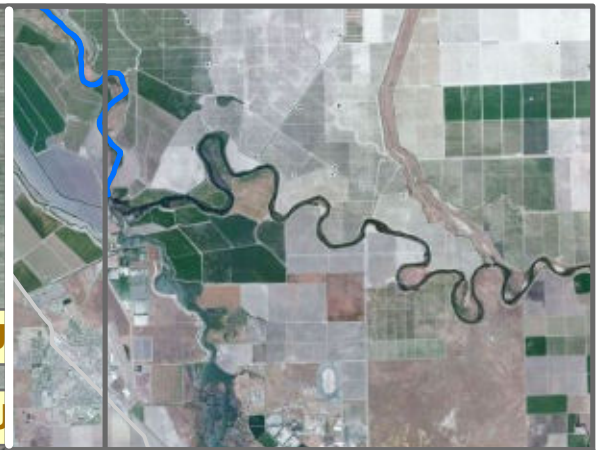
Description:
 Cabled to tree root. 85-90 ft upstream of 3rd power pole from access road along farmed field. 5 ft upstream of SJRBIFERB

Ground Surface Elevation (ft) =
 Monitoring Depth (ft) =



 Temperature

Monitoring Location SJRDSBIFERA



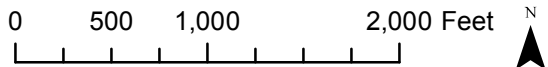
Reach = 2B
 River Mile = 215.7
 Madera County
 Right Bank

X = -120.2900 Y = 36.7697 Status = Existing
 (Horizontal Datum is NAD83)
 Distance From River Centerline (ft)=
 Reference Elevation (ft NAVD88) =
 Site = SJR Downstream of Bifurcation Struture
 (Farmers WD property)

Agency = USBR
 Measurements:
 Type = Datalogger
 Interval = Hourly
 Timeseries unavailable

Description:
 Cabled to tree root. 85-90 ft upstream of 3rd power pole from access road along farmed field. 5 ft downstream of SJRBIFERA

Ground Surface Elevation (ft) =
 Monitoring Depth (ft) =



 Temperature

Monitoring Location SJRDSBIFERB