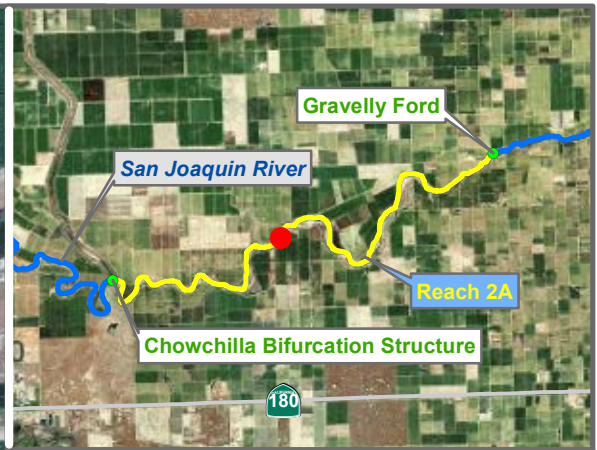


RECLAMATION
Managing Water in the West

Reach 2A Temperature Monitoring Wells



Preliminary Data



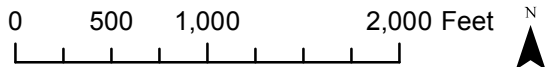
Reach = 2A
 River Mile = 222.1
 Fresno County
 Left Bank

X = -120.2201 Y = 36.7850 Status = Existing
 (Horizontal Datum is NAD83)
 Distance From River Centerline (ft) = 423
 Reference Elevation (ft NAVD88) = 181.84
 Site = Napa Ave.

Agency = USBR
 Measurements:
 Type = Datalogger
 Interval = Hourly
 Timeseries unavailable

Description:
 2 inch PVC well

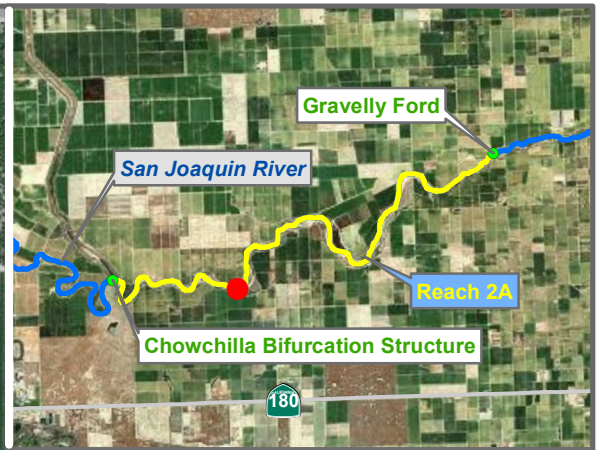
Ground Surface Elevation (ft) = 179.45
 Monitoring Depth (ft) = 15-20 ft below gs



Temperature

Monitoring Location FA-5

* = assumed value
 bgs = below ground surface
 NR = not recorded



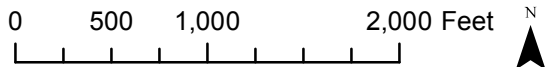
Reach = 2A
 River Mile = 219.8
 Fresno County
 Left Bank

X = -120.2375 Y = 36.7693 Status = Existing
 (Horizontal Datum is NAD83)
 Distance From River (ft)= 126
 Reference Elevation (ft NAVD88) = 181.82
 Site = Transect 10

Agency = USBR
 Measurements:
 Type = Datalogger
 Interval = Hourly
 Timeseries unavailable

Description:
 2 inch PVC casing

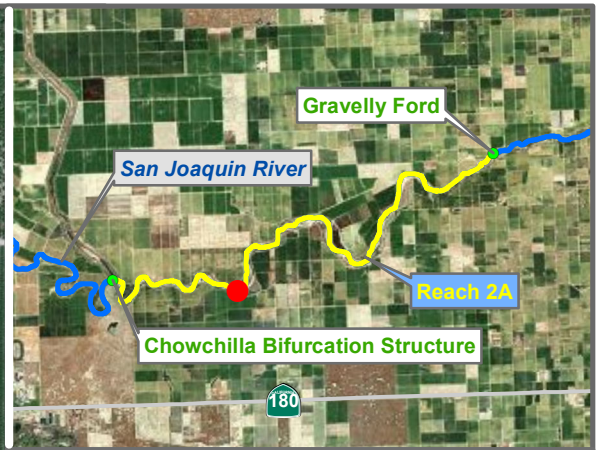
Ground Surface Elevation (ft) = 180.86
 Monitoring Depth (ft) = 15-20 ft below gs



Temperature

Monitoring Location FA-6

* = assumed value
 bgs = below ground surface
 NR = not recorded



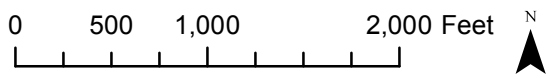
Reach = 2A
 River Mile = 219.8
 Fresno County
 Left Bank

X = -120.2375 Y = 36.7689 Status = Existing
 (Horizontal Datum is NAD83)
 Distance From River (ft) = 262
 Reference Elevation (ft NAVD88) = 182.57
 Site = Transect 10

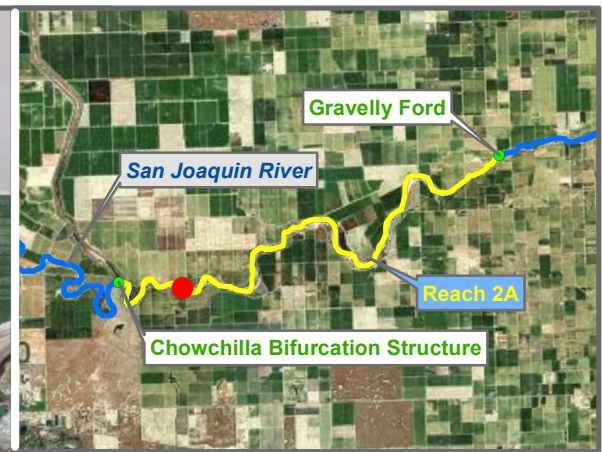
Agency = USBR
 Measurements:
 Type = Datalogger
 Interval = Hourly
 Timeseries unavailable

Description:
 2 inch PVC casing

Ground Surface Elevation (ft) = 181.57
 Monitoring Depth (ft) = 12-32 ft below gs



Monitoring Location FA-7



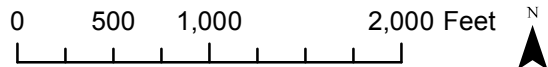
Reach = 2A
 River Mile = 218.2
 Fresno County
 Left Bank

X = -120.2608 Y = 36.7711 Status = Existing
 (Horizontal Datum is NAD83)
 Distance From River (ft) = 385
 Reference Elevation (ft NAVD88) = 174.06
 Site = Transect 12

Agency = USBR
 Measurements:
 Type = Datalogger
 Interval = Hourly
 Timeseries unavailable

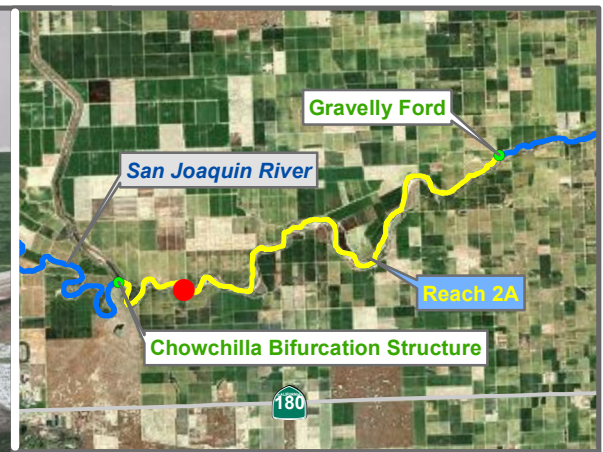
Description:
 2 inch PVC casing

Ground Surface Elevation (ft) = 172.70
 Monitoring Depth (ft) = 15-30 ft below gs



Temperature

Monitoring Location FA-8



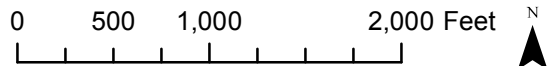
Reach = 2A
 River Mile = 218.2
 Fresno County
 Left Bank

X = -120.2604 Y = 36.7705 Status = Existing
 (Horizontal Datum is NAD83)
 Distance From River (ft) = 427
 Reference Elevation (ft NAVD88) = 174.57
 Site = Transect 12

Agency = USBR
 Measurements:
 Type = Datalogger
 Interval = Hourly
 Timeseries unavailable

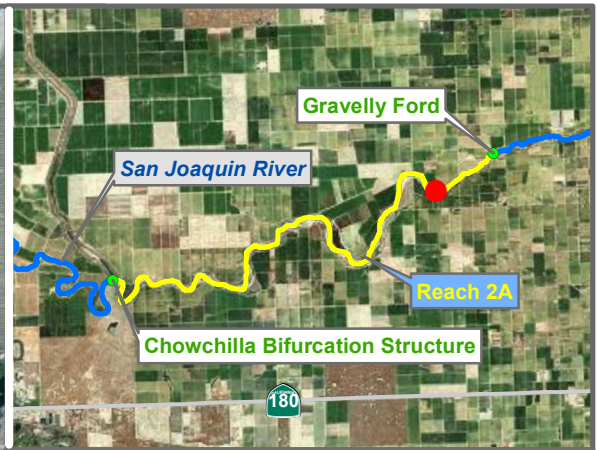
Description:
 2 inch PVC casing

Ground Surface Elevation (ft) = TBD
 Monitoring Depth (ft) = 12-32 ft below gs



Temperature

Monitoring Location FA-9



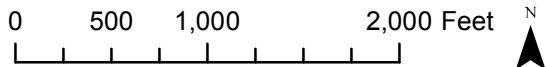
Reach = 2A
 River Mile = 227.6
 Fresno County
 Channel Bank

X = -120.1600 Y = 36.7980 Status = Existing
 (Horizontal Datum is NAD83)
 Distance From River (ft) = 40
 Reference Elevation (ft NAVD88) =
 Site = Gravelly Ford

Agency = USBR
 Measurements:
 Type = Telemetry
 Interval = 15 min
 Date Range = 8/17/2010 - 5/8/2012

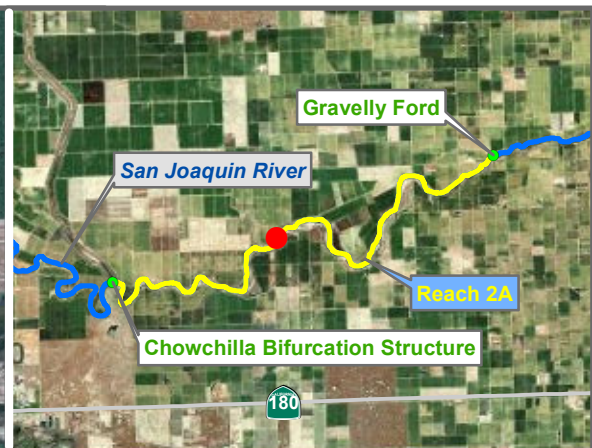
Description:
 Sensor at real-time flow gaging station

Ground Surface Elevation (ft) =
 Monitoring Depth (ft) =



 Temperature

Monitoring Location GRF



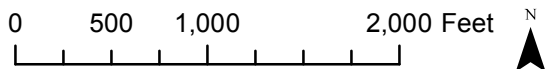
Reach = 2A
 River Mile = 222.1
 Madera County
 Right Bank

X = -120.2219 Y = 36.7856 Status = Existing
 (Horizontal Datum is NAD83)
 Distance From River Centerline (ft) = 260
 Reference Elevation (ft NAVD88) = 183.39
 Site = Napa Ave.

Agency = USBR
 Measurements:
 Type = Datalogger
 Interval = Hourly
 Timeseries unavailable

Description:
 2 inch PVC well

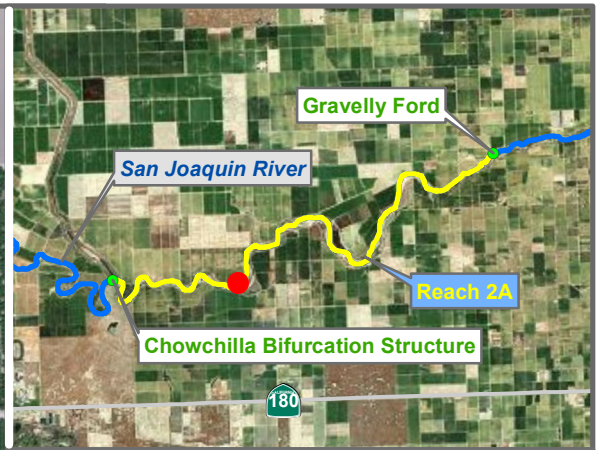
Ground Surface Elevation (ft) = 182.69
 Monitoring Depth (ft) = 12-32 ft below gs



 Temperature

Monitoring Location MA-2

* = assumed value
 bgs = below ground surface
 NR = not recorded



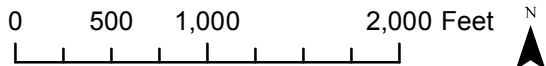
Reach = 2A
 River Mile = 219.8
 Madera County
 Right Bank

X = -120.2372 Y = 36.7713 Status = Existing
 (Horizontal Datum is NAD83)
 Distance From River (ft)= 632
 Reference Elevation (ft NAVD88) = 180.64
 Site = Transect 10

Agency = USBR
 Measurements:
 Type = Datalogger
 Interval = Hourly
 Timeseries unavailable

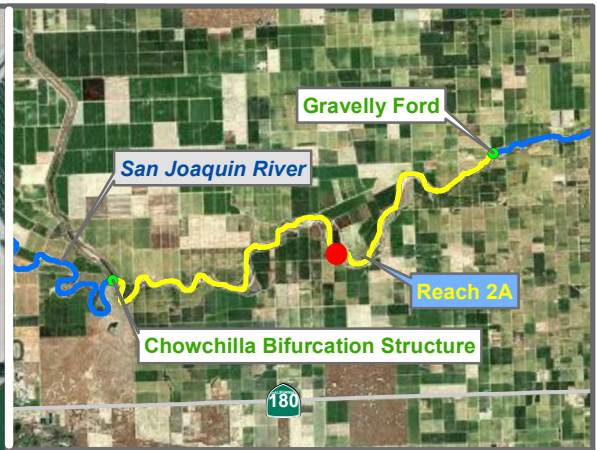
Description:
 2 inch PVC casing

Ground Surface Elevation (ft) = TBD
 Monitoring Depth (ft) = 14.5-34.5 ft below gs



 Temperature

Monitoring Location MA-3



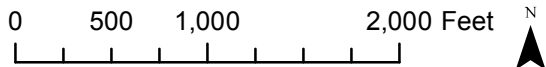
Reach = 2A
 River Mile = 223.8
 Fresno County
 Left Bank

X = -120.1988 Y = 36.7794 Status = Existing
 (Horizontal Datum is NAD83)
 Distance From River (ft) = 380
 Reference Elevation (ft NAVD88) = 191.70
 Site = Shields Ave.

Agency = USBR
 Measurements:
 Type = Datalogger
 Interval = Hourly
 Timeseries unavailable

Description:
 2 inch PVC well FM

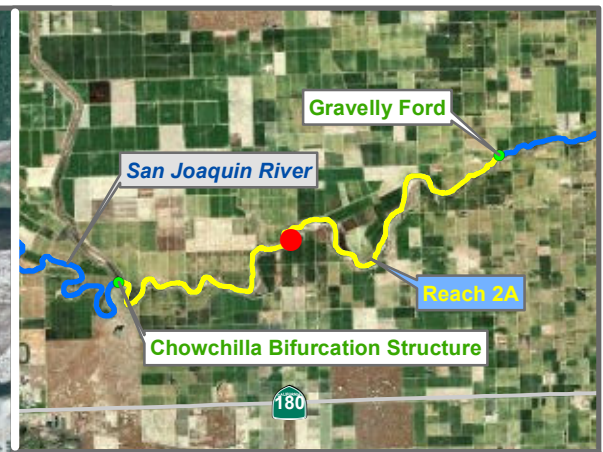
Ground Surface Elevation (ft) = 191.80
 Monitoring Depth (ft) = 67.0 - 87.0 ft below gs



 Temperature

Monitoring Location MW-09-37

* = assumed value
 bgs = below ground surface
 NR = not recorded



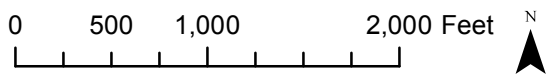
Reach = 2A
 River Mile = 222.1
 Fresno County
 Left Bank

X = -120.2186 Y = 36.7849 Status = Existing
 (Horizontal Datum is NAD83)
 Distance From River Centerline (ft)=
 Reference Elevation (ft NAVD88) = 184.80
 Site = Napa Ave.

Agency = USBR
 Measurements:
 Type = Datalogger
 Interval = Hourly
 Timeseries unavailable

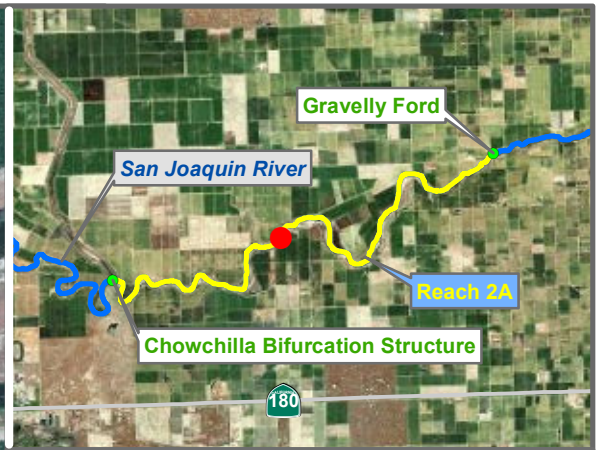
Description:
 2 inch PVC casing FM

Ground Surface Elevation (ft) = 184.90
 Monitoring Depth (ft) = 14.5 - 24.5 ft below gs



Monitoring Location MW-09-39B

* = assumed value
 bgs = below ground surface
 NR = not recorded



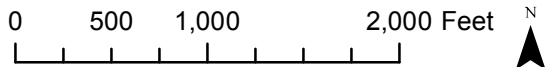
Reach = 2A
 River Mile = 222.1
 Fresno County
 Left Bank

X = -120.2201 Y = 36.7850 Status = Existing
 (Horizontal Datum is NAD83)
 Distance From River Centerline (ft) = 423
 Reference Elevation (ft NAVD88) = 180.50
 Site = Napa Ave.

Agency = USBR
 Measurements:
 Type = Datalogger
 Interval = Hourly
 Timeseries unavailable

Description:
 2 inch PVC casing FM

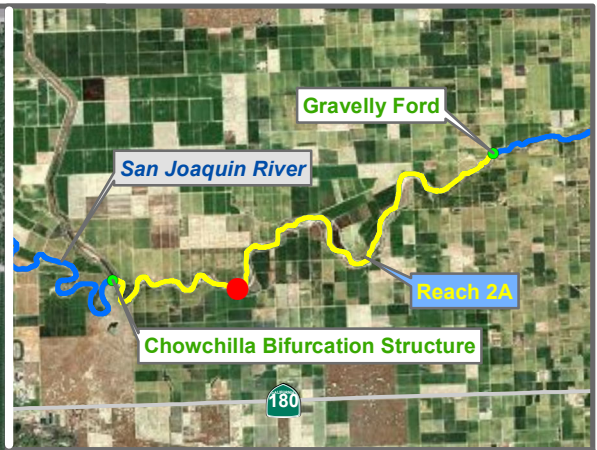
Ground Surface Elevation (ft) = 180.70
 Monitoring Depth (ft) = 62.0 - 82.0 ft below gs



Temperature

Monitoring Location MW-09-41

* = assumed value
 bgs = below ground surface
 NR = not recorded



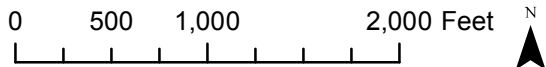
Reach = 2A
 River Mile = 219.8
 Fresno County
 Left Bank

X = -120.2375 Y = 36.7693 Status = Existing
 (Horizontal Datum is NAD83)
 Distance From River (ft) = 126
 Reference Elevation (ft NAVD88) = 179.20
 Site = Transect 10

Agency = USBR
 Measurements:
 Type = Datalogger
 Interval = Hourly
 Timeseries unavailable

Description:
 2 inch PVC casing FM

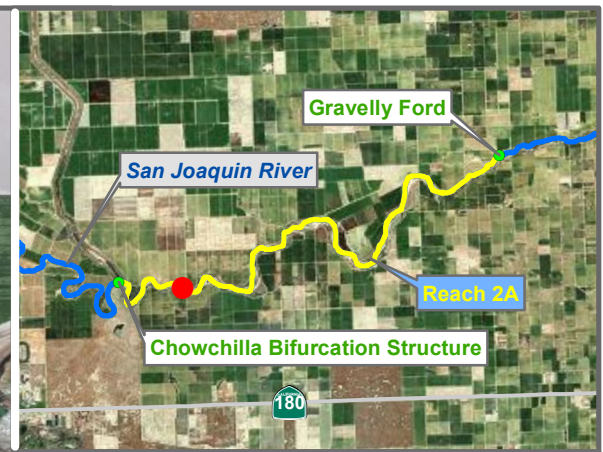
Ground Surface Elevation (ft) = 179.20
 Monitoring Depth (ft) = 41.5 - 61.5 ft below gs



 Temperature

Monitoring Location MW-09-44

* = assumed value
 bgs = below ground surface
 NR = not recorded



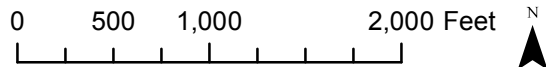
Reach = 2A
 River Mile = 218.2
 Fresno County
 Left Bank

X = -120.2608 Y = 36.7711 Status = Existing
 (Horizontal Datum is NAD83)
 Distance From River (ft) = 385
 Reference Elevation (ft NAVD88) = 173.40
 Site = Transect 12

Agency = USBR
 Measurements:
 Type = Datalogger
 Interval = Hourly
 Timeseries unavailable

Description:
 2 inch PVC casing FM

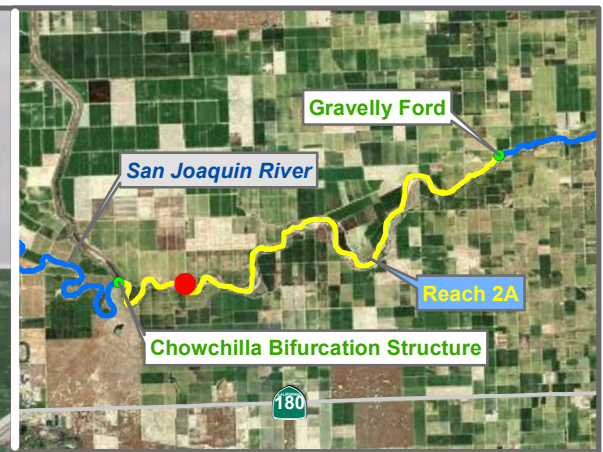
Ground Surface Elevation (ft) = 173.50
 Monitoring Depth (ft) = 42.0 - 62.0 ft below gs



 Temperature

Monitoring Location MW-09-46

* = assumed value
 bgs = below ground surface
 NR = not recorded



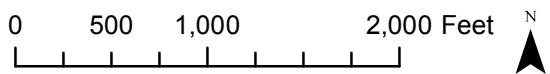
Reach = 2A
 River Mile = 218.2
 Status = Existing
 (Horizontal Datum is NAD83)
 Distance From River (ft) = 134
 Reference Elevation (ft NAVD88) = 174.60
 Site = Transect 12

Madera County
 Right Bank

Agency = USBR
 Measurements:
 Type = Datalogger
 Interval = Hourly
 Timeseries unavailable

Description:
 2 inch PVC casing FM

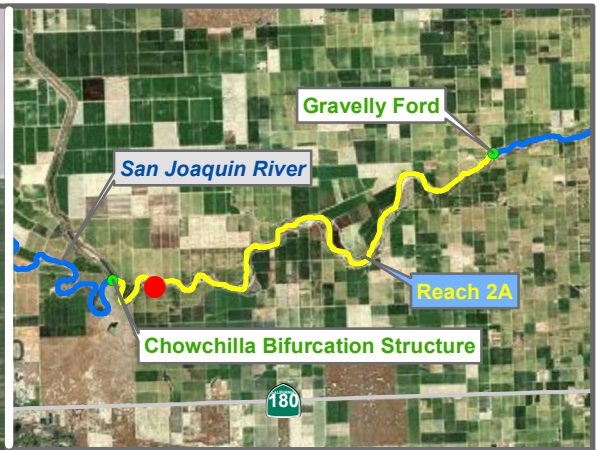
Ground Surface Elevation (ft) = 174.70
 Monitoring Depth (ft) = 20.0 - 40.0 ft below gs



Temperature

Monitoring Location MW-09-47

* = assumed value
 bgs = below ground surface
 NR = not recorded



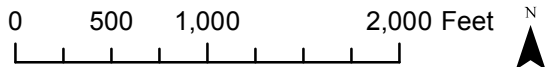
Reach = 2A
 River Mile = 217.2
 Fresno County
 Left Bank

X = -120.2691 Y = 36.7708 Status = Existing
 (Horizontal Datum is NAD83)
 Distance From River (ft) = 248
 Reference Elevation (ft NAVD88) = 170.80
 Site = Transect 13

Agency = USBR
 Measurements:
 Type = Datalogger
 Interval = Hourly
 Timeseries unavailable

Description:
 2 inch PVC casing FM

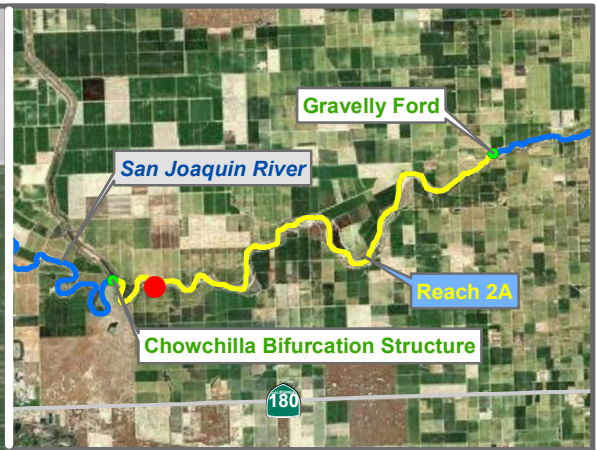
Ground Surface Elevation (ft) = 171.00
 Monitoring Depth (ft) = 50.0 - 60.0 ft below gs



 Temperature

Monitoring Location MW-09-49

* = assumed value
 bgs = below ground surface
 NR = not recorded



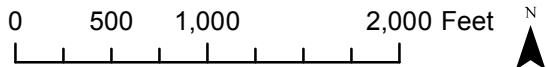
Reach = 2A
 River Mile = 217.2
 Fresno County
 Left Bank

X = -120.2691 Y = 36.7708 Status = Existing
 (Horizontal Datum is NAD83)
 Distance From River (ft) = 248
 Reference Elevation (ft NAVD88) = 170.85
 Site = Transect 13

Agency = USBR
 Measurements:
 Type = Datalogger
 Interval = Hourly
 Timeseries unavailable

Description:
 2 inch PVC casing FM

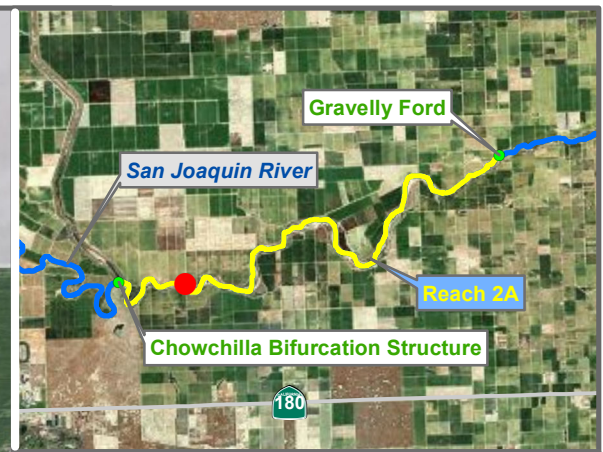
Ground Surface Elevation (ft) = 170.90
 Monitoring Depth (ft) = 10.0 - 20.0 ft below gs



 Temperature

Monitoring Location MW-09-49B

* = assumed value
 bgs = below ground surface
 NR = not recorded

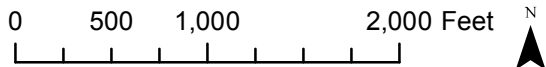


Reach = 2A
 River Mile = 217.2
 Fresno County
 Left Bank
 X = -120.2598 Y = 36.7721 Status = Existing
 (Horizontal Datum is NAD83)
 Distance From River (ft) = 125
 Reference Elevation (ft NAVD88) = 164.98
 Site = Transect 13

Agency = USBR
 Measurements:
 Type = Datalogger
 Interval = Hour?
 Timeseries unavailable

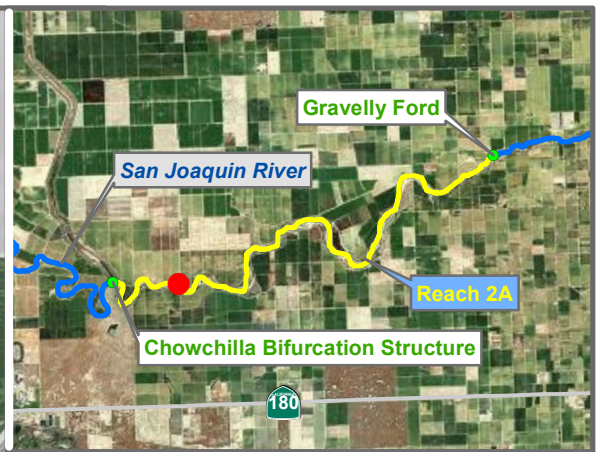
Description:
 2 inch pipe

Ground Surface Elevation (ft) =
 Monitoring Depth (ft) =



 Temperature

Monitoring Location SG-217.2



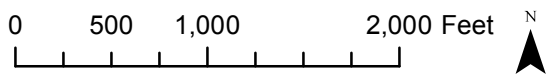
Reach = 2A
 River Mile = 218.2
 Madera County
 Right Bank

X = -120.2600 Y = 36.7720 Status = Existing
 (Horizontal Datum is NAD83)
 Distance From River (ft) = 52
 Reference Elevation (ft NAVD88) = 168.75
 Site = Transect 12

Agency = USBR
 Measurements:
 Type = Datalogger
 Interval = Hour?
 Timeseries unavailable

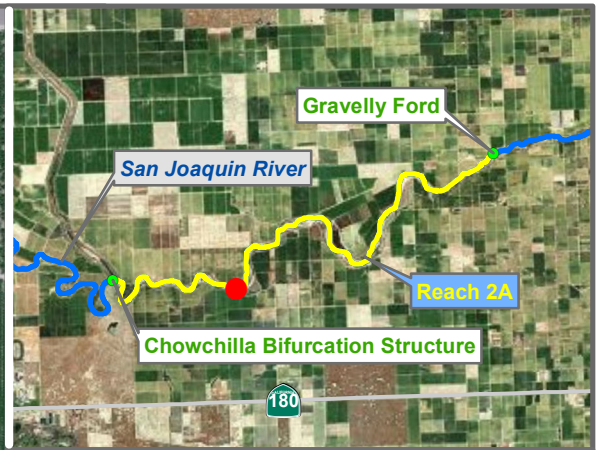
Description:
 2 inch pipe

Ground Surface Elevation (ft) =
 Monitoring Depth (ft) =



Monitoring Location SG-218.2

* = assumed value
 bgs = below ground surface
 NR = not recorded



Reach = 2A
 River Mile = 219.8
 Fresno County
 Left Bank

X = -120.2380 Y = 36.7694 Status = Existing
 (Horizontal Datum is NAD83)
 Distance From River (ft) = 102
 Reference Elevation (ft NAVD88) = 175.30
 Site = Transect 10

Agency = USBR
 Measurements:
 Type = Datalogger
 Interval = Hour?
 Timeseries unavailable

Description:
 2 inch pipe

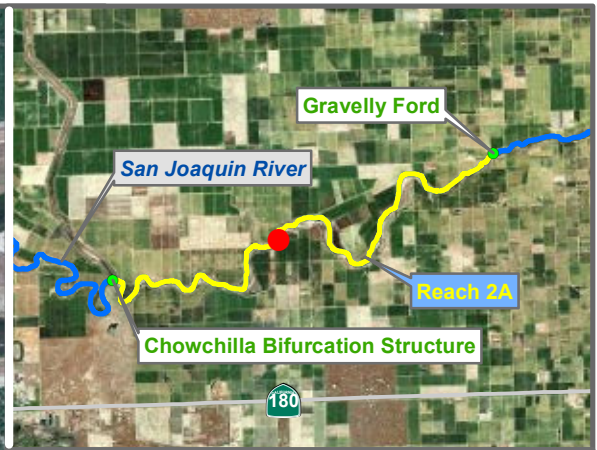
Ground Surface Elevation (ft) = 169.58
 Monitoring Depth (ft) =



Temperature

Monitoring Location SG-219.8

* = assumed value
 bgs = below ground surface
 NR = not recorded



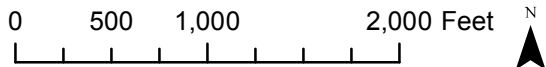
Reach = 2A
 River Mile = 222.1
 Fresno County
 Left Bank

X = -120.2211 Y = 36.7843 Status = Existing
 (Horizontal Datum is NAD83)
 Distance From River Centerline (ft)= 113
 Reference Elevation (ft NAVD88) = 176.22
 Site = Napa Ave.

Agency = USBR
 Measurements:
 Type = Datalogger
 Interval = Hour?
 Timeseries unavailable

Description:
 2 inch pipe

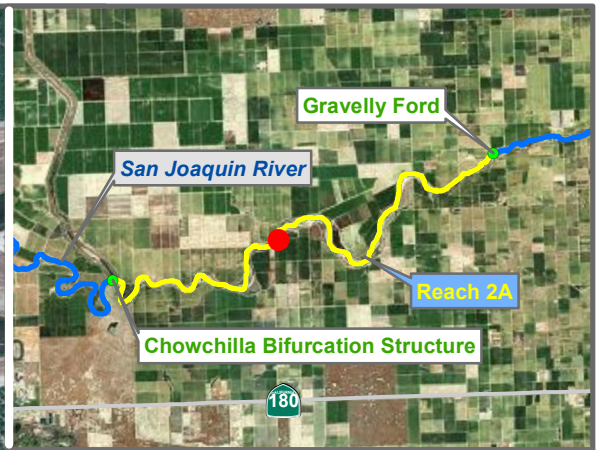
Ground Surface Elevation (ft) =
 Monitoring Depth (ft) =



 Temperature

Monitoring Location SG-222.1

* = assumed value
 bgs = below ground surface
 NR = not recorded



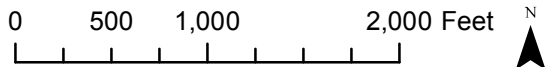
Reach = 2A
 River Mile = 222.1
 Fresno County
 Left Bank

X = -120.2211 Y = 36.7843 Status = Existing
 (Horizontal Datum is NAD83)
 Distance From River (ft) = 113
 Reference Elevation (ft NAVD88) = 176.22
 Site = Napa Ave.

Agency = USBR
 Measurements:
 Type = Datalogger
 Interval = Hour?
 Timeseries unavailable

Description:
 2 inch pipe

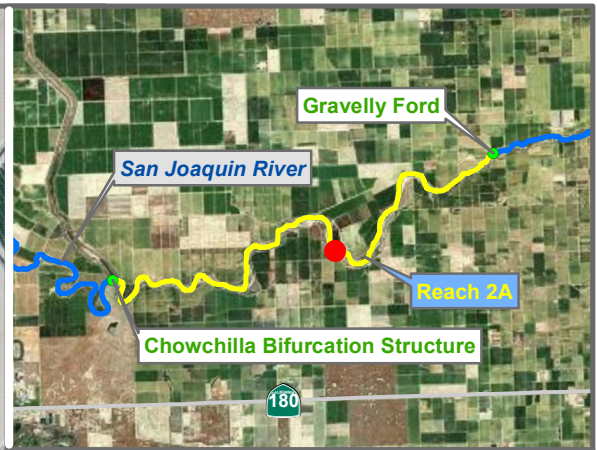
Ground Surface Elevation (ft) =
 Monitoring Depth (ft) =



 Temperature

Monitoring Location SG-222.1

* = assumed value
 bgs = below ground surface
 NR = not recorded



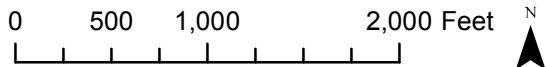
Reach = 2A
 River Mile = 223.8
 Fresno County
 Left Bank

X = -120.1992 Y = 36.7803 Status = Existing
 (Horizontal Datum is NAD83)
 Distance From River (ft) = 137
 Reference Elevation (ft NAVD88) = 179.62
 Site = Shields Ave.

Agency = USBR
 Measurements:
 Type = Datalogger
 Interval = Hour?
 Timeseries unavailable

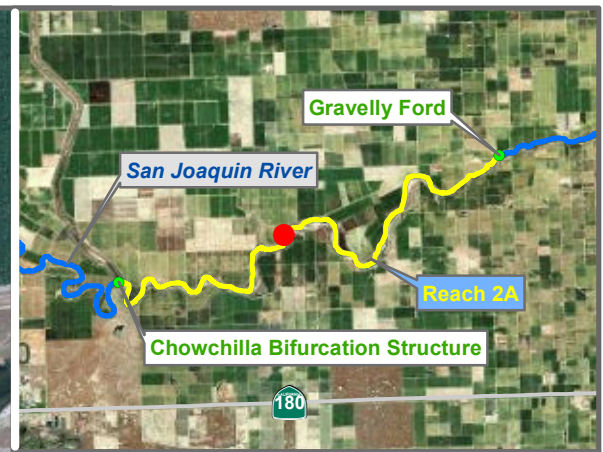
Description:
 2 inch pipe

Ground Surface Elevation (ft) =
 Monitoring Depth (ft) =



 Temperature

Monitoring Location SG-223.8



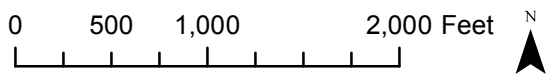
Reach = 2A
 River Mile = 222.1
 Madera County
 Right Bank

X = -120.2214 Y = 36.7866 Status = Existing
 (Horizontal Datum is NAD83)
 Distance From River Centerline (ft)=
 Reference Elevation (ft NAVD88) =
 Site = SJR downstream of Aliso Canal turnout

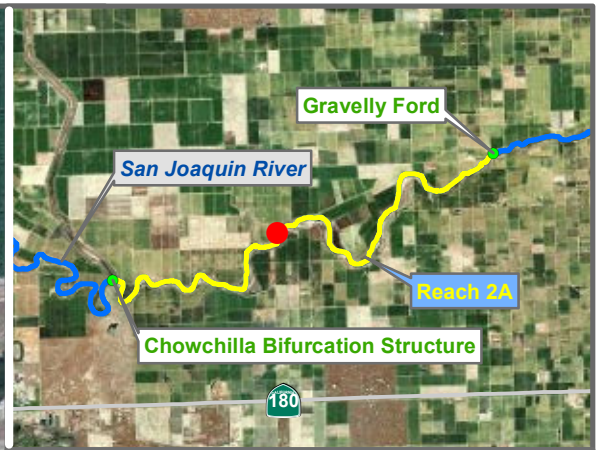
Agency = USBR
 Measurements:
 Type = Datalogger
 Interval = Hourly
 Timeseries unavailable

Description:
 Cabled to small willow tree. 30 ft upstream of
 SJRDSALISOB. Downstream from large Cottonwood
 downstream of Aliso Canal.

Ground Surface Elevation (ft) =
 Monitoring Depth (ft) =



Monitoring Location SJRDSALISOA1



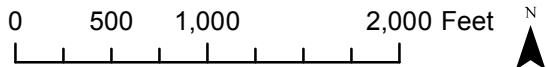
Reach = 2A
 River Mile = 222.1
 Madera County
 Right Bank

X = -120.2214 Y = 36.7865 Status = Existing
 (Horizontal Datum is NAD83)
 Distance From River Centerline (ft)=
 Reference Elevation (ft NAVD88) =
 Site = SJR downstream of Aliso Canal turnout

Agency = USBR
 Measurements:
 Type = Datalogger
 Interval = Hourly
 Timeseries unavailable

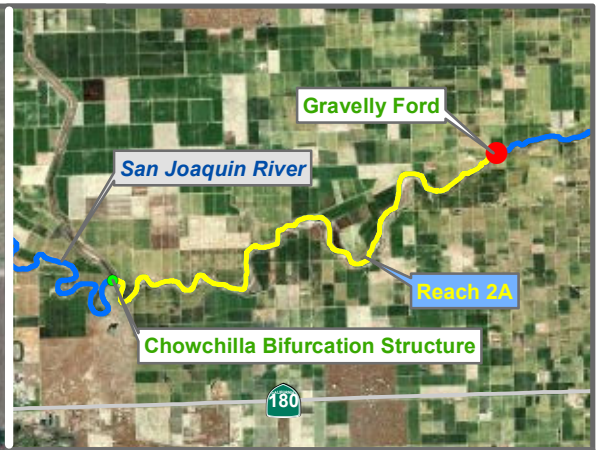
Description:
 Cabled to 3 in dia. willow tree. Downstream from
 large Cottonwood downstream of Aliso Canal.

Ground Surface Elevation (ft) =
 Monitoring Depth (ft) =



Temperature

Monitoring Location SJRDSALISOA2



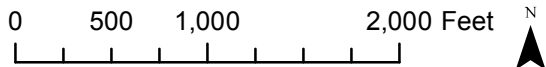
Reach = 2A
 River Mile = 229.1
 Fresno County
 Left Bank


X = -120.1361 Y = 36.8093 Status = Existing
 (Horizontal Datum is NAD83)
 Distance From River Centerline (ft)=
 Reference Elevation (ft NAVD88) =
 Site = SJR Upstream of Gravelly Ford Canal
 Turnout - Fresno Co. side (Thomas property)

Agency = USBR
 Measurements:
 Type = Datalogger
 Interval = Hourly
 Timeseries unavailable

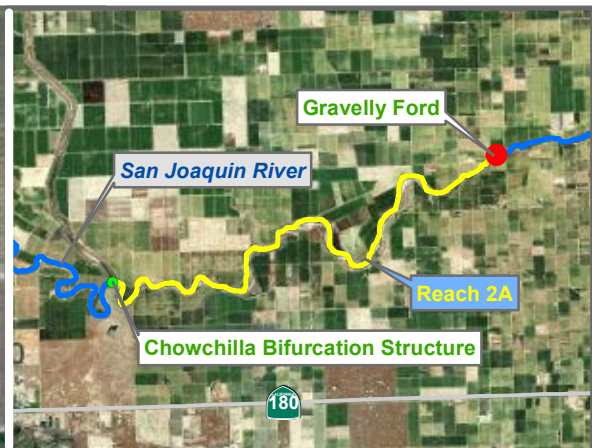
Description:
 Cabled to small willow tree. Downstream end of
 "Arundo." Upstream across from shed. Upstream of
 large logged cottonwood.

Ground Surface Elevation (ft) =
 Monitoring Depth (ft) =



 Temperature

Monitoring Location SJRTHOMASB



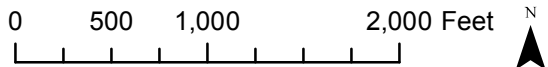
Reach = 2A
River Mile = 229.06
Fresno County
Left Bank

X = -120.1360 Y = 36.8093 Status = Existing
(Horizontal Datum is NAD83)
Distance From River Centerline (ft)=
Reference Elevation (ft NAVD88) =
Site = SJR Upstream of Gravelly Ford Canal
Turnout - Fresno Co. side (Thomas property)

Agency = USBR
Measurements:
Type = Datalogger
Interval = Hourly
Timeseries unavailable

Description:
Cabled to small willow tree. 25 ft upstream of
SJRTHOMASB. Downstream end of "Arundo."
Upstream across from shed. Upstream of large
logged cottonwood.

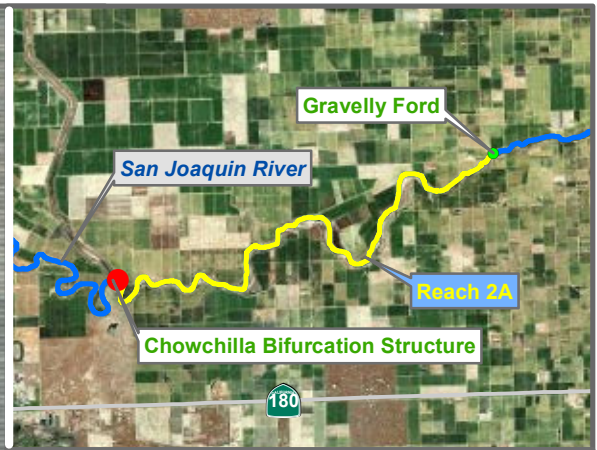
Ground Surface Elevation (ft) =
Monitoring Depth (ft) =



 Temperature

Monitoring Location SJRTOMA

* = assumed value
bgs = below ground surface
NR = not recorded



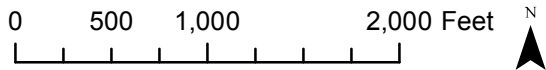
Reach = 2A
 River Mile = 216.1
 Madera County
 Right Bank

X = -120.2835 Y = 36.7734 Status = Existing
 (Horizontal Datum is NAD83)
 Distance From River Centerline (ft)=
 Reference Elevation (ft NAVD88) =
 Site = SJR Upstream of Bifurcation Structure

Agency = USBR
 Measurements:
 Type = Datalogger
 Interval = Hourly
 Timeseries unavailable

Description:
 Cabled to 3 ft dia. willow tree limb over water 15-20
 ft from bank.

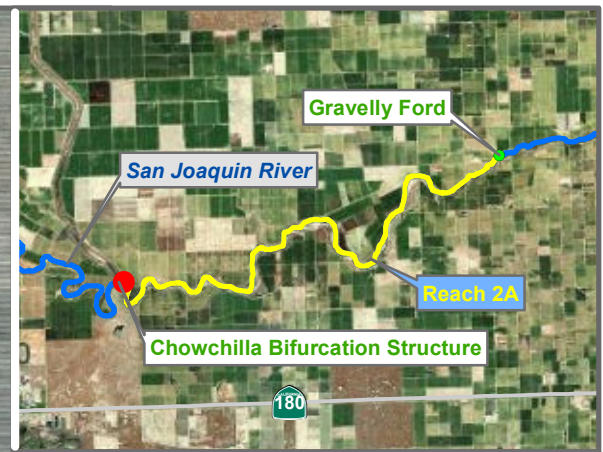
Ground Surface Elevation (ft) =
 Monitoring Depth (ft) =



Temperature

Monitoring Location SJRUSBIFURA1

* = assumed value
 bgs = below ground surface
 NR = not recorded



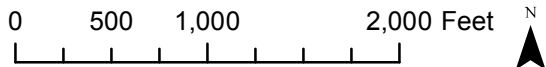
Reach = 2A
 River Mile = 216.1
 Madera County
 Right Bank

X = -120.2835 Y = 36.7733 Status = Existing
 (Horizontal Datum is NAD83)
 Distance From River Centerline (ft)=
 Reference Elevation (ft NAVD88) =
 Site = SJR Upstream of Bifurcation Structure

Agency = USBR
 Measurements:
 Type = Datalogger
 Interval = Hourly
 Timeseries unavailable

Description:
 Cabled to 3 ft dia. willow tree limb over water 10-15 ft from bank.

Ground Surface Elevation (ft) =
 Monitoring Depth (ft) =



 Temperature

Monitoring Location SJRUSBIFURA2