

0 1 2 4 Miles



RECLAMATION
Managing Water in the West

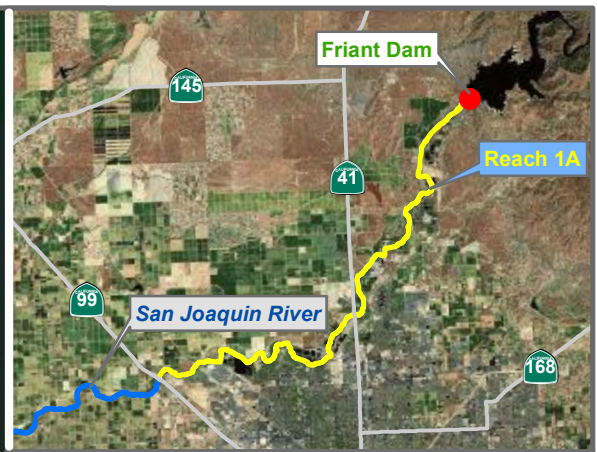
Reach 1A Temperature Monitoring Sites

SAN JOAQUIN RIVER
RESTORATION PROGRAM



Preliminary Data

Last Updated: 5/30/2012

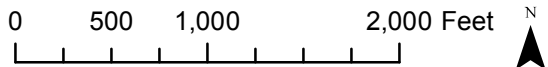


Reach = 1A
 River Mile = 267.7
 Status = Existing
 (Horizontal Datum is NAD83)
 Distance From River (ft) = 1066
 Reference Elevation (ft NAVD88) =
 Site = Friant-Kern Canal

Agency = USBR
 Measurements:
 Type = Datalogger
 Interval = Hourly
 Timeseries unavailable

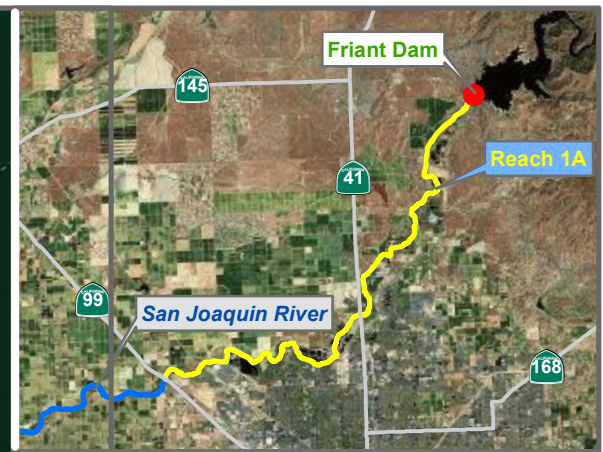
Description:
 Friant-Kern headworks release temp

Ground Surface Elevation (ft) =
 Monitoring Depth (ft) =



Temperature

Monitoring Location FKCANAL



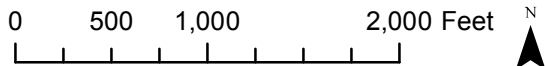
Reach = 1A
 River Mile = 267.5
 Fresno County
 Left Bank

X = -119.7061 Y = 36.9993 Status = Existing
 (Horizontal Datum is NAD83)
 Distance From River (ft) = 152
 Reference Elevation (ft NAVD88) =
 Site = At Friant Dam

Agency = USBR
 Measurements:
 Type = Telemetry
 Interval = Hourly
 Date Range = 4/1/2010 - 5/8/2012

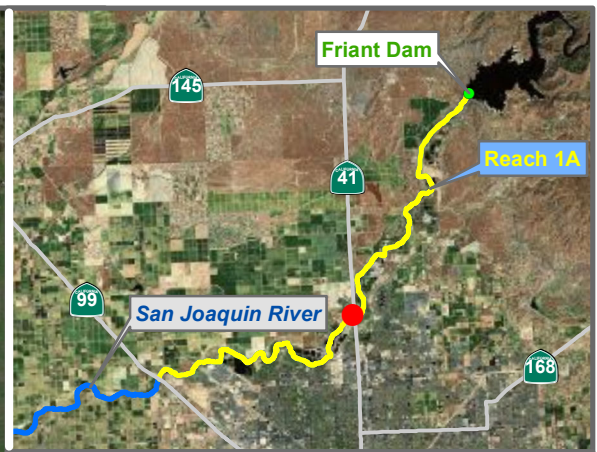
Description:
 Sensor at real-time flow gaging station

Ground Surface Elevation (ft) =
 Monitoring Depth (ft) =



Temperature

Monitoring Location FWQ



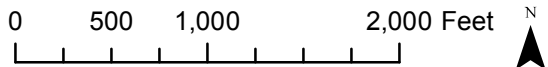
Reach = 1A
 River Mile = 255.1
 Madera County
 Channel Bank


X = -119.7932 Y = 36.8762 Status = Existing
 (Horizontal Datum is NAD83)
 Distance From River (ft) = 43
 Reference Elevation (ft NAVD88) =
 Site = Highway 41

Agency = USBR
 Measurements:
 Type = Telemetry
 Interval = 15 min
 Date Range = 8/25/2005 - 5/8/2012

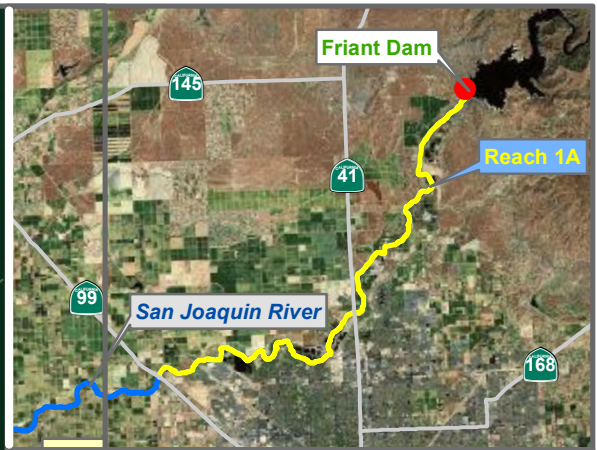
Description:
 Sensor at real-time flow gaging station

Ground Surface Elevation (ft) =
 Monitoring Depth (ft) =



 Temperature

Monitoring Location H41



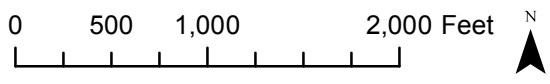
Reach = 1A
 River Mile = 267.7
 Madera County
 Right Bank

X = -119.7077 Y = 37.0022 Status = Existing
 (Horizontal Datum is NAD83)
 Distance From River (ft)= 1000
 Reference Elevation (ft NAVD88) =
 Site = Madera Canal

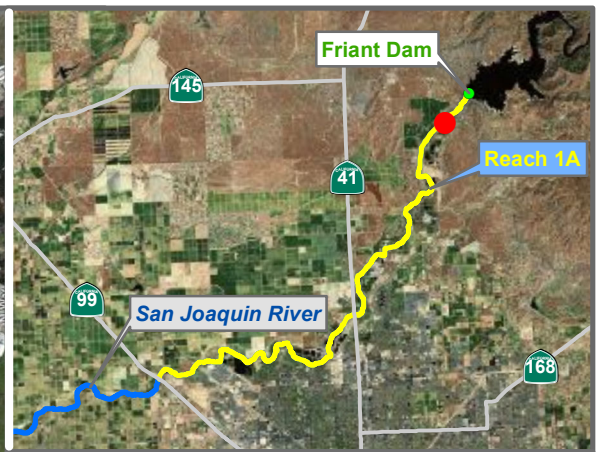
Agency = USBR
 Measurements:
 Type = Datalogger
 Interval = Hourly
 Timeseries unavailable

Description:
 Madera Canal headworks release temp

Ground Surface Elevation (ft) =
 Monitoring Depth (ft) =



Monitoring Location MCTEMP

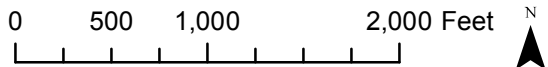



Reach = 1A
 River Mile = 266.1
 Status = Existing
 (Horizontal Datum is NAD83)
 Distance From River (ft) = 312
 Reference Elevation (ft NAVD88) =
 Site = Below Friant

Agency = USGS
 Measurements:
 Type = Telemetry
 Interval = 15 min
 Date Range = 5/8/2004 - 5/8/2012

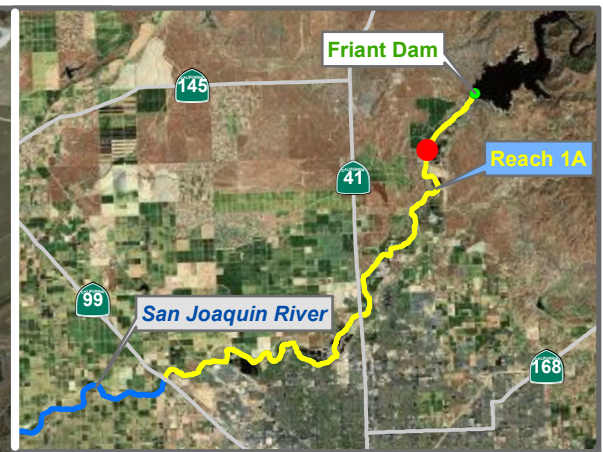
Description:
 Sensor at real-time flow gaging station

Ground Surface Elevation (ft) =
 Monitoring Depth (ft) =



 Temperature

Monitoring Location SJF



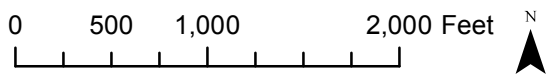
Reach = 1A
 River Mile = 264.7
 Fresno County
 Right Bank

X = -119.7404 Y = 36.9690 Status =
 (Horizontal Datum is NAD83)
 Distance From River (ft) = 52
 Reference Elevation (ft NAVD88) =
 Site = Mendota Pool

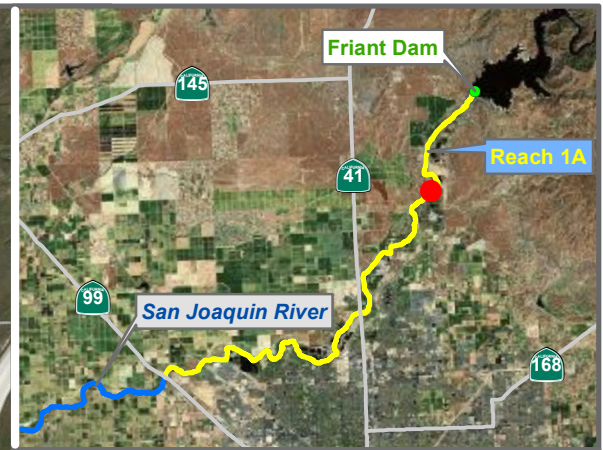
Agency = DFG
 Measurements:
 Type = Datalogger
 Interval =
 Timeseries unavailable

Description:
 Downstream of Mendota Pool. Cabled to tree on
 RR.

Ground Surface Elevation (ft) =
 Monitoring Depth (ft) =



Monitoring Location SJPMP



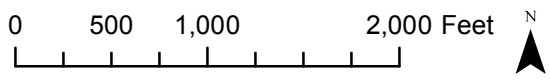
Reach = 1A
 River Mile = 262.2
 Madera County
 Left Bank

X = -119.7388 Y = 36.9442 Status =
 (Horizontal Datum is NAD83)
 Distance From River (ft) = 39
 Reference Elevation (ft NAVD88) =
 Site = Holding Pool A

Agency = DFG
 Measurements:
 Type = Datalogger
 Interval =
 Timeseries unavailable

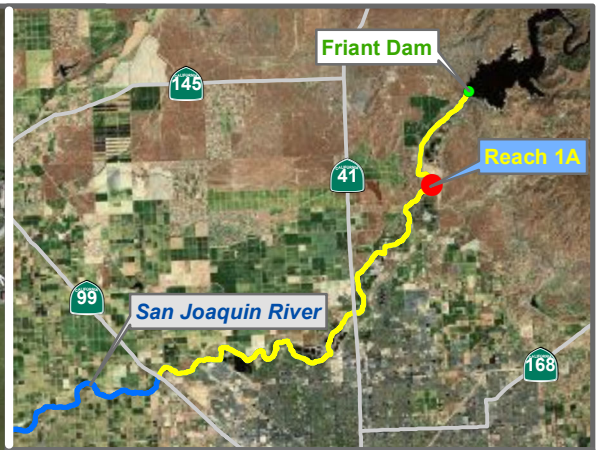
Description:
 Upstream of Ball Ranch Bridge. Cabled to tree on
 RR. Two loggers on vert. stringer (1top 2bottom)

Ground Surface Elevation (ft) =
 Monitoring Depth (ft) =



Monitoring Location SJRBR

* = assumed value
 bgs = below ground surface
 NR = not recorded



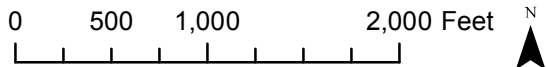
Reach = 1A
 River Mile = 262.0
 Fresno County
 Left Bank

X = -119.7336 Y = 36.9476 Status = Existing
 (Horizontal Datum is NAD83)
 Distance From River (ft) = 5
 Reference Elevation (ft NAVD88) =
 Site = Holding Pool A

Agency = DFG
 Measurements:
 Type = Datalogger
 Interval = Hourly
 Date Range = 9/29/2009 - 12/13/2010

Description:
 Upstream of Ball Ranch Bridge. Cabled to tree on
 RR. Two loggers on vert. stringer (1top 2bottom)

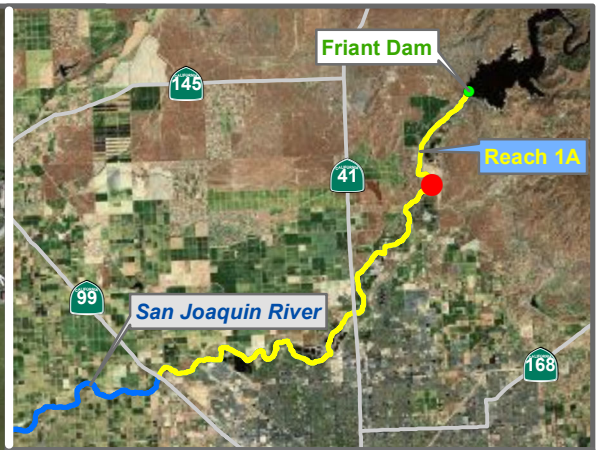
Ground Surface Elevation (ft) =
 Monitoring Depth (ft) = 1 ft below ws



Temperature

Monitoring Location SJRBR1

* = assumed value
 bgs = below ground surface
 NR = not recorded



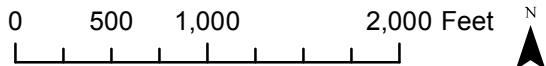
Reach = 1A
 River Mile = 262.0
 Fresno County
 Left Bank

X = -119.7336 Y = 36.9476 Status = Existing
 (Horizontal Datum is NAD83)
 Distance From River (ft) = 5
 Reference Elevation (ft NAVD88) =
 Site = Holding Pool A

Agency = DFG
 Measurements:
 Type = Datalogger
 Interval = Hourly
 Date Range = 9/29/2009 - 12/13/2010

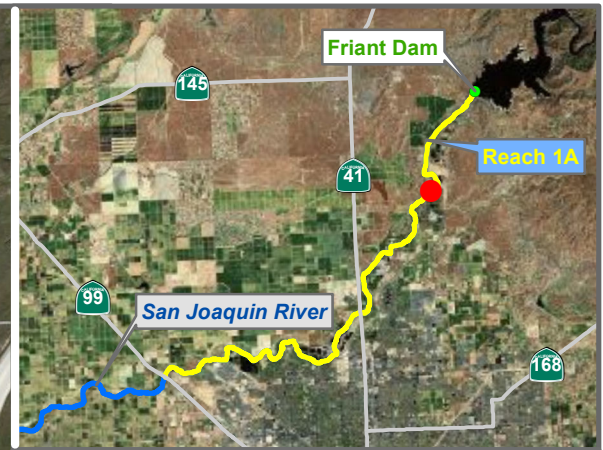
Description:
 Upstream of Ball Ranch Bridge. Cabled to tree on
 RR. Two loggers on vert. stringer (1top 2bottom)

Ground Surface Elevation (ft) =
 Monitoring Depth (ft) = 1.5 ft above gs



 Temperature

Monitoring Location SJRBR2



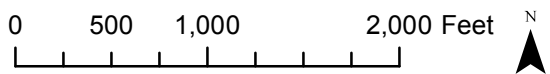
Reach = 1A
 River Mile = 226.0
 Madera County
 Right Bank

X = -119.7388 Y = 36.9442 Status = Existing
 (Horizontal Datum is NAD83)
 Distance From River (ft) = 39
 Reference Elevation (ft NAVD88) =
 Site = Ball Ranch Bridge

Agency = DFG
 Measurements:
 Type = Datalogger
 Interval = Hourly
 Date Range = 3/16/2010 - 10/7/2011

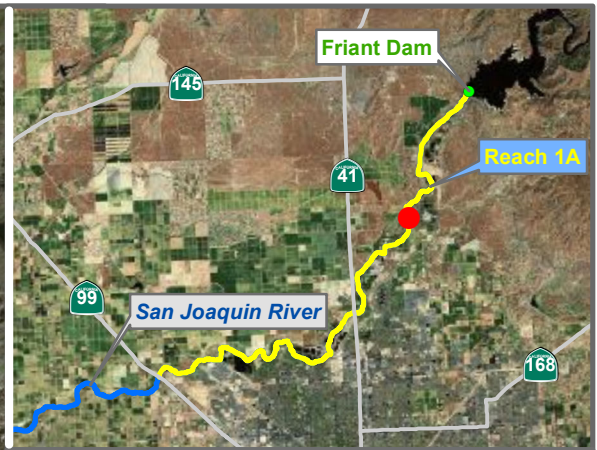
Description:
 Under bridge. Cabled to tree.

Ground Surface Elevation (ft) =
 Monitoring Depth (ft) = 1 ft above gs



Monitoring Location SJRBRB

* = assumed value
 bgs = below ground surface
 NR = not recorded



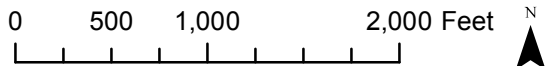
Reach = 1A
 River Mile = 260.9
 Madera County
 Left Bank

X = -119.7510 Y = 36.9290 Status =
 (Horizontal Datum is NAD83)
 Distance From River (ft) = 68
 Reference Elevation (ft NAVD88) =
 Site = Salt Slough

Agency = DFG
 Measurements:
 Type = Datalogger
 Interval =
 Date Range = 3/26/2009 - 10/26/2010

Description:
 Downstream of Salt Slough confluence - data still
 needs to be retrieved for IFP. 06-10 to present

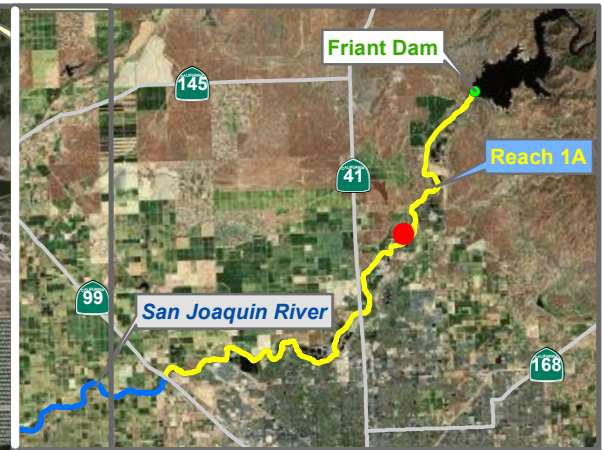
Ground Surface Elevation (ft) =
 Monitoring Depth (ft) =



Temperature

Monitoring Location SJRBSS

* = assumed value
 bgs = below ground surface
 NR = not recorded



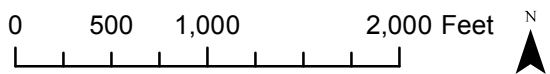
Reach = 1A
 River Mile = 259.5
 Fresno County
 Channel Bank

X = -119.7593 Y = 36.9198 Status =
 (Horizontal Datum is NAD83)
 Distance From River (ft)= 1376
 Reference Elevation (ft NAVD88) =
 Site = Chowchilla BP/Ave 12

Agency = DFG
 Measurements:
 Type = Datalogger
 Interval =
 Timeseries unavailable

Description:
 Cabled to bridge over Chowchilla Bypass at Avenue
 12 / Firebaugh Road

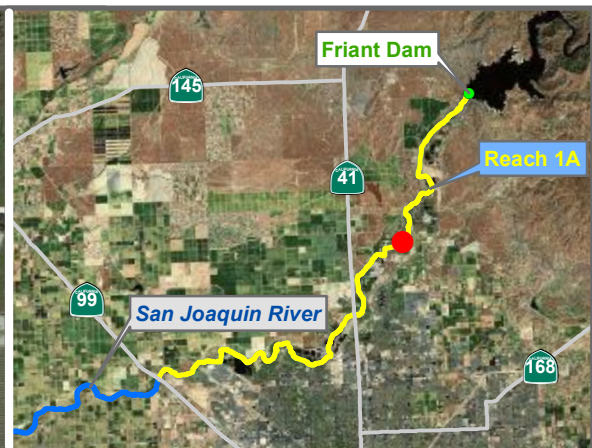
Ground Surface Elevation (ft) =
 Monitoring Depth (ft) =



Monitoring Location SJRCB1

* = assumed value
 bgs = below ground surface
 NR = not recorded

Last Updated:
 6/28/2012
 Preliminary Data



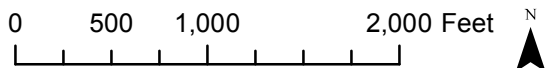
Reach = 1A
 River Mile = 259.5
 Fresno County
 Channel Bank

X = -119.7558 Y = 36.9170 Status =
 (Horizontal Datum is NAD83)
 Distance From River (ft) = 12
 Reference Elevation (ft NAVD88) =
 Site = Chowchilla BP/Ave 14

Agency = DFG
 Measurements:
 Type = Datalogger
 Interval =
 Timeseries unavailable

Description:
 Cabled to bridge over Chowchilla Bypass at Avenue 14

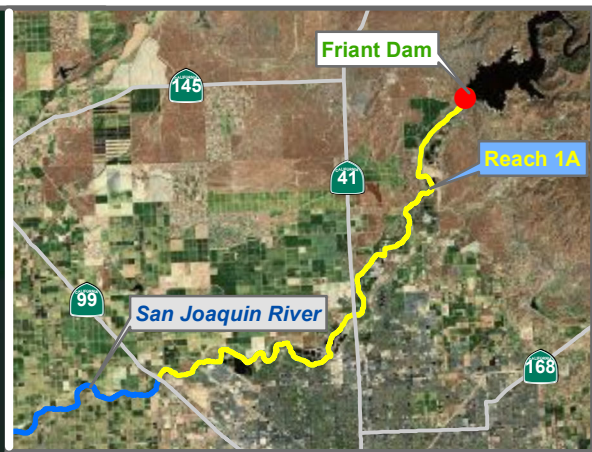
Ground Surface Elevation (ft) =
 Monitoring Depth (ft) =



Temperature

Monitoring Location SJRCB2

* = assumed value
 bgs = below ground surface
 NR = not recorded



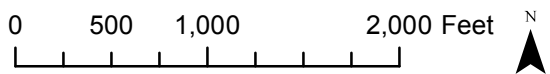
Reach = 1A
 River Mile = 267.0
 Fresno County
 Channel Bank

X = -119.7076 Y = 36.9976 Status = Existing
 (Horizontal Datum is NAD83)
 Distance From River (ft) = 31
 Reference Elevation (ft NAVD88) =
 Site = Cottonwood creek

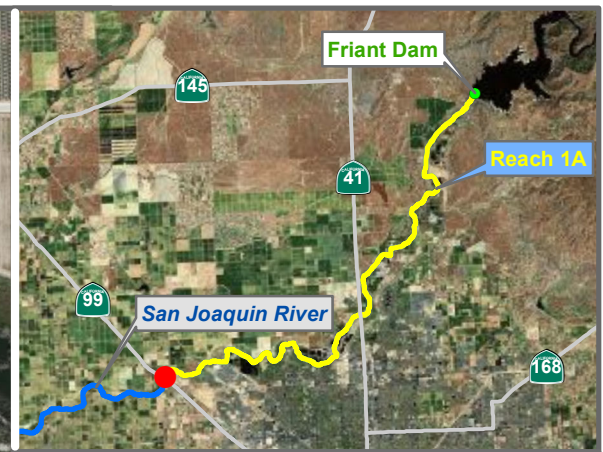
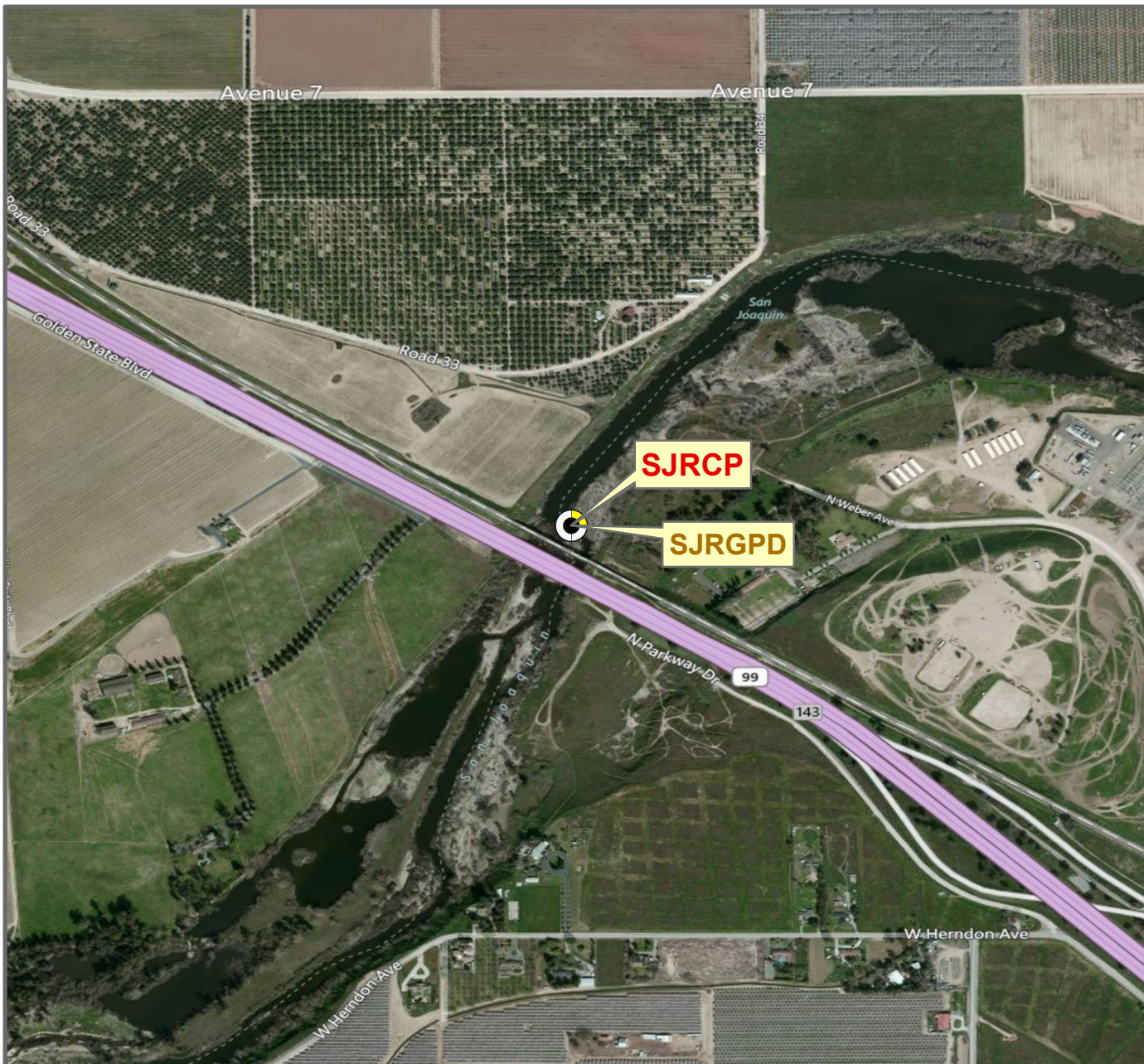
Agency = DFG
 Measurements:
 Type = Datalogger
 Interval = Hourly
 Date Range = 12/15/2009 - 6/10/2010

Description:
 Mouth of creek downstream of dam in trench pool.
 Cabled to tree on RR.

Ground Surface Elevation (ft) =
 Monitoring Depth (ft) = 1 ft above gs



Monitoring Location SJRCC



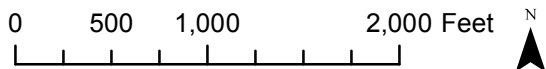
Reach = 1A
 River Mile = 243.1
 Fresno County
 Left Bank

X = -119.9325 Y = 36.8439 Status = Existing
 (Horizontal Datum is NAD83)
 Distance From River (ft) = 8
 Reference Elevation (ft NAVD88) =
 Site = Camp Pashayan

Agency = USBR
 Measurements:
 Type = Datalogger
 Interval = Hourly
 Date Range = 1/27/2010 - 2/23/2011

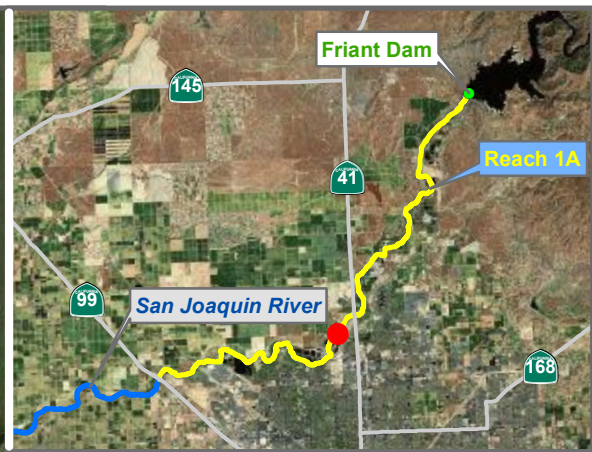
Description:
 Cabled to tree stump. Upstream of Highway 99.

Ground Surface Elevation (ft) =
 Monitoring Depth (ft) = 1 ft above gs



 Temperature

Monitoring Location SJRCP



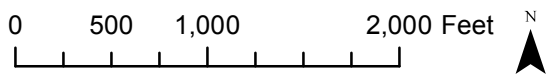
Reach = 1A
 River Mile = 254.1
 Madera County
 Channel Bank

X = -119.8042 Y = 36.8654 Status =
 (Horizontal Datum is NAD83)
 Distance From River (ft)= 507
 Reference Elevation (ft NAVD88) =
 Site = Eastside Bypass

Agency = DFG
 Measurements:
 Type = Datalogger
 Interval =
 Timeseries unavailable

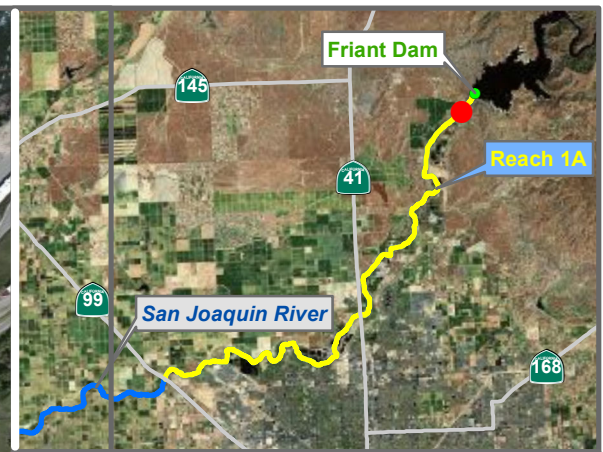
Description:
 Cabled to telemetry receiver downstream of
 Mariposa Bypass

Ground Surface Elevation (ft) =
 Monitoring Depth (ft) =



Monitoring Location SJRESB

* = assumed value
 bgs = below ground surface
 NR = not recorded



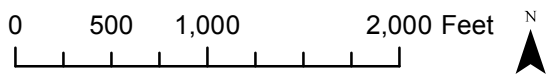
Reach = 1A
 River Mile = 266.6
 Madera County
 Right Bank

X = -119.7150 Y = 36.9900 Status = Existing
 (Horizontal Datum is NAD83)
 Distance From River (ft) = 33
 Reference Elevation (ft NAVD88) =
 Site = Friant Bridge

Agency = DFG
 Measurements:
 Type = Datalogger
 Interval = Hourly
 Date Range = 7/3/2008 - 12/13/2011

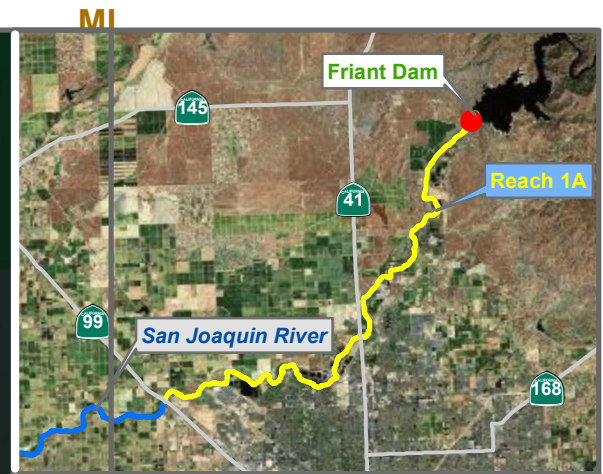
Description:
 Downstream of Friant Bridge. Cabled to tree stump
 on RR.

Ground Surface Elevation (ft) =
 Monitoring Depth (ft) = 1 ft above gs



Monitoring Location SJRFB

* = assumed value
 bgs = below ground surface
 NR = not recorded



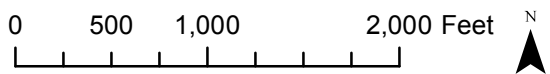
Reach = 1A
 River Mile = 267.2
 Fresno County
 Channel Bank

X = -119.7080 Y = 36.9970 Status = Lost
 (Horizontal Datum is NAD83)
 Distance From River (ft) = 39
 Reference Elevation (ft NAVD88) =
 Site = Friant Dam

Agency = DFG
 Measurements:
 Type = Datalogger
 Interval = Hourly
 Timeseries unavailable

Description:
 trench pool below dam - data lost during IFP, logger
 relocated to SJRCC

Ground Surface Elevation (ft) =
 Monitoring Depth (ft) = 1 ft above gs



Monitoring Location SJRFD

* = assumed value
 bgs = below ground surface
 NR = not recorded

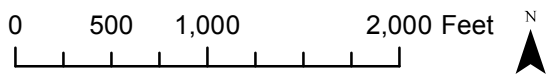


Reach = 1A
 River Mile = 267.2
 Status = Existing
 (Horizontal Datum is NAD83)
 Distance From River (ft) = 22
 Reference Elevation (ft NAVD88) =
 Site = Friant Pool

Agency = DFG
 Measurements:
 Type = Datalogger
 Interval = Hourly
 Date Range = 7/3/2008 - 9/29/2010

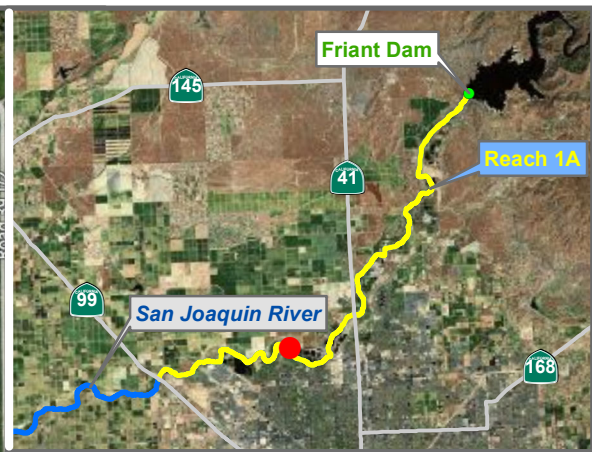
Description:
 Trench pool below dam. Downstream of SJRCC.
 Cabled to tree on RR.

Ground Surface Elevation (ft) =
 Monitoring Depth (ft) = 1 ft above gs



Monitoring Location SJRFP

* = assumed value
 bgs = below ground surface
 NR = not recorded



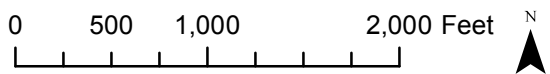
Reach = 1A
 River Mile = 249.9
 Fresno County
 Channel Bank

X = -119.8387 Y = 36.8583 Status =
 (Horizontal Datum is NAD83)
 Distance From River (ft) = 31
 Reference Elevation (ft NAVD88) =
 Site = Fresno Slough

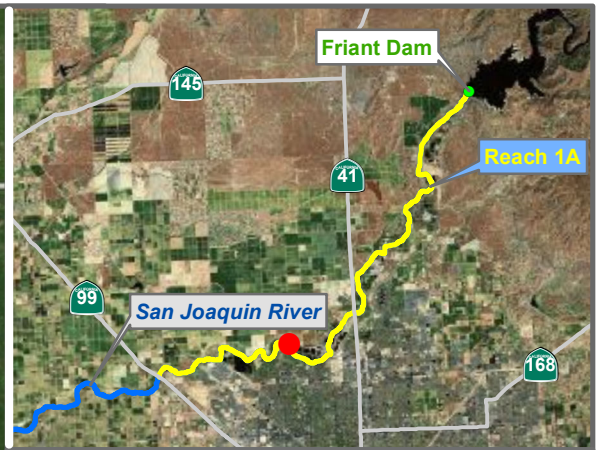
Agency = DFG
 Measurements:
 Type = Datalogger
 Interval =
 Timeseries unavailable

Description:
 Cabled to Highway 180 bridge in Fresno Slough

Ground Surface Elevation (ft) =
 Monitoring Depth (ft) =



Monitoring Location SJRFS

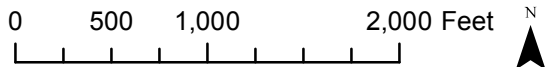



Reach = 1A
 River Mile = 249.9
 Madera County
 Channel Bank

X = -119.8392 Y = 36.8595 Status =
 (Horizontal Datum is NAD83)
 Distance From River (ft) = 51
 Reference Elevation (ft NAVD88) =
 Site = Gravel Pit A

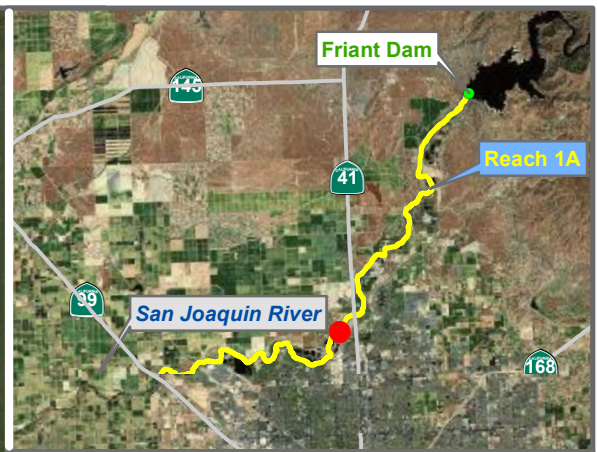
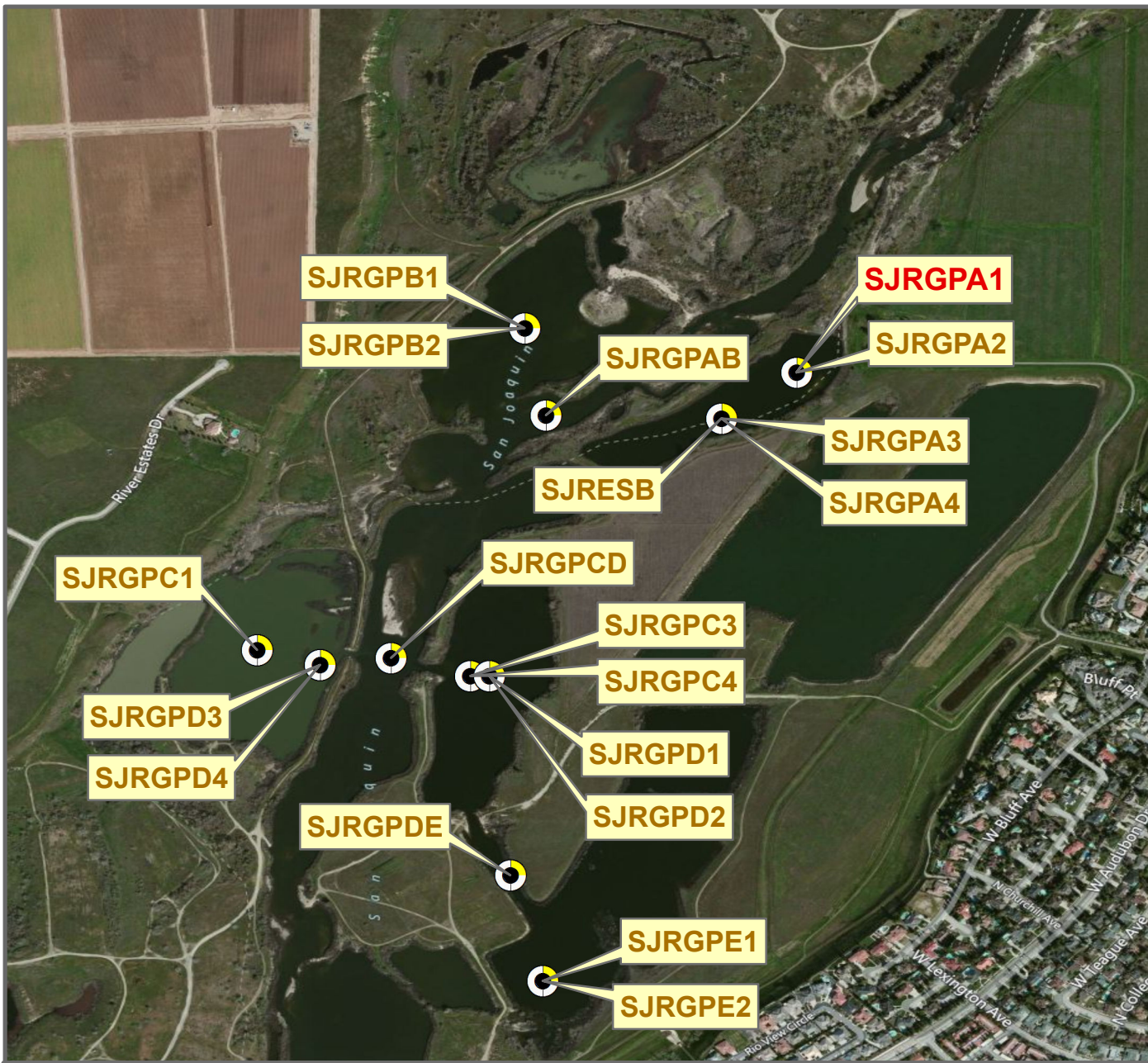
Agency = DFG
 Measurements:
 Type = Datalogger
 Interval =
 Timeseries unavailable

Description:
 Downstream of 41 bridge. One logger in middle of pond approx. two feet below surface. Remainder lost during IFP
 Ground Surface Elevation (ft) =
 Monitoring Depth (ft) =



 Temperature

Monitoring Location SJRGPA



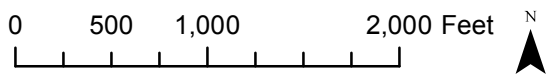
Reach = 1A Madera County
 River Mile = 254.1

X = -119.8029 Y = 36.8662 Status =
 (Horizontal Datum is NAD83)
 Distance From River Centerline (ft) =
 Reference Elevation (ft NAVD88) =
 Site = SJR Gravel Pit A1

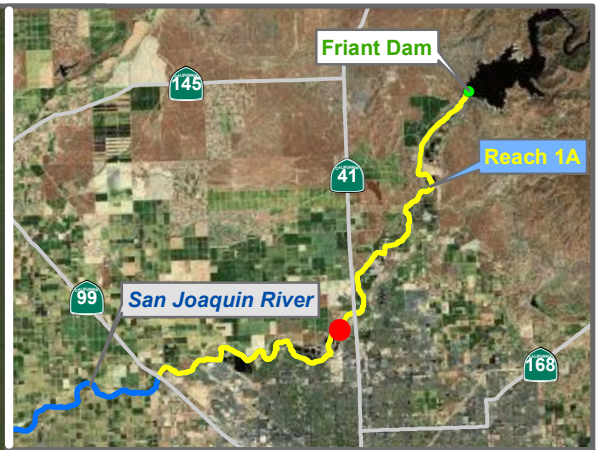
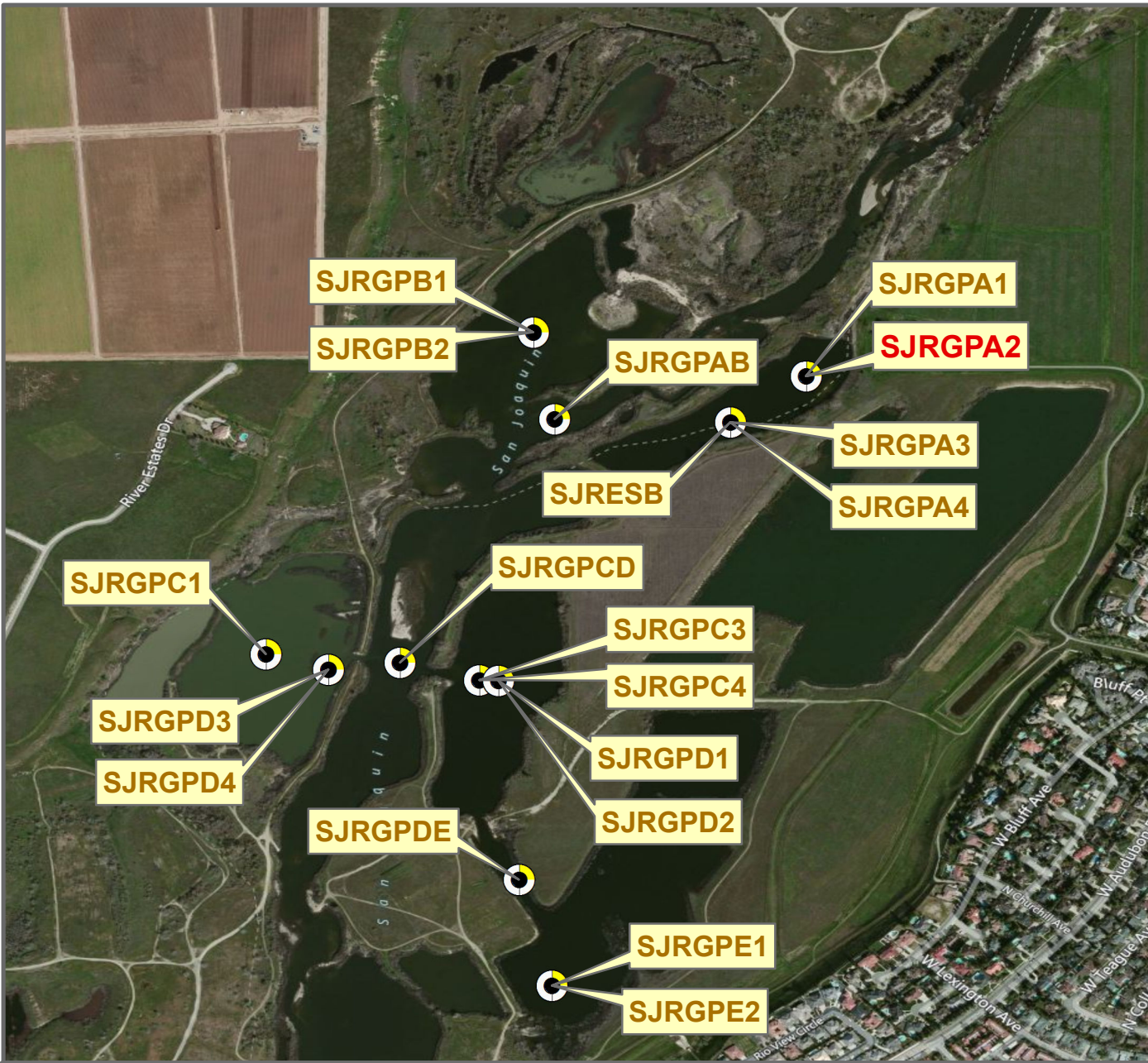
Agency = DFG
 Measurements:
 Type =
 Interval =
 Date Range = 8/29/2011 - 1/5/2012

Description:
 surface temp

Ground Surface Elevation (ft) =
 Monitoring Depth (ft) =



Monitoring Location SJRGPA1



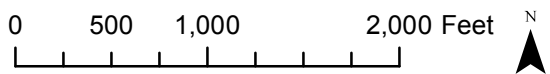
Reach = 1A
River Mile = 254.1
Madera County

X = -119.8029 Y = 36.8662 Status =
(Horizontal Datum is NAD83)
Distance From River Centerline (ft)=
Reference Elevation (ft NAVD88) =
Site = SJR Gravel Pit A2

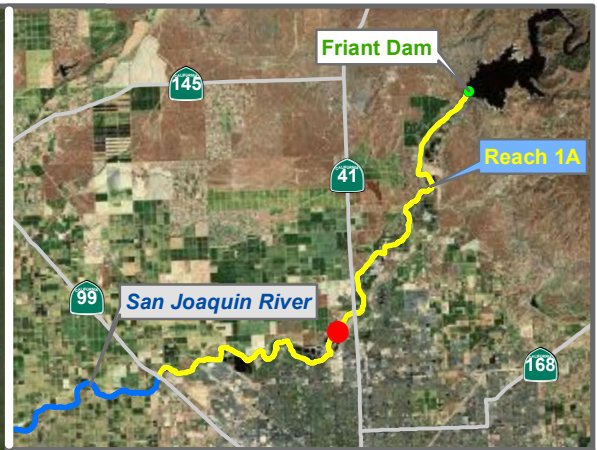
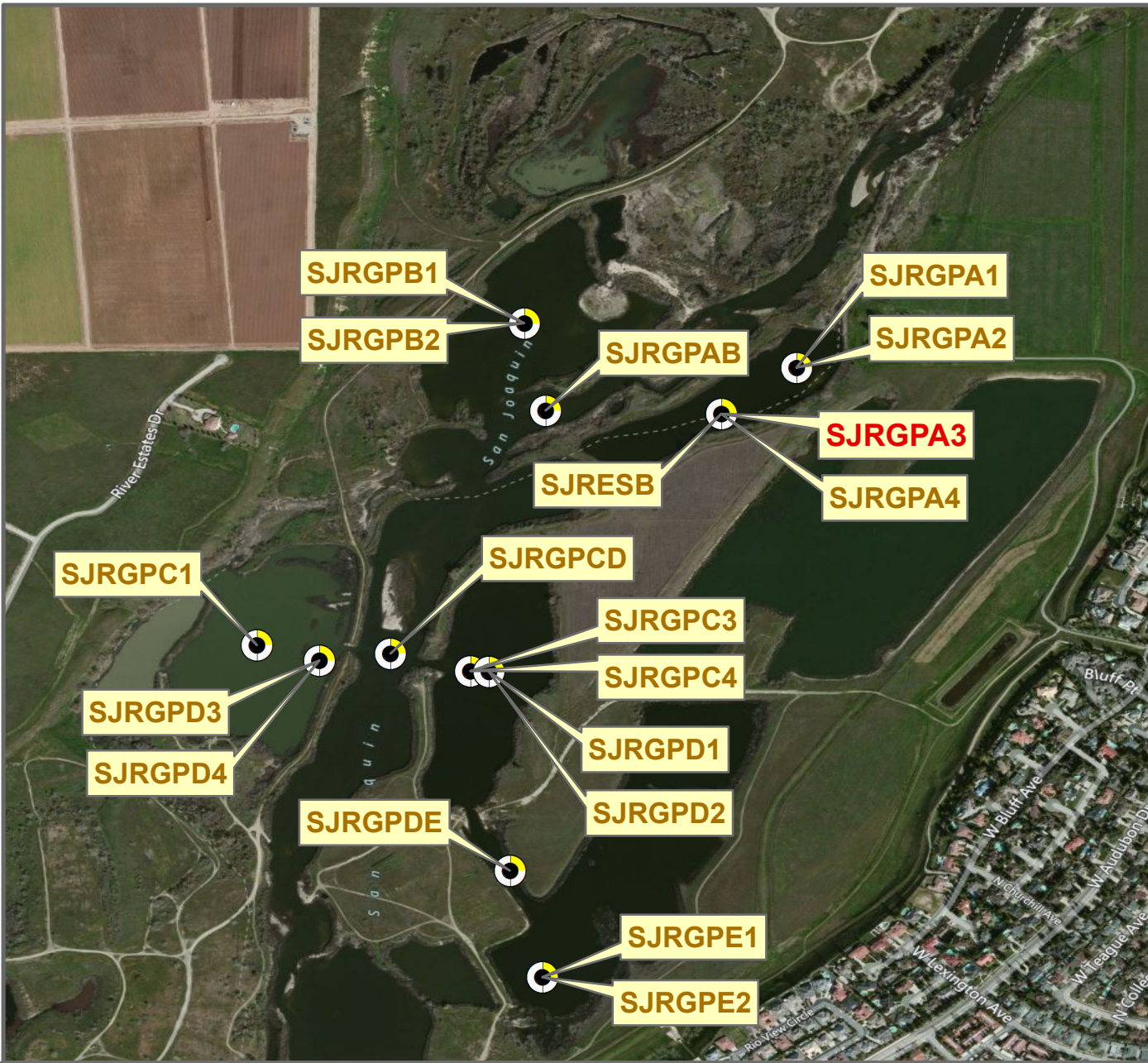
Agency = DFG
Measurements:
Type =
Interval =
Date Range = 8/29/2011 - 1/5/2012

Description:
temp at depth

Ground Surface Elevation (ft) =
Monitoring Depth (ft) =



Monitoring Location SJRGPA2



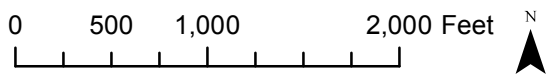
Reach = 1A
 River Mile = 254.1
 Madera County
 Channel Bank

X = -119.8042 Y = 36.8654 Status = Existing
 (Horizontal Datum is NAD83)
 Distance From River (ft)= 507
 Reference Elevation (ft NAVD88) =
 Site = Gravel Pit A

Agency = DFG
 Measurements:
 Type = Datalogger
 Interval = Hourly
 Date Range = 12/16/2009 - 7/1/2010

Description:
 Downstream of 41 bridge. Logger in middle of pond
 approx. two feet below surface.

Ground Surface Elevation (ft) =
 Monitoring Depth (ft) = 1 ft below ws



Monitoring Location SJRGPA3

* = assumed value
 bgs = below ground surface
 NR = not recorded



Reach = 1A
 River Mile = 254.1
 Madera County
 Channel Bank

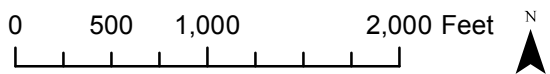
X = -119.8042 Y = 36.8654 Status = Lost
 (Horizontal Datum is NAD83)
 Distance From River (ft) = 507
 Reference Elevation (ft NAVD88) =
 Site = Gravel Pit A

Agency = DFG
 Measurements:
 Type = Datalogger
 Interval = Hourly
 Timeseries unavailable

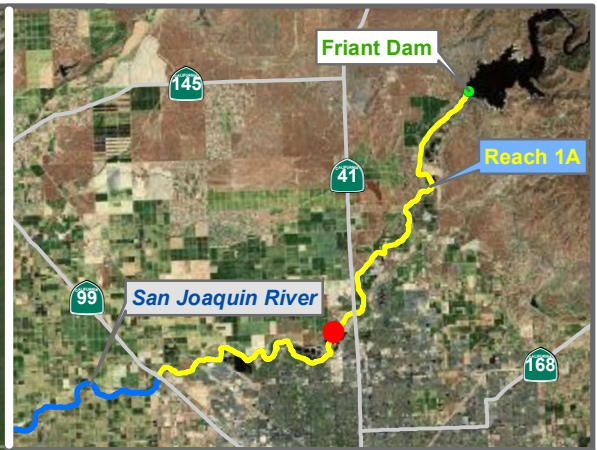
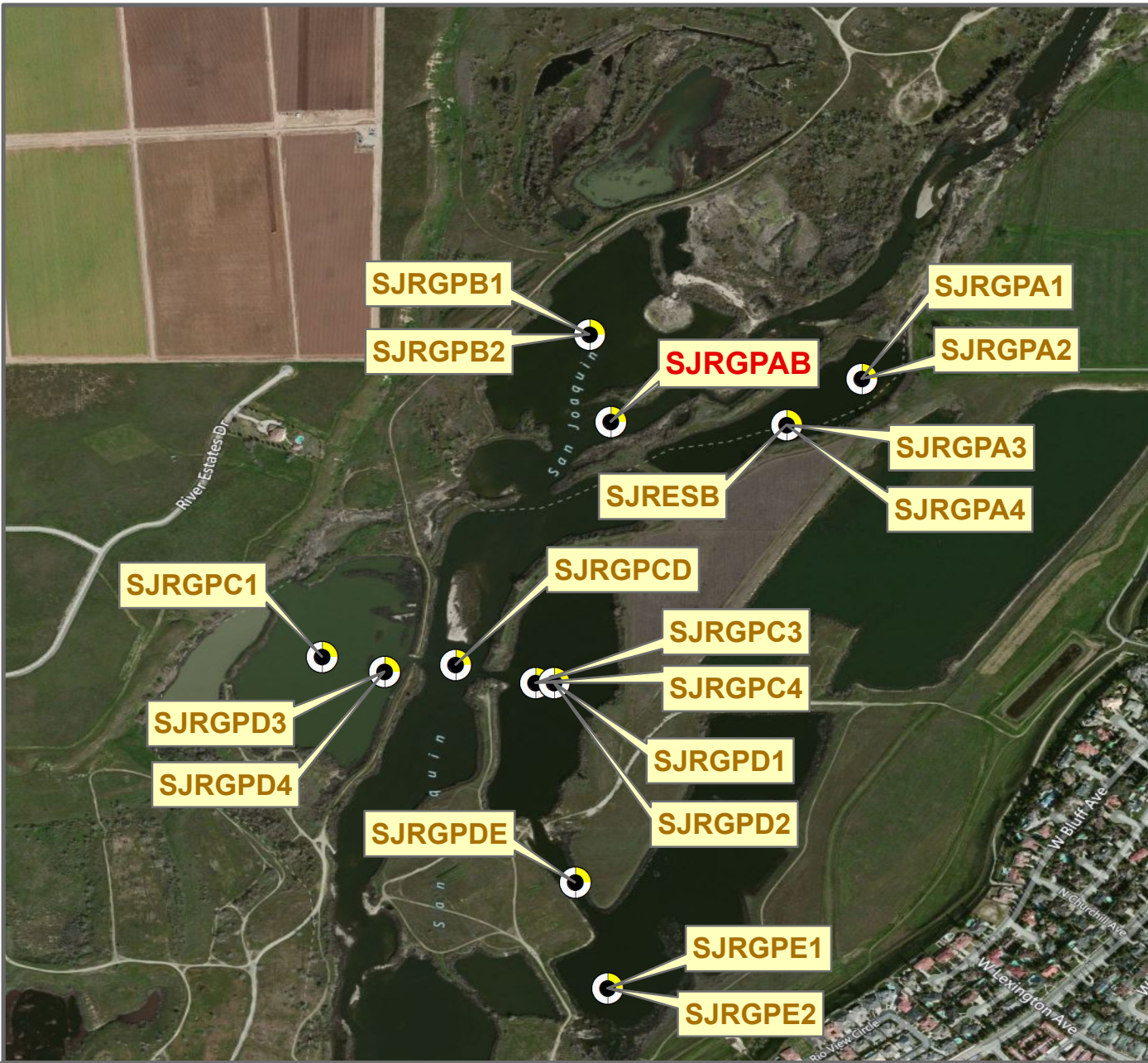
Description:
 Downstream of 41 bridge. Lost during IFP 2010

Ground Surface Elevation (ft) =
 Monitoring Depth (ft) = 1 ft above gs

Monitoring Location SJRGPA4



* = assumed value
 bgs = below ground surface
 NR = not recorded



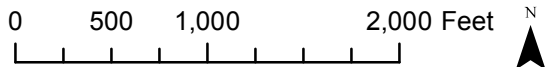
Reach = 1A
River Mile = 254
Madera County

X = -119.8072 Y = 36.8654 Status =
(Horizontal Datum is NAD83)
Distance From River Centerline (ft)=
Reference Elevation (ft NAVD88) =
Site = SJR Gravel Pit AB

Agency = DFG
Measurements:
Type =
Interval =
Date Range = 8/29/2011 - 12/19/2011

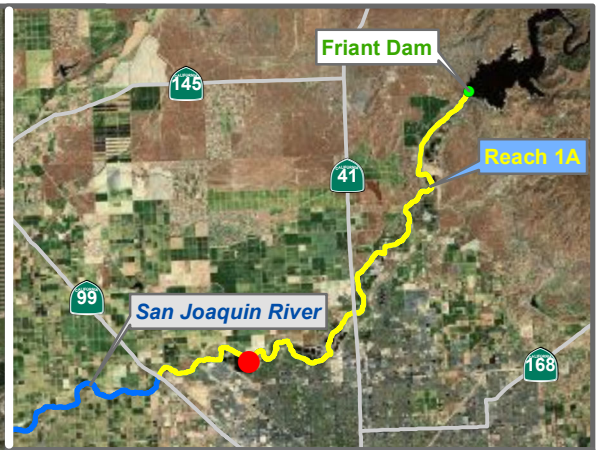
Description:
in-stream temp

Ground Surface Elevation (ft) =
Monitoring Depth (ft) =



Temperature

Monitoring Location SJRGPAB



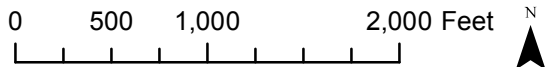
Reach = 1A
 River Mile = 248.1
 Fresno County
 Channel Bank

X = -119.8680 Y = 36.8500 Status =
 (Horizontal Datum is NAD83)
 Distance From River (ft) = 366
 Reference Elevation (ft NAVD88) =
 Site = Gravel Pit B

Agency = DFG
 Measurements:
 Type = Datalogger
 Interval =
 Timeseries unavailable

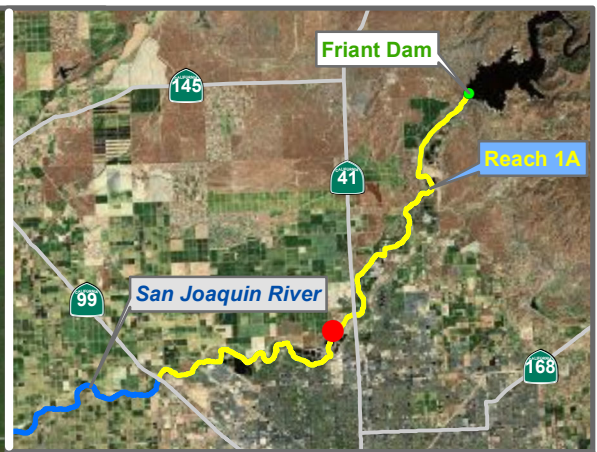
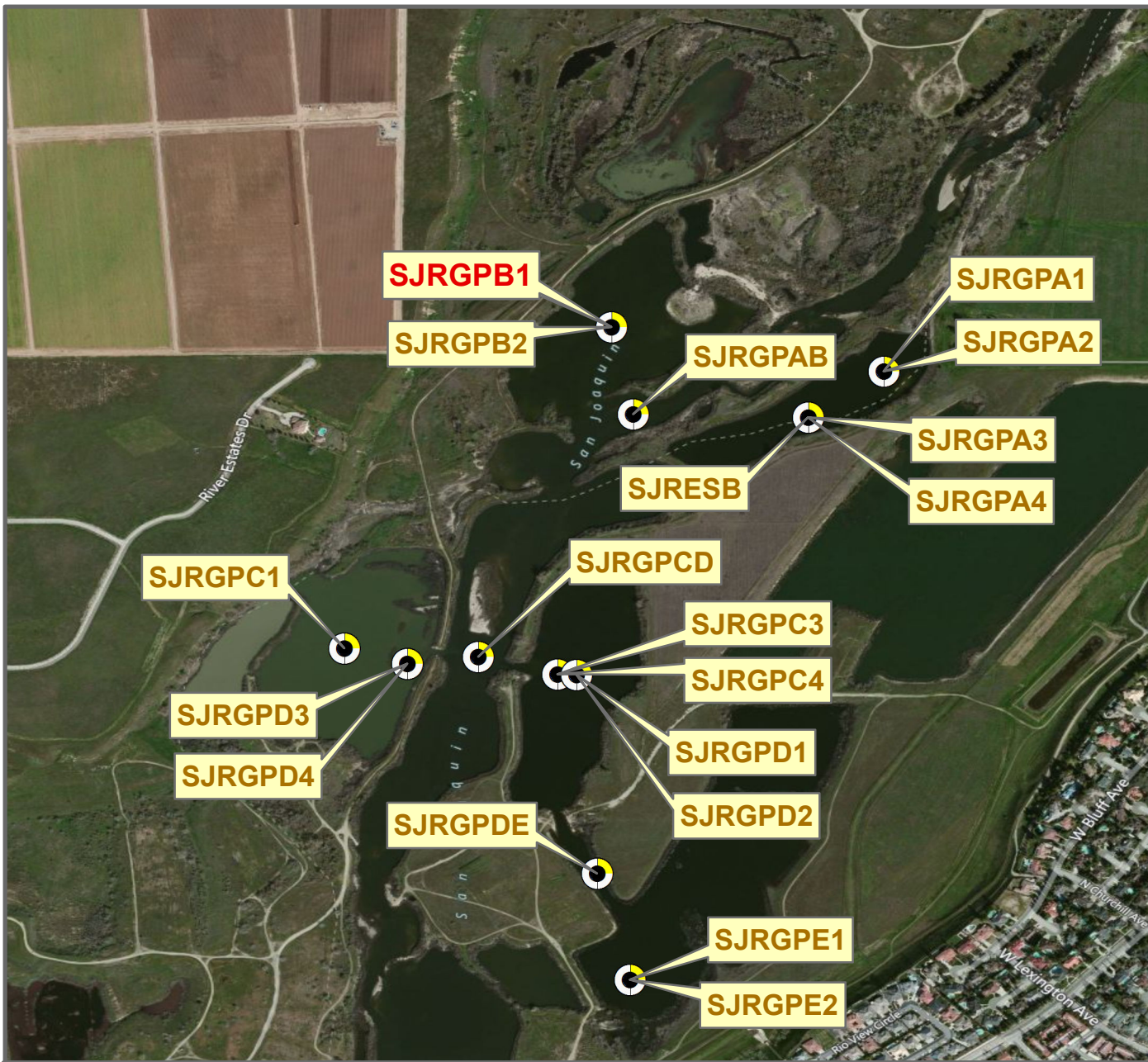
Description:
 Downstream of 41 bridge - data lost during IFP.

Ground Surface Elevation (ft) =
 Monitoring Depth (ft) =



 Temperature

Monitoring Location SJRGPB



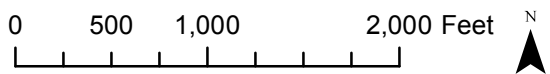
Reach = 1A
River Mile = 254.1
Madera County

X = -119.8076 Y = 36.8670 Status =
(Horizontal Datum is NAD83)
Distance From River Centerline (ft) =
Reference Elevation (ft NAVD88) =
Site = SJR Gravel Pit B1

Agency = DFG
Measurements:
Type =
Interval =
Date Range = 8/29/2011 - 12/19/2011

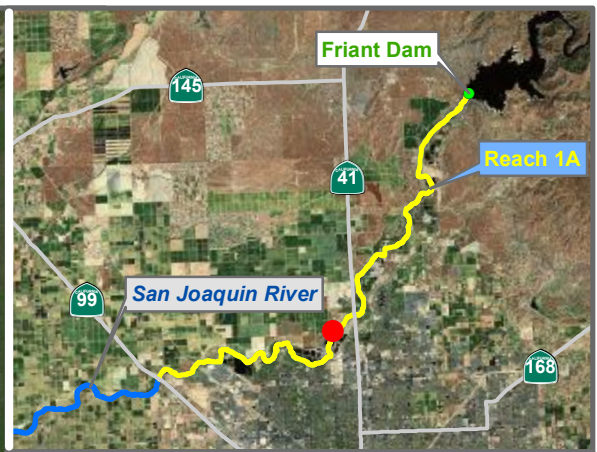
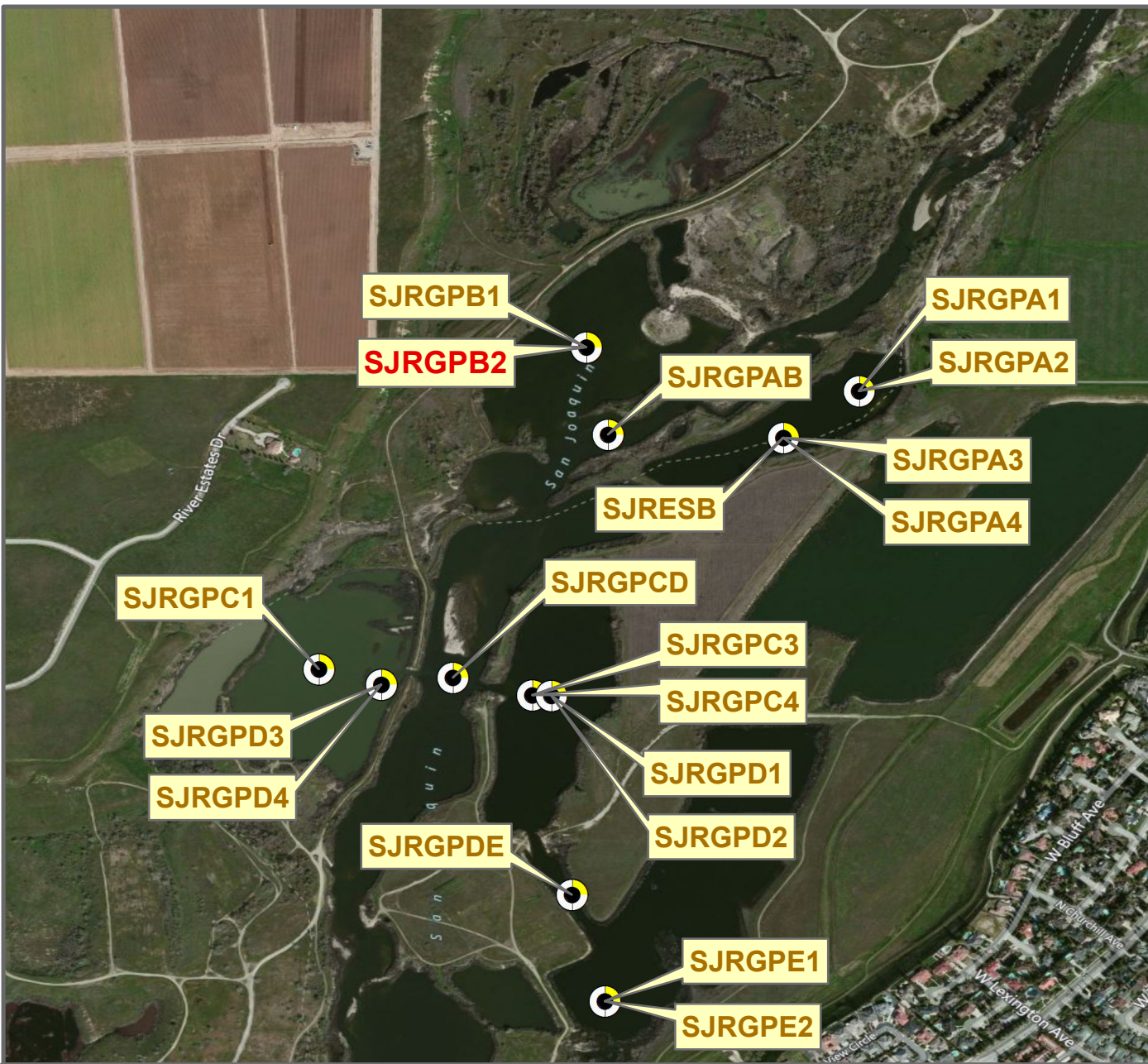
Description:
surface temp

Ground Surface Elevation (ft) =
Monitoring Depth (ft) =



Monitoring Location SJRGPB1

* = assumed value
bgs = below ground surface
NR = not recorded



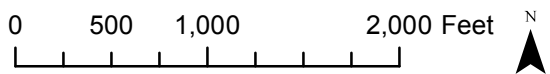
Reach = 1A
 River Mile = 254.1
 Madera County

X = -119.8076 Y = 36.8670 Status =
 (Horizontal Datum is NAD83)
 Distance From River Centerline (ft)=
 Reference Elevation (ft NAVD88) =
 Site = SJR Gravel Pit B2

Agency = DFG
 Measurements:
 Type =
 Interval =
 Date Range = 8/29/2011 - 12/19/2011

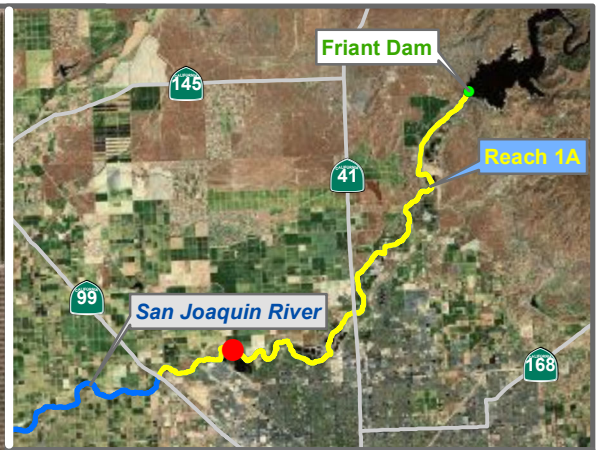
Description:
 temp at depth

Ground Surface Elevation (ft) =
 Monitoring Depth (ft) =



Monitoring Location SJRGPB2

* = assumed value
 bgs = below ground surface
 NR = not recorded



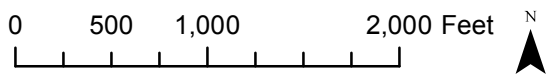
Reach = 1A
 River Mile = 247.5
 Madera County
 Channel Bank

X = -119.8795 Y = 36.8568 Status =
 (Horizontal Datum is NAD83)
 Distance From River (ft) = 10
 Reference Elevation (ft NAVD88) =
 Site = Gravel Pit C

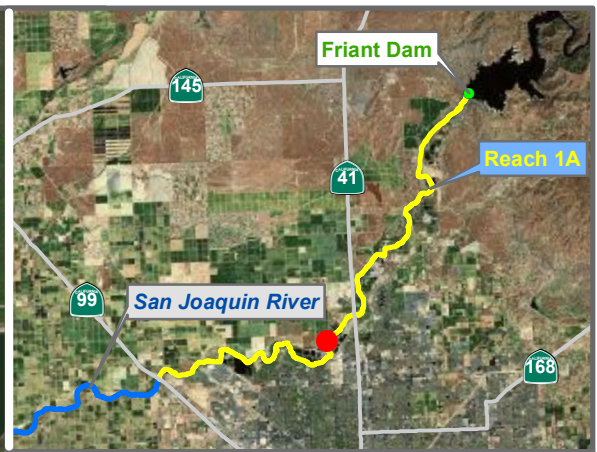
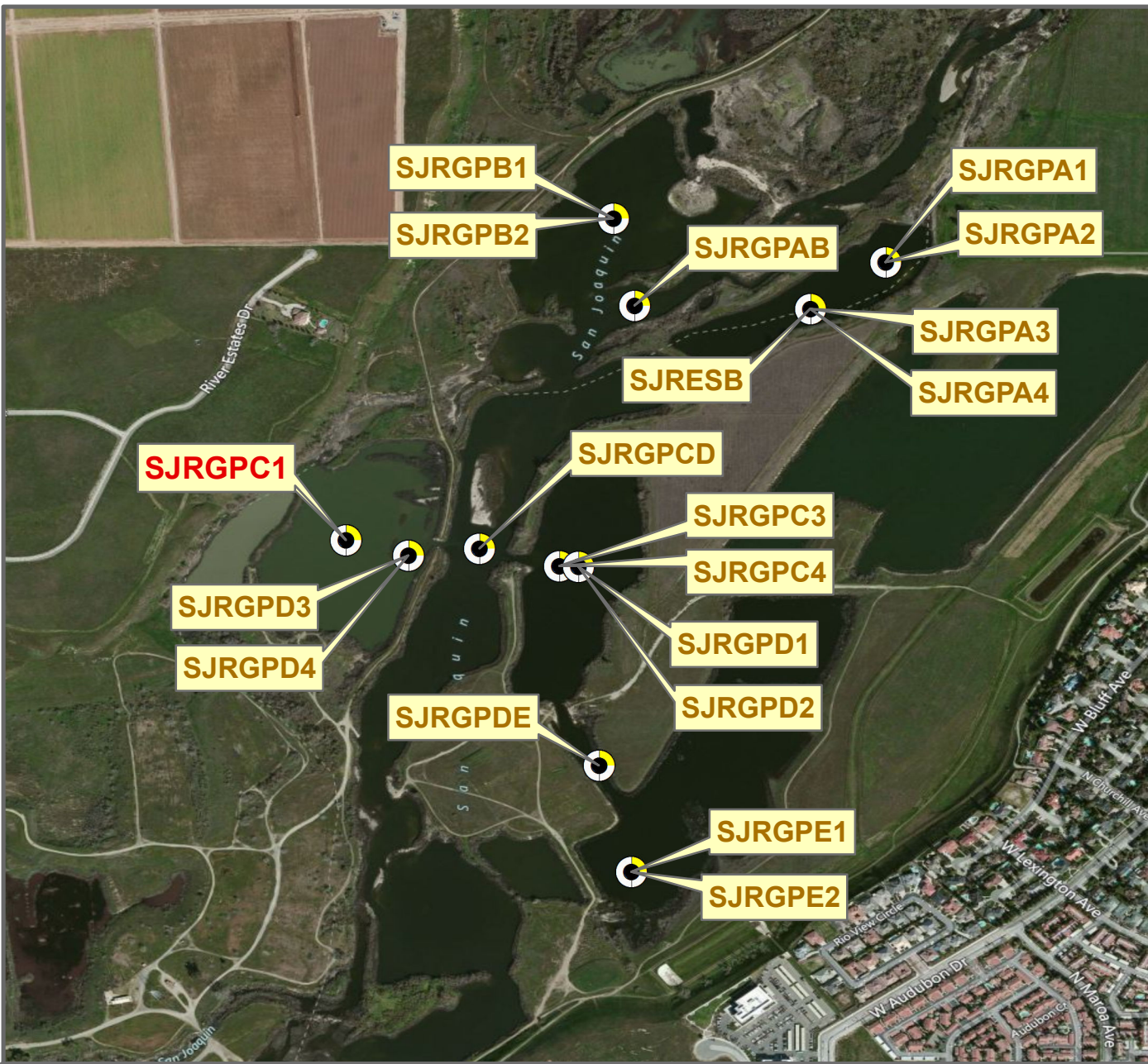
Agency = DFG
 Measurements:
 Type = Datalogger
 Interval =
 Timeseries unavailable

Description:
 Downstream of 41 bridge. data lost during IFP.

Ground Surface Elevation (ft) =
 Monitoring Depth (ft) =



Monitoring Location SJRGPC



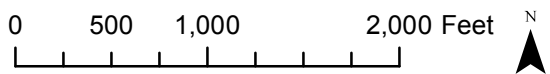
Reach = 1A
 River Mile = 253.5
 Fresno County

X = -119.8122 Y = 36.8614 Status =
 (Horizontal Datum is NAD83)
 Distance From River Centerline (ft)=
 Reference Elevation (ft NAVD88) =
 Site = SJR Gravel Pit C1

Agency = DFG
 Measurements:
 Type =
 Interval =
 Date Range = 8/30/2011 - 12/19/2011

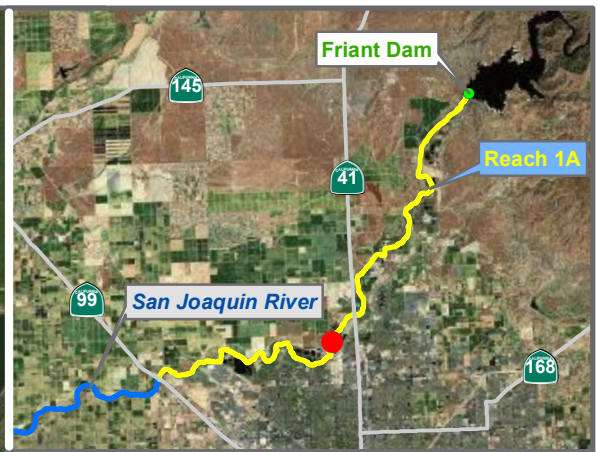
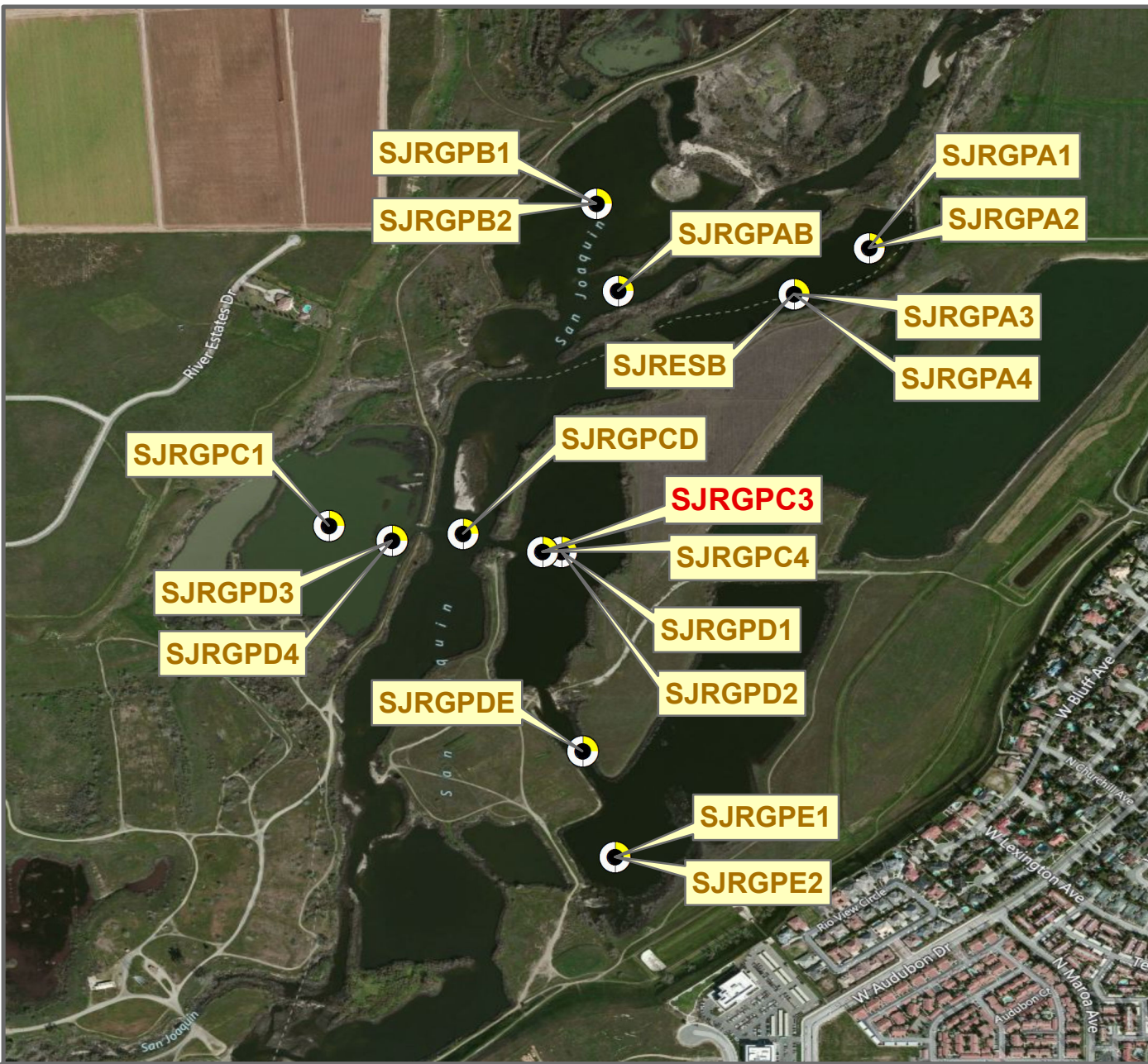
Description:
 mid-depth

Ground Surface Elevation (ft) =
 Monitoring Depth (ft) =



Monitoring Location SJRGPC1

* = assumed value
 bgs = below ground surface
 NR = not recorded



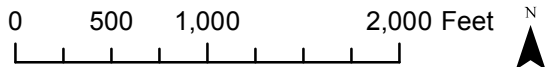
Reach = 1A
 River Mile = 253.7
 Fresno County
 Channel Bank

X = -119.8085 Y = 36.8609 Status = Lost
 (Horizontal Datum is NAD83)
 Distance From River (ft) = 539
 Reference Elevation (ft NAVD88) =
 Site = Gravel Pit C

Agency = DFG
 Measurements:
 Type = Datalogger
 Interval = Hourly
 Date Range = 7/20/2010 - 12/27/2010

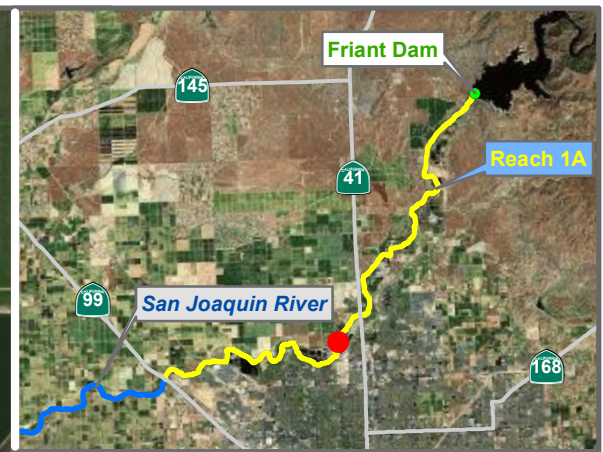
Description:
 Downstream of 41 bridge. data lost during IFP

Ground Surface Elevation (ft) =
 Monitoring Depth (ft) = 1 ft below ws



Monitoring Location SJRGPC3

* = assumed value
 bgs = below ground surface
 NR = not recorded



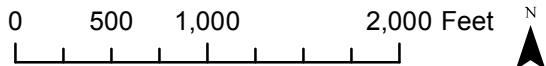
Reach = 1A
 River Mile = 253.7
 Fresno County
 Channel Bank

X = -119.8085 Y = 36.8609 Status = Lost
 (Horizontal Datum is NAD83)
 Distance From River (ft) = 539
 Reference Elevation (ft NAVD88) =
 Site = Gravel Pit C

Agency = DFG
 Measurements:
 Type = Datalogger
 Interval = Hourly
 Timeseries unavailable

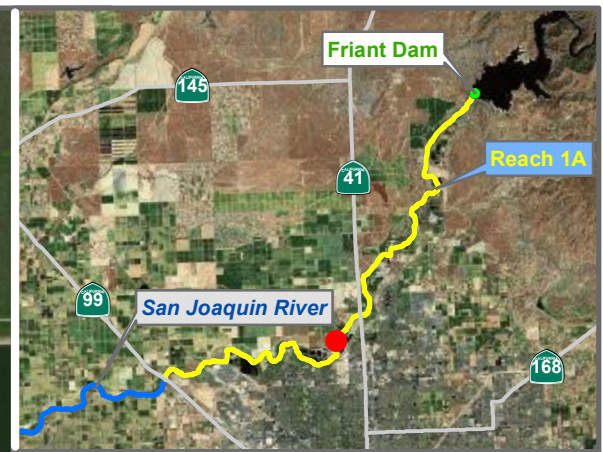
Description:
 Downstream of 41 bridge. data lost during IFP

Ground Surface Elevation (ft) =
 Monitoring Depth (ft) = 1 ft above gs



 Temperature

Monitoring Location SJRGPC4



Reach = 1A
 River Mile = 253.5
 Fresno County

X = -119.8099 Y = 36.8613 Status =
 (Horizontal Datum is NAD83)
 Distance From River Centerline (ft)=
 Reference Elevation (ft NAVD88) =
 Site = SJR Gravel Pit CD

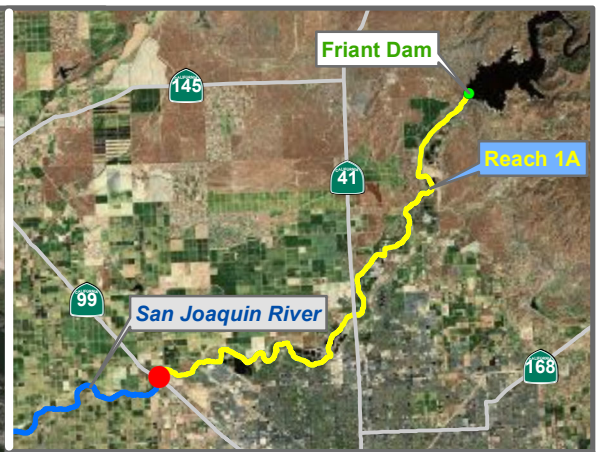
Agency = DFG
 Measurements:
 Type =
 Interval =
 Date Range = 10/11/2011 - 12/19/2011

Description:
 in-stream temp

Ground Surface Elevation (ft) =
 Monitoring Depth (ft) =

Monitoring Location SJRGPCD





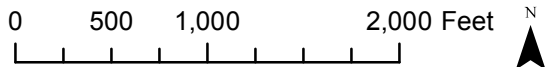
Reach = 1A
 River Mile = 243.1
 Fresno County
 Channel Bank

X = -119.9325 Y = 36.8439 Status =
 (Horizontal Datum is NAD83)
 Distance From River (ft) = 8
 Reference Elevation (ft NAVD88) =
 Site = Gravel Pit D

Agency = DFG
 Measurements:
 Type = Datalogger
 Interval =
 Timeseries unavailable

Description:
 Downstream of 41 bridge. One logger in middle of pond approx. two feet below surface. Data lost.

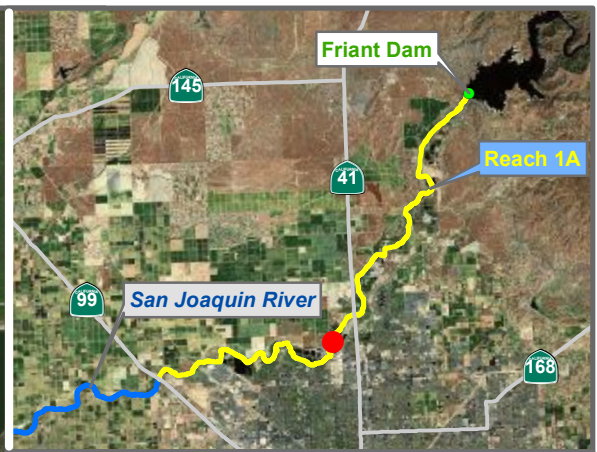
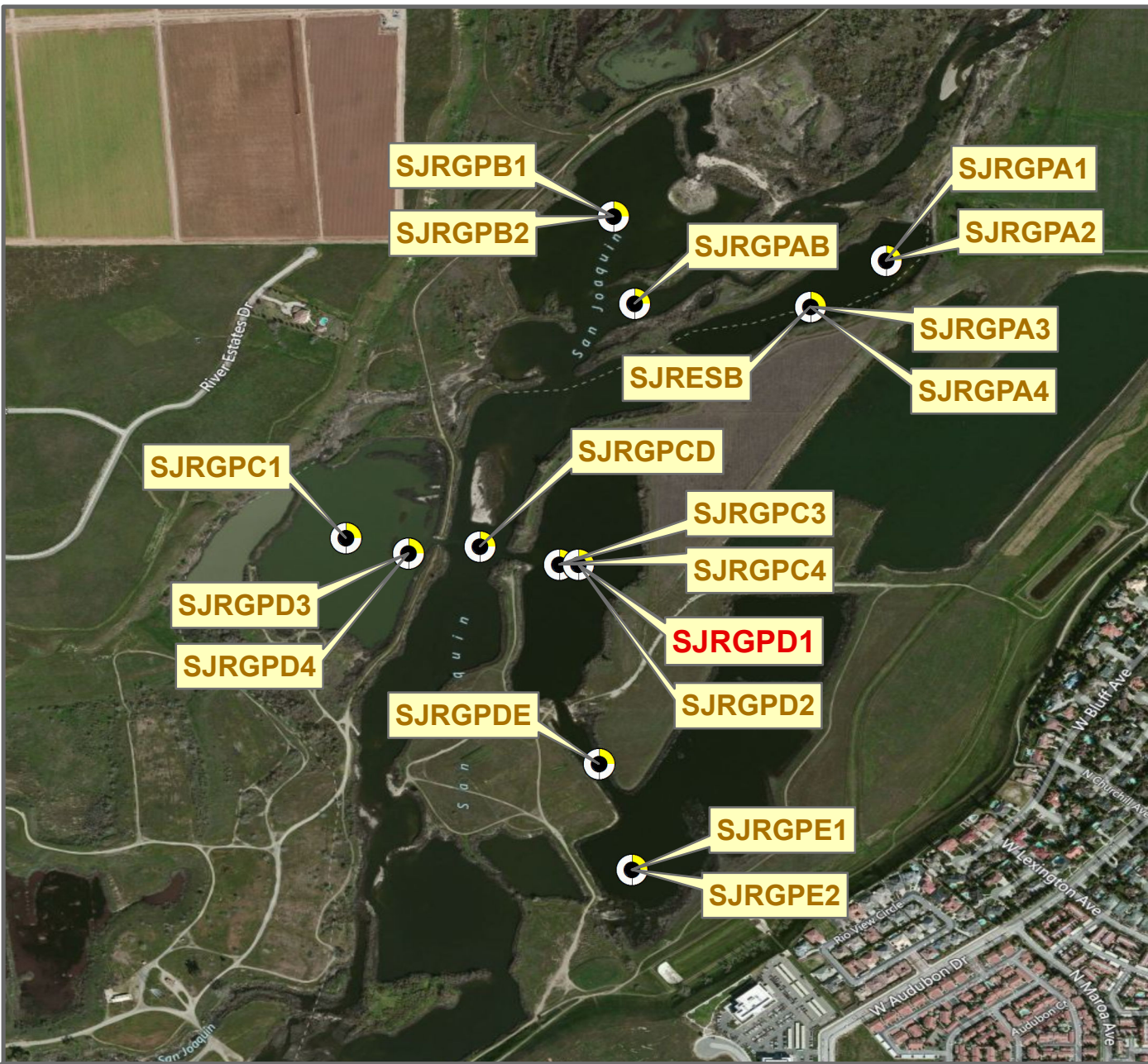
Ground Surface Elevation (ft) =
 Monitoring Depth (ft) =



Temperature

Monitoring Location SJRGPD

* = assumed value
 bgs = below ground surface
 NR = not recorded



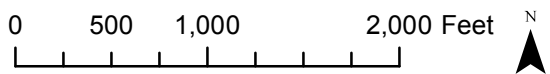
Reach = 1A
 River Mile = 253.5
 Fresno County

X = -119.8082 Y = 36.8609 Status =
 (Horizontal Datum is NAD83)
 Distance From River Centerline (ft)=
 Reference Elevation (ft NAVD88) =
 Site = SJR Gravel Pit D1

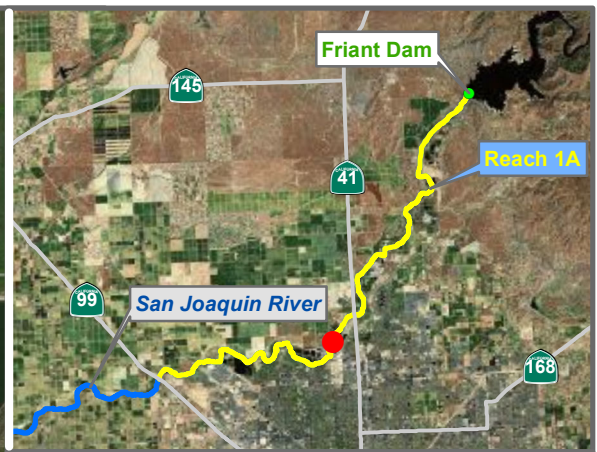
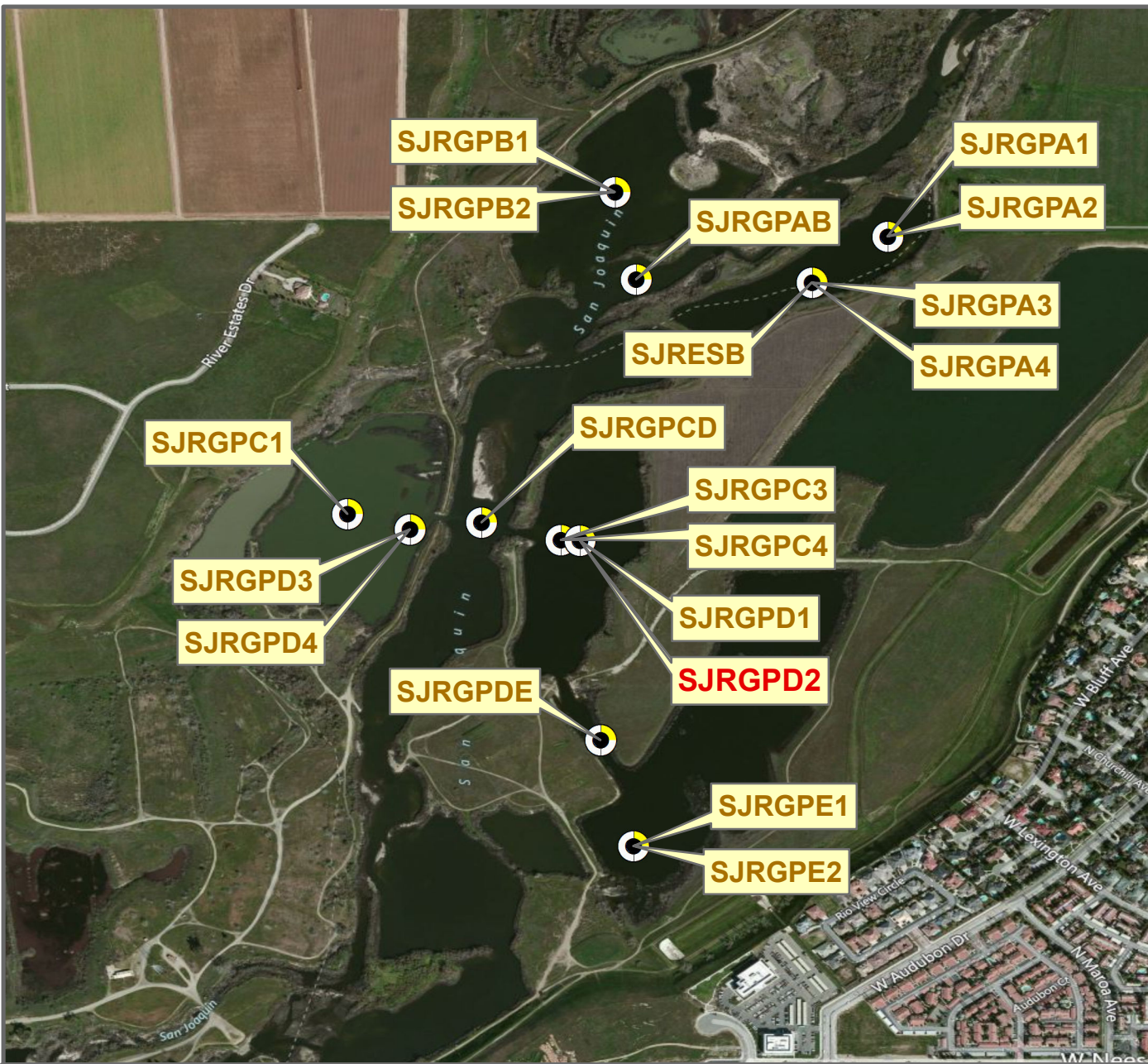
Agency = DFG
 Measurements:
 Type =
 Interval =
 Timeseries unavailable

Description:
 surface temp

Ground Surface Elevation (ft) =
 Monitoring Depth (ft) =



Monitoring Location SJRGPD1



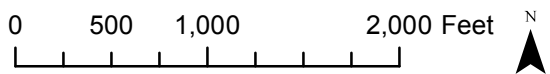
Reach = 1A
River Mile = 253.5
Fresno County

X = -119.8082 Y = 36.8609 Status =
(Horizontal Datum is NAD83)
Distance From River Centerline (ft)=
Reference Elevation (ft NAVD88) =
Site = SJR Gravel Pit D2

Agency = DFG
Measurements:
Type =
Interval =
Timeseries unavailable

Description:
temp at depth

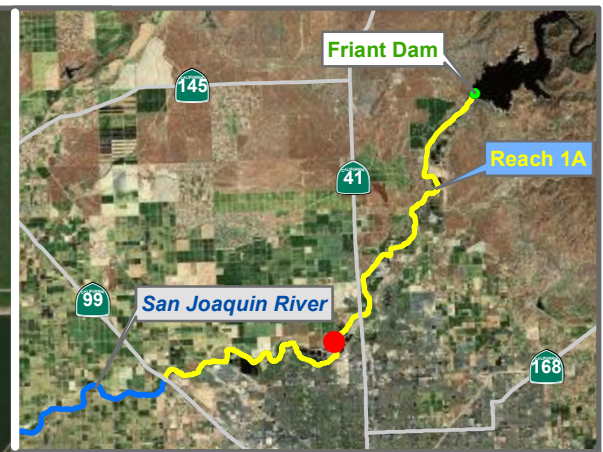
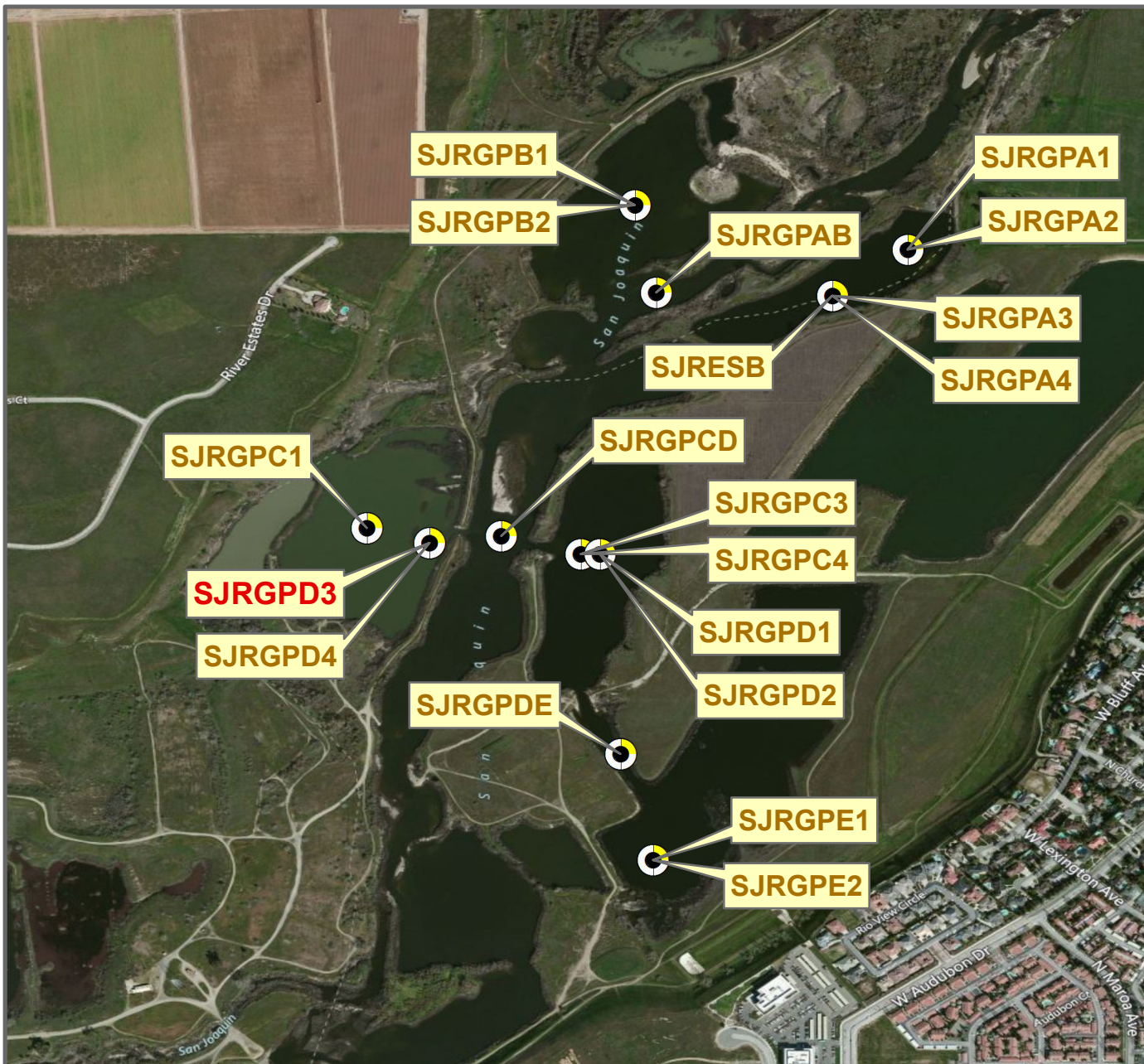
Ground Surface Elevation (ft) =
Monitoring Depth (ft) =



Monitoring Location SJRGPD2

* = assumed value
bgs = below ground surface
NR = not recorded

Last Updated:
6/28/2012
Preliminary Data



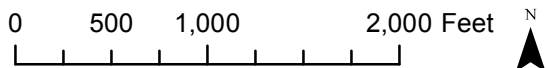
Reach = 1A
 River Mile = 253.7
 Fresno County
 Channel Bank

X = -119.8111 Y = 36.8611 Status = Lost
 (Horizontal Datum is NAD83)
 Distance From River (ft) = 398
 Reference Elevation (ft NAVD88) =
 Site = Gravel Pit D

Agency = DFG
 Measurements:
 Type = Datalogger
 Interval = Hourly
 Timeseries unavailable

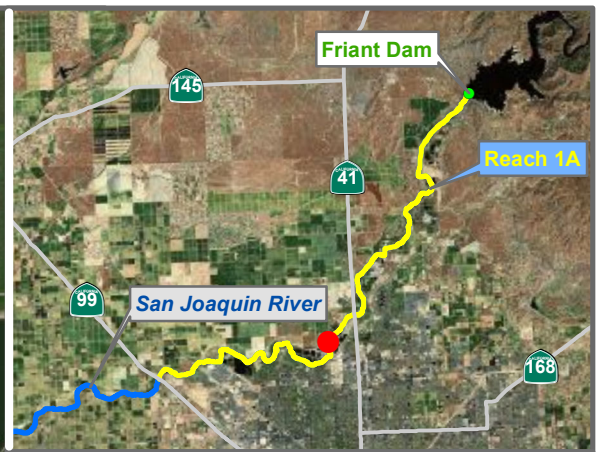
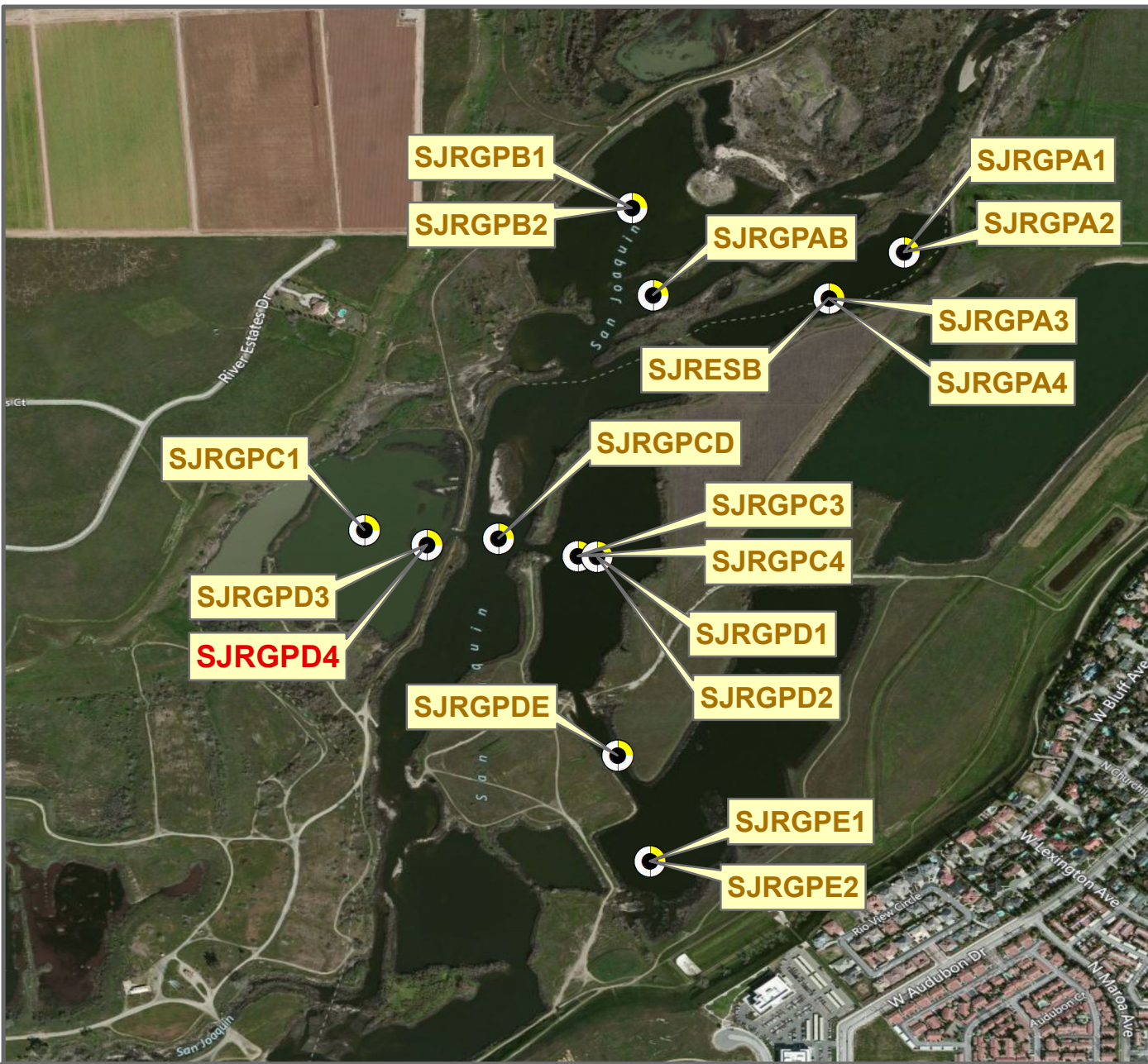
Description:
 Downstream of 41 bridge.

Ground Surface Elevation (ft) =
 Monitoring Depth (ft) = 1 ft below ws



 Temperature

Monitoring Location SJRGPD3



Reach = 1A
 River Mile = 253.7
 Fresno County
 Channel Bank

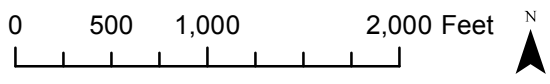
X = -119.8111 Y = 36.8611 Status = Existing
 (Horizontal Datum is NAD83)
 Distance From River (ft) = 398
 Reference Elevation (ft NAVD88) =
 Site = Gravel Pit D

Agency = DFG
 Measurements:
 Type = Datalogger
 Interval = Hourly
 Timeseries unavailable

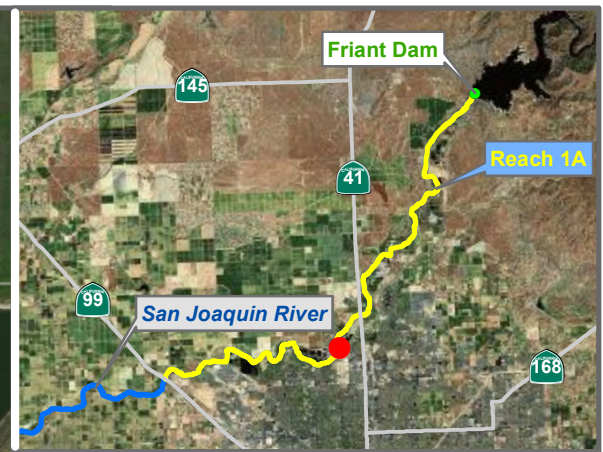
Description:
 Downstream of 41 bridge. Logger in middle of pond
 approx. two feet below surface.

Ground Surface Elevation (ft) =
 Monitoring Depth (ft) = 1 ft above gs

Monitoring Location SJRGPD4



* = assumed value
 bgs = below ground surface
 NR = not recorded



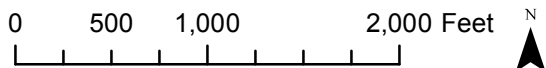
Reach = 1A
 River Mile = 253.1
 Fresno County

X = -119.8078 Y = 36.8575 Status =
 (Horizontal Datum is NAD83)
 Distance From River Centerline (ft)=
 Reference Elevation (ft NAVD88) =
 Site = SJR Gravel Pit DE

Agency = DFG
 Measurements:
 Type =
 Interval =
 Date Range = 10/11/2011 - 12/19/2011

Description:
 in-stream temp

Ground Surface Elevation (ft) =
 Monitoring Depth (ft) =

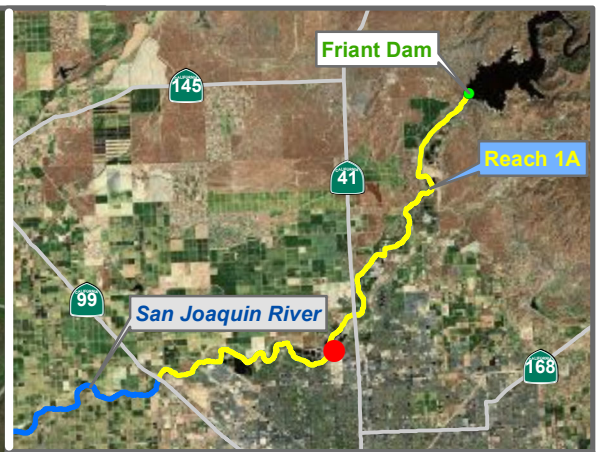
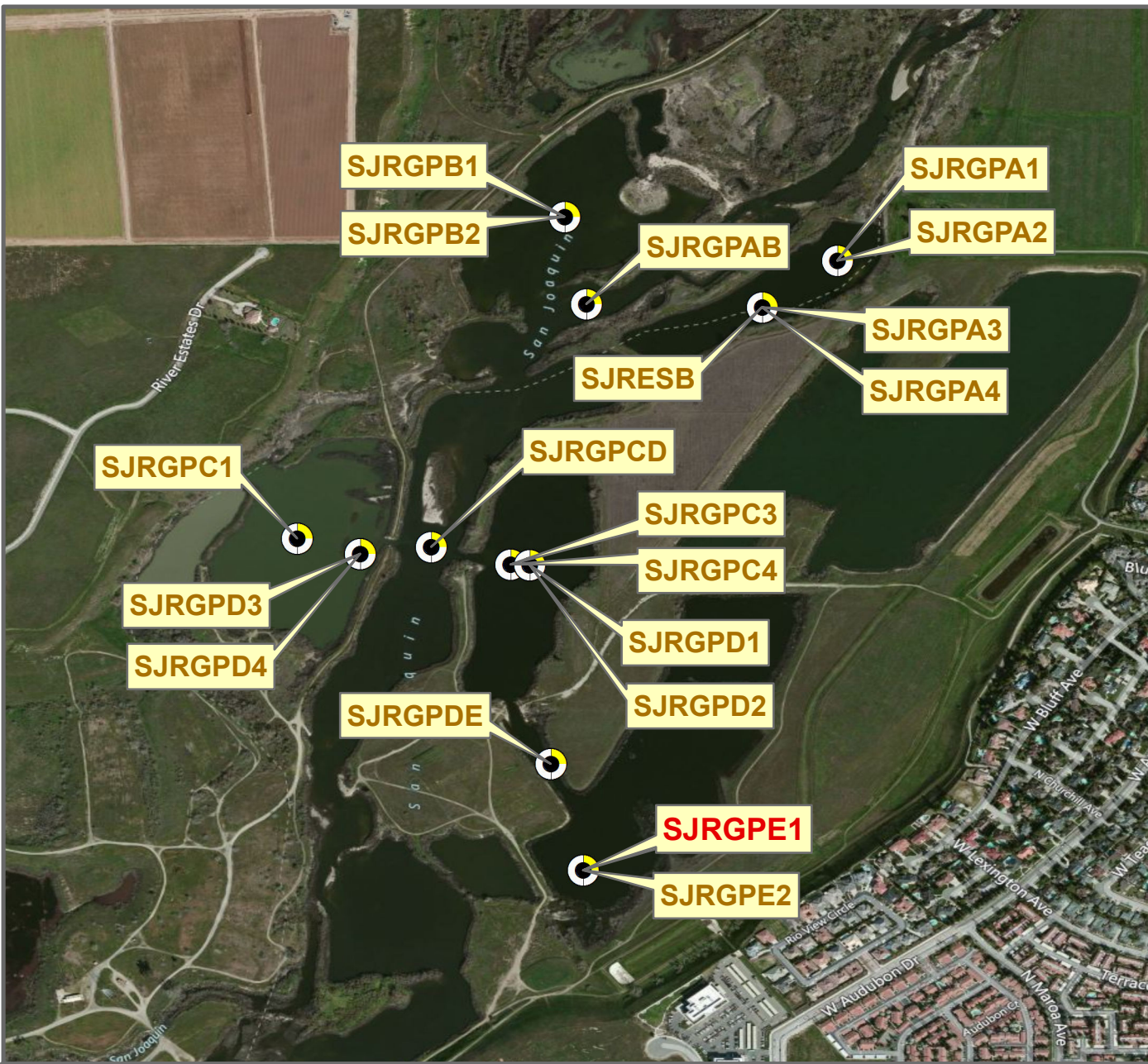


Temperature

Monitoring Location SJRGPDE

* = assumed value
 bgs = below ground surface
 NR = not recorded

Last Updated:
 6/28/2012
 Preliminary Data



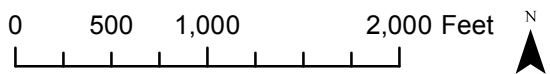
Reach = 1A
 River Mile = 253.2
 Fresno County

X = -119.8073 Y = 36.8557 Status =
 (Horizontal Datum is NAD83)
 Distance From River Centerline (ft)=
 Reference Elevation (ft NAVD88) =
 Site = SJR Gravel Pit E1

Agency = DFG
 Measurements:
 Type =
 Interval =
 Date Range = 8/29/2011 - 12/19/2011

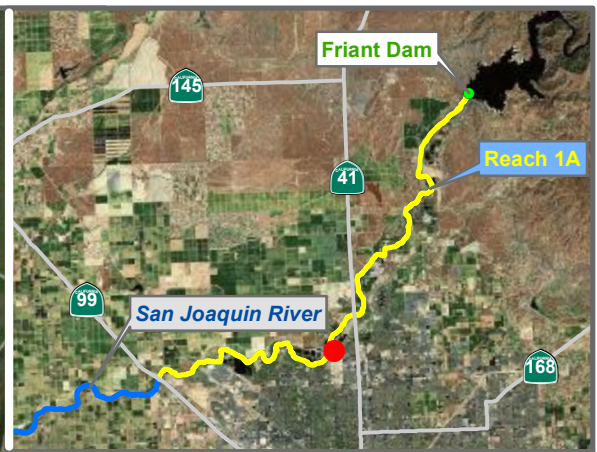
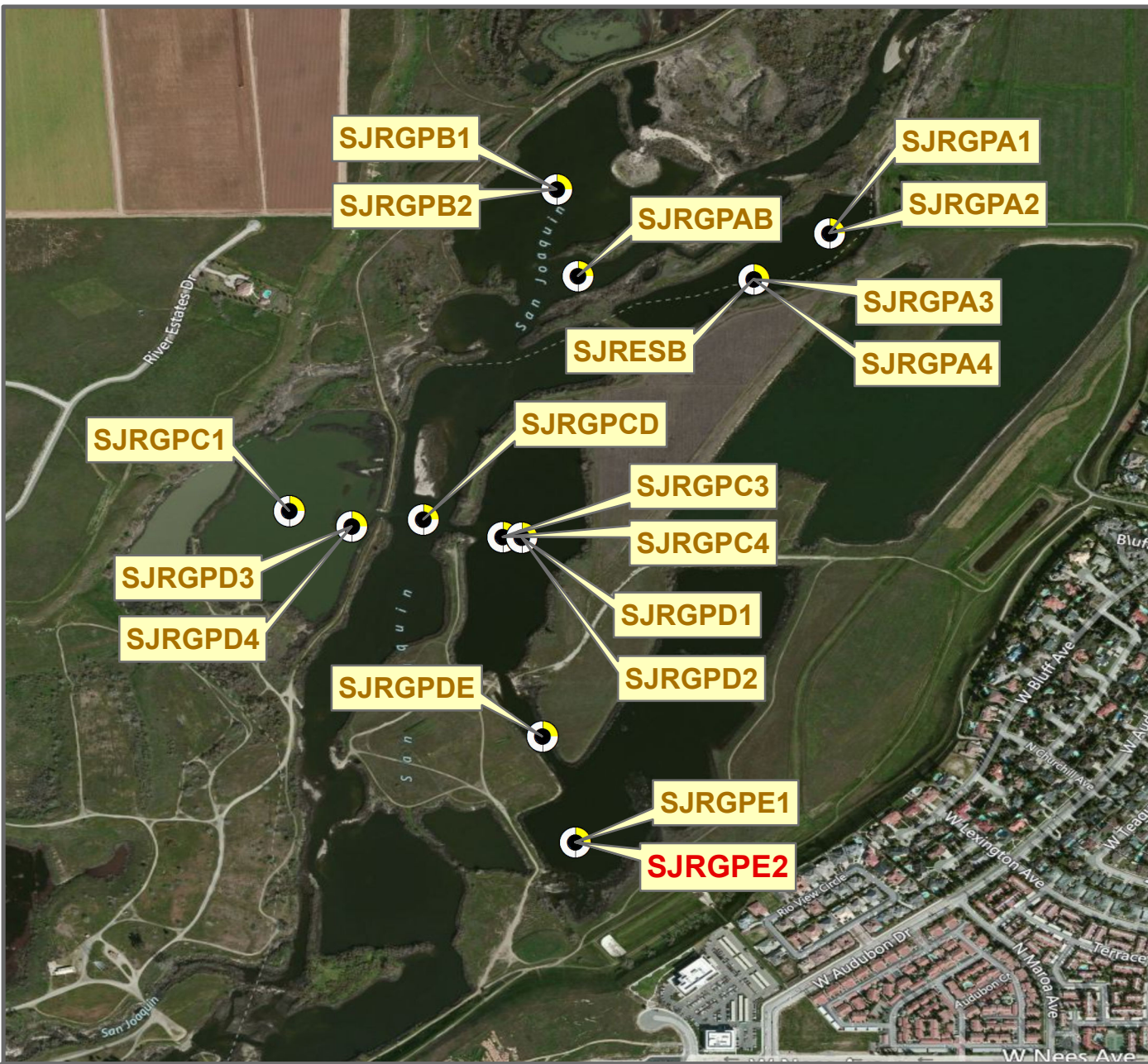
Description:
 surface temp

Ground Surface Elevation (ft) =
 Monitoring Depth (ft) =



Monitoring Location SJRGPE1

* = assumed value
 bgs = below ground surface
 NR = not recorded



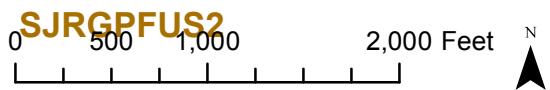
Reach = 1A
River Mile = 253.2
Fresno County

X = -119.8073 Y = 36.8557 Status =
(Horizontal Datum is NAD83)
Distance From River Centerline (ft)=
Reference Elevation (ft NAVD88) =
Site = SJR Gravel Pit E2

Agency = DFG
Measurements:
Type =
Interval =
Date Range = 8/29/2011 - 12/19/2011

Description:
temp at depth

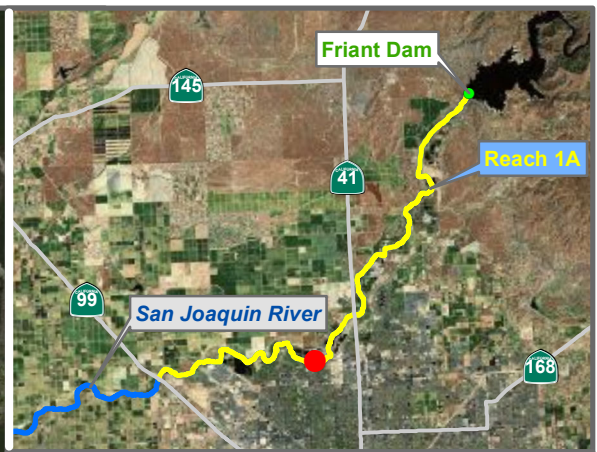
Ground Surface Elevation (ft) =
Monitoring Depth (ft) =



Monitoring Location SJRGPE2

* = assumed value
bgs = below ground surface
NR = not recorded

Last Updated:
6/28/2012
Preliminary Data



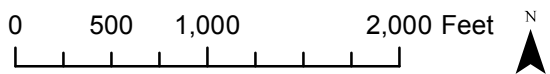
Reach = 1A Madera County
 River Mile = 252.4

X = -119.8211 Y = 36.8506 Status =
 (Horizontal Datum is NAD83)
 Distance From River Centerline (ft) =
 Reference Elevation (ft NAVD88) =
 Site = SJR Gravel Pit F-downstream 1

Agency = DFG
 Measurements:
 Type =
 Interval =
 Timeseries unavailable

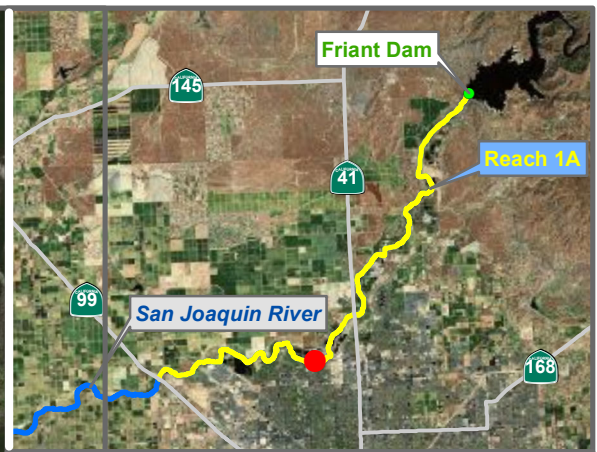
Description:
 surface temp

Ground Surface Elevation (ft) =
 Monitoring Depth (ft) =



Monitoring Location SJRGPF-down1

* = assumed value
 bgs = below ground surface
 NR = not recorded



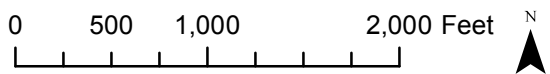
Reach = 1A
River Mile = 252.4
Madera County

X = -119.8211 Y = 36.8506 Status =
(Horizontal Datum is NAD83)
Distance From River Centerline (ft)=
Reference Elevation (ft NAVD88) =
Site = SJR Gravel Pit F-downstream 2

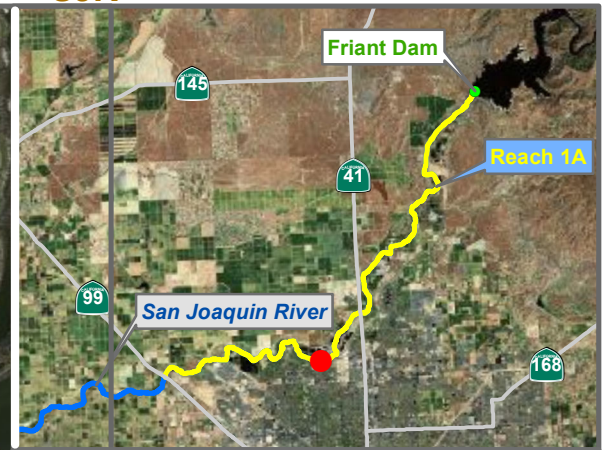
Agency = DFG
Measurements:
Type =
Interval =
Timeseries unavailable

Description:
temp at depth

Ground Surface Elevation (ft) =
Monitoring Depth (ft) =



Monitoring Location SJRGPF-down2



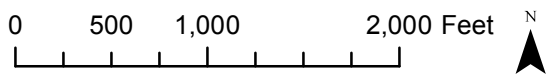
Reach = 1A Madera County
 River Mile = 252.4

X = -119.8211 Y = 36.8490 Status =
 (Horizontal Datum is NAD83)
 Distance From River Centerline (ft)=
 Reference Elevation (ft NAVD88) =
 Site = SJR Gravel Pit F River Outlet

Agency = DFG
 Measurements:
 Type =
 Interval =
 Timeseries unavailable

Description:
 in-stream temp

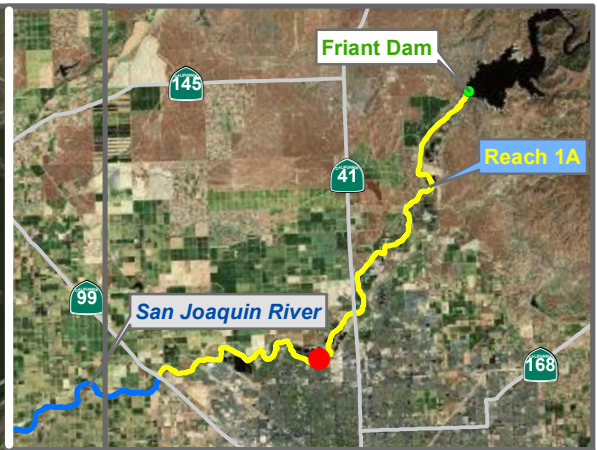
Ground Surface Elevation (ft) =
 Monitoring Depth (ft) =



Monitoring Location SJRGPF-Outlet

* = assumed value
 bgs = below ground surface
 NR = not recorded

Last Updated:
 6/28/2012
 Preliminary Data



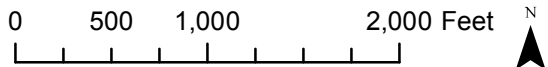
Reach = 1A Madera County
 River Mile = 252.5

X = -119.8182 Y = 36.8507 Status =
 (Horizontal Datum is NAD83)
 Distance From River Centerline (ft)=
 Reference Elevation (ft NAVD88) =
 Site = SJR Gravel Pit F-upstream 1

Agency = DFG
 Measurements:
 Type =
 Interval =
 Date Range = 8/29/2011 - 12/19/2011

Description:
 surface temp

Ground Surface Elevation (ft) =
 Monitoring Depth (ft) =

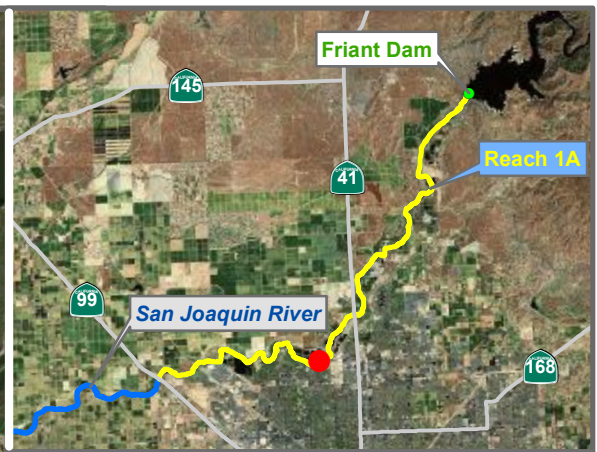


Temperature

Monitoring Location SJRGPFUS1

* = assumed value
 bgs = below ground surface
 NR = not recorded

Last Updated:
 6/28/2012
 Preliminary Data



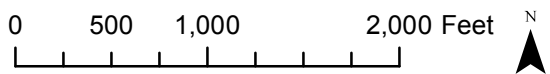
Reach = 1A Madera County
 River Mile = 252.5

X = -119.8182 Y = 36.8507 Status =
 (Horizontal Datum is NAD83)
 Distance From River Centerline (ft) =
 Reference Elevation (ft NAVD88) =
 Site = SJR Gravel Pit F-upstream 2

Agency = DFG
 Measurements:
 Type =
 Interval =
 Date Range = 8/29/2011 - 12/19/2011

Description:
 temp at depth

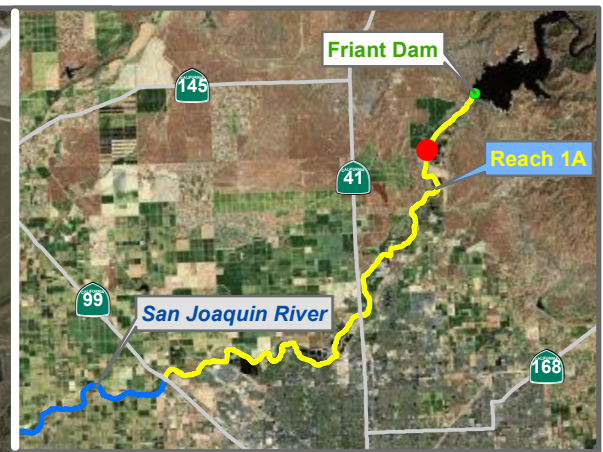
Ground Surface Elevation (ft) =
 Monitoring Depth (ft) =



Monitoring Location SJRGPFUS2

* = assumed value
 bgs = below ground surface
 NR = not recorded

Last Updated:
 6/28/2012
 Preliminary Data



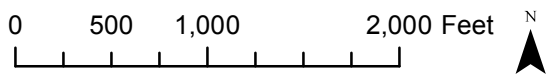
Reach = 1A
 River Mile = 264.7
 Madera County
 Right Bank

X = -119.7404 Y = 36.9690 Status = Existing
 (Horizontal Datum is NAD83)
 Distance From River (ft) = 52
 Reference Elevation (ft NAVD88) =
 Site = Lost Lake

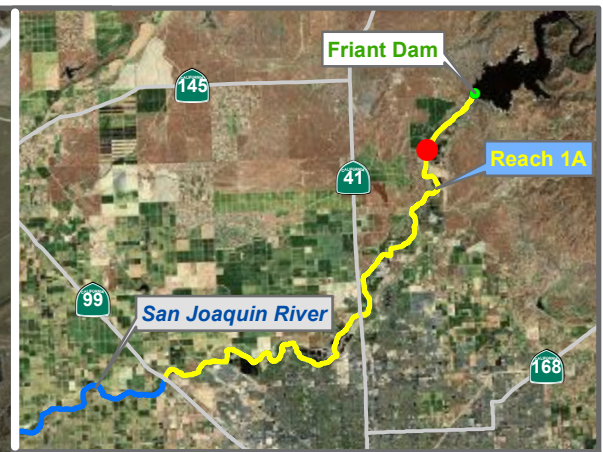
Agency = DFG
 Measurements:
 Type = Datalogger
 Interval = Hourly
 Timeseries unavailable

Description:
 Downstream of Lost Lake Park. Split channel on right. Cabled to tree stump on RR.

Ground Surface Elevation (ft) =
 Monitoring Depth (ft) = 1 ft above gs



Monitoring Location SJRLL



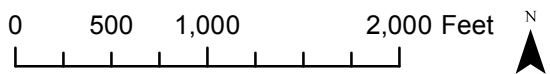
Reach = 1A
 River Mile = 264.7
 Madera County
 Right Bank

X = -119.7404 Y = 36.9690 Status = Lost
 (Horizontal Datum is NAD83)
 Distance From River (ft) = 52
 Reference Elevation (ft NAVD88) =
 Site = Lost Lake

Agency = DFG
 Measurements:
 Type = Datalogger
 Interval = Hourly
 Timeseries unavailable

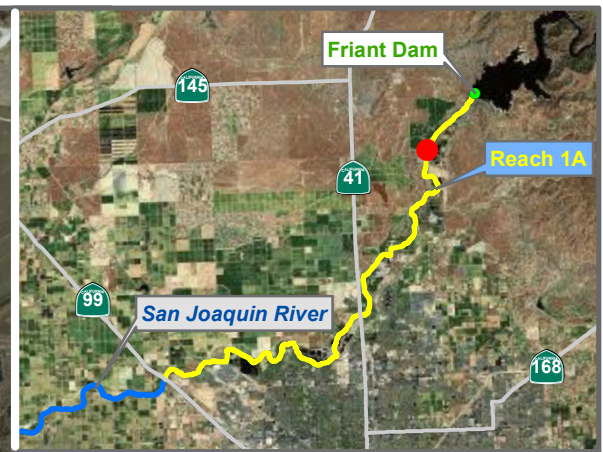
Description:
 Downstream of Lost Lake Park. Split channel on right. Cabled to tree stump on RR.

Ground Surface Elevation (ft) =
 Monitoring Depth (ft) = 1 ft below ws



Monitoring Location SJRLL1

* = assumed value
 bgs = below ground surface
 NR = not recorded



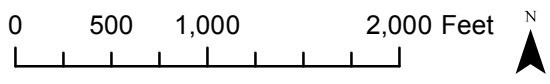
Reach = 1A
 River Mile = 264.7
 Madera County
 Right Bank

X = -119.7404 Y = 36.9690 Status = Lost
 (Horizontal Datum is NAD83)
 Distance From River (ft) = 52
 Reference Elevation (ft NAVD88) =
 Site = Lost Lake

Agency = DFG
 Measurements:
 Type = Datalogger
 Interval = Hourly
 Timeseries unavailable

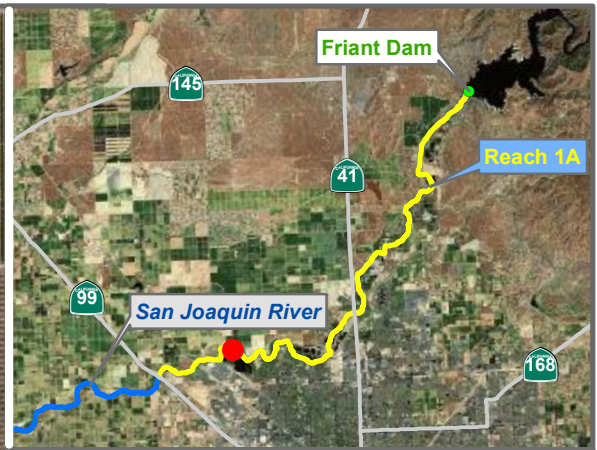
Description:
 Downstream of Lost Lake Park. Split channel on right. Cabled to tree stump on RR.

Ground Surface Elevation (ft) =
 Monitoring Depth (ft) = 1 ft above gs



Monitoring Location SJRLL2

* = assumed value
 bgs = below ground surface
 NR = not recorded



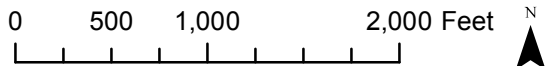
Reach = 1A
 River Mile = 247.5
 Madera County
 Left Bank

X = -119.8795 Y = 36.8568 Status = Existing
 (Horizontal Datum is NAD83)
 Distance From River (ft) = 10
 Reference Elevation (ft NAVD88) =
 Site = Milburn Unit

Agency = DFG
 Measurements:
 Type = Datalogger
 Interval = Hourly
 Date Range = 7/3/2008 - 12/28/2011

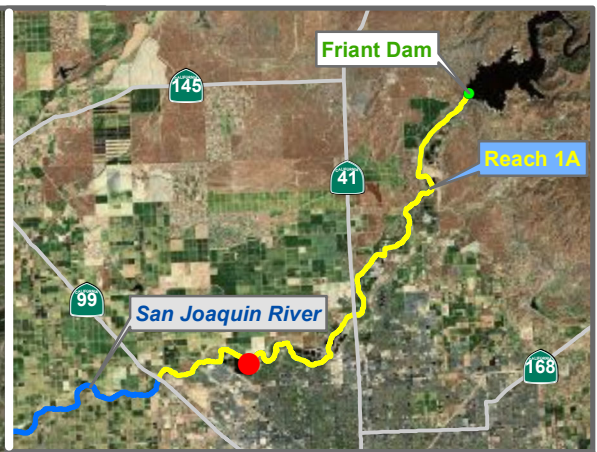
Description:
 Cabled underneath culvert on RL.

Ground Surface Elevation (ft) =
 Monitoring Depth (ft) = 1 ft above gs



 Temperature

Monitoring Location SJRMU

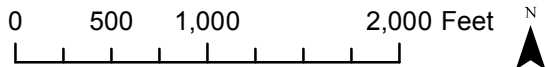


Reach = 1A
 River Mile = 247.9
 Fresno County
 Channel Bank

X = -119.8680 Y = 36.8500 Status = Lost
 (Horizontal Datum is NAD83)
 Distance From River (ft) = 366
 Reference Elevation (ft NAVD88) =
 Site = Milburn upstream

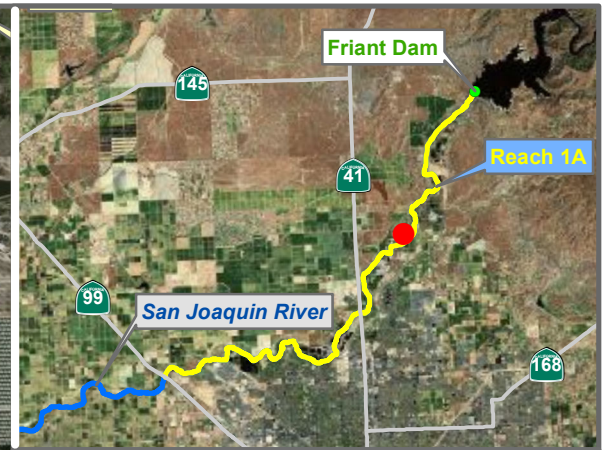
Agency = DFG
 Measurements:
 Type = Datalogger
 Interval = Hourly
 Timeseries unavailable

Description:
 Milburn Unit gravel pit. Cabled to rock near entrance
 on RR. One logger on vert. stringer. Data lost during
 IFFP 2010
 Ground Surface Elevation (ft) =
 Monitoring Depth (ft) = 1 ft above gs



 Temperature

Monitoring Location SJRMUU



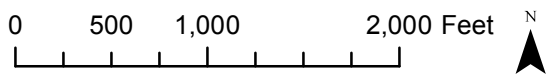
Reach = 1A
 River Mile = 259.5
 Fresno County
 Right Bank

X = -119.7593 Y = 36.9198 Status = Existing
 (Horizontal Datum is NAD83)
 Distance From River (ft)= 1376
 Reference Elevation (ft NAVD88) =
 Site = Riverbend

Agency = DFG
 Measurements:
 Type = Datalogger
 Interval = Hourly
 Date Range = 8/13/2008 - 12/28/2011

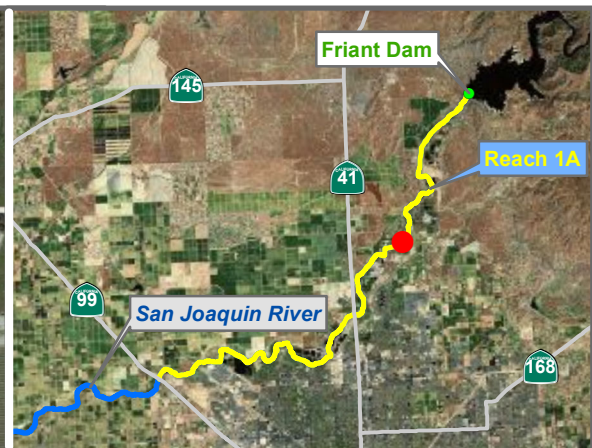
Description:
 Side channel at Riverbend Golf Course. Cabled to tree on RR.

Ground Surface Elevation (ft) =
 Monitoring Depth (ft) = 1 ft above gs



Monitoring Location SJRRB

* = assumed value
 bgs = below ground surface
 NR = not recorded



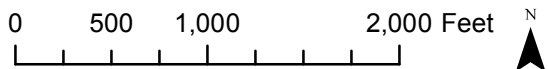
Reach = 1A
 River Mile = 259.5
 Fresno County
 Right Bank

X = -119.7558 Y = 36.9170 Status = Existing
 (Horizontal Datum is NAD83)
 Distance From River (ft) = 12
 Reference Elevation (ft NAVD88) =
 Site = Rank Island

Agency = DFG
 Measurements:
 Type = Datalogger
 Interval = Hourly
 Date Range = 8/13/2008 - 7/28/2011

Description:
 Access from Riverbend Golf Course. Cabled to tree on RR.

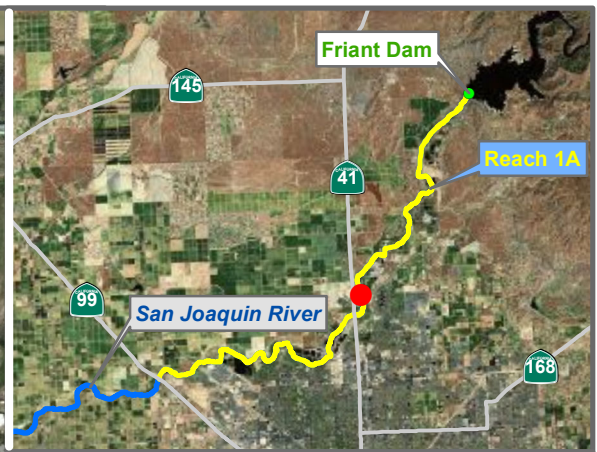
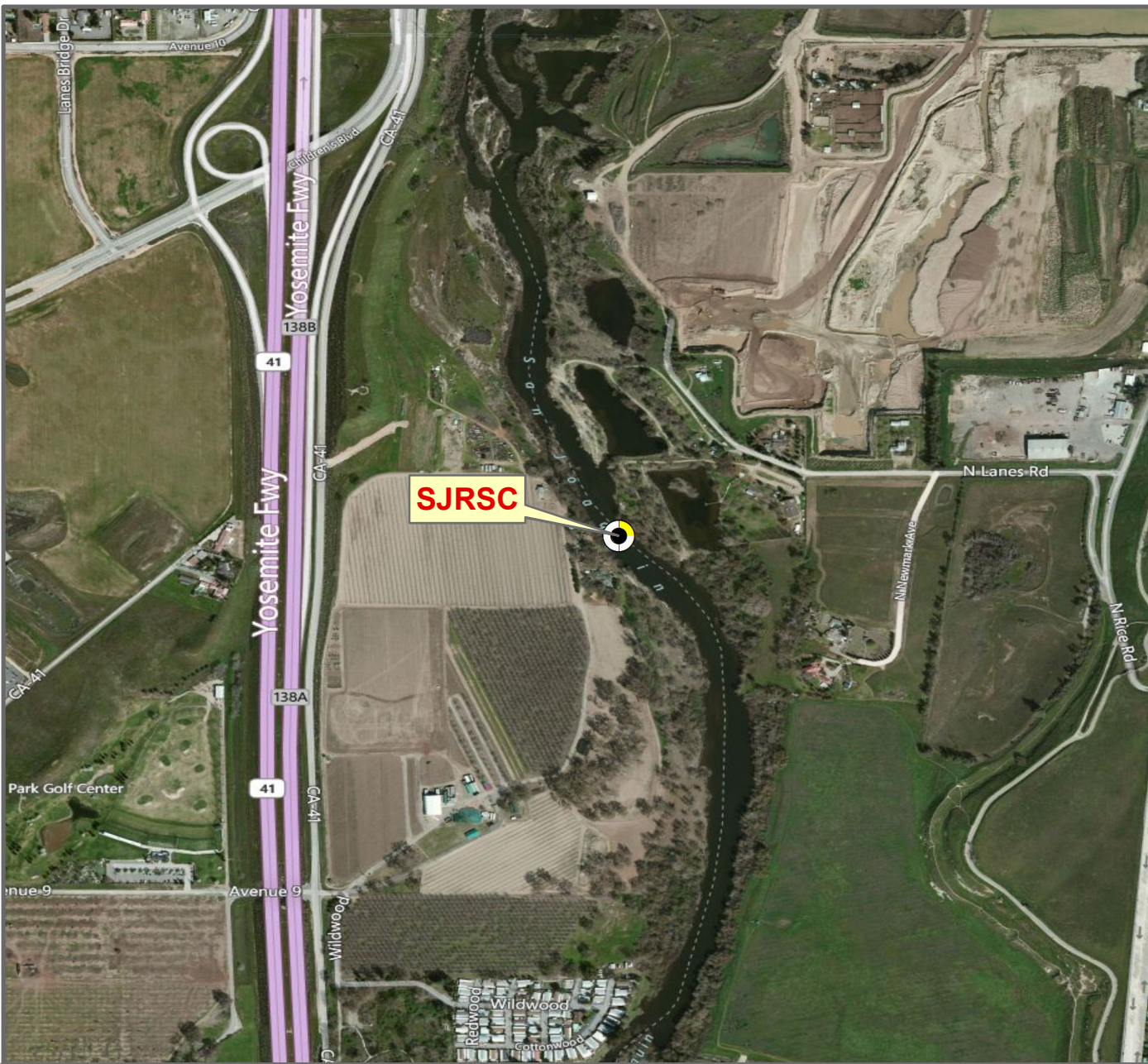
Ground Surface Elevation (ft) =
 Monitoring Depth (ft) = 1 ft above gs



Temperature

Monitoring Location SJRRI

* = assumed value
 bgs = below ground surface
 NR = not recorded



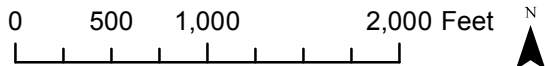
Reach = 1A
 River Mile = 256.4
 Fresno County
 Left Bank

X = -119.7871 Y = 36.8871 Status = Lost
 (Horizontal Datum is NAD83)
 Distance From River (ft) = 11
 Reference Elevation (ft NAVD88) =
 Site = Sportsmen's Club

Agency = DFG
 Measurements:
 Type = Datalogger
 Interval = Hourly
 Date Range = 2/26/2009 - 12/20/2011

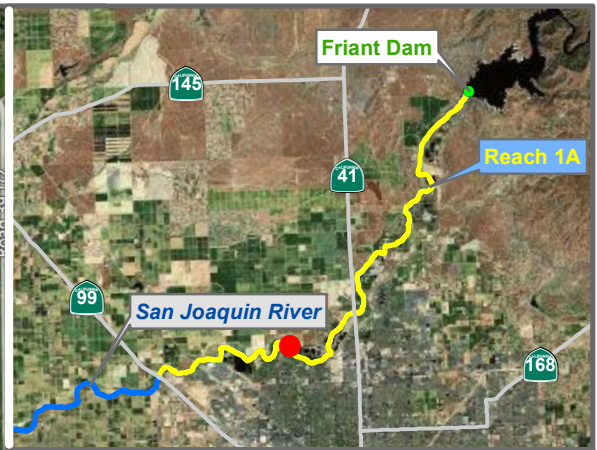
Description:
 Upstream of boatlaunch. Cabled to tree on RL. Data
 lost during IFP.

Ground Surface Elevation (ft) =
 Monitoring Depth (ft) = 1 ft above gs



Temperature

Monitoring Location SJRSC

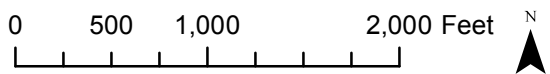


Reach = 1A
 River Mile = 249.9
 Fresno County
 Right Bank
 X = -119.8387 Y = 36.8583 Status = Existing
 (Horizontal Datum is NAD83)
 Distance From River (ft) = 31
 Reference Elevation (ft NAVD88) =
 Site = Scout Island 1

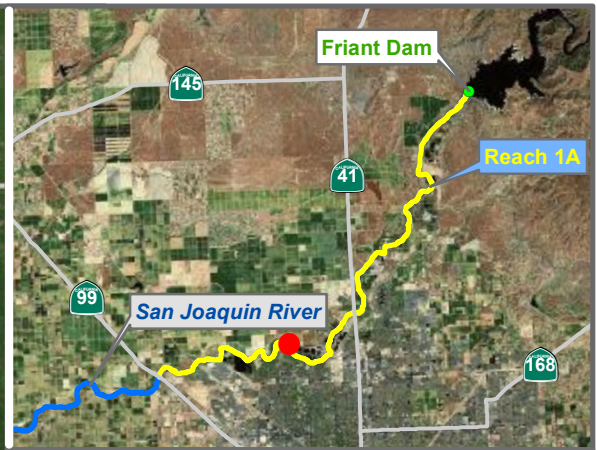
Agency = DFG
 Measurements:
 Type = Datalogger
 Interval = Hourly
 Date Range = 7/20/2010 - 1/17/2012

Description:
 Cabled to tree.

Ground Surface Elevation (ft) =
 Monitoring Depth (ft) = 1 ft above gs



Monitoring Location SJRSC11



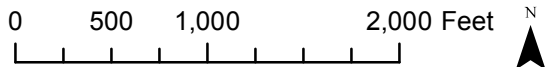
Reach = 1A
 River Mile = 249.9
 Madera County
 Right Bank

X = -119.8392 Y = 36.8595 Status = Existing
 (Horizontal Datum is NAD83)
 Distance From River (ft) = 51
 Reference Elevation (ft NAVD88) =
 Site = Scout Island 2

Agency = DFG
 Measurements:
 Type = Datalogger
 Interval = Hourly
 Date Range = 7/20/2010 - 2/3/2011

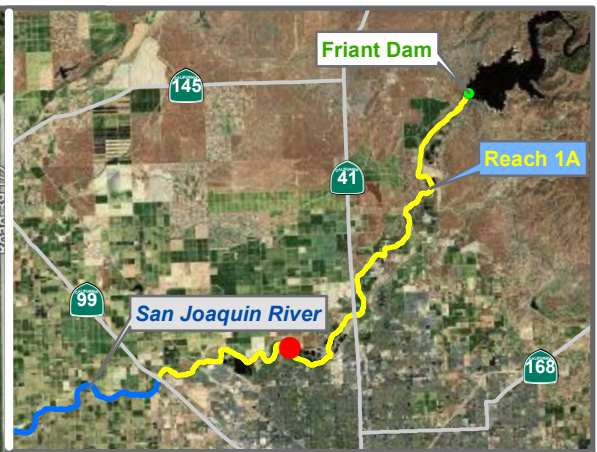
Description:
 Cabled to root wad.

Ground Surface Elevation (ft) =
 Monitoring Depth (ft) = 1 ft above gs



Temperature

Monitoring Location SJRSCI2



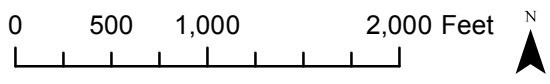
Reach = 1A
 River Mile = 250.8
 Fresno County
 Channel Bank

X = -119.8387 Y = 36.8582 Status = Lost
 (Horizontal Datum is NAD83)
 Distance From River (ft) = 48
 Reference Elevation (ft NAVD88) =
 Site = Sycamore Island

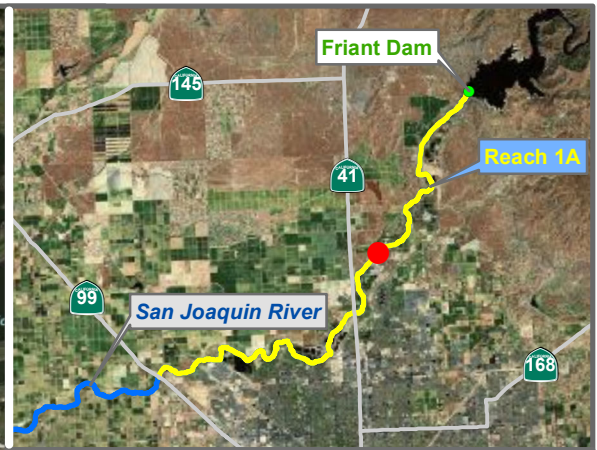
Agency = DFG
 Measurements:
 Type = Datalogger
 Interval = Hourly
 Timeseries unavailable

Description:
 Downstream of Palm and Nees access. Data lost during IFP 2010.

Ground Surface Elevation (ft) =
 Monitoring Depth (ft) = 1 ft above gs



Monitoring Location SJRSI



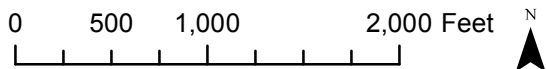
Reach = 1A
 River Mile = 258.0
 Fresno County
 Channel Bank

X = -119.7736 Y = 36.9099 Status = Existing
 (Horizontal Datum is NAD83)
 Distance From River (ft) = 43
 Reference Elevation (ft NAVD88) =
 Site = Holding Pool B

Agency = DFG
 Measurements:
 Type = Datalogger
 Interval = Hourly
 Date Range = 9/29/2009 - 12/14/2010

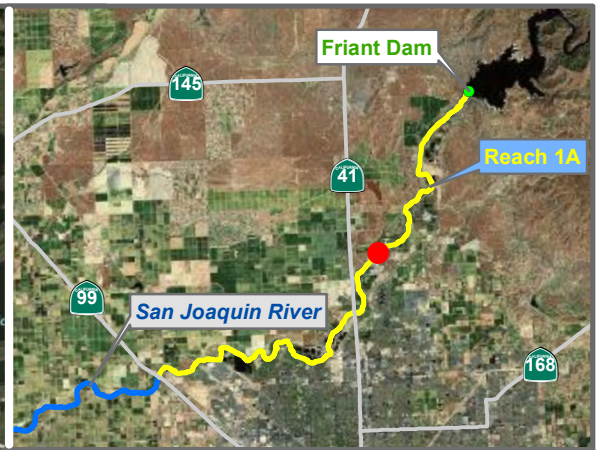
Description:
 Downstream of Volcan access. Cabled to tree on
 RR. Two loggers on vert. stringer (1top 2bottom)

Ground Surface Elevation (ft) =
 Monitoring Depth (ft) = 1ft below ws



Temperature

Monitoring Location SJRV1



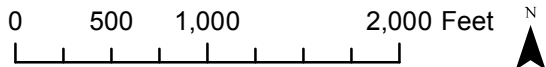
Reach = 1A
 River Mile = 258.0
 Fresno County
 Channel Bank

X = -119.7736 Y = 36.9099 Status = Existing
 (Horizontal Datum is NAD83)
 Distance From River (ft) = 43
 Reference Elevation (ft NAVD88) =
 Site = Holding Pool B

Agency = DFG
 Measurements:
 Type = Datalogger
 Interval = Hourly
 Date Range = 9/29/2009 - 12/20/2011

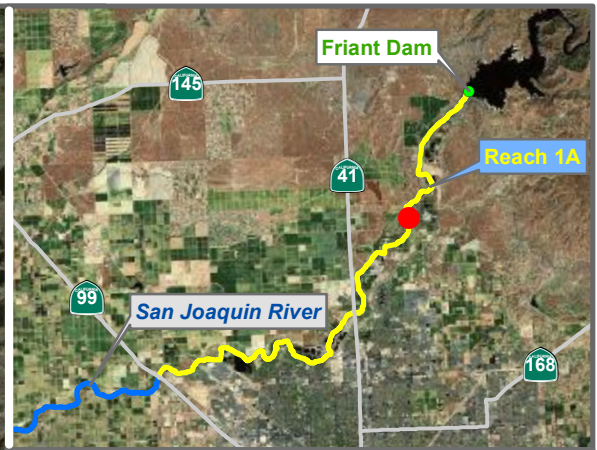
Description:
 Downstream of Volcan access. Cabled to tree on
 RR. Two loggers on vert. stringer (1top 2bottom)

Ground Surface Elevation (ft) =
 Monitoring Depth (ft) = 1 ft above gs



 Temperature

Monitoring Location SJRV2



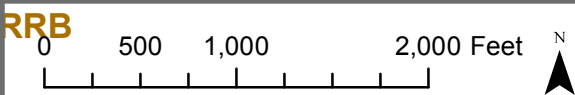
Reach = 1A
 River Mile = 260.9
 Madera County
 Left Bank

X = -119.7510 Y = 36.9290 Status = Existing
 (Horizontal Datum is NAD83)
 Distance From River (ft) = 68
 Reference Elevation (ft NAVD88) =
 Site = Willow Unit

Agency = DFG
 Measurements:
 Type = Datalogger
 Interval = Hourly
 Date Range = 2/27/2008 - 12/20/2011

Description:
 Access from Cemex Rock Quarry. Cabled to tree on RL.

Ground Surface Elevation (ft) =
 Monitoring Depth (ft) = 1 ft above gs

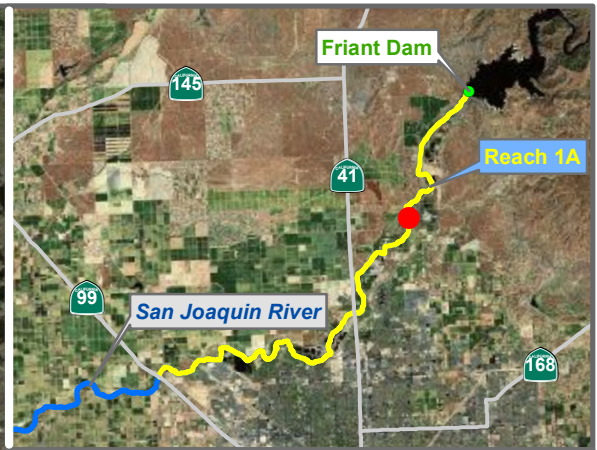


Monitoring Location SJRWU1



Temperature

* = assumed value
 bgs = below ground surface
 NR = not recorded



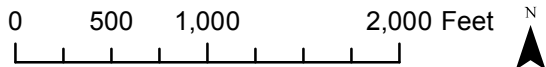
Reach = 1A
 River Mile = 260.9
 Madera County
 Left Bank

X = -119.7510 Y = 36.9290 Status = Existing
 (Horizontal Datum is NAD83)
 Distance From River (ft) = 68
 Reference Elevation (ft NAVD88) =
 Site = Willow Unit

Agency = DFG
 Measurements:
 Type = Datalogger
 Interval = Hourly
 Date Range = 9/30/2010 - 9/7/2011

Description:
 Access from Cemex Rock Quarry. Cabled to tree on RL.

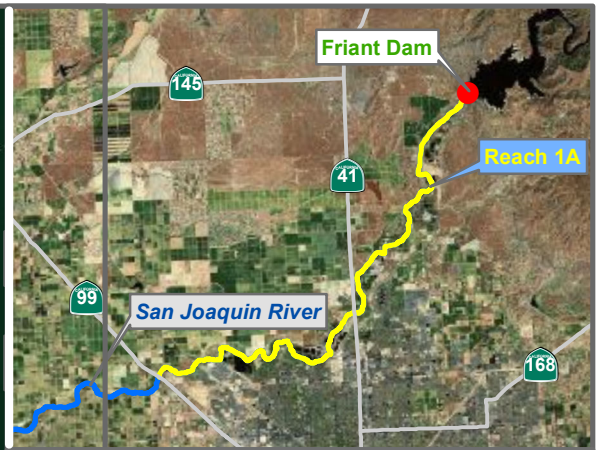
Ground Surface Elevation (ft) =
 Monitoring Depth (ft) =



Temperature

Monitoring Location SJRWU2

* = assumed value
 bgs = below ground surface
 NR = not recorded



Reach = 1A
 River Mile = 267.5
 Fresno County
 Channel Bank

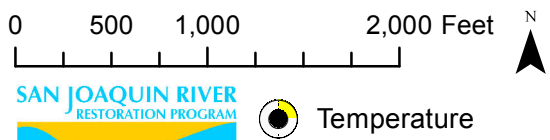
X = -119.7060 Y = 36.9993 Status = Existing
 (Horizontal Datum is NAD83)
 Distance From River (ft)= 175
 Reference Elevation (ft NAVD88) =
 Site = San Joaquin River outflows

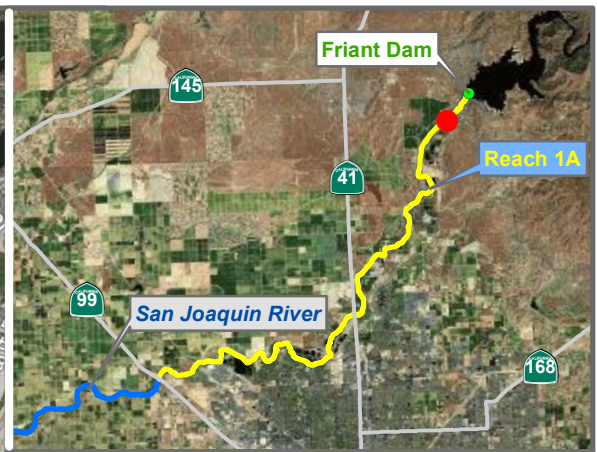
Agency = USBR
 Measurements:
 Type = Datalogger - Telemetered as FWQ
 Interval = Hourly
 Timeseries unavailable

Description:

Ground Surface Elevation (ft) =
 Monitoring Depth (ft) =

Monitoring Location TWTEMP





Reach = 1A
 River Mile = 266.2
 Madera County
 Channel Bank

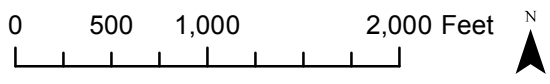
X = -119.7213 Y = 36.9848 Status = Existing
 (Horizontal Datum is NAD83)
 Distance From River (ft) = 361
 Reference Elevation (ft NAVD88) =
 Site = Worm Farm 1

Agency = USBR
 Measurements:
 Type = Datalogger
 Interval = Hourly
 Timeseries unavailable

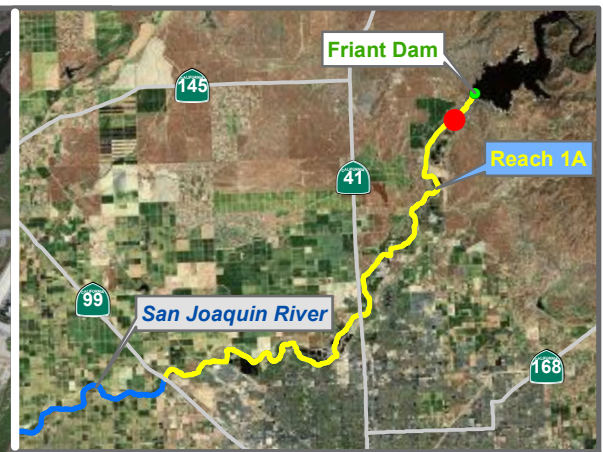
Description:
 Worm Farm Main Outflow

Ground Surface Elevation (ft) =
 Monitoring Depth (ft) =

Monitoring Location WF1



* = assumed value
 bgs = below ground surface
 NR = not recorded



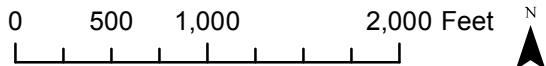
Reach = 1A
 River Mile = 266.2
 Madera County
 Channel Bank

X = -119.7203 Y = 36.9856 Status = Existing
 (Horizontal Datum is NAD83)
 Distance From River (ft) = 396
 Reference Elevation (ft NAVD88) =
 Site = Worm Farm 2

Agency = USBR
 Measurements:
 Type = Datalogger
 Interval = Hourly
 Timeseries unavailable

Description:
 Secondary output from worm farm

Ground Surface Elevation (ft) =
 Monitoring Depth (ft) =



 Temperature

Monitoring Location WF2