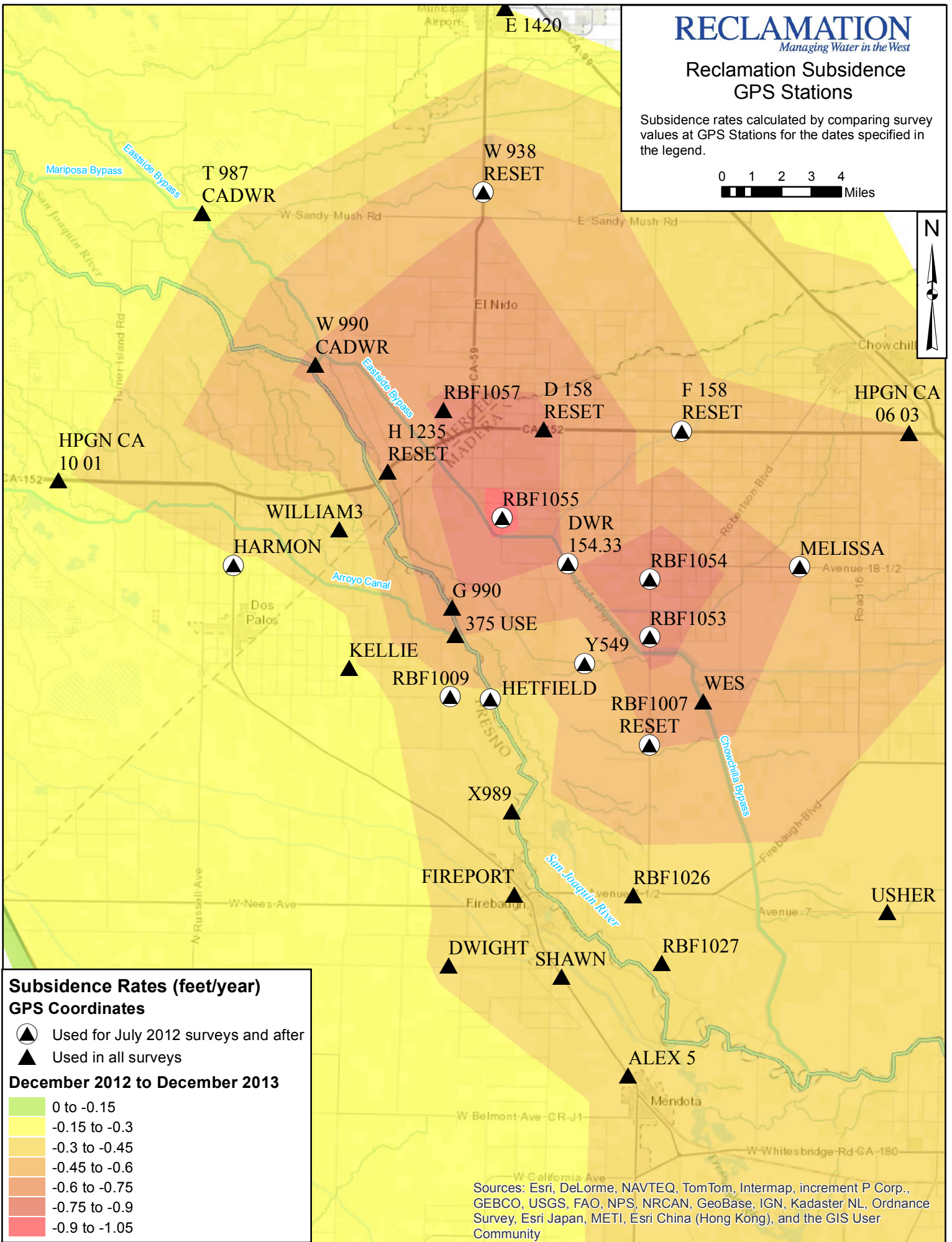
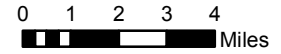


**Reclamation Subsidence  
GPS Stations**

Subsidence rates calculated by comparing survey values at GPS Stations for the dates specified in the legend.



**Subsidence Rates (feet/year)**

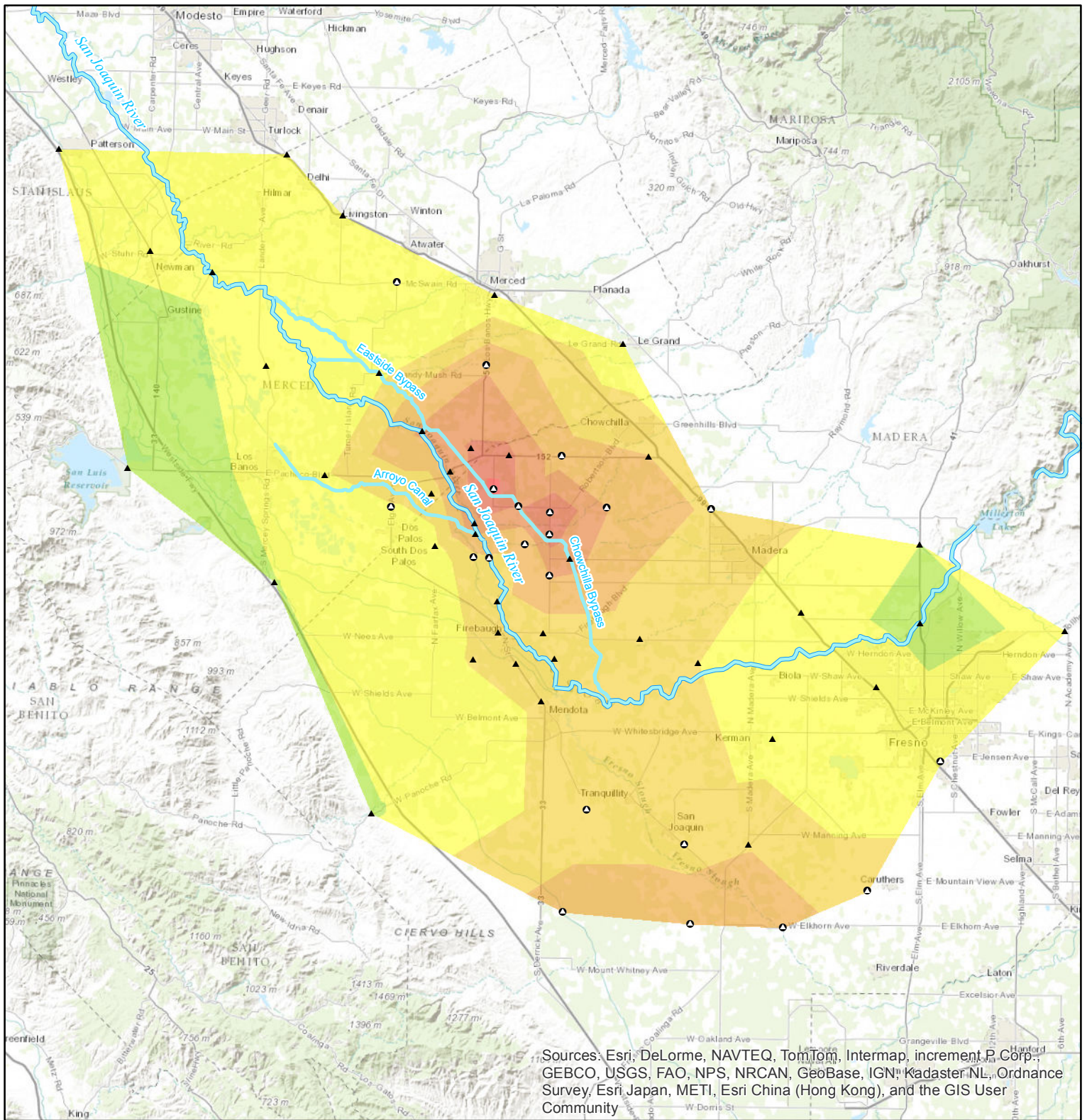
**GPS Coordinates**

- Used for July 2012 surveys and after
- Used in all surveys

**December 2012 to December 2013**

- 0 to -0.15
- 0.15 to -0.3
- 0.3 to -0.45
- 0.45 to -0.6
- 0.6 to -0.75
- 0.75 to -0.9
- 0.9 to -1.05

Sources: Esri, DeLorme, NAVTEQ, TomTom, Intermap, increment P Corp., GEBCO, USGS, FAO, NPS, NRCAN, GeoBase, IGN, Kadaster NL, Ordnance Survey, Esri Japan, METI, Esri China (Hong Kong), and the GIS User Community



Sources: Esri, DeLorme, NAVTEQ, TomTom, Intermap, increment P Corp., GEBCO, USGS, FAO, NPS, NRCAN, GeoBase, IGN, Kadaster NL, Ordnance Survey, Esri Japan, METI, Esri China (Hong Kong), and the GIS User Community

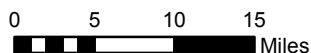
### Subsidence Rates (feet/year)

#### GPS Coordinates

- Used for July 2012 surveys and after
- ▲ Used in all surveys

#### December 2012 to December 2013

- 0 to -0.15
- 0.15 to -0.3
- 0.3 to -0.45
- 0.45 to -0.6
- 0.6 to -0.75
- 0.75 to -0.9
- 0.9 to -1.05



**RECLAMATION**  
Managing Water in the West

### Reclamation Subsidence GPS Stations

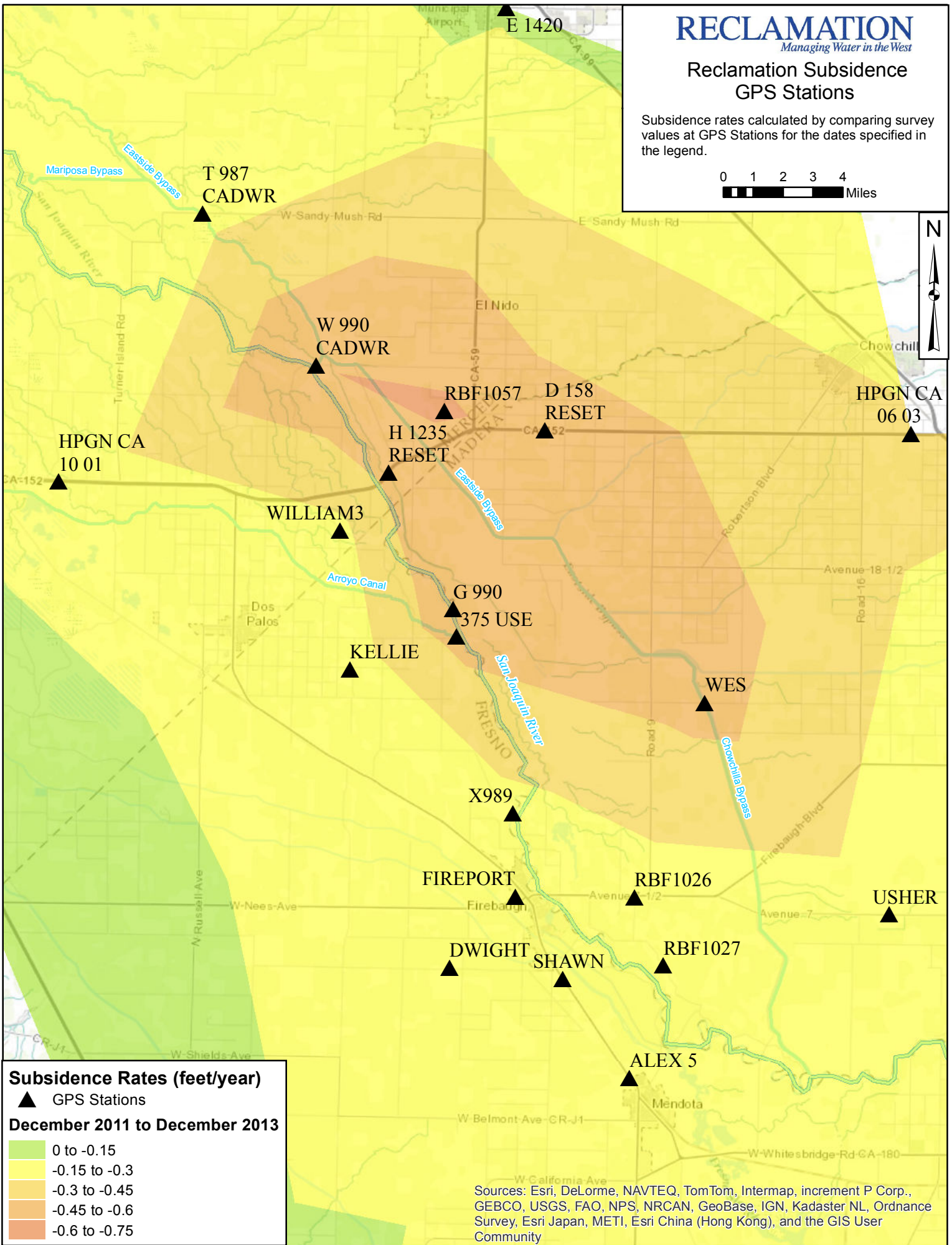
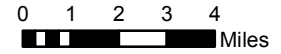
Subsidence rates calculated by comparing survey values at GPS Stations for the dates specified in the legend.

# RECLAMATION

*Managing Water in the West*

## Reclamation Subsidence GPS Stations

Subsidence rates calculated by comparing survey values at GPS Stations for the dates specified in the legend.



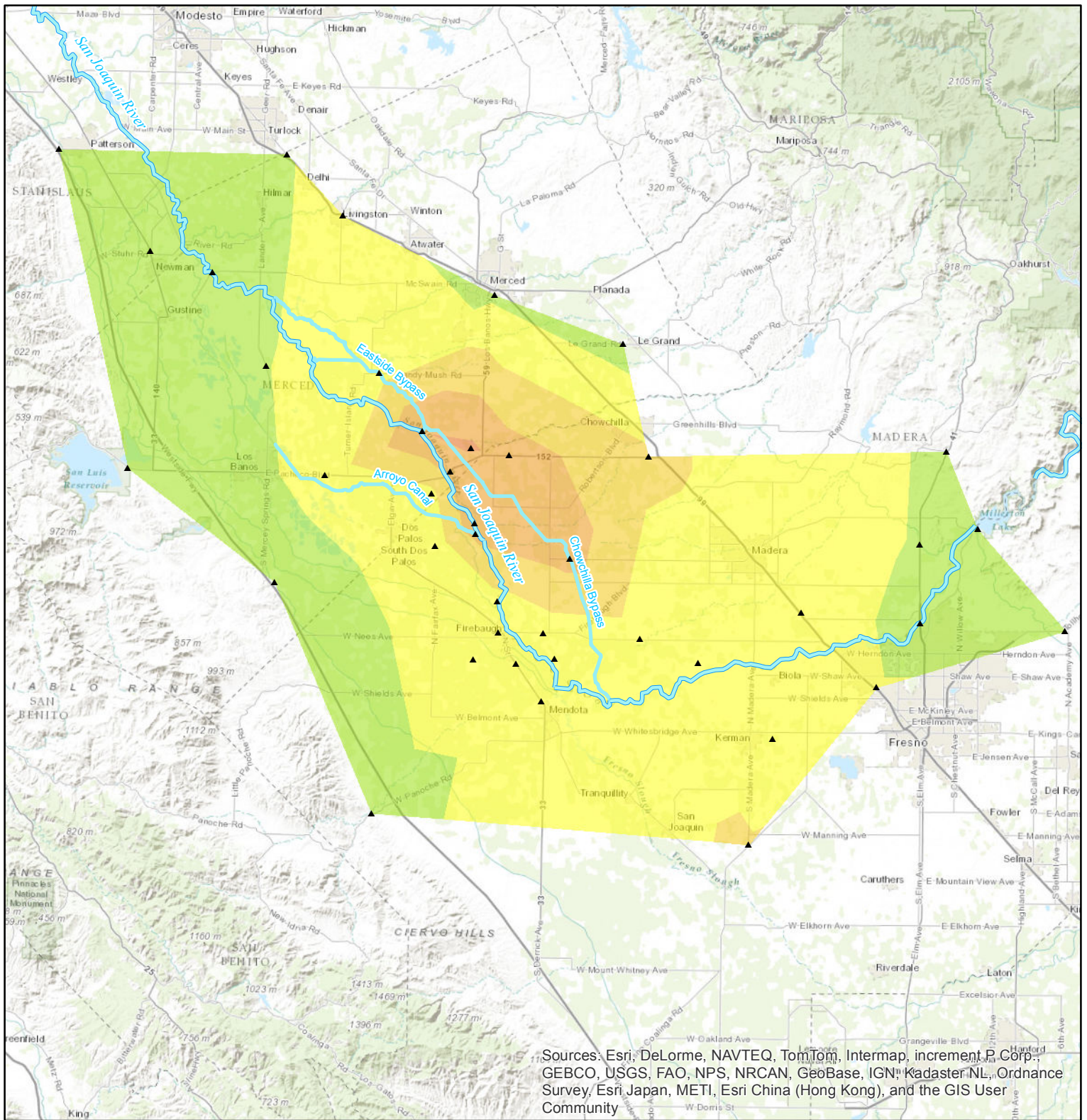
**Subsidence Rates (feet/year)**

▲ GPS Stations

**December 2011 to December 2013**

- 0 to -0.15
- 0.15 to -0.3
- 0.3 to -0.45
- 0.45 to -0.6
- 0.6 to -0.75

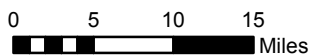
Sources: Esri, DeLorme, NAVTEQ, TomTom, Intermap, increment P Corp., GEBCO, USGS, FAO, NPS, NRCAN, GeoBase, IGN, Kadaster NL, Ordnance Survey, Esri Japan, METI, Esri China (Hong Kong), and the GIS User Community



Sources: Esri, DeLorme, NAVTEQ, TomTom, Intermap, increment P Corp., GEBCO, USGS, FAO, NPS, NRCAN, GeoBase, IGN, Kadaster NL, Ordnance Survey, Esri Japan, METI, Esri China (Hong Kong), and the GIS User Community

**Subsidence Rates (feet/year)**  
**GPS Coordinates**  
 ▲ GPS Stations  
**December 2011 to December 2013**

- 0 to -0.15
- 0.15 to -0.3
- 0.3 to -0.45
- 0.45 to -0.6
- 0.6 to -0.75



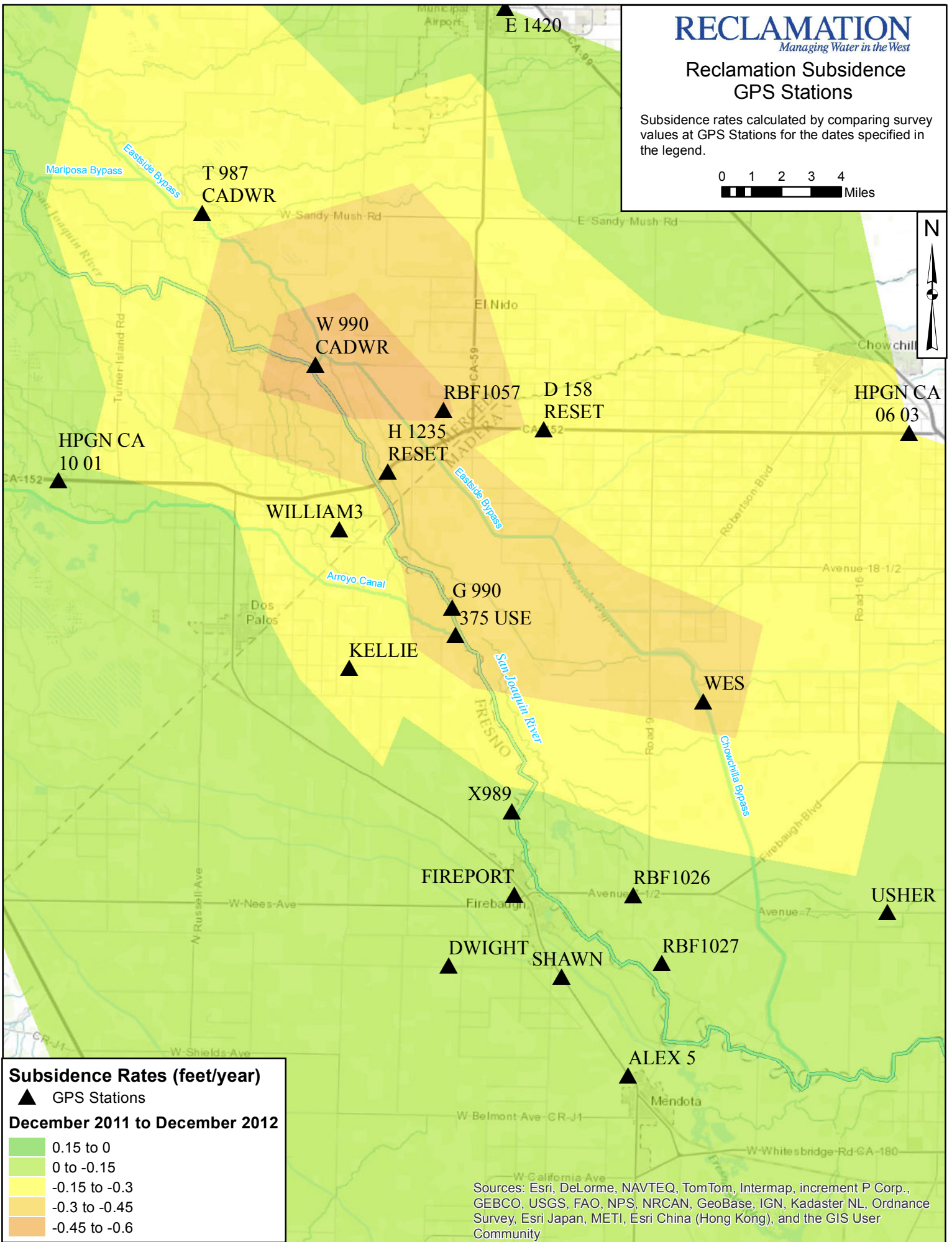
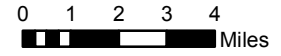
**RECLAMATION**  
*Managing Water in the West*

**Reclamation Subsidence  
 GPS Stations**

Subsidence rates calculated by comparing survey values at GPS Stations for the dates specified in the legend.

**Reclamation Subsidence  
GPS Stations**

Subsidence rates calculated by comparing survey values at GPS Stations for the dates specified in the legend.



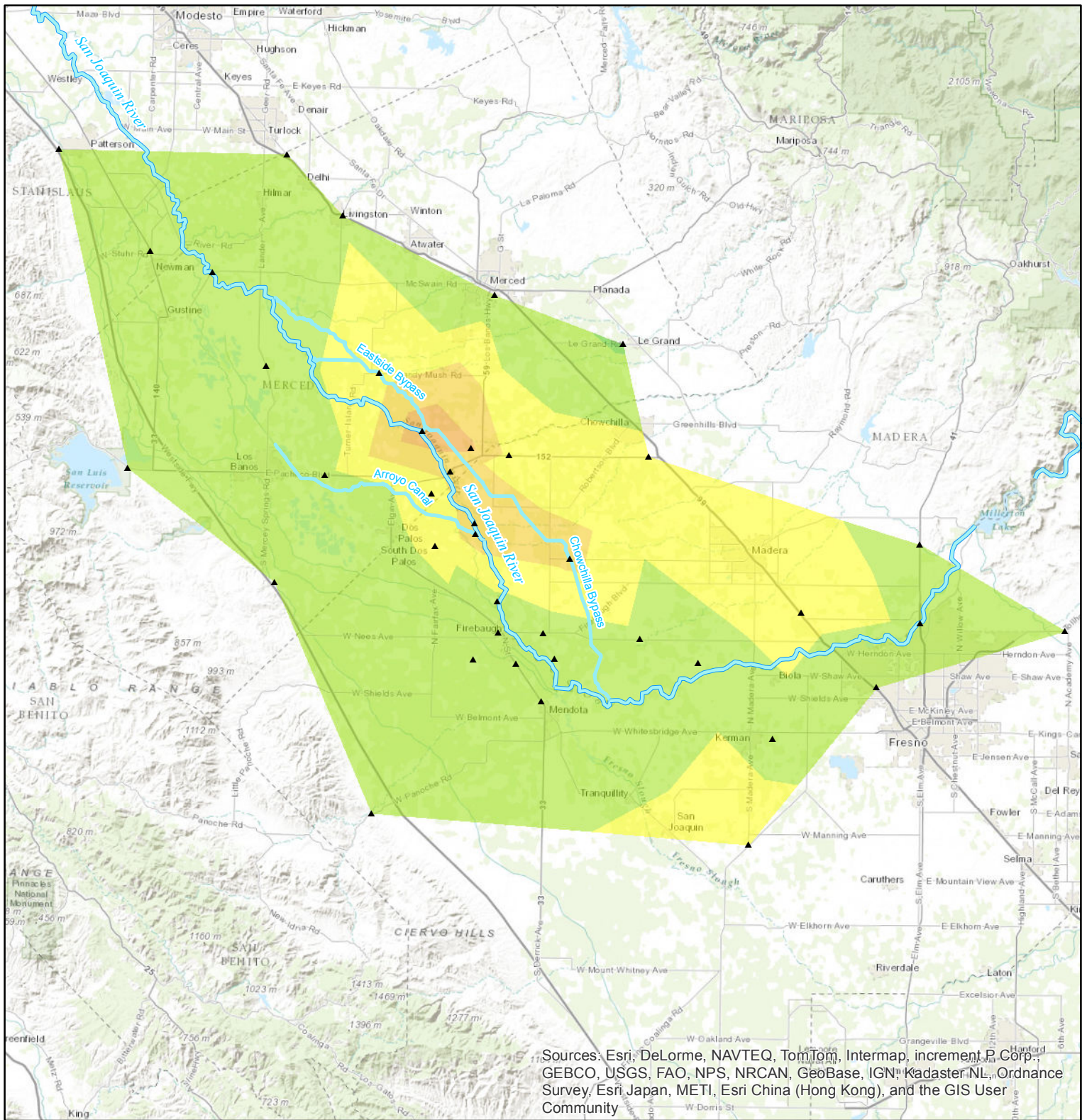
**Subsidence Rates (feet/year)**

▲ GPS Stations

**December 2011 to December 2012**

- 0.15 to 0
- 0 to -0.15
- 0.15 to -0.3
- 0.3 to -0.45
- 0.45 to -0.6

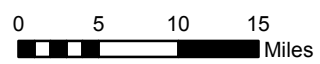
Sources: Esri, DeLorme, NAVTEQ, TomTom, Intermap, increment P Corp., GEBCO, USGS, FAO, NPS, NRCAN, GeoBase, IGN, Kadaster NL, Ordnance Survey, Esri Japan, METI, Esri China (Hong Kong), and the GIS User Community



Sources: Esri, DeLorme, NAVTEQ, TomTom, Intermap, increment P Corp., GEBCO, USGS, FAO, NPS, NRCAN, GeoBase, IGN, Kadaster NL, Ordnance Survey, Esri Japan, METI, Esri China (Hong Kong), and the GIS User Community

**Subsidence Rates (feet/year)**  
**GPS Coordinates**  
 ▲ GPS Stations  
**December 2011 to December 2012**

- 0.15 to 0
- 0 to -0.15
- 0.15 to -0.3
- 0.3 to -0.45
- 0.45 to -0.6



**RECLAMATION**  
*Managing Water in the West*

**Reclamation Subsidence  
 GPS Stations**

Subsidence rates calculated by comparing survey values at GPS Stations for the dates specified in the legend.