

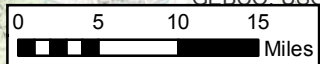
**Subsidence Rates (feet/year)**  
**December 2012 to July 2013**

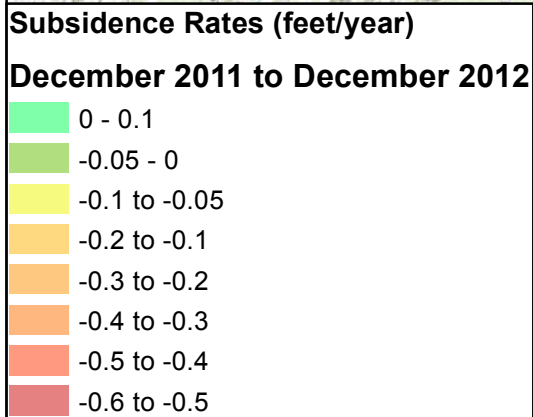
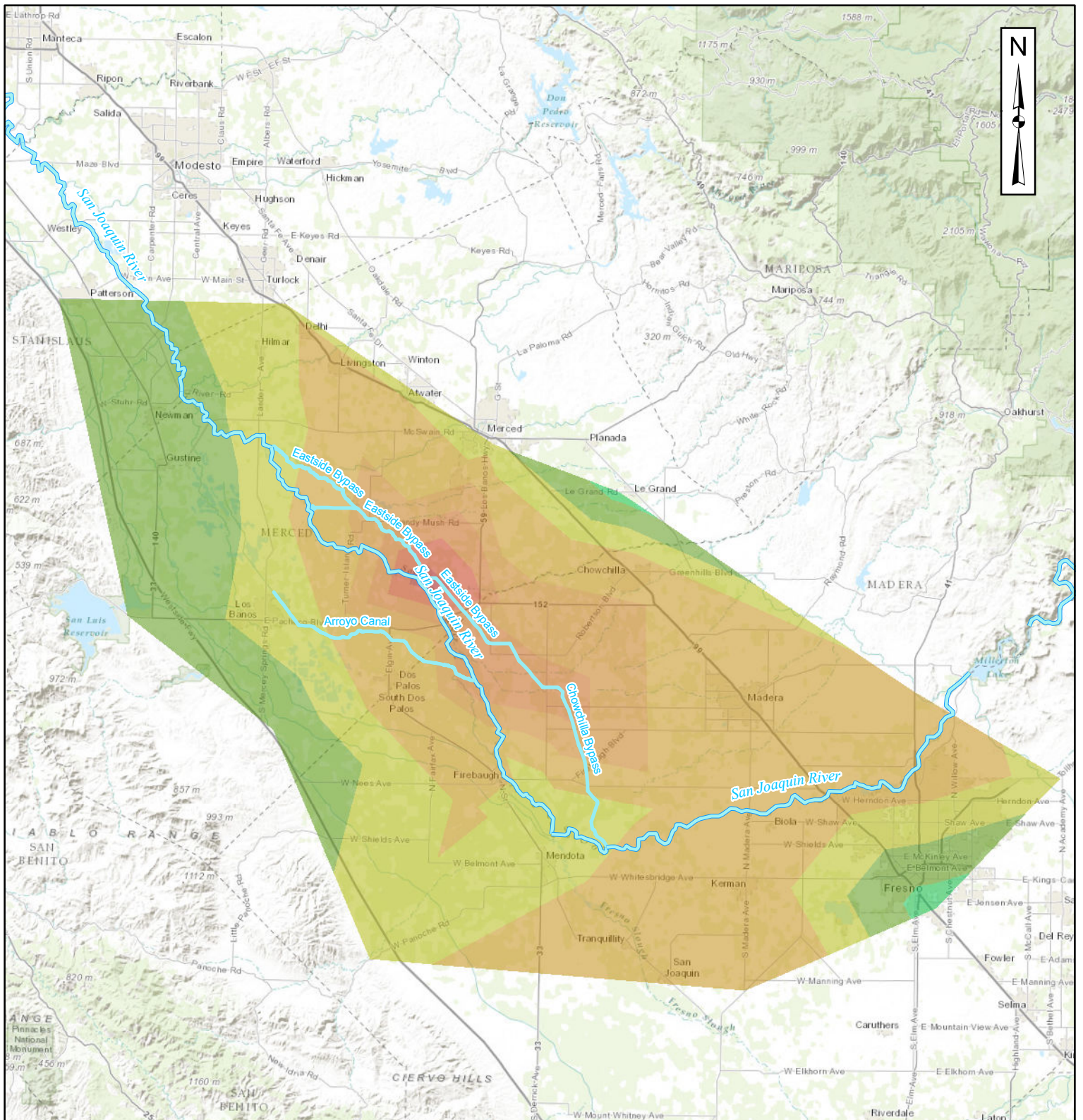
- 0.2 - 0.4
- 0.1 - 0.2
- 0 - 0.1
- 0.05 - 0
- 0.1 to -0.05
- 0.2 to -0.1
- 0.3 to -0.2
- 0.4 to -0.3
- 0.5 to -0.4
- 0.6 to -0.5
- 0.7 to -0.6
- 0.8 to -0.7
- 0.9 to -0.8

**RECLAMATION**  
*Managing Water in the West*  
**Reclamation Subsidence**  
**GPS Stations**

Subsidence rates calculated by comparing July 2013 survey values at GPS Stations with December 2012 survey values.

Sources: Esri, DeLorme, USGS, F...



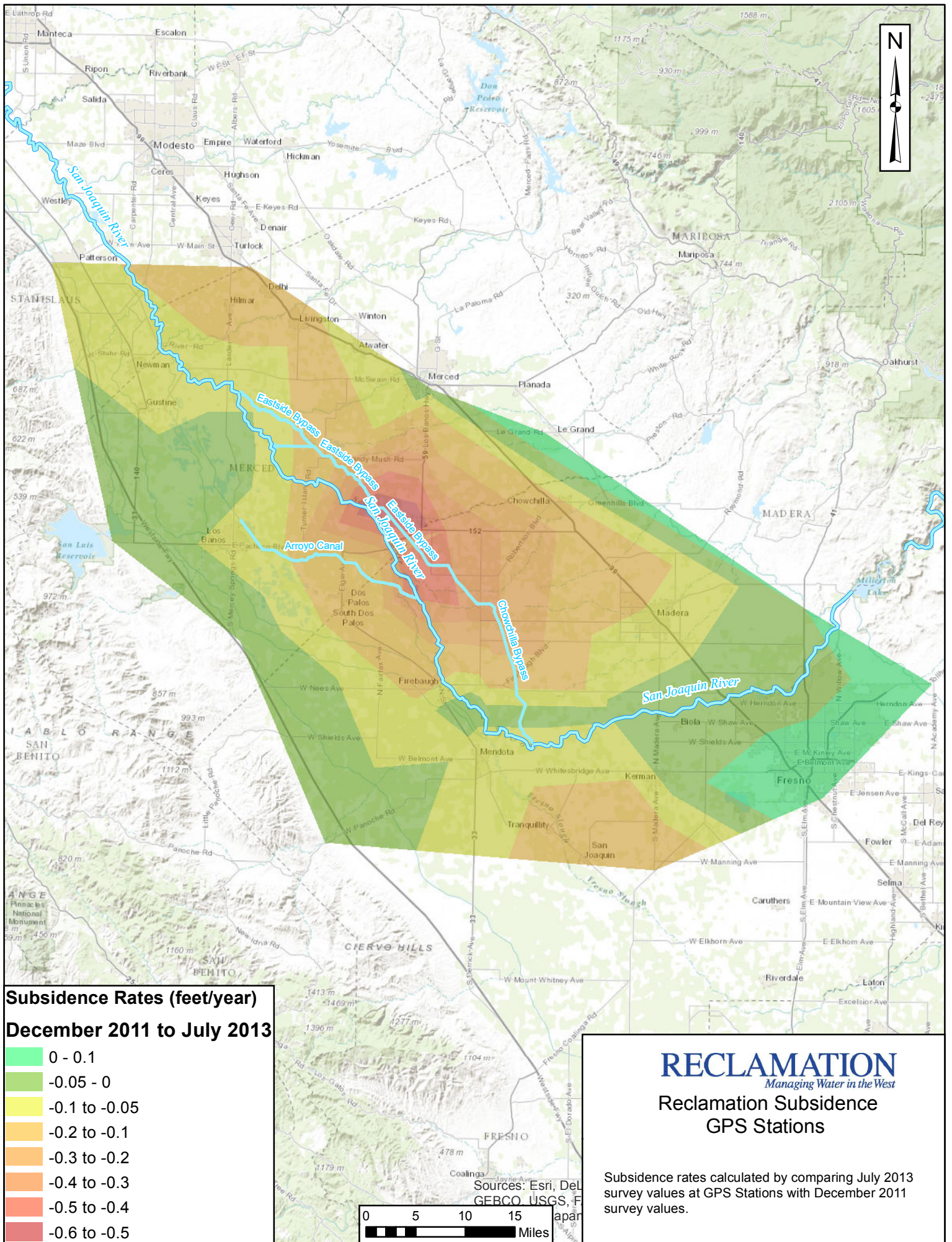


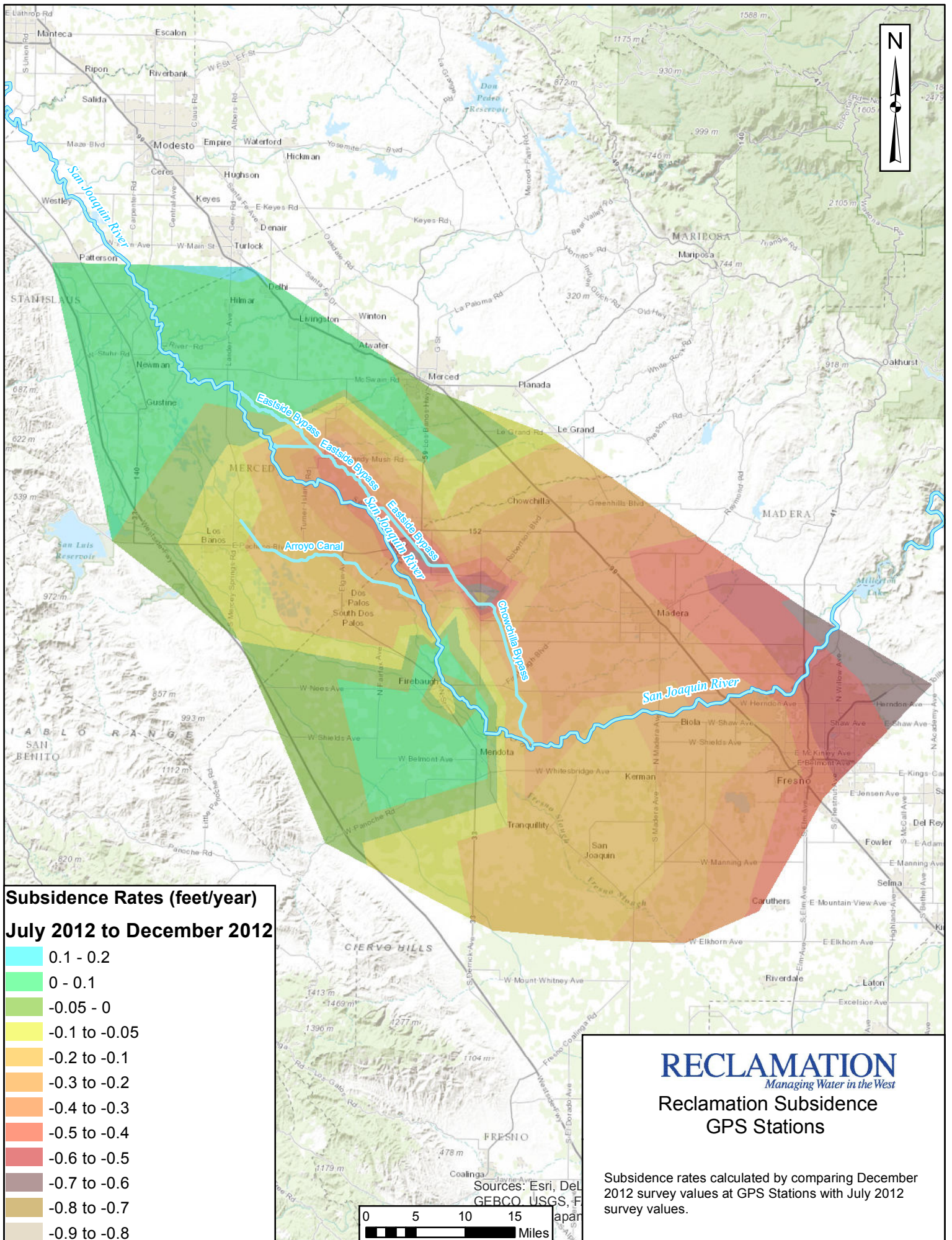
**RECLAMATION**  
*Managing Water in the West*

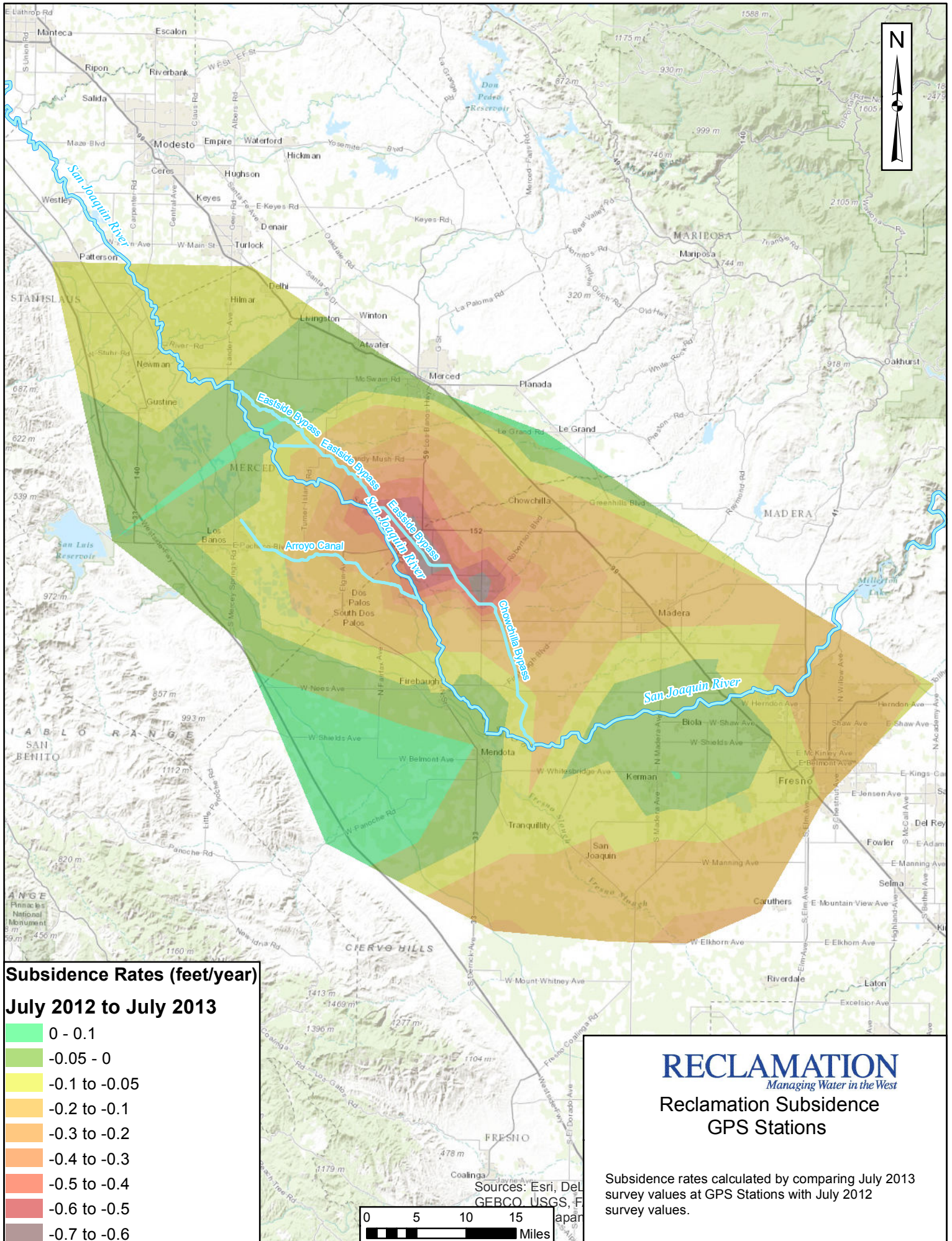
**Reclamation Subsidence  
 GPS Stations**

Subsidence rates calculated by comparing December 2012 survey values at GPS Stations with December 2011 survey values.









**Subsidence Rates (feet/year)**  
**July 2012 to July 2013**

- 0 - 0.1
- 0.05 - 0
- 0.1 to -0.05
- 0.2 to -0.1
- 0.3 to -0.2
- 0.4 to -0.3
- 0.5 to -0.4
- 0.6 to -0.5
- 0.7 to -0.6

**RECLAMATION**  
*Managing Water in the West*

**Reclamation Subsidence  
 GPS Stations**

Subsidence rates calculated by comparing July 2013 survey values at GPS Stations with July 2012 survey values.

