

# Central Valley Flood System Conservation Strategy

## *Medium & Fine-scale Riparian Maps*

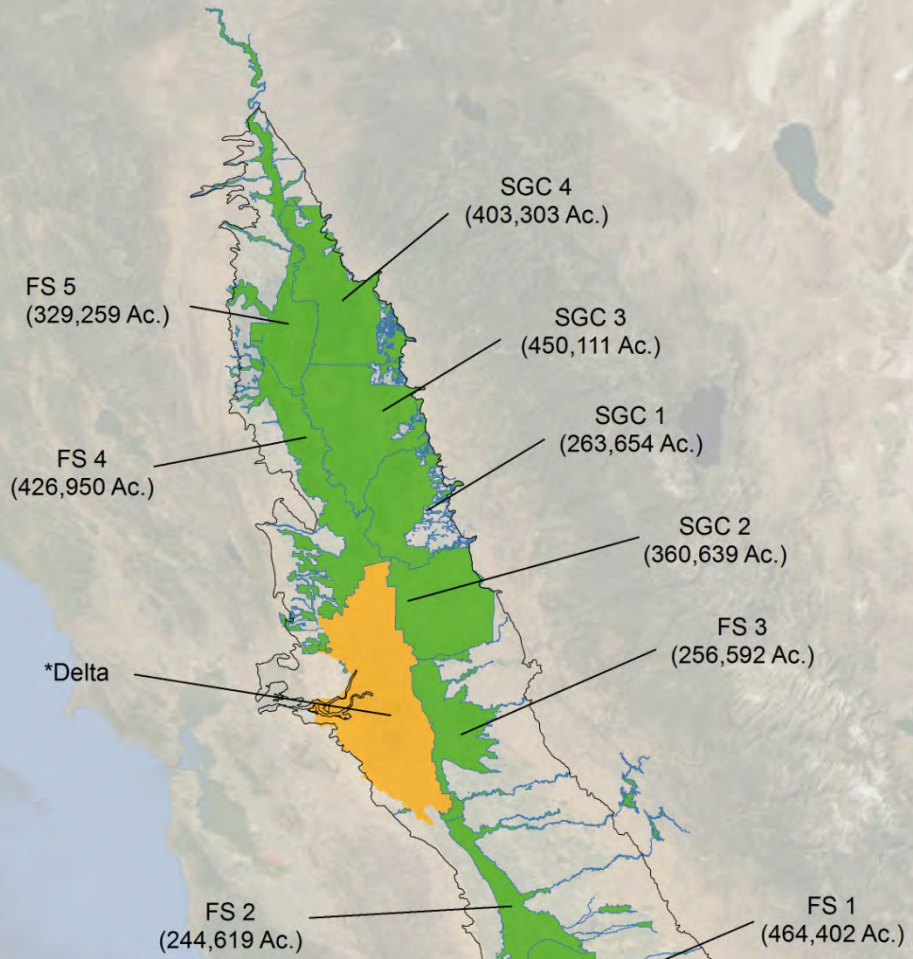
*San Joaquin River Restoration Program  
July 2013*

# *Vegetation Mapping for the CVFPP and Conservation Strategy*

- *Medium-scale map (2011):*
  - First seamless, medium-resolution, updated map available of Sacramento & San Joaquin Rivers and tributaries
- *Fine-scale map (fall 2013):*
  - Fine-scale vegetation classification
  - Detailed data collection and vegetation attributes

# Study Area

- Study area modules
- Delta vegetation

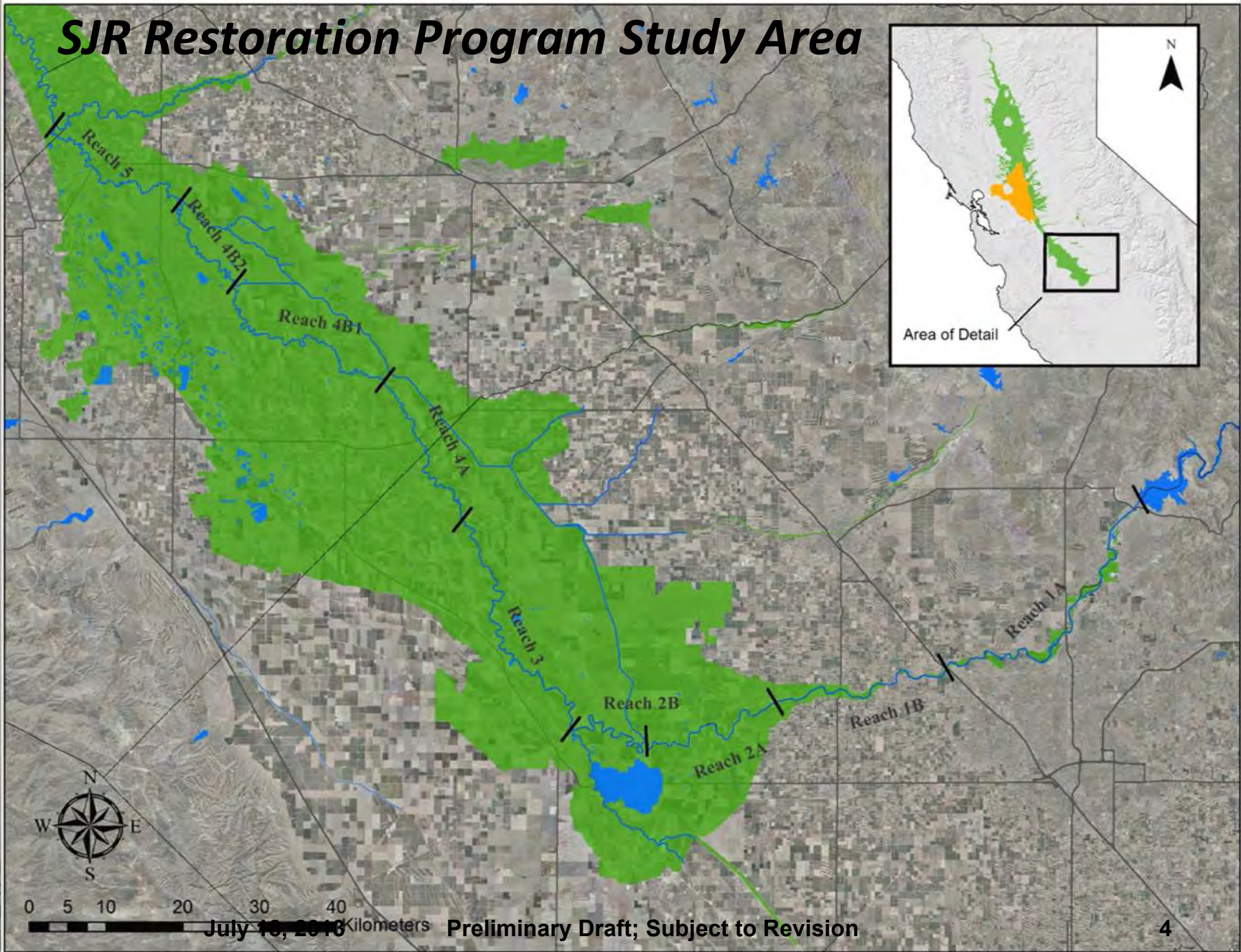
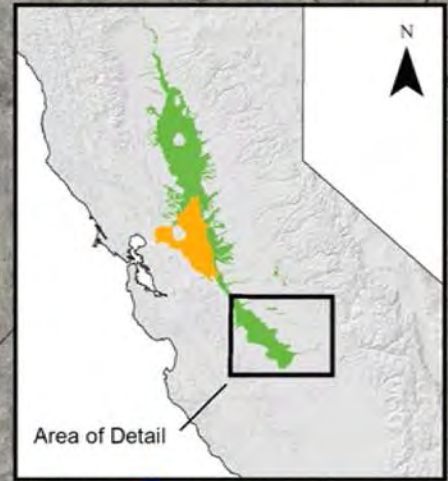


Great Valley Ecoregion  
Total Area (3,199,529 Ac.)  
Sacramento-San Joaquin Delta  
\*Delta previously mapped by Department of Fish and Game

July 18, 2013

Preliminary Draft, Subject to Revision

# SJR Restoration Program Study Area

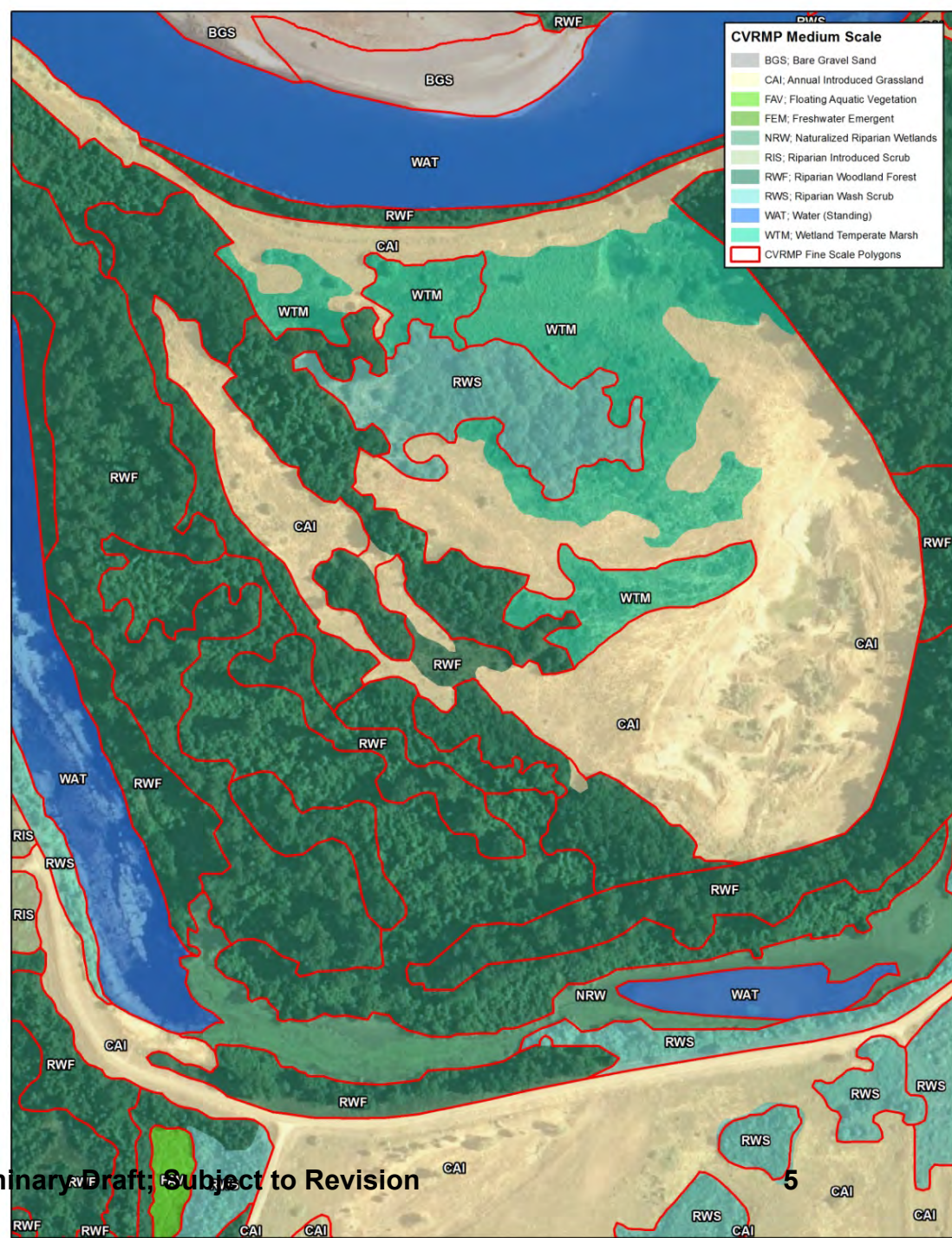


July 16, 2018

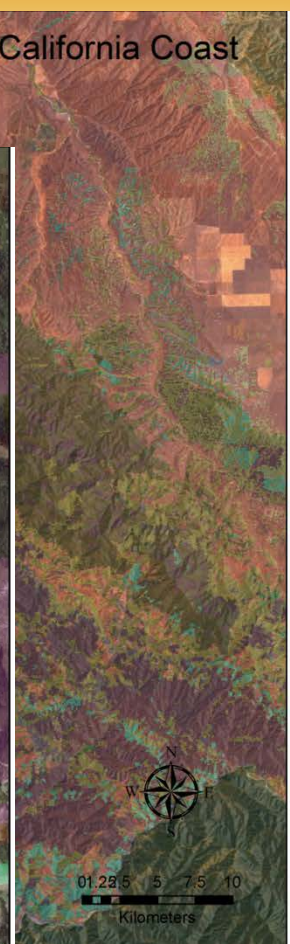
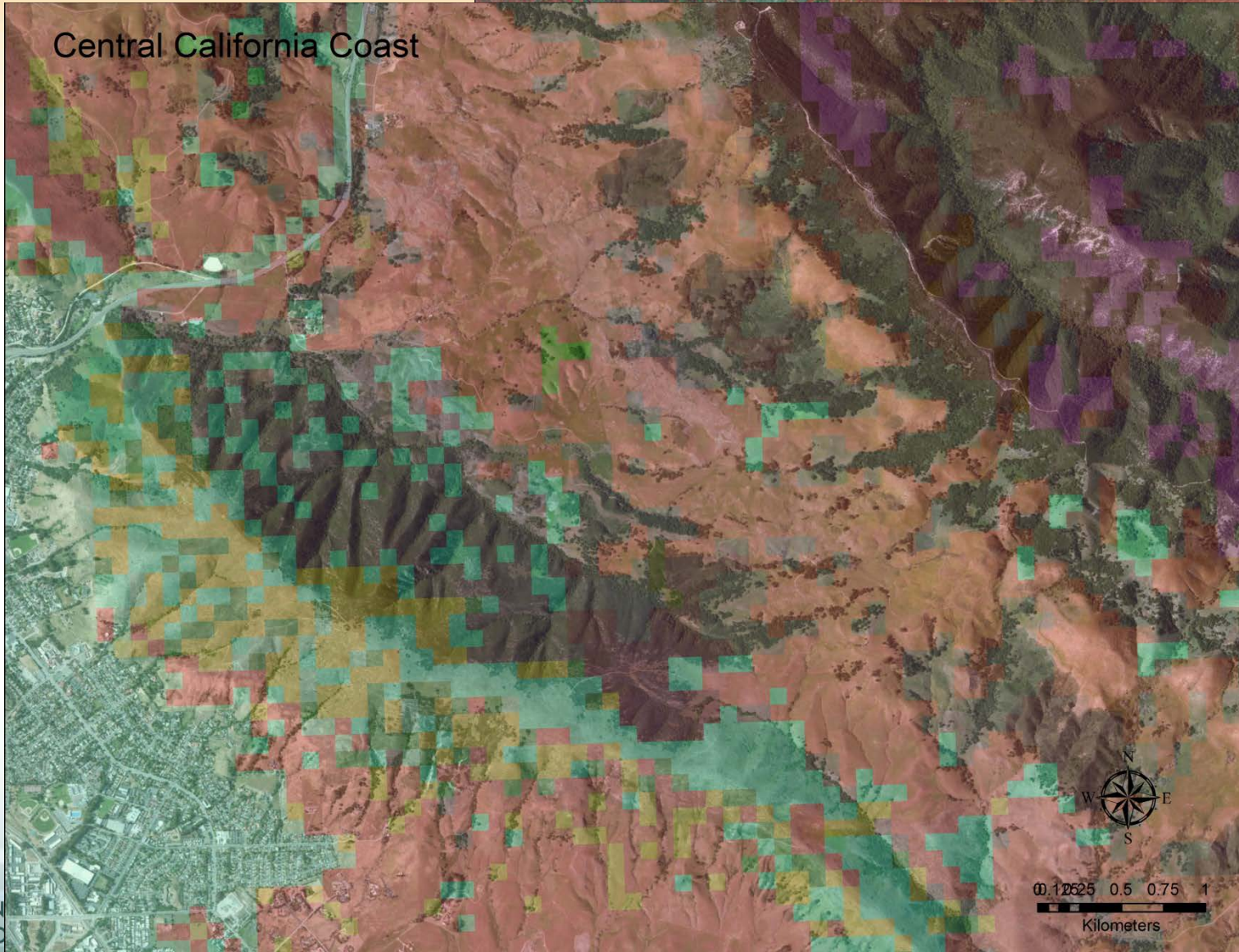
Preliminary Draft; Subject to Revision

# Medium-scale Map:

- Resolution: 1 to 2 acre MMU for natural vegetation
- Classification – Group level: “Riparian Woodland Forest”
- Classification: Based on NVCS
- Agriculture – Anderson Level II
- Residential, Urban – 10 acre map units
- May crosswalk to other map systems (WHR)

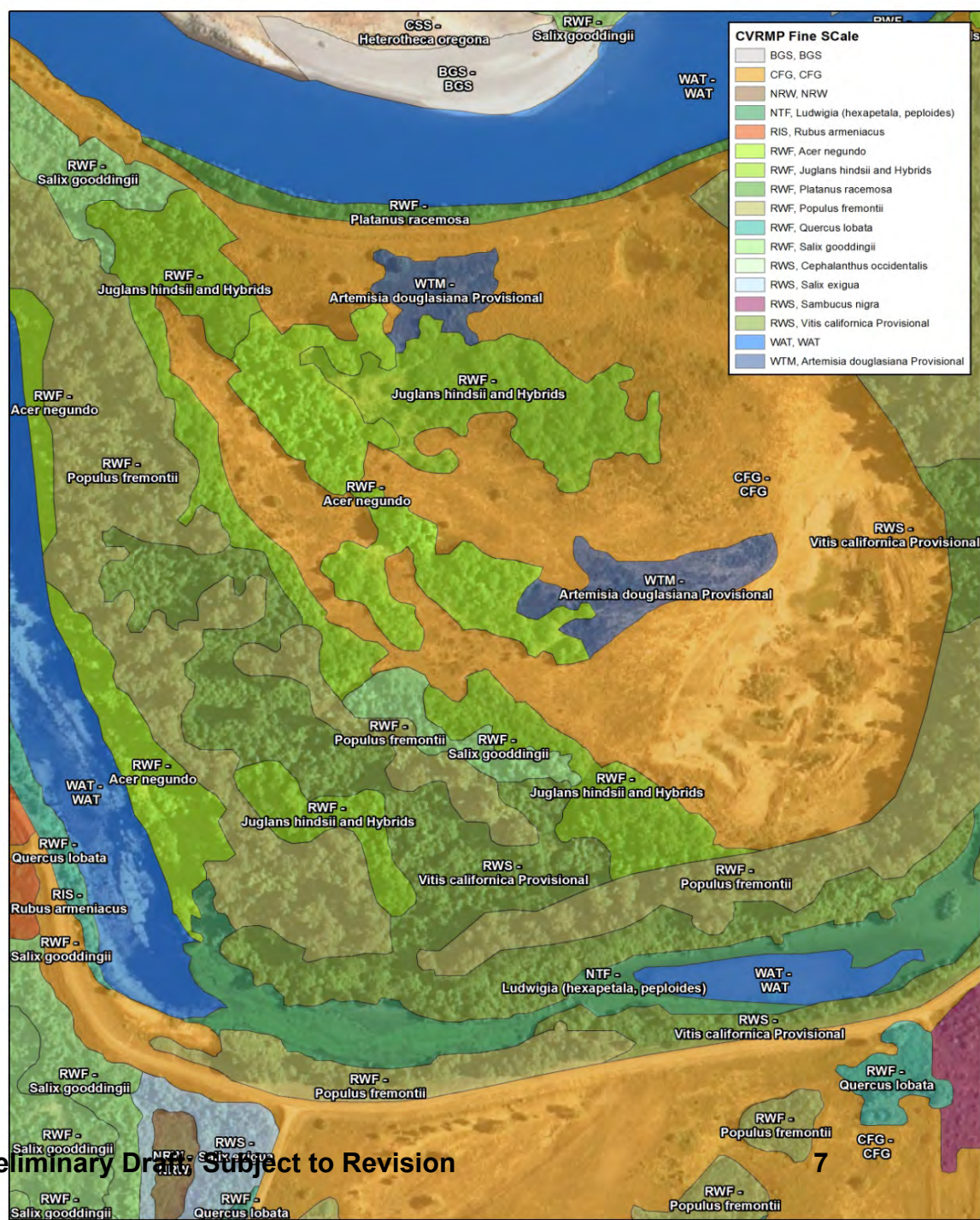


Central California Coast



# Fine-scale Map

- 1 - acre minimum map unit for wetlands and riparian
- Vegetation alliance level
- About 30 ft. minimum width
- Tree size classes, total cover %, structure
- Invasive plants rating %
- Disturbance codes, restored areas
- May roll up to group level



# Vegetation Mapping: Groups (16) to Fine-scale Alliances\* (76)

- **RWF - Riparian Evergreen and Deciduous Woodland Group**

- *Acer negundo Alliance*
- *Juglans hindsii special and semi-natural stands Alliance*
- *Platanus racemosa Alliance*
- *Populus fremontii Alliance*

- **RWS - Southwestern North America riparian wash/scrub includes:**

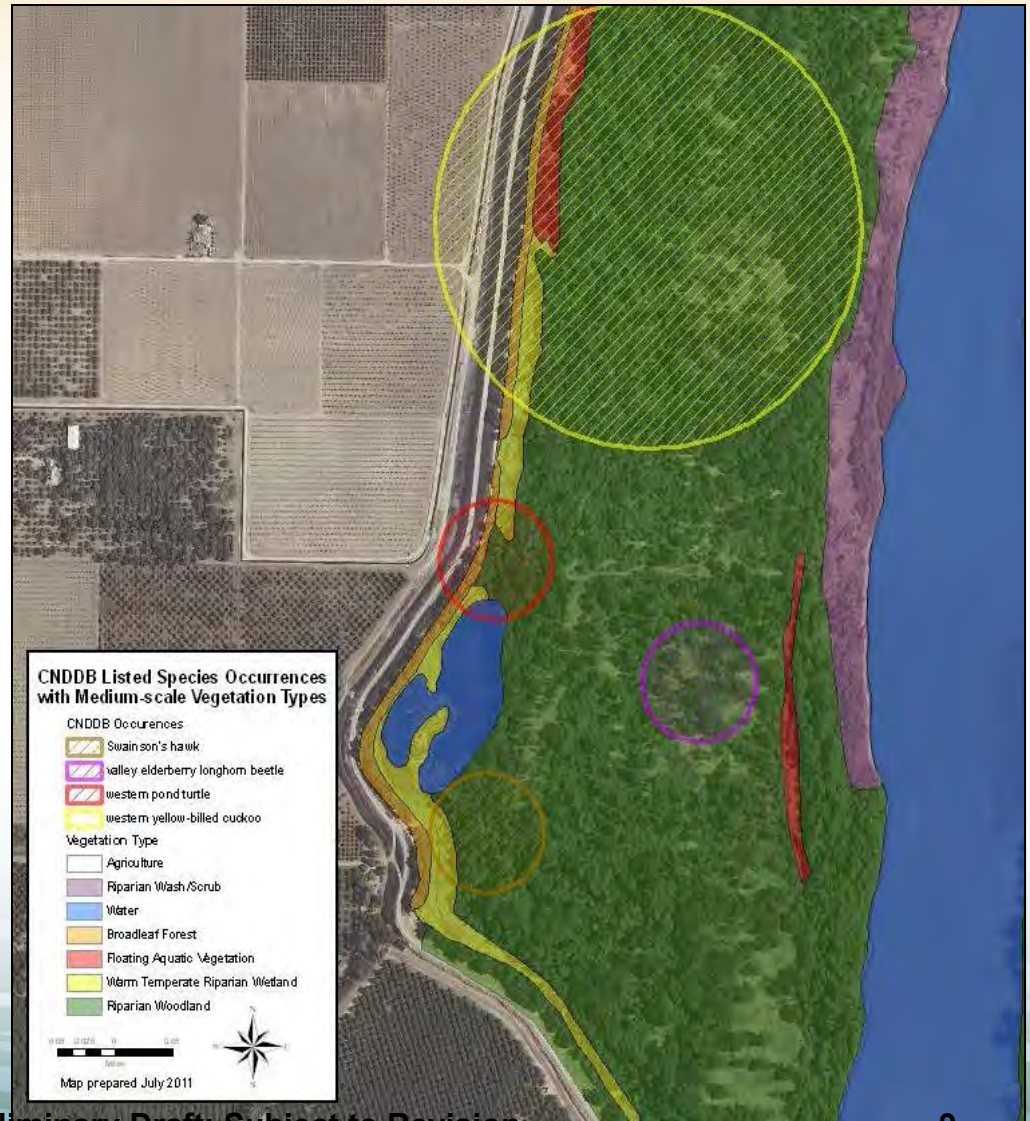
- *Baccharis salicifolia Alliance*
- *Cephalanthus occidentalis Alliance*
- *Rosa californica Alliance*
- *Salix exigua Alliance*
- *Salix lasiolepis Alliance*
- *Sambucus nigra Alliance*



# Assessment of Existing Conditions

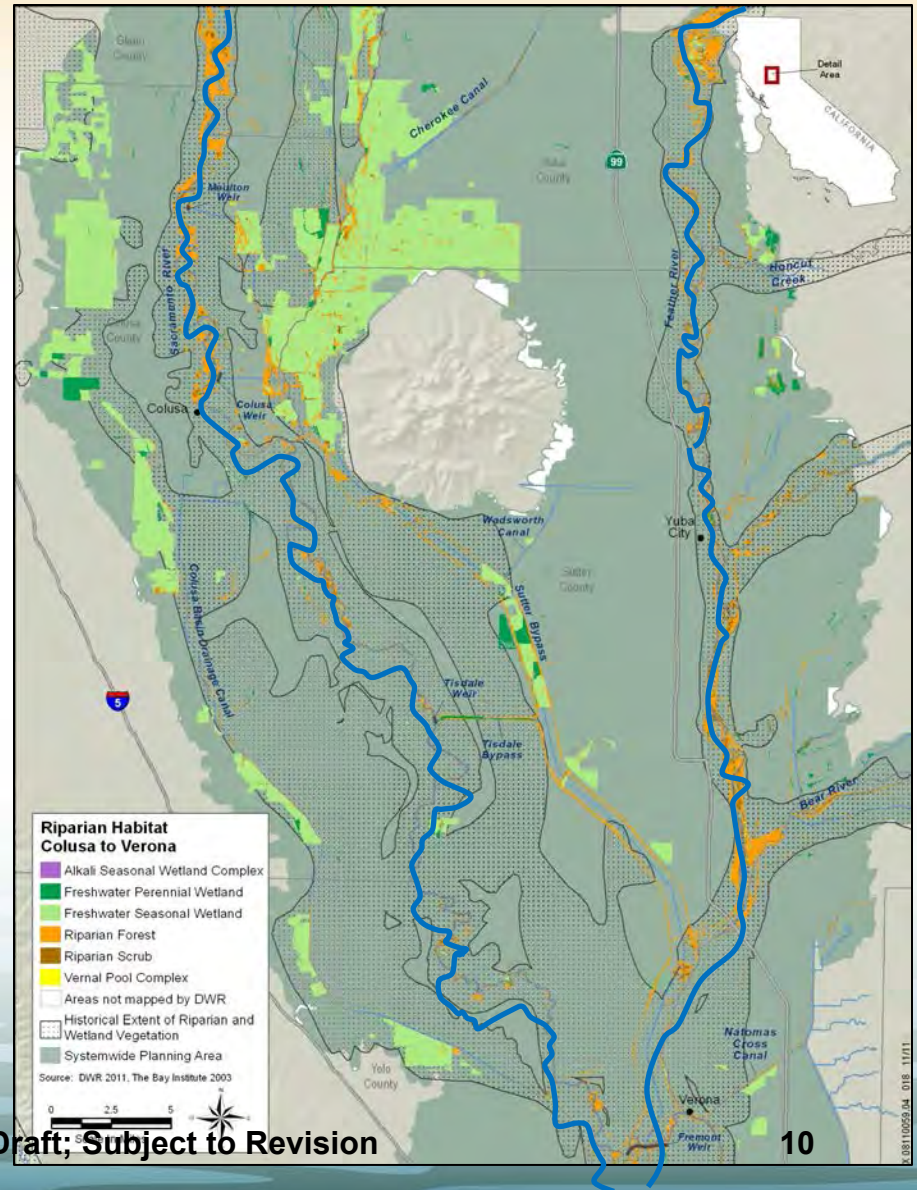


July 18, 2013

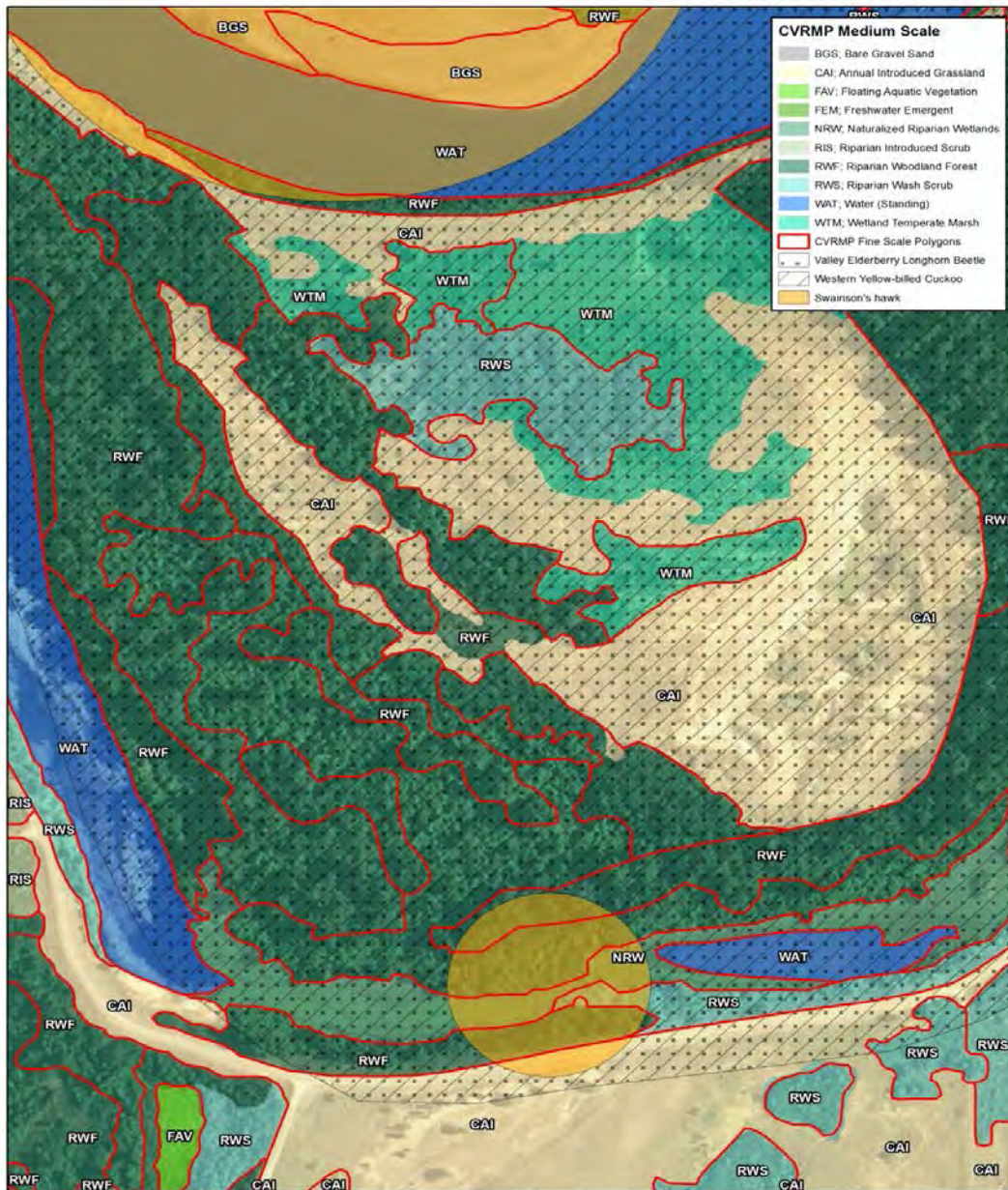


Preliminary Draft, Subject to Revision

# Estimating Land Cover Change



# Conservation Planning



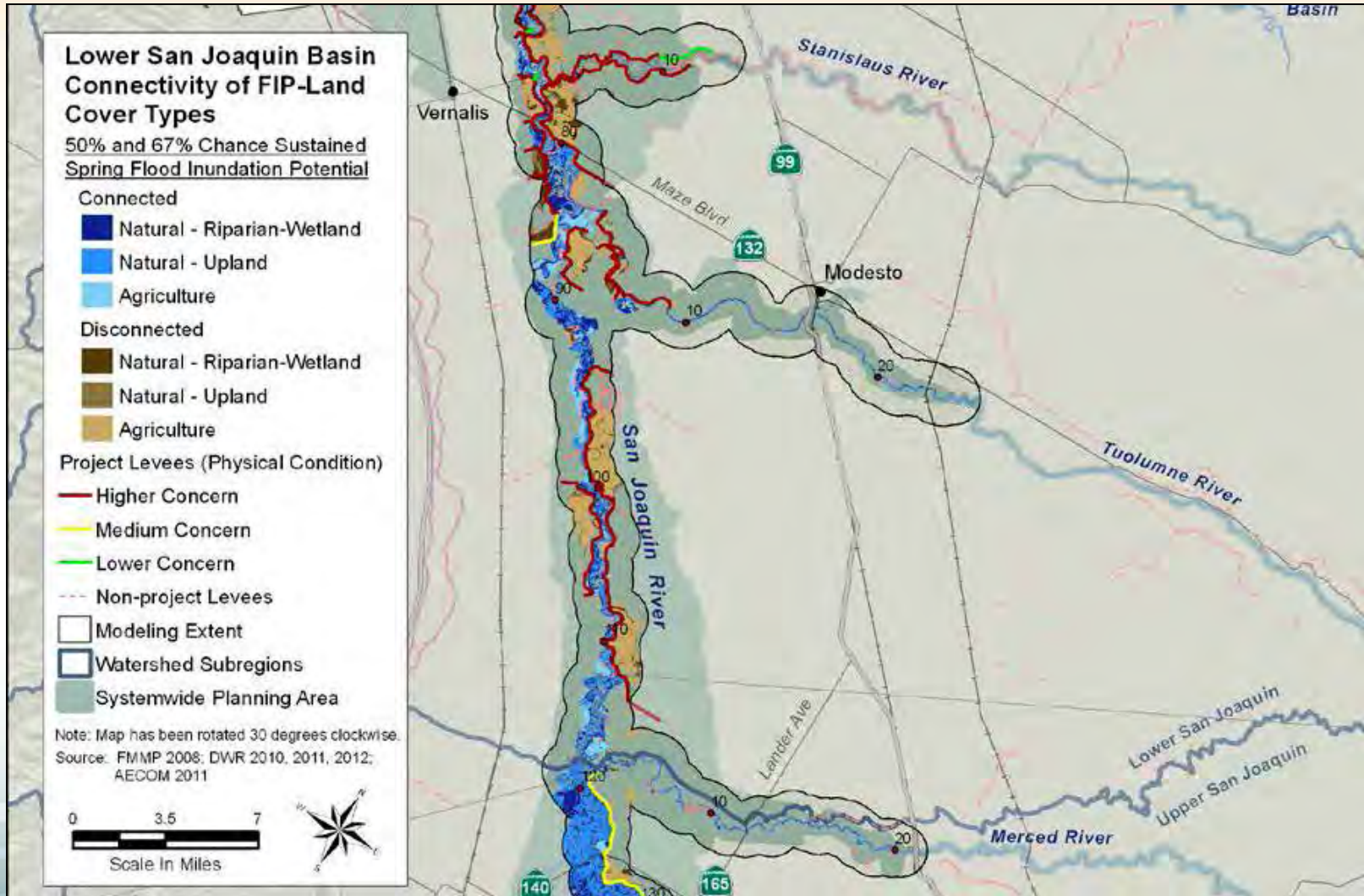
- *Species Habitat Mapping*
- *Coarse Impact Assessment*

July 18, 2013

Preliminary Draft; Subject to Revision

11

# Analysis of Restoration Opportunities



# Invasive Weed Management

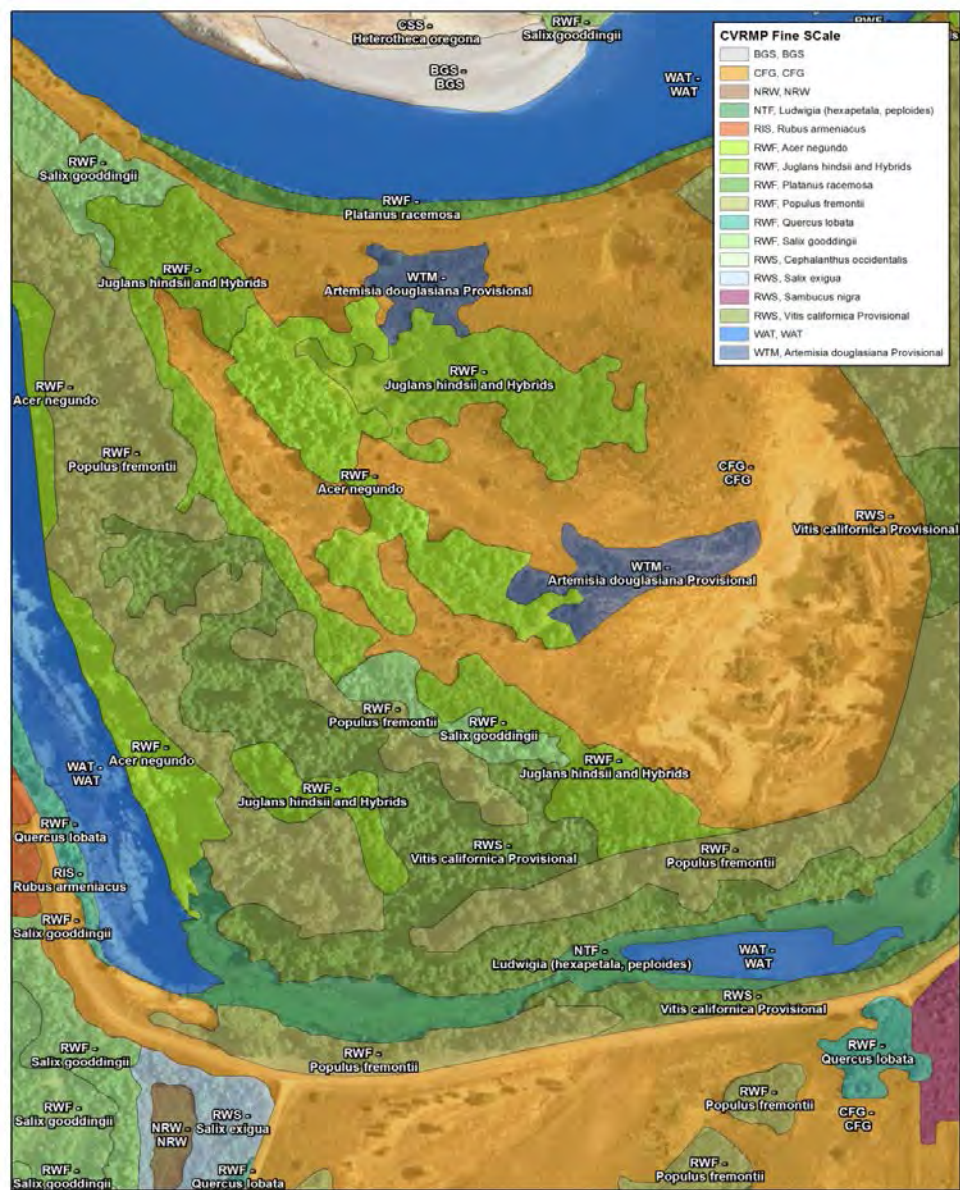
## *CS Invasive Weed Strategy*

- *Mapping and data gathering for priority weeds*
- *Management, eradication, revegetation*
- *Integrated permitting*
- *Regional coordination*



# Future Efforts:

- *Regular map updates*
- *Regional updates as needed for planning and projects*
- *Continued modeling efforts*
- *Habitat analyses*
- *Data gaps*



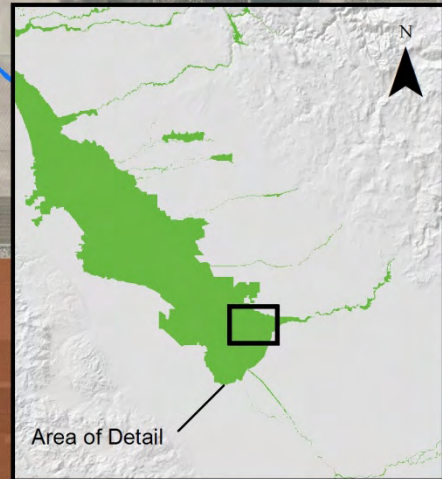
# *San Joaquin River Restoration Program Study Area*

# Legend

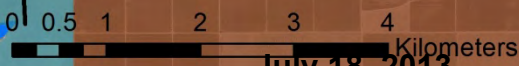
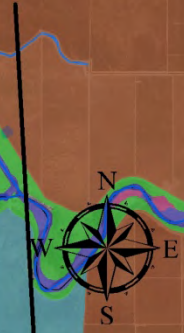
## Medium Scale Map

### Riparian Group

- AGR
- BGS
- CAI
- CFG
- CSS
- IMF
- NRW
- WAT



Reach 2A



July 18, 2013

Preliminary Draft; Subject to Revision

16



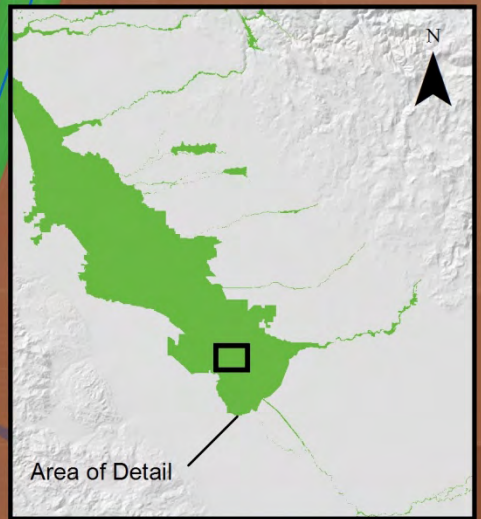
**Legend**

**Medium Scale Map**

**Riparian Group**

-  AGR
-  BGS
-  CAI
-  CFG
-  CSS
-  IMF
-  NRW
-  WAT

**Reach 2B**



0 0.4 0.8 1.6 3.2 Kilometers

July 18, 2013

Preliminary Draft; Subject to Revision

# Legend

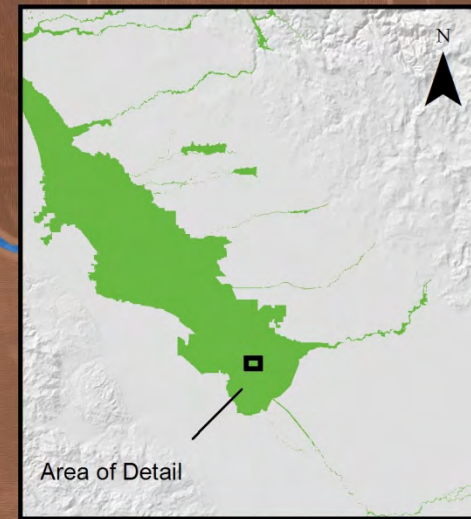
## Medium Scale Map

### Riparian Group

- AGR
- BGS
- CAI
- CFG
- CSS
- IMF
- NRW
- RWF
- RWS
- WAT

Reach 2B

Reach 2A



0 0.1750.35 0.7 July 18, 2013 4  
Kilometers

Preliminary Draft; Subject to Revision



Reach 2B

Reach 2A



0 0.2 0.4 0.8 July 18, 2013 Kilometers

Preliminary Draft; Subject to Revision

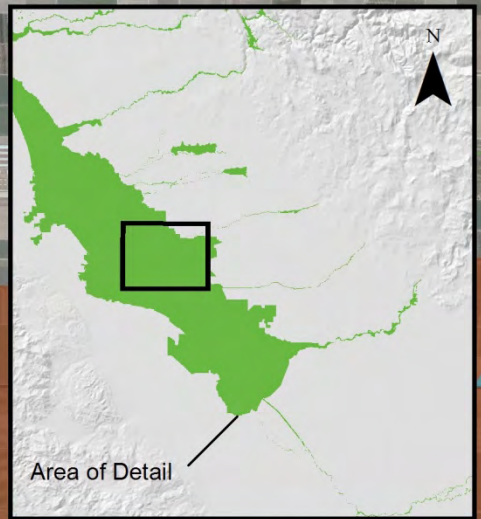
# Legend

## Medium Scale Map

### Riparian Group

- AGR
- BGS
- CAI
- CFG
- CSS
- IMF
- NRW
- WAT

Reach 4A



0 1 2 4 Kilometers

July 18, 2013

Preliminary Draft; Subject to Revision

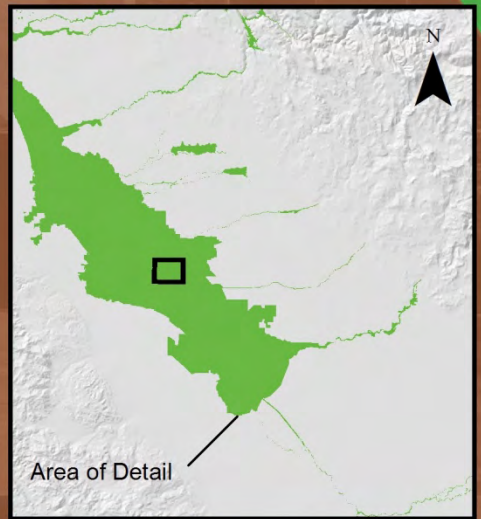
# Legend

## Medium Scale Map

### Riparian Group

-  AGR
-  BGS
-  CAI
-  CFG
-  CSS
-  IMF
-  NRW
-  WAT

Reach 4A

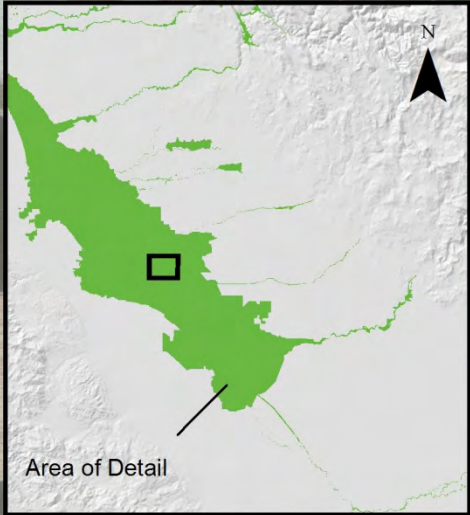
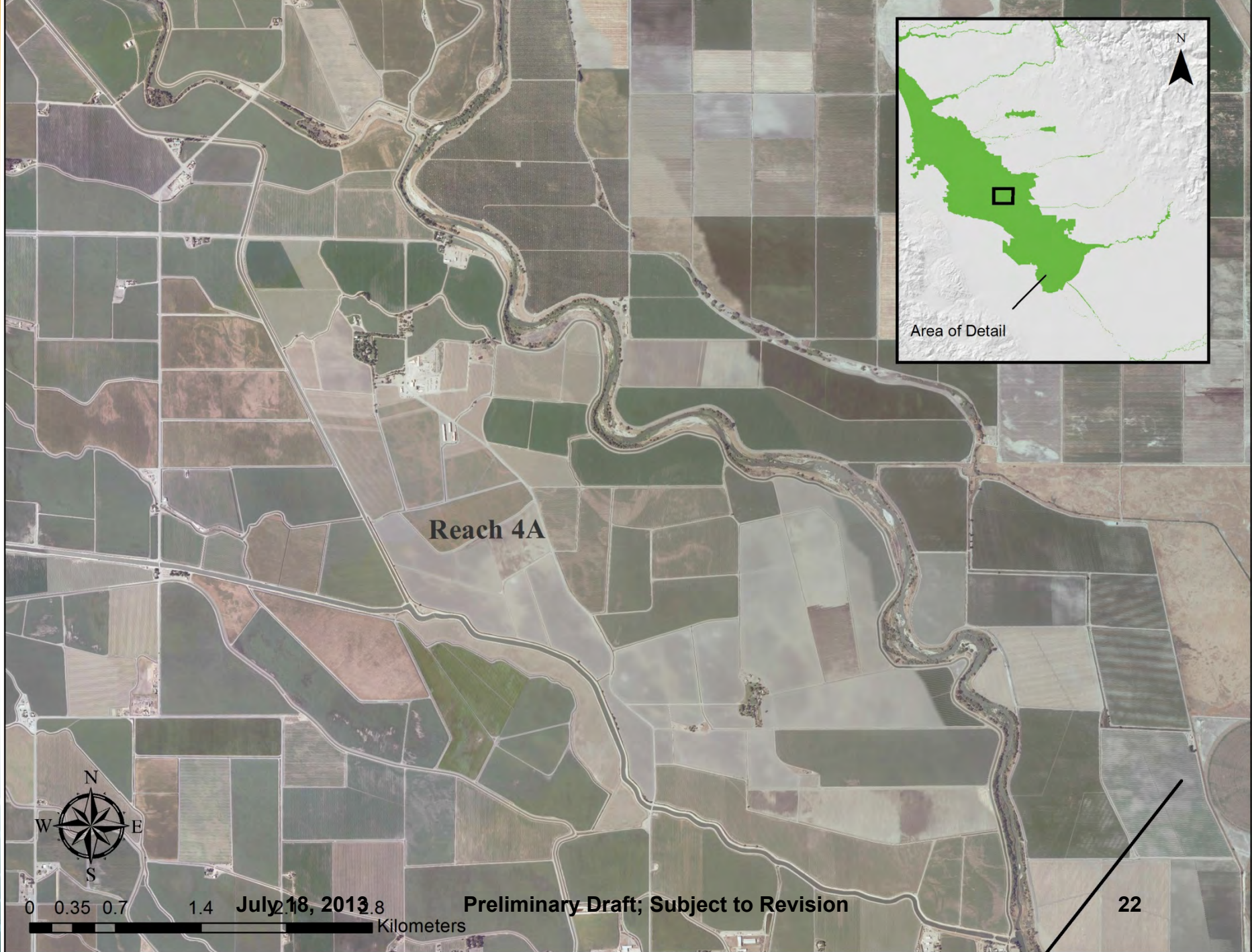


0 0.35 0.7 1.4 July 18, 2013 8  
Kilometers

A scale bar with four segments, labeled with the values 0, 0.35, 0.7, and 1.4. To the right of the scale bar is the date 'July 18, 2013' followed by a small number '8'. Below the scale bar is the word 'Kilometers'.

Preliminary Draft; Subject to Revision

21



**Reach 4A**



0 0.35 0.7 1.4 **July 18, 2013** 8  
Kilometers

**Preliminary Draft; Subject to Revision**

**22**

\*\* Medium-scale map data links on the FESSRO public website (see archives):

[http://www.water.ca.gov/floodsafe/fessro/announce\\_archive/index.cfm](http://www.water.ca.gov/floodsafe/fessro/announce_archive/index.cfm)

Medium-Scale Central Valley and Delta Vegetation maps downloads available:  
Medium Scale Central Valley Riparian and Land Use, 2011 (ds723)

[ftp://ftp.dfg.ca.gov/BDB/GIS/BIOS/Public\\_Datasets/700\\_799/ds723.zip](ftp://ftp.dfg.ca.gov/BDB/GIS/BIOS/Public_Datasets/700_799/ds723.zip)

Medium Scale Central Valley Riparian and Aggregated Delta Veg, 2011 (ds724)

[ftp://ftp.dfg.ca.gov/BDB/GIS/BIOS/Public\\_Datasets/700\\_799/ds724.zip](ftp://ftp.dfg.ca.gov/BDB/GIS/BIOS/Public_Datasets/700_799/ds724.zip)

BIOS Public Viewer: <http://imaps.dfg.ca.gov/viewers/biospublic/app.asp>

Map Viewer provided by GIC: Central Valley Riparian Mapping Project: Medium-scale Map  
- *Viewer only*

[http://132.241.99.43/flexsites/CVRMP/CVRMP\\_MediumScale/](http://132.241.99.43/flexsites/CVRMP/CVRMP_MediumScale/)

<http://tinyurl.com/CVRMP-MediumScale>

# Questions?

Ron Melcer

[rmelcer@water.ca.gov](mailto:rmelcer@water.ca.gov)

July 18, 2013

Preliminary Draft; Subject to Revision

24



# Credit

- *Data collection & mapping credit:*
  - CSU Chico, Geographic Information Center
  - DFG Vegetation and Mapping Program
  - RHJV coordination and consistency (Medium-scale map)

