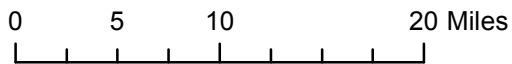


● Stage Monitoring Locations



**RECLAMATION**  
Managing Water in the West

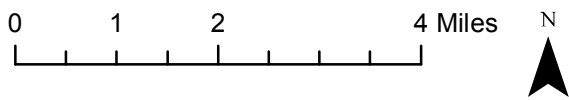
# Overview Stage Monitoring Locations

Preliminary Data

**SAN JOAQUIN RIVER**  
RESTORATION PROGRAM



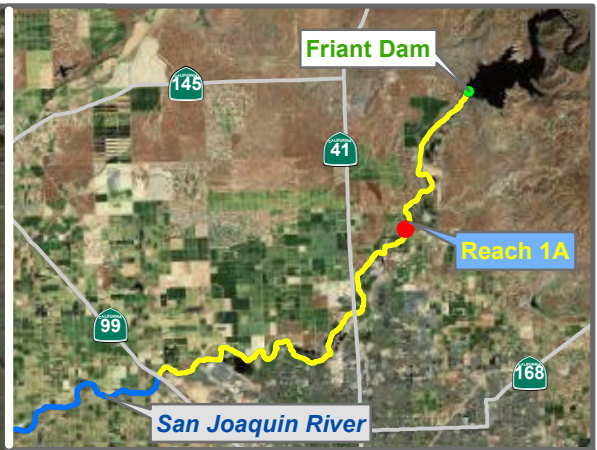
Last Updated: 6/12/2012



**RECLAMATION**  
*Managing Water in the West*

## Reach 1A Stage Monitoring Locations





Reach = 1A  
 River Mile = 260.2  
 X = -119.7533 Y = 36.9230  
 (Horizontal Datum is NAD83)  
 Distance From River Centerline (ft)=  
 Ground Surface Elevation (ft NAVD88) =  
 Measurement Pt. Elevation (ft NAVD88) = 278.4  
 Site = Coombs-Arnold Channel

Habitat =  
 Protocol Reference = ATR Appendix C  
 Organization = USBR

Measurements:  
 1. Type = Measurement  
 Interval = Approx. Monthly  
 Date Range =  
 2. Type =  
 Interval =  
 Date Range =  
 3. Type =  
 Interval =  
 Date Range =

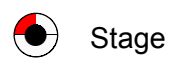
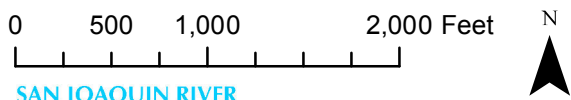
Description:  
 Staff Gage

Datalogger Type =  
 HEC-RAS Cross-section =  
 Current Rating Curve =  
 Influences:

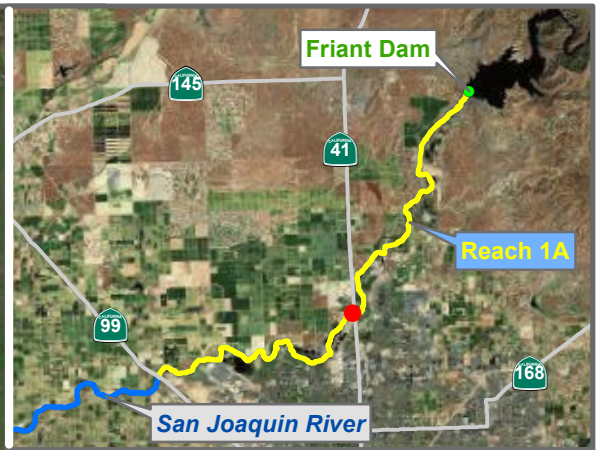
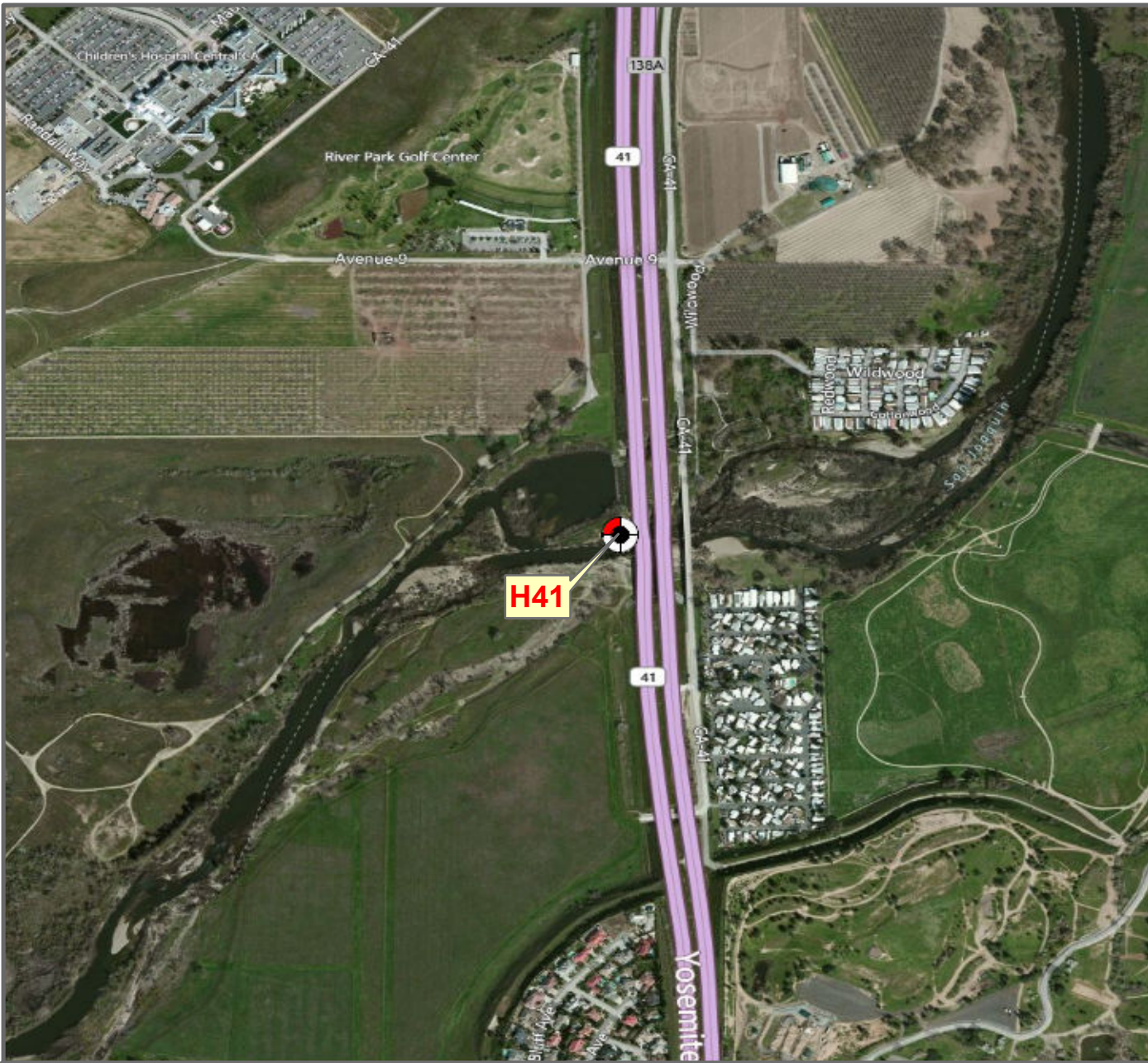
Notes:

\* = assumed value  
 bgs = below ground surface  
 NR = not recorded

Last Updated:  
 6/12/2012  
 Preliminary Data



# Monitoring Location CAC



Reach = 1A  
 River Mile = 255.1  
 X = -119.7932 Y = 36.8762  
 (Horizontal Datum is NAD83)  
 Distance From River Centerline (ft)=  
 Ground Surface Elevation (ft NAVD88) =  
 Measurement Pt. Elevation (ft NAVD88) = 257.89  
 Site = Highway 41

Habitat =  
 Protocol Reference = ATR Appendix C  
 Organization = USBR

Measurements:  
 1. Type = Realtime  
 Interval = 15 min  
 Date Range =  
 2. Type =  
 Interval =  
 Date Range =  
 3. Type =  
 Interval =  
 Date Range =

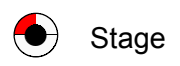
Description:

Datalogger Type =  
 HEC-RAS Cross-section =  
 Current Rating Curve =  
 Influences:

Notes:

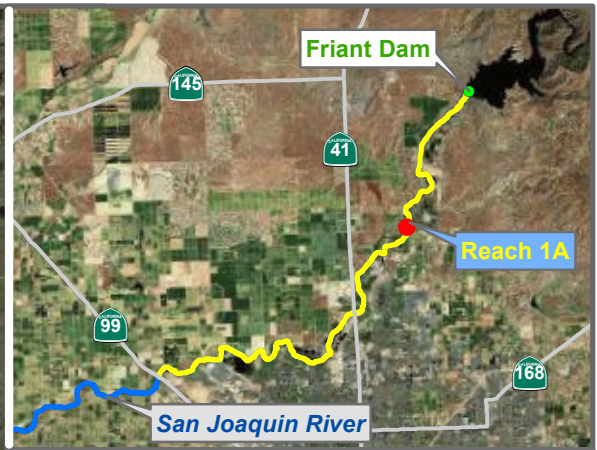
\* = assumed value  
 bgs = below ground surface  
 NR = not recorded

Last Updated:  
 6/12/2012  
 Preliminary Data



Stage

# Monitoring Location H41



Reach = 1A  
 River Mile = 260.3  
 X = -119.7527 Y = 36.9240  
 (Horizontal Datum is NAD83)  
 Distance From River Centerline (ft)=  
 Ground Surface Elevation (ft NAVD88) =  
 Measurement Pt. Elevation (ft NAVD88) = 297.2  
 Site = Above G.C. Intakes

Habitat =  
 Protocol Reference = ATR Appendix C  
 Organization = USBR

Measurements:  
 1. Type = Measurement  
 Interval = Approx. Monthly  
 Date Range =  
 2. Type =  
 Interval =  
 Date Range =  
 3. Type =  
 Interval =  
 Date Range =

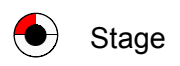
Description:  
 Staff Gage

Datalogger Type =  
 HEC-RAS Cross-section =  
 Current Rating Curve =  
 Influences:

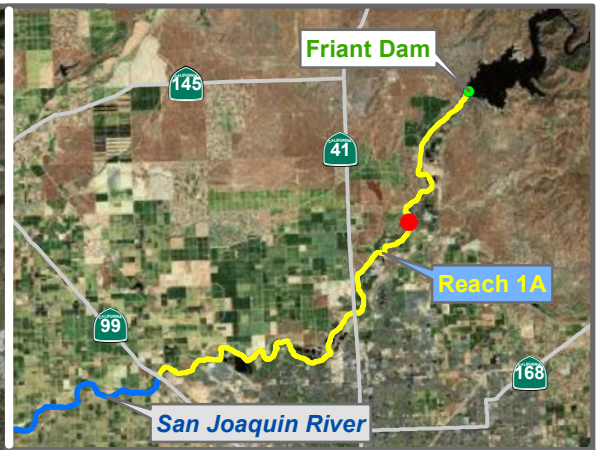
Notes:

\* = assumed value  
 bgs = below ground surface  
 NR = not recorded

Last Updated:  
 6/12/2012  
 Preliminary Data



# Monitoring Location RAI



Reach = 1A  
 River Mile = 260.5  
 X = -119.7510 Y = 36.9265  
 (Horizontal Datum is NAD83)  
 Distance From River Centerline (ft)=  
 Ground Surface Elevation (ft NAVD88) =  
 Measurement Pt. Elevation (ft NAVD88) =  
 Site = Main Channel

Habitat =  
 Protocol Reference = ATR Appendix C  
 Organization = USBR

Measurements:  
 1. Type = Measurement  
 Interval = Approx. Monthly  
 Date Range =  
 2. Type =  
 Interval =  
 Date Range =  
 3. Type =  
 Interval =  
 Date Range =

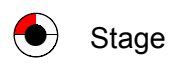
Description:  
 Staff Gage

Datalogger Type =  
 HEC-RAS Cross-section =  
 Current Rating Curve =  
 Influences:

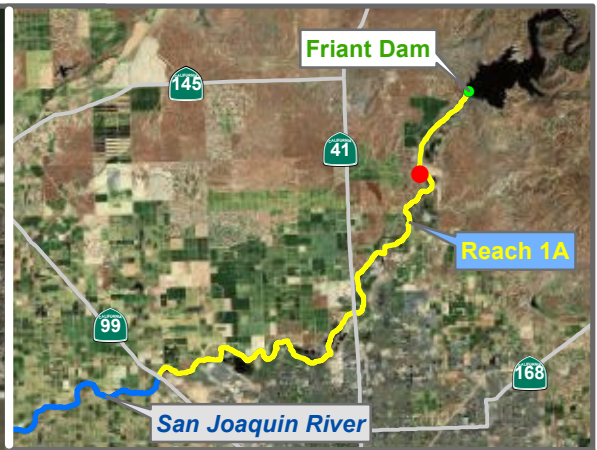
Notes:

\* = assumed value  
 bgs = below ground surface  
 NR = not recorded

Madera County  
 Right Bank  
 Status = Existing



# Monitoring Location RMC

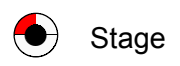


Reach = 1A  
 River Mile = 263.4  
 X = -119.7423 Y = 36.9539  
 (Horizontal Datum is NAD83)  
 Distance From River Centerline (ft)=  
 Ground Surface Elevation (ft NAVD88) =  
 Measurement Pt. Elevation (ft NAVD88) = 289.21  
 Site = Head Ledger Island

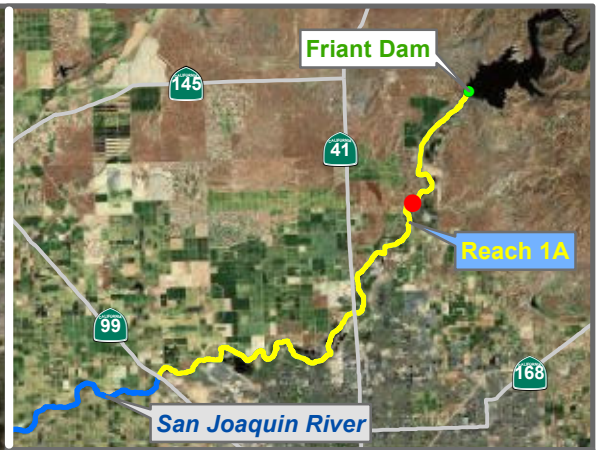
Fresno County  
 Left Bank  
 Status = Existing  
 Habitat =  
 Protocol Reference = ATR Appendix C  
 Organization = DWR  
 Measurements:  
 1. Type = Datalogger  
 Interval = 15 min  
 Date Range =  
 2. Type =  
 Interval =  
 Date Range =  
 3. Type =  
 Interval =  
 Date Range =  
 Description:  
 Water Level Recorder

Datalogger Type =  
 HEC-RAS Cross-section =  
 Current Rating Curve =  
 Influences:  
 Madera Canal, Friant Dam, Friant Kern Canal

Notes:  
 \* = assumed value  
 bgs = below ground surface  
 NR = not recorded  
 Last Updated:  
 6/12/2012  
 Preliminary Data



# Monitoring Location WLR 1



**WLR 2**

Reach = 1A  
 River Mile = 261.5  
 X = -119.7477 Y = 36.9381  
 (Horizontal Datum is NAD83)  
 Distance From River Centerline (ft)=  
 Ground Surface Elevation (ft NAVD88) =  
 Measurement Pt. Elevation (ft NAVD88) = 284.934  
 Site = Willow Unit Grade Control  
 Habitat =  
 Protocol Reference = ATR Appendix C  
 Organization = DWR  
 Measurements:  
 1. Type = Datalogger  
 Interval = 15 min  
 Date Range =  
 2. Type =  
 Interval =  
 Date Range =  
 3. Type =  
 Interval =  
 Date Range =  
 Description:  
 Water Level Recorder

Datalogger Type =  
 HEC-RAS Cross-section =  
 Current Rating Curve =  
 Influences:  
 Madera Canal, Friant Dam, Friant Kern Canal

Notes:

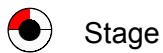
\* = assumed value  
 bgs = below ground surface  
 NR = not recorded

Last Updated:  
 6/12/2012  
 Preliminary Data

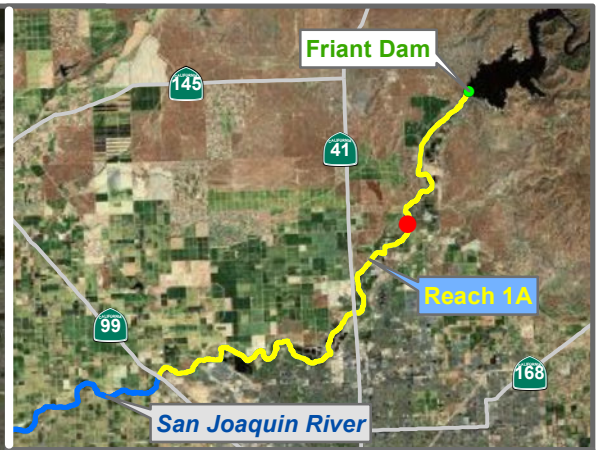
0 500 1,000 2,000 Feet



# Monitoring Location WLR 2







Reach = 1A  
 River Mile = 260.4  
 X = -119.7522 Y = 36.9256  
 (Horizontal Datum is NAD83)  
 Distance From River Centerline (ft)=  
 Ground Surface Elevation (ft NAVD88) =  
 Measurement Pt. Elevation (ft NAVD88) = 274.847  
 Site = Rank Island Grade Control

Habitat =  
 Protocol Reference = ATR Appendix C  
 Organization = DWR

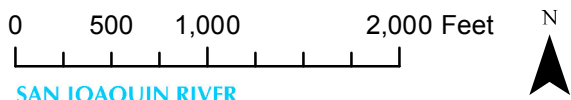
- Measurements:
- 1. Type = Datalogger  
 Interval = 15 min  
 Date Range =
  - 2. Type =  
 Interval =  
 Date Range =
  - 3. Type =  
 Interval =  
 Date Range =

Description:  
 Water Level Recorder

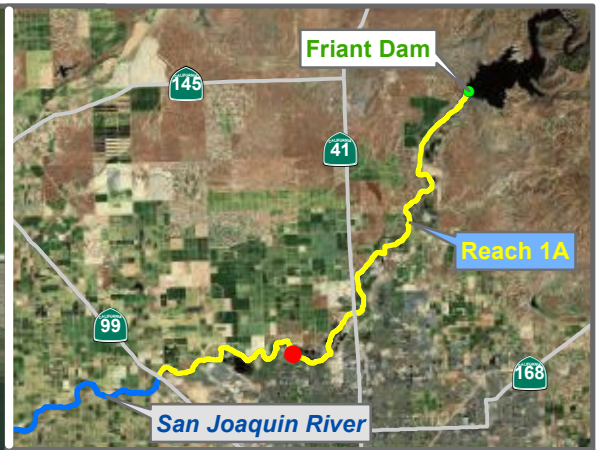
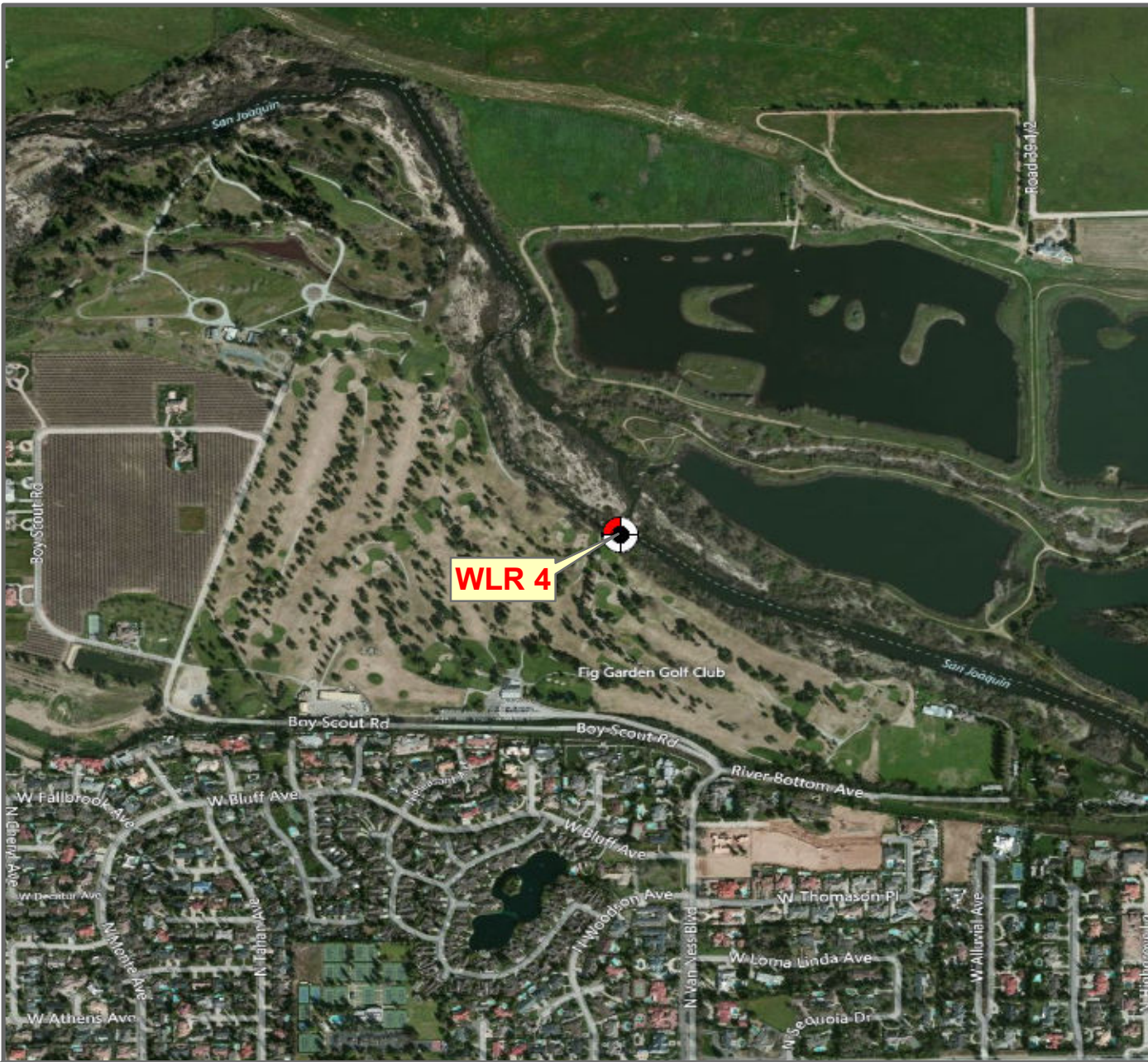
Datalogger Type =  
 HEC-RAS Cross-section =  
 Current Rating Curve =  
 Influences:  
 Madera Canal, Friant Dam, Friant Kern Canal

Notes:  
 \* = assumed value  
 bgs = below ground surface  
 NR = not recorded

Last Updated:  
 6/12/2012  
 Preliminary Data



# Monitoring Location WLR 3



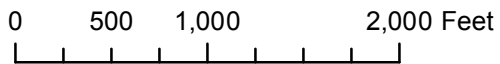
Reach = 1A  
 River Mile = 251.1  
 X = -119.8366 Y = 36.8536  
 (Horizontal Datum is NAD83)  
 Distance From River Centerline (ft)=  
 Ground Surface Elevation (ft NAVD88) =  
 Measurement Pt. Elevation (ft NAVD88) = 245.699  
 Site = Sycamore Island Flow Split  
 Habitat =  
 Protocol Reference = ATR Appendix C  
 Organization = DWR  
 Measurements:  
 1. Type = Datalogger  
    Interval = 15 min  
    Date Range =  
 2. Type =  
    Interval =  
    Date Range =  
 3. Type =  
    Interval =  
    Date Range =  
 Description:  
 Water Level Recorder

Datalogger Type =  
 HEC-RAS Cross-section =  
 Current Rating Curve =  
 Influences:

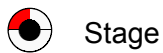
Notes:

\* = assumed value  
 bgs = below ground surface  
 NR = not recorded

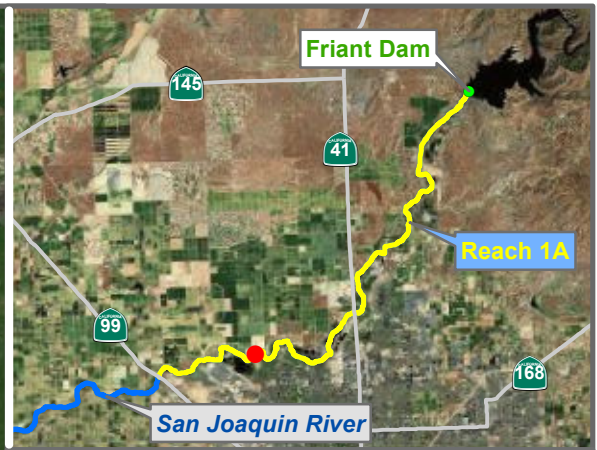
Last Updated:  
 6/12/2012  
 Preliminary Data



# Monitoring Location WLR 4



Stage



**WLR 5**

Reach = 1A  
 River Mile = 248.4  
 X = -119.8634 Y = 36.8541  
 (Horizontal Datum is NAD83)  
 Distance From River Centerline (ft)=  
 Ground Surface Elevation (ft NAVD88) =  
 Measurement Pt. Elevation (ft NAVD88) = 232.899  
 Site = Milburn Unit  
 Habitat =  
 Protocol Reference = ATR Appendix C  
 Organization = DWR  
 Measurements:  
 1. Type = Datalogger  
    Interval = 15 min  
    Date Range =  
 2. Type =  
    Interval =  
    Date Range =  
 3. Type =  
    Interval =  
    Date Range =  
 Description:  
 Water Level Recorder

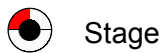
Datalogger Type =  
 HEC-RAS Cross-section =  
 Current Rating Curve =  
 Influences:

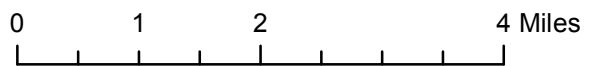
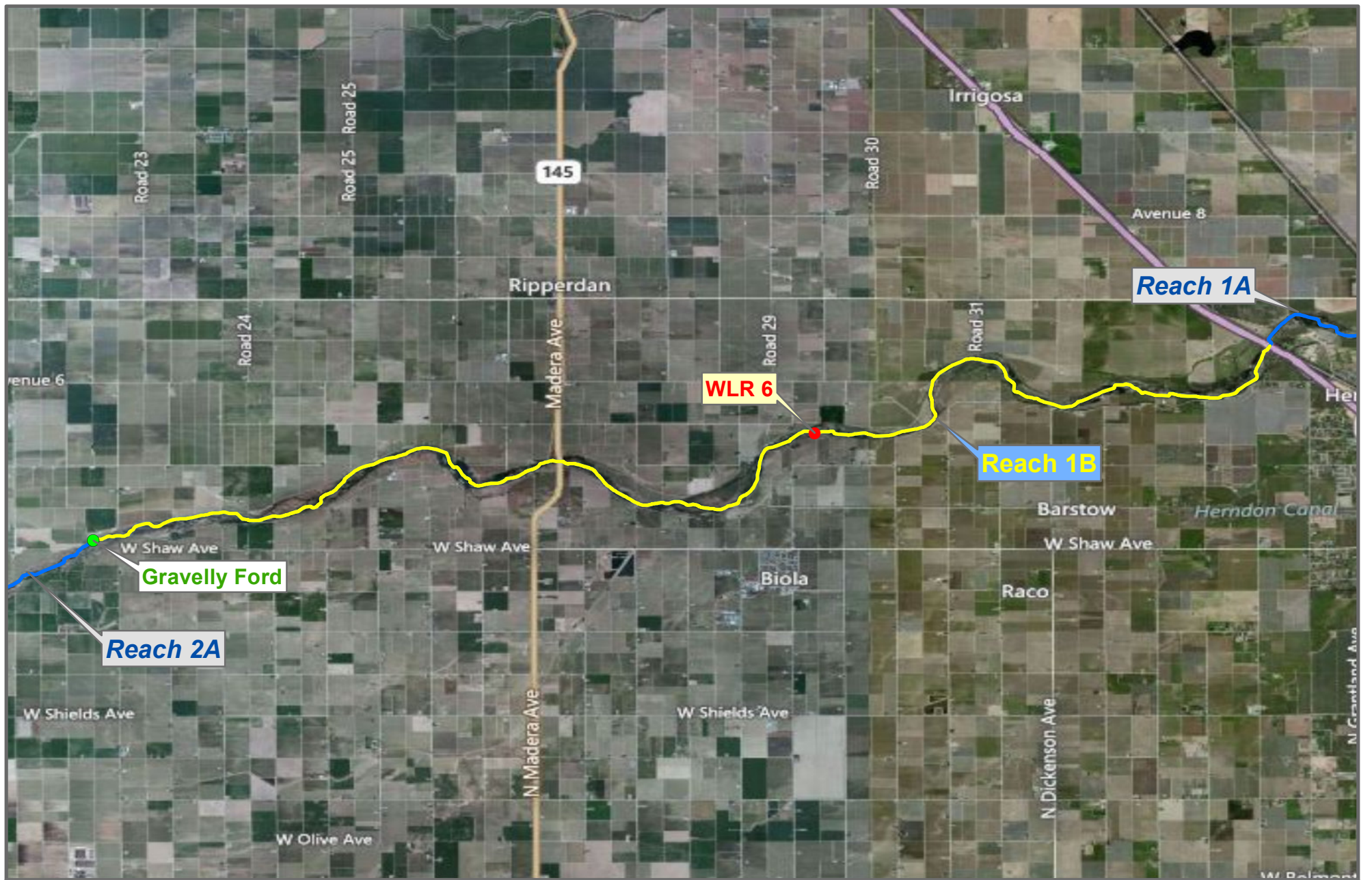
Notes:

0 500 1,000 2,000 Feet



# Monitoring Location WLR 5



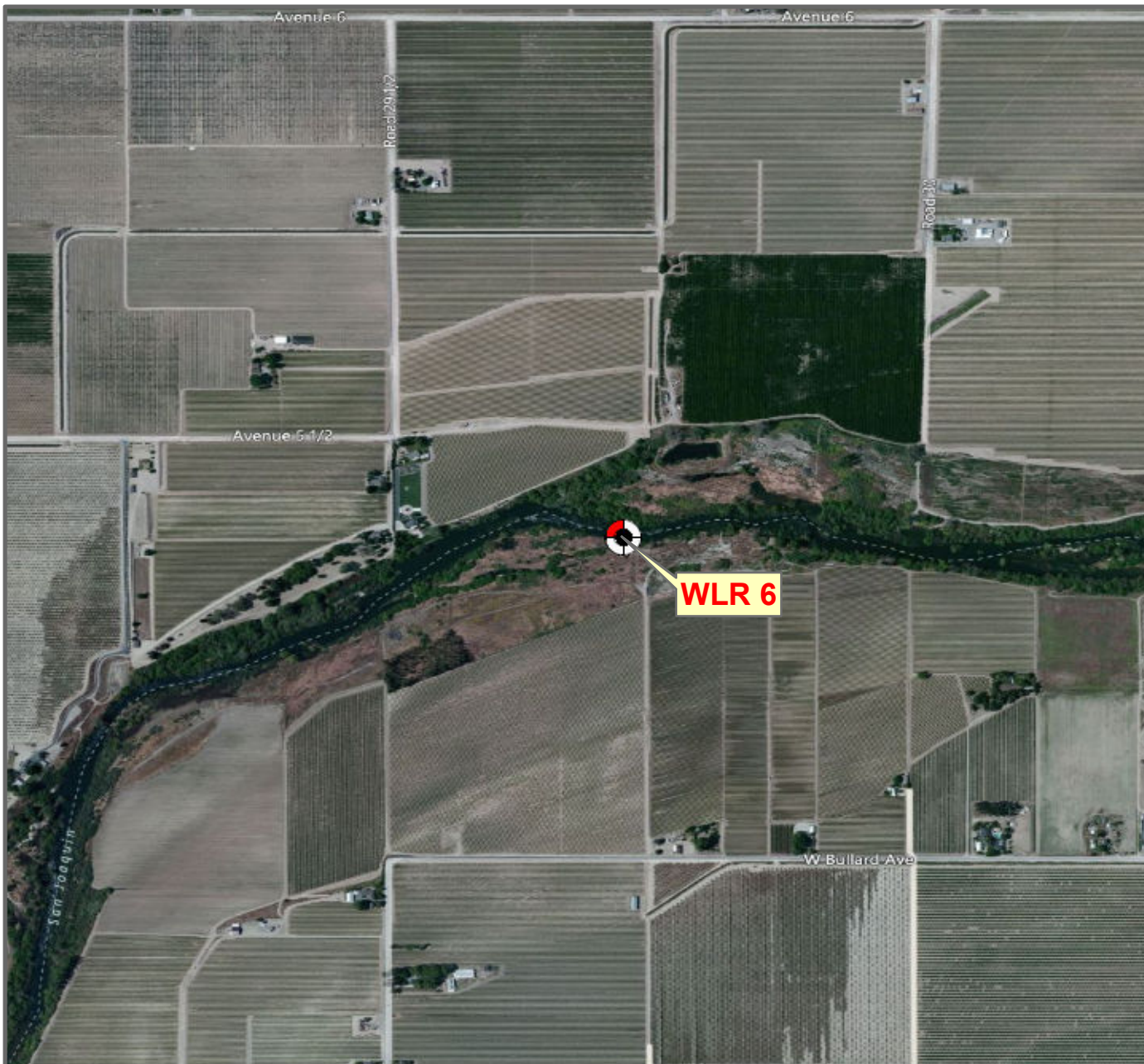


**RECLAMATION**  
*Managing Water in the West*

## Reach 1B Stage Monitoring Locations



Preliminary Data



Reach = 1B  
 River Mile = 237.7  
 X = -120.0116 Y = 36.8279  
 (Horizontal Datum is NAD83)  
 Distance From River Centerline (ft)=  
 Ground Surface Elevation (ft NAVD88) =  
 Measurement Pt. Elevation (ft NAVD88) = 206.905  
 Site = Gerhardt Property  
 Habitat =  
 Protocol Reference = ATR Appendix C  
 Organization = DWR  
 Measurements:  
 1. Type = Datalogger  
    Interval = 15 min  
    Date Range =  
 2. Type =  
    Interval =  
    Date Range =  
 3. Type =  
    Interval =  
    Date Range =  
 Description:  
 Water Level Recorder

Datalogger Type =  
 HEC-RAS Cross-section =  
 Current Rating Curve =  
 Influences:  
 Madera Lateral 6.2

Notes:

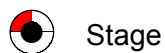
\* = assumed value  
 bgs = below ground surface  
 NR = not recorded

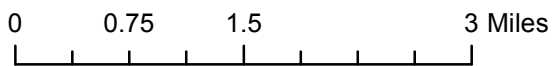
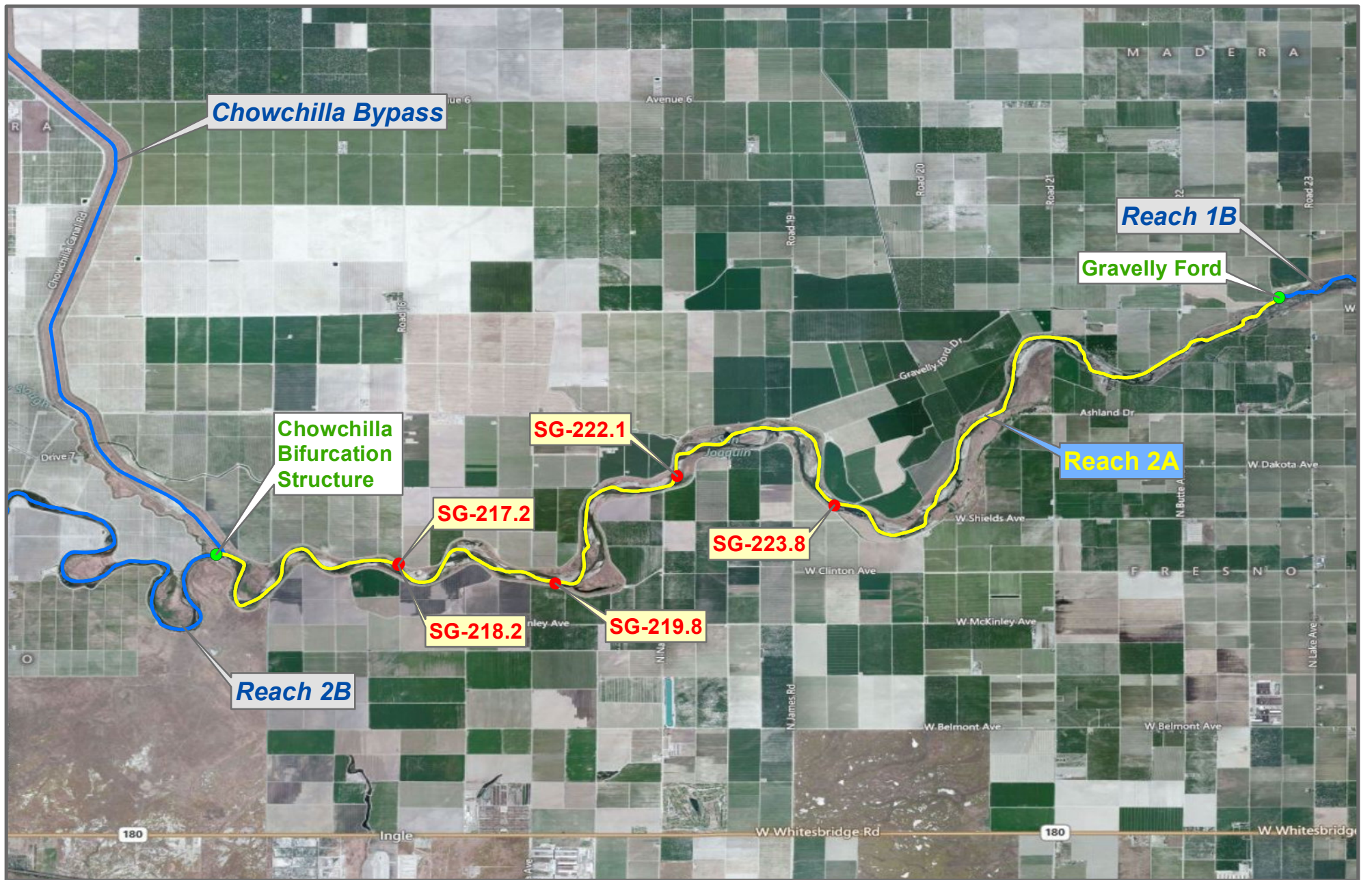
Last Updated:  
 6/12/2012  
 Preliminary Data

0 500 1,000 2,000 Feet



# Monitoring Location WLR 6





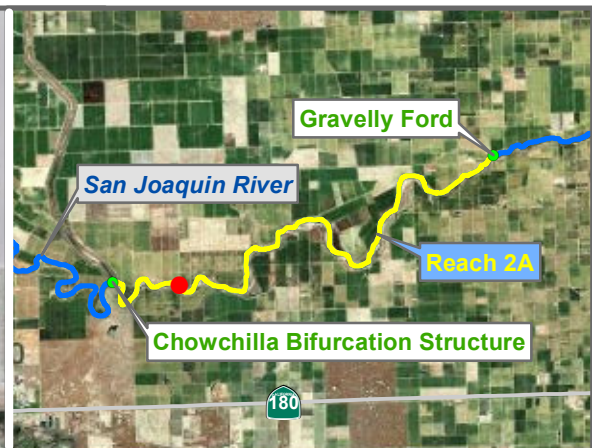
**RECLAMATION**  
Managing Water in the West

## Reach 2A Stage Monitoring Locations

Preliminary Data



Last Updated: 6/12/2012



Reach = 2A  
 River Mile = 217.2  
 X = -120.2598 Y = 36.7721  
 (Horizontal Datum is NAD83)  
 Distance From River Centerline (ft)=  
 Ground Surface Elevation (ft NAVD88) =  
 Measurement Pt. Elevation (ft NAVD88) = 163.51  
 Site = Transect 13

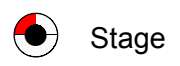
Habitat =  
 Protocol Reference = ATR Appendix C  
 Organization = USBR  
 Measurements:  
 1. Type = Datalogger  
    Interval = Hourly  
    Date Range =  
 2. Type =  
    Interval =  
    Date Range =  
 3. Type =  
    Interval =  
    Date Range =  
 Description:  
 2 inch pipe

Datalogger Type = Solinst  
 HEC-RAS Cross-section =  
 Current Rating Curve =  
 Influences:  
 Gravelly Ford Canal, Chowchilla Bypass

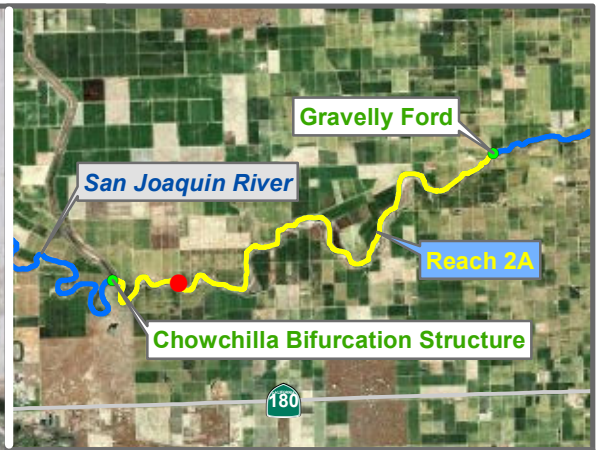
Notes:

\* = assumed value  
 bgs = below ground surface  
 NR = not recorded

Last Updated:  
 6/12/2012  
 Preliminary Data



# Monitoring Location SG-217.2



Reach = 2A  
 River Mile = 218.2  
 X = -120.2600 Y = 36.7720  
 (Horizontal Datum is NAD83)  
 Distance From River Centerline (ft)=  
 Ground Surface Elevation (ft NAVD88) =  
 Measurement Pt. Elevation (ft NAVD88) = 170.53  
 Site = Transect 12

Madera County  
 Right Bank  
 Status = Existing

Habitat =  
 Protocol Reference = ATR Appendix C  
 Organization = USBR

- Measurements:
1. Type = Datalogger  
 Interval = Hourly  
 Date Range =
  2. Type =  
 Interval =  
 Date Range =
  3. Type =  
 Interval =  
 Date Range =

Description:  
 2 inch pipe

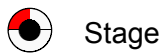
Datalogger Type = Solinst  
 HEC-RAS Cross-section =  
 Current Rating Curve =  
 Influences:  
 Gravelly Ford Canal, Chowchilla Bypass

Notes:

\* = assumed value  
 bgs = below ground surface  
 NR = not recorded

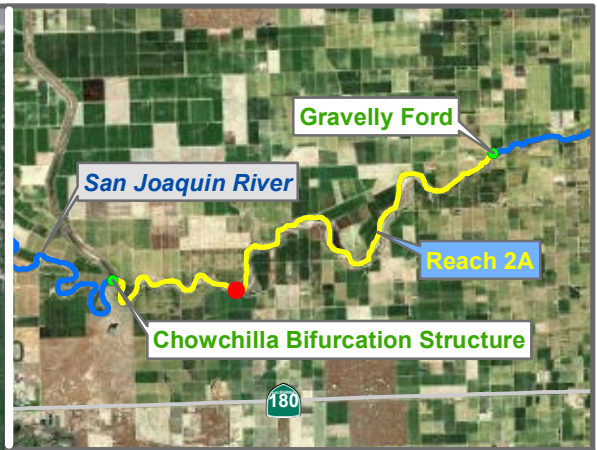
Last Updated:  
 6/12/2012  
 Preliminary Data

0 500 1,000 2,000 Feet



# Monitoring Location SG-218.2





Reach = 2A  
 River Mile = 219.8  
 X = -120.2380 Y = 36.7694  
 (Horizontal Datum is NAD83)  
 Distance From River Centerline (ft)=  
 Ground Surface Elevation (ft NAVD88) = 169.58  
 Measurement Pt. Elevation (ft NAVD88) = 174.88  
 Site = Transect 10

Fresno County  
 Left Bank  
 Status = Existing

Habitat =  
 Protocol Reference = ATR Appendix C  
 Organization = USBR

- Measurements:
1. Type = Datalogger  
Interval = Hourly  
Date Range =
  2. Type =  
Interval =  
Date Range =
  3. Type =  
Interval =  
Date Range =

Description:  
 2 inch pipe

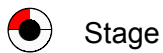
Datalogger Type = Solinst  
 HEC-RAS Cross-section =  
 Current Rating Curve =  
 Influences:  
 Gravelly Ford Canal, Chowchilla Bypass

Notes:

\* = assumed value  
 bgs = below ground surface  
 NR = not recorded

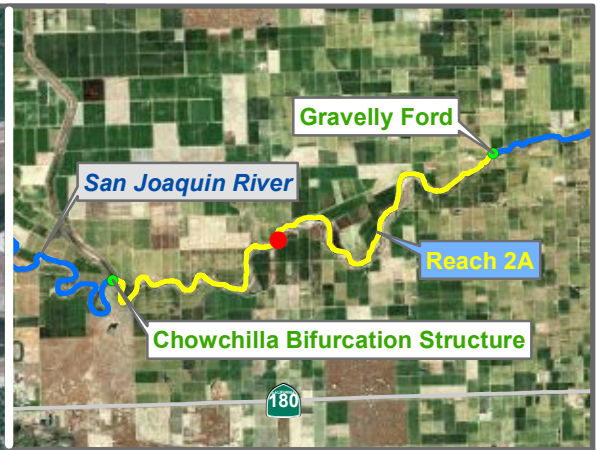
Last Updated:  
 6/12/2012  
 Preliminary Data

0 500 1,000 2,000 Feet



Stage

# Monitoring Location SG-219.8



**SG-222.1**

N Napa Ave

Reach = 2A  
 River Mile = 222.1  
 X = -120.2211 Y = 36.7843  
 (Horizontal Datum is NAD83)  
 Distance From River Centerline (ft)=  
 Ground Surface Elevation (ft NAVD88) =  
 Measurement Pt. Elevation (ft NAVD88) = 177.71  
 Site = Napa Ave.

Habitat =  
 Protocol Reference = ATR Appendix C  
 Organization = USBR

- Measurements:
1. Type = Datalogger  
 Interval = Hourly  
 Date Range =
  2. Type =  
 Interval =  
 Date Range =
  3. Type =  
 Interval =  
 Date Range =

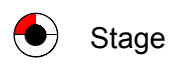
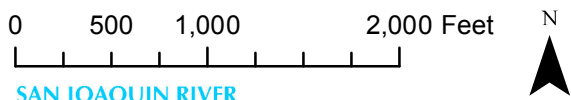
Description:  
 2 inch pipe

Datalogger Type = Solinst  
 HEC-RAS Cross-section =  
 Current Rating Curve =  
 Influences:  
 Gravelly Ford Canal, Chowchilla Bypass

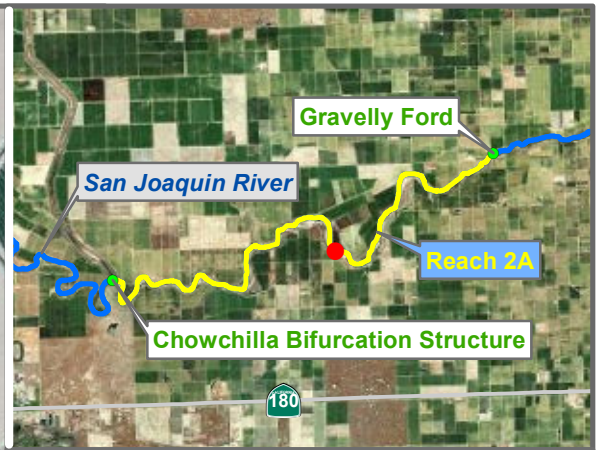
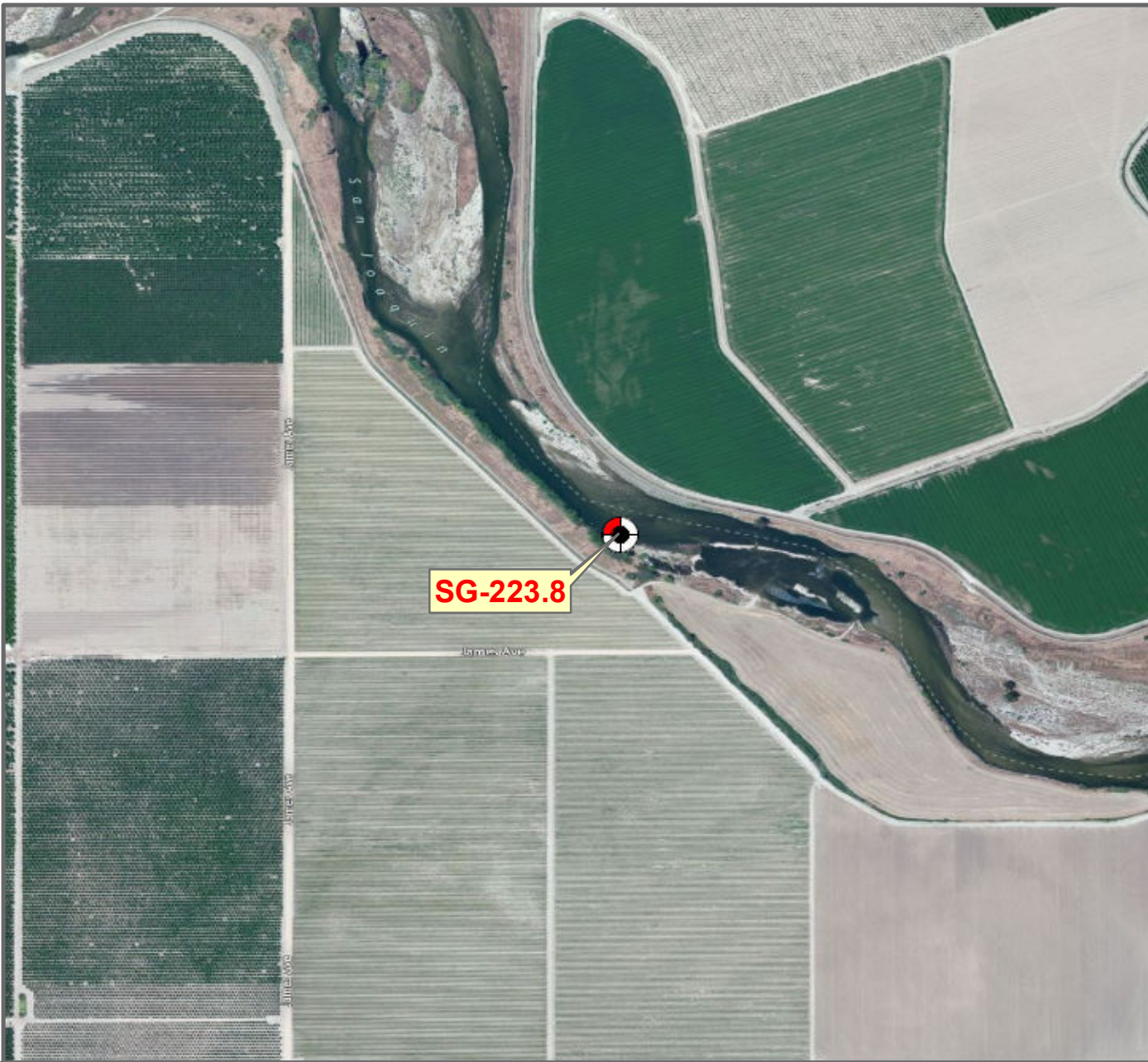
Notes:

\* = assumed value  
 bgs = below ground surface  
 NR = not recorded

Last Updated:  
 6/12/2012  
 Preliminary Data



# Monitoring Location SG-222.1



**SG-223.8**

Reach = 2A  
 River Mile = 223.8  
 X = -120.1992 Y = 36.7803  
 (Horizontal Datum is NAD83)  
 Distance From River Centerline (ft)=  
 Ground Surface Elevation (ft NAVD88) =  
 Measurement Pt. Elevation (ft NAVD88) = 180.98  
 Site = Shields Ave.

Fresno County  
 Left Bank  
 Status = Existing

Habitat =  
 Protocol Reference = ATR Appendix C  
 Organization = USBR

- Measurements:
1. Type = Datalogger  
 Interval = Hourly  
 Date Range =
  2. Type =  
 Interval =  
 Date Range =
  3. Type =  
 Interval =  
 Date Range =

Description:  
 2 inch pipe

Datalogger Type = Solinst  
 HEC-RAS Cross-section =  
 Current Rating Curve =  
 Influences:  
 Gravelly Ford Canal, Chowchilla Bypass

Notes:

\* = assumed value  
 bgs = below ground surface  
 NR = not recorded

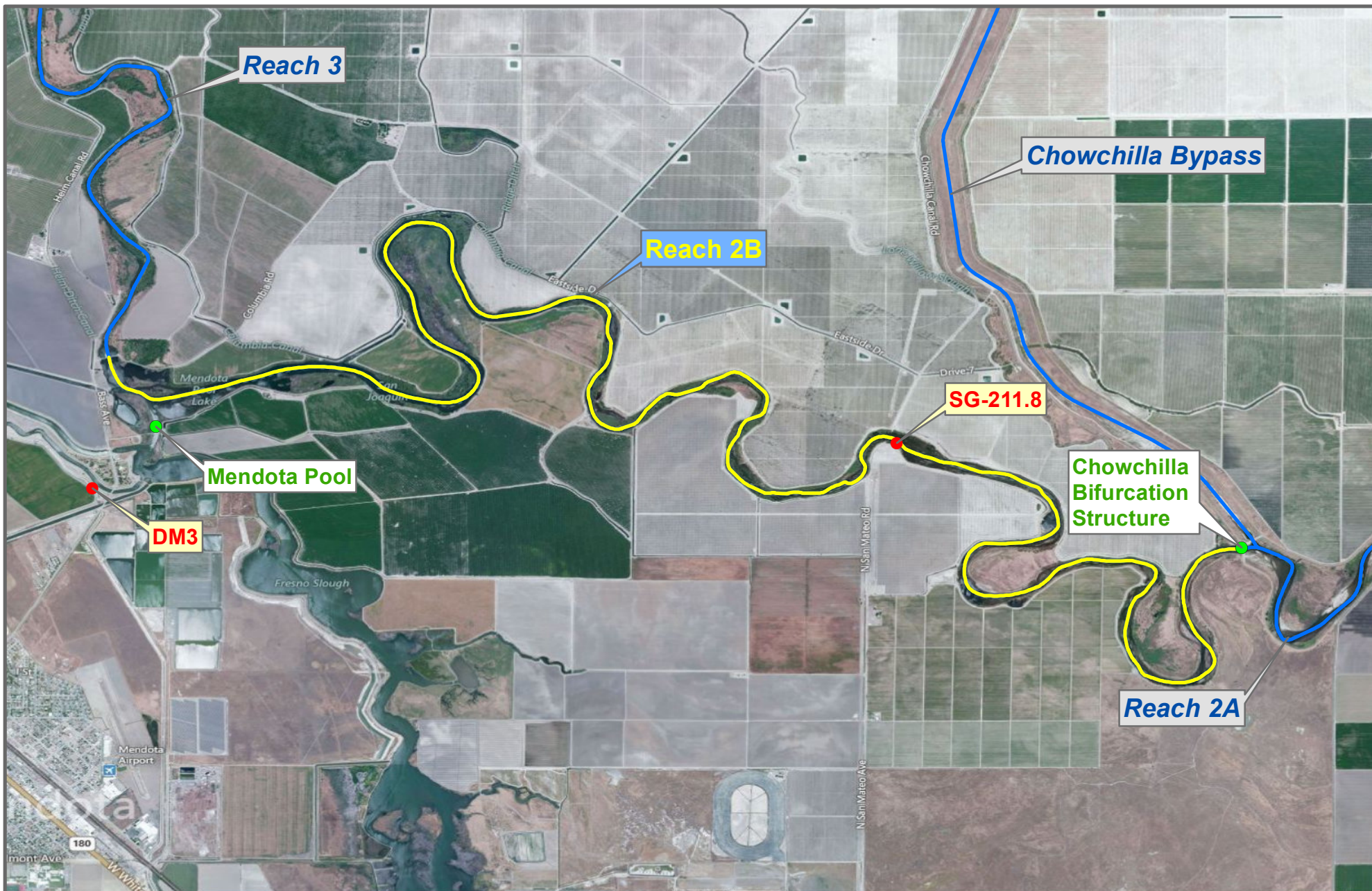
Last Updated:  
 6/12/2012  
 Preliminary Data

0 500 1,000 2,000 Feet



Stage

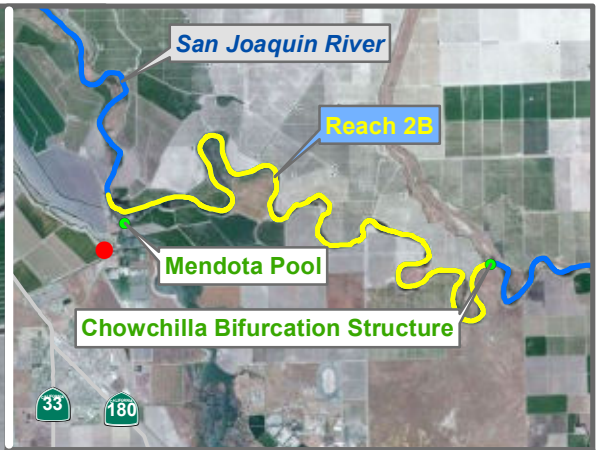
# Monitoring Location SG-223.8



**RECLAMATION**  
*Managing Water in the West*

## Reach 2B Stage Monitoring Locations





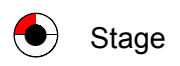
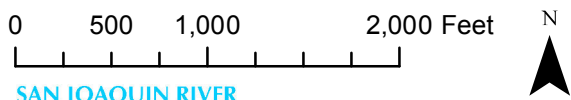
Reach = 2B  
 River Mile = 257.89  
 X = -120.3740 Y = 36.7780  
 (*Horizontal Datum is NAD83*)  
 Distance From River Centerline (ft)=  
 Ground Surface Elevation (ft NAVD88) =  
 Measurement Pt. Elevation (ft NAVD88) =  
 Site = Check 21  
 Habitat =  
 Protocol Reference = ATR Appendix C  
 Organization = USBR  
 Measurements:  
 1. Type = Realtime  
    Interval = 15 min  
    Date Range =  
 2. Type =  
    Interval =  
    Date Range =  
 3. Type =  
    Interval =  
    Date Range =  
 Description:

Datalogger Type =  
 HEC-RAS Cross-section =  
 Current Rating Curve =  
 Influences:  
 Mendota Pool Diversions

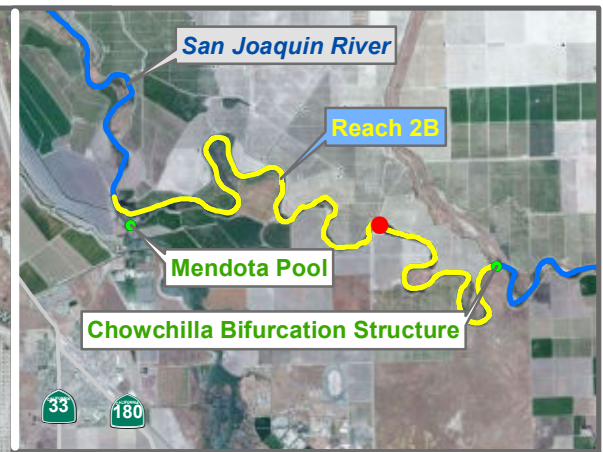
Notes:

\* = assumed value  
 bgs = below ground surface  
 NR = not recorded

Last Updated:  
 6/12/2012  
 Preliminary Data



# Monitoring Location DM3



**SG-211.8**

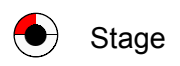
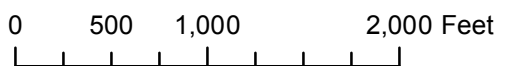
Reach = 2B  
 River Mile = 211.8  
 X = -120.3119 Y = 36.7815  
 (Horizontal Datum is NAD83)  
 Distance From River Centerline (ft)=  
 Ground Surface Elevation (ft NAVD88) =  
 Measurement Pt. Elevation (ft NAVD88) = 165.22  
 Site = San Mateo Ave.  
 Habitat =  
 Protocol Reference = ATR Appendix C  
 Organization = USBR  
 Measurements:  
 1. Type = Datalogger  
 Interval = Hourly  
 Date Range =  
 2. Type =  
 Interval =  
 Date Range =  
 3. Type =  
 Interval =  
 Date Range =  
 Description:

Datalogger Type = Solinst  
 HEC-RAS Cross-section =  
 Current Rating Curve =  
 Influences:  
 Mendota Pool Diversions, Columbian Canal,  
 Chowchilla Canal

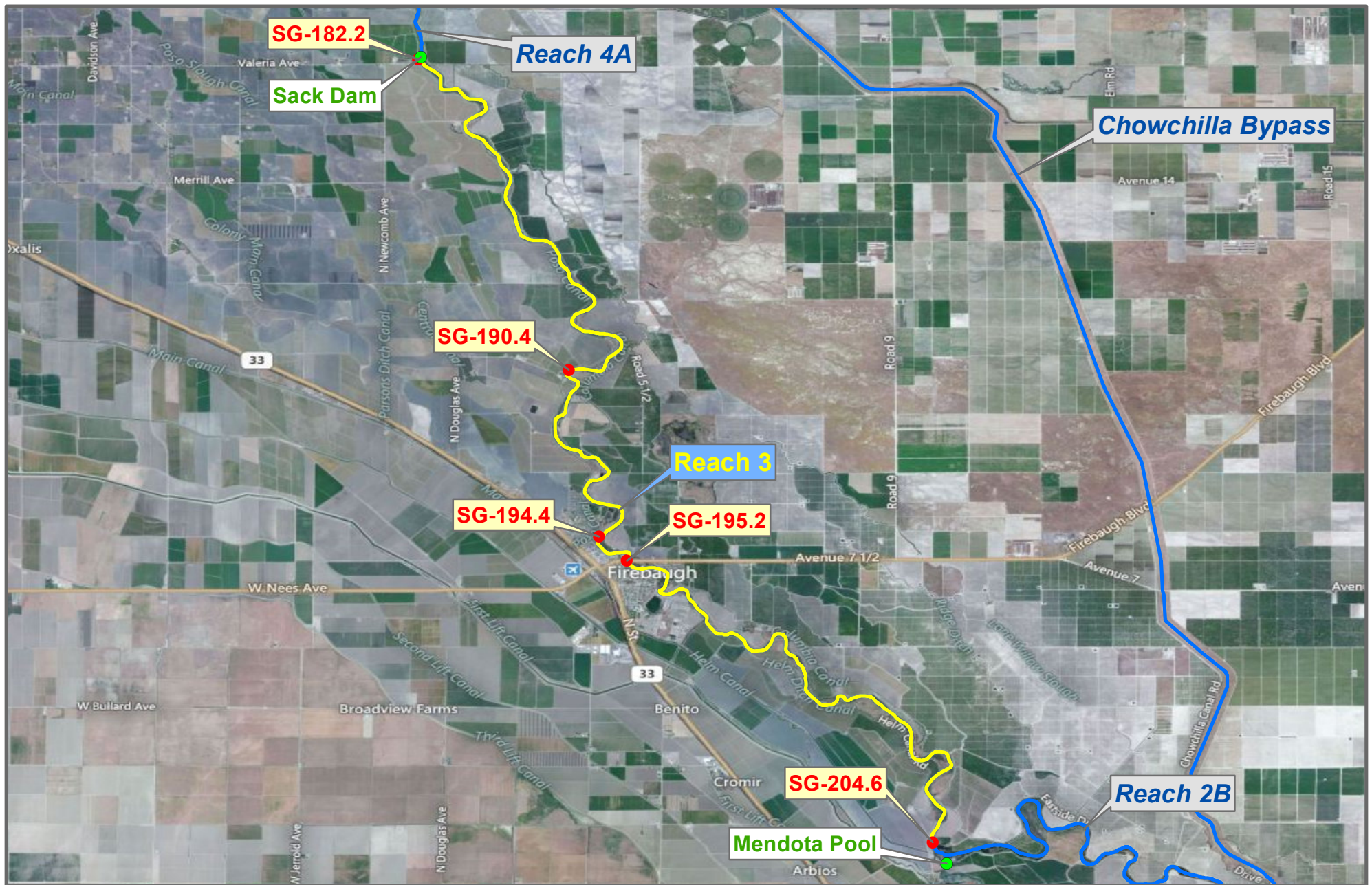
Notes:

\* = assumed value  
 bgs = below ground surface  
 NR = not recorded

Last Updated:  
 6/12/2012  
 Preliminary Data



# Monitoring Location SG-211.8



0 1 2 4 Miles



**RECLAMATION**  
Managing Water in the West

## Reach 3 Stage Monitoring Locations

**SAN JOAQUIN RIVER**  
RESTORATION PROGRAM





Reach = 3  
 River Mile = 182.2  
 X = -120.5009 Y = 36.9831  
 (Horizontal Datum is NAD83)  
 Distance From River Centerline (ft)=  
 Ground Surface Elevation (ft NAVD88) =  
 Measurement Pt. Elevation (ft NAVD88) = 129.76  
 Site = Valeria Avenue

Fresno County  
 Left Bank  
 Status = Existing

Habitat =  
 Protocol Reference =  
 Organization = CCID  
 Measurements:  
 1. Type = Measurement  
    Interval = Approx. Daily  
    Date Range =  
 2. Type =  
    Interval =  
    Date Range =  
 3. Type =  
    Interval =  
    Date Range =

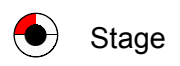
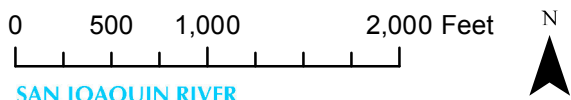
Description:  
 Staff Gage

Datalogger Type =  
 HEC-RAS Cross-section =  
 Current Rating Curve =  
 Influences:  
 Arroyo Canal

Notes:

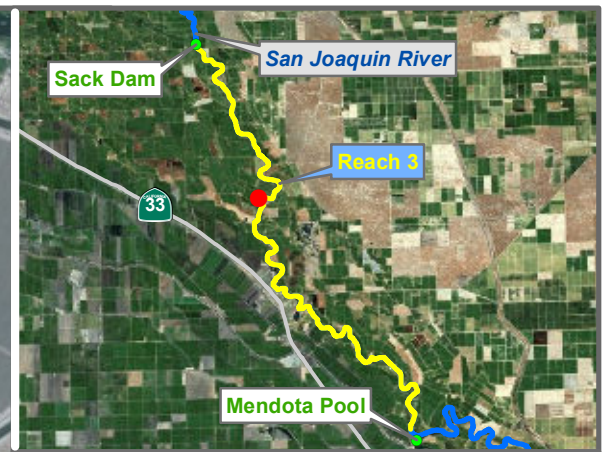
\* = assumed value  
 bgs = below ground surface  
 NR = not recorded

Last Updated:  
 6/12/2012  
 Preliminary Data



# Monitoring Location SG-182.2





Reach = 3  
 River Mile = 190.4  
 X = -120.4634 Y = 36.9058  
 (Horizontal Datum is NAD83)  
 Distance From River Centerline (ft)=  
 Ground Surface Elevation (ft NAVD88) =  
 Measurement Pt. Elevation (ft NAVD88) = 135.84  
 Site = Sniffen Bridge

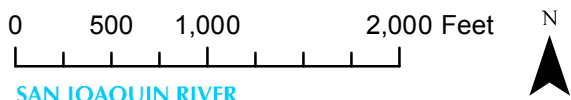
Habitat =  
 Protocol Reference =  
 Organization = CCID  
 Measurements:  
 1. Type = Measurement  
    Interval = Approx. Daily  
    Date Range =  
 2. Type =  
    Interval =  
    Date Range =  
 3. Type =  
    Interval =  
    Date Range =  
 Description:  
 Staff Gage

Datalogger Type =  
 HEC-RAS Cross-section =  
 Current Rating Curve =  
 Influences:

Notes:

\* = assumed value  
 bgs = below ground surface  
 NR = not recorded

Last Updated:  
 6/12/2012  
 Preliminary Data



# Monitoring Location SG-190.4



Reach = 3  
 River Mile = 194.4  
 X = -120.4558 Y = 36.8642  
 (Horizontal Datum is NAD83)  
 Distance From River Centerline (ft)=  
 Ground Surface Elevation (ft NAVD88) =  
 Measurement Pt. Elevation (ft NAVD88) = 136.272  
 Site = Trailer Park  
 Habitat =  
 Protocol Reference =  
 Organization = CCID  
 Measurements:  
 1. Type = Measurement  
    Interval = Approx. Daily  
    Date Range =  
 2. Type =  
    Interval =  
    Date Range =  
 3. Type =  
    Interval =  
    Date Range =  
 Description:  
 Staff Gage

Datalogger Type =  
 HEC-RAS Cross-section =  
 Current Rating Curve =  
 Influences:  
 Firebaugh Wasteway

Notes:

\* = assumed value  
 bgs = below ground surface  
 NR = not recorded

Last Updated:  
 6/12/2012  
 Preliminary Data

# Monitoring Location SG-194.4



Reach = 3  
 River Mile = 195.2  
 X = -120.4489 Y = 36.8583  
 (Horizontal Datum is NAD83)  
 Distance From River Centerline (ft)=  
 Ground Surface Elevation (ft NAVD88) =  
 Measurement Pt. Elevation (ft NAVD88) = 131.266  
 Site = Firebaugh Bridge  
 Habitat =  
 Protocol Reference =  
 Organization = CCID  
 Measurements:  
 1. Type = Measurement  
 Interval = Approx. Daily  
 Date Range =  
 2. Type =  
 Interval =  
 Date Range =  
 3. Type =  
 Interval =  
 Date Range =  
 Description:  
 Staff Gage

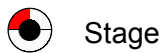
Datalogger Type =  
 HEC-RAS Cross-section =  
 Current Rating Curve =  
 Influences:  
 Firebaugh Wasteway

Notes:

\* = assumed value  
 bgs = below ground surface  
 NR = not recorded

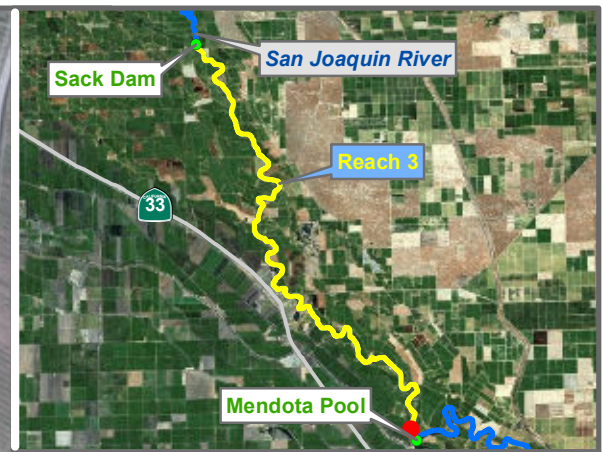
Last Updated:  
 6/12/2012  
 Preliminary Data

0 500 1,000 2,000 Feet



Stage

# Monitoring Location SG-195.2



Reach = 3  
 River Mile = 204.6  
 X = -120.3726 Y = 36.7881  
 (Horizontal Datum is NAD83)  
 Distance From River Centerline (ft)=  
 Ground Surface Elevation (ft NAVD88) =  
 Measurement Pt. Elevation (ft NAVD88) = 159.277  
 Site = Mendota Pool

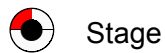
Habitat =  
 Protocol Reference =  
 Organization = CCID  
 Measurements:  
 1. Type = Measurement  
    Interval = Approx. Daily  
    Date Range =  
 2. Type =  
    Interval =  
    Date Range =  
 3. Type =  
    Interval =  
    Date Range =  
 Description:  
 Staff Gage

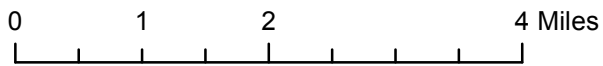
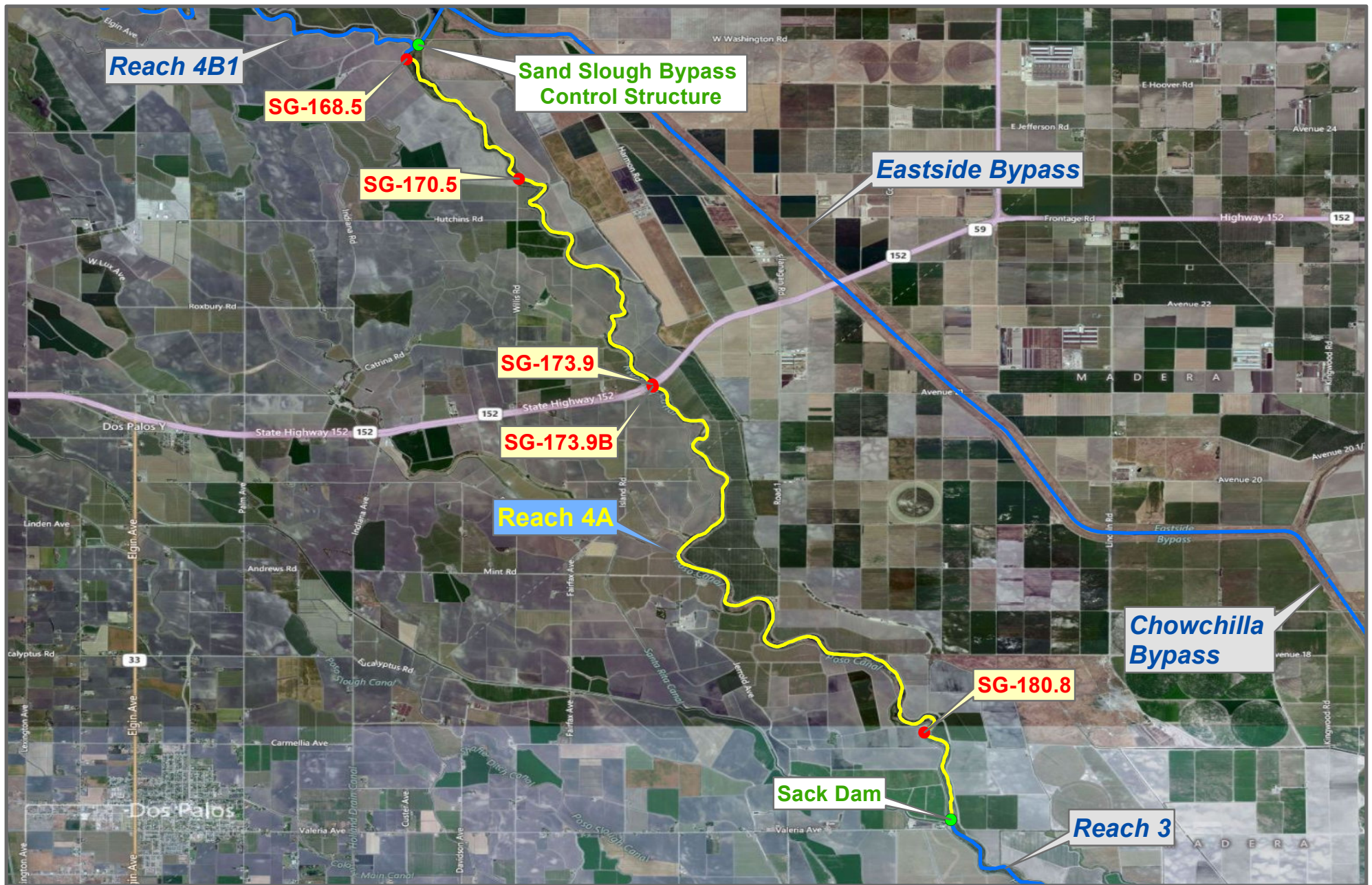
Datalogger Type =  
 HEC-RAS Cross-section =  
 Current Rating Curve =  
 Influences:  
 Mendota Pool Diversions

Notes:  
 \* = assumed value  
 bgs = below ground surface  
 NR = not recorded  
 Last Updated:  
 6/12/2012  
 Preliminary Data

**SG-204.6**

# Monitoring Location SG-204.6





**RECLAMATION**  
Managing Water in the West

## Reach 4A Stage Monitoring Locations

Preliminary Data

**SAN JOAQUIN RIVER**  
RESTORATION PROGRAM





**SG-168.5**

Reach = 4A  
 River Mile = 168.5  
 X = -120.5905 Y = 37.1100  
 (Horizontal Datum is NAD83)  
 Distance From River Centerline (ft) =  
 Ground Surface Elevation (ft NAVD88) =  
 Measurement Pt. Elevation (ft NAVD88) = 99.834  
 Site = End of Riverside

Merced County  
 Left Bank  
 Status = Existing

Habitat =  
 Protocol Reference =  
 Organization = CCID  
 Measurements:  
 1. Type = Measurement  
 Interval = Approx. Daily  
 Date Range =  
 2. Type =  
 Interval =  
 Date Range =  
 3. Type =  
 Interval =  
 Date Range =

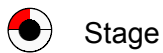
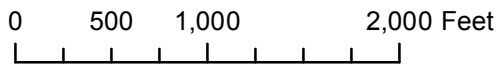
Description:  
 Staff Gage

Datalogger Type =  
 HEC-RAS Cross-section =  
 Current Rating Curve =  
 Influences:  
 Mariposa bypass, Sand Slough

Notes:

\* = assumed value  
 bgs = below ground surface  
 NR = not recorded

Last Updated:  
 6/12/2012  
 Preliminary Data



Stage

# Monitoring Location SG-168.5



Reach = 4A  
 River Mile = 170.5  
 X = -120.5719 Y = 37.0901  
 (*Horizontal Datum is NAD83*)  
 Distance From River Centerline (ft)=  
 Ground Surface Elevation (ft NAVD88) =  
 Measurement Pt. Elevation (ft NAVD88) = 98.156  
 Site = Willis Road

Merced County  
 Left Bank  
 Status = Existing

Habitat =  
 Protocol Reference =  
 Organization = CCID  
 Measurements:  
 1. Type = Measurement  
    Interval = Approx. Daily  
    Date Range =  
 2. Type =  
    Interval =  
    Date Range =  
 3. Type =  
    Interval =  
    Date Range =

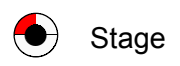
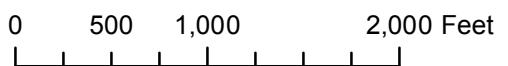
Description:  
 Staff Gage

Datalogger Type =  
 HEC-RAS Cross-section =  
 Current Rating Curve =  
 Influences:

Notes:

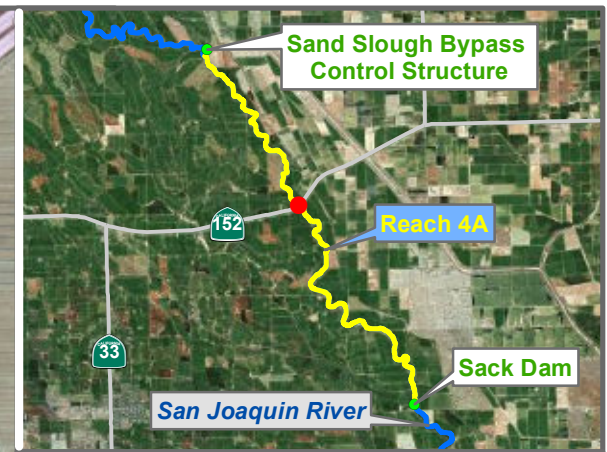
\* = assumed value  
 bgs = below ground surface  
 NR = not recorded

Last Updated:  
 6/12/2012  
 Preliminary Data



Stage

# Monitoring Location SG-170.5



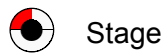
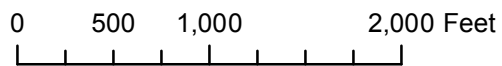
Reach = 4A  
 River Mile = 173.9  
 X = -120.5497 Y = 37.0560  
 (Horizontal Datum is NAD83)  
 Distance From River Centerline (ft)=  
 Ground Surface Elevation (ft NAVD88) =  
 Measurement Pt. Elevation (ft NAVD88) = 102.772  
 Site = Highway 152  
 Habitat =  
 Protocol Reference =  
 Organization = CCID  
 Measurements:  
 1. Type = Measurement  
 Interval = Approx. Daily  
 Date Range =  
 2. Type =  
 Interval =  
 Date Range =  
 3. Type =  
 Interval =  
 Date Range =  
 Description:  
 Staff Gage

Datalogger Type =  
 HEC-RAS Cross-section =  
 Current Rating Curve =  
 Influences:

Notes:

\* = assumed value  
 bgs = below ground surface  
 NR = not recorded

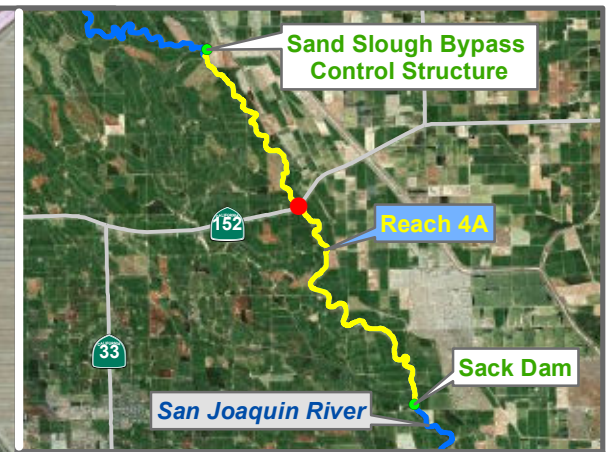
Last Updated:  
 6/12/2012  
 Preliminary Data



Stage

# Monitoring Location SG-173.9





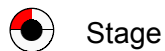
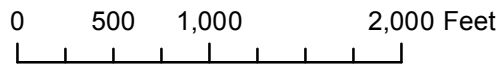
Reach = 4A  
 River Mile = 173.9  
 X = -120.5497 Y = 37.0556  
 (Horizontal Datum is NAD83)  
 Distance From River Centerline (ft)=  
 Ground Surface Elevation (ft NAVD88) =  
 Measurement Pt. Elevation (ft NAVD88) = 100.875  
 Site = Hwy 152 Bridge  
 Habitat =  
 Protocol Reference = ATR Appendix C  
 Organization = USBR  
 Measurements:  
 1. Type = Datalogger  
    Interval = Hourly  
    Date Range =  
 2. Type =  
    Interval =  
    Date Range =  
 3. Type =  
    Interval =  
    Date Range =  
 Description:  
 2 inch pipe

Datalogger Type = Solinst?  
 HEC-RAS Cross-section =  
 Current Rating Curve =  
 Influences:

Notes:

\* = assumed value  
 bgs = below ground surface  
 NR = not recorded

Last Updated:  
 6/12/2012  
 Preliminary Data



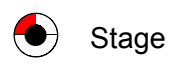
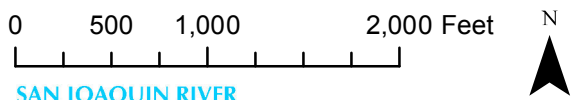
Stage

# Monitoring Location SG-173.9B



**SG-180.8**

Reach = 4A  
 River Mile = 180.8  
 X = -120.5045 Y = 36.9981  
 (*Horizontal Datum is NAD83*)  
 Distance From River Centerline (ft)=  
 Ground Surface Elevation (ft NAVD88) =  
 Measurement Pt. Elevation (ft NAVD88) = 112.016  
 Site = River LP  
 Habitat =  
 Protocol Reference =  
 Organization = CCID  
 Measurements:  
 1. Type = Measurement  
    Interval = Approx. Daily  
    Date Range =  
 2. Type =  
    Interval =  
    Date Range =  
 3. Type =  
    Interval =  
    Date Range =  
 Description:  
 Staff Gage  
  
 Datalogger Type =  
 HEC-RAS Cross-section =  
 Current Rating Curve =  
 Influences:  
 Arroyo Canal

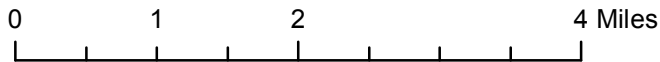
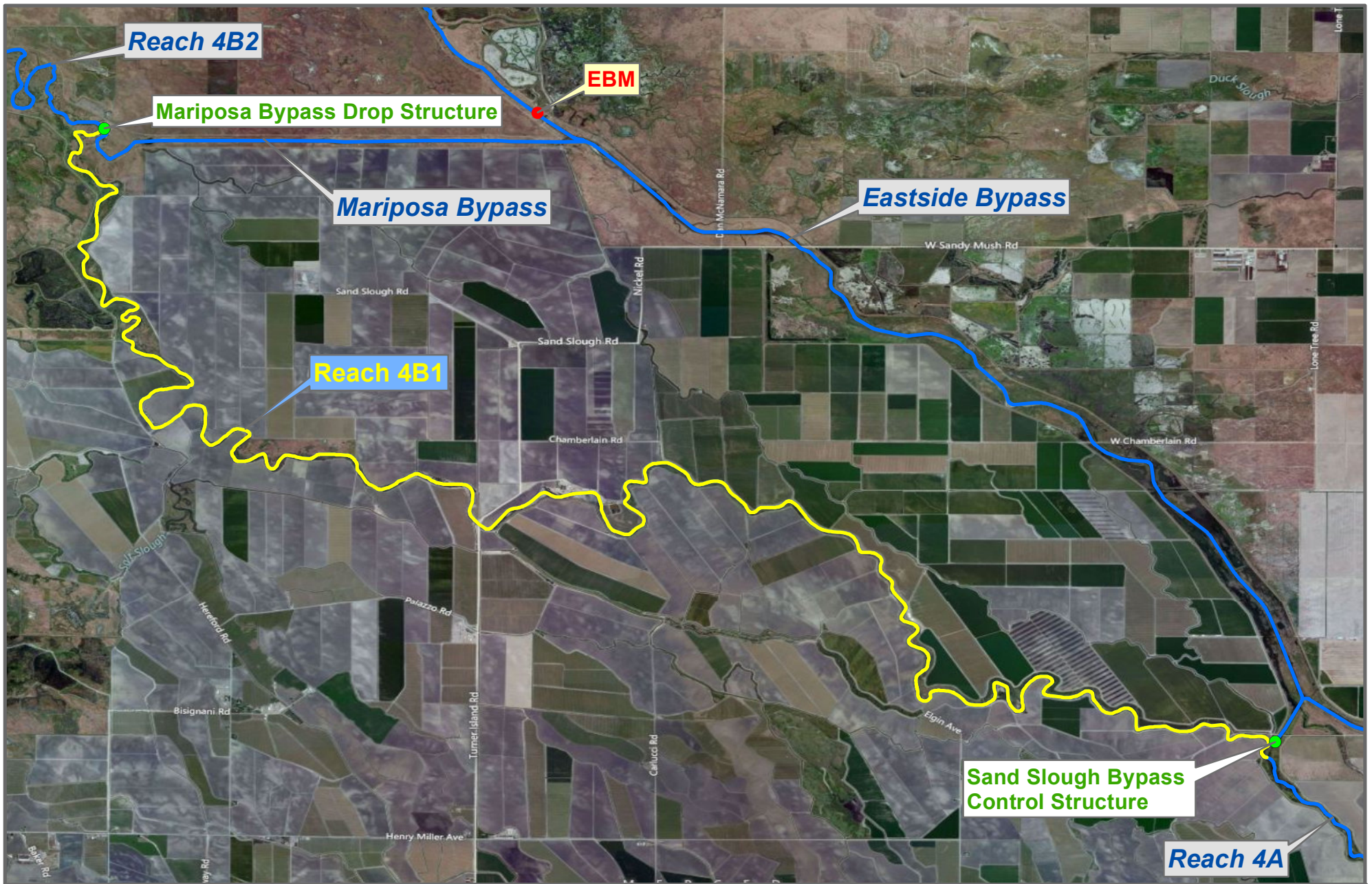


# Monitoring Location SG-180.8

Notes:

\* = assumed value  
 bgs = below ground surface  
 NR = not recorded

Last Updated:  
 6/12/2012  
 Preliminary Data



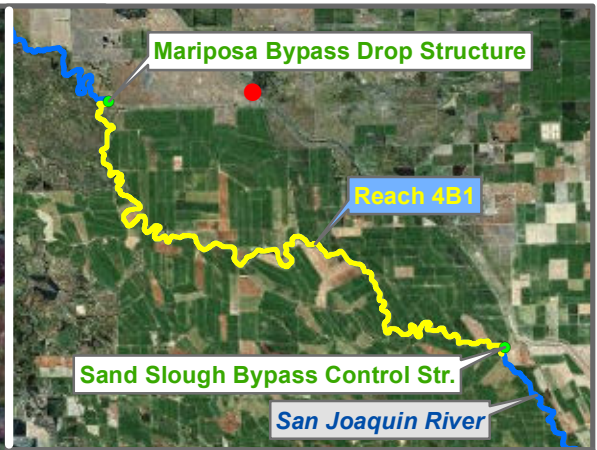
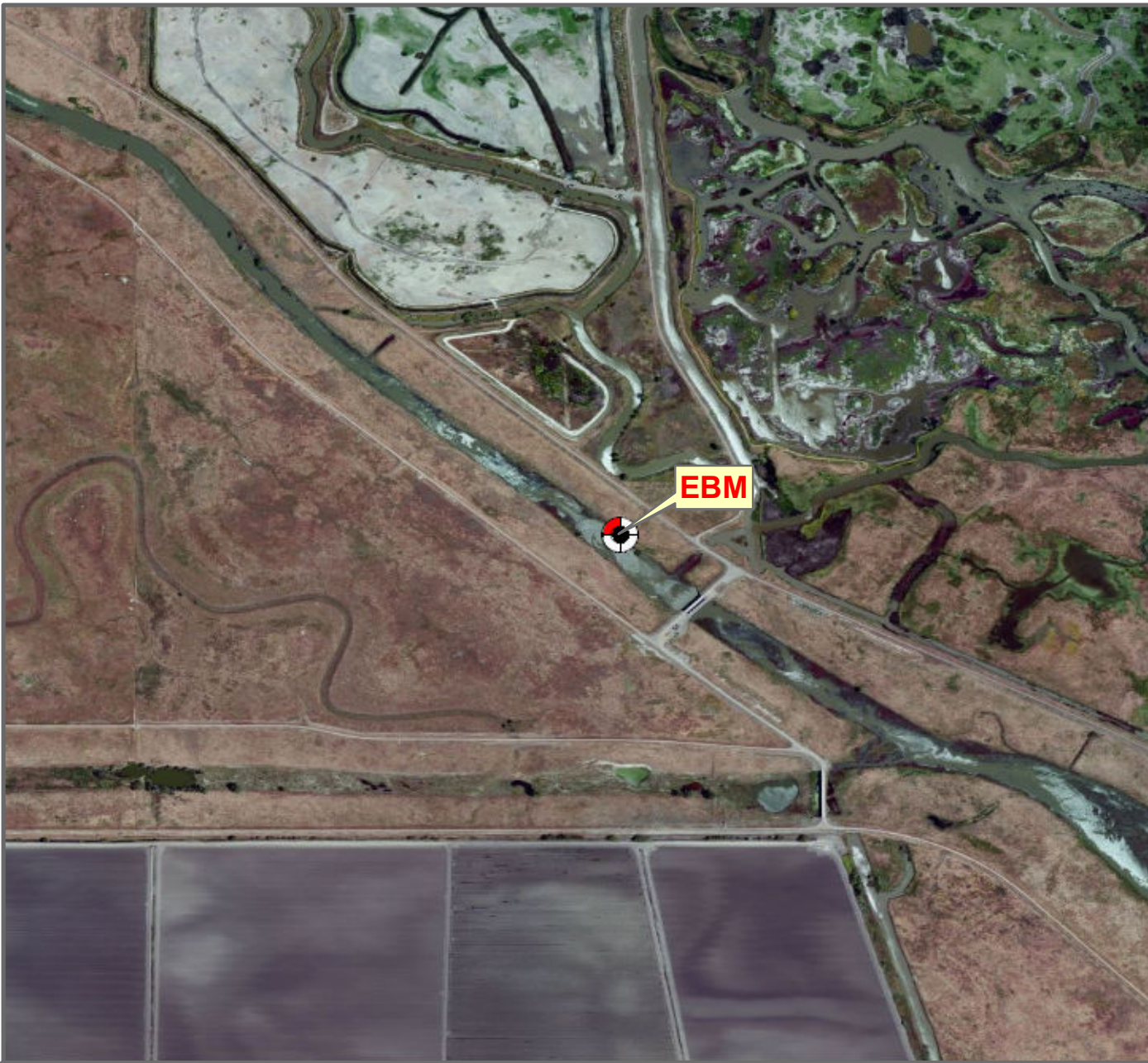
**RECLAMATION**  
Managing Water in the West

# Reach 4B1 Stage Monitoring Locations



Preliminary Data

Last Updated: 6/12/2012

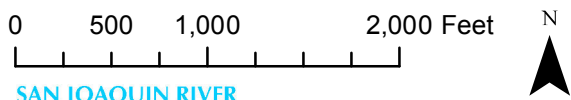


Reach = 4B1  
 River Mile = 146  
 X = -120.6983 Y = 37.2060  
 (*Horizontal Datum is NAD83*)  
 Distance From River Centerline (ft)=  
 Ground Surface Elevation (ft NAVD88) =  
 Measurement Pt. Elevation (ft NAVD88) = 106.75  
 Site = Eastside Bypass ds Mariposa Bypass  
 Habitat =  
 Protocol Reference = ATR Appendix C  
 Organization = USBR  
 Measurements:  
 1. Type = Datalogger  
    Interval = Hourly  
    Date Range =  
 2. Type =  
    Interval =  
    Date Range =  
 3. Type =  
    Interval =  
    Date Range =  
 Description:  
 2 inch pipe

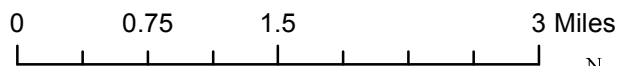
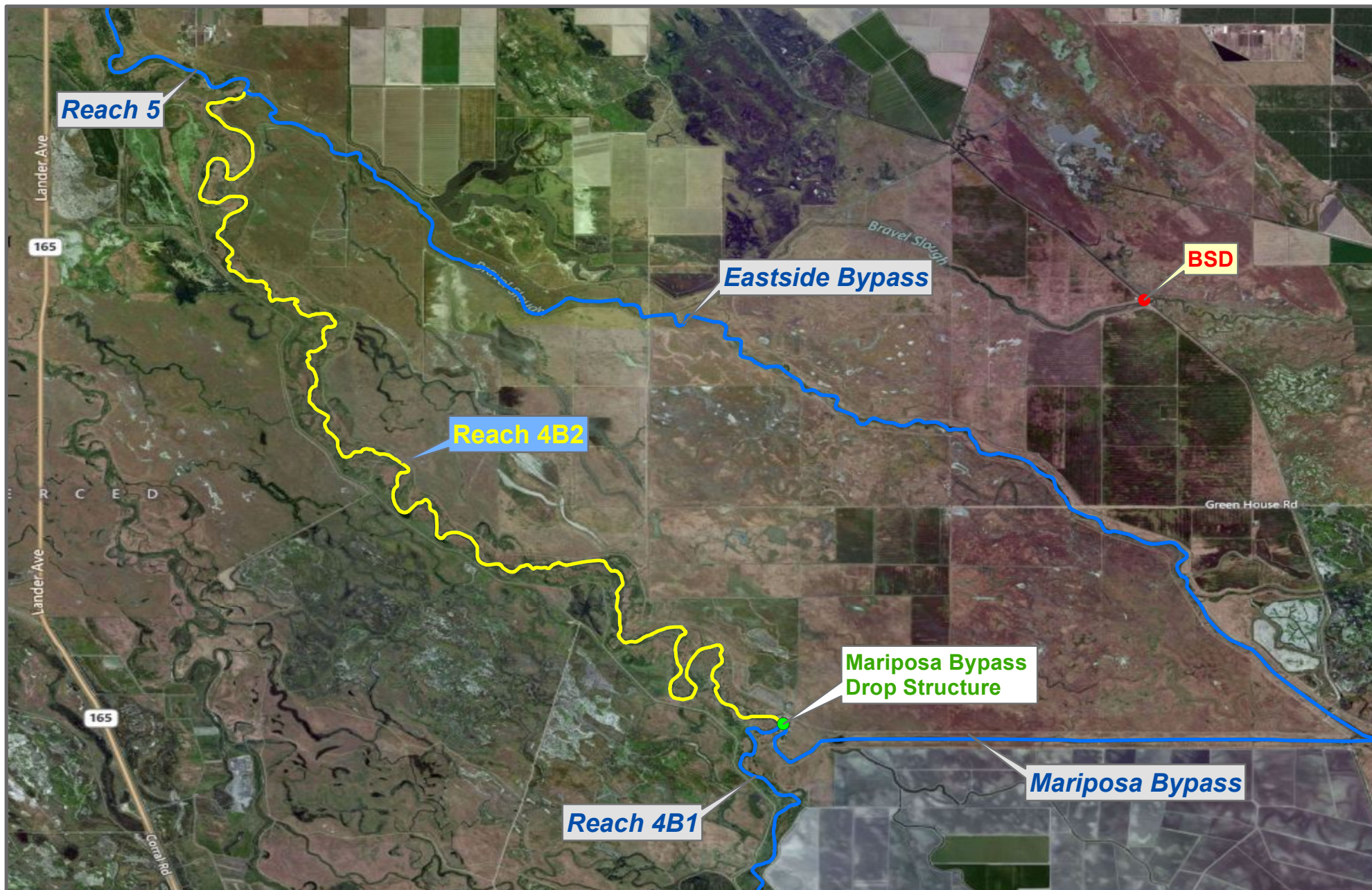
Datalogger Type = Solinst?  
 HEC-RAS Cross-section =  
 Current Rating Curve =  
 Influences:  
 East Side Irrigation Canal, mariposa bypass

Notes:

\* = assumed value  
 bgs = below ground surface  
 NR = not recorded  
 Last Updated:  
 6/12/2012  
 Preliminary Data



# Monitoring Location EBM

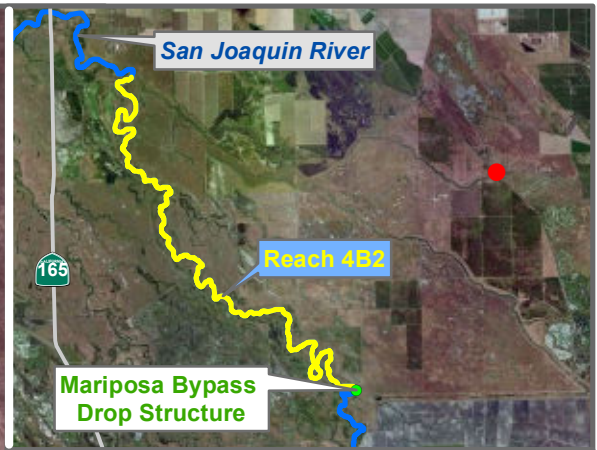
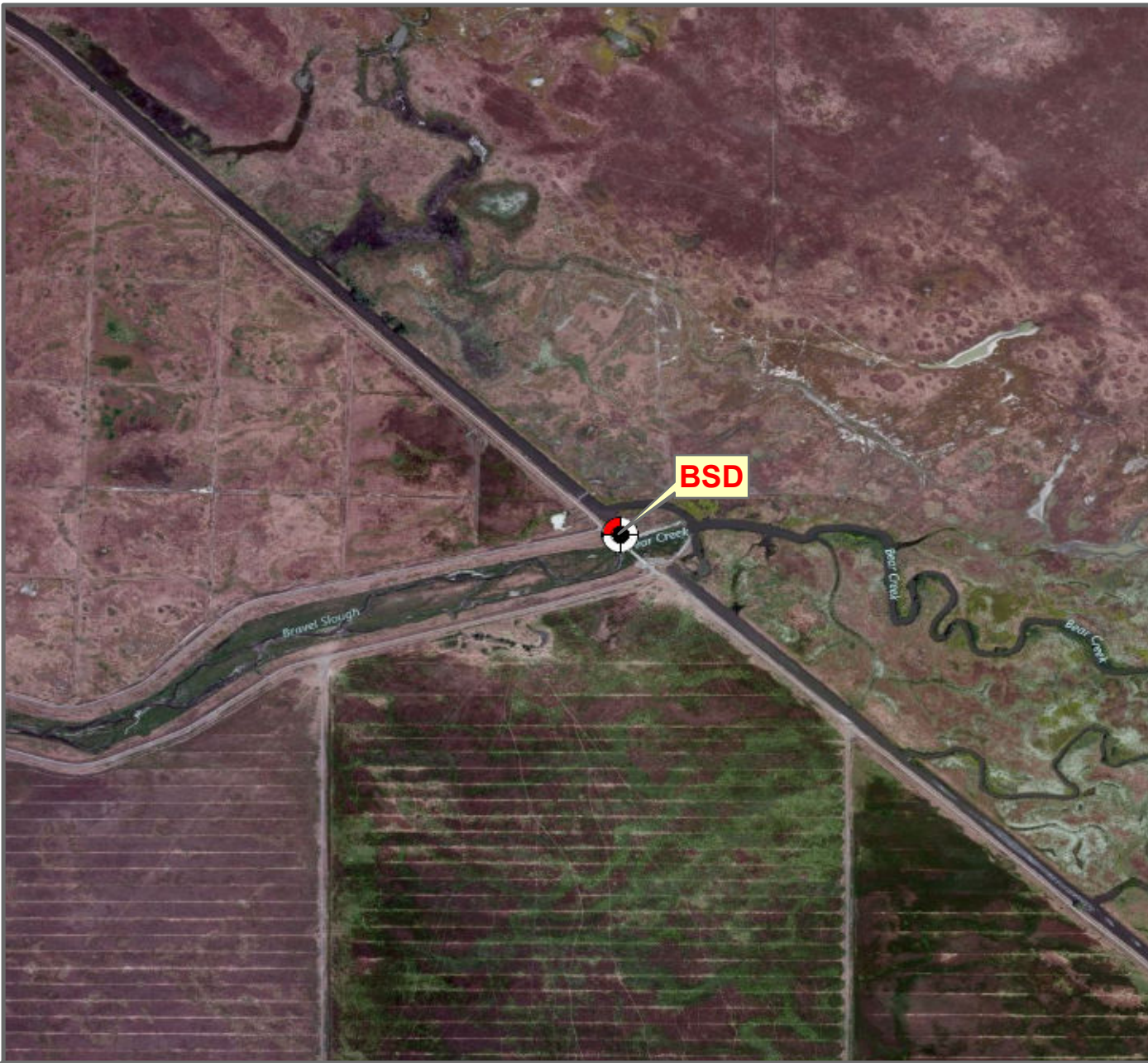


**RECLAMATION**  
Managing Water in the West

# Reach 4B2 Stage Monitoring Locations

Preliminary Data





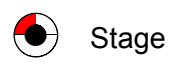
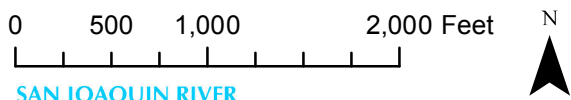
Reach = 4B2  
 River Mile =  
 X = -120.7194 Y = 37.2547  
 (Horizontal Datum is NAD83)  
 Distance From River Centerline (ft)=  
 Ground Surface Elevation (ft NAVD88) =  
 Measurement Pt. Elevation (ft NAVD88) =  
 Site = Bear Creek  
 Habitat =  
 Protocol Reference = ATR Appendix C  
 Organization = DWR  
 Measurements:  
 1. Type = Realtime  
    Interval = 15 min  
    Date Range =  
 2. Type =  
    Interval =  
    Date Range =  
 3. Type =  
    Interval =  
    Date Range =  
 Description:

Datalogger Type =  
 HEC-RAS Cross-section =  
 Current Rating Curve =  
 Influences:  
 East Side Irrigation Canal

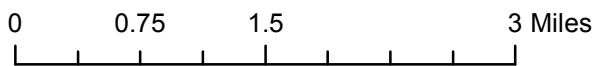
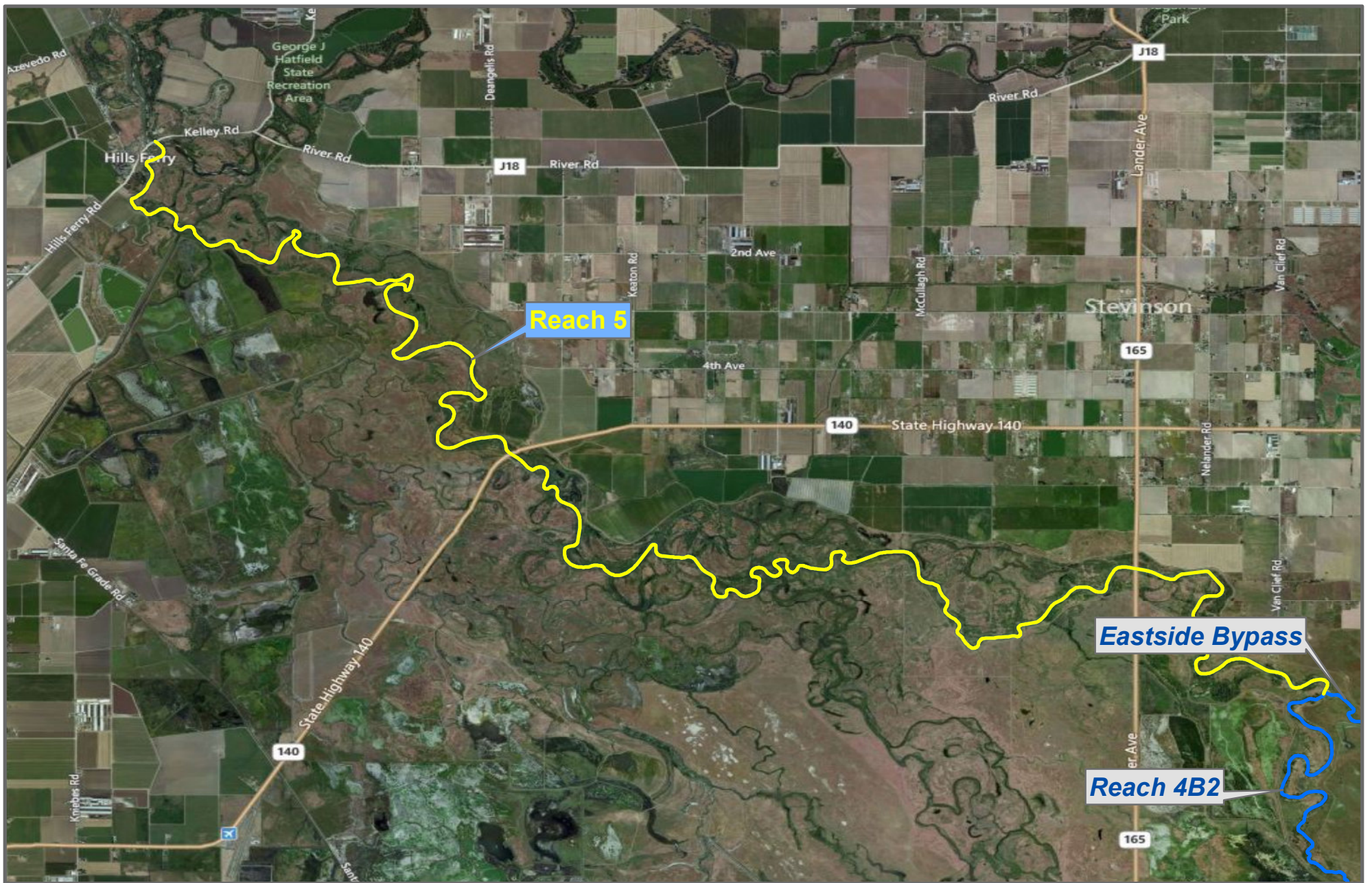
Notes:

\* = assumed value  
 bgs = below ground surface  
 NR = not recorded

Last Updated:  
 6/12/2012  
 Preliminary Data



# Monitoring Location BSD



**RECLAMATION**  
*Managing Water in the West*

# Reach 5 Stage Monitoring Locations

Preliminary Data

