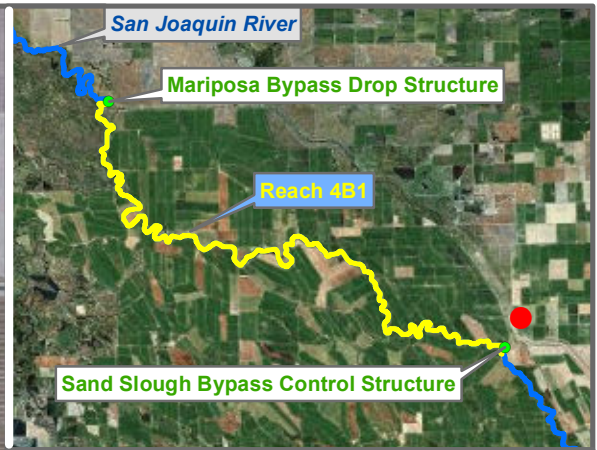


Reach 4B1 GW Monitoring Locations

Preliminary Data

RECLAMATION
Managing Water in the West





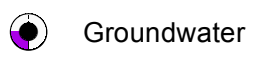
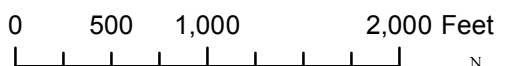
Reach = 4B1
 Merced County
 River Mile = 169
 Right Bank
 X = -120.5810 Y = 37.1228 Status = Tmp-Decom
 (Horizontal Datum is NAD83)
 Distance From River Centerline (ft)=
 Reference Elevation (ft NAVD88) =
 Site = lest
 Land Use =
 Protocol Reference = ATR App F Sec 2
 Agency = USBR
 Measurements:
 1. Type = Electronic Sounder Measurement
 Interval = Monthly
 Date Range = Currently Unavailable
 2. Type =
 Interval =
 Date Range =
 3. Type =
 Interval =
 Date Range =

Description:
 Hand Augered, temporary, no threshold

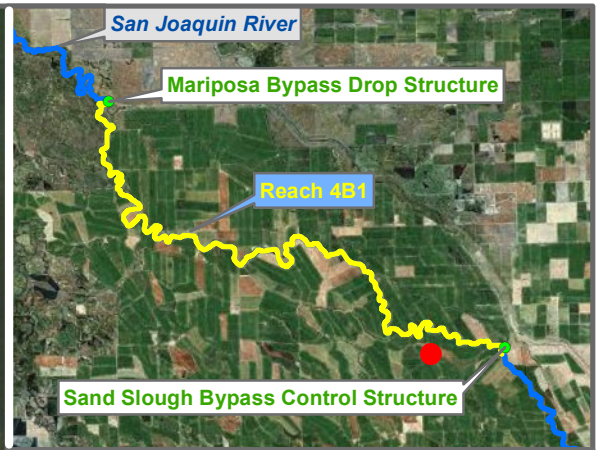
Root Depth (ft bgs) =
 GS Buffer (ft) =
 Screen Depth (ft bgs) =
 Capillary Rise (ft) =
 Historical GW level (ft bgs) = 50
 Field Threshold (ft bgs) =
 Threshold Elevation (ft NAVD88) = TBD

Influences:
 Mariposa Bypass

* = assumed value
 bgs = below ground surface
 NR = not recorded
 Last Updated:
 5/29/2012
 Preliminary Data



Monitoring Location ISB1



Reach = 4B1
 River Mile = 165.503790537
 X = -120.6215 Y = 37.1108
 (Horizontal Datum is NAD83)
 Distance From River (ft)= 2680
 Reference Elevation (ft NAVD88) = 102.7
 Site = San Juan Ranch
 Land Use = Annual Crops
 Protocol Reference = ATR App F Sec 2
 Agency = USBR
 Measurements:
 1. Type = Electronic Sounder Measurement
 Interval = Monthly
 Date Range = Currently Unavailable
 2. Type = Datalogger
 Interval = Hourly
 Date Range = Currently Unavailable
 3. Type =
 Interval =
 Date Range =

Description:
 2 inch PVC casing AG

Root Depth (ft bgs) = 4.0
 GS Buffer (ft) = 4.6
 Screen Depth (ft bgs) = 13.8 - 28.8
 Capillary Rise (ft) = 1.0
 Historical GW level (ft bgs) = 50
 Field Threshold (ft bgs) = 5
 Threshold Elevation (ft NAVD88) = 93.2

Influences:
 Salt Slough

* = assumed value
 bgs = below ground surface
 NR = not recorded

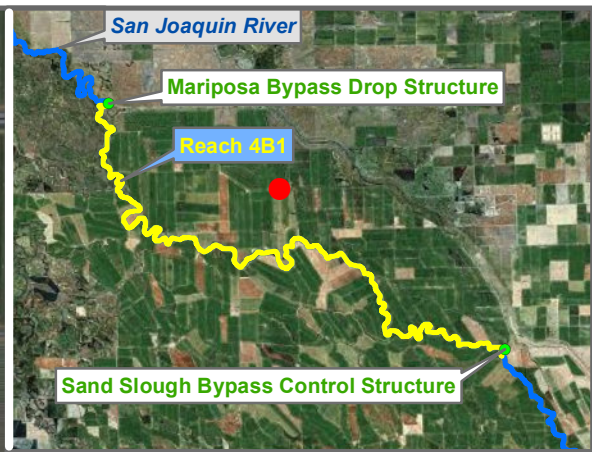
Last Updated:
 5/24/2012
 Preliminary Data

0 500 1,000 2,000 Feet



Groundwater

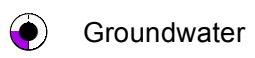
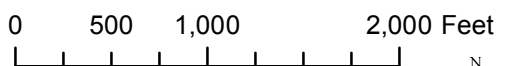
Monitoring Location MW-10-100



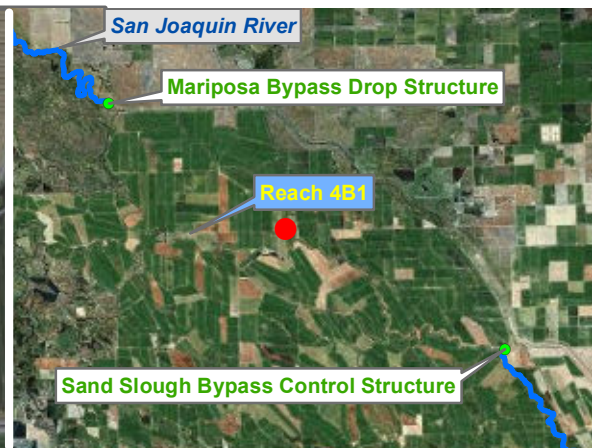
Reach = 4B1
 River Mile = 160
 X = -120.6874 Y = 37.1715
 (Horizontal Datum is NAD83)
 Distance From River (ft) = 6708
 Reference Elevation (ft NAVD88) = 95.7
 Site = Bowles
 Land Use = Annual Crops
 Protocol Reference = ATR App F Sec 2
 Agency = USBR
 Measurements:
 1. Type = Electronic Sounder Measurement
 Interval = Monthly
 Date Range = 5/19/2010 - 1/5/2012
 2. Type = Datalogger
 Interval = Hourly
 Date Range = 9/10/2010 - 1/18/2012
 3. Type =
 Interval =
 Date Range =

Merced County
 Right Bank
 Status = Existing
 Description:
 2 inch PVC casing AG
 Root Depth (ft bgs) = 4.0
 GS Buffer (ft) = 2.4
 Screen Depth (ft bgs) = 14.1 - 29.1
 Capillary Rise (ft) = 1.0
 Historical GW level (ft bgs) = 50
 Field Threshold (ft bgs) = 5
 Threshold Elevation (ft NAVD88) = 88.3

Influences:
 Sand Slough, Well
 Last Updated:
 5/23/2012
 Preliminary Data
 * = assumed value
 bgs = below ground surface
 NR = not recorded



Monitoring Location MW-10-102



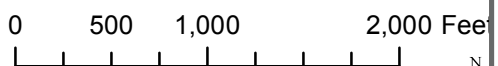
Reach = 4B1
 River Mile = 160
 X = -120.6851 Y = 37.1573
 (Horizontal Datum is NAD83)
 Distance From River (ft)= 1698
 Reference Elevation (ft NAVD88) = 99.1
 Site = Bowles
 Land Use = Annual Crops
 Protocol Reference = ATR App F Sec 2
 Agency = USBR
 Measurements:
 1. Type = Electronic Sounder Measurement
 Interval = Monthly
 Date Range = Currently Unavailable
 2. Type = Datalogger
 Interval = Hourly
 Date Range = Currently Unavailable
 3. Type =
 Interval =
 Date Range =

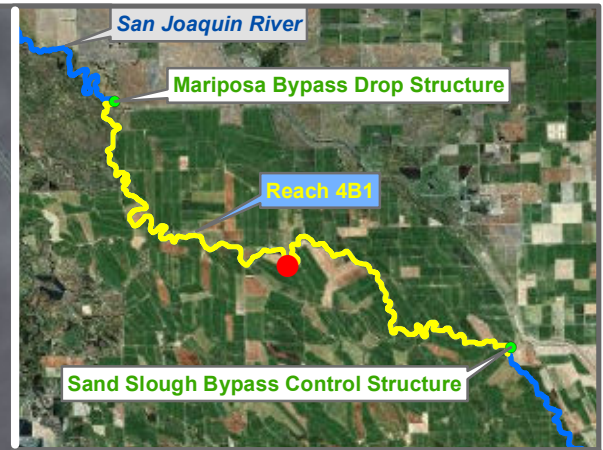
Merced County
 Right Bank
 Status = Existing
 Description:
 2 inch PVC casing AG
 Root Depth (ft bgs) = 4.0
 GS Buffer (ft) = 4.6
 Screen Depth (ft bgs) = 18.8 - 38.8
 Capillary Rise (ft) = 1.0
 Historical GW level (ft bgs) = 50
 Field Threshold (ft bgs) = 5
 Threshold Elevation (ft NAVD88) = 89.5

Influences:
 Canal, Well
 Last Updated:
 5/24/2012
 Preliminary Data
 * = assumed value
 bgs = below ground surface
 NR = not recorded

MW-10-103

Monitoring Location MW-10-103





Reach = 4B1
 River Mile = 158.9
 X = -120.6871 Y = 37.1431
 (Horizontal Datum is NAD83)
 Distance From River (ft) = 226
 Reference Elevation (ft NAVD88) = 96.7
 Site = Bowles
 Land Use = Assumed Annual Crop
 Protocol Reference = ATR App F Sec 2
 Agency = USBR
 Measurements:
 1. Type = Electronic Sounder Measurement
 Interval = Monthly
 Date Range = 5/20/2010 - 1/5/2012
 2. Type = Datalogger
 Interval = Hourly
 Date Range = 9/10/2010 - 1/18/2012
 3. Type =
 Interval =
 Date Range =

Description:
 2 inch PVC casing AG

Root Depth (ft bgs) = 4.0
 GS Buffer (ft) = 1.4
 Screen Depth (ft bgs) = 14.0 - 29.0
 Capillary Rise (ft) = 1.0
 Historical GW level (ft bgs) = 50
 Field Threshold (ft bgs) = 5
 Threshold Elevation (ft NAVD88) = 90.3

Influences:
 SJR

* = assumed value
 bgs = below ground surface
 NR = not recorded

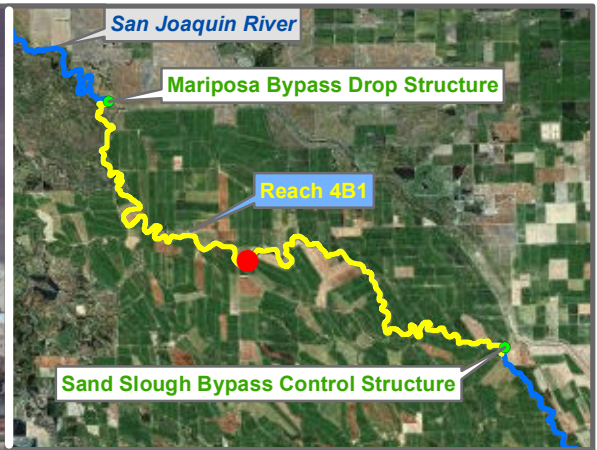
Last Updated:
 5/23/2012
 Preliminary Data

0 500 1,000 2,000 Feet



Groundwater

Monitoring Location MW-10-105



Reach = 4B1
 River Mile = 157.5
 X = -120.7025 Y = 37.1455
 (Horizontal Datum is NAD83)
 Distance From River (ft) = 347
 Reference Elevation (ft NAVD88) = 95.3
 Site = Philip Ernest Bowles
 Land Use = Assumed Annual Crop
 Protocol Reference = ATR App F Sec 2
 Agency = USBR

Merced County
 Left Bank
 Status = Existing

- Measurements:
- Type = Electronic Sounder Measurement
Interval = Monthly
Date Range = Not Available
 - Type =
Interval =
Date Range =
 - Type =
Interval =
Date Range =

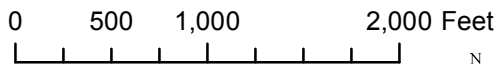
Description:
2 inch PVC casing AG

Root Depth (ft bgs) = 4.0
 GS Buffer (ft) = 2.0
 Screen Depth (ft bgs) = 8.0 - 23.0
 Capillary Rise (ft) = 1.0*
 Historical GW level (ft bgs) = 50
 Field Threshold (ft bgs) = 5
 Threshold Elevation (ft NAVD88) = 91.2

Influences:
SJR

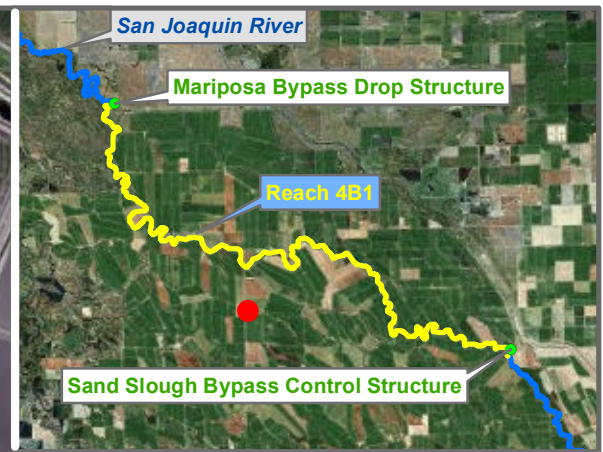
Last Updated:
 5/24/2012
 Preliminary Data

* = assumed value
 bgs = below ground surface
 NR = not recorded



Groundwater

Monitoring Location MW-10-106



Reach = 4B1
 River Mile = 157.3
 X = -120.7053 Y = 37.1285
 (Horizontal Datum is NAD83)
 Distance From River (ft) = 5668
 Reference Elevation (ft NAVD88) = 96
 Site = Bowles
 Land Use = Assumed Annual Crop
 Protocol Reference = ATR App F Sec 2
 Agency = USBR
 Measurements:
 1. Type = Electronic Sounder Measurement
 Interval = Monthly
 Date Range = 5/20/2010 - 1/5/2012
 2. Type = Datalogger
 Interval = Hourly
 Date Range = 9/10/2010 - 1/18/2012
 3. Type =
 Interval =
 Date Range =

Description:
 2 inch PVC casing AG

Root Depth (ft bgs) = 4.0
 GS Buffer (ft) = 2.7
 Screen Depth (ft bgs) = 14.1 - 29.1
 Capillary Rise (ft) = 1.0
 Historical GW level (ft bgs) = 50
 Field Threshold (ft bgs) = 5
 Threshold Elevation (ft NAVD88) = 88.3

Influences:
 Poso Drain, Levee Drain, Salt slough

* = assumed value
 bgs = below ground surface
 NR = not recorded

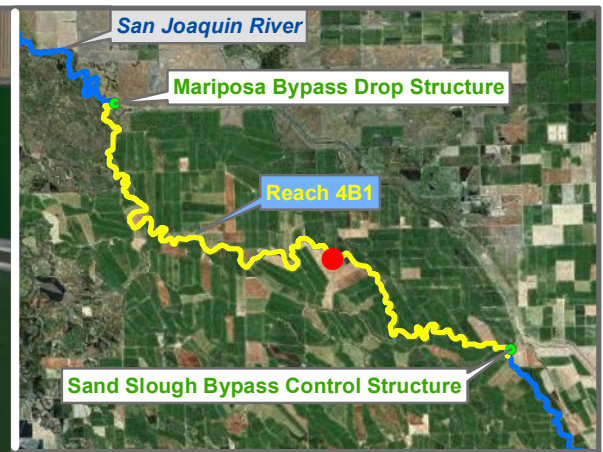
Last Updated:
 5/23/2012
 Preliminary Data

0 500 1,000 2,000 Feet



Groundwater

Monitoring Location MW-10-107



Reach = 4B1
 River Mile = 161.1
 X = -120.6671 Y = 37.1461
 (Horizontal Datum is NAD83)
 Distance From River (ft) = 202
 Reference Elevation (ft NAVD88) = 97
 Site = Bowles
 Land Use = Assumed Annual Crop
 Protocol Reference = ATR App F Sec 2
 Agency = USBR

Merced County
 Left Bank
 Status = Existing

Measurements:

1. Type = Electronic Sounder Measurement
Interval = Monthly
Date Range = Currently Unavailable
2. Type =
Interval =
Date Range =
3. Type =
Interval =
Date Range =

Description:

2 inch PVC casing AG

Root Depth (ft bgs) = 4.0
 GS Buffer (ft) = 1.7
 Screen Depth (ft bgs) = 20.0 - 30.0
 Capillary Rise (ft) = 1.0*
 Historical GW level (ft bgs) = 50
 Field Threshold (ft bgs) = 5
 Threshold Elevation (ft NAVD88) = 93.0

Influences:
 SJR

Last Updated:
 5/24/2012

* = assumed value
 bgs = below ground surface
 NR = not recorded

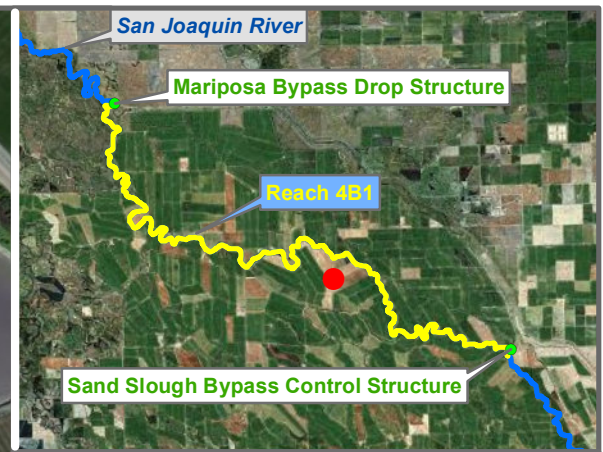
Preliminary Data

0 500 1,000 2,000 Feet



Groundwater

Monitoring Location MW-10-108



Reach = 4B1 Merced County
 River Mile = 162 Left Bank
 X = -120.6668 Y = 37.1389 Status = Existing
 (Horizontal Datum is NAD83)

Distance From River (ft)= 2753
 Reference Elevation (ft NAVD88) = 98.5
 Site = Bowles
 Land Use = Assumed Annual Crop
 Protocol Reference = ATR App F Sec 2
 Agency = USBR

Measurements:
 1. Type = Electronic Sounder Measurement
 Interval = Monthly
 Date Range = Currently Unavailable
 2. Type =
 Interval =
 Date Range =
 3. Type =
 Interval =
 Date Range =

Description:
 2 inch PVC casing AG

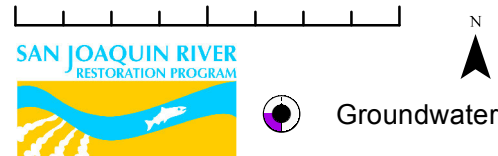
Root Depth (ft bgs) = 4.0
 GS Buffer (ft) = 1.6
 Screen Depth (ft bgs) = 20.0 - 30.0
 Capillary Rise (ft) = 1.0*
 Historical GW level (ft bgs) = 50
 Field Threshold (ft bgs) = 5
 Threshold Elevation (ft NAVD88) = 94.7

Influences:
 -

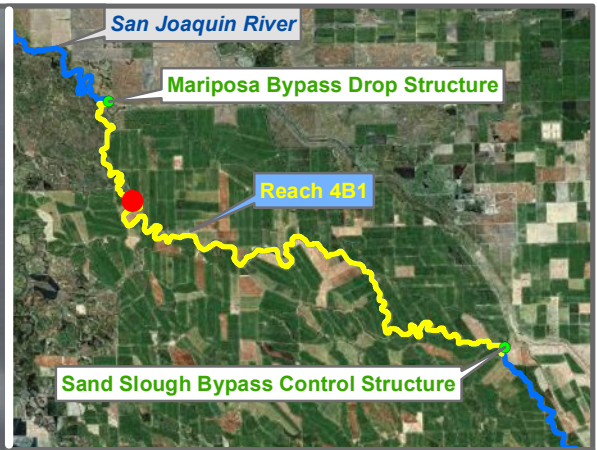
Last Updated:
 5/24/2012
 Preliminary Data

* = assumed value
 bgs = below ground surface
 NR = not recorded

0 500 1,000 2,000 Feet



Monitoring Location MW-10-109



MW-10-110

Reach = 4B1
 River Mile = 151.4
 X = -120.7531 Y = 37.1680
 (Horizontal Datum is NAD83)
 Distance From River (ft) = 94
 Reference Elevation (ft NAVD88) = 92.4
 Site = Bowles
 Land Use = Assumed Annual Crop
 Protocol Reference = ATR App F Sec 2
 Agency = USBR

Merced County
 Left Bank
 Status = Existing

Measurements:

1. Type = Electronic Sounder Measurement
 Interval = Monthly
 Date Range = Currently Unavailable
2. Type =
 Interval =
 Date Range =
3. Type =
 Interval =
 Date Range =

Description:

2 inch PVC casing AG

Root Depth (ft bgs) = 4.0
 GS Buffer (ft) = 1.8
 Screen Depth (ft bgs) = 10.0 - 25.0
 Capillary Rise (ft) = 1.0*
 Historical GW level (ft bgs) = 50
 Field Threshold (ft bgs) = 5
 Threshold Elevation (ft NAVD88) = 88.1

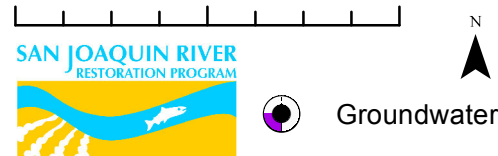
Influences:
 SJR

Last Updated:
 5/24/2012

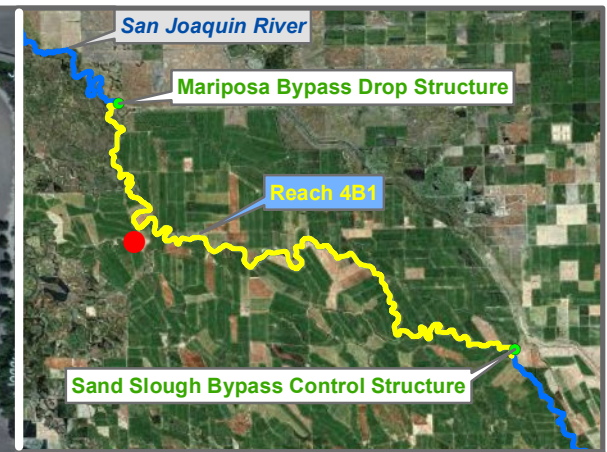
* = assumed value
 bgs = below ground surface
 NR = not recorded

Preliminary Data

0 500 1,000 2,000 Feet



Monitoring Location MW-10-110



Reach = 4B1
 River Mile = 154
 X = -120.7573 Y = 37.1541
 (Horizontal Datum is NAD83)
 Distance From River (ft) = 1913
 Reference Elevation (ft NAVD88) = 90.5
 Site = Bowles
 Land Use = Assumed Annual Crop
 Protocol Reference = ATR App F Sec 2
 Agency = USBR

Merced County
 Left Bank
 Status = Existing

Measurements:

1. Type = Electronic Sounder Measurement
Interval = Monthly
Date Range = Currently Unavailable
2. Type =
Interval =
Date Range =
3. Type =
Interval =
Date Range =

Description:

2 inch PVC casing AG

Root Depth (ft bgs) = 4.0
 GS Buffer (ft) = 1.8
 Screen Depth (ft bgs) = 8.0 - 23.0
 Capillary Rise (ft) = 1.0*
 Historical GW level (ft bgs) = 50
 Field Threshold (ft bgs) = 5
 Threshold Elevation (ft NAVD88) = 86.4

Influences:

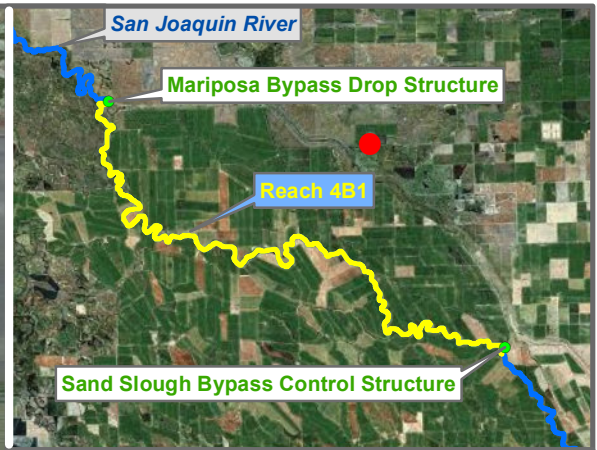
Drain, Island Canal

0 500 1,000 2,000 Feet



Groundwater

Monitoring Location MW-10-111



Reach = 4B1
 River Mile = 161
 X = -120.6464 Y = 37.1861
 (Horizontal Datum is NAD83)
 Distance From River (ft) = 2785
 Reference Elevation (ft NAVD88) = 103.6
 Site = Refuge
 Land Use = Assumed Annual Crop
 Protocol Reference = ATR App F Sec 2
 Agency = USBR
 Measurements:
 1. Type = Electronic Sounder Measurement
 Interval = Monthly
 Date Range = Currently Unavailable
 2. Type =
 Interval =
 Date Range =
 3. Type =
 Interval =
 Date Range =

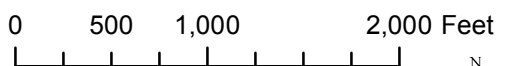
Description:
 2 inch PVC casing FM

 Root Depth (ft bgs) = 4.0
 GS Buffer (ft) = 0.0*
 Screen Depth (ft bgs) = 20.0 - 30.0
 Capillary Rise (ft) = 1.0*
 Historical GW level (ft bgs) = 50
 Field Threshold (ft bgs) = 5
 Threshold Elevation (ft NAVD88) = 98.2

Influences:
 Well

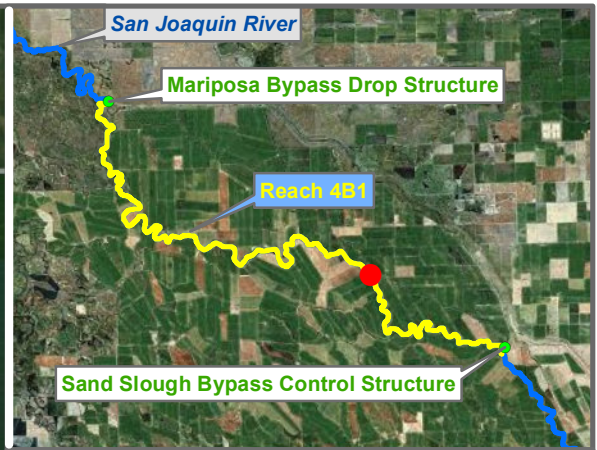
Last Updated:
 5/24/2012
 Preliminary Data

 * = assumed value
 bgs = below ground surface
 NR = not recorded



Monitoring Location

MW-10-112



Reach = 4B1
 River Mile = 162.5
 X = -120.6478 Y = 37.1395
 (Horizontal Datum is NAD83)
 Distance From River (ft) = 152
 Reference Elevation (ft NAVD88) = 104.2
 Site = Bowles
 Land Use = Assumed Annual Crop
 Protocol Reference = ATR App F Sec 2
 Agency = USBR
 Measurements:
 1. Type = Electronic Sounder Measurement
 Interval = Monthly
 Date Range = Currently Unavailable
 2. Type =
 Interval =
 Date Range =
 3. Type =
 Interval =
 Date Range =

Description:
 2 inch PVC casing AG

Root Depth (ft bgs) = 4.0
 GS Buffer (ft) = 4.5
 Screen Depth (ft bgs) = 7.5 - 17.5
 Capillary Rise (ft) = 1.0*
 Historical GW level (ft bgs) = 50
 Field Threshold (ft bgs) = 5
 Threshold Elevation (ft NAVD88) = 94.1

Influences:
 SJR

Last Updated:
 5/24/2012
 Preliminary Data

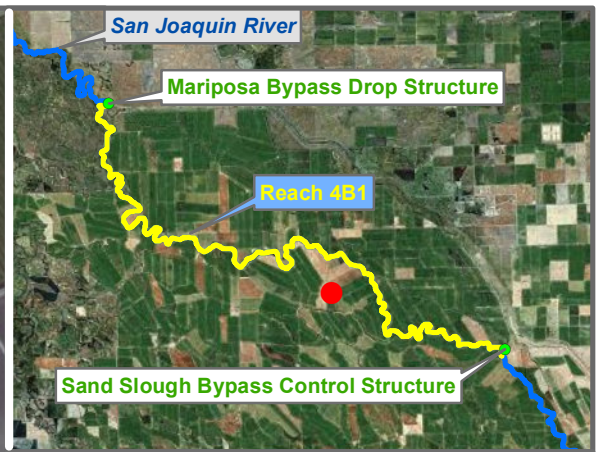
* = assumed value
 bgs = below ground surface
 NR = not recorded

0 500 1,000 2,000 Feet



Groundwater

Monitoring Location MW-10-113



Reach = 4B1
 River Mile = 162.5
 X = -120.6651 Y = 37.1339
 Merced County
 Left Bank
 Status = Existing
(Horizontal Datum is NAD83)

Distance From River (ft)= 4499
 Reference Elevation (ft NAVD88) = 99.5
 Site = Bowles
 Land Use = Assumed Annual Crop
 Protocol Reference = ATR App F Sec 2
 Agency = USBR

Measurements:
 1. Type = Electronic Sounder Measurement
 Interval = Monthly
 Date Range = Currently Unavailable
 2. Type =
 Interval =
 Date Range =
 3. Type =
 Interval =
 Date Range =

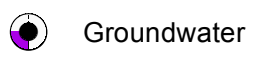
Description:
 2 inch PVC casing AG

Root Depth (ft bgs) = 4.0
 GS Buffer (ft) = 1.9
 Screen Depth (ft bgs) = 13.0 - 28.0
 Capillary Rise (ft) = 1.0*
 Historical GW level (ft bgs) = 50
 Field Threshold (ft bgs) = 5
 Threshold Elevation (ft NAVD88) = 95.4

Influences:
 -

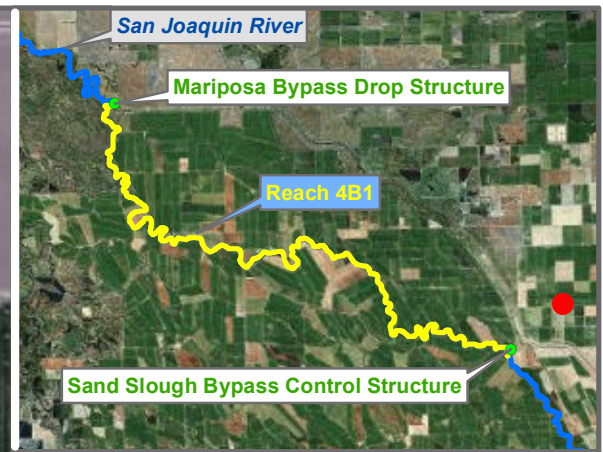
Last Updated:
 5/24/2012
 Preliminary Data

* = assumed value
 bgs = below ground surface
 NR = not recorded



Monitoring Location

MW-10-114



Reach = 4B1
 River Mile = 170
 X = -120.5647 Y = 37.1278
 (Horizontal Datum is NAD83)
 Distance From River Centerline (ft)=
 Reference Elevation (ft NAVD88) = 104.68
 Site = El Nido Road
 Land Use = Assumed Annual Crop
 Protocol Reference = ATR App F Sec 2
 Agency = USBR
 Measurements:
 1. Type = Electronic Sounder Measurement
 Interval = Monthly
 Date Range = Currently Unavailable
 2. Type =
 Interval =
 Date Range =
 3. Type =
 Interval =
 Date Range =

Description:
 2 inch PVC casing FM

Root Depth (ft bgs) = 4.0
 GS Buffer (ft) = 0.0*
 Screen Depth (ft bgs) = 18.0 - 28.0
 Capillary Rise (ft) = 1.0*
 Historical GW level (ft bgs) = 50
 Field Threshold (ft bgs) = 5
 Threshold Elevation (ft NAVD88) = 99.5

Influences:

-

* = assumed value
 bgs = below ground surface
 NR = not recorded

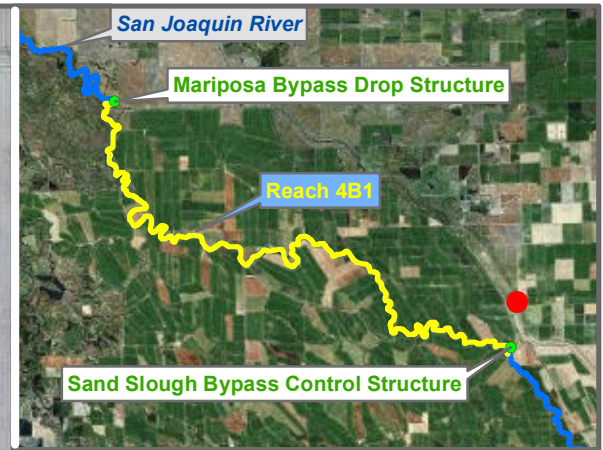
Last Updated:
 5/29/2012
 Preliminary Data

0 500 1,000 2,000 Feet



Groundwater

Monitoring Location MW-10-116

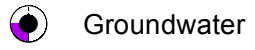


Reach = 4B1
 River Mile = 167.7
 X = -120.5849 Y = 37.1284
 (*Horizontal Datum is NAD83*)
 Distance From River (ft) = 931
 Reference Elevation (ft NAVD88) = 101.3
 Site = lest
 Land Use = Pistachios
 Protocol Reference = ATR App F Sec 2
 Agency = USBR
 Measurements:
 1. Type = Electronic Sounder Measurement
 Interval = Weekly - Priority
 Date Range = 5/3/2010 - 1/5/2012
 2. Type = Realtime - W90
 Interval = Hourly
 Date Range = 5/3/2010 - 1/18/2012
 3. Type =
 Interval =
 Date Range =
 Description:
 2 inch PVC casing AG
 Root Depth (ft bgs) = 6.0
 GS Buffer (ft) = -0.8
 Screen Depth (ft bgs) = 10-25
 Capillary Rise (ft) = 1.0
 Historical GW level (ft bgs) = 50
 Field Threshold (ft bgs) = 7
 Threshold Elevation (ft NAVD88) = 95.0
 Influences:
 Mariposa Bypass
 Last Updated:
 5/23/2012
 Preliminary Data
 * = assumed value
 bgs = below ground surface
 NR = not recorded

MW-10-90

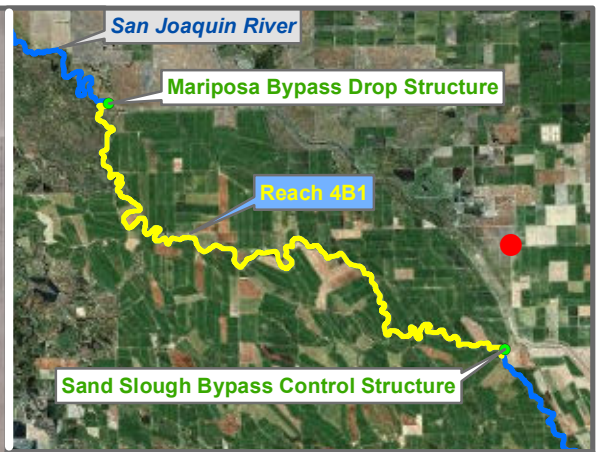
ISB1

0 500 1,000 2,000 Feet



Monitoring Location

MW-10-90



MW-10-94

Reach = 4B1 Merced County
 River Mile = 166.7 Right Bank
 X = -120.5847 Y = 37.1495 Status = Existing
 (Horizontal Datum is NAD83)

Distance From River (ft)= 4603
 Reference Elevation (ft NAVD88) = 101.6
 Site = lest
 Land Use = Pistachios
 Protocol Reference = ATR App F Sec 2
 Agency = USBR

- Measurements:
1. Type = Electronic Sounder Measurement
 Interval = Weekly - Priority
 Date Range = 5/3/2010 - 1/18/2012
 2. Type = Datalogger
 Interval = Hourly
 Date Range = 5/3/2010 - 1/18/2012
 3. Type =
 Interval =
 Date Range =

Description:
 2 inch PVC casing AG

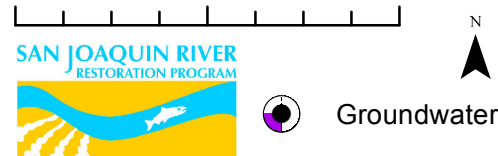
Root Depth (ft bgs) = 6.0
 GS Buffer (ft) = 0.0
 Screen Depth (ft bgs) = 9.8 - 24.8
 Capillary Rise (ft) = 1.0
 Historical GW level (ft bgs) = 50
 Field Threshold (ft bgs) = 7
 Threshold Elevation (ft NAVD88) = 95.6

Influences:
 -

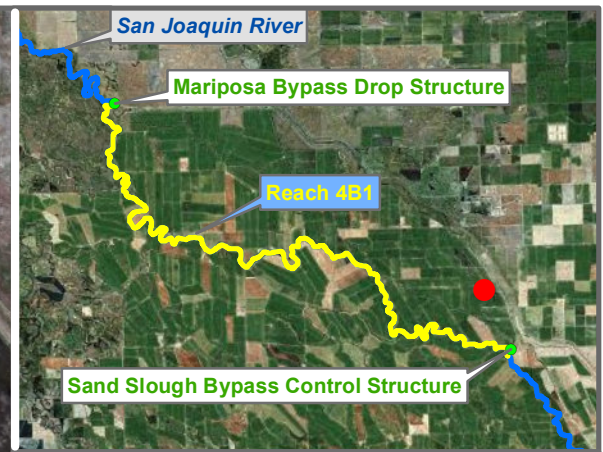
* = assumed value
 bgs = below ground surface
 NR = not recorded

Last Updated:
 5/23/2012
 Preliminary Data

0 500 1,000 2,000 Feet



Monitoring Location MW-10-94



MW-10-95

MW-10-96

Reach = 4B1
 River Mile = 166.7
 X = -120.5998 Y = 37.1337
 (Horizontal Datum is NAD83)

Distance From River (ft) = 2021
 Reference Elevation (ft NAVD88) = 99
 Site = lest

Land Use = Alfalfa
 Protocol Reference = ATR App F Sec 2
 Agency = USBR

Measurements:

- 1. Type = Electronic Sounder Measurement
 Interval = Weekly - Priority
 Date Range = 4/19/2010 - 1/18/2012
- 2. Type = Datalogger
 Interval = Hourly
 Date Range = 5/3/2010 - 1/18/2012
- 3. Type =
 Interval =
 Date Range =

Description:

2 inch PVC casing AG

Root Depth (ft bgs) = 4.0
 GS Buffer (ft) = 2.2
 Screen Depth (ft bgs) = 13.0 - 28.0
 Capillary Rise (ft) = 1.0
 Historical GW level (ft bgs) = 50
 Field Threshold (ft bgs) = 5
 Threshold Elevation (ft NAVD88) = 92.8

Influences:

Chamberlain Slough

* = assumed value
 bgs = below ground surface
 NR = not recorded

Last Updated:
 5/23/2012

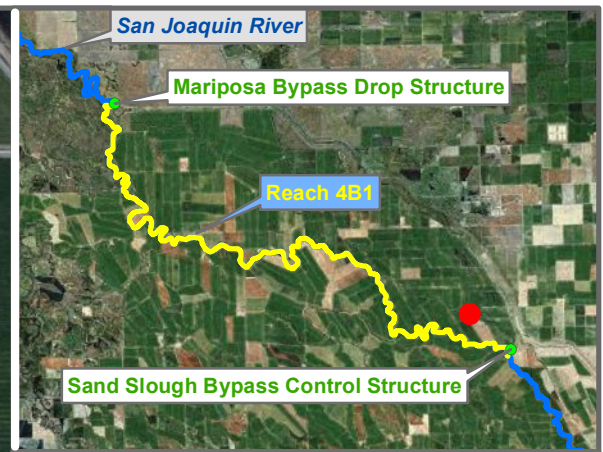
Preliminary Data

0 500 1,000 2,000 Feet



Groundwater

Monitoring Location MW-10-95



Reach = 4B1
 River Mile = 166.7
 X = -120.6063 Y = 37.1253
 (Horizontal Datum is NAD83)
 Distance From River (ft) = 3129
 Reference Elevation (ft NAVD88) = 100.4
 Site = lest
 Land Use = Alfalfa
 Protocol Reference = ATR App F Sec 2
 Agency = USBR
 Measurements:
 1. Type = Electronic Sounder Measurement
 Interval = Monthly
 Date Range = 4/19/2010 - 1/5/2012
 2. Type = Datalogger
 Interval = Hourly
 Date Range = 5/3/2010 - 1/18/2012
 3. Type =
 Interval =
 Date Range =

Description:
 2 inch PVC casing AG

Root Depth (ft bgs) = 4.0
 GS Buffer (ft) = 2.0
 Screen Depth (ft bgs) = 10-25
 Capillary Rise (ft) = 1.0
 Historical GW level (ft bgs) = 50
 Field Threshold (ft bgs) = 5
 Threshold Elevation (ft NAVD88) = 94.3

Influences:
 Sand Slough

* = assumed value
 bgs = below ground surface
 NR = not recorded

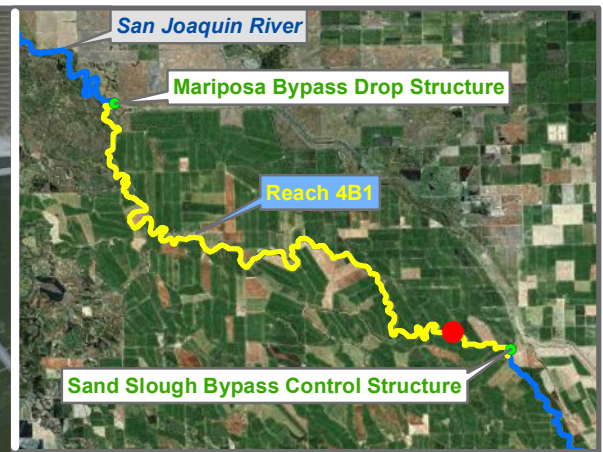
Last Updated:
 5/23/2012
 Preliminary Data

0 500 1,000 2,000 Feet



Groundwater

Monitoring Location MW-10-96



Reach = 4B1
 River Mile = 166.7
 X = -120.6143 Y = 37.1190
 (Horizontal Datum is NAD83)
 Distance From River (ft) = 391
 Reference Elevation (ft NAVD88) = 101.2
 Site = lest
 Land Use = Annual Crops
 Protocol Reference = ATR App F Sec 2
 Agency = USBR
 Measurements:
 1. Type = Electronic Sounder Measurement
 Interval = Monthly
 Date Range = Currently Unavailable
 2. Type = Datalogger
 Interval = Hourly
 Date Range = Currently Unavailable
 3. Type =
 Interval =
 Date Range =

Description:
 2 inch PVC casing AG

Root Depth (ft bgs) = 4.0
 GS Buffer (ft) = 3.4
 Screen Depth (ft bgs) = 10-25
 Capillary Rise (ft) = 0.5
 Historical GW level (ft bgs) = 50
 Field Threshold (ft bgs) = 4.5
 Threshold Elevation (ft NAVD88) = 94.2

Influences:
 Well 105, SJR

* = assumed value
 bgs = below ground surface
 NR = not recorded

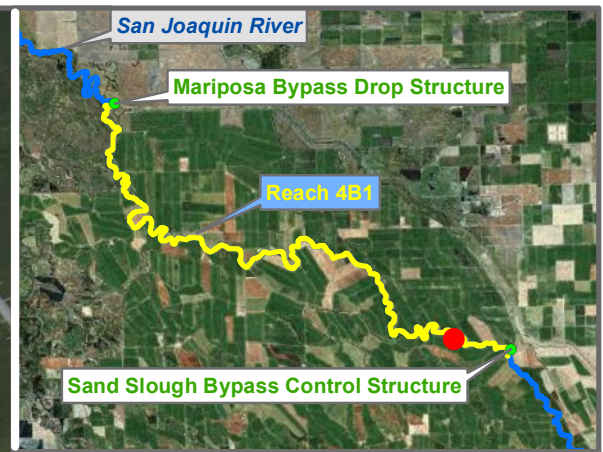
Last Updated:
 5/24/2012
 Preliminary Data

0 500 1,000 2,000 Feet



Groundwater

Monitoring Location MW-10-97



Reach = 4B1
 River Mile = 167.027304201
 X = -120.6137 Y = 37.1164
 (Horizontal Datum is NAD83)
 Distance From River (ft) = 84
 Reference Elevation (ft NAVD88) = 102.2
 Site = San Juan Ranch
 Land Use = Tomato
 Protocol Reference = ATR App F Sec 2
 Agency = USBR
 Measurements:
 1. Type = Electronic Sounder Measurement
 Interval = Monthly
 Date Range = Currently Unavailable
 2. Type = Datalogger
 Interval =
 Date Range = Currently Unavailable
 3. Type =
 Interval =
 Date Range =

Description:
 2 inch PVC casing AG

Root Depth (ft bgs) = 3.0
 GS Buffer (ft) = 4.0
 Screen Depth (ft bgs) = 9.0 - 24.0
 Capillary Rise (ft) = 1.0
 Historical GW level (ft bgs) = 50
 Field Threshold (ft bgs) = 4
 Threshold Elevation (ft NAVD88) = 94.2

Influences:
 SJR

* = assumed value
 bgs = below ground surface
 NR = not recorded

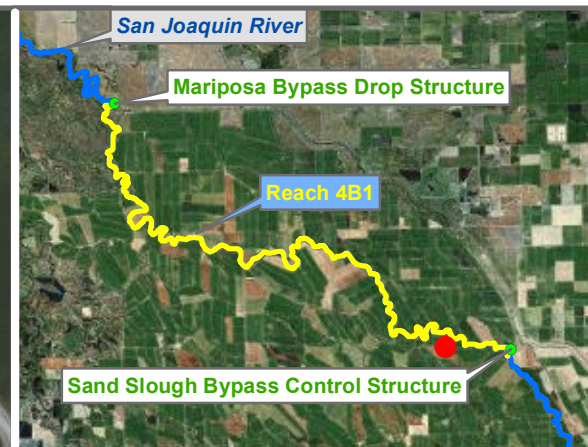
Last Updated:
 5/24/2012
 Preliminary Data

0 500 1,000 2,000 Feet



Groundwater

Monitoring Location MW-10-98



Reach = 4B1
 River Mile = 166.635734687
 X = -120.6175 Y = 37.1140
 (Horizontal Datum is NAD83)
 Distance From River (ft) = 1443
 Reference Elevation (ft NAVD88) = 104.3
 Site = San Juan Ranch
 Land Use = Annual Crops
 Protocol Reference = ATR App F Sec 2
 Agency = USBR
 Measurements:
 1. Type = Electronic Sounder Measurement
 Interval = Monthly
 Date Range = 6/14/2010 - 12/6/2011
 2. Type = Datalogger
 Interval =
 Date Range = 9/9/2010 - 1/27/2011
 3. Type =
 Interval =
 Date Range =

Description:
 2 inch PVC casing AG

Root Depth (ft bgs) = 4.0
 GS Buffer (ft) = 4.7
 Screen Depth (ft bgs) = 10-25
 Capillary Rise (ft) = 1.0
 Historical GW level (ft bgs) = 50
 Field Threshold (ft bgs) = 5
 Threshold Elevation (ft NAVD88) = 94.6

Influences:
 Dairy Field Drain

* = assumed value
 bgs = below ground surface
 NR = not recorded

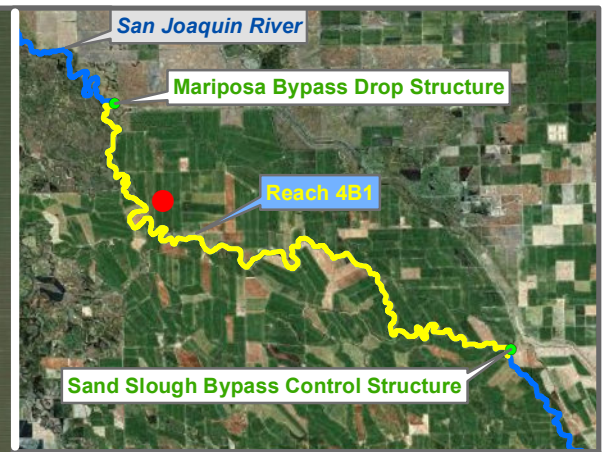
Last Updated:
 5/23/2012
 Preliminary Data

0 500 1,000 2,000 Feet



Groundwater

Monitoring Location MW-10-99



Reach = 4B1
 River Mile = 153
 X = -120.7422 Y = 37.1683
 (Horizontal Datum is NAD83)
 Distance From River (ft)= 2372
 Reference Elevation (ft NAVD88) = 90.93
 Site = West Turner Island
 Land Use = Tomato
 Protocol Reference = ATR App F Sec 2
 Agency = USBR
 Measurements:
 1. Type = Electronic Sounder Measurement
 Interval = Weekly
 Date Range = 6/2/2011 - 11/15/2011
 2. Type = Datalogger
 Interval = Hourly
 Date Range = 6/9/2011 - 11/15/2011
 3. Type =
 Interval =
 Date Range =

Description:
 2 inch PVC casing, above ground

Root Depth (ft bgs) = 3.0
 GS Buffer (ft) = 0.0
 Screen Depth (ft bgs) = 12.6-27.6
 Capillary Rise (ft) = 1.0
 Historical GW level (ft bgs) = 50
 Field Threshold (ft bgs) = 4
 Threshold Elevation (ft NAVD88) = 86.9

Influences:
 Unlined Open Drain

* = assumed value
 bgs = below ground surface
 NR = not recorded

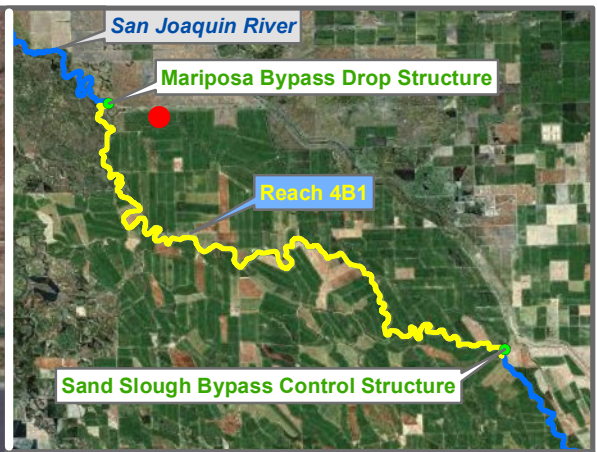
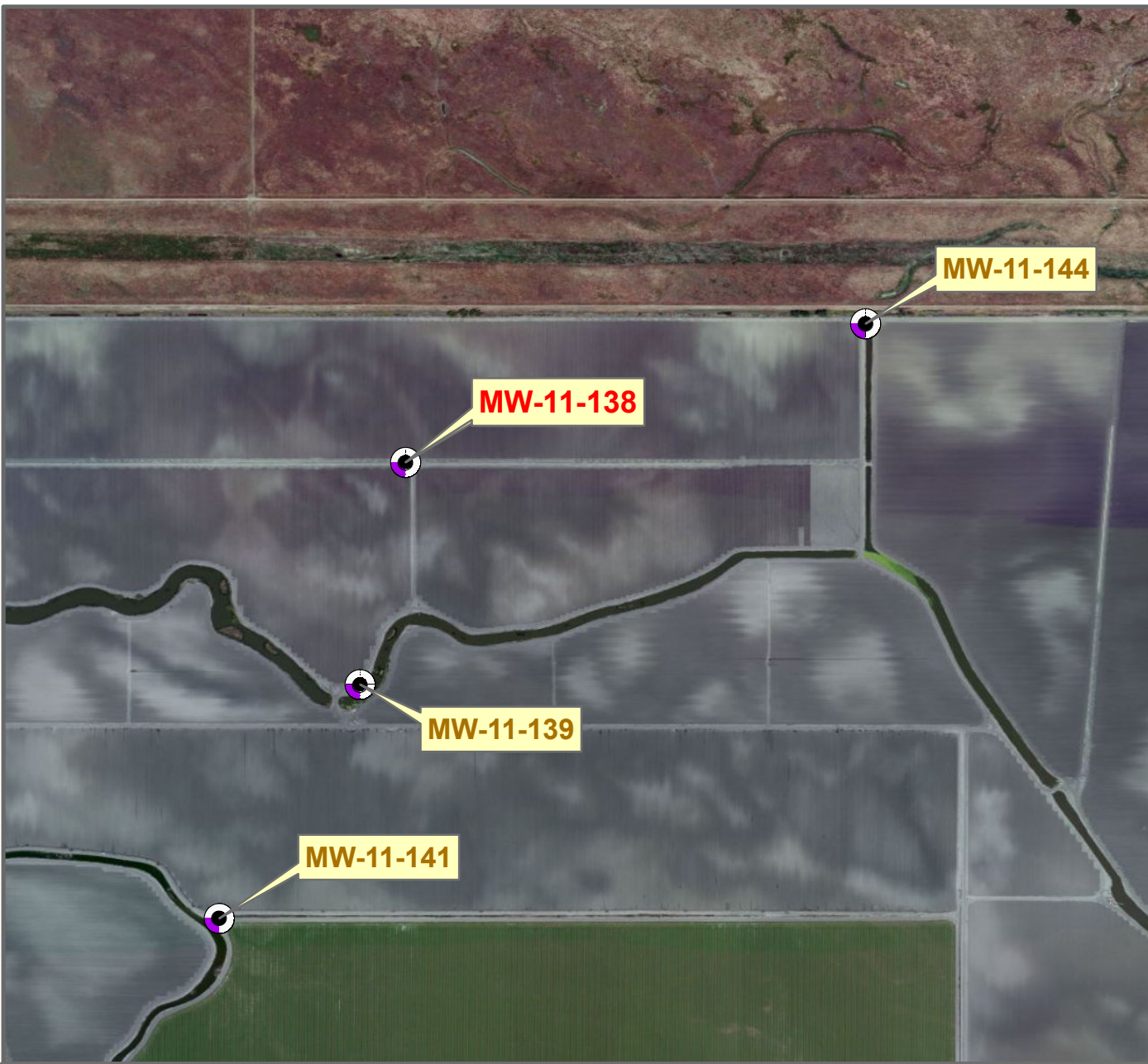
Last Updated:
 5/23/2012
 Preliminary Data

0 500 1,000 2,000 Feet



Groundwater

Monitoring Location MW-11-137



Reach = 4B1
 River Mile = 148.5
 X = -120.7403 Y = 37.1982
 (Horizontal Datum is NAD83)
 Distance From River (ft)= 1300
 Reference Elevation (ft NAVD88) = 93.321
 Site = Turner Island Farms
 Land Use = Tomato
 Protocol Reference = ATR App F Sec 2
 Agency = USBR
 Measurements:
 1. Type = Electronic Sounder Measurement
 Interval = Weekly
 Date Range = 6/2/2011 - 11/15/2011
 2. Type = Datalogger
 Interval = Hourly
 Date Range = 6/9/2011 - 11/15/2011
 3. Type =
 Interval =
 Date Range =

Description:
 2 inch PVC casing, above ground

Root Depth (ft bgs) = 3.0
 GS Buffer (ft) = 0.0
 Screen Depth (ft bgs) = 13.2-18.2; 23.2-28.2
 Capillary Rise (ft) = 1.0
 Historical GW level (ft bgs) = 50
 Field Threshold (ft bgs) = 4
 Threshold Elevation (ft NAVD88) = 89.3

Influences:
 Slough

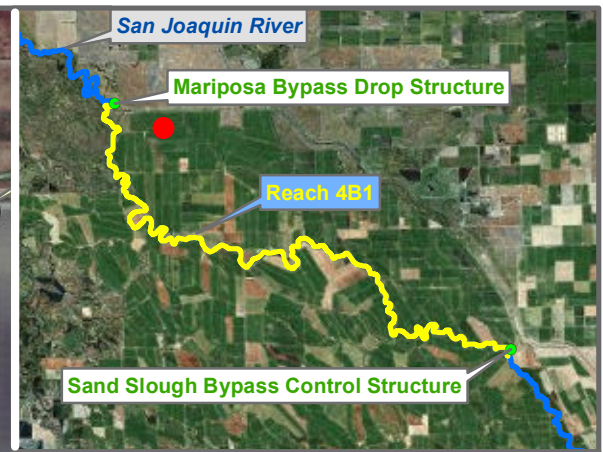
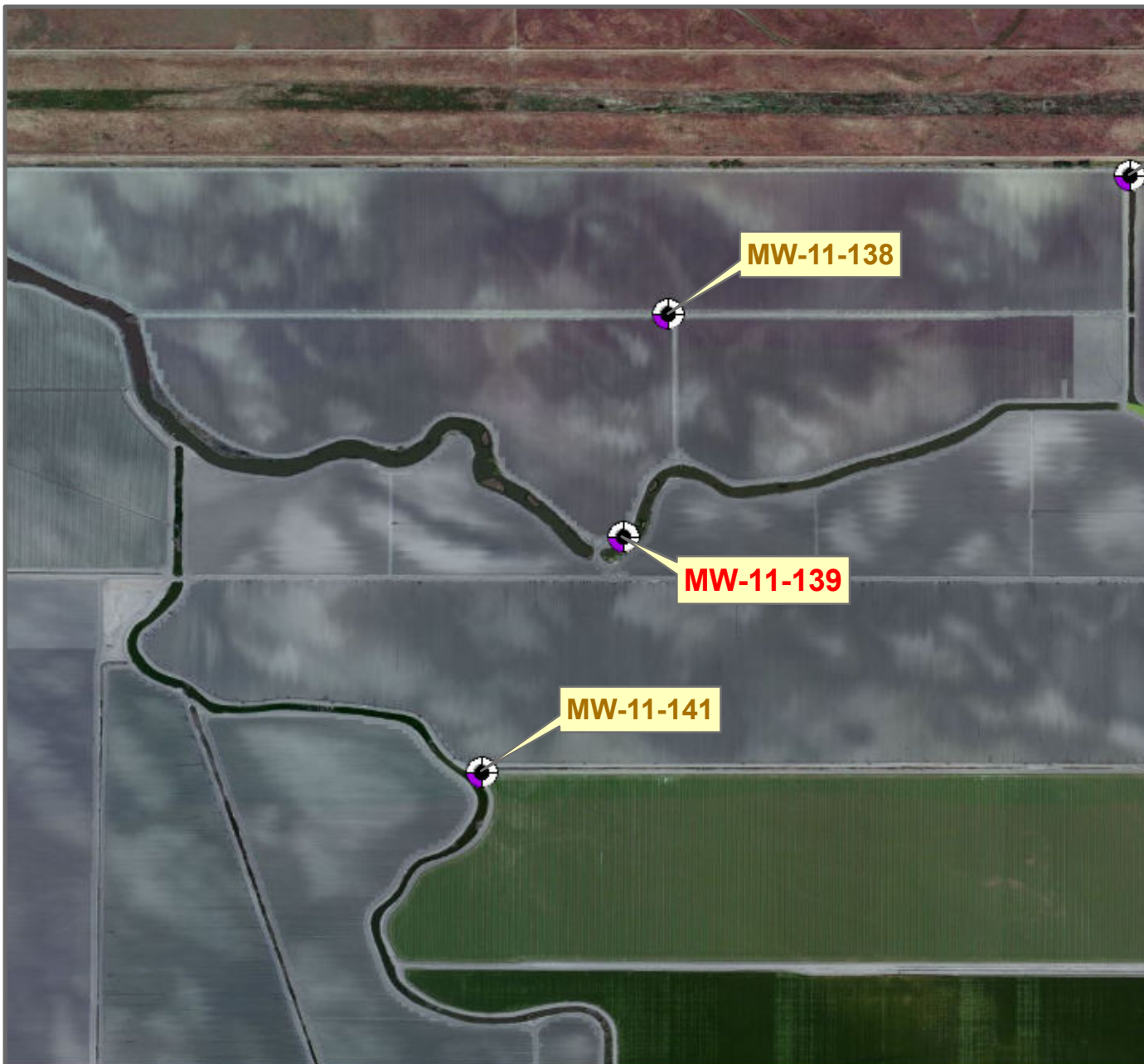
Last Updated:
 5/23/2012
 Preliminary Data

Monitoring Location MW-11-138

0 500 1,000 2,000 Feet



Groundwater



Reach = 4B1
 Merced County
 River Mile = 148.5
 Right Bank
 X = -120.7411 Y = 37.1944 Status = Existing
 (Horizontal Datum is NAD83)
 Distance From River (ft) = 2773
 Reference Elevation (ft NAVD88) = 89.598
 Site = Turner Island Farms
 Land Use = Tomato
 Protocol Reference = ATR App F Sec 2
 Agency = USBR

Measurements:
 1. Type = Electronic Sounder Measurement
 Interval = Weekly
 Date Range = 6/2/2011 - 11/15/2011
 2. Type = Datalogger
 Interval = Hourly
 Date Range = 6/9/2011 - 11/15/2011
 3. Type =
 Interval =
 Date Range =

Description:
 2 inch PVC casing, above ground

Root Depth (ft bgs) = 3.0
 GS Buffer (ft) = 0.0
 Screen Depth (ft bgs) = 7.8-27.8
 Capillary Rise (ft) = 1.0
 Historical GW level (ft bgs) = 50
 Field Threshold (ft bgs) = 4
 Threshold Elevation (ft NAVD88) = 85.6

Influences:
 Open Channel, Sump Pump, Filter Station,
 Mariposa Slough

* = assumed value
 bgs = below ground surface
 NR = not recorded

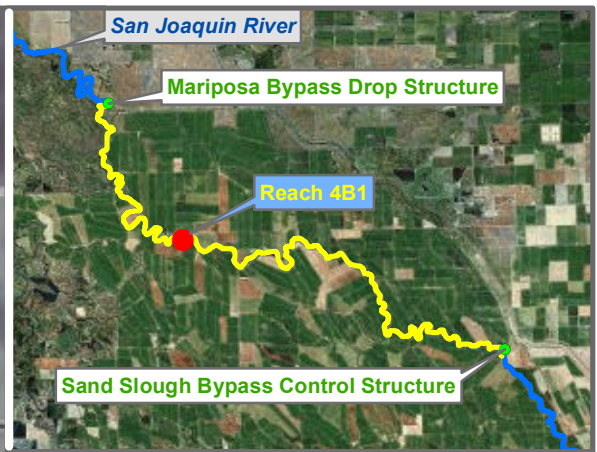
Last Updated:
 5/23/2012
 Preliminary Data

0 500 1,000 2,000 Feet



Groundwater

Monitoring Location MW-11-139



Reach = 4B1
 River Mile = 155.1
 X = -120.7310 Y = 37.1542
 (Horizontal Datum is NAD83)
 Distance From River (ft) = 259
 Reference Elevation (ft NAVD88) = 94.606
 Site = Delta Ranch
 Land Use = Tomato
 Protocol Reference = ATR App F Sec 2
 Agency = USBR

Merced County
 Left Bank
 Status = Existing

- Measurements:
1. Type = Electronic Sounder Measurement
 Interval = Weekly
 Date Range = 6/2/2011 - 11/15/2011
 2. Type = Datalogger
 Interval = Hourly
 Date Range = 6/9/2011 - 11/15/2011
 3. Type =
 Interval =
 Date Range =

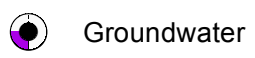
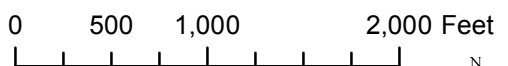
Description:
 2 inch PVC casing, above ground

Root Depth (ft bgs) = 3.0
 GS Buffer (ft) = 0.0
 Screen Depth (ft bgs) = 13.3-28.3
 Capillary Rise (ft) = 1.0
 Historical GW level (ft bgs) = 50
 Field Threshold (ft bgs) = 4
 Threshold Elevation (ft NAVD88) = 90.6

Influences:
 Open Channel, SJR

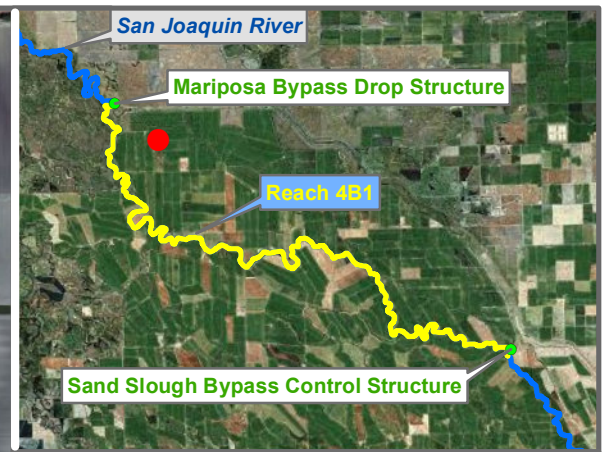
* = assumed value
 bgs = below ground surface
 NR = not recorded

Last Updated:
 5/23/2012
 Preliminary Data



Monitoring Location

MW-11-140



Reach = 4B1
 River Mile = 148.8
 X = -120.7436 Y = 37.1903
 (Horizontal Datum is NAD83)
 Distance From River (ft)= 4254
 Reference Elevation (ft NAVD88) = 89.264
 Site = West Turner Island
 Land Use = Tomato
 Protocol Reference = ATR App F Sec 2
 Agency = USBR

Merced County
 Right Bank
 Status = Existing

Measurements:

1. Type = Electronic Sounder Measurement
Interval = Weekly
Date Range = 6/2/2011 - 11/15/2011
2. Type = Datalogger
Interval = Hourly
Date Range = 6/9/2011 - 11/15/2011
3. Type =
Interval =
Date Range =

Description:

2 inch PVC casing, above ground

Root Depth (ft bgs) = 3.0
 GS Buffer (ft) = 0.0
 Screen Depth (ft bgs) = 12.6-27.6
 Capillary Rise (ft) = 1.0
 Historical GW level (ft bgs) = 50
 Field Threshold (ft bgs) = 4
 Threshold Elevation (ft NAVD88) = 85.3

Influences:

Open Drain, Open Channel

* = assumed value
 bgs = below ground surface
 NR = not recorded

Last Updated:
 5/23/2012

Preliminary Data

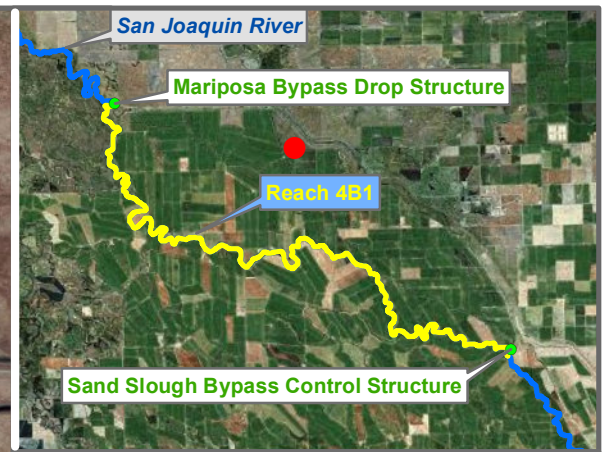
0 500 1,000 2,000 Feet



Groundwater

Monitoring Location

MW-11-141



Reach = 4B1
 River Mile = 155.6
 X = -120.6829 Y = 37.1861
 (Horizontal Datum is NAD83)
 Distance From River (ft)= 2236
 Reference Elevation (ft NAVD88) = 96.001
 Site = Turner Island Farms
 Land Use = Tomato
 Protocol Reference = ATR App F Sec 2
 Agency = USBR

Merced County
 Right Bank
 Status = Existing

- Measurements:
- Type = Electronic Sounder Measurement
Interval = Weekly
Date Range = 6/2/2011 - 11/15/2011
 - Type = Realtime - 142
Interval = Hourly
Date Range = 6/16/2011 - 11/15/2011
 - Type =
Interval =
Date Range =

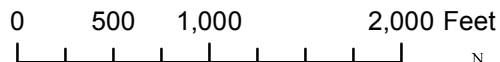
Description:
 2 inch PVC casing, above ground

Root Depth (ft bgs) = 3.0
 GS Buffer (ft) = 0.0
 Screen Depth (ft bgs) = 17.7-27.7
 Capillary Rise (ft) = 1.0
 Historical GW level (ft bgs) = 50
 Field Threshold (ft bgs) = 4
 Threshold Elevation (ft NAVD88) = 92.0

Influences:
 Open Drain/Canal, Irrigation Supply Well

* = assumed value
 bgs = below ground surface
 NR = not recorded

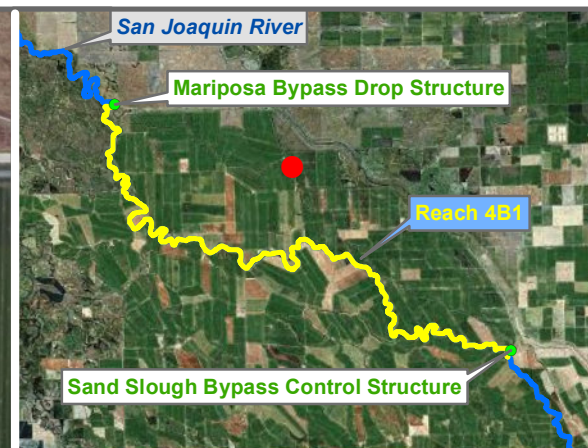
Last Updated:
 5/23/2012
 Preliminary Data



 Groundwater

Monitoring Location

MW-11-142



Reach = 4B1
 Merced County
 River Mile = 155.6
 Right Bank
 X = -120.6841 Y = 37.1798 Status = Existing
 (Horizontal Datum is NAD83)
 Distance From River (ft)= 4151
 Reference Elevation (ft NAVD88) = 93.084
 Site = Turner Island Farms
 Land Use = Tomato
 Protocol Reference = ATR App F Sec 2
 Agency = USBR

Measurements:
 1. Type = Electronic Sounder Measurement
 Interval = Weekly
 Date Range = 6/2/2011 - 11/15/2011
 2. Type = Datalogger
 Interval = Hourly
 Date Range = 6/9/2011 - 11/15/2011
 3. Type =
 Interval =
 Date Range =

Description:
 2 inch PVC casing, above ground

Root Depth (ft bgs) = 3.0
 GS Buffer (ft) = 0.0
 Screen Depth (ft bgs) = 17.6-27.6
 Capillary Rise (ft) = 1.0
 Historical GW level (ft bgs) = 50
 Field Threshold (ft bgs) = 4
 Threshold Elevation (ft NAVD88) = 89.1

Influences:
 Open Drain, Open Channel, Irrigation Supply Well

* = assumed value
 bgs = below ground surface
 NR = not recorded

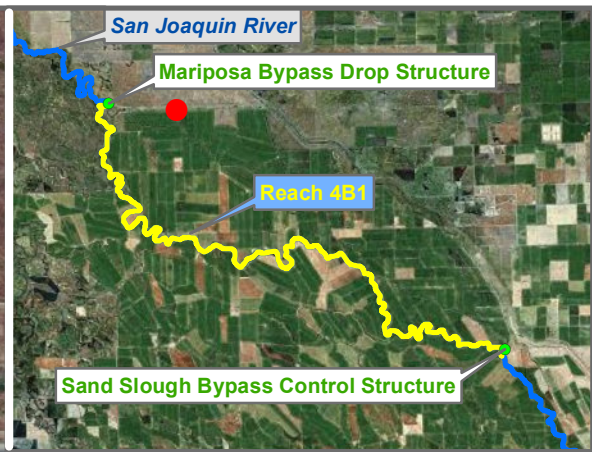
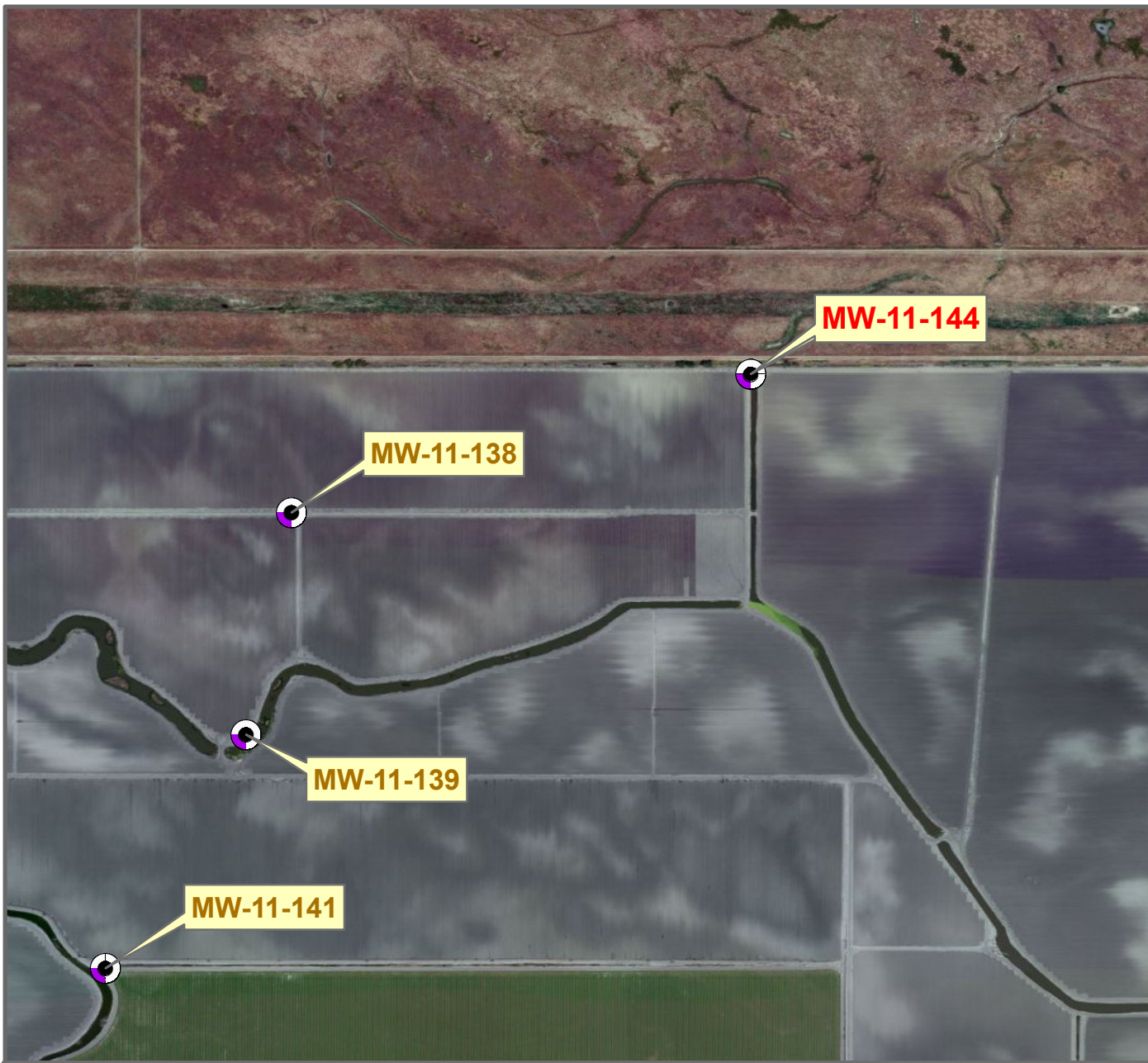
Last Updated:
 5/23/2012
 Preliminary Data

0 500 1,000 2,000 Feet



Groundwater

Monitoring Location MW-11-143

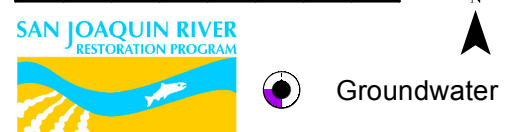


Reach = 4B1
 River Mile = 148.5
 X = -120.7324 Y = 37.2006
 (Horizontal Datum is NAD83)
 Distance From River (ft) = 511
 Reference Elevation (ft NAVD88) = 89.116
 Site = Turner Island Farms
 Land Use = Tomato
 Protocol Reference = ATR App F Sec 2
 Agency = USBR
 Measurements:
 1. Type = Electronic Sounder Measurement
 Interval = Weekly
 Date Range = 6/2/2011 - 11/15/2011
 2. Type = Datalogger
 Interval = Hourly
 Date Range = 6/9/2011 - 11/15/2011
 3. Type =
 Interval =
 Date Range =

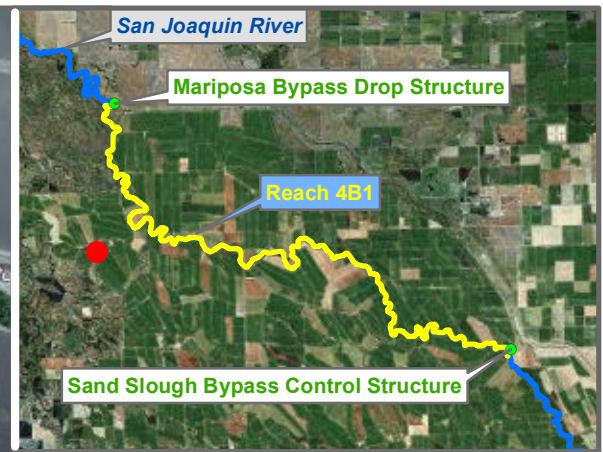
Merced County
 Right Bank
 Status = Existing
 Description:
 2 inch PVC casing, above ground
 Root Depth (ft bgs) = 3.0
 GS Buffer (ft) = 0.0
 Screen Depth (ft bgs) = 13.5-28.5
 Capillary Rise (ft) = 1.0
 Historical GW level (ft bgs) = 50
 Field Threshold (ft bgs) = 4
 Threshold Elevation (ft NAVD88) = 85.1

Influences:
 Unlined Levee Toe Drain, Unlined Open Drain,
 Sump Pump

Last Updated:
 5/23/2012
 Preliminary Data
 * = assumed value
 bgs = below ground surface
 NR = not recorded



Monitoring Location MW-11-144



Reach = 4B1
 River Mile = 153
 X = -120.7722 Y = 37.1505 Status = Existing
 (Horizontal Datum is NAD83)
 Distance From River (ft) = 5788
 Reference Elevation (ft NAVD88) = 89.26
 Site = Delta Ranch
 Land Use = Tomato
 Protocol Reference = ATR App F Sec 2
 Agency = USBR
 Measurements:
 1. Type = Electronic Sounder Measurement
 Interval = Weekly
 Date Range = 6/2/2011 - 11/15/2011
 2. Type = Datalogger
 Interval = Hourly
 Date Range = 6/9/2011 - 11/15/2011
 3. Type =
 Interval =
 Date Range =

Description:
 2 inch PVC casing, above ground

Root Depth (ft bgs) = 3.0
 GS Buffer (ft) = 0.0
 Screen Depth (ft bgs) = 13.7-28.7
 Capillary Rise (ft) = 1.0
 Historical GW level (ft bgs) = 50
 Field Threshold (ft bgs) = 4
 Threshold Elevation (ft NAVD88) = 85.3

Influences:
 Unlined Head Ditch with gate valve, Salt Slough,
 Circle Island Drain

* = assumed value
 bgs = below ground surface
 NR = not recorded

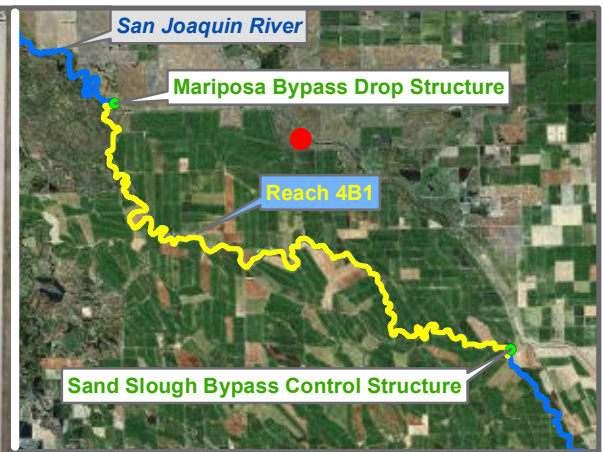
Last Updated:
 5/23/2012
 Preliminary Data

0 500 1,000 2,000 Feet



Groundwater

Monitoring Location MW-11-145



Reach = 4B1
 River Mile = 155.6
 X = -120.6799 Y = 37.1895
 (Horizontal Datum is NAD83)
 Distance From River (ft) = 768
 Reference Elevation (ft NAVD88) = 96.753
 Site = Crane Ranch
 Land Use = Tomato
 Protocol Reference = ATR App F Sec 2
 Agency = USBR

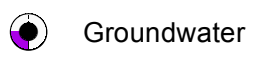
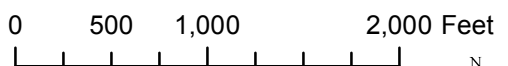
Measurements:
 1. Type = Electronic Sounder Measurement
 Interval = Weekly
 Date Range = 6/2/2011 - 11/15/2011
 2. Type = Datalogger
 Interval = Hourly
 Date Range = 6/9/2011 - 11/15/2011
 3. Type =
 Interval =
 Date Range =

Description:
 2 inch PVC casing, above ground

Root Depth (ft bgs) = 3.0
 GS Buffer (ft) = 0.0
 Screen Depth (ft bgs) = 19.2-29.2
 Capillary Rise (ft) = 1.0
 Historical GW level (ft bgs) = 50
 Field Threshold (ft bgs) = 4
 Threshold Elevation (ft NAVD88) = 92.8

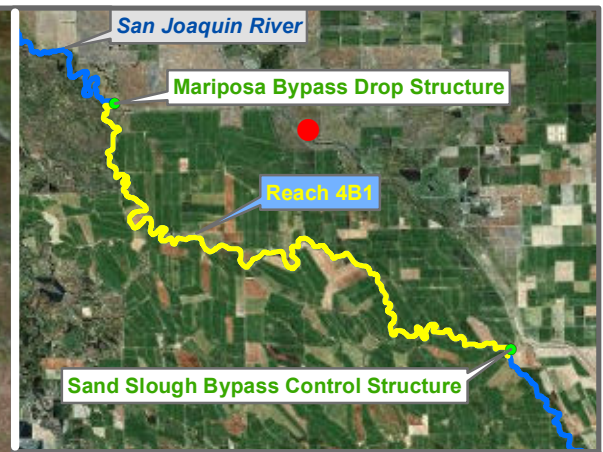
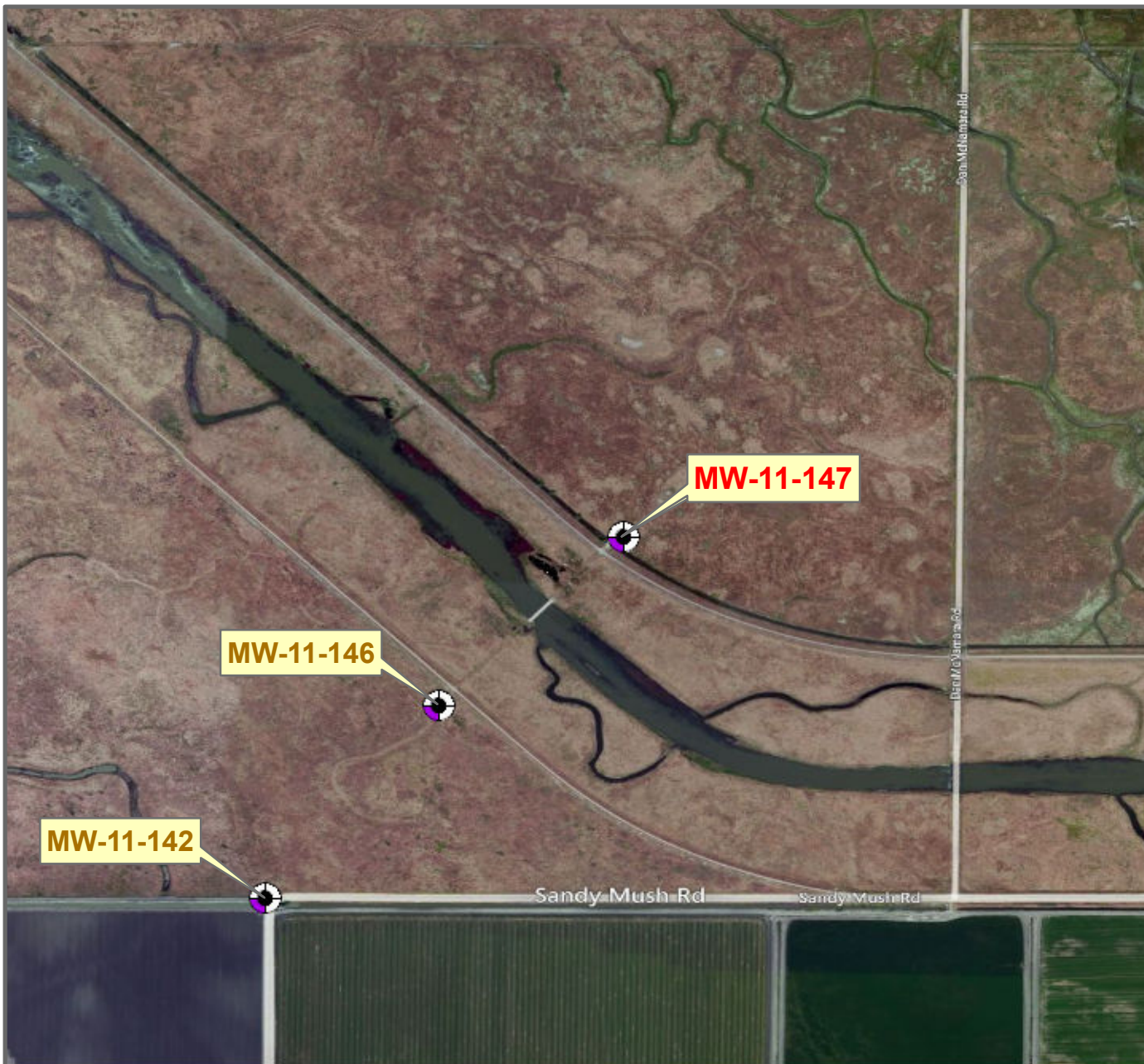
Influences:
 Open Toe Drain/canal, Mariposa Bypass

Last Updated: 5/23/2012
 Preliminary Data
 * = assumed value
 bgs = below ground surface
 NR = not recorded



Monitoring Location

MW-11-146



Reach = 4B1
 River Mile = 155.6
 X = -120.6767 Y = 37.1923
 (Horizontal Datum is NAD83)
 Distance From River (ft) = 599
 Reference Elevation (ft NAVD88) = 97.852
 Site = Crane Ranch
 Land Use = Tomato
 Protocol Reference = ATR App F Sec 2
 Agency = USBR

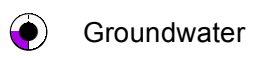
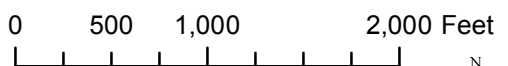
Measurements:
 1. Type = Electronic Sounder Measurement
 Interval = Weekly
 Date Range = 6/2/2011 - 11/15/2011
 2. Type = Datalogger
 Interval = Hourly
 Date Range = 6/9/2011 - 11/15/2011
 3. Type =
 Interval =
 Date Range =

Description:
 2 inch PVC casing, above ground

Root Depth (ft bgs) = 3.0
 GS Buffer (ft) = 0.0
 Screen Depth (ft bgs) = 9.8-14.8; 24.8-29.8
 Capillary Rise (ft) = 1.0
 Historical GW level (ft bgs) = 50
 Field Threshold (ft bgs) = 4
 Threshold Elevation (ft NAVD88) = 93.9

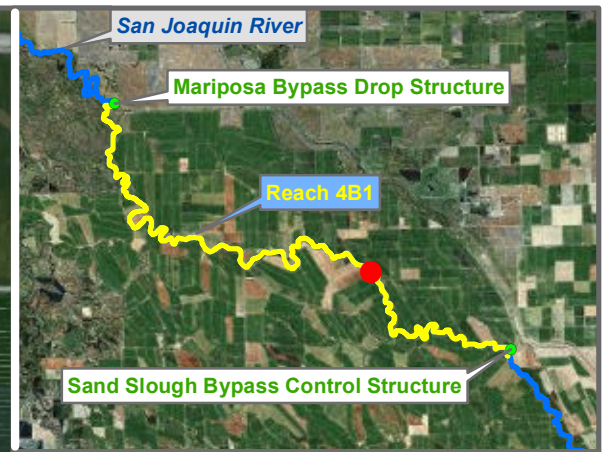
Influences:
 Mariposa Bypass

Last Updated:
 5/23/2012
 Preliminary Data



Monitoring Location

MW-11-147



Reach = 4B1
 Merced County
 River Mile = Right Bank
 X = -120.6502 Y = 37.1412 Status =
 (Horizontal Datum is NAD83)
 Distance From River Centerline (ft)=
 Reference Elevation (ft NAVD88) = 103.203
 Site =

Land Use =
 Protocol Reference =
 Agency = USBR

Measurements:

1. Type = Electronic Sounder Measurement
Interval =
Date Range = Currently Unavailable
2. Type =
Interval =
Date Range =
3. Type =
Interval =
Date Range =

Description:

Root Depth (ft bgs) =
 GS Buffer (ft) =
 Screen Depth (ft bgs) =
 Capillary Rise (ft) =
 Historical GW level (ft bgs) = 50
 Field Threshold (ft bgs) =
 Threshold Elevation (ft NAVD88) =

Influences:

* = assumed value
 bgs = below ground surface
 NR = not recorded

Last Updated:
 5/24/2012

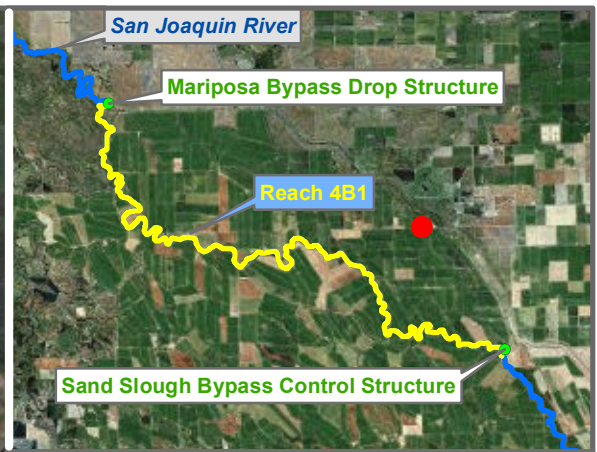
Preliminary Data

0 500 1,000 2,000 Feet



Groundwater

Monitoring Location MW-11-152



Reach = 4B1
 River Mile = Merced County
 X = -120.6242 Y = 37.1569 Right Bank Status =
 (Horizontal Datum is NAD83)
 Distance From River Centerline (ft)=
 Reference Elevation (ft NAVD88) = 99.79
 Site =
 Land Use =
 Protocol Reference =
 Agency = USBR
 Measurements:
 1. Type = Electronic Sounder Measurement
 Interval =
 Date Range = Currently Unavailable
 2. Type =
 Interval =
 Date Range =
 3. Type =
 Interval =
 Date Range =

Description:

Root Depth (ft bgs) =
 GS Buffer (ft) =
 Screen Depth (ft bgs) =
 Capillary Rise (ft) =
 Historical GW level (ft bgs) = 50
 Field Threshold (ft bgs) =
 Threshold Elevation (ft NAVD88) =

Influences:

* = assumed value
 bgs = below ground surface
 NR = not recorded

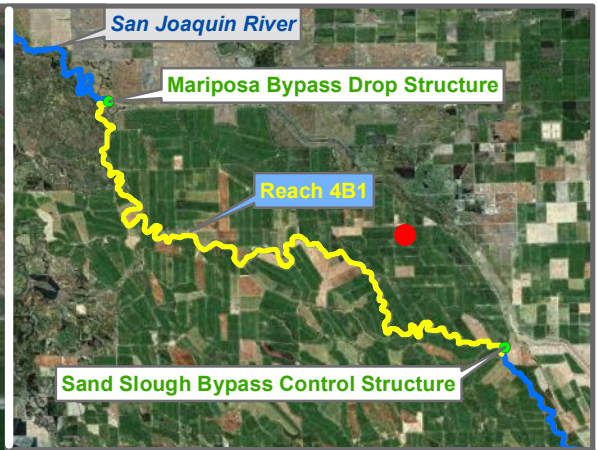
Last Updated:
 5/24/2012
 Preliminary Data

0 500 1,000 2,000 Feet



Groundwater

Monitoring Location MW-11-153



Reach = 4B1 Merced County
 River Mile = Right Bank
 X = -120.6317 Y = 37.1534 Status =
 (Horizontal Datum is NAD83)
 Distance From River Centerline (ft) =
 Reference Elevation (ft NAVD88) = 98.598

Site =
 Land Use =
 Protocol Reference =
 Agency = USBR

Measurements:
 1. Type = Electronic Sounder Measurement
 Interval =
 Date Range = Currently Unavailable
 2. Type =
 Interval =
 Date Range =
 3. Type =
 Interval =
 Date Range =

Description:

Root Depth (ft bgs) =
 GS Buffer (ft) =
 Screen Depth (ft bgs) =
 Capillary Rise (ft) =
 Historical GW level (ft bgs) = 50
 Field Threshold (ft bgs) =
 Threshold Elevation (ft NAVD88) =

Influences:

* = assumed value
 bgs = below ground surface
 NR = not recorded

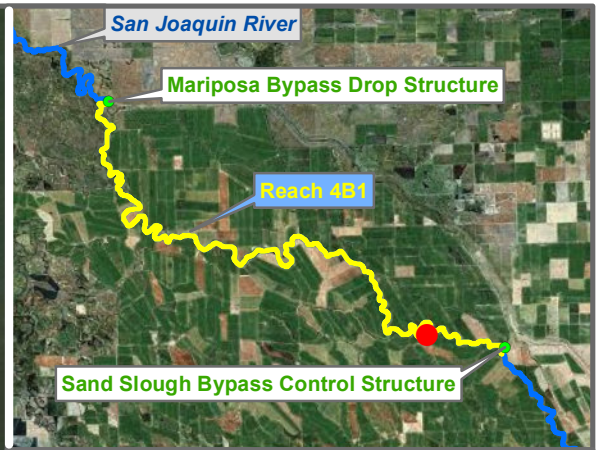
Last Updated:
 5/24/2012
 Preliminary Data

0 500 1,000 2,000 Feet



 Groundwater

Monitoring Location MW-11-154



Reach = 4B1
 River Mile = 166
 X = -120.6233 Y = 37.1174
 Distance From River (ft) = 719
 Reference Elevation (ft NAVD88) = 100.17
 Site = San Juan Ranch - NFF
 Land Use = Assumed Annual Crop
 Protocol Reference = ATR App F Sec 2
 Agency = NFF

Merced County
 Left Bank
 Status = Existing

Measurements:

1. Type = Electronic Sounder Measurement
Interval = Monthly by USBR
Date Range = 9/22/2010 - 12/6/2011
2. Type =
Interval =
Date Range =
3. Type =
Interval =
Date Range =

Description:

Root Depth (ft bgs) = 4.0
 GS Buffer (ft) = 1.8
 Screen Depth (ft bgs) =
 Capillary Rise (ft) = 1.0*
 Historical GW level (ft bgs) = 50
 Field Threshold (ft bgs) = 5
 Threshold Elevation (ft NAVD88) = 93.4

Influences:

-

Last Updated:
 5/23/2012

* = assumed value
 bgs = below ground surface
 NR = not recorded

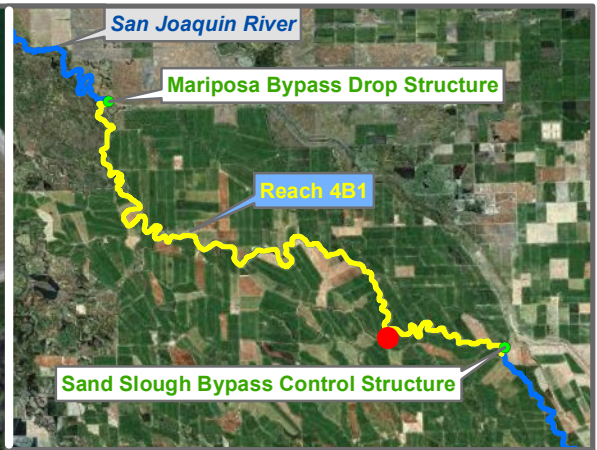
Preliminary Data

0 500 1,000 2,000 Feet



Groundwater

Monitoring Location SJR W-1



Reach = 4B1
 River Mile = 164.4
 X = -120.6406 Y = 37.1166
 (Horizontal Datum is NAD83)
 Distance From River (ft)= 661
 Reference Elevation (ft NAVD88) = 103.19
 Site = San Juan Ranch - NFF
 Land Use = Assumed Annual Crop
 Protocol Reference = ATR App F Sec 2
 Agency = NFF

Merced County
 Left Bank
 Status = Existing

- Measurements:
1. Type = Electronic Sounder Measurement
Interval = Monthly by USBR
Date Range = 8/17/2010 - 12/6/2011
 2. Type =
Interval =
Date Range =
 3. Type =
Interval =
Date Range =

Description:

Root Depth (ft bgs) = 4.0
 GS Buffer (ft) = 4.2
 Screen Depth (ft bgs) =
 Capillary Rise (ft) = 1.0*
 Historical GW level (ft bgs) = 50
 Field Threshold (ft bgs) = 5
 Threshold Elevation (ft NAVD88) = 94.0

Influences:
 Anderson Bypass, SJR

* = assumed value
 bgs = below ground surface
 NR = not recorded

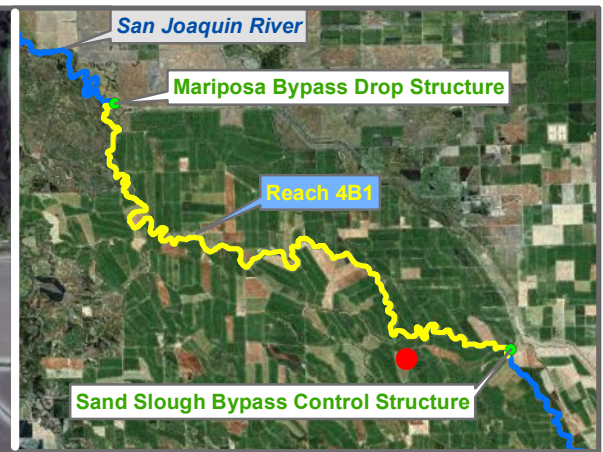
Last Updated:
 5/23/2012
 Preliminary Data

0 500 1,000 2,000 Feet



Groundwater

Monitoring Location SJR W-2



Reach = 4B1
 River Mile = 165
 X = -120.6352 Y = 37.1099
 (Horizontal Datum is NAD83)
 Distance From River (ft) = 2931
 Reference Elevation (ft NAVD88) = 102.54
 Site = San Juan Ranch - NFF
 Land Use = Assumed Annual Crop
 Protocol Reference = ATR App F Sec 2
 Agency = NFF

Merced County
 Left Bank
 Status = Existing

Measurements:

1. Type = Electronic Sounder Measurement
Interval = Monthly by USBR
Date Range = 8/17/2010 - 12/6/2011
2. Type =
Interval =
Date Range =
3. Type =
Interval =
Date Range =

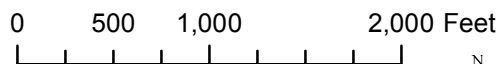
Description:

Root Depth (ft bgs) = 4.0
 GS Buffer (ft) = 3.8
 Screen Depth (ft bgs) =
 Capillary Rise (ft) = 1.0*
 Historical GW level (ft bgs) = 50
 Field Threshold (ft bgs) = 5
 Threshold Elevation (ft NAVD88) = 93.8

Influences:
 Salt Slough

* = assumed value
 bgs = below ground surface
 NR = not recorded

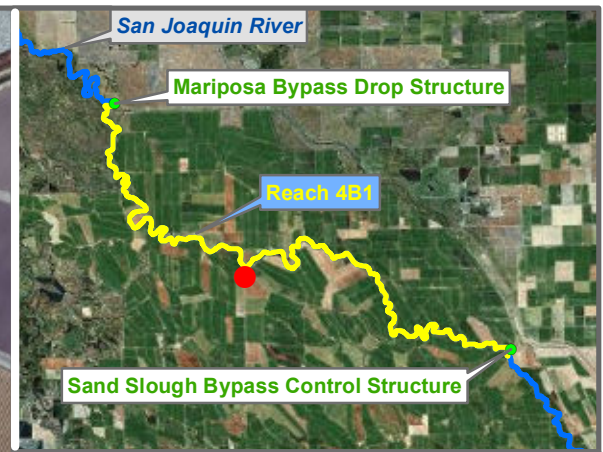
Last Updated:
 5/23/2012
 Preliminary Data



 Groundwater

Monitoring Location

SJR W-3



Reach = 4B1
 River Mile = 157.3
 X = -120.7064 Y = 37.1404
 (Horizontal Datum is NAD83)
 Distance From River (ft) = 1333
 Reference Elevation (ft NAVD88) = 93.5
 Site = SLCC
 Land Use =
 Protocol Reference = ATR App F Sec 2
 Agency = SLCC
 Measurements:
 1. Type =
 Interval =
 Date Range =
 2. Type =
 Interval =
 Date Range =
 3. Type =
 Interval =
 Date Range =

Merced County
 Left Bank
 Status = Existing

Description:

Root Depth (ft bgs) =
 GS Buffer (ft) =
 Screen Depth (ft bgs) =
 Capillary Rise (ft) =
 Historical GW level (ft bgs) = 50
 Field Threshold (ft bgs) =
 Threshold Elevation (ft NAVD88) =

Influences:
 Poso Drain

* = assumed value
 bgs = below ground surface
 NR = not recorded

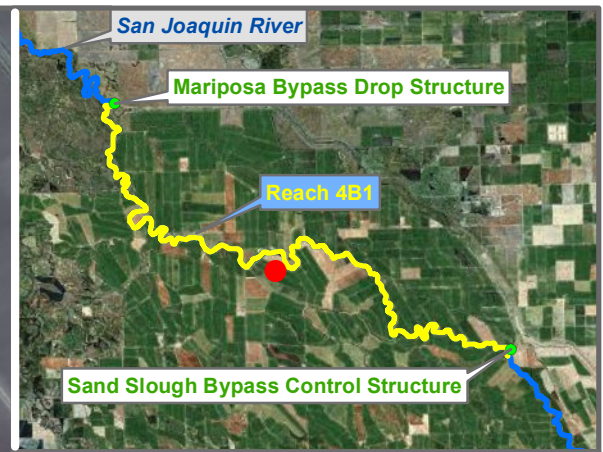
Last Updated:
 5/23/2012
 Preliminary Data

0 500 1,000 2,000 Feet



Groundwater

Monitoring Location SLCC-011



Reach = 4B1
 River Mile = 158.8
 X = -120.6926 Y = 37.1423
 Distance From River (ft) = 1637
 Reference Elevation (ft NAVD88) = 95.3
 Site = SLCC
 Land Use =
 Protocol Reference = ATR App F Sec 2
 Agency = SLCC
 Measurements:
 1. Type =
 Interval =
 Date Range =
 2. Type =
 Interval =
 Date Range =
 3. Type =
 Interval =
 Date Range =

Description:

Root Depth (ft bgs) =
 GS Buffer (ft) =
 Screen Depth (ft bgs) =
 Capillary Rise (ft) =
 Historical GW level (ft bgs) = 50
 Field Threshold (ft bgs) =
 Threshold Elevation (ft NAVD88) =

Influences:

-

* = assumed value
 bgs = below ground surface
 NR = not recorded

Last Updated:
5/23/2012

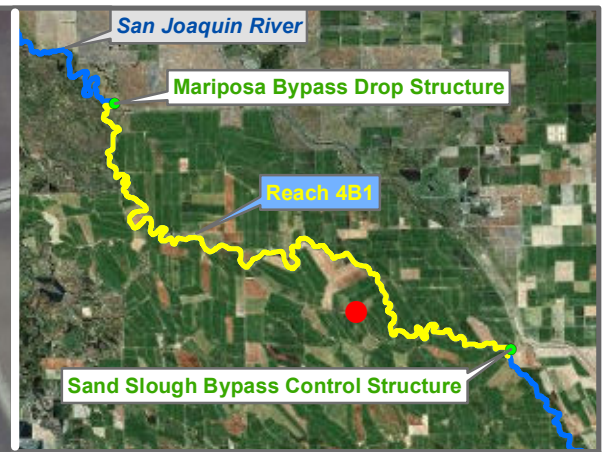
Preliminary Data

0 500 1,000 2,000 Feet



Groundwater

Monitoring Location SLCC-012



Reach = 4B1
 River Mile = 163.5
 X = -120.6571 Y = 37.1270
 (Horizontal Datum is NAD83)
 Distance From River (ft) = 3975
 Reference Elevation (ft NAVD88) = 98.7
 Site = SLCC
 Land Use =
 Protocol Reference = ATR App F Sec 2
 Agency = SLCC
 Measurements:
 1. Type =
 Interval =
 Date Range =
 2. Type =
 Interval =
 Date Range =
 3. Type =
 Interval =
 Date Range =

Merced County
 Left Bank
 Status = Existing

Description:

Root Depth (ft bgs) =
 GS Buffer (ft) =
 Screen Depth (ft bgs) =
 Capillary Rise (ft) =
 Historical GW level (ft bgs) = 50
 Field Threshold (ft bgs) =
 Threshold Elevation (ft NAVD88) =

Influences:
 Anderson Bypass, Drain

* = assumed value
 bgs = below ground surface
 NR = not recorded

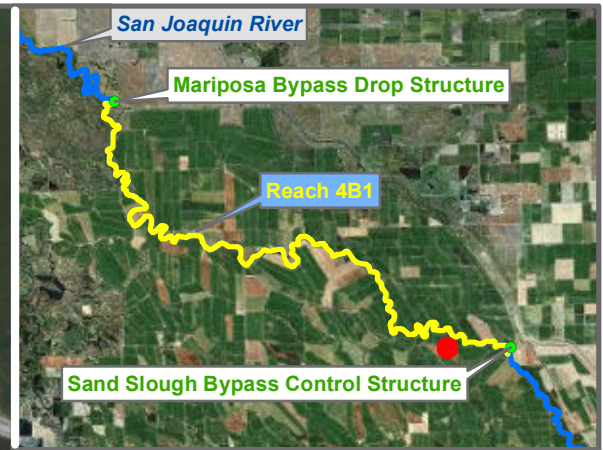
Last Updated:
 5/23/2012
 Preliminary Data

0 500 1,000 2,000 Feet



Groundwater

Monitoring Location SLCC-019



Reach = 4B1
 River Mile = 166.9
 X = -120.6168 Y = 37.1126
 (Horizontal Datum is NAD83)
 Distance From River (ft)= 1750
 Reference Elevation (ft NAVD88) = 102
 Site = SLCC
 Land Use = Tomato
 Protocol Reference = ATR App F Sec 2
 Agency = SLCC
 Measurements:
 1. Type =
 Interval =
 Date Range =
 2. Type =
 Interval =
 Date Range =
 3. Type =
 Interval =
 Date Range =

Merced County
 Left Bank
 Status = Existing

Description:

Root Depth (ft bgs) = 3.0
 GS Buffer (ft) =
 Screen Depth (ft bgs) =
 Capillary Rise (ft) =
 Historical GW level (ft bgs) = 50
 Field Threshold (ft bgs) = 3
 Threshold Elevation (ft NAVD88) = 101.6

Influences:
 Dairy Field Drain No. 2

* = assumed value
 bgs = below ground surface
 NR = not recorded

Last Updated:
 5/23/2012
 Preliminary Data

0 500 1,000 2,000 Feet



Groundwater

Monitoring Location SLCC-027