

Reach 4A GW Monitoring Locations



RECLAMATION
Managing Water in the West

Preliminary Data

Last Updated: 5/29/2012

V:\SJRRP\Monitoring Well Data\Atlas_GWR4A.mxd



Reach = 4A
 River Mile = 175.4
 X = -120.5966 Y = 37.0389
 (Horizontal Datum is NAD83)
 Distance From River (ft)= 15321
 Reference Elevation (ft NAVD88) = 111.9
 Site = CCID Well
 Land Use =
 Protocol Reference = ATR App F Sec 2
 Agency = CCID
 Measurements:
 1. Type = Electronic Sounder Measurement
 Interval = Quarterly
 Date Range = 3/1/2009 - 11/1/2009
 2. Type =
 Interval =
 Date Range =
 3. Type =
 Interval =
 Date Range =

Description:
 CCID well, no threshold

Root Depth (ft bgs) =
 GS Buffer (ft) =
 Screen Depth (ft bgs) = 7.0-16.0
 Capillary Rise (ft) =
 Historical GW level (ft bgs) = 50
 Field Threshold (ft bgs) =
 Threshold Elevation (ft NAVD88) =

Influences:
 Well 115, San Juan Drain, Canal, Slough

* = assumed value
 bgs = below ground surface
 NR = not recorded

Last Updated:
 5/23/2012
 Preliminary Data

0 500 1,000 2,000 Feet



Groundwater

Monitoring Location

110



Reach = 4A
 River Mile = 176.4
 X = -120.5993 Y = 37.0251
 (Horizontal Datum is NAD83)
 Distance From River (ft)= 15081
 Reference Elevation (ft NAVD88) = 113
 Site = CCID Well
 Land Use =
 Protocol Reference = ATR App F Sec 2
 Agency = CCID

Merced County
 Left Bank
 Status = Existing

Measurements:

1. Type = Electronic Sounder Measurement
Interval = Quarterly
Date Range = 3/1/2009 - 11/29/2010
2. Type =
Interval =
Date Range =
3. Type =
Interval =
Date Range =

Description:

CCID well, no threshold

Root Depth (ft bgs) =
 GS Buffer (ft) =
 Screen Depth (ft bgs) = 8.9-17.9
 Capillary Rise (ft) =
 Historical GW level (ft bgs) = 50
 Field Threshold (ft bgs) =
 Threshold Elevation (ft NAVD88) =

Influences:
 Arroyo canal

* = assumed value
 bgs = below ground surface
 NR = not recorded

Last Updated:
 5/23/2012
 Preliminary Data

0 500 1,000 2,000 Feet



Groundwater

Monitoring Location

111



Reach = 4A
 River Mile = 175.4
 X = -120.5804 Y = 37.0395
 (Horizontal Datum is NAD83)
 Distance From River (ft)= 11304
 Reference Elevation (ft NAVD88) = 114.3
 Site = CCID Well
 Land Use =
 Protocol Reference = ATR App F Sec 2
 Agency = CCID
 Measurements:
 1. Type = Electronic Sounder Measurement
 Interval = Quarterly
 Date Range = 3/1/2009 - 11/29/2010
 2. Type =
 Interval =
 Date Range =
 3. Type =
 Interval =
 Date Range =

Description:
 CCID well, no threshold

Root Depth (ft bgs) =
 GS Buffer (ft) =
 Screen Depth (ft bgs) = 7.8-16.8
 Capillary Rise (ft) =
 Historical GW level (ft bgs) = 50
 Field Threshold (ft bgs) =
 Threshold Elevation (ft NAVD88) =

Influences:
 Well 115, San Juan Drain, Canal, Slough

* = assumed value
 bgs = below ground surface
 NR = not recorded

Last Updated:
 5/23/2012
 Preliminary Data

Monitoring Location 118

0 500 1,000 2,000 Feet



Groundwater



Reach = 4A
 River Mile = 176.4
 X = -120.5814 Y = 37.0264
 (Horizontal Datum is NAD83)
 Distance From River (ft)= 14575
 Reference Elevation (ft NAVD88) = 113.6
 Site = CCID Well
 Land Use =
 Protocol Reference = ATR App F Sec 2
 Agency = CCID
 Measurements:
 1. Type = Electronic Sounder Measurement
 Interval = Quarterly
 Date Range = 3/1/2009 - 11/1/2009
 2. Type =
 Interval =
 Date Range =
 3. Type =
 Interval =
 Date Range =

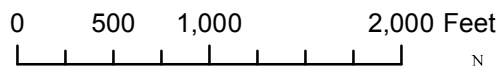
Description:
 CCID well, no threshold

Root Depth (ft bgs) =
 GS Buffer (ft) =
 Screen Depth (ft bgs) = 7.0-16.0
 Capillary Rise (ft) =
 Historical GW level (ft bgs) = 50
 Field Threshold (ft bgs) =
 Threshold Elevation (ft NAVD88) =

Influences:
 San Juan Drain, well

* = assumed value
 bgs = below ground surface
 NR = not recorded

Last Updated:
 5/23/2012
 Preliminary Data



Monitoring Location 119



Reach = 4A
 River Mile = 179.5
 X = -120.5805 Y = 37.0027
 (Horizontal Datum is NAD83)
 Distance From River (ft)= 15725
 Reference Elevation (ft NAVD88) = 117.6
 Site = CCID Well
 Land Use =
 Protocol Reference = ATR App F Sec 2
 Agency = CCID
 Measurements:
 1. Type = Electronic Sounder Measurement
 Interval = Quarterly
 Date Range = Currently Unavailable
 2. Type =
 Interval =
 Date Range =
 3. Type =
 Interval =
 Date Range =

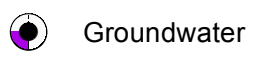
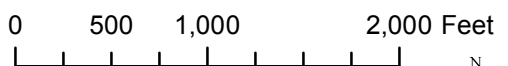
Description:
 CCID well, no threshold

Root Depth (ft bgs) =
 GS Buffer (ft) =
 Screen Depth (ft bgs) = 8.1-17.1
 Capillary Rise (ft) =
 Historical GW level (ft bgs) = 50
 Field Threshold (ft bgs) =
 Threshold Elevation (ft NAVD88) =

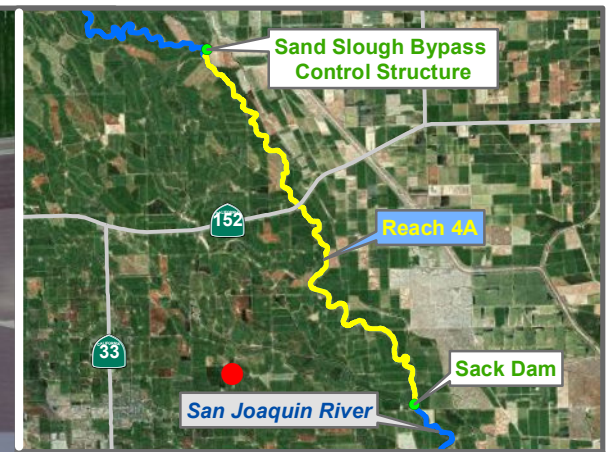
Influences:
 Arroyo Canal

* = assumed value
 bgs = below ground surface
 NR = not recorded

Last Updated:
 5/24/2012
 Preliminary Data



Monitoring Location 120



Reach = 4A
 River Mile = 180
 X = -120.5813 Y = 36.9961
 Distance From River (ft)= 10548
 Reference Elevation (ft NAVD88) = 116.7
 Site = CCID Well
 Land Use =
 Protocol Reference = ATR App F Sec 2
 Agency = CCID
 Measurements:
 1. Type = Electronic Sounder Measurement
 Interval = Quarterly
 Date Range = Currently Unavailable
 2. Type =
 Interval =
 Date Range =
 3. Type =
 Interval =
 Date Range =

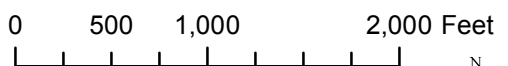
Description:
 CCID well, no threshold


Root Depth (ft bgs) =
 GS Buffer (ft) =
 Screen Depth (ft bgs) = 8.6-17.7
 Capillary Rise (ft) =
 Historical GW level (ft bgs) = 50
 Field Threshold (ft bgs) =
 Threshold Elevation (ft NAVD88) =

Influences:
 Canal

* = assumed value
 bgs = below ground surface
 NR = not recorded

Last Updated:
 5/24/2012
 Preliminary Data



 Groundwater

Monitoring Location 121



Reach = 4A
 River Mile = 181.9
 X = -120.5642 Y = 36.9815
 (Horizontal Datum is NAD83)
 Distance From River (ft) = 10495
 Reference Elevation (ft NAVD88) = 118.3
 Site = CCID Well
 Land Use =
 Protocol Reference = ATR App F Sec 2
 Agency = CCID
 Measurements:
 1. Type = Electronic Sounder Measurement
 Interval = Quarterly
 Date Range = 3/1/2009 - 11/29/2010
 2. Type =
 Interval =
 Date Range =
 3. Type =
 Interval =
 Date Range =

Description:
 CCID well, no threshold

Root Depth (ft bgs) =
 GS Buffer (ft) =
 Screen Depth (ft bgs) = 8.3-17.3
 Capillary Rise (ft) =
 Historical GW level (ft bgs) = 50
 Field Threshold (ft bgs) =
 Threshold Elevation (ft NAVD88) =

Influences:
 Shafter Canal

* = assumed value
 bgs = below ground surface
 NR = not recorded

Last Updated:
 5/23/2012
 Preliminary Data

0 500 1,000 2,000 Feet



Groundwater

Monitoring Location 126



Reach = 4A
 River Mile = 180
 X = -120.5632 Y = 36.9961
 (Horizontal Datum is NAD83)
 Distance From River (ft)= 13515
 Reference Elevation (ft NAVD88) = 117.5
 Site = CCID Well
 Land Use =
 Protocol Reference = ATR App F Sec 2
 Agency = CCID
 Measurements:
 1. Type = Electronic Sounder Measurement
 Interval = Quarterly
 Date Range = 3/1/2009 - 11/1/2009
 2. Type =
 Interval =
 Date Range =
 3. Type =
 Interval =
 Date Range =

Description:
 CCID well, no threshold

Root Depth (ft bgs) =
 GS Buffer (ft) =
 Screen Depth (ft bgs) = 8.3-17.3
 Capillary Rise (ft) =
 Historical GW level (ft bgs) = 50
 Field Threshold (ft bgs) =
 Threshold Elevation (ft NAVD88) =

Influences:

-

* = assumed value
 bgs = below ground surface
 NR = not recorded

Last Updated:
 5/23/2012

Preliminary Data

0 500 1,000 2,000 Feet



 Groundwater

Monitoring Location 127



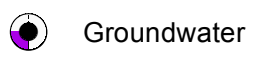
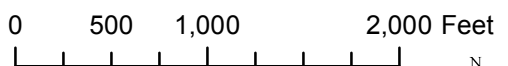
Reach = 4A
 River Mile = 179
 X = -120.5632 Y = 37.0082
 (Horizontal Datum is NAD83)
 Distance From River (ft)= 8512
 Reference Elevation (ft NAVD88) = 115.9
 Site = CCID Well
 Land Use =
 Protocol Reference = ATR App F Sec 2
 Agency = CCID
 Measurements:
 1. Type = Electronic Sounder Measurement
 Interval = Quarterly
 Date Range = 3/1/2009 - 11/29/2010
 2. Type =
 Interval =
 Date Range =
 3. Type =
 Interval =
 Date Range =

Description:
 CCID well, no threshold

Root Depth (ft bgs) =
 GS Buffer (ft) =
 Screen Depth (ft bgs) = 8.6-17.6
 Capillary Rise (ft) =
 Historical GW level (ft bgs) = 50
 Field Threshold (ft bgs) =
 Threshold Elevation (ft NAVD88) =

Influences:
 Arroyo Canal, San Juan Drain

Last Updated:
 5/23/2012
 Preliminary Data



Monitoring Location 128



Reach = 4A
 River Mile = 176.5
 X = -120.5632 Y = 37.0253
 (Horizontal Datum is NAD83)
 Distance From River (ft) = 5225
 Reference Elevation (ft NAVD88) = 114.9
 Site = CCID Well
 Land Use =
 Protocol Reference = ATR App F Sec 2
 Agency = CCID
 Measurements:
 1. Type = Electronic Sounder Measurement
 Interval = Quarterly
 Date Range = 3/1/1983 - 11/29/2010
 2. Type =
 Interval =
 Date Range =
 3. Type =
 Interval =
 Date Range =

Description:
 CCID well, no threshold

Root Depth (ft bgs) =
 GS Buffer (ft) =
 Screen Depth (ft bgs) = 8.2 -17.2
 Capillary Rise (ft) =
 Historical GW level (ft bgs) = 50
 Field Threshold (ft bgs) =
 Threshold Elevation (ft NAVD88) =

Influences:
 Santa Rita Canal

* = assumed value
 bgs = below ground surface
 NR = not recorded

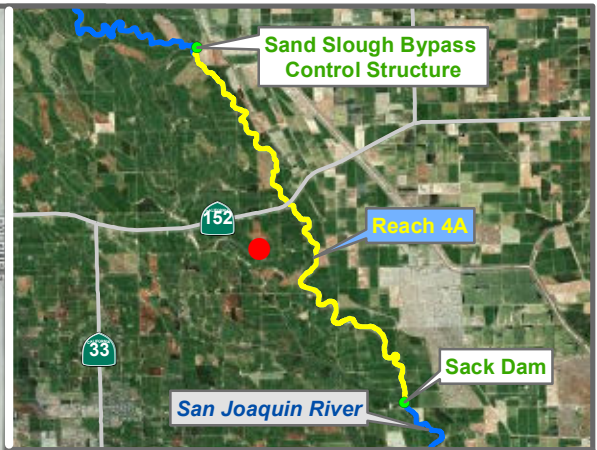
Last Updated:
 5/23/2012
 Preliminary Data

0 500 1,000 2,000 Feet



Groundwater

Monitoring Location 129



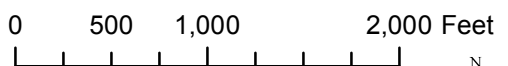
Reach = 4A
 River Mile = 175.4
 X = -120.5633 Y = 37.0398
 (Horizontal Datum is NAD83)
 Distance From River (ft) = 6272
 Reference Elevation (ft NAVD88) = 114.8
 Site = CCID Well
 Land Use = Cotton
 Protocol Reference = ATR App F Sec 2
 Agency = CCID
 Measurements:
 1. Type = Electronic Sounder Measurement
 Interval = Quarterly
 Date Range = 3/1/1983 - 11/29/2010
 2. Type =
 Interval =
 Date Range =
 3. Type =
 Interval =
 Date Range =

Description:
 CCID well, no threshold

 Root Depth (ft bgs) = 4
 GS Buffer (ft) =
 Screen Depth (ft bgs) = 8.6-17.6
 Capillary Rise (ft) =
 Historical GW level (ft bgs) = 50
 Field Threshold (ft bgs) = 4
 Threshold Elevation (ft NAVD88) = 110.8

Influences:
 Santa Rita Slough

 Last Updated:
 5/23/2012
 Preliminary Data



Monitoring Location 130





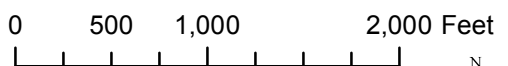
Reach = 4A
 River Mile = 175.4
 X = -120.5437 Y = 37.0400
 (Horizontal Datum is NAD83)
 Distance From River (ft) = 1329
 Reference Elevation (ft NAVD88) = 115.3
 Site = CCID Well
 Land Use = Alfalfa
 Protocol Reference = ATR App F Sec 2
 Agency = CCID
 Measurements:
 1. Type = Electronic Sounder Measurement
 Interval = Quarterly
 Date Range = 3/1/1983 - 9/27/2010
 2. Type =
 Interval =
 Date Range =
 3. Type =
 Interval =
 Date Range =

Description:
 CCID well, no threshold

 Root Depth (ft bgs) = 4.0
 GS Buffer (ft) =
 Screen Depth (ft bgs) = 8.7-17.7
 Capillary Rise (ft) =
 Historical GW level (ft bgs) = 50
 Field Threshold (ft bgs) = 4
 Threshold Elevation (ft NAVD88) = 111.3

Influences:
 Riverside Canal

 Last Updated:
 5/23/2012
 Preliminary Data



Monitoring Location

131



Reach = 4A
 River Mile = 176.5
 X = -120.5450 Y = 37.0242
 (Horizontal Datum is NAD83)
 Distance From River (ft)= 686
 Reference Elevation (ft NAVD88) = 118
 Site = CCID Well
 Land Use = Alfalfa
 Protocol Reference = ATR App F Sec 2
 Agency = CCID

Measurements:
 1. Type = Electronic Sounder Measurement
 Interval = Quarterly
 Date Range = 3/1/1983 - 8/1/2009
 2. Type =
 Interval =
 Date Range =
 3. Type =
 Interval =
 Date Range =

Description:
 CCID well, no threshold

Root Depth (ft bgs) = 4.0
 GS Buffer (ft) =
 Screen Depth (ft bgs) = 7.8-16.8
 Capillary Rise (ft) =
 Historical GW level (ft bgs) = 50
 Field Threshold (ft bgs) = 4
 Threshold Elevation (ft NAVD88) = 114.0

Influences:
 Riverside Canal

* = assumed value
 bgs = below ground surface
 NR = not recorded

Last Updated:
 5/23/2012
 Preliminary Data

0 500 1,000 2,000 Feet



Groundwater

Monitoring Location

132



Reach = 4A
 River Mile = 176.5
 X = -120.5461 Y = 37.0243
 (Horizontal Datum is NAD83)
 Distance From River (ft)= 822
 Reference Elevation (ft NAVD88) = 116.9
 Site = CCID Well
 Land Use = Alfalfa
 Protocol Reference = ATR App F Sec 2
 Agency = CCID
 Measurements:
 1. Type = Electronic Sounder Measurement
 Interval = Quarterly
 Date Range = Currently Unavailable
 2. Type =
 Interval =
 Date Range =
 3. Type =
 Interval =
 Date Range =

Description:
 CCID well, no threshold

Root Depth (ft bgs) = 4.0
 GS Buffer (ft) =
 Screen Depth (ft bgs) = 6.8-15.8
 Capillary Rise (ft) =
 Historical GW level (ft bgs) = 50
 Field Threshold (ft bgs) = 4
 Threshold Elevation (ft NAVD88) = 112.9

Influences:
 Riverside Canal

* = assumed value
 bgs = below ground surface
 NR = not recorded

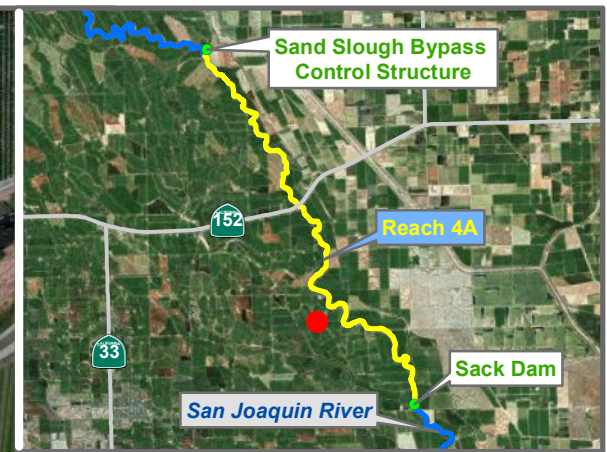
Last Updated:
 5/24/2012
 Preliminary Data

0 500 1,000 2,000 Feet



Groundwater

Monitoring Location 132A



Reach = 4A
 River Mile = 177.4
 X = -120.5428 Y = 37.0141
 (Horizontal Datum is NAD83)
 Distance From River (ft) = 2522
 Reference Elevation (ft NAVD88) = 117
 Site = CCID Well
 Land Use = Grain-Fallow
 Protocol Reference = ATR App F Sec 2
 Agency = CCID

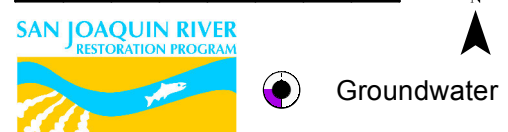
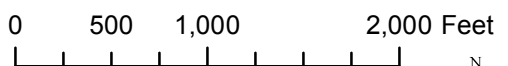
Measurements:
 1. Type = Electronic Sounder Measurement
 Interval = Quarterly
 Date Range = 3/1/1983 - 11/1/2009
 2. Type =
 Interval =
 Date Range =
 3. Type =
 Interval =
 Date Range =

Description:
 CCID well, no threshold

 Root Depth (ft bgs) = 4.0
 GS Buffer (ft) =
 Screen Depth (ft bgs) = 9.5-18.5
 Capillary Rise (ft) =
 Historical GW level (ft bgs) = 50
 Field Threshold (ft bgs) = 4
 Threshold Elevation (ft NAVD88) = 113.0

Influences:
 San Juan Drain

 Last Updated:
 5/23/2012
 Preliminary Data



Monitoring Location

133



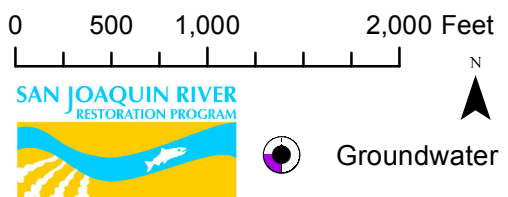
Reach = 4A
 River Mile = 180
 X = -120.5449 Y = 36.9972
 Distance From River (ft) = 7103
 Reference Elevation (ft NAVD88) = 117.6
 Site = CCID Well
 Land Use = Cotton
 Protocol Reference = ATR App F Sec 2
 Agency = CCID
 Measurements:
 1. Type = Electronic Sounder Measurement
 Interval = Quarterly
 Date Range = 3/1/1983 - 11/29/2010
 2. Type =
 Interval =
 Date Range =
 3. Type =
 Interval =
 Date Range =

Description:
 CCID well, no threshold

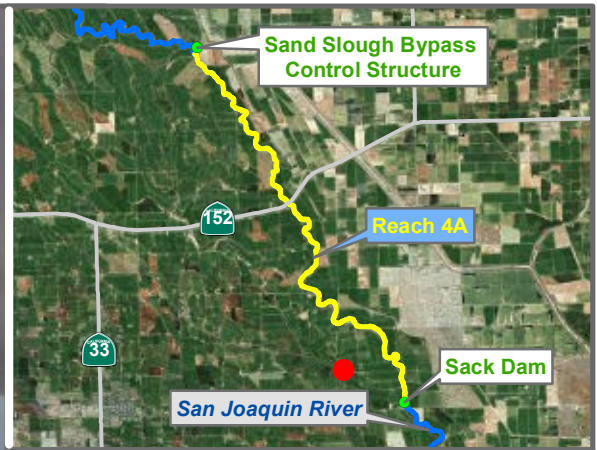
 Root Depth (ft bgs) = 4.0
 GS Buffer (ft) =
 Screen Depth (ft bgs) = 8.2-17.2
 Capillary Rise (ft) =
 Historical GW level (ft bgs) = 50
 Field Threshold (ft bgs) = 4
 Threshold Elevation (ft NAVD88) = 113.6

Influences:
 Canal, San Juan Drain

 Last Updated:
 5/23/2012
 Preliminary Data



Monitoring Location 134



Reach = 4A
 River Mile = 181
 X = -120.5270 Y = 36.9956
 (Horizontal Datum is NAD83)
 Distance From River (ft) = 5670
 Reference Elevation (ft NAVD88) = 119.5
 Site = CCID Well
 Land Use = Cotton
 Protocol Reference = ATR App F Sec 2
 Agency = CCID

Measurements:
 1. Type = Electronic Sounder Measurement
 Interval = Quarterly
 Date Range = 3/1/1983 - 11/29/2010
 2. Type =
 Interval =
 Date Range =
 3. Type =
 Interval =
 Date Range =

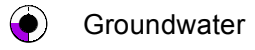
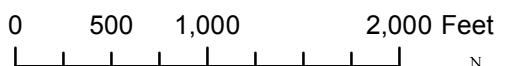
Description:
 CCID well, no threshold

Root Depth (ft bgs) = 4.0
 GS Buffer (ft) = 2.1
 Screen Depth (ft bgs) = 8.1-17.1
 Capillary Rise (ft) =
 Historical GW level (ft bgs) = 50
 Field Threshold (ft bgs) = 4
 Threshold Elevation (ft NAVD88) = 113.4

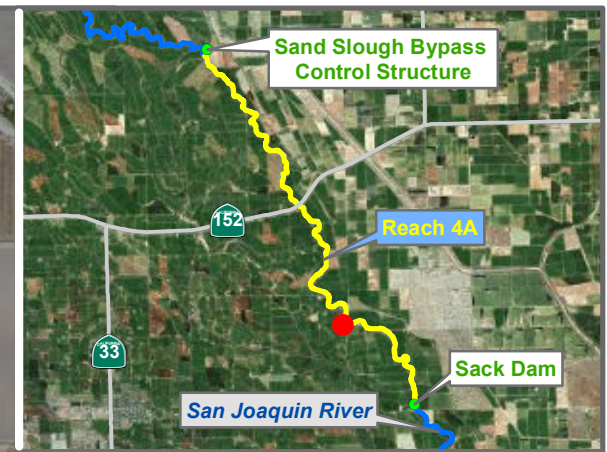
Influences:
 Arroyo Canal

* = assumed value
 bgs = below ground surface
 NR = not recorded

Last Updated:
 5/23/2012
 Preliminary Data



Monitoring Location 143



Reach = 4A
 River Mile = 178.332104769
 X = -120.5314 Y = 37.0126
 (Horizontal Datum is NAD83)
 Distance From River (ft)= 248
 Reference Elevation (ft NAVD88) = 121.3
 Site = CCID Well
 Land Use =
 Protocol Reference = ATR App F Sec 2
 Agency = CCID
 Measurements:
 1. Type = Electronic Sounder Measurement
 Interval = Quarterly
 Date Range = 3/1/1983 - 11/29/2010
 2. Type =
 Interval =
 Date Range =
 3. Type =
 Interval =
 Date Range =

Description:
 2 inch ABS casing. CCID well, no threshold

Root Depth (ft bgs) =
 GS Buffer (ft) = 2.1
 Screen Depth (ft bgs) = 7.1-16.1
 Capillary Rise (ft) =
 Historical GW level (ft bgs) = 50
 Field Threshold (ft bgs) =
 Threshold Elevation (ft NAVD88) =

Influences:
 Poso Canal, SJR

* = assumed value
 bgs = below ground surface
 NR = not recorded

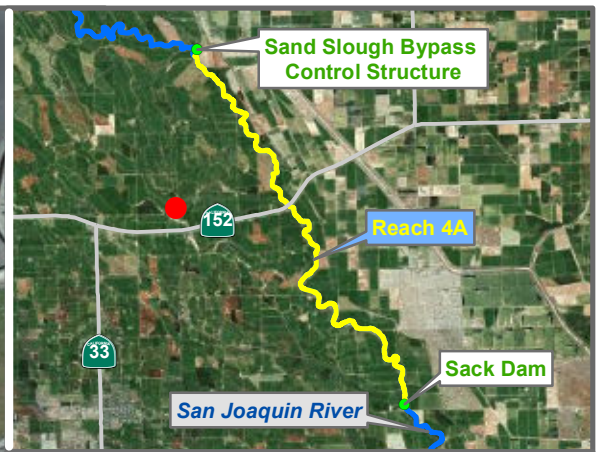
Last Updated:
 5/23/2012
 Preliminary Data

Monitoring Location 144A

0 500 1,000 2,000 Feet



Groundwater



Reach = 4A
 River Mile = 173.9
 X = -120.5999 Y = 37.0556
 (Horizontal Datum is NAD83)
 Distance From River (ft)= 12884
 Reference Elevation (ft NAVD88) = 114.4
 Site = CCID Well
 Land Use =
 Protocol Reference = ATR App F Sec 2
 Agency = CCID
 Measurements:
 1. Type = Electronic Sounder Measurement
 Interval = Quarterly
 Date Range = 3/1/1983 - 11/29/2010
 2. Type =
 Interval =
 Date Range =
 3. Type =
 Interval =
 Date Range =

Description:
 CCID well, no threshold

Root Depth (ft bgs) =
 GS Buffer (ft) =
 Screen Depth (ft bgs) = 9.2-18.2
 Capillary Rise (ft) =
 Historical GW level (ft bgs) = 50
 Field Threshold (ft bgs) =
 Threshold Elevation (ft NAVD88) =

Influences:
 Santa Rita Slough, Santa Rita Canal

* = assumed value
 bgs = below ground surface
 NR = not recorded

Last Updated:
 5/23/2012
 Preliminary Data

Monitoring Location 181

0 500 1,000 2,000 Feet



Groundwater



Reach = 4A
 River Mile = 171.5
 X = -120.5993 Y = 37.0686
 (Horizontal Datum is NAD83)
 Distance From River (ft)= 10530
 Reference Elevation (ft NAVD88) = 110.6
 Site = CCID Well
 Land Use =
 Protocol Reference = ATR App F Sec 2
 Agency = CCID
 Measurements:
 1. Type = Electronic Sounder Measurement
 Interval = Quarterly
 Date Range = 3/1/1983 - 11/1/2008
 2. Type =
 Interval =
 Date Range =
 3. Type =
 Interval =
 Date Range =

Description:
 CCID well, no threshold

Root Depth (ft bgs) =
 GS Buffer (ft) =
 Screen Depth (ft bgs) = 6.1-15.1
 Capillary Rise (ft) =
 Historical GW level (ft bgs) = 50
 Field Threshold (ft bgs) =
 Threshold Elevation (ft NAVD88) =

Influences:
 Santa Rita Drain, well

* = assumed value
 bgs = below ground surface
 NR = not recorded

Last Updated:
 5/23/2012
 Preliminary Data

Monitoring Location 182

0 500 1,000 2,000 Feet



Groundwater



Reach = 4A
 River Mile = 171.2
 X = -120.6000 Y = 37.0822
 (Horizontal Datum is NAD83)
 Distance From River (ft) = 8216
 Reference Elevation (ft NAVD88) = 107.8
 Site = CCID Well
 Land Use =
 Protocol Reference = ATR App F Sec 2
 Agency = CCID
 Measurements:
 1. Type = Electronic Sounder Measurement
 Interval = Quarterly
 Date Range = 3/1/1983 - 11/1/2009
 2. Type =
 Interval =
 Date Range =
 3. Type =
 Interval =
 Date Range =

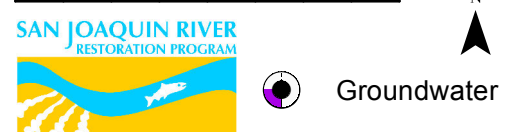
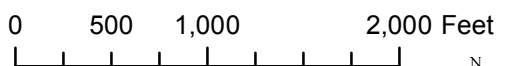
Description:
 CCID well, no threshold

Root Depth (ft bgs) =
 GS Buffer (ft) =
 Screen Depth (ft bgs) = 7.4-16.4
 Capillary Rise (ft) =
 Historical GW level (ft bgs) = 50
 Field Threshold (ft bgs) =
 Threshold Elevation (ft NAVD88) =

Influences:
 Santa Rita Ditch/Drain

* = assumed value
 bgs = below ground surface
 NR = not recorded

Last Updated:
 5/23/2012
 Preliminary Data



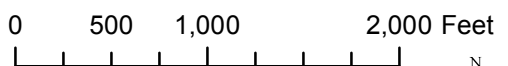
Monitoring Location 183



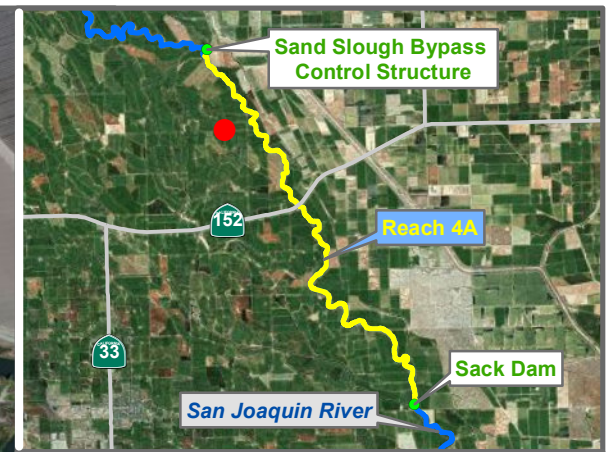
Reach = 4A
 River Mile = 168.9
 X = -120.6027 Y = 37.0961
 (Horizontal Datum is NAD83)
 Distance From River (ft)= 5665
 Reference Elevation (ft NAVD88) = 104.2
 Site = CCID Well
 Land Use =
 Protocol Reference = ATR App F Sec 2
 Agency = CCID
 Measurements:
 1. Type = Electronic Sounder Measurement
 Interval = Quarterly
 Date Range = 3/1/1983 - 11/1/2008
 2. Type =
 Interval =
 Date Range =
 3. Type =
 Interval =
 Date Range =

Merced County
 Left Bank
 Status = Existing
 Description:
 CCID well, no threshold
 Root Depth (ft bgs) =
 GS Buffer (ft) = 2.9
 Screen Depth (ft bgs) = 6.7-15.7
 Capillary Rise (ft) =
 Historical GW level (ft bgs) = 50
 Field Threshold (ft bgs) =
 Threshold Elevation (ft NAVD88) =

Influences:
 Drainage canals, Santa Rita Drain no. 1 , slough
 Last Updated:
 5/23/2012
 Preliminary Data
 * = assumed value
 bgs = below ground surface
 NR = not recorded



Monitoring Location 184



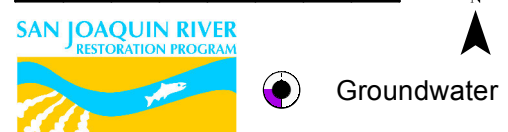
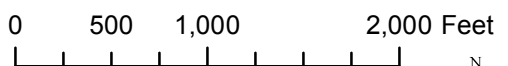
Reach = 4A
 River Mile = 171
 X = -120.5819 Y = 37.0833
 (Horizontal Datum is NAD83)
 Distance From River (ft) = 3570
 Reference Elevation (ft NAVD88) = 108
 Site = CCID Well
 Land Use = Cotton
 Protocol Reference = ATR App F Sec 2
 Agency = CCID

Measurements:
 1. Type = Electronic Sounder Measurement
 Interval = Quarterly
 Date Range = 11/1/1982 - 12/6/2011
 2. Type =
 Interval =
 Date Range =
 3. Type =
 Interval =
 Date Range =

Description:
 Root Depth (ft bgs) = 4.0
 GS Buffer (ft) = 2.0
 Screen Depth (ft bgs) = 9.0-18.0
 Capillary Rise (ft) = 1.0*
 Historical GW level (ft bgs) = 50
 Field Threshold (ft bgs) = 3.5
 Threshold Elevation (ft NAVD88) = 102.5

Influences:
 Wood slough, Slough

Last Updated:
 5/23/2012
 Preliminary Data



Monitoring Location 186A

* = assumed value
 bgs = below ground surface
 NR = not recorded



Reach = 4A
 River Mile = 173
 X = -120.5812 Y = 37.0661
 (Horizontal Datum is NAD83)
 Distance From River (ft)= 6448
 Reference Elevation (ft NAVD88) = 108.5
 Site = CCID Well
 Land Use =
 Protocol Reference = ATR App F Sec 2
 Agency = CCID
 Measurements:
 1. Type = Electronic Sounder Measurement
 Interval = Quarterly
 Date Range = 3/1/2009 - 11/29/2010
 2. Type =
 Interval =
 Date Range =
 3. Type =
 Interval =
 Date Range =

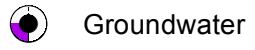
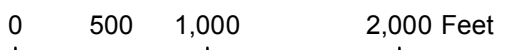
Description:
 CCID well, no threshold

Root Depth (ft bgs) =
 GS Buffer (ft) = 0.3
 Screen Depth (ft bgs) = 6.0-15.0
 Capillary Rise (ft) =
 Historical GW level (ft bgs) = 50
 Field Threshold (ft bgs) =
 Threshold Elevation (ft NAVD88) =

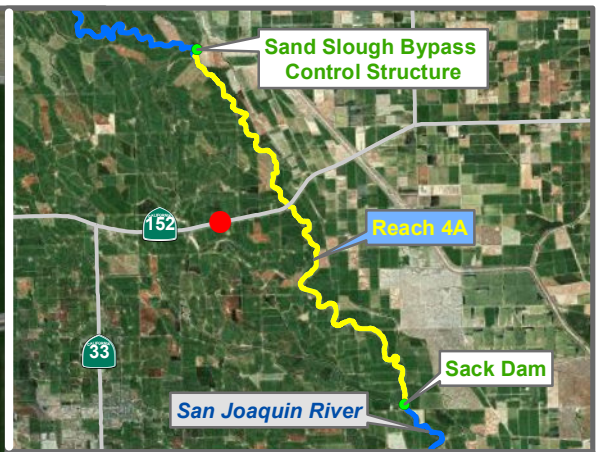
Influences:
 Santa Rita canal

* = assumed value
 bgs = below ground surface
 NR = not recorded

Last Updated:
 5/23/2012
 Preliminary Data



Monitoring Location 187



Reach = 4A
 River Mile = 173.5
 X = -120.5805 Y = 37.0506
 Distance From River (ft) = 8270
 Reference Elevation (ft NAVD88) = 112.4
 Site = CCID Well
 Land Use = UNMAPPED
 Protocol Reference = ATR App F Sec 2
 Agency = CCID
 Measurements:
 1. Type = Electronic Sounder Measurement
 Interval = Quarterly
 Date Range = 3/1/1983 - 11/29/2010
 2. Type =
 Interval =
 Date Range =
 3. Type =
 Interval =
 Date Range =

Description:
 CCID well, no threshold

Root Depth (ft bgs) = Needs More Info
 GS Buffer (ft) =
 Screen Depth (ft bgs) = 9.1-18.1
 Capillary Rise (ft) =
 Historical GW level (ft bgs) = 50
 Field Threshold (ft bgs) =
 Threshold Elevation (ft NAVD88) =

Influences:
 Landing Strip

* = assumed value
 bgs = below ground surface
 NR = not recorded

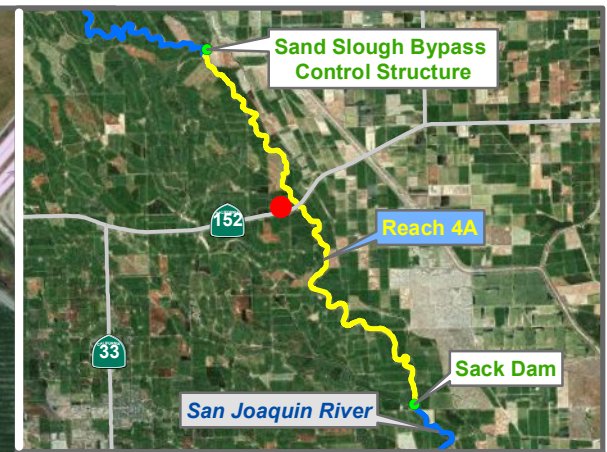
Last Updated:
 5/23/2012
 Preliminary Data

0 500 1,000 2,000 Feet



Groundwater

Monitoring Location 188A



Reach = 4A
 River Mile = 173.7
 X = -120.5576 Y = 37.0552
 (Horizontal Datum is NAD83)
 Distance From River (ft)= 1756
 Reference Elevation (ft NAVD88) = 115.3
 Site = CCID Well
 Land Use = Tomato
 Protocol Reference = ATR App F Sec 2
 Agency = CCID
 Measurements:
 1. Type = Electronic Sounder Measurement
 Interval = Quarterly
 Date Range = Currently Unavailable
 2. Type =
 Interval =
 Date Range =
 3. Type =
 Interval =
 Date Range =

Description:
 CCID well, no threshold

Root Depth (ft bgs) = 3.0
 GS Buffer (ft) =
 Screen Depth (ft bgs) = 7.0-16.0
 Capillary Rise (ft) =
 Historical GW level (ft bgs) = 50
 Field Threshold (ft bgs) = 3
 Threshold Elevation (ft NAVD88) = 112.3

Influences:
 Riverside Canal

* = assumed value
 bgs = below ground surface
 NR = not recorded

Last Updated:
 5/24/2012
 Preliminary Data

0 500 1,000 2,000 Feet



Groundwater

Monitoring Location 189



Reach = 4A
 River Mile = 172.7
 X = -120.5630 Y = 37.0689
 (Horizontal Datum is NAD83)
 Distance From River (ft)= 1993
 Reference Elevation (ft NAVD88) = 113.3
 Site = CCID Well
 Land Use = Cotton
 Protocol Reference = ATR App F Sec 2
 Agency = CCID
 Measurements:
 1. Type = Electronic Sounder Measurement
 Interval = Quarterly
 Date Range = 8/1/2009 - 9/27/2010
 2. Type =
 Interval =
 Date Range =
 3. Type =
 Interval =
 Date Range =

Description:
 CCID well, no threshold

Root Depth (ft bgs) = 4.0
 GS Buffer (ft) =
 Screen Depth (ft bgs) = 9.1-18.1
 Capillary Rise (ft) =
 Historical GW level (ft bgs) = 50
 Field Threshold (ft bgs) = 4
 Threshold Elevation (ft NAVD88) = 109.3

Influences:
 Well, Riverside Canal, Canal

* = assumed value
 bgs = below ground surface
 NR = not recorded

Last Updated:
 5/23/2012
 Preliminary Data

0 500 1,000 2,000 Feet



Groundwater

Monitoring Location 190



Reach = 4A
 River Mile = 171.1
 X = -120.5721 Y = 37.0854
 (Horizontal Datum is NAD83)
 Distance From River (ft) = 623
 Reference Elevation (ft NAVD88) = 110.9
 Site = CCID Well
 Land Use = Cotton
 Protocol Reference = ATR App F Sec 2
 Agency = CCID

Measurements:
 1. Type = Electronic Sounder Measurement
 Interval = Quarterly
 Date Range = 3/1/1983 - 12/6/2011
 2. Type =
 Interval =
 Date Range =
 3. Type =
 Interval =
 Date Range =

Description:

Root Depth (ft bgs) = 4.0
 GS Buffer (ft) = 2.9
 Screen Depth (ft bgs) = 7.9-16.9
 Capillary Rise (ft) = 1.0*
 Historical GW level (ft bgs) = 50
 Field Threshold (ft bgs) = 5
 Threshold Elevation (ft NAVD88) = 103.0

Influences:
 Riverside Canal

* = assumed value
 bgs = below ground surface
 NR = not recorded

Last Updated:
 5/23/2012
 Preliminary Data

0 500 1,000 2,000 Feet



Groundwater

Monitoring Location 191



Reach = 4A
 River Mile = 181.4
 X = -120.5024 Y = 36.9922
 (Horizontal Datum is NAD83)
 Distance From River (ft)= 250
 Reference Elevation (ft NAVD88) = 125.9
 Site = CCID Well
 Land Use =
 Protocol Reference = ATR App F Sec 2
 Agency = CCID
 Measurements:
 1. Type = Electronic Sounder Measurement
 Interval = Quarterly
 Date Range = Currently Unavailable
 2. Type =
 Interval =
 Date Range =
 3. Type =
 Interval =
 Date Range =

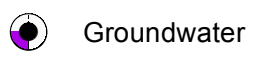
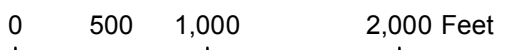
Description:
 CCID well, no threshold

Root Depth (ft bgs) =
 GS Buffer (ft) =
 Screen Depth (ft bgs) = 6.6-15.6
 Capillary Rise (ft) =
 Historical GW level (ft bgs) = 50
 Field Threshold (ft bgs) =
 Threshold Elevation (ft NAVD88) =

Influences:
 Riverside Canal

* = assumed value
 bgs = below ground surface
 NR = not recorded

Last Updated:
 5/24/2012
 Preliminary Data



Monitoring Location 350



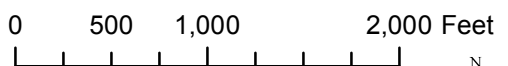
Reach = 4A
 River Mile = 173.1
 X = -120.5568 Y = 37.0654
 (Horizontal Datum is NAD83)
 Distance From River (ft) = 159
 Reference Elevation (ft NAVD88) = 113.3
 Site = CCID Well
 Land Use = Cotton
 Protocol Reference = ATR App F Sec 2
 Agency = CCID
 Measurements:
 1. Type = Electronic Sounder Measurement
 Interval = Quarterly
 Date Range = Not Available
 2. Type =
 Interval =
 Date Range =
 3. Type =
 Interval =
 Date Range =

Description:

 Root Depth (ft bgs) = 4.0
 GS Buffer (ft) =
 Screen Depth (ft bgs) =
 Capillary Rise (ft) =
 Historical GW level (ft bgs) = 50
 Field Threshold (ft bgs) = 4
 Threshold Elevation (ft NAVD88) = 109.3

Influences:
 Riverside Canal, SJR

 Last Updated:
 5/24/2012
 Preliminary Data



Monitoring Location

385



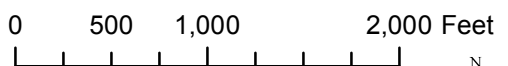
Reach = 4A
 River Mile = 172.2
 X = -120.5584 Y = 37.0750
 (Horizontal Datum is NAD83)
 Distance From River (ft) = 203
 Reference Elevation (ft NAVD88) = 110.9
 Site = CCID Well
 Land Use =
 Protocol Reference = ATR App F Sec 2
 Agency = CCID
 Measurements:
 1. Type = Electronic Sounder Measurement
 Interval = Quarterly
 Date Range = Not Available
 2. Type =
 Interval =
 Date Range =
 3. Type =
 Interval =
 Date Range =

Description:

 Root Depth (ft bgs) =
 GS Buffer (ft) =
 Screen Depth (ft bgs) =
 Capillary Rise (ft) =
 Historical GW level (ft bgs) = 50
 Field Threshold (ft bgs) =
 Threshold Elevation (ft NAVD88) =

Influences:
 Riverside Canal, SJR

 Last Updated:
 5/24/2012
 Preliminary Data



Monitoring Location

386



Reach = 4A
 River Mile = 171.5
 X = -120.5661 Y = 37.0806
 (Horizontal Datum is NAD83)
 Distance From River (ft) = 241
 Reference Elevation (ft NAVD88) = 109.4
 Site = CCID Well
 Land Use =
 Protocol Reference = ATR App F Sec 2
 Agency = CCID
 Measurements:
 1. Type = Electronic Sounder Measurement
 Interval = Quarterly
 Date Range = Currently Unavailable
 2. Type =
 Interval =
 Date Range =
 3. Type =
 Interval =
 Date Range =

Description:

Root Depth (ft bgs) =
 GS Buffer (ft) =
 Screen Depth (ft bgs) =
 Capillary Rise (ft) =
 Historical GW level (ft bgs) = 50
 Field Threshold (ft bgs) =
 Threshold Elevation (ft NAVD88) =

Influences:
 Riverside Canal, SJR

* = assumed value
 bgs = below ground surface
 NR = not recorded

Last Updated:
 5/24/2012
 Preliminary Data

0 500 1,000 2,000 Feet



Groundwater

Monitoring Location 387



Reach = 4A
 River Mile = 172
 X = -120.5662 Y = 37.0726
 (Horizontal Datum is NAD83)
 Distance From River (ft) = 1642
 Reference Elevation (ft NAVD88) = 112.935
 Site = CCID Well
 Land Use = Cotton
 Protocol Reference = ATR App F Sec 2
 Agency = CCID

Merced County
 Left Bank
 Status = Existing

Measurements:
 1. Type = Electronic Sounder Measurement
 Interval = Quarterly
 Date Range = Currently Unavailable
 2. Type =
 Interval =
 Date Range =
 3. Type =
 Interval =
 Date Range =

Description:

Root Depth (ft bgs) = 4.0
 GS Buffer (ft) =
 Screen Depth (ft bgs) =
 Capillary Rise (ft) =
 Historical GW level (ft bgs) = 50
 Field Threshold (ft bgs) = 4
 Threshold Elevation (ft NAVD88) = 110.9

Influences:
 Drain

* = assumed value
 bgs = below ground surface
 NR = not recorded

Last Updated:
 5/24/2012
 Preliminary Data

0 500 1,000 2,000 Feet



Groundwater

Monitoring Location 388



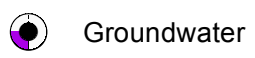
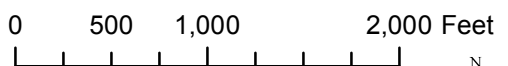
Reach = 4A
 River Mile = 171.8
 X = -120.5703 Y = 37.0769
 (Horizontal Datum is NAD83)
 Distance From River (ft)= 1914
 Reference Elevation (ft NAVD88) = 111.668
 Site = CCID Well
 Land Use = Cotton
 Protocol Reference = ATR App F Sec 2
 Agency = CCID
 Measurements:
 1. Type = Electronic Sounder Measurement
 Interval = Quarterly
 Date Range = Not Available
 2. Type =
 Interval =
 Date Range =
 3. Type =
 Interval =
 Date Range =

Description:

 Root Depth (ft bgs) = 4.0
 GS Buffer (ft) =
 Screen Depth (ft bgs) =
 Capillary Rise (ft) =
 Historical GW level (ft bgs) = 50
 Field Threshold (ft bgs) = 4
 Threshold Elevation (ft NAVD88) = 109.5

Influences:
 Drain

 Last Updated:
 5/24/2012
 Preliminary Data



Monitoring Location 389



Reach = 4A
 Merced County
 River Mile = 171.2
 Left Bank
 X = -120.5723 Y = 37.0829 Status = Existing
 (Horizontal Datum is NAD83)
 Distance From River (ft)= 1277
 Reference Elevation (ft NAVD88) = 110.337
 Site = CCID Well
 Land Use = Alfalfa
 Protocol Reference = ATR App F Sec 2
 Agency = CCID

Measurements:
 1. Type = Electronic Sounder Measurement
 Interval = Quarterly
 Date Range = Currently Unavailable
 2. Type =
 Interval =
 Date Range =
 3. Type =
 Interval =
 Date Range =

Description:

Root Depth (ft bgs) = 4.0
 GS Buffer (ft) =
 Screen Depth (ft bgs) =
 Capillary Rise (ft) =
 Historical GW level (ft bgs) = 50
 Field Threshold (ft bgs) = 4
 Threshold Elevation (ft NAVD88) = 108.5

Influences:
 Wood Slough

* = assumed value
 bgs = below ground surface
 NR = not recorded

Last Updated:
 5/24/2012
 Preliminary Data

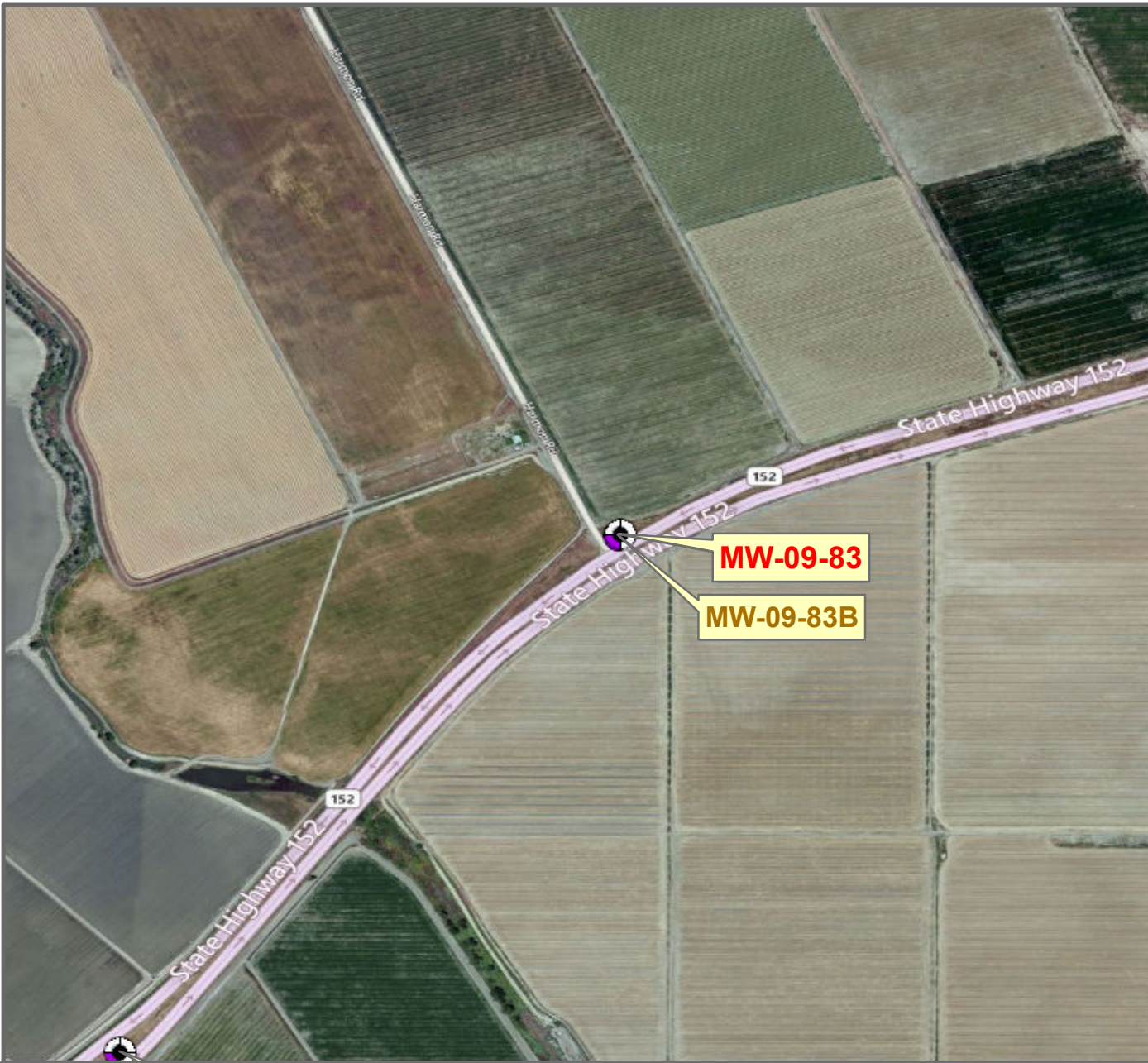
0 500 1,000 2,000 Feet



Groundwater

Monitoring Location

390



Reach = 4A
 River Mile = 173.9
 X = -120.5391 Y = 37.0663
 (Horizontal Datum is NAD83)
 Distance From River (ft)= 4499
 Reference Elevation (ft NAVD88) = 114.8
 Site = Hwy. 152
 Land Use = Public Land
 Protocol Reference = ATR App F Sec 2
 Agency = USBR
 Measurements:
 1. Type = Electronic Sounder Measurement
 Interval = Monthly
 Date Range = 11/17/2009 - 1/6/2012
 2. Type = Datalogger
 Interval = Hourly
 Date Range = 11/20/2009 - 2/28/2011
 3. Type =
 Interval =
 Date Range =

Description:
 2 inch PVC casing FM

Root Depth (ft bgs) = 4.0
 GS Buffer (ft) = 0.0*
 Screen Depth (ft bgs) = 51.5 - 61.5
 Capillary Rise (ft) = 1.0
 Historical GW level (ft bgs) = 50
 Field Threshold (ft bgs) = 5
 Threshold Elevation (ft NAVD88) = 109.8

Influences:

-

* = assumed value
 bgs = below ground surface
 NR = not recorded

Last Updated:
 5/23/2012

Preliminary Data

0 500 1,000 2,000 Feet

SAN JOAQUIN RIVER RESTORATION PROGRAM



Groundwater

Monitoring Location MW-09-83



Reach = 4A
 River Mile = 173.9
 X = -120.5391 Y = 37.0663
 (Horizontal Datum is NAD83)
 Distance From River (ft)= 4492
 Reference Elevation (ft NAVD88) = 115
 Site = Hwy. 152
 Land Use = Public Land
 Protocol Reference = ATR App F Sec 2
 Agency = USBR

Merced County
 Right Bank
 Status = Existing

- Measurements:
- Type = Electronic Sounder Measurement
Interval = Monthly
Date Range = 2/28/2011 - 1/6/2012
 - Type =
Interval =
Date Range =
 - Type =
Interval =
Date Range =

Description:
2 inch PVC casing FM

Root Depth (ft bgs) = 4.0
 GS Buffer (ft) = 0.0*
 Screen Depth (ft bgs) = 22.5 - 42.5
 Capillary Rise (ft) = 1.0
 Historical GW level (ft bgs) = 50
 Field Threshold (ft bgs) = 5
 Threshold Elevation (ft NAVD88) = 110.0

Influences:
-

Last Updated:
5/23/2012

* = assumed value
 bgs = below ground surface
 NR = not recorded

Preliminary Data

0 500 1,000 2,000 Feet



Groundwater

Monitoring Location MW-09-83B



Reach = 4A
 River Mile = 173.9
 X = -120.5477 Y = 37.0574
 (Horizontal Datum is NAD83)
 Distance From River (ft) = 822
 Reference Elevation (ft NAVD88) = 115.8
 Site = Hwy. 152
 Land Use = Public Land
 Protocol Reference = ATR App F Sec 2
 Agency = USBR
 Measurements:
 1. Type = Electronic Sounder Measurement
 Interval = Weekly - Priority
 Date Range = 10/29/2009 - 1/6/2012
 2. Type = Datalogger
 Interval = Hourly
 Date Range = 11/19/2009 - 2/28/2011
 3. Type =
 Interval =
 Date Range =

Description:
 2 inch PVC casing FM

Root Depth (ft bgs) = 4.0
 GS Buffer (ft) = 3.4
 Screen Depth (ft bgs) = 32.0 - 52.0
 Capillary Rise (ft) = 1.0
 Historical GW level (ft bgs) = 50
 Field Threshold (ft bgs) = 5
 Threshold Elevation (ft NAVD88) = 107.4

Influences:

-

* = assumed value
 bgs = below ground surface
 NR = not recorded

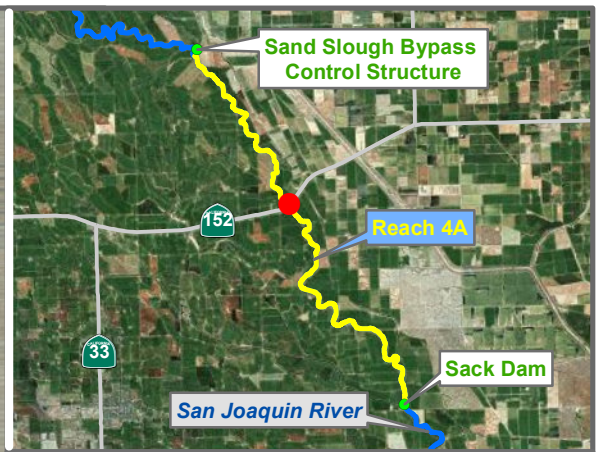
Last Updated:
 5/23/2012
 Preliminary Data

0 500 1,000 2,000 Feet



Groundwater

Monitoring Location MW-09-84



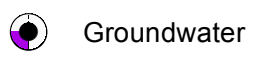
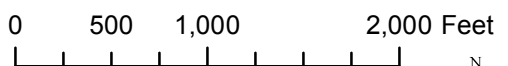
Reach = 4A
 River Mile = 173.9
 X = -120.5492 Y = 37.0564
 (Horizontal Datum is NAD83)
 Distance From River (ft) = 252
 Reference Elevation (ft NAVD88) = 120.8
 Site = Hwy. 152
 Land Use = Public Land
 Protocol Reference = ATR App F Sec 2
 Agency = USBR
 Measurements:
 1. Type = Electronic Sounder Measurement
 Interval = Monthly
 Date Range = 10/29/2009 - 1/6/2012
 2. Type = Datalogger
 Interval = Hourly
 Date Range = 11/19/2009 - 2/28/2011
 3. Type =
 Interval =
 Date Range =

Description:
 2 inch PVC casing FM

 Root Depth (ft bgs) = 4.0
 GS Buffer (ft) = 7.1
 Screen Depth (ft bgs) = 52.0 - 82.0
 Capillary Rise (ft) = 1.0
 Historical GW level (ft bgs) = 50
 Field Threshold (ft bgs) = 5
 Threshold Elevation (ft NAVD88) = 108.7

Influences:
 SJR

Last Updated:
 5/23/2012
 Preliminary Data



Monitoring Location MW-09-85



Reach = 4A
 River Mile = 173.9
 X = -120.5493 Y = 37.0564
 (Horizontal Datum is NAD83)
 Distance From River (ft) = 252
 Reference Elevation (ft NAVD88) = 120.6
 Site = Hwy. 152
 Land Use = Public Land
 Protocol Reference = ATR App F Sec 2
 Agency = USBR
 Measurements:
 1. Type = Electronic Sounder Measurement
 Interval = Monthly
 Date Range = 2/25/2010 - 1/6/2012
 2. Type = Datalogger
 Interval = Hourly
 Date Range = 11/19/2009 - 2/28/2011
 3. Type =
 Interval =
 Date Range =

Description:
 2 inch PVC casing FM

Root Depth (ft bgs) = 4.0
 GS Buffer (ft) = 6.9
 Screen Depth (ft bgs) = 9.5 - 29.5
 Capillary Rise (ft) = 1.0
 Historical GW level (ft bgs) = 50
 Field Threshold (ft bgs) = 5
 Threshold Elevation (ft NAVD88) = 108.7

Influences:
 SJR

* = assumed value
 bgs = below ground surface
 NR = not recorded

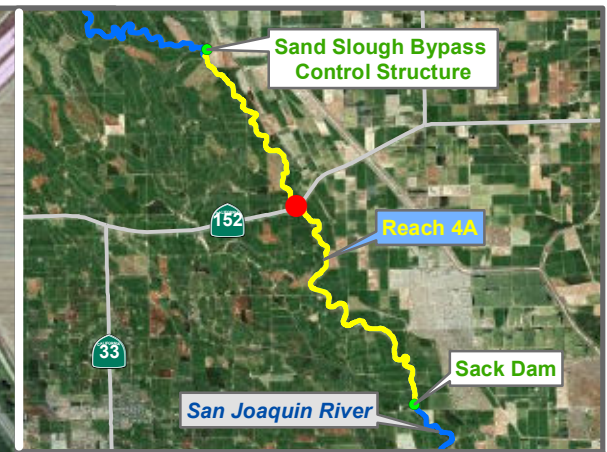
Last Updated:
 5/23/2012
 Preliminary Data

0 500 1,000 2,000 Feet



Groundwater

Monitoring Location MW-09-85B



Reach = 4A
 River Mile = 173.9
 X = -120.5506 Y = 37.0556
 (Horizontal Datum is NAD83)
 Distance From River (ft) = 251
 Reference Elevation (ft NAVD88) = 121
 Site = Hwy. 152
 Land Use = Public Land
 Protocol Reference = ATR App F Sec 2
 Agency = USBR
 Measurements:
 1. Type = Electronic Sounder Measurement
 Interval = Monthly
 Date Range = 11/17/2009 - 1/6/2012
 2. Type = Datalogger
 Interval = Hourly
 Date Range = 2/17/2010 - 2/28/2011
 3. Type =
 Interval =
 Date Range =

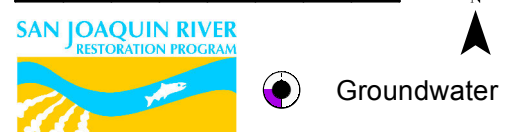
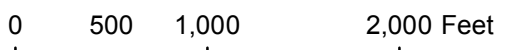
Description:
 2 inch PVC casing FM

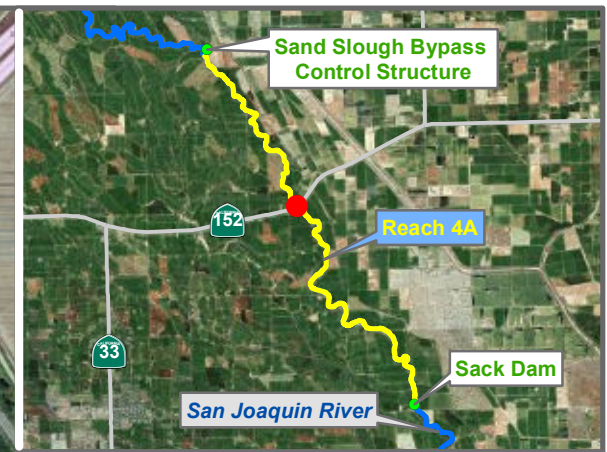
 Root Depth (ft bgs) = 4.0
 GS Buffer (ft) = 8.0
 Screen Depth (ft bgs) = 52.0 - 72.0
 Capillary Rise (ft) = 1.0
 Historical GW level (ft bgs) = 50
 Field Threshold (ft bgs) = 5
 Threshold Elevation (ft NAVD88) = 108.0

Influences:
 SJR

 Last Updated:
 5/23/2012
 Preliminary Data

Monitoring Location MW-09-86





Reach = 4A
 River Mile = 173.9
 X = -120.5506 Y = 37.0555
 (Horizontal Datum is NAD83)
 Distance From River (ft) = 249
 Reference Elevation (ft NAVD88) = 120.9
 Site = Hwy. 152
 Land Use = Public Land
 Protocol Reference = ATR App F Sec 2
 Agency = USBR
 Measurements:
 1. Type = Electronic Sounder Measurement
 Interval = Monthly
 Date Range = 4/8/2010 - 1/6/2012
 2. Type = Datalogger
 Interval = Hourly
 Date Range = 4/23/2010 - 10/21/2010
 3. Type =
 Interval =
 Date Range =

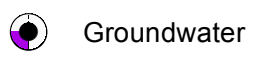
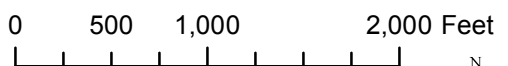
Description:
 2 inch PVC casing FM

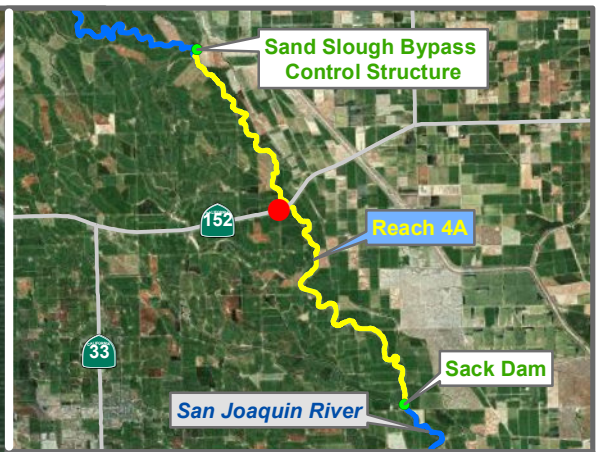
 Root Depth (ft bgs) = 4.0
 GS Buffer (ft) = 7.9
 Screen Depth (ft bgs) = 14.5 - 24.5
 Capillary Rise (ft) = 1.0
 Historical GW level (ft bgs) = 50
 Field Threshold (ft bgs) = 5
 Threshold Elevation (ft NAVD88) = 108.0

Influences:
 SJR

 Last Updated:
 5/23/2012
 Preliminary Data

Monitoring Location MW-09-86B

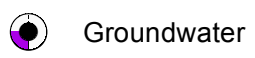
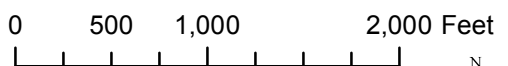




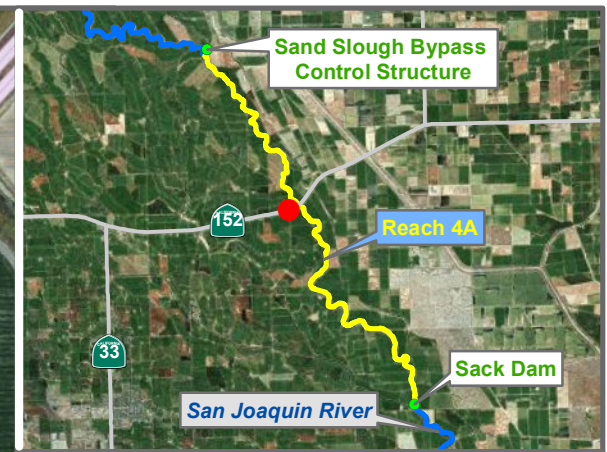
Reach = 4A
 River Mile = 173.9
 X = -120.5539 Y = 37.0542
 (Horizontal Datum is NAD83)
 Distance From River (ft) = 1332
 Reference Elevation (ft NAVD88) = 115.03
 Site = Hwy. 152
 Land Use = Public Land
 Protocol Reference = ATR App F Sec 2
 Agency = USBR
 Measurements:
 1. Type = Electronic Sounder Measurement
 Interval = Monthly
 Date Range = 11/17/2009 - 1/6/2012
 2. Type = Datalogger
 Interval = Hourly
 Date Range = 11/20/2009 - 2/28/2011
 3. Type =
 Interval =
 Date Range =

Merced County
 Left Bank
 Status = Existing
 Description:
 2 inch PVC casing FM
 Root Depth (ft bgs) = 4.0
 GS Buffer (ft) = 2.0
 Screen Depth (ft bgs) = 37.0 - 47.0
 Capillary Rise (ft) = 0.5
 Historical GW level (ft bgs) = 50
 Field Threshold (ft bgs) = 4.5
 Threshold Elevation (ft NAVD88) = 108.6

Influences:
 -
 Last Updated:
 5/23/2012
 Preliminary Data
 * = assumed value
 bgs = below ground surface
 NR = not recorded



Monitoring Location MW-09-87



Reach = 4A
 River Mile = 173.9
 X = -120.5539 Y = 37.0542
 (Horizontal Datum is NAD83)
 Distance From River (ft) = 1334
 Reference Elevation (ft NAVD88) = 115
 Site = Hwy. 152
 Land Use = Public Land
 Protocol Reference = ATR App F Sec 2
 Agency = USBR

Measurements:
 1. Type = Electronic Sounder Measurement
 Interval = Weekly - Priority
 Date Range = 5/23/2011 - 1/6/2012
 2. Type =
 Interval =
 Date Range =
 3. Type =
 Interval =
 Date Range =

Description:
 2 inch PVC casing FM

Root Depth (ft bgs) = 4.0
 GS Buffer (ft) = 1.9
 Screen Depth (ft bgs) = 10.0 - 15.0
 Capillary Rise (ft) = 0.5
 Historical GW level (ft bgs) = 50
 Field Threshold (ft bgs) = 4.2
 Threshold Elevation (ft NAVD88) = 109.9

Influences:

-

* = assumed value
 bgs = below ground surface
 NR = not recorded

Last Updated:
 5/23/2012
 Preliminary Data

0 500 1,000 2,000 Feet



Groundwater

Monitoring Location MW-09-87B



Reach = 4A
 River Mile = 173.9
 X = -120.5717 Y = 37.0515
 (Horizontal Datum is NAD83)
 Distance From River (ft) = 6013
 Reference Elevation (ft NAVD88) = 112
 Site = Hwy. 152
 Land Use = Public Land
 Protocol Reference = ATR App F Sec 2
 Agency = USBR
 Measurements:
 1. Type = Electronic Sounder Measurement
 Interval = Monthly
 Date Range = Currently Unavailable
 2. Type = Datalogger
 Interval = Hourly
 Date Range = Currently Unavailable
 3. Type =
 Interval =
 Date Range =

Description:
 2 inch PVC casing FM

Root Depth (ft bgs) = 4.0
 GS Buffer (ft) = 2.2
 Screen Depth (ft bgs) = 25.0 - 45.0
 Capillary Rise (ft) = 1.0
 Historical GW level (ft bgs) = 50
 Field Threshold (ft bgs) = 5
 Threshold Elevation (ft NAVD88) = 104.8

Influences:

-

* = assumed value
 bgs = below ground surface
 NR = not recorded

Last Updated:
 5/24/2012
 Preliminary Data

0 500 1,000 2,000 Feet



Groundwater

Monitoring Location MW-09-88



Reach = 4A
 River Mile = 170
 X = -120.6174 Y = 37.0686
 (Horizontal Datum is NAD83)
 Distance From River (ft)= 15178
 Reference Elevation (ft NAVD88) = 107.761
 Site = Roxbury Road
 Land Use = Assumed Annual Crop
 Protocol Reference = ATR App F Sec 2
 Agency = USBR

Merced County
 Left Bank
 Status = Existing

Measurements:

1. Type = Electronic Sounder Measurement
Interval = Monthly
Date Range = Currently Unavailable
2. Type =
Interval =
Date Range =
3. Type =
Interval =
Date Range =

Description:

2 inch PVC casing FM

Root Depth (ft bgs) = 4.0
 GS Buffer (ft) = 0.0*
 Screen Depth (ft bgs) = 15.0 - 30.0
 Capillary Rise (ft) = 1.0*
 Historical GW level (ft bgs) = 50
 Field Threshold (ft bgs) = 5
 Threshold Elevation (ft NAVD88) = 102.5

Influences:

Drain

* = assumed value
 bgs = below ground surface
 NR = not recorded

Last Updated:
 5/24/2012

Preliminary Data

0 500 1,000 2,000 Feet



Groundwater

Monitoring Location MW-10-115



Reach = 4A
 River Mile = 170
 X = -120.5647 Y = 37.1278
 (Horizontal Datum is NAD83)
 Distance From River (ft) = 4971
 Reference Elevation (ft NAVD88) = 104.68
 Site = El Nido Road
 Land Use = Assumed Annual Crop
 Protocol Reference = ATR App F Sec 2
 Agency = USBR

Merced County
 Right Bank
 Status = Existing

- Measurements:
- Type = Electronic Sounder Measurement
Interval = Monthly
Date Range = Currently Unavailable
 - Type =
Interval =
Date Range =
 - Type =
Interval =
Date Range =

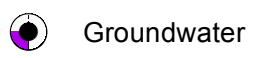
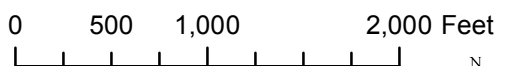
Description:
2 inch PVC casing FM

Root Depth (ft bgs) = 4.0
 GS Buffer (ft) = 0.0*
 Screen Depth (ft bgs) = 18.0 - 28.0
 Capillary Rise (ft) = 1.0*
 Historical GW level (ft bgs) = 50
 Field Threshold (ft bgs) = 5
 Threshold Elevation (ft NAVD88) = 99.5

Influences:
-

Last Updated:
 5/24/2012
 Preliminary Data

* = assumed value
 bgs = below ground surface
 NR = not recorded



Groundwater

Monitoring Location MW-10-116



Reach = 4A
 River Mile = 176.175455
 X = -120.5432 Y = 37.0311
 (Horizontal Datum is NAD83)
 Distance From River (ft)= 264
 Reference Elevation (ft NAVD88) = 116.9
 Site = TBD
 Land Use = Cotton
 Protocol Reference = ATR App F Sec 2
 Agency = USBR
 Measurements:
 1. Type = Electronic Sounder Measurement
 Interval = Monthly
 Date Range = 6/2/2010 - 1/6/2012
 2. Type = Datalogger
 Interval = Hourly
 Date Range = 6/2/2010 - 8/15/2011
 3. Type =
 Interval =
 Date Range =

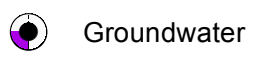
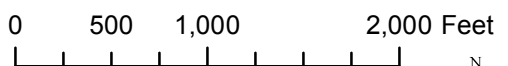
Description:
 2 inch PVC casing AG

 Root Depth (ft bgs) = 4.0
 GS Buffer (ft) = 2.1
 Screen Depth (ft bgs) = 8.6 - 13.6
 Capillary Rise (ft) = 1.0
 Historical GW level (ft bgs) = 50
 Field Threshold (ft bgs) = 5
 Threshold Elevation (ft NAVD88) = 109.8

Influences:
 Canal, SJR

 Last Updated:
 5/23/2012
 Preliminary Data

Monitoring Location MW-10-188





Reach = 4A
 River Mile = 179.9
 X = -120.5081 Y = 37.0018
 (Horizontal Datum is NAD83)
 Distance From River (ft) = 109
 Reference Elevation (ft NAVD88) = 124.9
 Site = TBD
 Land Use = Grain-Fallow
 Protocol Reference = ATR App F Sec 2
 Agency = USBR
 Measurements:
 1. Type = Electronic Sounder Measurement
 Interval = Monthly
 Date Range = 4/14/2010 - 10/19/2011
 2. Type = Datalogger
 Interval = Hourly
 Date Range = 4/27/2010 - 8/15/2011
 3. Type =
 Interval =
 Date Range =

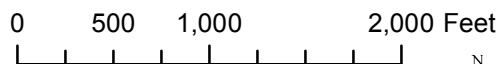
Description:
 2 inch PVC casing AG

Root Depth (ft bgs) = 4.0
 GS Buffer (ft) = 5.1
 Screen Depth (ft bgs) = 10-25
 Capillary Rise (ft) = 1.0
 Historical GW level (ft bgs) = 50
 Field Threshold (ft bgs) = 5
 Threshold Elevation (ft NAVD88) = 114.8

Influences:
 SJR

Last Updated:
 5/23/2012
 Preliminary Data

* = assumed value
 bgs = below ground surface
 NR = not recorded



 Groundwater

Monitoring Location MW-10-80



Reach = 4A
 River Mile = 176.4
 X = -120.5444 Y = 37.0280
 (Horizontal Datum is NAD83)
 Distance From River (ft)= 236
 Reference Elevation (ft NAVD88) = 118.8
 Site = TBD
 Land Use = Almond
 Protocol Reference = ATR App F Sec 2
 Agency = USBR
 Measurements:
 1. Type = Electronic Sounder Measurement
 Interval = Weekly - Priority
 Date Range = 4/14/2010 - 11/4/2011
 2. Type = Realtime - W89
 Interval = Hourly
 Date Range = 5/10/2010 - 8/15/2011
 3. Type =
 Interval =
 Date Range =

Description:
 2 inch PVC casing AG

 Root Depth (ft bgs) = 9.0
 GS Buffer (ft) = 3.4
 Screen Depth (ft bgs) = 10-25
 Capillary Rise (ft) = 0.5
 Historical GW level (ft bgs) = 50
 Field Threshold (ft bgs) = 7.6
 Threshold Elevation (ft NAVD88) = 107.8

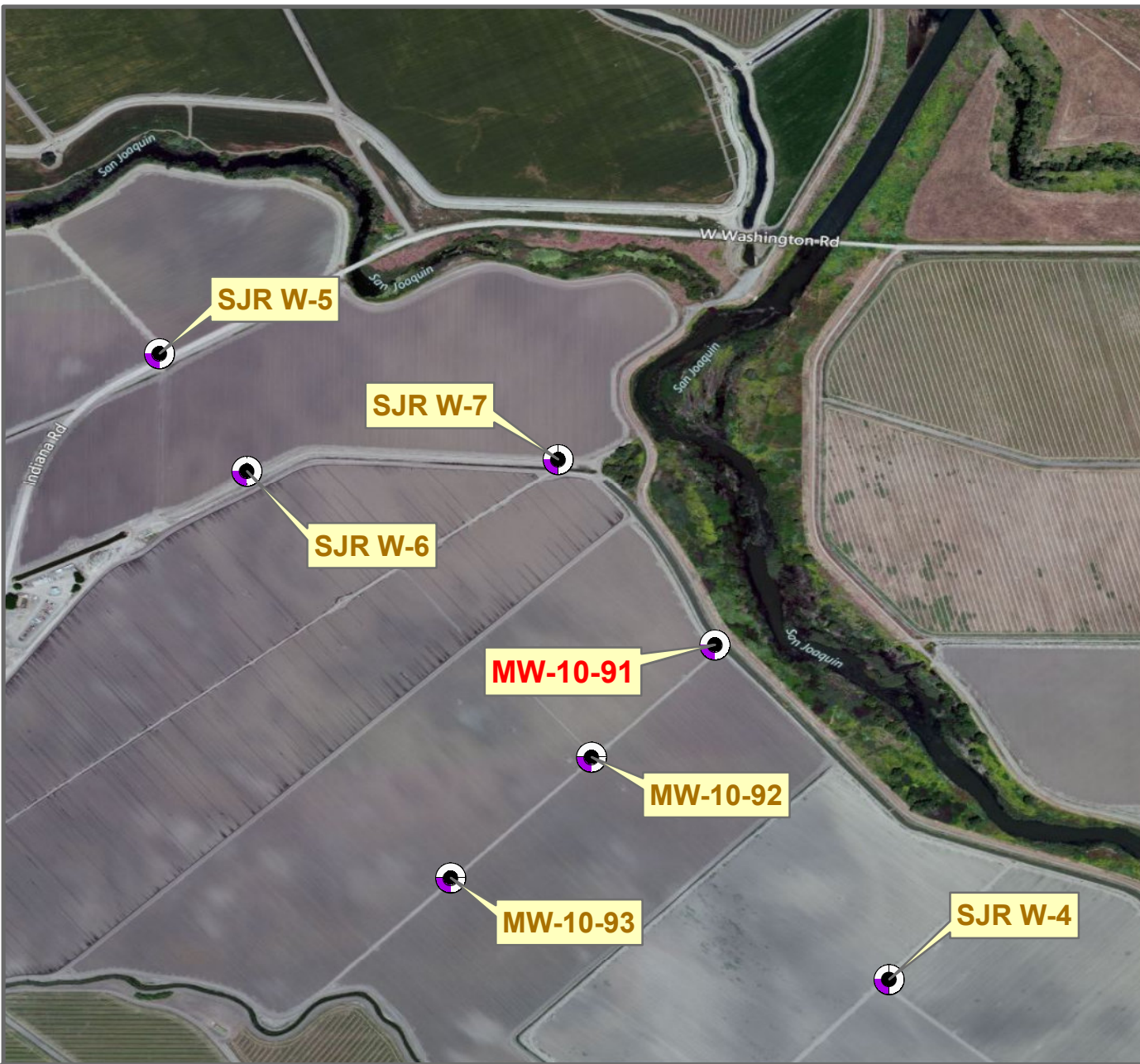
Influences:
 SJR

 Last Updated:
 5/23/2012
 Preliminary Data

Monitoring Location MW-10-89

0 500 1,000 2,000 Feet

Groundwater



Reach = 4A
 River Mile = 168.9
 X = -120.5895 Y = 37.1064
 (Horizontal Datum is NAD83)
 Distance From River (ft) = 338
 Reference Elevation (ft NAVD88) = 107.2
 Site = San Juan Ranch
 Land Use = Cotton
 Protocol Reference = ATR App F Sec 2
 Agency = USBR

Measurements:
 1. Type = Electronic Sounder Measurement
 Interval = Monthly
 Date Range = 4/13/2010 - 12/6/2011
 2. Type = Datalogger
 Interval = Hourly
 Date Range = 4/27/2010 - 1/20/2012
 3. Type =
 Interval =
 Date Range =

Description:
 2 inch PVC casing AG

Root Depth (ft bgs) = 4.0
 GS Buffer (ft) = 3.7
 Screen Depth (ft bgs) = 12.8 - 27.8
 Capillary Rise (ft) = 1.0
 Historical GW level (ft bgs) = 50
 Field Threshold (ft bgs) = 5
 Threshold Elevation (ft NAVD88) = 98.5

Influences:
 Riverside Canal, SJR

* = assumed value
 bgs = below ground surface
 NR = not recorded

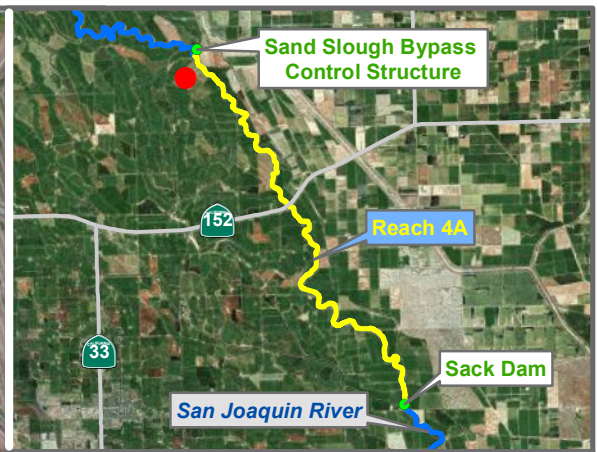
Last Updated:
 5/23/2012
 Preliminary Data

0 500 1,000 2,000 Feet



Groundwater

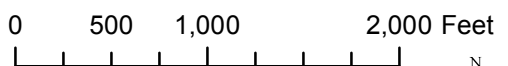
Monitoring Location MW-10-91



Reach = 4A
 River Mile = 168.9
 X = -120.5940 Y = 37.1024
 (Horizontal Datum is NAD83)
 Distance From River (ft) = 2254
 Reference Elevation (ft NAVD88) = 105.4
 Site = San Juan Ranch
 Land Use = Cotton
 Protocol Reference = ATR App F Sec 2
 Agency = USBR
 Measurements:
 1. Type = Electronic Sounder Measurement
 Interval = Monthly
 Date Range = 4/13/2010 - 12/6/2011
 2. Type = Datalogger
 Interval = Hourly
 Date Range = 4/27/2010 - 1/20/2012
 3. Type =
 Interval =
 Date Range =

Merced County
 Left Bank
 Status = Existing
 Description:
 2 inch PVC casing AG
 Root Depth (ft bgs) = 4.0
 GS Buffer (ft) = 2.2
 Screen Depth (ft bgs) = 8.5 - 23.5
 Capillary Rise (ft) = 1.0
 Historical GW level (ft bgs) = 50
 Field Threshold (ft bgs) = 5
 Threshold Elevation (ft NAVD88) = 98.2

Influences:
 Slough
 Last Updated:
 5/23/2012
 Preliminary Data
 * = assumed value
 bgs = below ground surface
 NR = not recorded



Monitoring Location MW-10-93



Reach = 4A
 River Mile = 180
 X = -120.5149 Y = 36.9982
 (Horizontal Datum is NAD83)
 Distance From River (ft)= 1958
 Reference Elevation (ft NAVD88) = 122.022
 Site = Home Ranch
 Land Use = Cotton
 Protocol Reference = ATR App F Sec 2
 Agency = USBR

Measurements:
 1. Type = Electronic Sounder Measurement
 Interval = Weekly
 Date Range = 6/2/2011 - 11/16/2011
 2. Type = Realtime - 130
 Interval = Hourly
 Date Range = 6/16/2011 - 11/16/2011
 3. Type =
 Interval =
 Date Range =

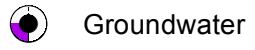
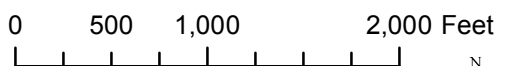
Description:
 2 inch PVC casing, above ground

Root Depth (ft bgs) = 4.0
 GS Buffer (ft) = 0.0
 Screen Depth (ft bgs) = 5.0-15.0
 Capillary Rise (ft) = 1.0
 Historical GW level (ft bgs) = 50
 Field Threshold (ft bgs) = 5
 Threshold Elevation (ft NAVD88) = 117.0

Influences:
 Unlined Head Ditch

* = assumed value
 bgs = below ground surface
 NR = not recorded

Last Updated:
 5/23/2012
 Preliminary Data



Monitoring Location

MW-11-130



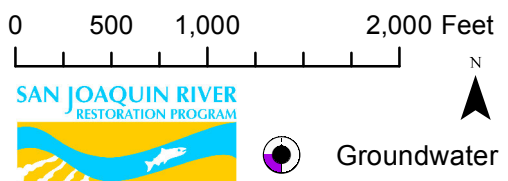
Reach = 4A
 River Mile = 180
 X = -120.5117 Y = 36.9987
 (Horizontal Datum is NAD83)
 Distance From River (ft)= 1107
 Reference Elevation (ft NAVD88) = 121.961
 Site = Home Ranch
 Land Use = Tomato
 Protocol Reference = ATR App F Sec 2
 Agency = USBR
 Measurements:
 1. Type = Electronic Sounder Measurement
 Interval = Weekly
 Date Range = 6/2/2011 - 11/16/2011
 2. Type = Datalogger
 Interval = Hourly
 Date Range = 6/10/2011 - 11/16/2011
 3. Type =
 Interval =
 Date Range =

Description:
 2 inch PVC casing, above ground

 Root Depth (ft bgs) = 3.0
 GS Buffer (ft) = 0.0
 Screen Depth (ft bgs) = 12.5-27.5
 Capillary Rise (ft) = 1.0
 Historical GW level (ft bgs) = 50
 Field Threshold (ft bgs) = 4
 Threshold Elevation (ft NAVD88) = 118.0

Influences:
 Unlined Open Drain, Poso Canal

 Last Updated:
 5/23/2012
 Preliminary Data



Monitoring Location MW-11-131



Reach = 4A
 River Mile = 180
 X = -120.5104 Y = 37.0001
 (Horizontal Datum is NAD83)
 Distance From River (ft)= 564
 Reference Elevation (ft NAVD88) = 123.781
 Site = Home Ranch
 Land Use = Cotton
 Protocol Reference = ATR App F Sec 2
 Agency = USBR
 Measurements:
 1. Type = Electronic Sounder Measurement
 Interval = Weekly
 Date Range = 6/2/2011 - 11/16/2011
 2. Type = Datalogger
 Interval = Hourly
 Date Range = 6/10/2011 - 11/16/2011
 3. Type =
 Interval =
 Date Range =

Description:
 2 inch PVC casing, above ground

Root Depth (ft bgs) = 4.0
 GS Buffer (ft) = 0.0
 Screen Depth (ft bgs) = 10-25
 Capillary Rise (ft) = 1.0
 Historical GW level (ft bgs) = 50
 Field Threshold (ft bgs) = 5
 Threshold Elevation (ft NAVD88) = 118.8

Influences:
 Unlined Head ditch, Poso Canal, SJR

Last Updated:
 5/23/2012
 Preliminary Data

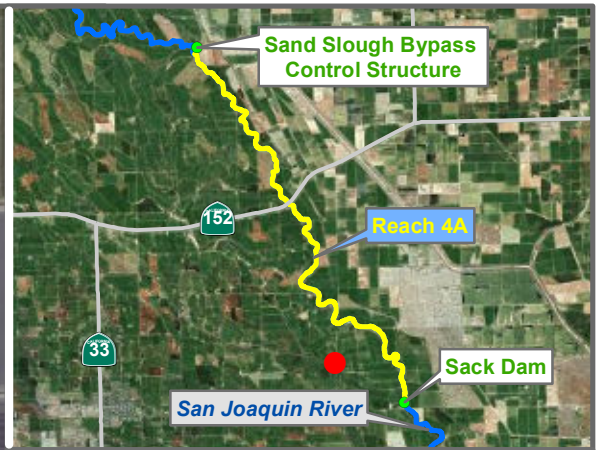
* = assumed value
 bgs = below ground surface
 NR = not recorded

0 500 1,000 2,000 Feet



Groundwater

Monitoring Location MW-11-132



Reach = 4A
 River Mile = 180
 X = -120.5310 Y = 36.9983
 (Horizontal Datum is NAD83)
 Distance From River (ft) = 5193
 Reference Elevation (ft NAVD88) = 119.101
 Site = Home Ranch
 Land Use = Cotton
 Protocol Reference = ATR App F Sec 2
 Agency = USBR

Measurements:
 1. Type = Electronic Sounder Measurement
 Interval = Weekly
 Date Range = 6/2/2011 - 11/16/2011
 2. Type = Datalogger
 Interval = Hourly
 Date Range = 6/10/2011 - 11/16/2011
 3. Type =
 Interval =
 Date Range =

Description:
 2 inch PVC casing, above ground

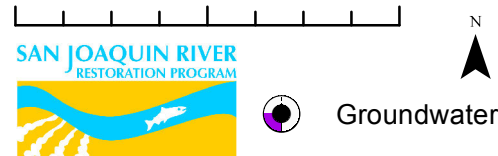
Root Depth (ft bgs) = 4.0
 GS Buffer (ft) = 0.0
 Screen Depth (ft bgs) = 14.4-29.4
 Capillary Rise (ft) = 1.0
 Historical GW level (ft bgs) = 50
 Field Threshold (ft bgs) = 5
 Threshold Elevation (ft NAVD88) = 114.1

Influences:
 Open Drain, Unlined Tailwater ditch, Arroyo canal

Last Updated:
 5/23/2012
 Preliminary Data

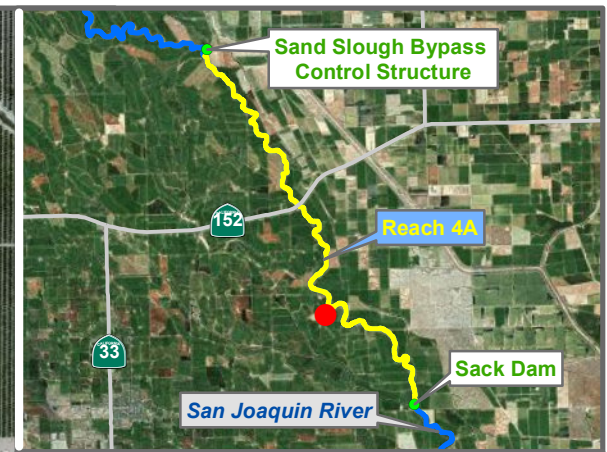
* = assumed value
 bgs = below ground surface
 NR = not recorded

0 500 1,000 2,000 Feet



Monitoring Location

MW-11-133



Reach = 4A
 River Mile = 177.4
 X = -120.5388 Y = 37.0162
 (Horizontal Datum is NAD83)
 Distance From River (ft) = 1338
 Reference Elevation (ft NAVD88) =
 Site = Home Ranch
 Land Use = Grain-Fallow
 Protocol Reference = ATR App F Sec 2
 Agency = USBR
 Measurements:
 1. Type = Electronic Sounder Measurement
 Interval = Weekly
 Date Range = 6/2/2011 - 11/16/2011
 2. Type = Datalogger
 Interval = Hourly
 Date Range = 6/10/2011 - 11/16/2011
 3. Type =
 Interval =
 Date Range =

Description:
 2 inch PVC casing, flush mounted (9/16" hex)

Root Depth (ft bgs) = 4.0
 GS Buffer (ft) = 0.0
 Screen Depth (ft bgs) = 9.0-24.0
 Capillary Rise (ft) = 1.0
 Historical GW level (ft bgs) = 50
 Field Threshold (ft bgs) = 5
 Threshold Elevation (ft NAVD88) = 112.2

Influences:
 San Juan Drain no. 4

Last Updated:
 5/23/2012
 Preliminary Data

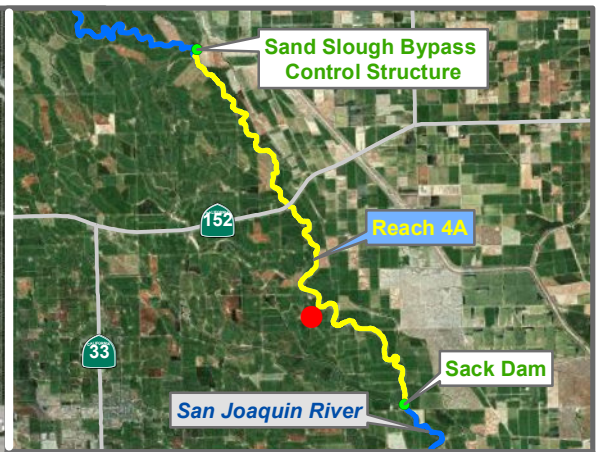
Monitoring Location MW-11-134

0 500 1,000 2,000 Feet

SAN JOAQUIN RIVER RESTORATION PROGRAM

Groundwater

V:\SJRRP\Monitoring Well Data\Atlas_GWR4A_Well_MW1134.mxd



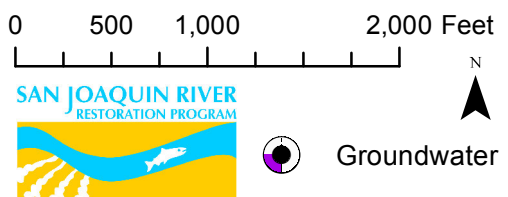
Reach = 4A
 River Mile = 177.4
 X = -120.5407 Y = 37.0155
 (Horizontal Datum is NAD83)
 Distance From River (ft) = 1711
 Reference Elevation (ft NAVD88) = 119.118
 Site = Home Ranch
 Land Use = Grain-Fallow
 Protocol Reference = ATR App F Sec 2
 Agency = USBR
 Measurements:
 1. Type = Electronic Sounder Measurement
 Interval = Weekly
 Date Range = 6/2/2011 - 11/16/2011
 2. Type = Datalogger
 Interval = Hourly
 Date Range = 6/10/2011 - 11/16/2011
 3. Type =
 Interval =
 Date Range =

Description:
 2 inch PVC casing, above ground

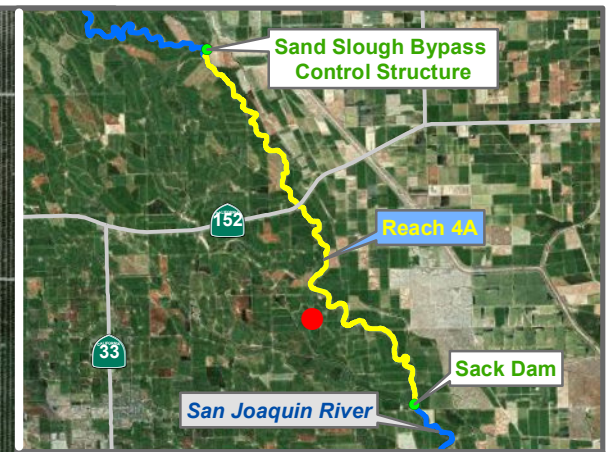
 Root Depth (ft bgs) = 4.0
 GS Buffer (ft) = 0.0
 Screen Depth (ft bgs) = 14.2-29.2
 Capillary Rise (ft) = 1.0
 Historical GW level (ft bgs) = 50
 Field Threshold (ft bgs) = 5
 Threshold Elevation (ft NAVD88) = 114.1

Influences:
 San Juan Drain no. 5

 Last Updated:
 5/23/2012
 Preliminary Data



Monitoring Location MW-11-135



Reach = 4A
 River Mile = 177.4
 X = -120.5450 Y = 37.0150
 (Horizontal Datum is NAD83)
 Distance From River (ft) = 2695
 Reference Elevation (ft NAVD88) =
 Site = Home Ranch
 Land Use = Grain-Fallow
 Protocol Reference = ATR App F Sec 2
 Agency = USBR

Measurements:
 1. Type = Electronic Sounder Measurement
 Interval = Weekly
 Date Range = 6/2/2011 - 11/16/2011
 2. Type = Datalogger
 Interval = Hourly
 Date Range = 6/10/2011 - 11/16/2011
 3. Type =
 Interval =
 Date Range =

Description:
 2 inch PVC casing, flush mounted (5/16" Allen)

Root Depth (ft bgs) = 4.0
 GS Buffer (ft) = 0.0
 Screen Depth (ft bgs) = 10.0-20.0
 Capillary Rise (ft) = 1.0
 Historical GW level (ft bgs) = 50
 Field Threshold (ft bgs) = 5
 Threshold Elevation (ft NAVD88) = 111.7

Influences:
 Drainage ditch (dry), San Juan Drain no. 6

Last Updated:
 5/23/2012
 Preliminary Data

* = assumed value
 bgs = below ground surface
 NR = not recorded

Monitoring Location MW-11-136



Reach = 4A
 River Mile =
 X = -120.5674 Y = 37.0696 Status =
 (Horizontal Datum is NAD83)
 Distance From River Centerline (ft)=
 Reference Elevation (ft NAVD88) = 111.212
 Site =
 Land Use =
 Protocol Reference =
 Agency = USBR
 Measurements:
 1. Type = Electronic Sounder Measurement
 Interval =
 Date Range = Currently Unavailable
 2. Type =
 Interval =
 Date Range =
 3. Type =
 Interval =
 Date Range =

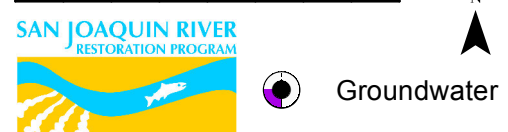
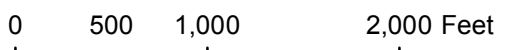
Description:

 Root Depth (ft bgs) =
 GS Buffer (ft) =
 Screen Depth (ft bgs) =
 Capillary Rise (ft) =
 Historical GW level (ft bgs) = 50
 Field Threshold (ft bgs) =
 Threshold Elevation (ft NAVD88) =

Influences:

 * = assumed value
 bgs = below ground surface
 NR = not recorded

 Last Updated:
 5/24/2012
 Preliminary Data



Monitoring Location MW-11-148



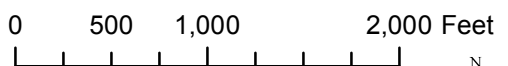
Reach = 4A
 River Mile =
 X = -120.5568 Y = 37.0654 Status =
 (Horizontal Datum is NAD83)
 Distance From River Centerline (ft)=
 Reference Elevation (ft NAVD88) = 113.566
 Site =
 Land Use =
 Protocol Reference =
 Agency = USBR
 Measurements:
 1. Type = Electronic Sounder Measurement
 Interval =
 Date Range = Currently Unavailable
 2. Type =
 Interval =
 Date Range =
 3. Type =
 Interval =
 Date Range =

Description:

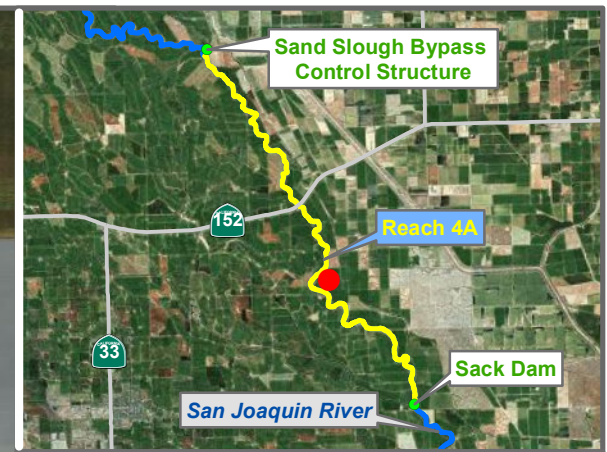
 Root Depth (ft bgs) =
 GS Buffer (ft) =
 Screen Depth (ft bgs) =
 Capillary Rise (ft) =
 Historical GW level (ft bgs) = 50
 Field Threshold (ft bgs) =
 Threshold Elevation (ft NAVD88) =

Influences:

 Last Updated:
 5/24/2012
 Preliminary Data



Monitoring Location MW-11-149



Reach = 4A
 River Mile =
 X = -120.5370 Y = 37.0287 Status =
 (Horizontal Datum is NAD83)
 Distance From River Centerline (ft)=
 Reference Elevation (ft NAVD88) = 115.659
 Site =
 Land Use =
 Protocol Reference =
 Agency = USBR
 Measurements:
 1. Type = Electronic Sounder Measurement
 Interval =
 Date Range = Currently Unavailable
 2. Type =
 Interval =
 Date Range =
 3. Type =
 Interval =
 Date Range =

Description:

Root Depth (ft bgs) =
 GS Buffer (ft) =
 Screen Depth (ft bgs) =
 Capillary Rise (ft) =
 Historical GW level (ft bgs) = 50
 Field Threshold (ft bgs) =
 Threshold Elevation (ft NAVD88) =

Influences:

* = assumed value
 bgs = below ground surface
 NR = not recorded
 Last Updated:
 5/24/2012
 Preliminary Data

Monitoring Location MW-11-162



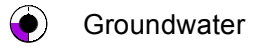
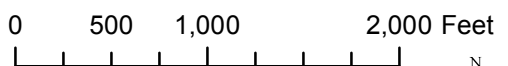
Reach = 4A
 River Mile = 170.4
 X = -120.5791 Y = 37.0924
 (Horizontal Datum is NAD83)
 Distance From River (ft) = 1237
 Reference Elevation (ft NAVD88) = 106.74
 Site = San Juan Ranch - NFF
 Land Use = Tomato
 Protocol Reference = ATR App F Sec 2
 Agency = NFF
 Measurements:
 1. Type = Electronic Sounder Measurement
 Interval = Monthly by USBR
 Date Range = 8/26/2010 - 12/6/2011
 2. Type =
 Interval =
 Date Range =
 3. Type =
 Interval =
 Date Range =

Description:

 Root Depth (ft bgs) = 3.0
 GS Buffer (ft) = 1.8
 Screen Depth (ft bgs) =
 Capillary Rise (ft) = 1.0*
 Historical GW level (ft bgs) = 50
 Field Threshold (ft bgs) = 3.94
 Threshold Elevation (ft NAVD88) = 101.0

Influences:
 Wood Slough

 Last Updated:
 5/23/2012
 Preliminary Data



Monitoring Location SJR W-10



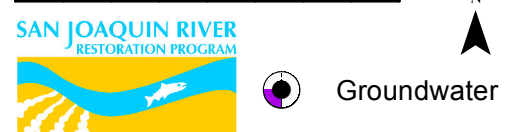
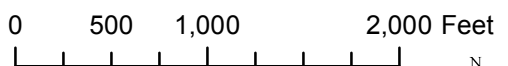
Reach = 4A
 River Mile = 170.4
 X = -120.5740 Y = 37.0922
 (Horizontal Datum is NAD83)
 Distance From River (ft) = 216
 Reference Elevation (ft NAVD88) = 108.23
 Site = San Juan Ranch - NFF
 Land Use = Tomato
 Protocol Reference = ATR App F Sec 2
 Agency = NFF

Measurements:
 1. Type = Electronic Sounder Measurement
 Interval = Monthly by USBR
 Date Range = 8/26/2010 - 12/6/2011
 2. Type =
 Interval =
 Date Range =
 3. Type =
 Interval =
 Date Range =

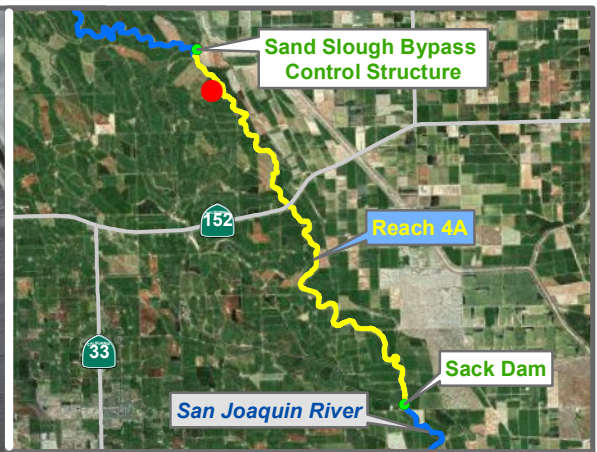
Description:
 Root Depth (ft bgs) = 3.0
 GS Buffer (ft) = 1.8
 Screen Depth (ft bgs) =
 Capillary Rise (ft) = 1.0*
 Historical GW level (ft bgs) = 50
 Field Threshold (ft bgs) = 4
 Threshold Elevation (ft NAVD88) = 102.4

Influences:
 Riverside Canal, SJR

Last Updated:
 5/23/2012
 Preliminary Data



Monitoring Location SJR W-11



Reach = 4A
 River Mile = 169.6
 X = -120.5825 Y = 37.0974
 (Horizontal Datum is NAD83)
 Distance From River (ft)= 1303
 Reference Elevation (ft NAVD88) = 106.19
 Site = San Juan Ranch - NFF
 Land Use = Tomato
 Protocol Reference = ATR App F Sec 2
 Agency = NFF

Merced County
 Left Bank
 Status = Existing

- Measurements:
1. Type = Electronic Sounder Measurement
Interval = Monthly by USBR
Date Range = 8/26/2010 - 12/6/2011
 2. Type =
Interval =
Date Range =
 3. Type =
Interval =
Date Range =

Description:

Root Depth (ft bgs) = 3.0
 GS Buffer (ft) = 2.1
 Screen Depth (ft bgs) =
 Capillary Rise (ft) = 1.0*
 Historical GW level (ft bgs) = 50
 Field Threshold (ft bgs) = 4
 Threshold Elevation (ft NAVD88) = 100.1

Influences:
 Wood Slough

Last Updated:
 5/23/2012
 Preliminary Data

* = assumed value
 bgs = below ground surface
 NR = not recorded

Monitoring Location SJR W-12

0 500 1,000 2,000 Feet



Groundwater



Reach = 4A
 Merced County
 River Mile = 169.3
 Left Bank
 X = -120.5865 Y = 37.1007 Status = Existing
 (Horizontal Datum is NAD83)
 Distance From River (ft)= 1174
 Reference Elevation (ft NAVD88) = 106.35
 Site = San Juan Ranch - NFF
 Land Use = Tomato
 Protocol Reference = ATR App F Sec 2
 Agency = NFF

Measurements:
 1. Type = Electronic Sounder Measurement
 Interval = Monthly by USBR
 Date Range = 8/17/2010 - 12/6/2011
 2. Type =
 Interval =
 Date Range =
 3. Type =
 Interval =
 Date Range =

Description:

Root Depth (ft bgs) = 3.0
 GS Buffer (ft) = 1.1
 Screen Depth (ft bgs) =
 Capillary Rise (ft) = 1.0*
 Historical GW level (ft bgs) = 50
 Field Threshold (ft bgs) = 4
 Threshold Elevation (ft NAVD88) = 101.2

Influences:
 Riverside Canal, SJR

* = assumed value
 bgs = below ground surface
 NR = not recorded

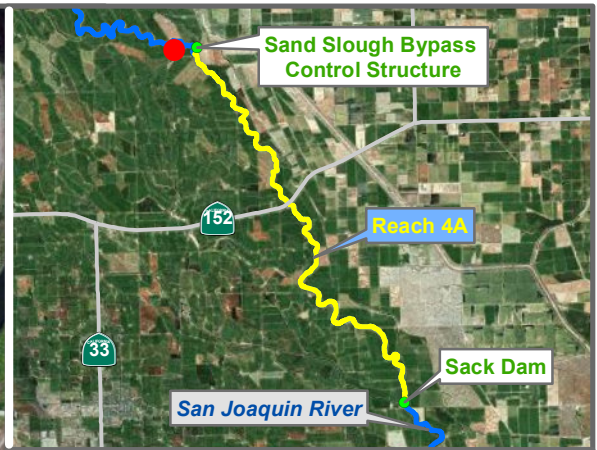
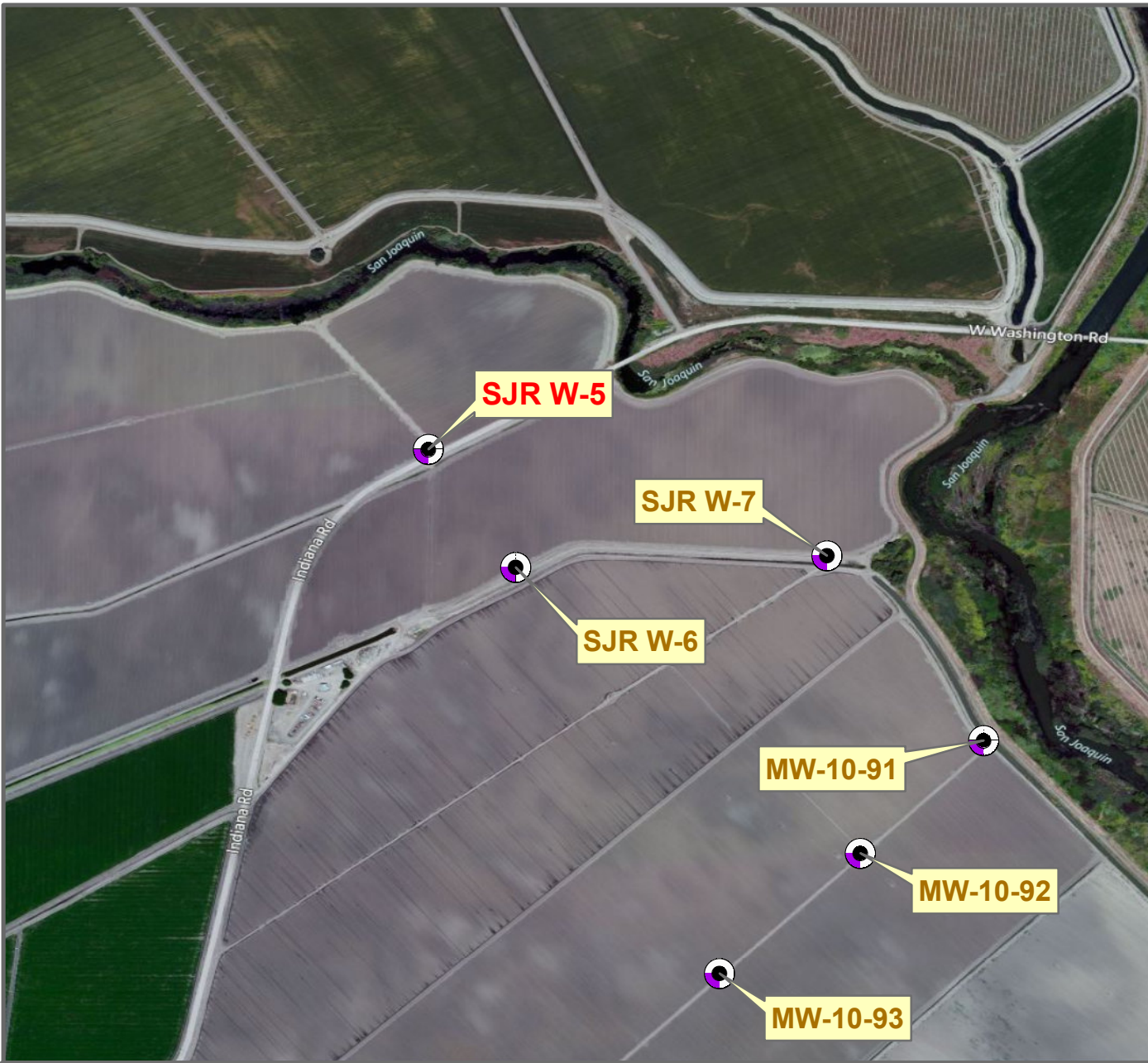
Last Updated:
 5/23/2012
 Preliminary Data

0 500 1,000 2,000 Feet



Groundwater

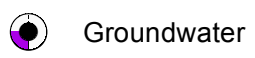
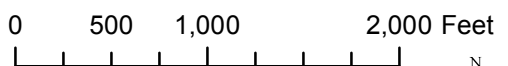
Monitoring Location SJR W-4



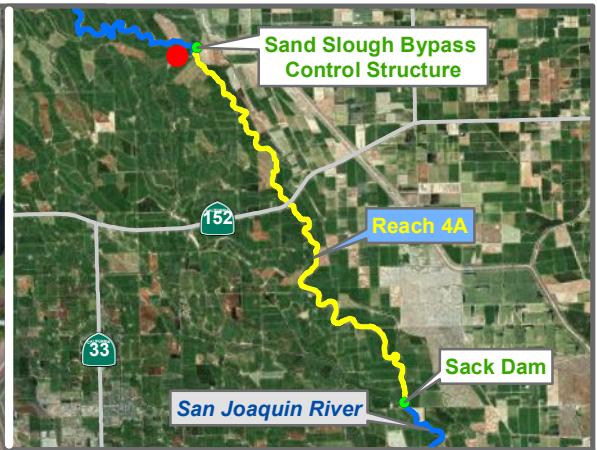
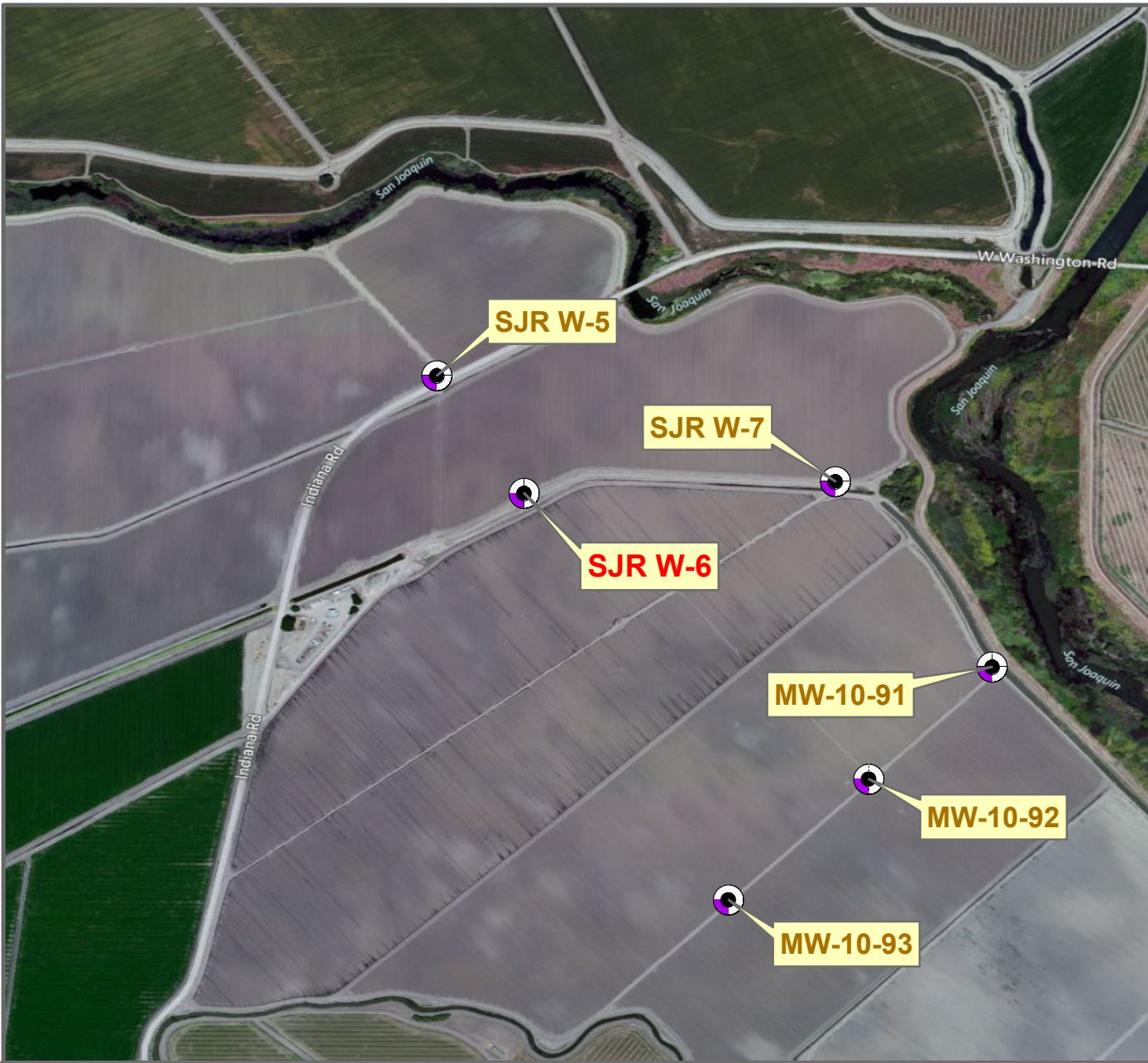
Reach = 4A
 River Mile = 168.1
 X = -120.5991 Y = 37.1115
 (Horizontal Datum is NAD83)
 Distance From River (ft)= 1080
 Reference Elevation (ft NAVD88) = 103.42
 Site = San Juan Ranch - NFF
 Land Use = Tomato
 Protocol Reference = ATR App F Sec 2
 Agency = NFF
 Measurements:
 1. Type = Electronic Sounder Measurement
 Interval = Monthly by USBR
 Date Range = 8/17/2010 - 12/6/2011
 2. Type =
 Interval =
 Date Range =
 3. Type =
 Interval =
 Date Range =

Description:
 Root Depth (ft bgs) = 3.0
 GS Buffer (ft) = 1.9
 Screen Depth (ft bgs) =
 Capillary Rise (ft) = 1.0*
 Historical GW level (ft bgs) = 50
 Field Threshold (ft bgs) = 4
 Threshold Elevation (ft NAVD88) = 97.5

Influences:
 Drain No. Two
 Last Updated:
 5/23/2012
 Preliminary Data



Monitoring Location SJR W-5



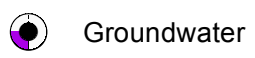
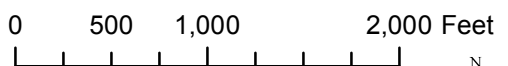
Reach = 4A
 River Mile = 168.6
 X = -120.5976 Y = 37.1094
 (Horizontal Datum is NAD83)
 Distance From River (ft)= 1324
 Reference Elevation (ft NAVD88) = 105.65
 Site = San Juan Ranch - NFF
 Land Use = Tomato
 Protocol Reference = ATR App F Sec 2
 Agency = NFF
 Measurements:
 1. Type = Electronic Sounder Measurement
 Interval = Monthly by USBR
 Date Range = 8/17/2010 - 12/6/2011
 2. Type =
 Interval =
 Date Range =
 3. Type =
 Interval =
 Date Range =

Description:

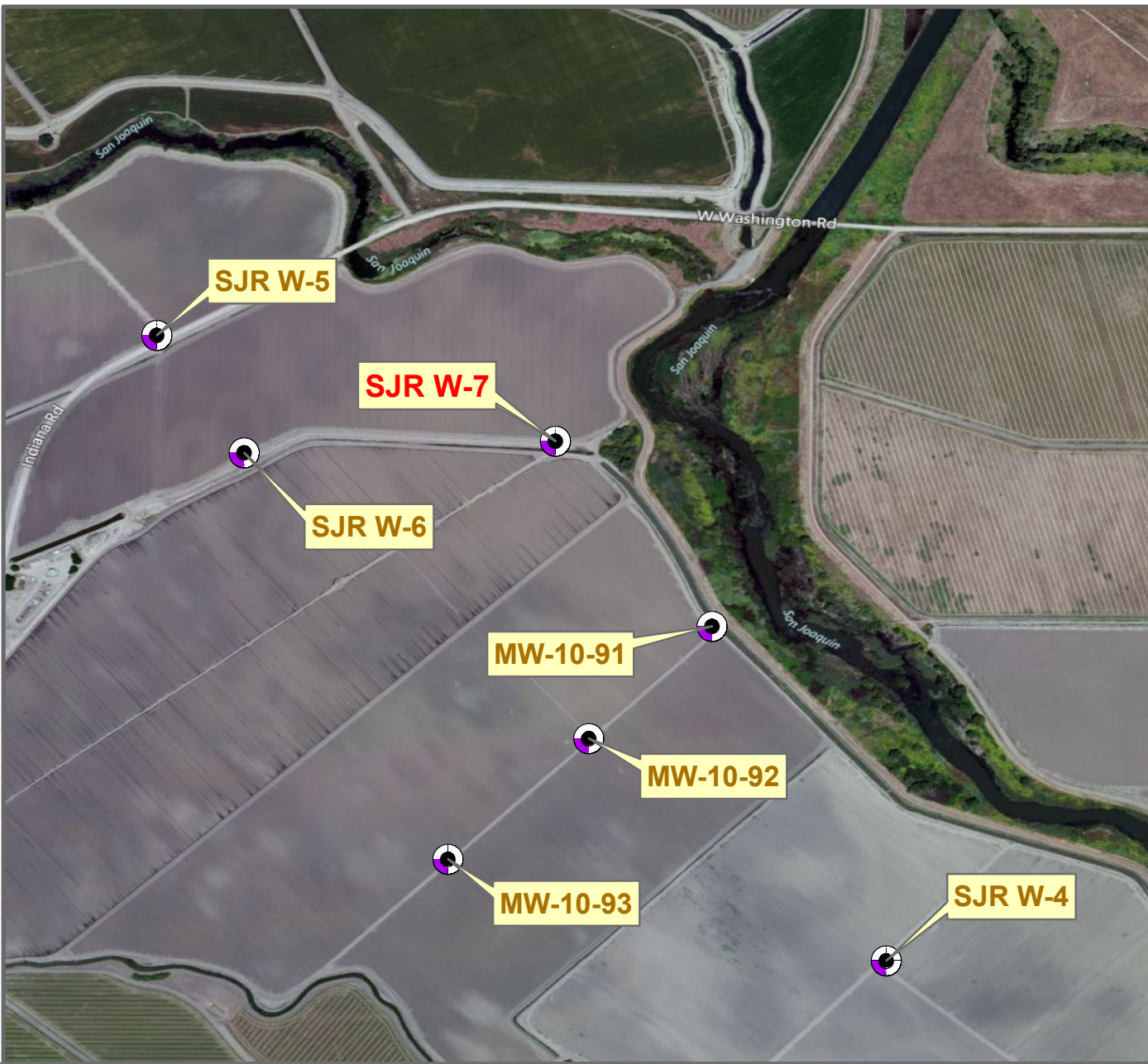
 Root Depth (ft bgs) = 3.0
 GS Buffer (ft) = 4.4
 Screen Depth (ft bgs) =
 Capillary Rise (ft) = 1.0*
 Historical GW level (ft bgs) = 50
 Field Threshold (ft bgs) = 4
 Threshold Elevation (ft NAVD88) = 97.3

Influences:
 Riverside Canal, Drain No. 2

 Last Updated:
 5/23/2012
 Preliminary Data



Monitoring Location SJR W-6



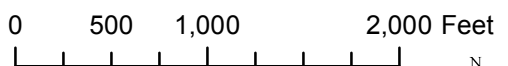
Reach = 4A
 River Mile = 168.6
 X = -120.5922 Y = 37.1096
 (Horizontal Datum is NAD83)
 Distance From River (ft) = 573
 Reference Elevation (ft NAVD88) = 106.99
 Site = San Juan Ranch - NFF
 Land Use = Tomato
 Protocol Reference = ATR App F Sec 2
 Agency = NFF

Measurements:
 1. Type = Electronic Sounder Measurement
 Interval = Monthly by USBR
 Date Range = 8/17/2010 - 12/6/2011
 2. Type =
 Interval =
 Date Range =
 3. Type =
 Interval =
 Date Range =

Description:
 Root Depth (ft bgs) = 3.0
 GS Buffer (ft) = 4.0
 Screen Depth (ft bgs) =
 Capillary Rise (ft) = 1.0*
 Historical GW level (ft bgs) = 50
 Field Threshold (ft bgs) = 4
 Threshold Elevation (ft NAVD88) = 99.0

Influences:
 Riverside Canal, SJR

Last Updated:
 5/23/2012
 Preliminary Data



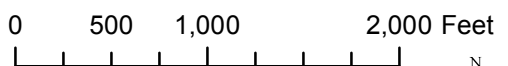
Monitoring Location SJR W-7



Reach = 4A
 River Mile = 170.1
 X = -120.5856 Y = 37.0883
 (Horizontal Datum is NAD83)
 Distance From River (ft) = 3558
 Reference Elevation (ft NAVD88) = 108.88
 Site = San Juan Ranch - NFF
 Land Use = Cotton
 Protocol Reference = ATR App F Sec 2
 Agency = NFF
 Measurements:
 1. Type = Electronic Sounder Measurement
 Interval = Monthly by USBR
 Date Range = 8/17/2010 - 12/6/2011
 2. Type =
 Interval =
 Date Range =
 3. Type =
 Interval =
 Date Range =

Description:
 Root Depth (ft bgs) = 4.0
 GS Buffer (ft) = 3.4
 Screen Depth (ft bgs) =
 Capillary Rise (ft) = 1.0*
 Historical GW level (ft bgs) = 50
 Field Threshold (ft bgs) = 5
 Threshold Elevation (ft NAVD88) = 100.5

Influences:
 Slough, Wood Slough
 Last Updated:
 5/23/2012
 Preliminary Data



Monitoring Location SJR W-8



Reach = 4A
 River Mile = 170
 X = -120.5835 Y = 37.0925
 (Horizontal Datum is NAD83)
 Distance From River (ft) = 2114
 Reference Elevation (ft NAVD88) = 105.07
 Site = San Juan Ranch - NFF
 Land Use = Tomato
 Protocol Reference = ATR App F Sec 2
 Agency = NFF

Merced County
 Left Bank
 Status = Existing

Measurements:

1. Type = Electronic Sounder Measurement
 Interval = Monthly by USBR
 Date Range = 8/26/2010 - 12/6/2011
2. Type =
 Interval =
 Date Range =
3. Type =
 Interval =
 Date Range =

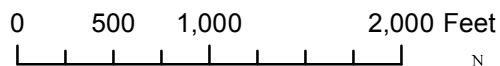
Description:

Root Depth (ft bgs) = 3.0
 GS Buffer (ft) = 1.1
 Screen Depth (ft bgs) =
 Capillary Rise (ft) = 1.0*
 Historical GW level (ft bgs) = 50
 Field Threshold (ft bgs) = 4
 Threshold Elevation (ft NAVD88) = 100.0

Influences:
 Wood Slough

* = assumed value
 bgs = below ground surface
 NR = not recorded

Last Updated:
 5/23/2012
 Preliminary Data



 Groundwater

Monitoring Location SJR W-9



Reach = 4A
 River Mile = 170
 X = -120.5790 Y = 37.0947
 (Horizontal Datum is NAD83)
 Distance From River (ft) = 599
 Reference Elevation (ft NAVD88) = 107.75
 Site = San Juan Ranch
 Land Use = Cotton
 Protocol Reference = ATR App F Sec 2
 Agency = USBR

Merced County
 Left Bank
 Status = Tmp-Decom

Measurements:

1. Type = Electronic Sounder Measurement
Interval = Monthly
Date Range = Currently Unavailable
2. Type =
Interval =
Date Range =
3. Type =
Interval =
Date Range =

Description:

Hand Augered, temporary, no threshold

Root Depth (ft bgs) = 4.0
 GS Buffer (ft) = 3.7
 Screen Depth (ft bgs) =
 Capillary Rise (ft) =
 Historical GW level (ft bgs) = 50
 Field Threshold (ft bgs) = 4
 Threshold Elevation (ft NAVD88) = TBD

Influences:

Riverside Canal, SJR

* = assumed value
 bgs = below ground surface
 NR = not recorded

Last Updated:
 5/24/2012

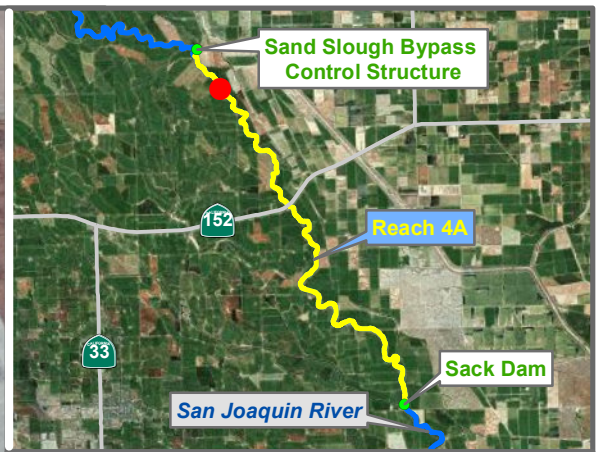
Preliminary Data

0 500 1,000 2,000 Feet



Groundwater

Monitoring Location SJRSB1



Reach = 4A
 River Mile = 170
 X = -120.5789 Y = 37.0980
 (Horizontal Datum is NAD83)
 Distance From River (ft) = 396
 Reference Elevation (ft NAVD88) = 105.38
 Site = San Juan Ranch
 Land Use = Cotton
 Protocol Reference = ATR App F Sec 2
 Agency = USBR

Merced County
 Left Bank
 Status = Tmp-Decom

Measurements:

1. Type = Electronic Sounder Measurement
Interval = Monthly
Date Range = Currently Unavailable
2. Type =
Interval =
Date Range =
3. Type =
Interval =
Date Range =

Description:

Hand Augered, temporary, no threshold

Root Depth (ft bgs) = 4.0
 GS Buffer (ft) = 1.1
 Screen Depth (ft bgs) =
 Capillary Rise (ft) =
 Historical GW level (ft bgs) = 50
 Field Threshold (ft bgs) = 4
 Threshold Elevation (ft NAVD88) = TBD

Influences:

Riverside Canal, SJR

* = assumed value
 bgs = below ground surface
 NR = not recorded

Last Updated:
 5/24/2012

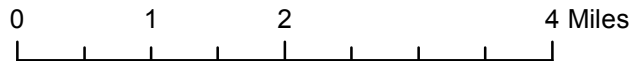
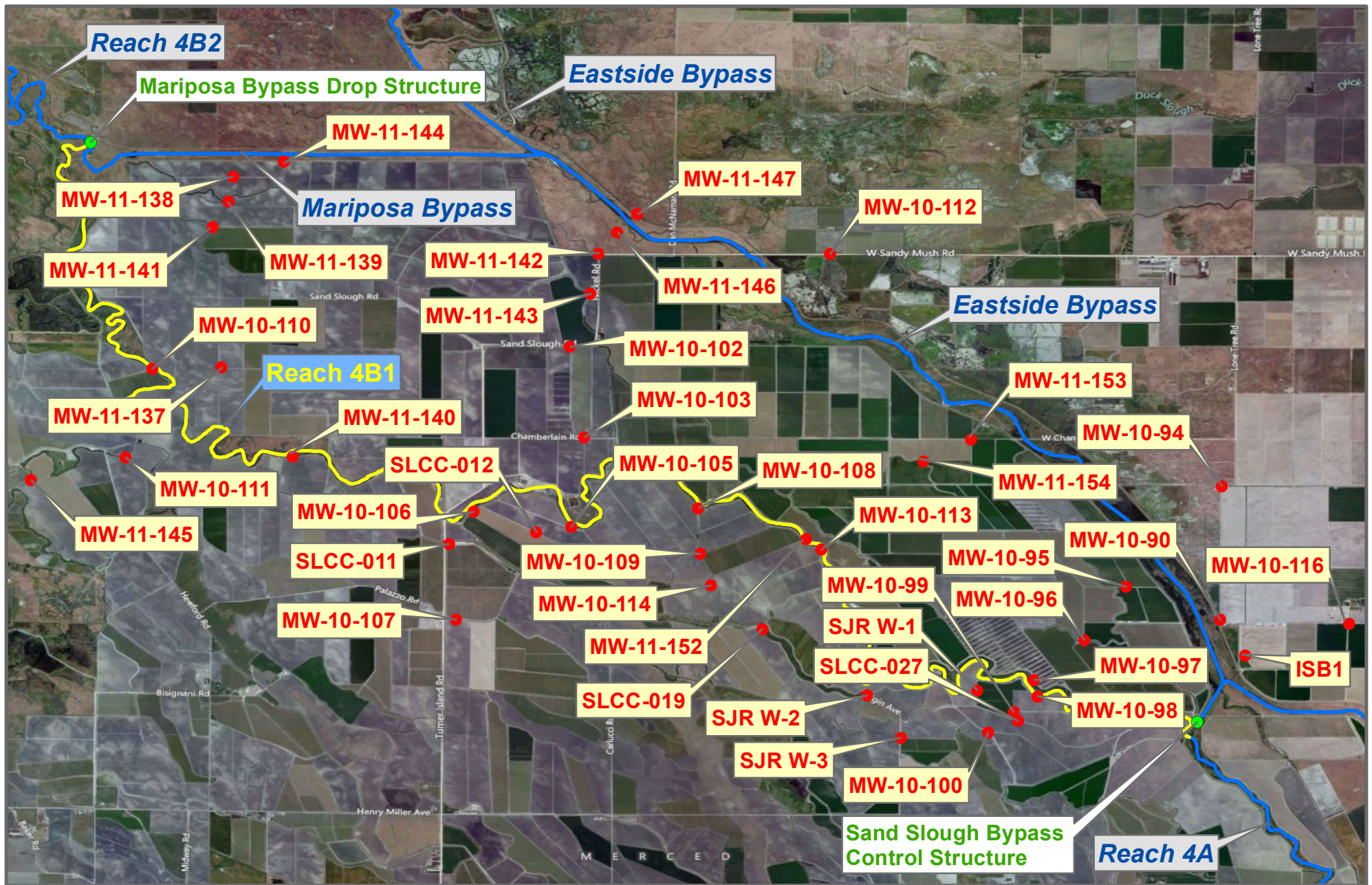
Preliminary Data

0 500 1,000 2,000 Feet



Groundwater

Monitoring Location SJRSB2



Reach 4B1 GW Monitoring Locations

Preliminary Data



RECLAMATION
Managing Water in the West

