

Reach = 2B
 River Mile = 211.8
 X = -120.3102 Y = 36.7865
 (Horizontal Datum is NAD83)
 Distance From River (ft)= 1798
 Reference Elevation (ft NAVD88) = 162.1
 Site = San Mateo Ave.
 Land Use = Almond
 Protocol Reference = ATR App F Sec 2
 Agency = USBR

Measurements:
 1. Type = Electronic Sounder Measurement
 Interval = Monthly
 Date Range = 8/13/2009 - 9/7/2011
 2. Type =
 Interval =
 Date Range =
 3. Type =
 Interval =
 Date Range =

Description:
 2 inch PVC casing FM

Root Depth (ft bgs) = 9.0
 GS Buffer (ft) = 0.9
 Screen Depth (ft bgs) = 22.5 - 42.5
 Capillary Rise (ft) = 1.0
 Historical GW level (ft bgs) = 50
 Field Threshold (ft bgs) = 10
 Threshold Elevation (ft NAVD88) = 151.2

Influences:

* = assumed value
 bgs = below ground surface
 NR = not recorded

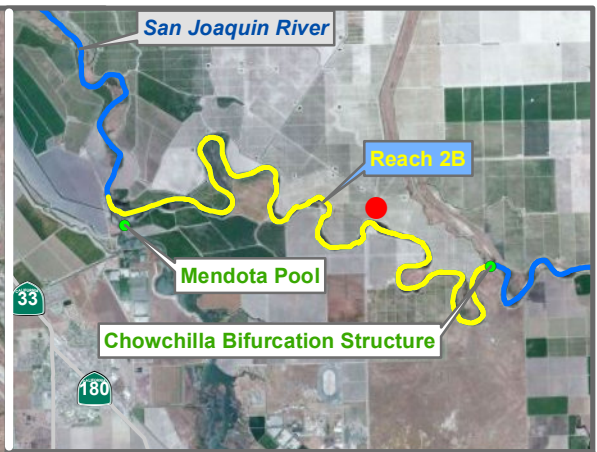
Last Updated:
 5/23/2012
 Preliminary Data

Monitoring Location MW-09-52

0 500 1,000 2,000 Feet



Groundwater



Reach = 2B
 River Mile = 211.8
 X = -120.3112 Y = 36.7847
 (Horizontal Datum is NAD83)
 Distance From River (ft)= 1072
 Reference Elevation (ft NAVD88) = 162.8
 Site = San Mateo Ave.
 Land Use = Almond
 Protocol Reference = ATR App F Sec 2
 Agency = USBR
 Measurements:
 1. Type = Electronic Sounder Measurement
 Interval = Monthly
 Date Range = Currently Unavailable
 2. Type = Datalogger
 Interval = Hourly
 Date Range = Currently Unavailable
 3. Type =
 Interval =
 Date Range =

Description:
 2 inch PVC casing FM

Root Depth (ft bgs) = 9.0
 GS Buffer (ft) = 1.4
 Screen Depth (ft bgs) = 33.0 - 48.0
 Capillary Rise (ft) = 1.0
 Historical GW level (ft bgs) = 50
 Field Threshold (ft bgs) = 10
 Threshold Elevation (ft NAVD88) = 151.4

Influences:

-

* = assumed value
 bgs = below ground surface
 NR = not recorded

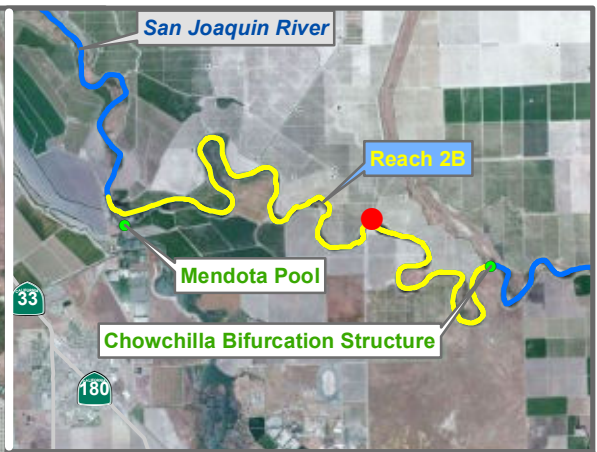
Last Updated:
 5/24/2012
 Preliminary Data

0 500 1,000 2,000 Feet



Groundwater

Monitoring Location MW-09-53



Reach = 2B
 River Mile = 211.8
 X = -120.3123 Y = 36.7826
 (Horizontal Datum is NAD83)
 Distance From River (ft) = 263
 Reference Elevation (ft NAVD88) = 168
 Site = San Mateo Ave.
 Land Use = Almond
 Protocol Reference = ATR App F Sec 2
 Agency = USBR
 Measurements:
 1. Type = Electronic Sounder Measurement
 Interval = Monthly
 Date Range = Currently Unavailable
 2. Type = Datalogger
 Interval = Hourly
 Date Range = Currently Unavailable
 3. Type =
 Interval =
 Date Range =

Description:
 2 inch PVC casing FM, deep well, no threshold

Root Depth (ft bgs) = 9.0
 GS Buffer (ft) = 7.7
 Screen Depth (ft bgs) = 36.2 - 51.2
 Capillary Rise (ft) = 1.0
 Historical GW level (ft bgs) = 50
 Field Threshold (ft bgs) = 10
 Threshold Elevation (ft NAVD88) = 150.3

Influences:
 SJR

* = assumed value
 bgs = below ground surface
 NR = not recorded

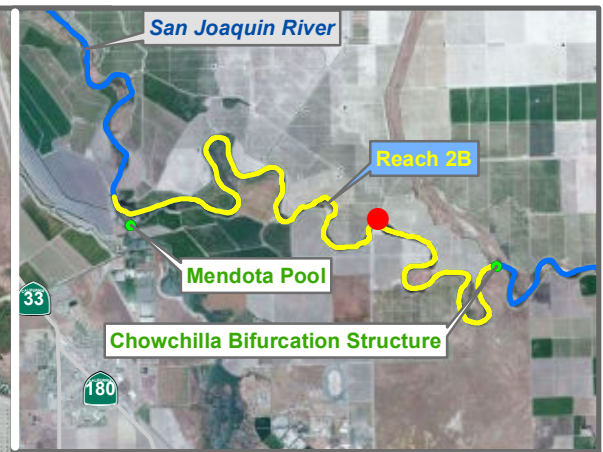
Last Updated:
 5/24/2012
 Preliminary Data

0 500 1,000 2,000 Feet



Groundwater

Monitoring Location MW-09-54



Reach = 2B
 River Mile = 211.8
 X = -120.3123 Y = 36.7826
 (Horizontal Datum is NAD83)
 Distance From River (ft) = 258
 Reference Elevation (ft NAVD88) = 168.2
 Site = San Mateo Ave.
 Land Use = Almond
 Protocol Reference = ATR App F Sec 2
 Agency = USBR

Madera County
 Right Bank
 Status = Existing

- Measurements:
- Type = Electronic Sounder Measurement
Interval = Weekly - Priority
Date Range = Currently Unavailable
 - Type = Realtime - W54
Interval = Hourly
Date Range = Currently Unavailable
 - Type =
Interval =
Date Range =

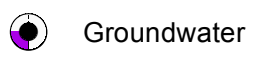
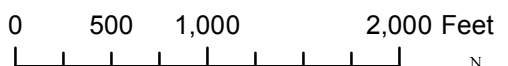
Description:
2 inch PVC casing FM

Root Depth (ft bgs) = 9.0
 GS Buffer (ft) = 7.9
 Screen Depth (ft bgs) = 9.2 - 29.2
 Capillary Rise (ft) = 1.0
 Historical GW level (ft bgs) = 50
 Field Threshold (ft bgs) = 10
 Threshold Elevation (ft NAVD88) = 155.8

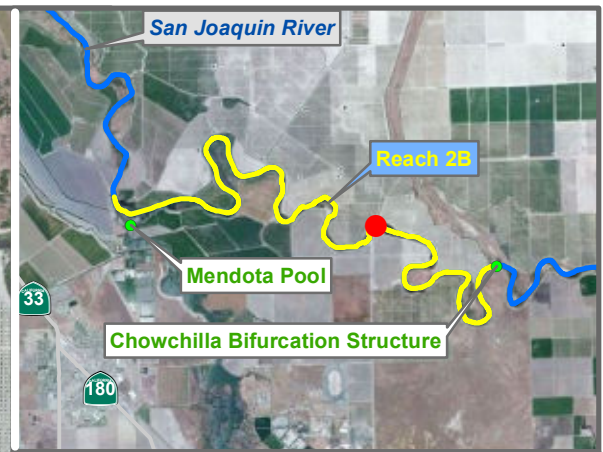
Influences:
SJR

* = assumed value
 bgs = below ground surface
 NR = not recorded

Last Updated:
 5/24/2012
 Preliminary Data



Monitoring Location MW-09-54B



Reach = 2B
 River Mile = 211.8
 X = -120.3128 Y = 36.7815
 (Horizontal Datum is NAD83)
 Distance From River (ft) = 176
 Reference Elevation (ft NAVD88) = 166.1
 Site = San Mateo Ave.
 Land Use = Palms
 Protocol Reference = ATR App F Sec 2
 Agency = USBR

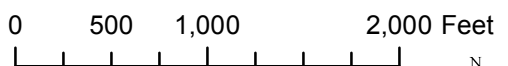
Measurements:
 1. Type = Electronic Sounder Measurement
 Interval = Monthly
 Date Range = Currently Unavailable
 2. Type = Datalogger
 Interval = Hourly
 Date Range = Currently Unavailable
 3. Type =
 Interval =
 Date Range =

Description:
 2 inch PVC casing AG, deep well, no threshold

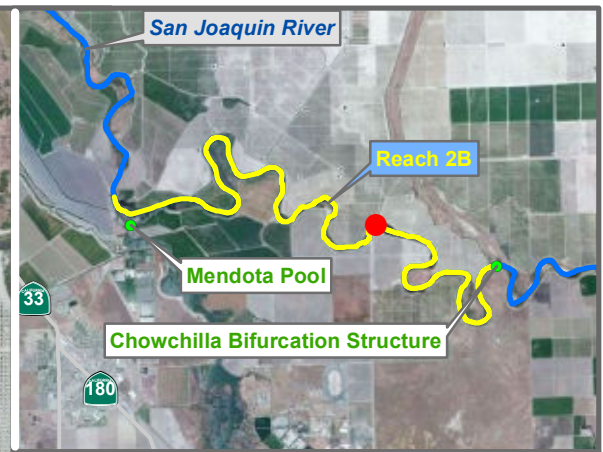
Root Depth (ft bgs) = 6.0
 GS Buffer (ft) = 5.4
 Screen Depth (ft bgs) = 40.0 - 50.0
 Capillary Rise (ft) = 1.0
 Historical GW level (ft bgs) = 50
 Field Threshold (ft bgs) = 7
 Threshold Elevation (ft NAVD88) = 153.7

Influences:
 SJR

Last Updated:
 5/24/2012
 Preliminary Data



Monitoring Location MW-09-55



Reach = 2B
 River Mile = 211.8
 X = -120.3128 Y = 36.7815
 (Horizontal Datum is NAD83)
 Distance From River (ft) = 171
 Reference Elevation (ft NAVD88) = 165.7
 Site = San Mateo Ave.
 Land Use = Palms
 Protocol Reference = ATR App F Sec 2
 Agency = USBR

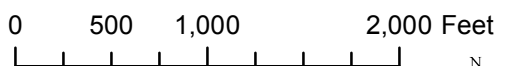
Measurements:
 1. Type = Electronic Sounder Measurement
 Interval = Weekly - Priority
 Date Range = Currently Unavailable
 2. Type = Datalogger
 Interval = Hourly
 Date Range = Currently Unavailable
 3. Type =
 Interval =
 Date Range =

Description:
 2 inch PVC casing FM

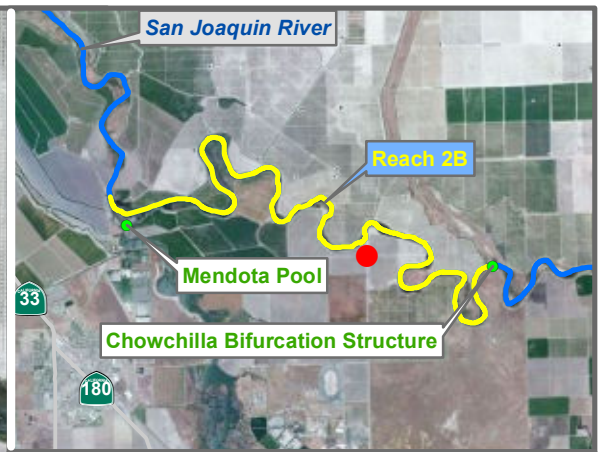
 Root Depth (ft bgs) = 6.0
 GS Buffer (ft) = 3.7
 Screen Depth (ft bgs) = 10.0 - 15.0
 Capillary Rise (ft) = 1.0
 Historical GW level (ft bgs) = 50
 Field Threshold (ft bgs) = 7
 Threshold Elevation (ft NAVD88) = 158.0

Influences:
 SJR

 Last Updated:
 5/24/2012
 Preliminary Data



Monitoring Location MW-09-55B



Reach = 2B
 River Mile = 211.8
 X = -120.3143 Y = 36.7759
 (Horizontal Datum is NAD83)
 Distance From River (ft) = 967
 Reference Elevation (ft NAVD88) = 161.2
 Site = San Mateo Ave.
 Land Use = Pistachios
 Protocol Reference = ATR App F Sec 2
 Agency = USBR

Measurements:
 1. Type = Electronic Sounder Measurement
 Interval = Monthly
 Date Range = Currently Unavailable
 2. Type = Datalogger
 Interval = Hourly
 Date Range = Currently Unavailable
 3. Type =
 Interval =
 Date Range =

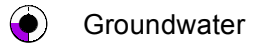
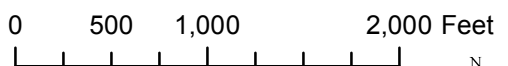
Description:
 2 inch PVC casing FM

Root Depth (ft bgs) = 6.0
 GS Buffer (ft) = 1.7
 Screen Depth (ft bgs) = 22.0 - 42.0
 Capillary Rise (ft) = 1.0
 Historical GW level (ft bgs) = 50
 Field Threshold (ft bgs) = 7
 Threshold Elevation (ft NAVD88) = 152.5

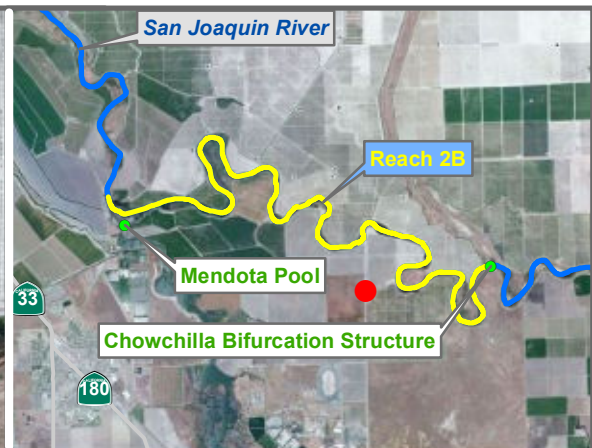
Influences:
 -

* = assumed value
 bgs = below ground surface
 NR = not recorded

Last Updated:
 5/24/2012
 Preliminary Data



Monitoring Location MW-09-56



Reach = 2B
 River Mile = 211.8
 X = -120.3143 Y = 36.7692
 Distance From River (ft) = 2320
 Reference Elevation (ft NAVD88) = 163.1
 Site = San Mateo Ave.

Fresno County
 Left Bank
 Status = Existing
 Land Use =
 Protocol Reference = ATR App F Sec 2
 Agency = USBR

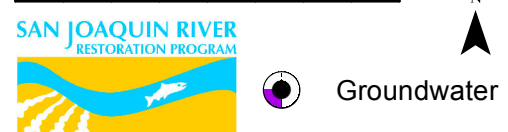
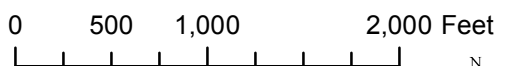
Measurements:
 1. Type = Electronic Sounder Measurement
 Interval = Monthly
 Date Range = 8/4/2009 - 9/7/2011
 2. Type =
 Interval =
 Date Range =
 3. Type =
 Interval =
 Date Range =

Description:
 2 inch PVC casing FM, deep well, no threshold

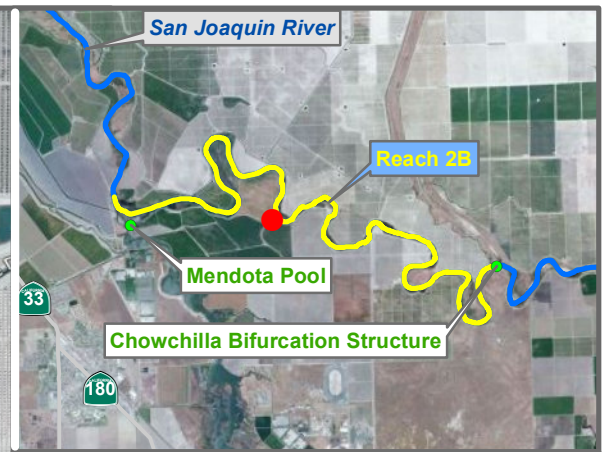
Root Depth (ft bgs) =
 GS Buffer (ft) = 1.6
 Screen Depth (ft bgs) = 31.5 - 51.5
 Capillary Rise (ft) = 0.5
 Historical GW level (ft bgs) = 50
 Field Threshold (ft bgs) =
 Threshold Elevation (ft NAVD88) =

Influences:
 -

* = assumed value
 bgs = below ground surface
 NR = not recorded
 Last Updated:
 5/23/2012
 Preliminary Data



Monitoring Location MW-09-57



Reach = 2B
 River Mile =
 X = -120.3367 Y = 36.7830 Status =
 (Horizontal Datum is NAD83)
 Distance From River Centerline (ft)=
 Reference Elevation (ft NAVD88) = 158.982
 Site =
 Land Use =
 Protocol Reference =
 Agency = USBR
 Measurements:
 1. Type = Electronic Sounder Measurement
 Interval =
 Date Range = Currently Unavailable
 2. Type =
 Interval =
 Date Range =
 3. Type =
 Interval =
 Date Range =

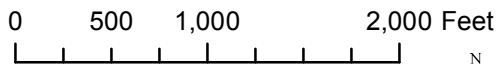
Description:

Root Depth (ft bgs) =
 GS Buffer (ft) =
 Screen Depth (ft bgs) =
 Capillary Rise (ft) =
 Historical GW level (ft bgs) = 50
 Field Threshold (ft bgs) =
 Threshold Elevation (ft NAVD88) =

Influences:

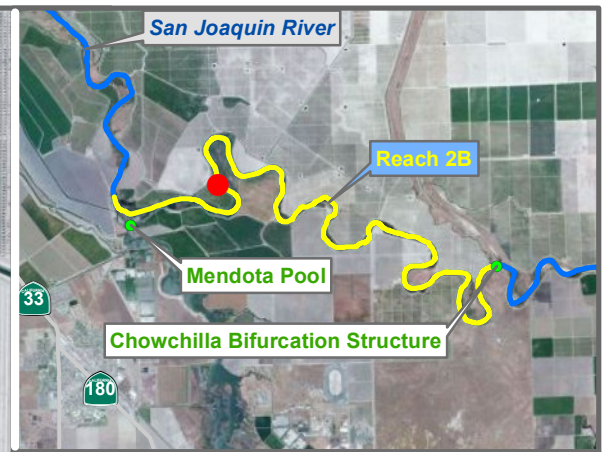
* = assumed value
 bgs = below ground surface
 NR = not recorded

Last Updated:
 5/24/2012
 Preliminary Data



Groundwater

Monitoring Location MW-11-164



PZ-09-R2B-1

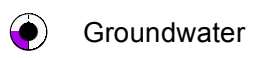
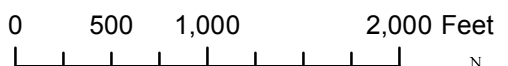
Reach = 2B
 River Mile = 207.081531515
 X = -120.3488 Y = 36.7897
 (Horizontal Datum is NAD83)
 Distance From River (ft) = 166
 Reference Elevation (ft NAVD88) = 156.1
 Site = NA
 Land Use = Annual Crops
 Protocol Reference = ATR App F Sec 2
 Agency = USBR
 Measurements:
 1. Type = Electronic Sounder Measurement
 Interval = Weekly - Priority
 Date Range = 10/21/2009 - 8/2/2011
 2. Type =
 Interval =
 Date Range =
 3. Type =
 Interval =
 Date Range =

Description:
 1.25 inch galv pipe

 Root Depth (ft bgs) = 4.0
 GS Buffer (ft) = 1.3
 Screen Depth (ft bgs) = 8-11
 Capillary Rise (ft) = 1.0
 Historical GW level (ft bgs) = 50
 Field Threshold (ft bgs) = 5
 Threshold Elevation (ft NAVD88) = 149.9

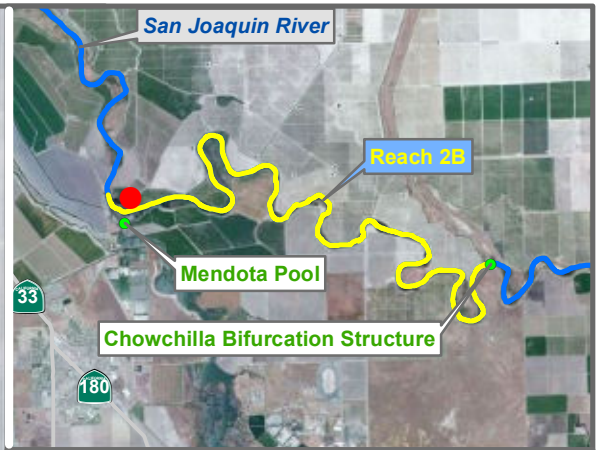
Influences:
 SJR, Flume Pump

 Last Updated:
 5/23/2012
 Preliminary Data



Monitoring Location

PZ-09-R2B-1



Reach = 2B
 River Mile = 205.118119395
 X = -120.3676 Y = 36.7874
 (Horizontal Datum is NAD83)
 Distance From River (ft) = 813
 Reference Elevation (ft NAVD88) = 152.4
 Site = NA
 Land Use = Alfalfa
 Protocol Reference = ATR App F Sec 2
 Agency = USBR
 Measurements:
 1. Type = Electronic Sounder Measurement
 Interval = Weekly - Priority
 Date Range = 10/21/2009 - 9/7/2011
 2. Type =
 Interval =
 Date Range =
 3. Type =
 Interval =
 Date Range =

Description:
 1.25 inch galv pipe

Root Depth (ft bgs) = 4.0
 GS Buffer (ft) = 3.9
 Screen Depth (ft bgs) = 17-20
 Capillary Rise (ft) = 0.5
 Historical GW level (ft bgs) = 50
 Field Threshold (ft bgs) = 4.5
 Threshold Elevation (ft NAVD88) = 144.1

Influences:
 Mendota Pool

* = assumed value
 bgs = below ground surface
 NR = not recorded

Last Updated:
 5/23/2012
 Preliminary Data

0 500 1,000 2,000 Feet



Groundwater

Monitoring Location PZ-09-R2B-2