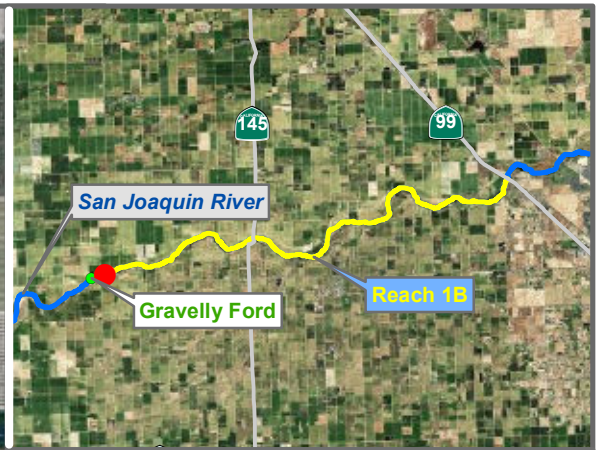


# Reach 1B GW Monitoring Locations





Reach = 1B  
 River Mile = 229.2  
 X = -120.1308 Y = 36.8099  
 (Horizontal Datum is NAD83)  
 Distance From River (ft)= 165  
 Reference Elevation (ft NAVD88) = 202.47  
 Site = Lake Ave.  
 Land Use = Vineyard  
 Protocol Reference = ATR App F Sec 2  
 Agency = USBR

**Measurements:**  
 1. Type = Electronic Sounder Measurement  
 Interval = Monthly  
 Date Range = 10/23/2009 - 8/19/2011  
 2. Type =  
 Interval =  
 Date Range =  
 3. Type =  
 Interval =  
 Date Range =

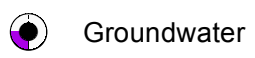
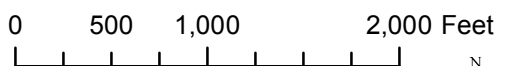
**Description:**  
 2 inch PVC well

Root Depth (ft bgs) = 6.0  
 GS Buffer (ft) = 1.8  
 Screen Depth (ft bgs) =  
 Capillary Rise (ft) = 1.0\*  
 Historical GW level (ft bgs) = 50  
 Field Threshold (ft bgs) = 7  
 Threshold Elevation (ft NAVD88) =

**Influences:**  
 SJR

Last Updated:  
 5/23/2012  
 Preliminary Data

\* = assumed value  
 bgs = below ground surface  
 NR = not recorded



# Monitoring Location FA-1





Reach = 1B  
 River Mile = 229.2  
 X = -120.1331 Y = 36.8086  
 (Horizontal Datum is NAD83)  
 Distance From River (ft)= 483  
 Reference Elevation (ft NAVD88) = 205.32  
 Site = Lake Ave.  
 Land Use = Vineyard  
 Protocol Reference = ATR App F Sec 2  
 Agency = USBR  
 Measurements:  
 1. Type = Electronic Sounder Measurement  
    Interval = Monthly  
    Date Range = Currently Unavailable  
 2. Type = Datalogger  
    Interval = Hourly  
    Date Range = Currently Unavailable  
 3. Type =  
    Interval =  
    Date Range =

Description:  
 2 inch PVC well

Root Depth (ft bgs) = 6.0  
 GS Buffer (ft) = 2.2  
 Screen Depth (ft bgs) =  
 Capillary Rise (ft) = 1.0\*  
 Historical GW level (ft bgs) = 50  
 Field Threshold (ft bgs) = 7  
 Threshold Elevation (ft NAVD88) =

Influences:  
 SJR

Last Updated:  
 5/24/2012  
 Preliminary Data

0 500 1,000 2,000 Feet



Groundwater

# Monitoring Location FA-2





Reach = 1B  
 River Mile = 229.2  
 X = -120.1331 Y = 36.8084  
 (Horizontal Datum is NAD83)  
 Distance From River (ft) = 561  
 Reference Elevation (ft NAVD88) = 204.53  
 Site = Lake Ave.  
 Land Use = Vineyard  
 Protocol Reference = ATR App F Sec 2  
 Agency = USBR

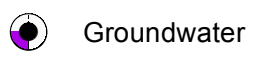
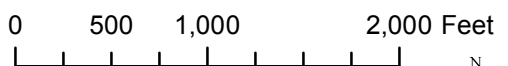
**Measurements:**  
 1. Type = Electronic Sounder Measurement  
 Interval = Monthly  
 Date Range = 10/23/2009 - 8/19/2011  
 2. Type =  
 Interval =  
 Date Range =  
 3. Type =  
 Interval =  
 Date Range =

**Description:**  
 2 inch PVC well

Root Depth (ft bgs) = 6.0  
 GS Buffer (ft) = 1.5  
 Screen Depth (ft bgs) =  
 Capillary Rise (ft) = 1.0\*  
 Historical GW level (ft bgs) = 50  
 Field Threshold (ft bgs) = 7  
 Threshold Elevation (ft NAVD88) =

**Influences:**  
 SJR

Last Updated:  
 5/23/2012  
 Preliminary Data



# Monitoring Location FA-3





Reach = 1B  
 River Mile = 229.2  
 X = -120.1337 Y = 36.8085  
 (Horizontal Datum is NAD83)  
 Distance From River (ft) = 491  
 Reference Elevation (ft NAVD88) = 206.65  
 Site = Lake Ave.  
 Land Use = Fallow  
 Protocol Reference = ATR App F Sec 2  
 Agency = USBR

**Measurements:**  
 1. Type = Electronic Sounder Measurement  
 Interval = Monthly  
 Date Range = 10/23/2009 - 1/22/2010  
 2. Type =  
 Interval =  
 Date Range =  
 3. Type =  
 Interval =  
 Date Range =

**Description:**  
 2 inch PVC well

Root Depth (ft bgs) = 4.0  
 GS Buffer (ft) = 1.7  
 Screen Depth (ft bgs) =  
 Capillary Rise (ft) = 1.0\*  
 Historical GW level (ft bgs) = 50  
 Field Threshold (ft bgs) = 5  
 Threshold Elevation (ft NAVD88) =

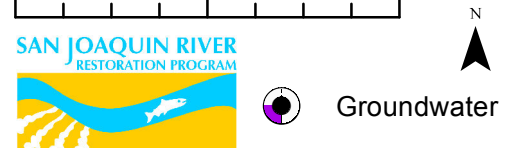
**Influences:**  
 SJR

Last Updated:  
 5/23/2012

\* = assumed value  
 bgs = below ground surface  
 NR = not recorded

Preliminary Data

0 500 1,000 2,000 Feet



# Monitoring Location MA-1





Reach = 1B  
 River Mile = 234.2  
 X = -120.0563 Y = 36.8185  
 (Horizontal Datum is NAD83)  
 Distance From River (ft)= 1520  
 Reference Elevation (ft NAVD88) = 226.6  
 Site = Hwy 145 SkaggsBridge  
 Land Use = Public Land  
 Protocol Reference = ATR App F Sec 2  
 Agency = USBR

Fresno County  
 Left Bank  
 Status = Existing

**Measurements:**

1. Type = Electronic Sounder Measurement  
Interval = Monthly  
Date Range = 10/27/2009 - 8/19/2011
2. Type =  
Interval =  
Date Range =
3. Type =  
Interval =  
Date Range =

**Description:**

2 inch PVC well FM

Root Depth (ft bgs) = 4.0  
 GS Buffer (ft) = 5.8  
 Screen Depth (ft bgs) = 31.5 - 51.5  
 Capillary Rise (ft) = 1.0  
 Historical GW level (ft bgs) = 50  
 Field Threshold (ft bgs) = 5  
 Threshold Elevation (ft NAVD88) = 215.8

**Influences:**

-

Last Updated:  
 5/23/2012

\* = assumed value  
 bgs = below ground surface  
 NR = not recorded

Preliminary Data

0 500 1,000 2,000 Feet



Groundwater

# Monitoring Location MW-09-21





Reach = 1B  
 River Mile = 234.2  
 X = -120.0564 Y = 36.8214  
 (Horizontal Datum is NAD83)  
 Distance From River (ft) = 553  
 Reference Elevation (ft NAVD88) = 222.8  
 Site = Hwy 145 SkaggsBridge  
 Land Use = Public Land  
 Protocol Reference = ATR App F Sec 2  
 Agency = USBR

Fresno County  
 Left Bank  
 Status = Existing

**Measurements:**

1. Type = Electronic Sounder Measurement  
Interval = Monthly  
Date Range = 10/27/2009 - 8/19/2011
2. Type =  
Interval =  
Date Range =
3. Type =  
Interval =  
Date Range =

**Description:**

2 inch PVC well FM

Root Depth (ft bgs) = 4.0  
 GS Buffer (ft) = 3.4  
 Screen Depth (ft bgs) = 33.0 - 53.0  
 Capillary Rise (ft) = 1.0  
 Historical GW level (ft bgs) = 50  
 Field Threshold (ft bgs) = 5  
 Threshold Elevation (ft NAVD88) = 214.4

**Influences:**

-

Last Updated:  
5/23/2012

Preliminary Data

\* = assumed value  
 bgs = below ground surface  
 NR = not recorded

0 500 1,000 2,000 Feet



Groundwater

# Monitoring Location MW-09-22





Reach = 1B  
 River Mile = 234.2  
 X = -120.0565 Y = 36.8222  
 (Horizontal Datum is NAD83)  
 Distance From River (ft)= 262  
 Reference Elevation (ft NAVD88) = 210.6  
 Site = Hwy 145 SkaggsBridge  
 Land Use = Public Land  
 Protocol Reference = ATR App F Sec 2  
 Agency = USBR  
 Measurements:  
 1. Type = Electronic Sounder Measurement  
 Interval = Monthly  
 Date Range = 10/27/2009 - 8/19/2011  
 2. Type =  
 Interval =  
 Date Range =  
 3. Type =  
 Interval =  
 Date Range =

Description:  
 2 inch PVC well FM

Root Depth (ft bgs) = 4.0  
 GS Buffer (ft) = -8.8  
 Screen Depth (ft bgs) = 14.5 - 34.5  
 Capillary Rise (ft) = 0.5  
 Historical GW level (ft bgs) = 50  
 Field Threshold (ft bgs) = 4.5  
 Threshold Elevation (ft NAVD88) = 214.9

Influences:  
 SJR

\* = assumed value  
 bgs = below ground surface  
 NR = not recorded

Last Updated:  
 5/23/2012  
 Preliminary Data

0 500 1,000 2,000 Feet



Groundwater

# Monitoring Location MW-09-23





Reach = 1B  
 River Mile = 234.2  
 X = -120.0565 Y = 36.8222  
 (Horizontal Datum is NAD83)  
 Distance From River (ft)= 261  
 Reference Elevation (ft NAVD88) = 210.6  
 Site = Hwy 145 SkaggsBridge  
 Land Use = Public Land  
 Protocol Reference = ATR App F Sec 2  
 Agency = USBR  
 Measurements:  
 1. Type = Electronic Sounder Measurement  
 Interval = Monthly  
 Date Range = 10/27/2009 - 8/19/2011  
 2. Type =  
 Interval =  
 Date Range =  
 3. Type =  
 Interval =  
 Date Range =

Description:  
 2 inch PVC well FM

Root Depth (ft bgs) = 4.0  
 GS Buffer (ft) = -8.8  
 Screen Depth (ft bgs) = 12.0 - 22.0  
 Capillary Rise (ft) = 0.5  
 Historical GW level (ft bgs) = 50  
 Field Threshold (ft bgs) = 4.5  
 Threshold Elevation (ft NAVD88) = 214.9

Influences:  
 SJR

\* = assumed value  
 bgs = below ground surface  
 NR = not recorded

Last Updated:  
 5/23/2012  
 Preliminary Data

0 500 1,000 2,000 Feet



Groundwater

# Monitoring Location MW-09-23B





Reach = 1B  
 River Mile = 234.2  
 X = -120.0565 Y = 36.8235  
 (Horizontal Datum is NAD83)  
 Distance From River (ft) = 210  
 Reference Elevation (ft NAVD88) = 224.9  
 Site = Hwy 145 Skaggs Bridge  
 Land Use = Public Land  
 Protocol Reference = ATR App F Sec 2  
 Agency = USBR

Madera County  
 Right Bank  
 Status = Existing

**Measurements:**  
 1. Type = Electronic Sounder Measurement  
 Interval = Monthly  
 Date Range = 10/27/2009 - 8/19/2011  
 2. Type =  
 Interval =  
 Date Range =  
 3. Type =  
 Interval =  
 Date Range =

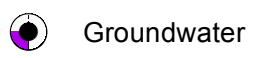
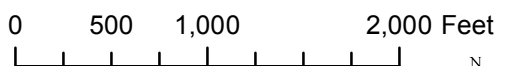
**Description:**  
 2 inch PVC well FM

Root Depth (ft bgs) = 4.0  
 GS Buffer (ft) = -9.6  
 Screen Depth (ft bgs) = 26.5 - 46.5  
 Capillary Rise (ft) = 1.0  
 Historical GW level (ft bgs) = 50  
 Field Threshold (ft bgs) = 5  
 Threshold Elevation (ft NAVD88) = 229.5

**Influences:**  
 SJR

Last Updated:  
 5/23/2012  
 Preliminary Data

\* = assumed value  
 bgs = below ground surface  
 NR = not recorded



# Monitoring Location MW-09-25

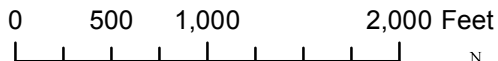




Reach = 1B  
 River Mile = 234.2  
 X = -120.0564 Y = 36.8248  
 (Horizontal Datum is NAD83)  
 Distance From River (ft)= 675  
 Reference Elevation (ft NAVD88) = 228.6  
 Site = Hwy 145 SkaggsBridge  
 Land Use = Public Land  
 Protocol Reference = ATR App F Sec 2  
 Agency = USBR  
 Measurements:  
 1. Type = Electronic Sounder Measurement  
 Interval = Monthly  
 Date Range = 10/27/2009 - 8/19/2011  
 2. Type =  
 Interval =  
 Date Range =  
 3. Type =  
 Interval =  
 Date Range =

Description:  
 2 inch PVC well FM  
  
 Root Depth (ft bgs) = 4.0  
 GS Buffer (ft) = -5.9  
 Screen Depth (ft bgs) = 37.0 - 57.0  
 Capillary Rise (ft) = 1.0  
 Historical GW level (ft bgs) = 50  
 Field Threshold (ft bgs) = 5  
 Threshold Elevation (ft NAVD88) = 229.5

Influences:  
 -  
  
 Last Updated:  
 5/23/2012  
 Preliminary Data



# Monitoring Location MW-09-26



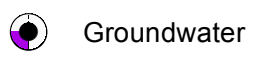
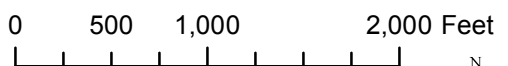


Reach = 1B  
 River Mile = 234.2  
 X = -120.0564 Y = 36.8265  
 (Horizontal Datum is NAD83)  
 Distance From River (ft)= 1275  
 Reference Elevation (ft NAVD88) = 236.8  
 Site = Hwy 145 SkaggsBridge  
 Land Use = Public Land  
 Protocol Reference = ATR App F Sec 2  
 Agency = USBR

**Measurements:**  
 1. Type = Electronic Sounder Measurement  
 Interval = Monthly  
 Date Range = 10/27/2009 - 8/19/2011  
 2. Type =  
 Interval =  
 Date Range =  
 3. Type =  
 Interval =  
 Date Range =

**Description:**  
 2 inch PVC well FM  
  
 Root Depth (ft bgs) = 4.0  
 GS Buffer (ft) = -6.7  
 Screen Depth (ft bgs) = 50.0 - 70.0  
 Capillary Rise (ft) = 1.0  
 Historical GW level (ft bgs) = 50  
 Field Threshold (ft bgs) = 5  
 Threshold Elevation (ft NAVD88) = 238.5

**Influences:**  
 -  
  
 Last Updated:  
 5/23/2012  
 Preliminary Data



# Monitoring Location MW-09-27





Reach = 1B  
 River Mile = 238.4  
 X = -119.9924 Y = 36.8297  
 (Horizontal Datum is NAD83)  
 Distance From River (ft)= 180  
 Reference Elevation (ft NAVD88) = 216.85  
 Site = Whitmore Orchard  
 Land Use = Pomegranate  
 Protocol Reference = ATR App F Sec 2  
 Agency = USBR

Madera County  
 Right Bank  
 Status = Temporary

**Measurements:**

1. Type = Electronic Sounder Measurement  
Interval = Monthly  
Date Range = 3/19/2010 - 8/5/2011
2. Type =  
Interval =  
Date Range =
3. Type =  
Interval =  
Date Range =

**Description:**

1.25 inch galv pipe

Root Depth (ft bgs) = 6.0  
 GS Buffer (ft) = 1.6  
 Screen Depth (ft bgs) = 2  
 Capillary Rise (ft) = 0.5\*  
 Historical GW level (ft bgs) = 50  
 Field Threshold (ft bgs) = 6.5  
 Threshold Elevation (ft NAVD88) =

**Influences:**  
 Landing Strip

\* = assumed value  
 bgs = below ground surface  
 NR = not recorded

Last Updated:  
 5/23/2012

Preliminary Data

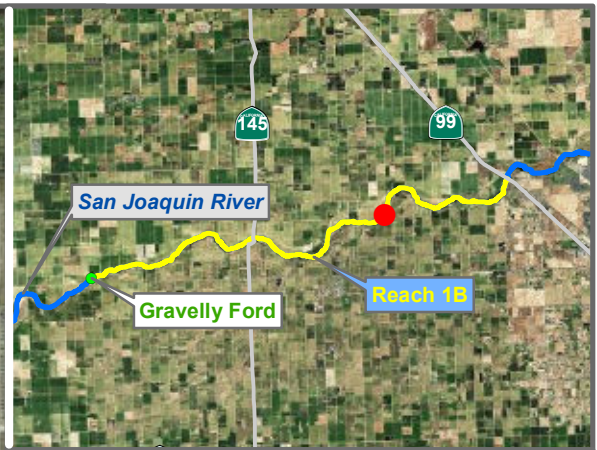
0 500 1,000 2,000 Feet



Groundwater

# Monitoring Location R1-1





Reach = 1B  
 River Mile = 238.4  
 X = -119.9931 Y = 36.8302  
 (Horizontal Datum is NAD83)  
 Distance From River (ft)= 453  
 Reference Elevation (ft NAVD88) = 218.38  
 Site = Whitmore Orchard  
 Land Use = Pomegranate  
 Protocol Reference = ATR App F Sec 2  
 Agency = USBR

Madera County  
 Right Bank  
 Status = Temporary

Measurements:  
 1. Type = Electronic Sounder Measurement  
 Interval = Monthly  
 Date Range = 3/19/2010 - 12/29/2011  
 2. Type =  
 Interval =  
 Date Range =  
 3. Type =  
 Interval =  
 Date Range =

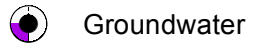
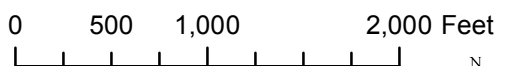
Description:  
 1.25 inch galv pipe

Root Depth (ft bgs) = 6.0  
 GS Buffer (ft) = 3.1  
 Screen Depth (ft bgs) = 6.5  
 Capillary Rise (ft) = 0.5  
 Historical GW level (ft bgs) = 50  
 Field Threshold (ft bgs) = 6.5  
 Threshold Elevation (ft NAVD88) =

Influences:  
 Landing Strip

\* = assumed value  
 bgs = below ground surface  
 NR = not recorded

Last Updated:  
 5/23/2012  
 Preliminary Data



# Monitoring Location R1-2