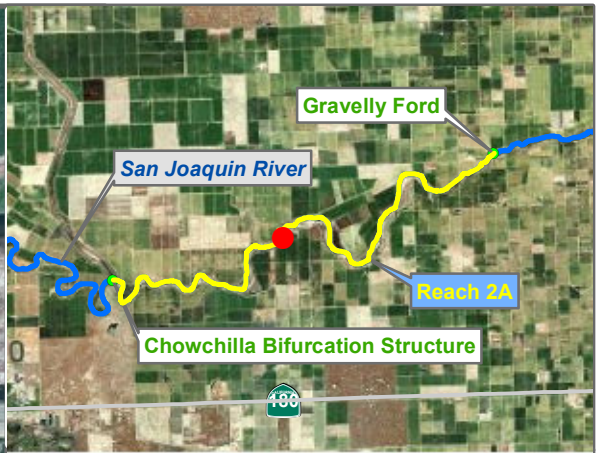


RECLAMATION
Managing Water in the West

Reach 2A GW Monitoring Locations



Preliminary Data



Reach = 2A
 River Mile = 222.1
 X = -120.2193 Y = 36.7850
 (Horizontal Datum is NAD83)
 Distance From River (ft) = 564
 Reference Elevation (ft NAVD88) = 179.84
 Site = Napa Ave.
 Land Use = River Channel
 Protocol Reference = ATR App F Sec 2
 Agency = USBR

Fresno County
 Left Bank
 Status = Existing

- Measurements:
- Type = Electronic Sounder Measurement
Interval = Monthly
Date Range = 5/20/2008 - 1/3/2012
 - Type =
Interval =
Date Range =
 - Type =
Interval =
Date Range =

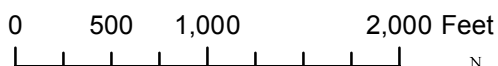
Description:
 2 inch PVC well

Root Depth (ft bgs) = 4.0
 GS Buffer (ft) = -4.6
 Screen Depth (ft bgs) = 15-25
 Capillary Rise (ft) = 1.0*
 Historical GW level (ft bgs) = 50
 Field Threshold (ft bgs) = 5
 Threshold Elevation (ft NAVD88) = 179.4

Influences:
 SJR, Canal

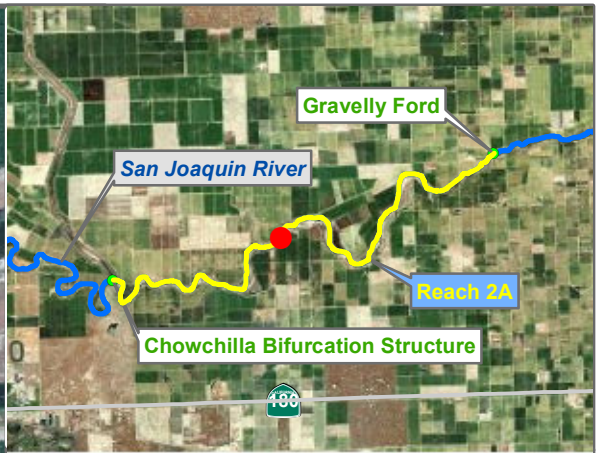
Last Updated:
 5/23/2012
 Preliminary Data

* = assumed value
 bgs = below ground surface
 NR = not recorded



Groundwater

Monitoring Location FA-4



Reach = 2A
 River Mile = 222.1
 X = -120.2201 Y = 36.7850
 Distance From River (ft) = 346
 Reference Elevation (ft NAVD88) = 179.45
 Site = Napa Ave.
 Land Use = River Channel
 Protocol Reference = ATR App F Sec 2
 Agency = USBR

Fresno County
 Left Bank
 Status = Existing

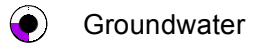
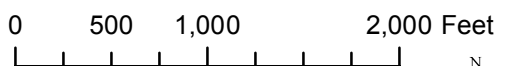
- Measurements:
- Type = Electronic Sounder Measurement
Interval = Monthly
Date Range = Currently Unavailable
 - Type = Datalogger
Interval = Hourly
Date Range = Currently Unavailable
 - Type =
Interval =
Date Range =

Description:
2 inch PVC well

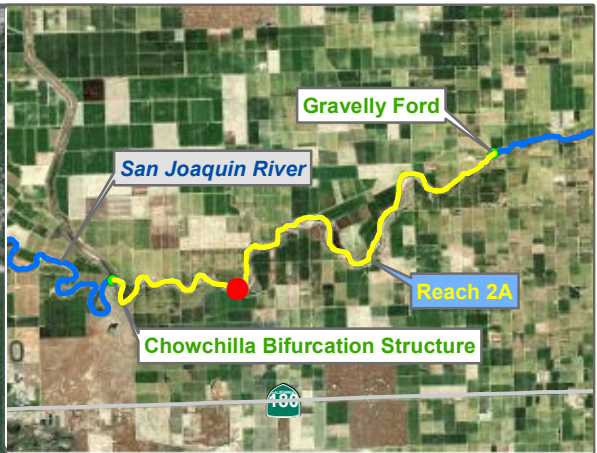
Root Depth (ft bgs) = 4.0
 GS Buffer (ft) = -4.7
 Screen Depth (ft bgs) = 15-20
 Capillary Rise (ft) = 1.0*
 Historical GW level (ft bgs) = 50
 Field Threshold (ft bgs) = 5
 Threshold Elevation (ft NAVD88) = 179.2

Influences:
SJR, Canal

Last Updated:
 5/24/2012
 Preliminary Data



Monitoring Location FA-5



Reach = 2A
 River Mile = 219.8
 X = -120.2375 Y = 36.7693
 (Horizontal Datum is NAD83)
 Distance From River (ft) = 127
 Reference Elevation (ft NAVD88) = 178.41
 Site = Transect 10
 Land Use = River Channel
 Protocol Reference = ATR App F Sec 2
 Agency = USBR

Fresno County
 Left Bank
 Status = Existing

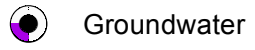
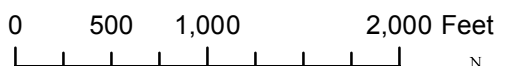
- Measurements:
- Type = Electronic Sounder Measurement
Interval = Monthly
Date Range = Currently Unavailable
 - Type = Datalogger
Interval = Hourly
Date Range = Currently Unavailable
 - Type =
Interval =
Date Range =

Description:
 2 inch PVC casing

Root Depth (ft bgs) = 4.0
 GS Buffer (ft) = 4.8
 Screen Depth (ft bgs) = 15-20
 Capillary Rise (ft) = 1.0*
 Historical GW level (ft bgs) = 50
 Field Threshold (ft bgs) = 5
 Threshold Elevation (ft NAVD88) = 168.6

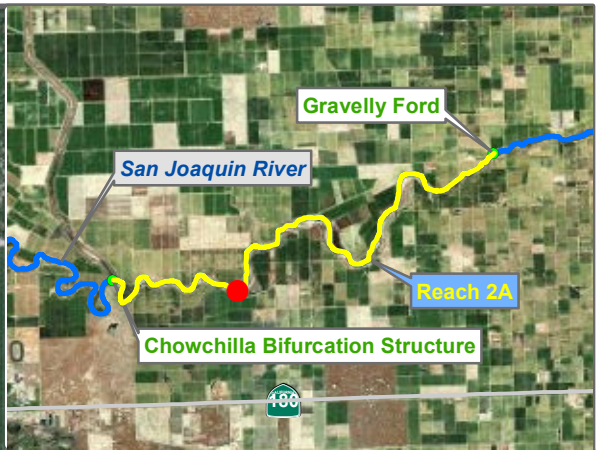
Influences:
SJR

Last Updated:
 5/24/2012
 Preliminary Data



Monitoring Location FA-6

* = assumed value
 bgs = below ground surface
 NR = not recorded



Reach = 2A
 River Mile = 219.8
 X = -120.2375 Y = 36.7689
 (Horizontal Datum is NAD83)
 Distance From River (ft)= 262
 Reference Elevation (ft NAVD88) = 178.96
 Site = Transect 10
 Land Use = Almond
 Protocol Reference = ATR App F Sec 2
 Agency = USBR

Measurements:
 1. Type = Electronic Sounder Measurement
 Interval = Monthly
 Date Range = Currently Unavailable
 2. Type = Datalogger
 Interval = Hourly
 Date Range = Currently Unavailable
 3. Type =
 Interval =
 Date Range =

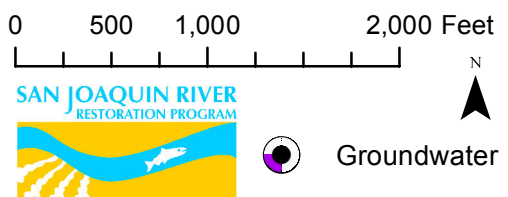
Description:
 2 inch PVC casing

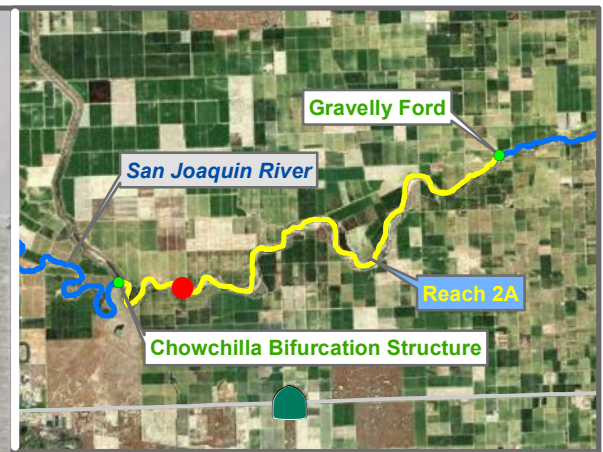
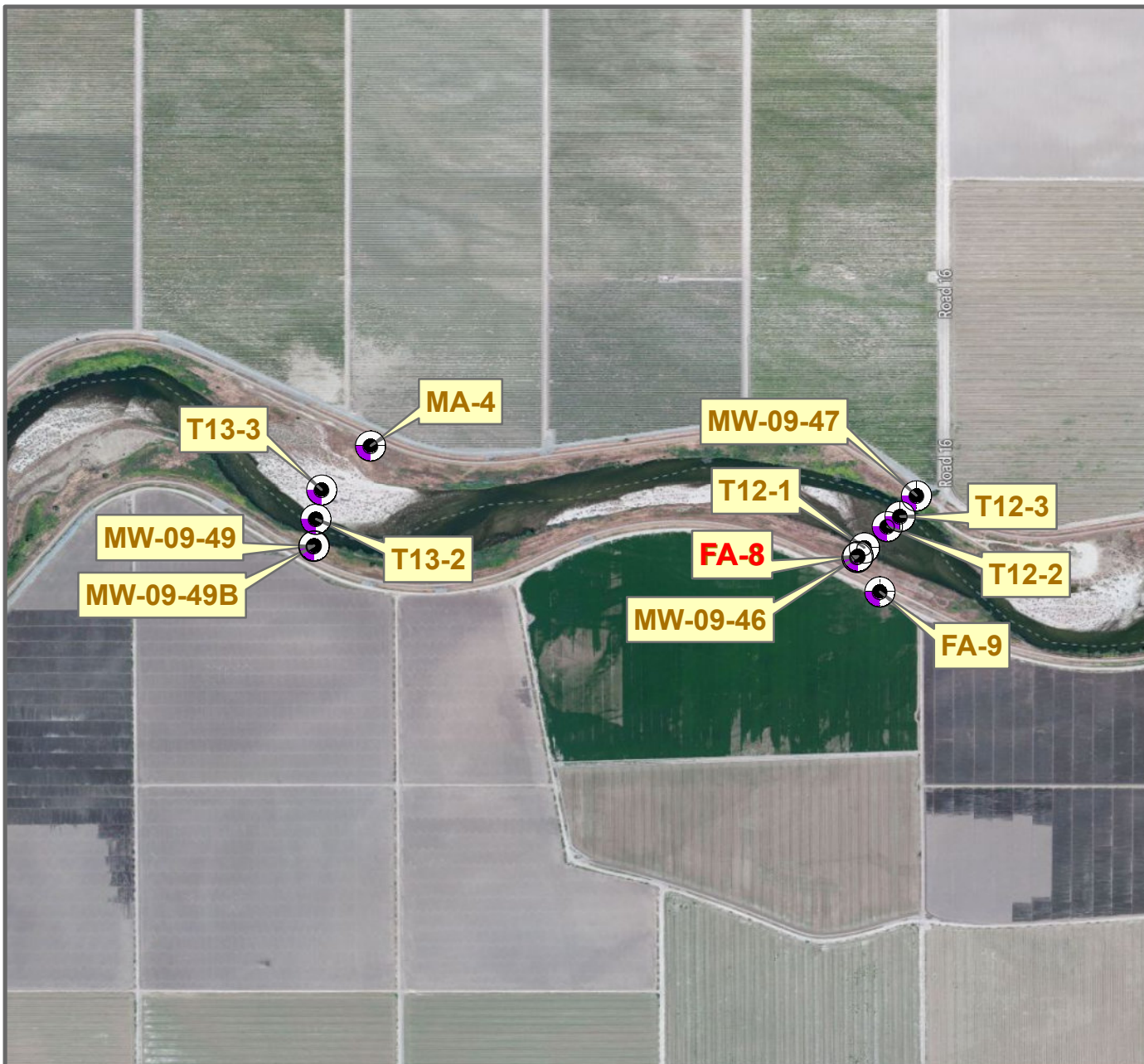
 Root Depth (ft bgs) = 9.0
 GS Buffer (ft) = 5.6
 Screen Depth (ft bgs) = 12-32
 Capillary Rise (ft) = 1.0*
 Historical GW level (ft bgs) = 50
 Field Threshold (ft bgs) = 10
 Threshold Elevation (ft NAVD88) = 163.4

Influences:
 SJR

 Last Updated:
 5/24/2012
 Preliminary Data

Monitoring Location FA-7





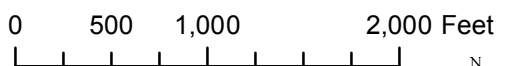
Reach = 2A
 River Mile = 218.2
 X = -120.2608 Y = 36.7711
 (Horizontal Datum is NAD83)
 Distance From River (ft) = 350
 Reference Elevation (ft NAVD88) = 172.7
 Site = Transect 12
 Land Use = River Channel
 Protocol Reference = ATR App F Sec 2
 Agency = USBR
 Measurements:
 1. Type = Electronic Sounder Measurement
 Interval = Monthly
 Date Range = Currently Unavailable
 2. Type = Datalogger
 Interval = Hourly
 Date Range = Currently Unavailable
 3. Type =
 Interval =
 Date Range =

Description:
 2 inch PVC casing

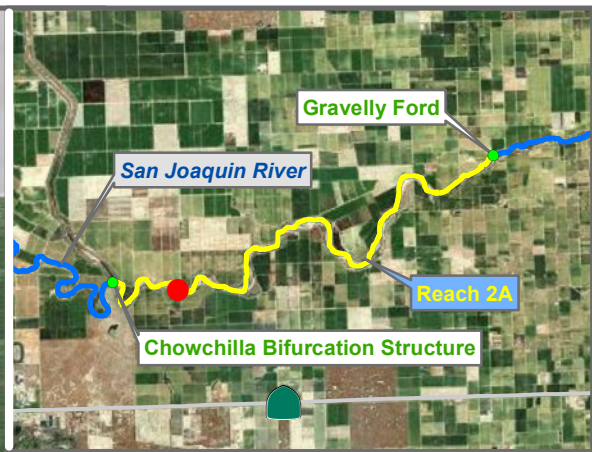
 Root Depth (ft bgs) = 4.0
 GS Buffer (ft) = 1.7
 Screen Depth (ft bgs) = 15-30
 Capillary Rise (ft) = 1.0*
 Historical GW level (ft bgs) = 50
 Field Threshold (ft bgs) = 5
 Threshold Elevation (ft NAVD88) = 166.0

Influences:
 SJR

 Last Updated:
 5/24/2012
 Preliminary Data



Monitoring Location FA-8



Reach = 2A
 River Mile = 218.2
 X = -120.2604 Y = 36.7705
 (Horizontal Datum is NAD83)
 Distance From River (ft) = 369
 Reference Elevation (ft NAVD88) = 173.98
 Site = Transect 12
 Land Use = Alfalfa
 Protocol Reference = ATR App F Sec 2
 Agency = USBR
 Measurements:
 1. Type = Electronic Sounder Measurement
 Interval = Weekly - Priority
 Date Range = Currently Unavailable
 2. Type = Datalogger
 Interval = Hourly
 Date Range = Currently Unavailable
 3. Type =
 Interval =
 Date Range =

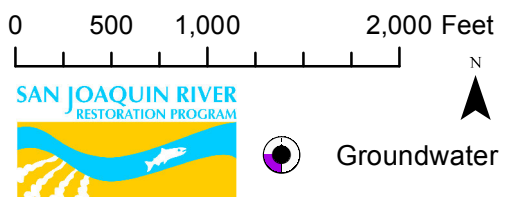
Description:
 2 inch PVC casing

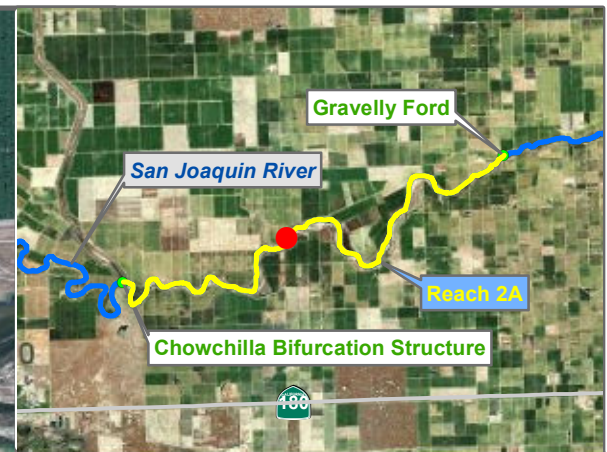
 Root Depth (ft bgs) = 4.0
 GS Buffer (ft) = 3.7
 Screen Depth (ft bgs) = 12-32
 Capillary Rise (ft) = 1.0*
 Historical GW level (ft bgs) = 50
 Field Threshold (ft bgs) = 5
 Threshold Elevation (ft NAVD88) = 167.8

Influences:
 SJR

 Last Updated:
 5/24/2012
 Preliminary Data

Monitoring Location FA-9





Reach = 2A
 River Mile = 222.1
 X = -120.2219 Y = 36.7856
 (Horizontal Datum is NAD83)
 Distance From River (ft) = 206
 Reference Elevation (ft NAVD88) = 182.69
 Site = Napa Ave.
 Land Use = Annual Crops
 Protocol Reference = ATR App F Sec 2
 Agency = USBR

Madera County
 Right Bank
 Status = Existing

Measurements:

1. Type = Electronic Sounder Measurement
Interval = Monthly
Date Range = Currently Unavailable
2. Type = Datalogger
Interval = Hourly
Date Range = Currently Unavailable
3. Type =
Interval =
Date Range =

Description:

2 inch PVC well

Root Depth (ft bgs) = 4.0
 GS Buffer (ft) = 2.9
 Screen Depth (ft bgs) = 12-32
 Capillary Rise (ft) = 1.0*
 Historical GW level (ft bgs) = 50
 Field Threshold (ft bgs) = 5
 Threshold Elevation (ft NAVD88) = 174.8

Influences:
 SJR

Last Updated:
 5/24/2012
 Preliminary Data

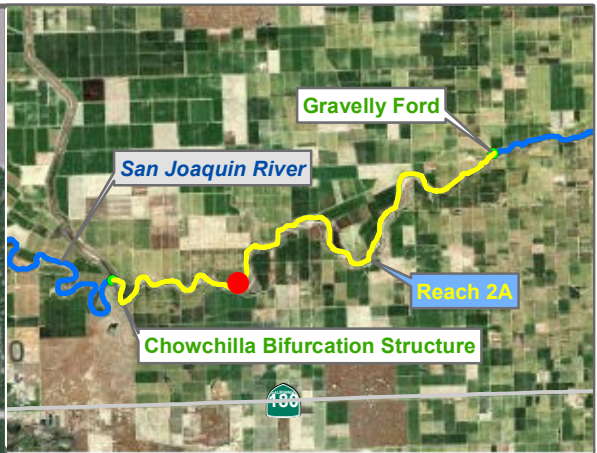
* = assumed value
 bgs = below ground surface
 NR = not recorded

0 500 1,000 2,000 Feet



Groundwater

Monitoring Location MA-2



Reach = 2A
 River Mile = 219.8
 X = -120.2372 Y = 36.7713
 (Horizontal Datum is NAD83)

Distance From River (ft)= 637
 Reference Elevation (ft NAVD88) = 179
 Site = Transect 10
 Land Use = Annual Crops
 Protocol Reference = ATR App F Sec 2
 Agency = USBR

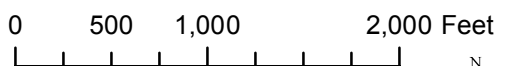
Measurements:
 1. Type = Electronic Sounder Measurement
 Interval = Monthly
 Date Range = Currently Unavailable
 2. Type = Datalogger
 Interval = Hourly
 Date Range = Currently Unavailable
 3. Type =
 Interval =
 Date Range =

Description:
 2 inch PVC casing

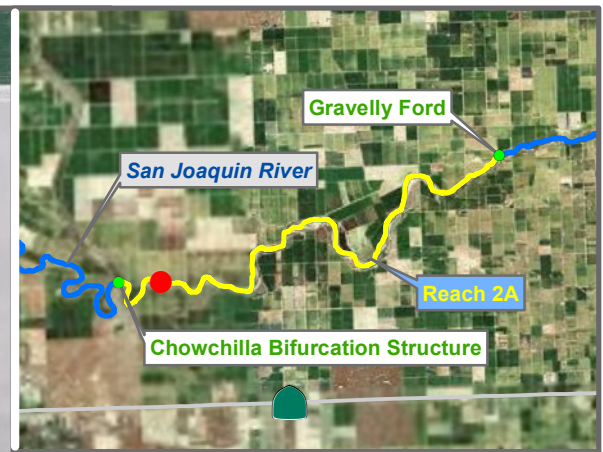
Root Depth (ft bgs) = 4.0
 GS Buffer (ft) = 0.9
 Screen Depth (ft bgs) = 14.5-34.5
 Capillary Rise (ft) = 1.0*
 Historical GW level (ft bgs) = 50
 Field Threshold (ft bgs) = 5
 Threshold Elevation (ft NAVD88) = 173.1

Influences:
 SJR

Last Updated:
 5/24/2012
 Preliminary Data



Monitoring Location MA-3



Reach = 2A
 River Mile = 217.2
 X = -120.2692 Y = 36.7730
 (Horizontal Datum is NAD83)
 Distance From River (ft) = 536
 Reference Elevation (ft NAVD88) = 174.45
 Site = Transect 13
 Land Use = Vineyard w Drains
 Protocol Reference = ATR App F Sec 2
 Agency = USBR

Madera County
 Right Bank
 Status = Existing

Measurements:

1. Type = Electronic Sounder Measurement
Interval = Weekly - Priority
Date Range = Currently Unavailable
2. Type = Datalogger
Interval = Hourly
Date Range = Currently Unavailable
3. Type =
Interval =
Date Range =

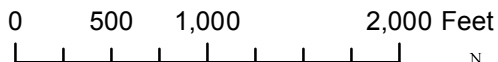
Description:

2 inch PVC casing

Root Depth (ft bgs) = 6.0
 GS Buffer (ft) = 6.1
 Screen Depth (ft bgs) = 15-25
 Capillary Rise (ft) = 1.0*
 Historical GW level (ft bgs) = 50
 Field Threshold (ft bgs) = 7
 Threshold Elevation (ft NAVD88) = 166.0

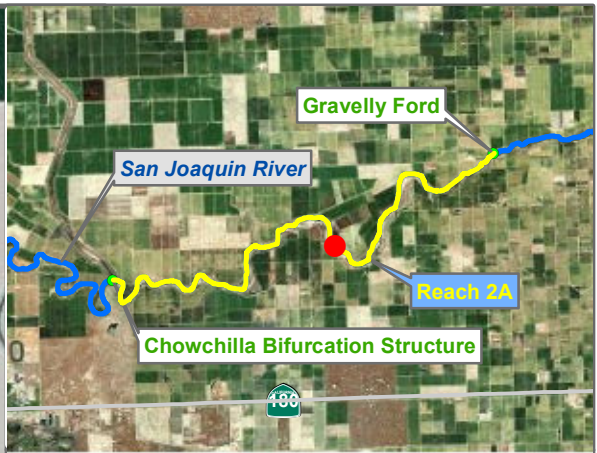
Influences:
 SJR

Monitoring Location MA-4



Groundwater

* = assumed value
 bgs = below ground surface
 NR = not recorded



Reach = 2A
 River Mile = 223.8
 X = -120.1996 Y = 36.7819
 (Horizontal Datum is NAD83)
 Distance From River (ft) = 305
 Reference Elevation (ft NAVD88) = 191
 Site = Shields Ave.
 Land Use = Annual Crops
 Protocol Reference = ATR App F Sec 2
 Agency = USBR

Madera County
 Right Bank
 Status = Existing

- Measurements:
1. Type = Electronic Sounder Measurement
Interval = Monthly
Date Range = 10/16/2009 - 1/3/2012
 2. Type =
Interval =
Date Range =
 3. Type =
Interval =
Date Range =

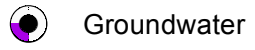
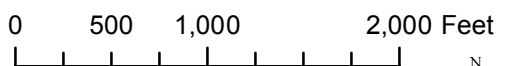
Description:
 2 inch PVC well FM

Root Depth (ft bgs) = 4.0
 GS Buffer (ft) = 4.5
 Screen Depth (ft bgs) = 17.0 - 37.0
 Capillary Rise (ft) = 1.0
 Historical GW level (ft bgs) = 50
 Field Threshold (ft bgs) = 5
 Threshold Elevation (ft NAVD88) = 181.5

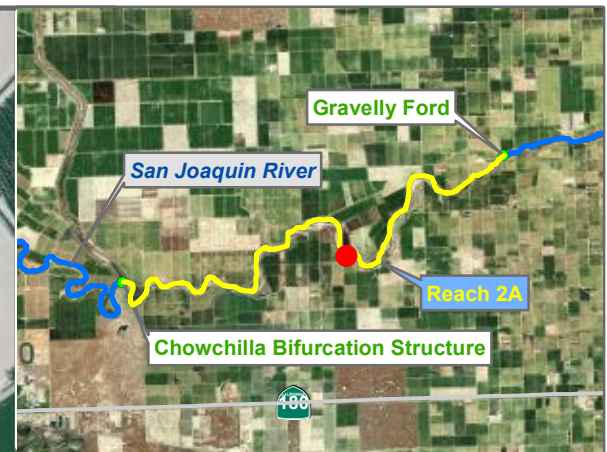
Influences:
 SJR

Last Updated:
 5/23/2012
 Preliminary Data

* = assumed value
 bgs = below ground surface
 NR = not recorded



Monitoring Location MW-09-36



Reach = 2A
 River Mile = 223.8
 X = -120.1990 Y = 36.7794
 (Horizontal Datum is NAD83)
 Distance From River (ft) = 389
 Reference Elevation (ft NAVD88) = 191.8
 Site = Shields Ave.
 Land Use =
 Protocol Reference = ATR App F Sec 2
 Agency = USBR
 Measurements:
 1. Type = Electronic Sounder Measurement
 Interval = Monthly
 Date Range = Currently Unavailable
 2. Type = Datalogger
 Interval = Hourly
 Date Range = Currently Unavailable
 3. Type =
 Interval =
 Date Range =

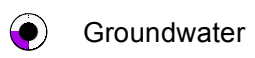
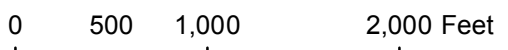
Description:
 2 inch PVC well FM, deep well, no threshold

Root Depth (ft bgs) =
 GS Buffer (ft) = 4.2
 Screen Depth (ft bgs) = 67.0 - 87.0
 Capillary Rise (ft) = 1.0
 Historical GW level (ft bgs) = 50
 Field Threshold (ft bgs) =
 Threshold Elevation (ft NAVD88) =

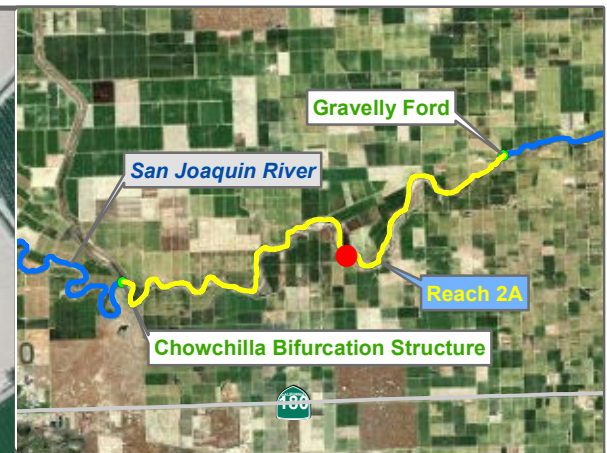
Influences:
 SJR

* = assumed value
 bgs = below ground surface
 NR = not recorded

Last Updated:
 5/24/2012
 Preliminary Data



Monitoring Location MW-09-37



Reach = 2A
 River Mile = 223.8
 X = -120.1990 Y = 36.7795
 (Horizontal Datum is NAD83)
 Distance From River (ft) = 384
 Reference Elevation (ft NAVD88) = 192.1
 Site = Shields Ave.
 Land Use = Vineyard
 Protocol Reference = ATR App F Sec 2
 Agency = USBR
 Measurements:
 1. Type = Electronic Sounder Measurement
 Interval = Monthly
 Date Range = Currently Unavailable
 2. Type = Datalogger
 Interval = Hourly
 Date Range = Currently Unavailable
 3. Type =
 Interval =
 Date Range =

Description:
 2 inch PVC well FM

Root Depth (ft bgs) = 6.0
 GS Buffer (ft) = 3.1
 Screen Depth (ft bgs) = 15.0 - 25.0
 Capillary Rise (ft) = 1.0
 Historical GW level (ft bgs) = 50
 Field Threshold (ft bgs) = 7
 Threshold Elevation (ft NAVD88) = 182.1

Influences:
 SJR

* = assumed value
 bgs = below ground surface
 NR = not recorded

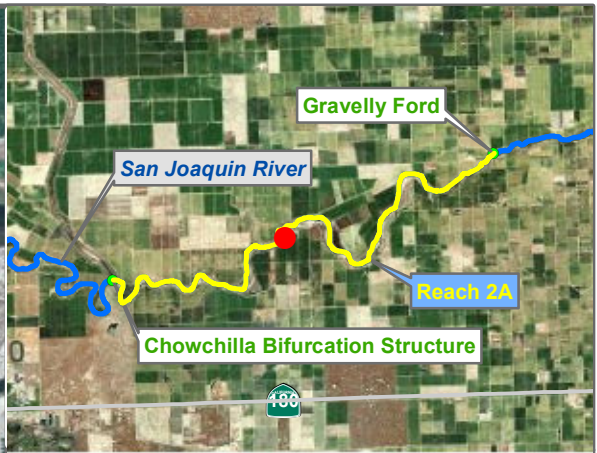
Last Updated:
 5/24/2012
 Preliminary Data

0 500 1,000 2,000 Feet



Groundwater

Monitoring Location MW-09-37B



Reach = 2A
 River Mile = 222.1
 X = -120.2186 Y = 36.7849
 (Horizontal Datum is NAD83)
 Distance From River (ft) = 774
 Reference Elevation (ft NAVD88) = 184.9
 Site = Napa Ave.
 Land Use =
 Protocol Reference = ATR App F Sec 2
 Agency = USBR

Fresno County
 Left Bank
 Status = Existing

- Measurements:
- Type = Electronic Sounder Measurement
Interval = Monthly
Date Range = 9/25/2009 - 1/3/2012
 - Type =
Interval =
Date Range =
 - Type =
Interval =
Date Range =

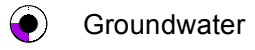
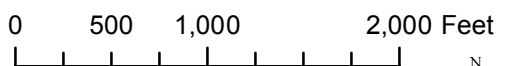
Description:
 2 inch PVC casing FM, deep well, no threshold

Root Depth (ft bgs) =
 GS Buffer (ft) = 1.6
 Screen Depth (ft bgs) = 72.0 - 87.0
 Capillary Rise (ft) = 0.5
 Historical GW level (ft bgs) = 50
 Field Threshold (ft bgs) =
 Threshold Elevation (ft NAVD88) =

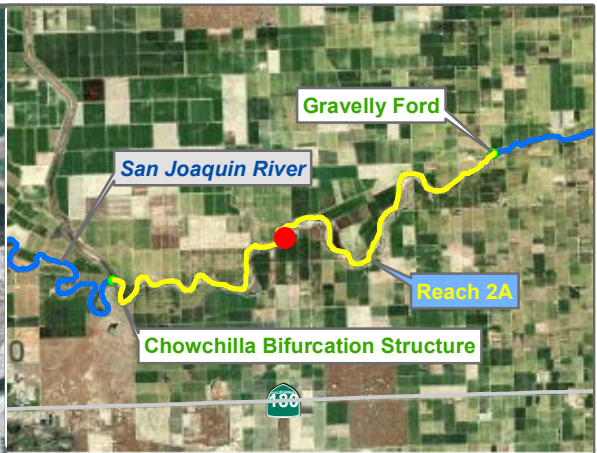
Influences:

* = assumed value
 bgs = below ground surface
 NR = not recorded

Last Updated:
 5/23/2012
 Preliminary Data



Monitoring Location MW-09-39



Reach = 2A
 River Mile = 222.1
 X = -120.2186 Y = 36.7849
 Distance From River (ft) = 774
 Reference Elevation (ft NAVD88) = 184.9
 Site = Napa Ave.
 Land Use = Almond
 Protocol Reference = ATR App F Sec 2
 Agency = USBR

Fresno County
 Left Bank
 Status = Existing

- Measurements:
- Type = Electronic Sounder Measurement
Interval = Monthly
Date Range = Currently Unavailable
 - Type = Datalogger
Interval = Hourly
Date Range = Currently Unavailable
 - Type =
Interval =
Date Range =

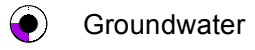
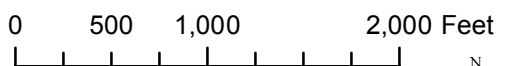
Description:
2 inch PVC casing FM

Root Depth (ft bgs) = 9.0
 GS Buffer (ft) = 0.5
 Screen Depth (ft bgs) = 14.5 - 24.5
 Capillary Rise (ft) = 0.5
 Historical GW level (ft bgs) = 50
 Field Threshold (ft bgs) = 9.5
 Threshold Elevation (ft NAVD88) = 174.9

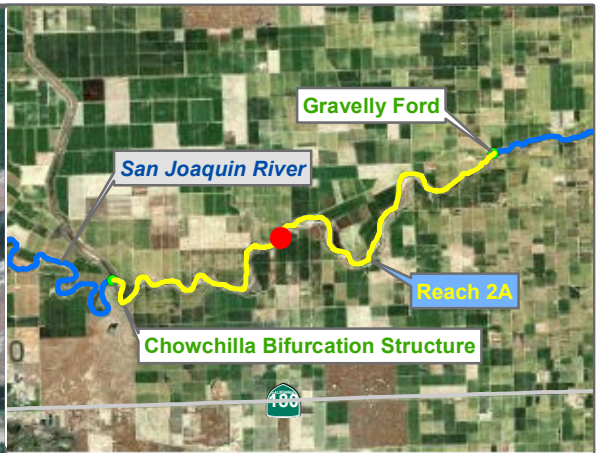
Influences:
-

* = assumed value
 bgs = below ground surface
 NR = not recorded

Last Updated:
 5/24/2012
 Preliminary Data



Monitoring Location MW-09-39B



Reach = 2A
 River Mile = 222.1
 X = -120.2201 Y = 36.7851
 Distance From River (ft) = 342
 Reference Elevation (ft NAVD88) = 180.7
 Site = Napa Ave.
 Land Use =
 Protocol Reference = ATR App F Sec 2
 Agency = USBR

Fresno County
 Left Bank
 Status = Existing

- Measurements:
- Type = Electronic Sounder Measurement
Interval = Monthly
Date Range = Currently Unavailable
 - Type = Datalogger
Interval = Hourly
Date Range = Currently Unavailable
 - Type =
Interval =
Date Range =

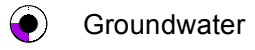
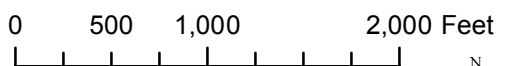
Description:
 2 inch PVC casing FM, deep well, no threshold

Root Depth (ft bgs) =
 GS Buffer (ft) = -3.4
 Screen Depth (ft bgs) = 62.0 - 82.0
 Capillary Rise (ft) = 0.5
 Historical GW level (ft bgs) = 50
 Field Threshold (ft bgs) =
 Threshold Elevation (ft NAVD88) =

Influences:
 SJR

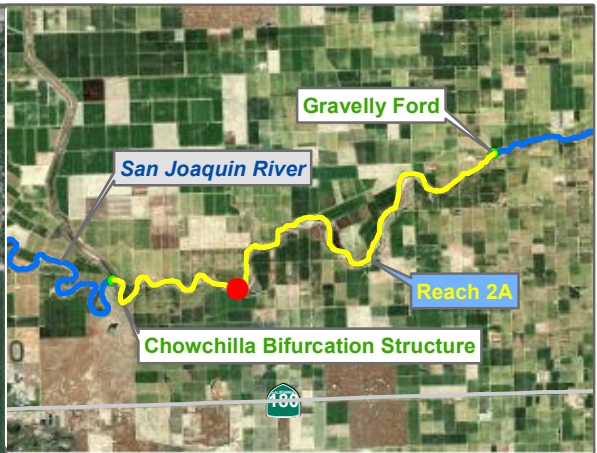
Last Updated:
 5/24/2012
 Preliminary Data

* = assumed value
 bgs = below ground surface
 NR = not recorded



Monitoring Location

MW-09-41



Reach = 2A
 River Mile = 219.8
 X = -120.2375 Y = 36.7692
 (Horizontal Datum is NAD83)

Distance From River (ft)= 136
 Reference Elevation (ft NAVD88) = 179.2
 Site = Transect 10
 Land Use =
 Protocol Reference = ATR App F Sec 2
 Agency = USBR

Measurements:
 1. Type = Electronic Sounder Measurement
 Interval = Monthly
 Date Range = Currently Unavailable
 2. Type = Datalogger
 Interval = Hourly
 Date Range = Currently Unavailable
 3. Type =
 Interval =
 Date Range =

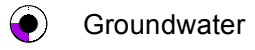
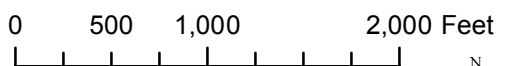
Description:
 2 inch PVC casing FM, deep well, no threshold

Root Depth (ft bgs) =
 GS Buffer (ft) = 4.4
 Screen Depth (ft bgs) = 41.5 - 61.5
 Capillary Rise (ft) = 1.0
 Historical GW level (ft bgs) = 50
 Field Threshold (ft bgs) =
 Threshold Elevation (ft NAVD88) =

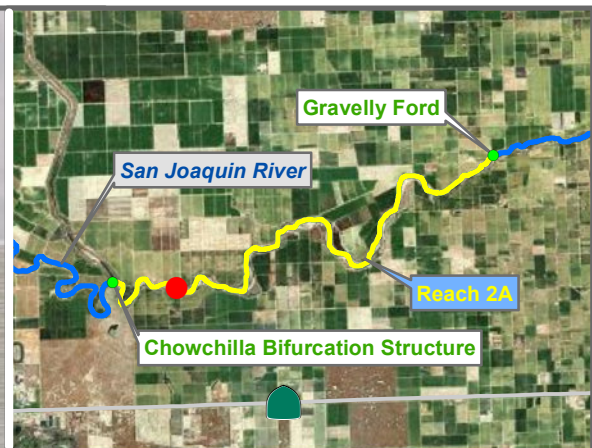
Influences:
 SJR

* = assumed value
 bgs = below ground surface
 NR = not recorded

Last Updated:
 5/24/2012
 Preliminary Data



Monitoring Location MW-09-44



Reach = 2A
 River Mile = 218.2
 X = -120.2608 Y = 36.7710
 (Horizontal Datum is NAD83)
 Distance From River (ft) = 357
 Reference Elevation (ft NAVD88) = 173.5
 Site = Transect 12
 Land Use =
 Protocol Reference = ATR App F Sec 2
 Agency = USBR
 Measurements:
 1. Type = Electronic Sounder Measurement
 Interval = Monthly
 Date Range = Currently Unavailable
 2. Type = Datalogger
 Interval = Hourly
 Date Range = Currently Unavailable
 3. Type =
 Interval =
 Date Range =

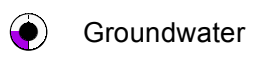
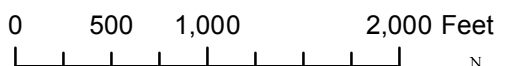
Description:
 2 inch PVC casing FM, deep well, no threshold

Root Depth (ft bgs) =
 GS Buffer (ft) = 4.3
 Screen Depth (ft bgs) = 42.0 - 62.0
 Capillary Rise (ft) = 1.0
 Historical GW level (ft bgs) = 50
 Field Threshold (ft bgs) =
 Threshold Elevation (ft NAVD88) =

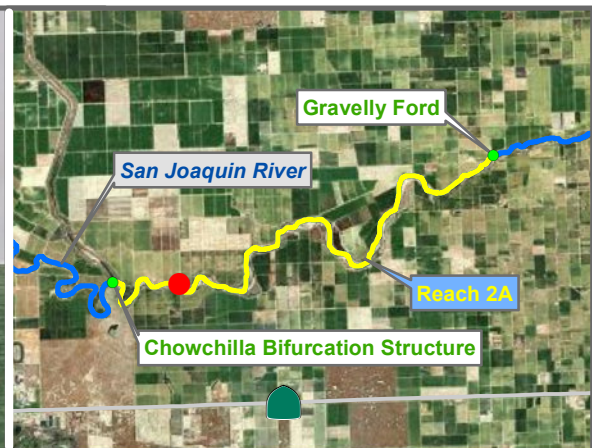
Influences:
 SJR

* = assumed value
 bgs = below ground surface
 NR = not recorded

Last Updated:
 5/24/2012
 Preliminary Data



Monitoring Location MW-09-46



Reach = 2A
 River Mile = 218.2
 X = -120.2598 Y = 36.7721
 (Horizontal Datum is NAD83)
 Distance From River (ft) = 121
 Reference Elevation (ft NAVD88) = 174.7
 Site = Transect 12
 Land Use = Vineyard w Drains
 Protocol Reference = ATR App F Sec 2
 Agency = USBR

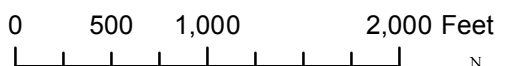
Measurements:
 1. Type = Electronic Sounder Measurement
 Interval = Weekly - Priority
 Date Range = Currently Unavailable
 2. Type = Datalogger
 Interval = Hourly
 Date Range = Currently Unavailable
 3. Type =
 Interval =
 Date Range =

Description:
 2 inch PVC casing FM

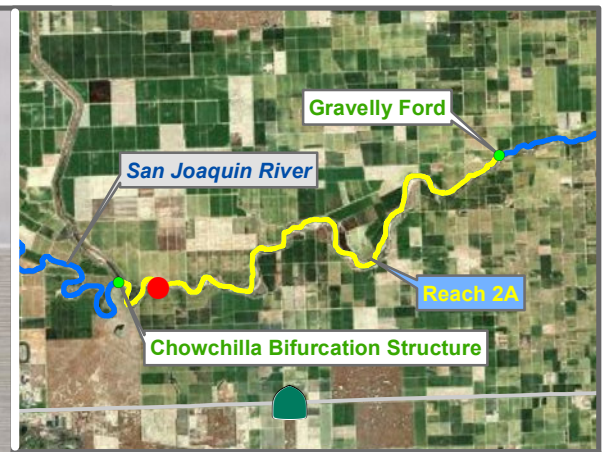
 Root Depth (ft bgs) = 6.0
 GS Buffer (ft) = 3.5
 Screen Depth (ft bgs) = 20.0 - 40.0
 Capillary Rise (ft) = 1.0
 Historical GW level (ft bgs) = 50
 Field Threshold (ft bgs) = 7
 Threshold Elevation (ft NAVD88) = 167.5

Influences:
 SJR

 Last Updated:
 5/24/2012
 Preliminary Data



Monitoring Location MW-09-47



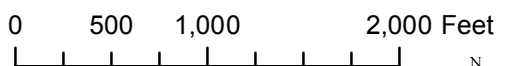
Reach = 2A
 River Mile = 217.2
 X = -120.2702 Y = 36.7712
 (Horizontal Datum is NAD83)
 Distance From River (ft) = 114
 Reference Elevation (ft NAVD88) = 171
 Site = Transect 13
 Land Use =
 Protocol Reference = ATR App F Sec 2
 Agency = USBR
 Measurements:
 1. Type = Electronic Sounder Measurement
 Interval = Monthly
 Date Range = Currently Unavailable
 2. Type = Datalogger
 Interval = Hourly
 Date Range = Currently Unavailable
 3. Type =
 Interval =
 Date Range =

Description:
 2 inch PVC casing FM, deep well, no threshold

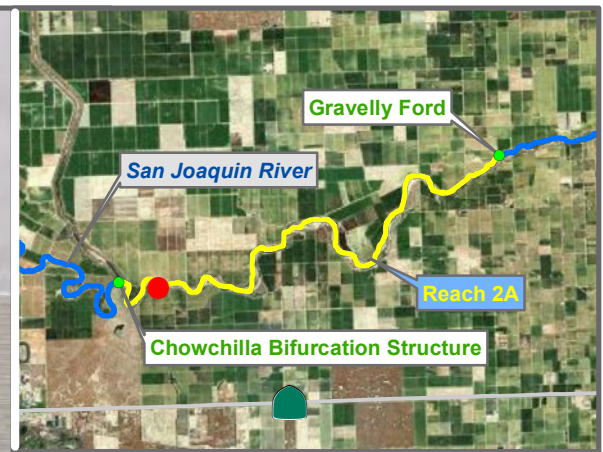
Root Depth (ft bgs) =
 GS Buffer (ft) = 1.8
 Screen Depth (ft bgs) = 50.0 - 60.0
 Capillary Rise (ft) = 0.5
 Historical GW level (ft bgs) = 50
 Field Threshold (ft bgs) =
 Threshold Elevation (ft NAVD88) =

Influences:
 SJR

Last Updated:
 5/24/2012
 Preliminary Data



Monitoring Location MW-09-49



Reach = 2A
 River Mile = 217.2
 X = -120.2702 Y = 36.7712
 (Horizontal Datum is NAD83)
 Distance From River (ft) = 110
 Reference Elevation (ft NAVD88) = 170.9
 Site = Transect 13
 Land Use = Annual Crops w Drains
 Protocol Reference = ATR App F Sec 2
 Agency = USBR

Measurements:
 1. Type = Electronic Sounder Measurement
 Interval = Weekly - Priority
 Date Range = Currently Unavailable
 2. Type = Datalogger
 Interval = Hourly
 Date Range = Currently Unavailable
 3. Type =
 Interval =
 Date Range =

Description:
 2 inch PVC casing FM

 Root Depth (ft bgs) = 4.0
 GS Buffer (ft) = 1.7
 Screen Depth (ft bgs) = 10.0 - 20.0
 Capillary Rise (ft) = 0.5
 Historical GW level (ft bgs) = 50
 Field Threshold (ft bgs) = 4.5
 Threshold Elevation (ft NAVD88) = 167.1

Influences:
 SJR

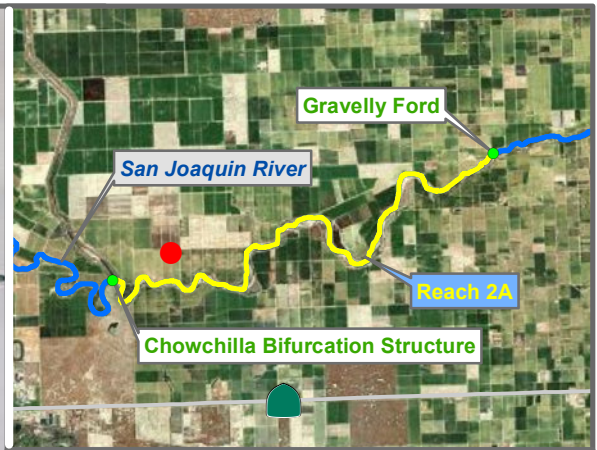
Last Updated:
 5/24/2012
 Preliminary Data

Monitoring Location MW-09-49B

0 500 1,000 2,000 Feet



Groundwater



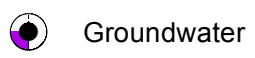
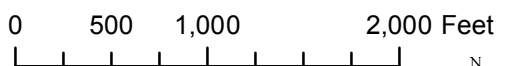
Reach = 2A
 River Mile =
 X = -120.2627 Y = 36.7813 Status =
 (Horizontal Datum is NAD83)
 Distance From River Centerline (ft)=
 Reference Elevation (ft NAVD88) = 171.615
 Site =
 Land Use =
 Protocol Reference =
 Agency = USBR
 Measurements:
 1. Type = Electronic Sounder Measurement
 Interval =
 Date Range = Currently Unavailable
 2. Type =
 Interval =
 Date Range =
 3. Type =
 Interval =
 Date Range =

Description:

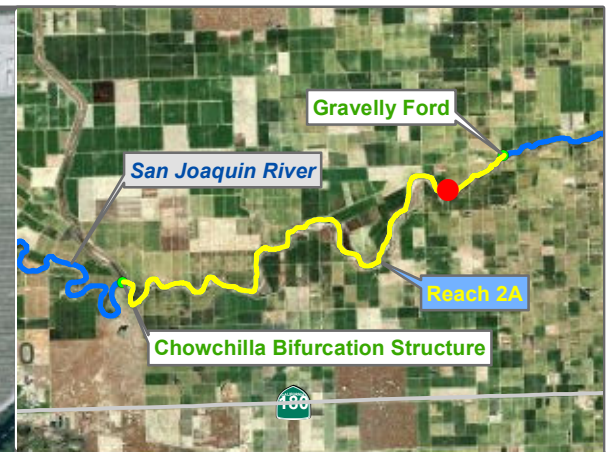
 Root Depth (ft bgs) =
 GS Buffer (ft) =
 Screen Depth (ft bgs) =
 Capillary Rise (ft) =
 Historical GW level (ft bgs) = 50
 Field Threshold (ft bgs) =
 Threshold Elevation (ft NAVD88) =

Influences:

 Last Updated:
 5/24/2012
 Preliminary Data



Monitoring Location MW-11-151



Reach = 2A
 River Mile =
 X = -120.1592 Y = 36.7991
 (Horizontal Datum is NAD83)
 Distance From River Centerline (ft)=
 Reference Elevation (ft NAVD88) = 199.869
 Site =
 Land Use =
 Protocol Reference =
 Agency = USBR
 Measurements:
 1. Type = Electronic Sounder Measurement
 Interval =
 Date Range = Currently Unavailable
 2. Type =
 Interval =
 Date Range =
 3. Type =
 Interval =
 Date Range =

Description:

Root Depth (ft bgs) =
 GS Buffer (ft) =
 Screen Depth (ft bgs) =
 Capillary Rise (ft) =
 Historical GW level (ft bgs) = 50
 Field Threshold (ft bgs) =
 Threshold Elevation (ft NAVD88) =

Influences:

* = assumed value
 bgs = below ground surface
 NR = not recorded

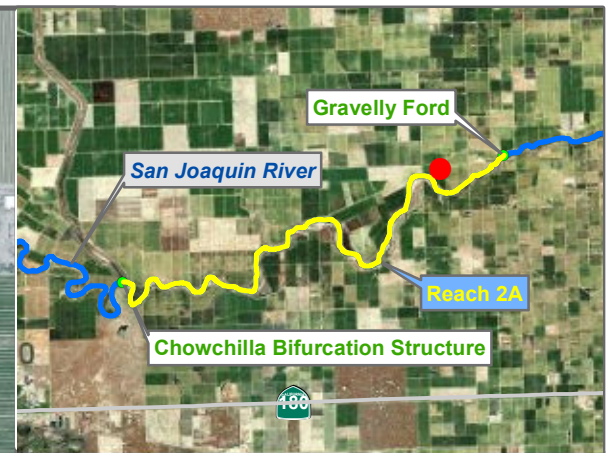
Last Updated:
 5/24/2012
 Preliminary Data

0 500 1,000 2,000 Feet



Groundwater

Monitoring Location MW-11-158



Reach = 2A
 River Mile =
 X = -120.1619 Y = 36.8054
 (Horizontal Datum is NAD83)
 Distance From River Centerline (ft)=
 Reference Elevation (ft NAVD88) = 200.116
 Site =
 Land Use =
 Protocol Reference =
 Agency = USBR
 Measurements:
 1. Type = Electronic Sounder Measurement
 Interval =
 Date Range = Currently Unavailable
 2. Type =
 Interval =
 Date Range =
 3. Type =
 Interval =
 Date Range =

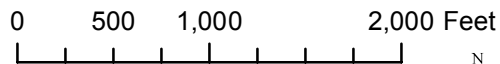
Description:

Root Depth (ft bgs) =
 GS Buffer (ft) =
 Screen Depth (ft bgs) =
 Capillary Rise (ft) =
 Historical GW level (ft bgs) = 50
 Field Threshold (ft bgs) =
 Threshold Elevation (ft NAVD88) =

Influences:

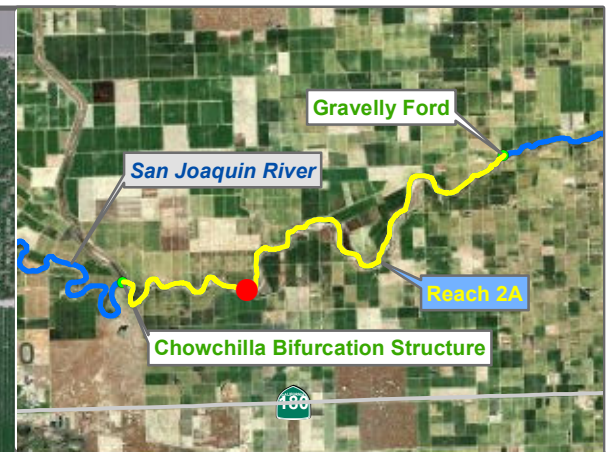
* = assumed value
 bgs = below ground surface
 NR = not recorded

Last Updated:
 5/24/2012
 Preliminary Data



Groundwater

Monitoring Location MW-11-159



Reach = 2A
 River Mile = 219.8
 X = -120.2376 Y = 36.7697
 (Horizontal Datum is NAD83)
 Distance From River (ft) = 39
 Reference Elevation (ft NAVD88) = 171.1
 Site = Transect 10
 Land Use = River Channel
 Protocol Reference = ATR App F Sec 2
 Agency = USBR

Madera County
 Center Bank
 Status = Existing

Measurements:

1. Type = Electronic Sounder Measurement
Interval = Monthly
Date Range = 11/7/2009 - 12/1/2009
2. Type =
Interval =
Date Range =
3. Type =
Interval =
Date Range =

Description:

2 inch PVC casing, in channel, no threshold

Root Depth (ft bgs) = 4.0
 GS Buffer (ft) =
 Screen Depth (ft bgs) =
 Capillary Rise (ft) =
 Historical GW level (ft bgs) = 50
 Field Threshold (ft bgs) = 4
 Threshold Elevation (ft NAVD88) = 167.1

Influences:
 SJR

Last Updated:
 5/23/2012
 Preliminary Data

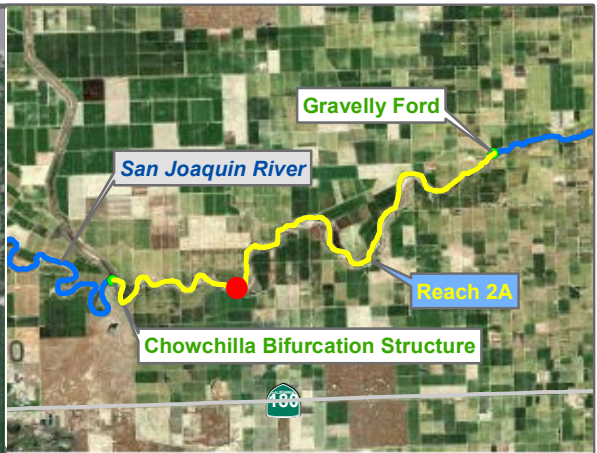
* = assumed value
 bgs = below ground surface
 NR = not recorded

0 500 1,000 2,000 Feet



Groundwater

Monitoring Location T10-1 (1m)



Reach = 2A
 River Mile = 219.8
 X = -120.2376 Y = 36.7697
 (Horizontal Datum is NAD83)

Distance From River (ft) = 39
 Reference Elevation (ft NAVD88) = 171.1
 Site = Transect 10
 Land Use = River Channel
 Protocol Reference = ATR App F Sec 2
 Agency = USBR

Measurements:
 1. Type = Electronic Sounder Measurement
 Interval = Monthly
 Date Range = 7/21/2008 - 3/2/2010
 2. Type =
 Interval =
 Date Range =
 3. Type =
 Interval =
 Date Range =

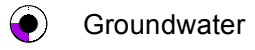
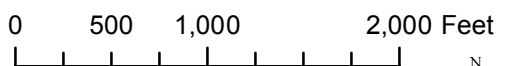
Description:
 2 inch steel casing, in channel, no threshold

Root Depth (ft bgs) = 4.0
 GS Buffer (ft) =
 Screen Depth (ft bgs) =
 Capillary Rise (ft) =
 Historical GW level (ft bgs) = 50
 Field Threshold (ft bgs) = 4
 Threshold Elevation (ft NAVD88) = 167.1

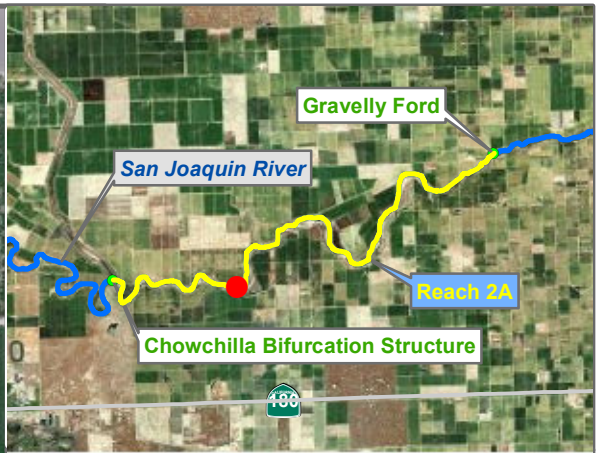
Influences:
 SJR

* = assumed value
 bgs = below ground surface
 NR = not recorded

Last Updated:
 5/23/2012
 Preliminary Data



Monitoring Location T10-1 (3m)



Reach = 2A
 River Mile = 219.8
 X = -120.2376 Y = 36.7700
 (Horizontal Datum is NAD83)
 Distance From River (ft) = 145
 Reference Elevation (ft NAVD88) = 171.44
 Site = Transect 10
 Land Use = River Channel
 Protocol Reference = ATR App F Sec 2
 Agency = USBR

Madera County
 Right Bank
 Status = Existing

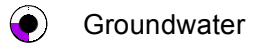
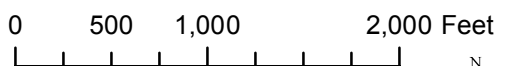
- Measurements:
1. Type = Electronic Sounder Measurement
Interval = Monthly
Date Range = 4/18/2008 - 4/20/2010
 2. Type =
Interval =
Date Range =
 3. Type =
Interval =
Date Range =

Description:
 2 inch PVC casing, in channel, no threshold

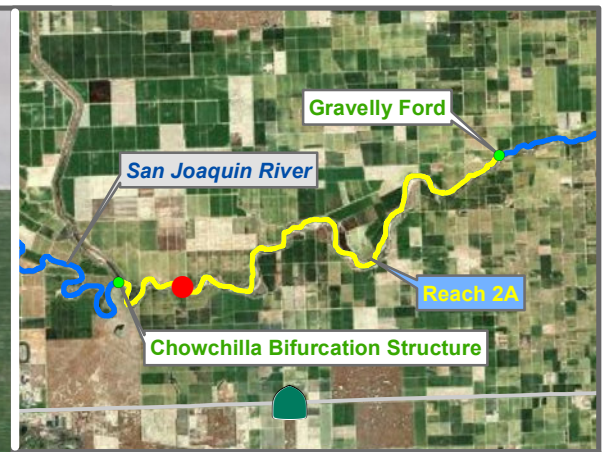
Root Depth (ft bgs) = 4.0
 GS Buffer (ft) =
 Screen Depth (ft bgs) =
 Capillary Rise (ft) =
 Historical GW level (ft bgs) = 50
 Field Threshold (ft bgs) = 4
 Threshold Elevation (ft NAVD88) = 167.4

Influences:
 SJR

Last Updated:
 5/23/2012
 Preliminary Data



Monitoring Location T10-2



Reach = 2A
 River Mile = 218.2
 X = -120.2607 Y = 36.7712
 (Horizontal Datum is NAD83)
 Distance From River (ft) = 294
 Reference Elevation (ft NAVD88) = 163.65
 Site = Transect 12
 Land Use = River Channel
 Protocol Reference = ATR App F Sec 2
 Agency = USBR
 Measurements:
 1. Type = Electronic Sounder Measurement
 Interval = Monthly
 Date Range = 4/16/2008 - 8/10/2011
 2. Type =
 Interval =
 Date Range =
 3. Type =
 Interval =
 Date Range =

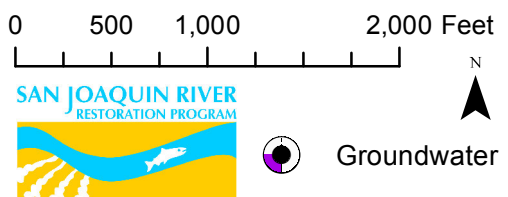
Description:
 2 inch steel casing, in channel, no threshold

 Root Depth (ft bgs) = 4.0
 GS Buffer (ft) =
 Screen Depth (ft bgs) =
 Capillary Rise (ft) =
 Historical GW level (ft bgs) = 50
 Field Threshold (ft bgs) = 4
 Threshold Elevation (ft NAVD88) = 159.7

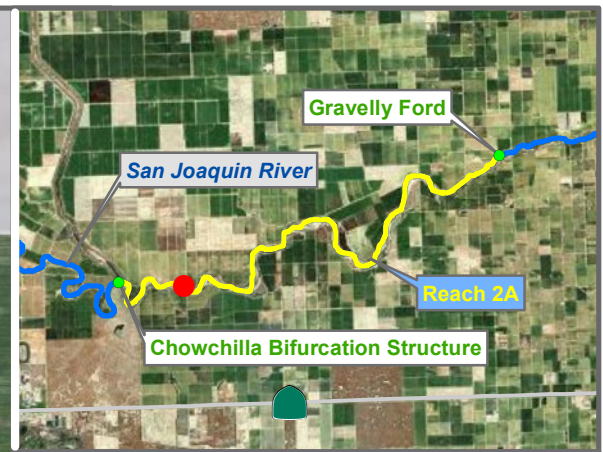
Influences:
 SJR

 Last Updated:
 5/23/2012
 Preliminary Data

 * = assumed value
 bgs = below ground surface
 NR = not recorded



Monitoring Location T12-1



Reach = 2A
 River Mile = 218.2
 X = -120.2603 Y = 36.7716
 (Horizontal Datum is NAD83)
 Distance From River (ft) = 118
 Reference Elevation (ft NAVD88) = 166.8
 Site = Transect 12
 Land Use = River Channel
 Protocol Reference = ATR App F Sec 2
 Agency = USBR

Fresno County
 Left Bank
 Status = Existing

- Measurements:
1. Type = Electronic Sounder Measurement
Interval = Monthly
Date Range = 5/16/2008 - 10/19/2010
 2. Type =
Interval =
Date Range =
 3. Type =
Interval =
Date Range =

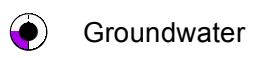
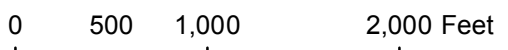
Description:
 2 inch PVC casing, in channel, no threshold

Root Depth (ft bgs) = 4.0
 GS Buffer (ft) =
 Screen Depth (ft bgs) =
 Capillary Rise (ft) =
 Historical GW level (ft bgs) = 50
 Field Threshold (ft bgs) = 4
 Threshold Elevation (ft NAVD88) = 162.8

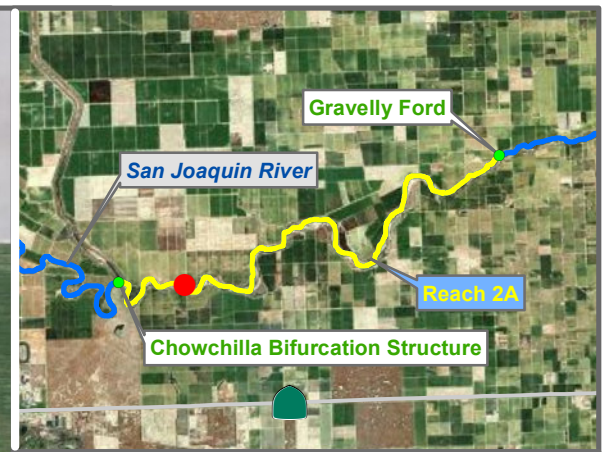
Influences:
 SJR

* = assumed value
 bgs = below ground surface
 NR = not recorded

Last Updated:
 5/23/2012
 Preliminary Data



Monitoring Location T12-2



Reach = 2A
 River Mile = 218.2
 X = -120.2601 Y = 36.7718
 (Horizontal Datum is NAD83)
 Distance From River (ft) = 29
 Reference Elevation (ft NAVD88) = 163.98
 Site = Transect 12
 Land Use = River Channel
 Protocol Reference = ATR App F Sec 2
 Agency = USBR
 Measurements:
 1. Type = Electronic Sounder Measurement
 Interval = Monthly
 Date Range = 4/16/2008 - 10/19/2010
 2. Type =
 Interval =
 Date Range =
 3. Type =
 Interval =
 Date Range =
 Description:
 2 inch steel casing, in channel, no threshold

Root Depth (ft bgs) = 4.0
 GS Buffer (ft) =
 Screen Depth (ft bgs) =
 Capillary Rise (ft) =
 Historical GW level (ft bgs) = 50
 Field Threshold (ft bgs) = 4
 Threshold Elevation (ft NAVD88) = 160.0

Influences:
 SJR

* = assumed value
 bgs = below ground surface
 NR = not recorded

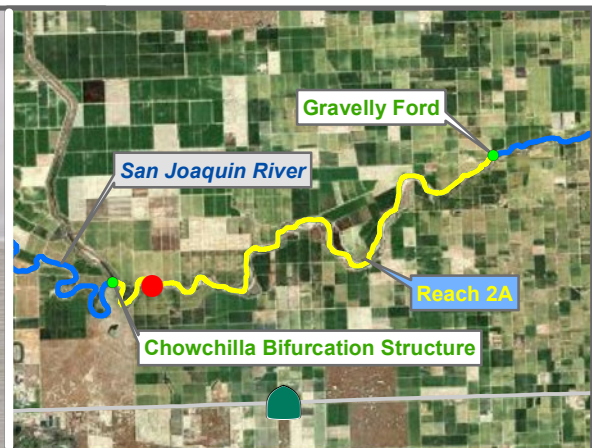
Last Updated:
 5/23/2012
 Preliminary Data

0 500 1,000 2,000 Feet



Groundwater

Monitoring Location T12-3



Reach = 2A
 River Mile = 217.2
 X = -120.2701 Y = 36.7717
 (Horizontal Datum is NAD83)
 Distance From River (ft) = 48
 Reference Elevation (ft NAVD88) =
 Site = Transect 13
 Land Use = River Channel
 Protocol Reference = ATR App F Sec 2
 Agency = USBR

Madera County
 Right Bank
 Status = Existing

- Measurements:
1. Type = Electronic Sounder Measurement
Interval = Monthly
Date Range = 4/18/2008 - 9/17/2008
 2. Type =
Interval =
Date Range =
 3. Type =
Interval =
Date Range =

Description:
 2 inch PVC casing, in channel, no threshold

Root Depth (ft bgs) = 4.0
 GS Buffer (ft) =
 Screen Depth (ft bgs) =
 Capillary Rise (ft) =
 Historical GW level (ft bgs) = 50
 Field Threshold (ft bgs) = 4
 Threshold Elevation (ft NAVD88) = TBD

Influences:
 SJR

* = assumed value
 bgs = below ground surface
 NR = not recorded

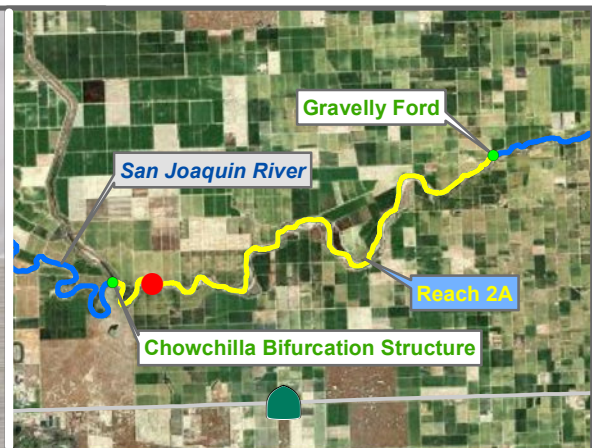
Last Updated:
 5/23/2012
 Preliminary Data

0 500 1,000 2,000 Feet



Groundwater

Monitoring Location T13-2



Reach = 2A
 River Mile = 217.2
 X = -120.2700 Y = 36.7722
 (Horizontal Datum is NAD83)
 Distance From River (ft) = 220
 Reference Elevation (ft NAVD88) = 169.11
 Site = Transect 13
 Land Use = River Channel
 Protocol Reference = ATR App F Sec 2
 Agency = USBR

Madera County
 Right Bank
 Status = Existing

Measurements:

1. Type = Electronic Sounder Measurement
Interval = Monthly
Date Range = 5/30/2008 - 1/3/2012
2. Type =
Interval =
Date Range =
3. Type =
Interval =
Date Range =

Description:

2 inch PVC casing, in channel, no threshold

Root Depth (ft bgs) = 4.0
 GS Buffer (ft) =
 Screen Depth (ft bgs) =
 Capillary Rise (ft) =
 Historical GW level (ft bgs) = 50
 Field Threshold (ft bgs) = 4
 Threshold Elevation (ft NAVD88) = 165.1

Influences:
 SJR

* = assumed value
 bgs = below ground surface
 NR = not recorded

Last Updated:
 5/23/2012
 Preliminary Data

0 500 1,000 2,000 Feet



 Groundwater

Monitoring Location T13-3