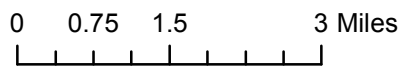


RECLAMATION
Managing Water in the West

Overview GW Monitoring Locations

Preliminary Data





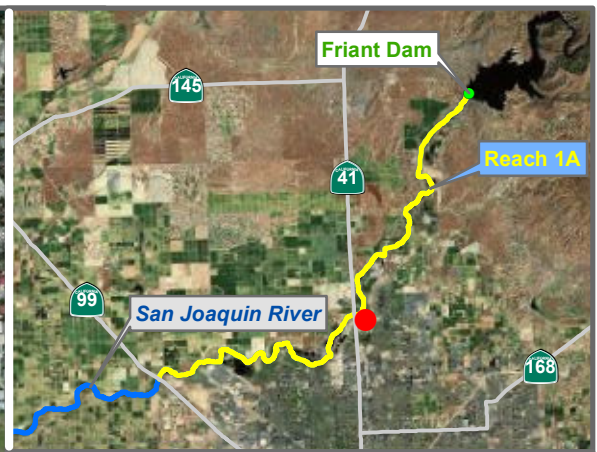
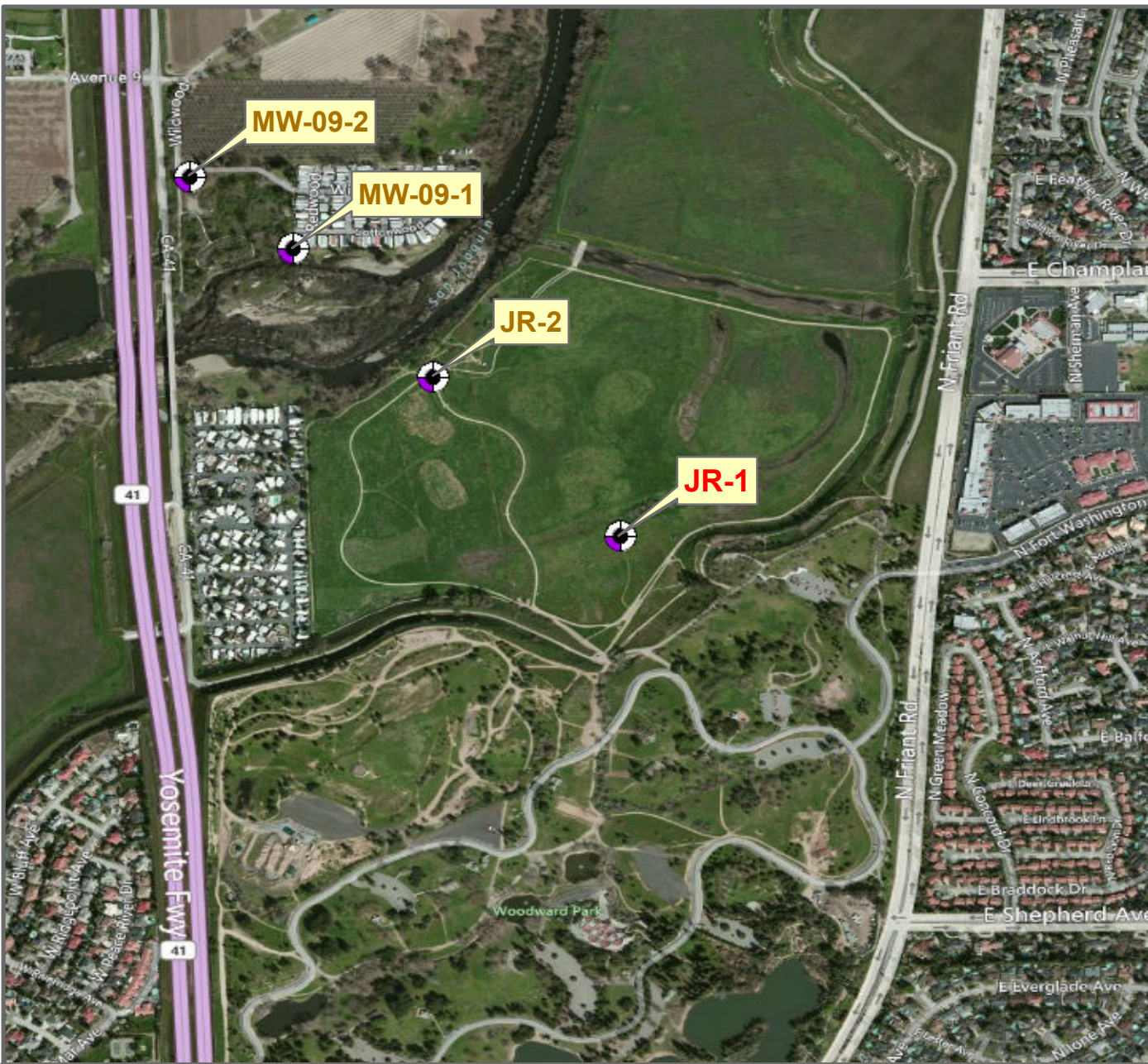
RECLAMATION
Managing Water in the West

Reach 1A GW Monitoring Locations



Preliminary Data

Last Updated: 5/29/2012



Reach = 1A
 River Mile = 255.7
 X = -119.7843 Y = 36.8730
 (Horizontal Datum is NAD83)
 Distance From River (ft) = 1669
 Reference Elevation (ft NAVD88) =
 Site = Hwy-41 Jensen Ranch
 Land Use = Public Land
 Protocol Reference = ATR App F Sec 2
 Agency = USBR

Fresno County
 Left Bank
 Status = Existing

Measurements:

1. Type = Electronic Sounder Measurement
Interval = Monthly
Date Range = 7/14/2008 - 12/29/2011
2. Type =
Interval =
Date Range =
3. Type =
Interval =
Date Range =

Description:
 2 inch PVC well

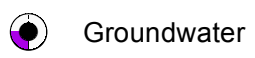
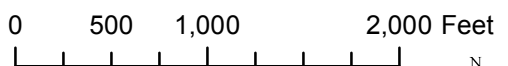
Root Depth (ft bgs) = 4.0
 GS Buffer (ft) = 0.0*
 Screen Depth (ft bgs) = 37.5
 Capillary Rise (ft) = 1.0
 Historical GW level (ft bgs) = 50
 Field Threshold (ft bgs) = 5
 Threshold Elevation (ft NAVD88) = TBD

Influences:

-

Last Updated:
 5/23/2012
 Preliminary Data

* = assumed value
 bgs = below ground surface
 NR = not recorded



Groundwater

Monitoring Location

JR-1



Reach = 1A
 River Mile = 255.7
 X = -119.7875 Y = 36.8758
 (Horizontal Datum is NAD83)
 Distance From River (ft) = 317
 Reference Elevation (ft NAVD88) =
 Site = Hwy-41 Jensen Ranch
 Land Use = Public Land
 Protocol Reference = ATR App F Sec 2
 Agency = USBR
 Measurements:
 1. Type = Electronic Sounder Measurement
 Interval = Monthly
 Date Range = 7/14/2008 - 12/29/2011
 2. Type =
 Interval =
 Date Range =
 3. Type =
 Interval =
 Date Range =

Description:
 2 inch PVC well

Root Depth (ft bgs) = 4.0
 GS Buffer (ft) = 0.0*
 Screen Depth (ft bgs) = 37.5
 Capillary Rise (ft) = 1.0
 Historical GW level (ft bgs) = 50
 Field Threshold (ft bgs) = 5
 Threshold Elevation (ft NAVD88) = TBD

Influences:
 SJR

Last Updated:
 5/23/2012
 Preliminary Data

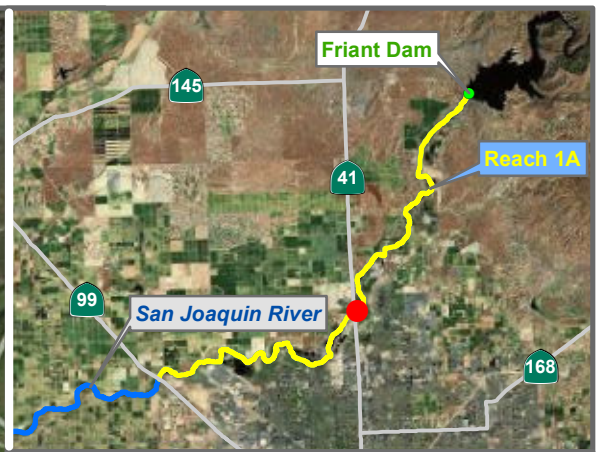
* = assumed value
 bgs = below ground surface
 NR = not recorded

0 500 1,000 2,000 Feet



Groundwater

Monitoring Location JR-2



Reach = 1A
 River Mile = 255.7
 X = -119.7899 Y = 36.8780
 (Horizontal Datum is NAD83)
 Distance From River (ft)= 724
 Reference Elevation (ft NAVD88) = 270.7
 Site = Hwy-41 Wildwood Pk.
 Land Use = Public Land
 Protocol Reference = ATR App F Sec 2
 Agency = USBR

Madera County
 Right Bank
 Status = Existing

Measurements:

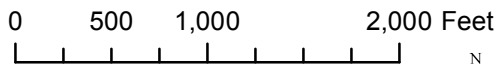
1. Type = Electronic Sounder Measurement
Interval = Monthly
Date Range = 10/27/2009 - 8/26/2011
2. Type =
Interval =
Date Range =
3. Type =
Interval =
Date Range =

Description:

2 inch PVC well FM

Root Depth (ft bgs) = 4.0
 GS Buffer (ft) = 0.0*
 Screen Depth (ft bgs) = 17.0 - 37.0
 Capillary Rise (ft) = 0.5
 Historical GW level (ft bgs) = 50
 Field Threshold (ft bgs) = 4.5
 Threshold Elevation (ft NAVD88) = 266.2

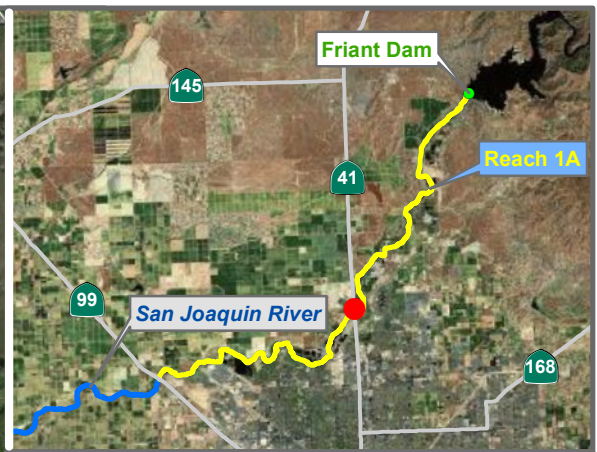
Influences:
 SJR



Groundwater

Monitoring Location MW-09-1

* = assumed value
 bgs = below ground surface
 NR = not recorded



Reach = 1A
 River Mile = 255.7
 X = -119.7917 Y = 36.8792
 (Horizontal Datum is NAD83)
 Distance From River (ft)= 1068
 Reference Elevation (ft NAVD88) = 270.2
 Site = Hwy-41 Wildwood Pk.
 Land Use = Public Land
 Protocol Reference = ATR App F Sec 2
 Agency = USBR

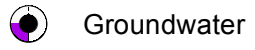
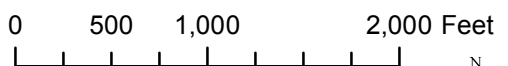
Measurements:
 1. Type = Electronic Sounder Measurement
 Interval = Monthly
 Date Range = 7/14/2008 - 8/19/2011
 2. Type =
 Interval =
 Date Range =
 3. Type =
 Interval =
 Date Range =

Description:
 2 inch PVC well FM

Root Depth (ft bgs) = 4.0
 GS Buffer (ft) = 0.0*
 Screen Depth (ft bgs) = 8.0 - 28.0
 Capillary Rise (ft) = 0.5
 Historical GW level (ft bgs) = 50
 Field Threshold (ft bgs) = 4.5
 Threshold Elevation (ft NAVD88) = 265.7

Influences:
-

* = assumed value
 bgs = below ground surface
 NR = not recorded
 Last Updated:
 5/23/2012
 Preliminary Data



Monitoring Location MW-09-2