



Monitoring Wells Installed in 2012 January 7, 2013

The State Water Resources Control Board (State Board) issued a Order Approving Temporary Urgent Change and Instream Flow Dedication (Order) dated October 1, 2012, that allowed the San Joaquin River Restoration Program (SJRRP) to release Interim Flows until a long-term Order is approved. Condition 9 in the Order requires Reclamation to "... publish ... well locations, monitoring/buffer groundwater thresholds, and proposed process for development of and updates to action thresholds on the SJRRP website by January 10, 2013 for public review and comment" The Order also requires Reclamation to post the plans and timelines for installation of any new monitoring wells.

Reclamation installed 35 wells in 2012. Table 1 below shows well coordinates and Figure 1 shows well locations.

Table 1: Monitoring Wells Installed in 2012

Temporary Well ID	Reach	Latitude (NAD 83)	Longitude (NAD 83)
PZ-12-R2B-3	2B	36.766041	-120.295869
PZ-12-R2B-4	2B	36.771531	-120.295676
PZ-12-R2B-5	2B	36.769567	-120.300729
PZ-12-R2B-6	2B	36.766005	-120.300854
PZ-12-R4A-1	4A	37.088344	-120.578644
PZ-12-R3-8	3	36.836702	-120.404353
PZ-12-R3-9	3	36.824269	-120.402002
PZ-12-R3-10	3	36.828398	-120.398783
PZ-12-R3-11	3	36.824859	-120.389615
PZ-12-R3-12	3	36.839546	-120.415659
PZ-12-R3-13	3	36.836449	-120.416955
PZ-12-R3-14	3	36.843175	-120.427578
PZ-12-R3-15	3	36.845350	-120.423022
PZ-12-R3-16	3	36.967876	-120.497490
PZ-12-R3-17	3	36.974339	-120.501956
PZ-12-R3-18	3	36.974610	-120.494545
PZ-12-R3-19	3	36.981588	-120.500396
PZ-12-R4A-2	4A	37.077281	-120.564387
PZ-12-R4A-3	4A	37.112984	-120.586475
PZ-12-R4A-4	4A	37.113011	-120.565103
PZ-12-R4A-5	4A	37.107435	-120.562249
PZ-12-R4A-6	4A	37.107043	-120.575195
PZ-12-R4A-7	4A	37.106613	-120.586073
PZ-12-R4A-8	4A	37.071520	-120.556212
PZ-12-R4B-1	4B	37.171360	-120.650279
PZ-12-R4B-2	4B	37.157333	-120.659191
PZ-12-R4B-3	4B	37.142419	-120.601511

Temporary Well ID	Reach	Latitude (NAD 83)	Longitude (NAD 83)
PZ-12-R4B-4	4B	37.149431	-120.568238
PZ-12-R4B-5	4B	37.136681	-120.568151
PZ-12-R4B-6	4B	37.136838	-120.584611
PZ-12-R4B-7	4B	37.128118	-120.581094
PZ-12-R1B-1	1B	36.809902	-120.132769
PZ-12-R1B-2	1B	36.809767	-120.135004
PZ-12-R2B-7	2B	36.769733	-120.293249
PZ-12-R2B-8	2B	36.769565	-120.292583

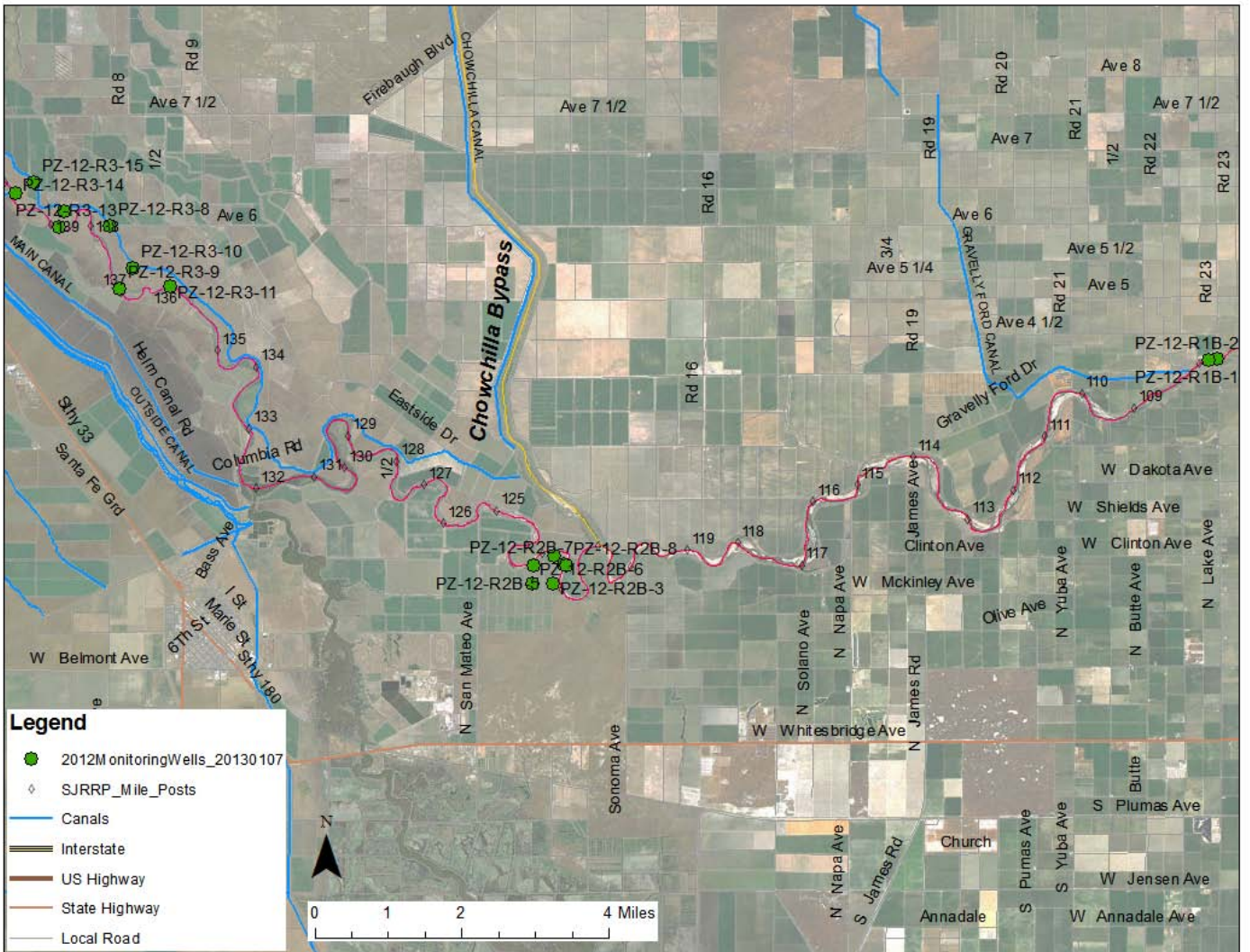


Figure 1: Reach 2 and 3 Monitoring Wells installed in 2012

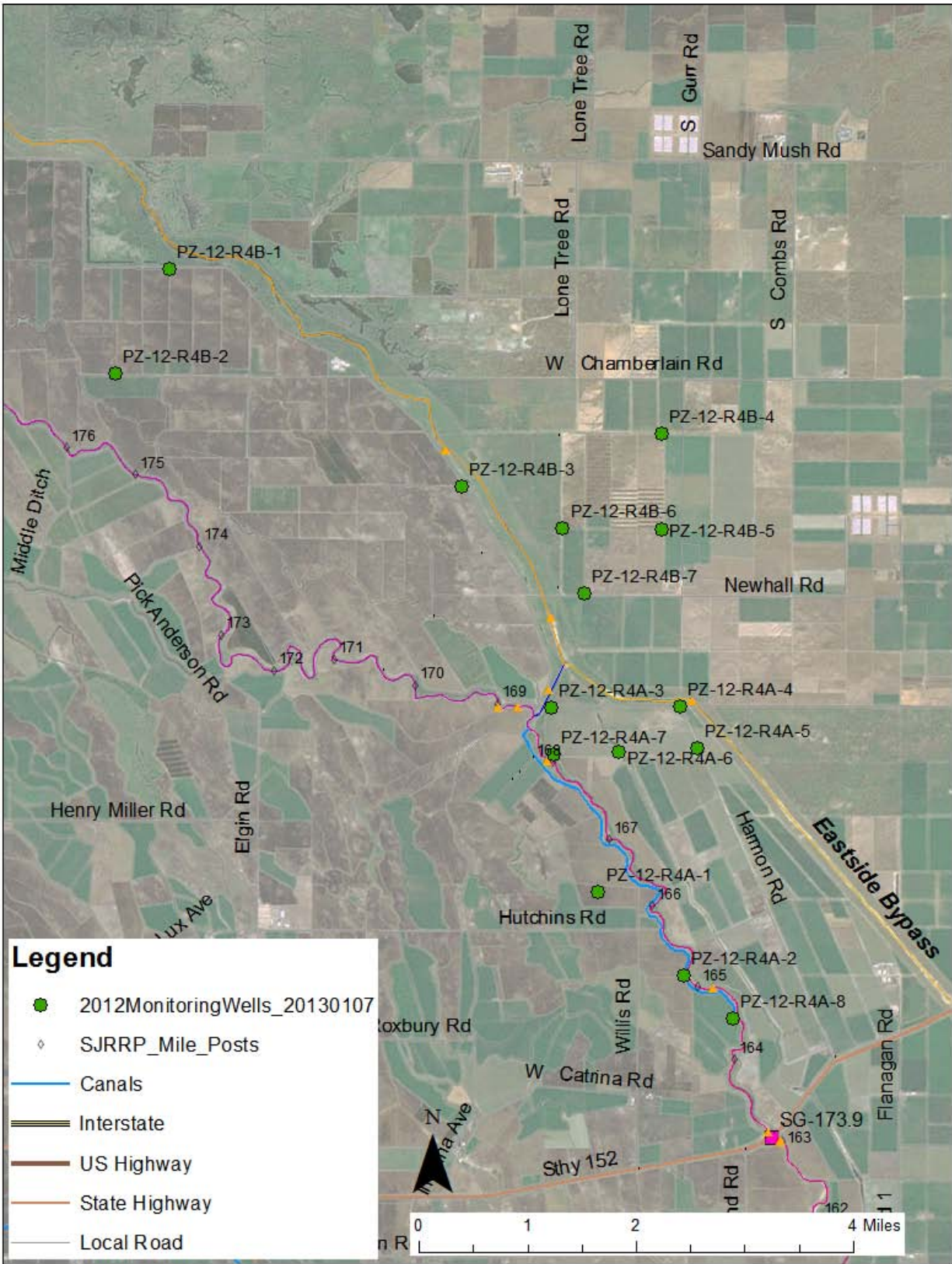


Figure 2: Reach 4 Monitoring Wells Installed in 2012

**SEEPAGE HOTLINE NUMBER!
 CALL US AT 916-978-4398 IF YOU SEE OR ANTICIAPTE SEEPAGE PROBLEMS.**