

SAN JOAQUIN RIVER  
RESTORATION PROGRAM



# Water Management Technical Feedback Meeting

November 6, 2009  
Visalia, CA


SAN JOAQUIN RIVER  
RESTORATION PROGRAM



## Agenda Overview



---

- Comments on Meeting Notes
- Status Update on Water Management Activities
- Interim Flow Water Right Petition / Recapture
- Part III Guidelines
- MC/FKC Capacity Correction / Reverse Flow Update
- Public Comment
- Agenda for Next Meeting




---


**Comments on Meeting Notes**



---


**Status Update on  
Water Management Activities**



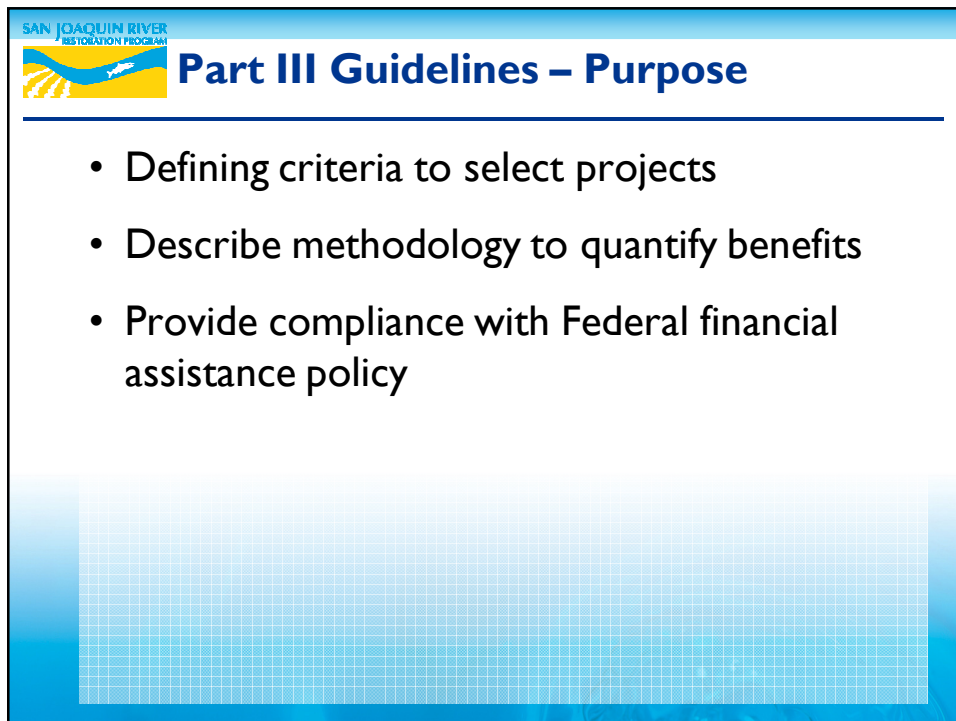
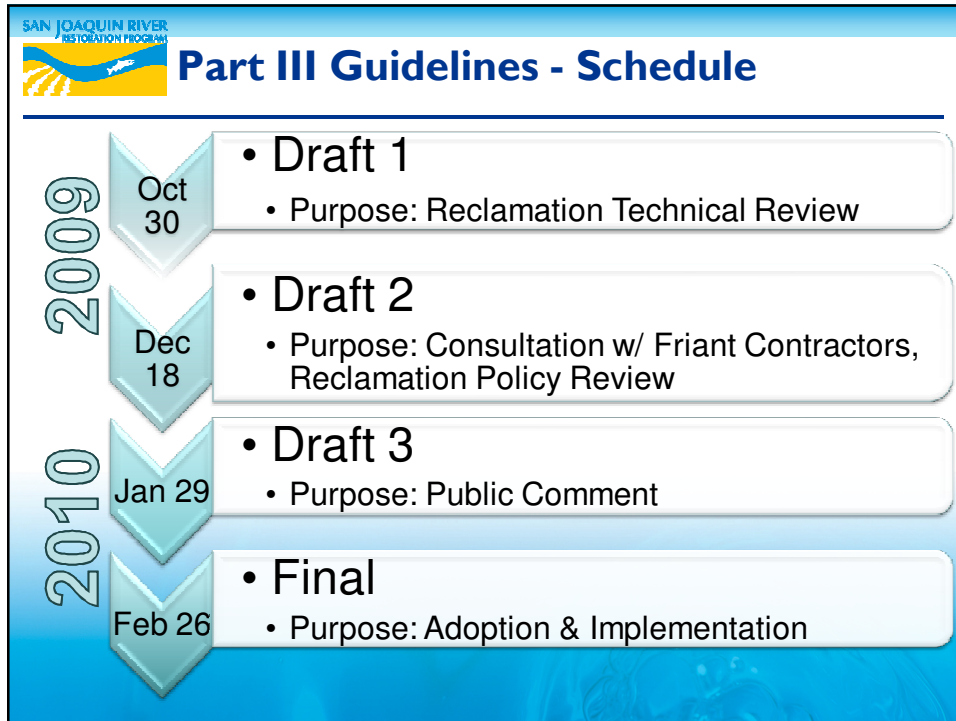



## Water Management Activities

- Restoration Flow Guidelines
- I6(a) Recapture & Recirculation
- I6(b) & Recovered Water Account
- Part III Guidelines
- Interim Flow Water Rights Petition
- Madera/Friant-Kern Canal Capacity Correction
- Friant-Kern Canal Pump-Back Facilities
- Water Transfers



## Part III Guidelines






## Part III Guidelines – DRAFT I Components

---


- **Planning Report:**
  - Description of Project Alternatives
  - Selection Criteria
  - Economic Analysis
  - Cost-Share / RWA Reduction Determination
  - Environmental / Legal Analysis
  - Financial Capability
- **Cost-Share Agreement**
  - Cost-Sharing for Planning Studies / Construction Activities
  - Allocation Schedule and Rules
  - Project Reporting Requirements



## Part III Guidelines – DRAFT I Selection Criteria


---

- **Minimum Project Criteria to determine eligibility**
- **Prioritization Criteria**
  - Cost Effectiveness - \$/af
  - RWA Reduction
  - Regional Benefits
  - Enviro/Legal/Institutional constraints
  - Federal participation
- **Input Required:**
  - Additional Prioritization Criteria
  - Weighting of Prioritization Criteria




## Part III Guidelines – DRAFT I Economic Analysis

- Reclamation will prioritize all projects based on their cost-effectiveness (\$/af)
  - Project Cost / Project Yield
    - Project Cost: Cost Estimate
    - Project Yield: Total yield over life of project
  - Project Yield in excess of the water supply impacts over the life of the project cannot be included in the calculation
- Input Required:
  - Need consistent determination of water supply impacts
  - Need acceptable method for determining yield from recharge and in-lieu projects



## Part III Guidelines – DRAFT I Cost-Share / RWA Determination

- Project Benefit Methodology:
  - Cost-Share Determination
    - Water Supply Impacts / Project Yield
    - Federal cost-share limited to 50%
    - Project cost-share limited to reducing water supply impacts
  - Quantify RWA reductions
    - Water deliveries to Part III funded projects reduce the RWA



**Part III Guidelines – DRAFT I**  
**Cost-Share Agreement**

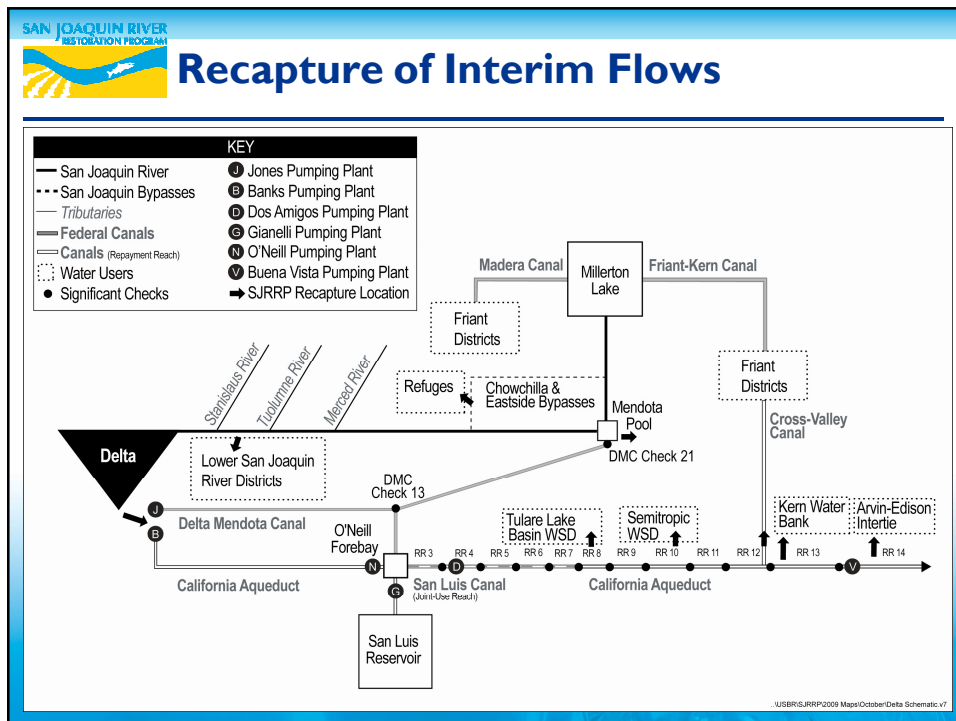
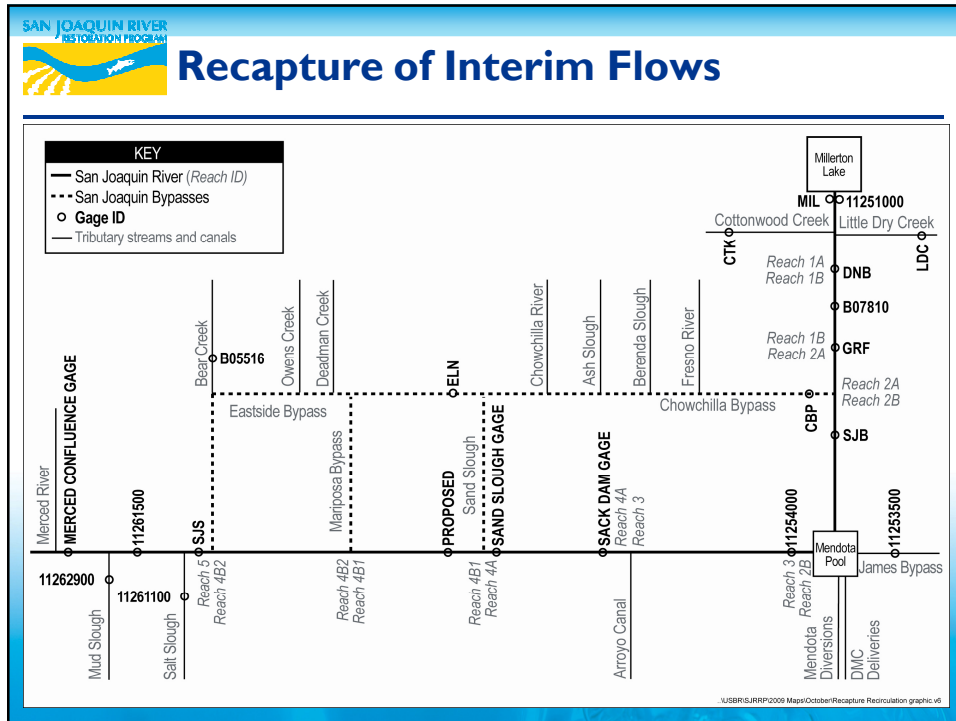
---

- Project Planning Studies
- Project Construction Activities
- Allocation Schedule and Rules
  - 1<sup>st</sup> Round: \$25 million
    - 25% Planning, 75% Construction
  - 2<sup>nd</sup> Round: \$25 million + 1<sup>st</sup> Round remainder
    - 100% Construction
  - 3<sup>rd</sup> Round: Remaining \$
    - 100% Construction



---

**Interim Flow Releases /  
Recapture**








---


## **Madera & Friant-Kern Canals Capacity Correction Assessment and Friant-Kern Canal Reverse Flow Status Update**



### **Capacity Correction Progress**


---

- Model results were presented to FWA and MCWPA on November 2
- FKC Results
  - Effect of subsidence between Mile 81 and Mile 95 may not be fully captured in model
  - FWA provided suggestions on how to better represent canal conditions
  - FWA providing review of structures in model




## Capacity Correction Progress Cont.

- MC Results
  - Datum issues exist at gages
  - Bridges have likely been modified since design drawings were developed
  - MCWPA to provide additional data to improve modeling results
- Final revisions to the FKC and MC models will be discussed on November 10



## Capacity Correction Schedule

- Plan of Study for Feasibility Study – November 20, 2009
- Preliminary Engineering Design Report – April 23, 2010
- Environmental Assessment – April 30, 2010




## Pump-Back Progress

- Kick-off meeting held on October 5
- Model Analysis Strategy Meeting to be held in November to determine plan to complete:
  - Hydraulic Modeling of reverse pump facilities
  - Operations Modeling/Report
  - Optional Tasks: CVC Hydraulic modeling & CalSim modeling



## Public Comment



## Agenda for Next Meeting

- Date & Time:
  - MONDAY, December 7, 2009, 8:30am
- Tentative Agenda:
  - Interim Flows
  - I6(a) Recapture
  - Part III Guidelines
  - MC/FKC Capacity Correction / Reverse Flow Update
  - PEIS/R