



Adult Chinook Salmon Trap and Haul Study

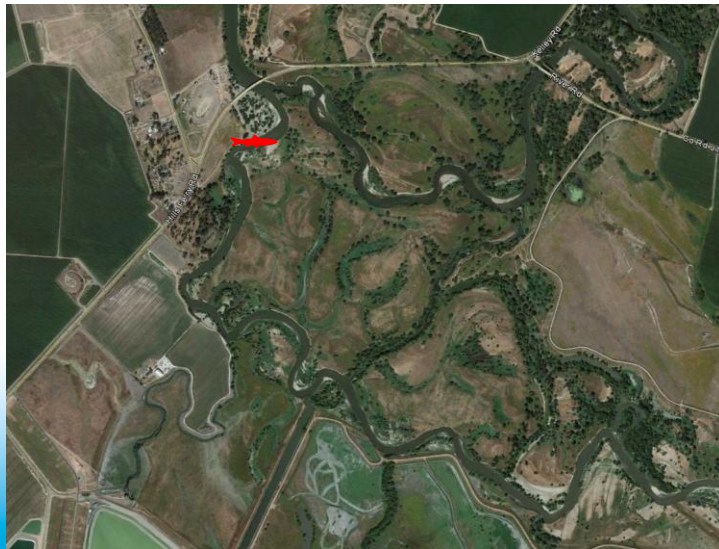


Matt Bigelow

*California Department of Fish & Wildlife
San Joaquin River Restoration*



Adult Chinook Salmon Trapping Locations



San Joaquin River upstream of the Hills Ferry Barrier



Adult Chinook Salmon Trapping Locations

Fyke Net above Hills Ferry Barrier on the San Joaquin River.



Reclamation biologists prepare to transfer salmon to the transport tank.



Adult Chinook Salmon Trapping Locations



San Joaquin River / Bear Creek



Adult Chinook Salmon Trapping Locations



Fyke trapping on the San Joaquin River / Bear Creek at the uppermost wetted location in Reach 5.



Adult Chinook Salmon Trapping Locations



Salt Slough at Wolfsen Road Bridge on the State Wildlife Area



Adult Chinook Salmon Trapping Locations



Fyke trap with wing walls spanning Salt Slough



Adult Chinook Salmon Trapping Locations



Mud Slough on North Grasslands State Wildlife Area



Adult Chinook Salmon Transport



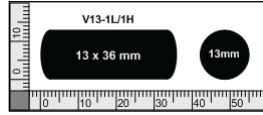
Adult Chinook Salmon





Floy and Acoustic Tagging

Esophageal Insertion of Acoustic Transmitter



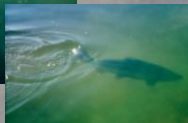
V13 Transmitter



- Floy tag for external identification
- Acoustic transmitter inserted via a modified bovine piller with glycerin lubrication

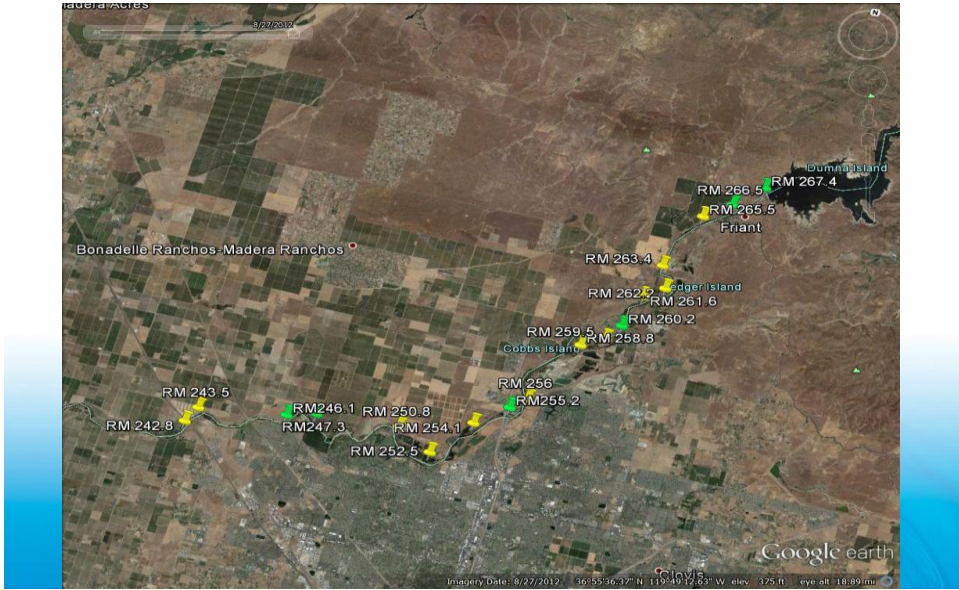


Fish Release at Camp Pashayan





Telemetry Locations

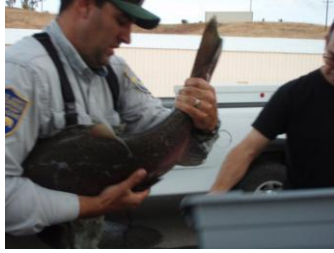


Carcass/Spawning Survey

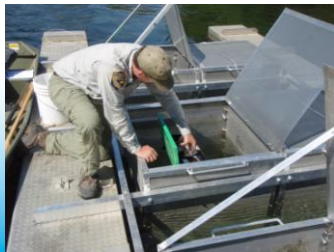




Streamside Spawning



Cage rearing





- Any Questions???

