

Adult Chinook Salmon Trap and Haul Study



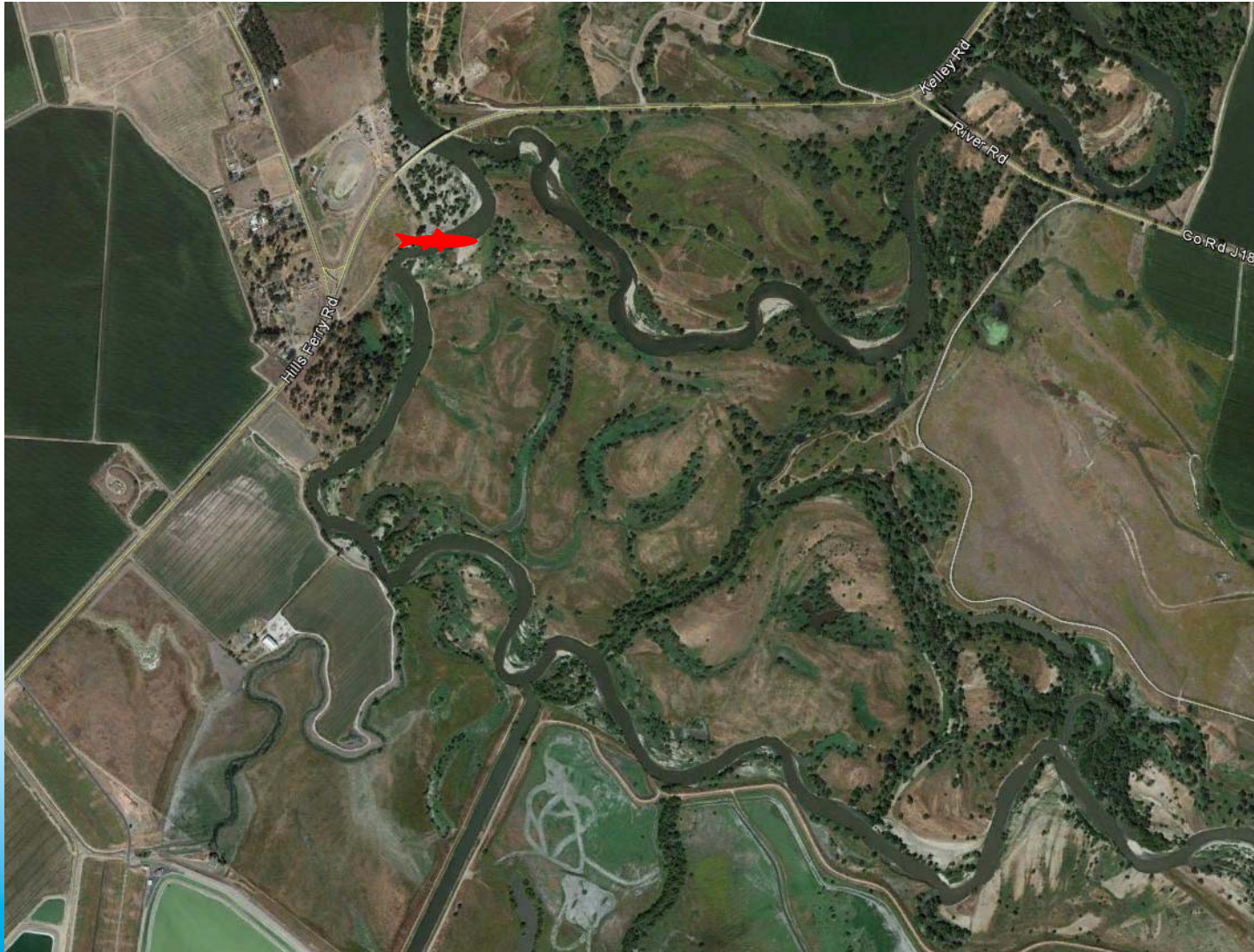
Donald E. Portz

*Bureau of Reclamation
Fisheries & Wildlife Resources Group*

Matt Bigelow

*California Department of Fish & Wildlife
San Joaquin River Restoration*

Adult Chinook Salmon Trapping Locations



San Joaquin River upstream of the Hills Ferry Barrier

Adult Chinook Salmon Trapping Locations

Fyke Net above Hills Ferry Barrier
on the San Joaquin River.



Reclamation biologists prepare to transfer
salmon to the transport tank.

Adult Chinook Salmon Trapping Locations



San Joaquin River / Bear Creek

Adult Chinook Salmon Trapping Locations



Fyke trapping on the San Joaquin River / Bear Creek at the uppermost wetted location in Reach 5.

Adult Chinook Salmon Trapping Locations



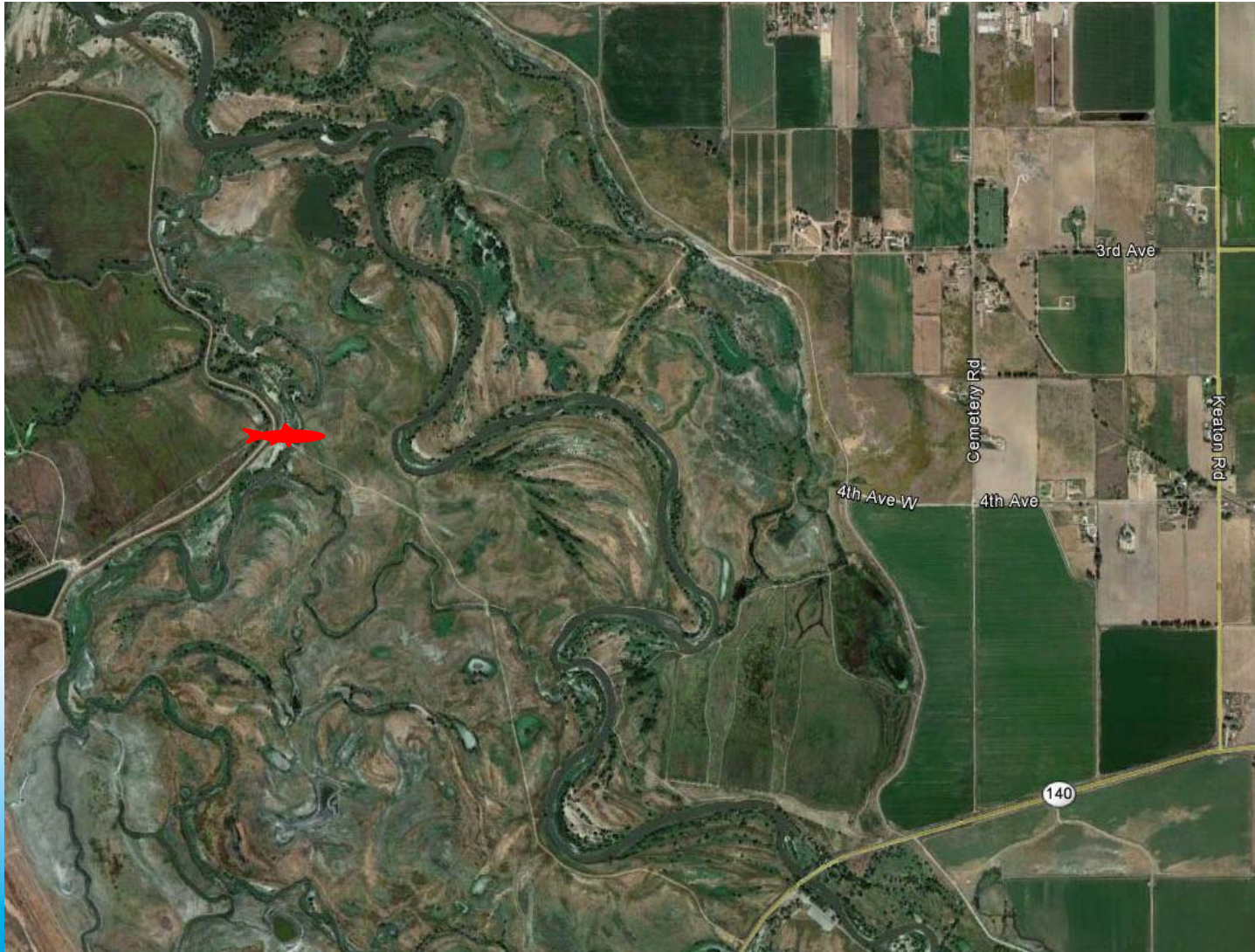
Salt Slough at Wolfsen Road Bridge on the State Wildlife Area

Adult Chinook Salmon Trapping Locations



Fyke trap with wing walls spanning Salt Slough

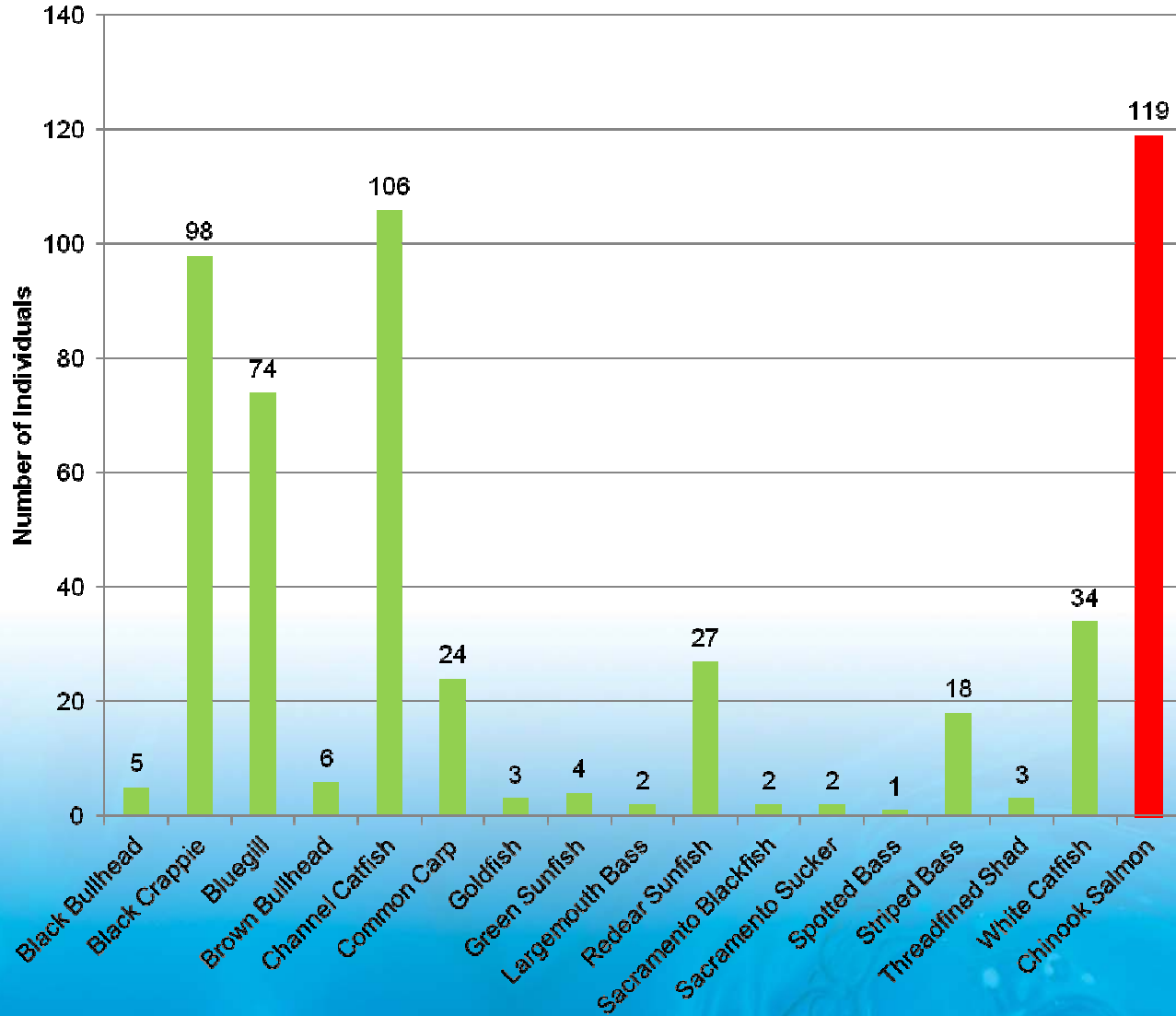
Adult Chinook Salmon Trapping Locations



Mud Slough on North Grasslands State Wildlife Area



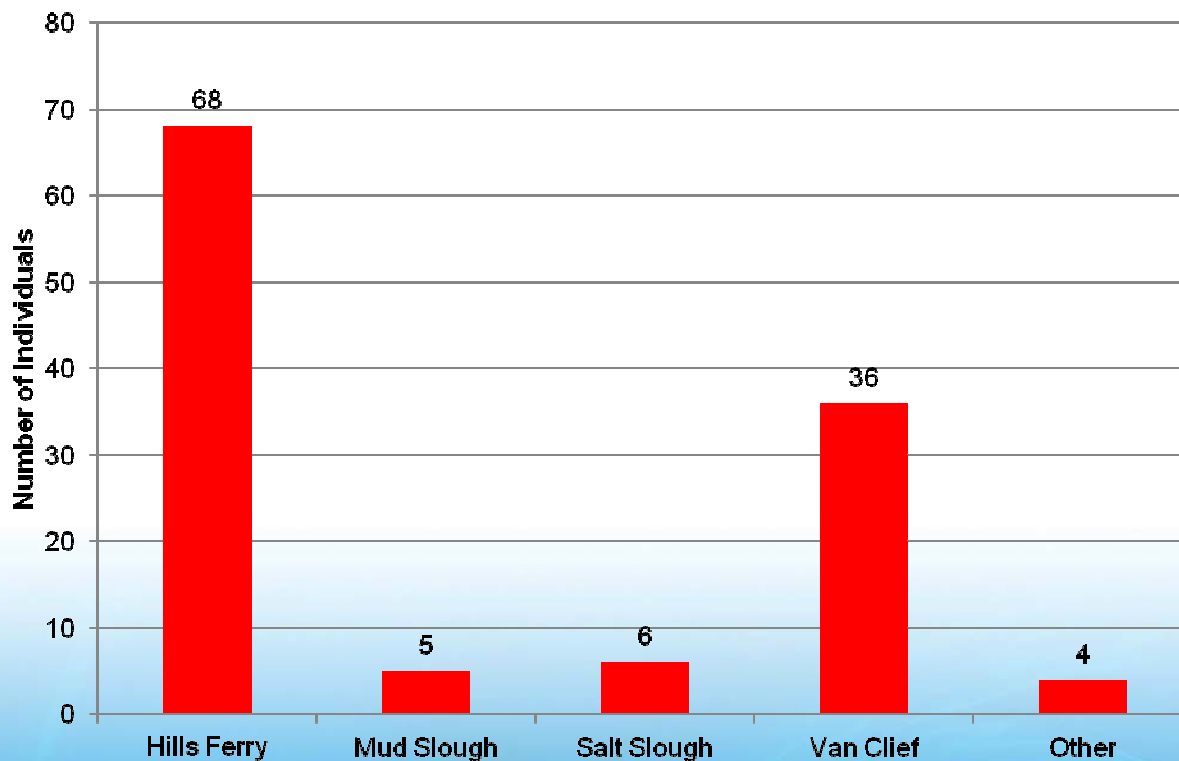
Fish Captured in Fyke Traps





Adult Chinook Salmon Captured

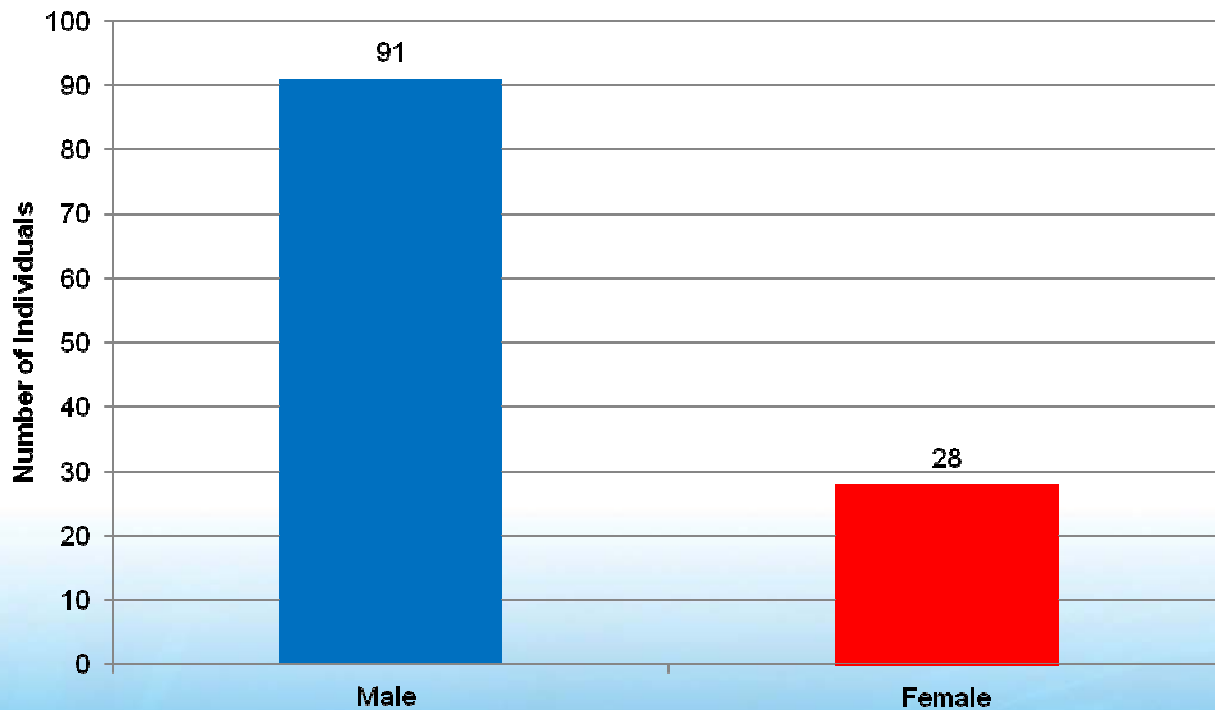
Chinook Salmon by Location





Adult Chinook Salmon Gender Ratio

Chinook Salmon by Gender





Adult Chinook Salmon Transport



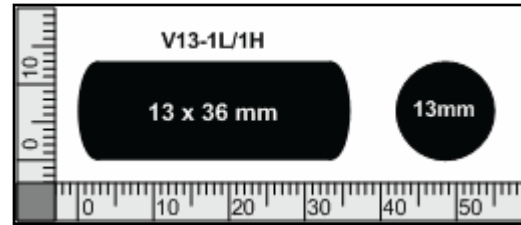


Adult Chinook Salmon





Floy and Acoustic Tagging

Esophageal Insertion of Acoustic Transmitter



V13 Transmitter



-  Floy tag for external identification
-  Acoustic transmitter inserted via a modified bovine piller with glycerin lubrication



Fish Release at Camp Pashayan





Acoustic Telemetry



Manual tracking of an acoustically-tagged Chinook salmon using a VR100 receiver with a VH110 ultrasonic directional hydrophone.



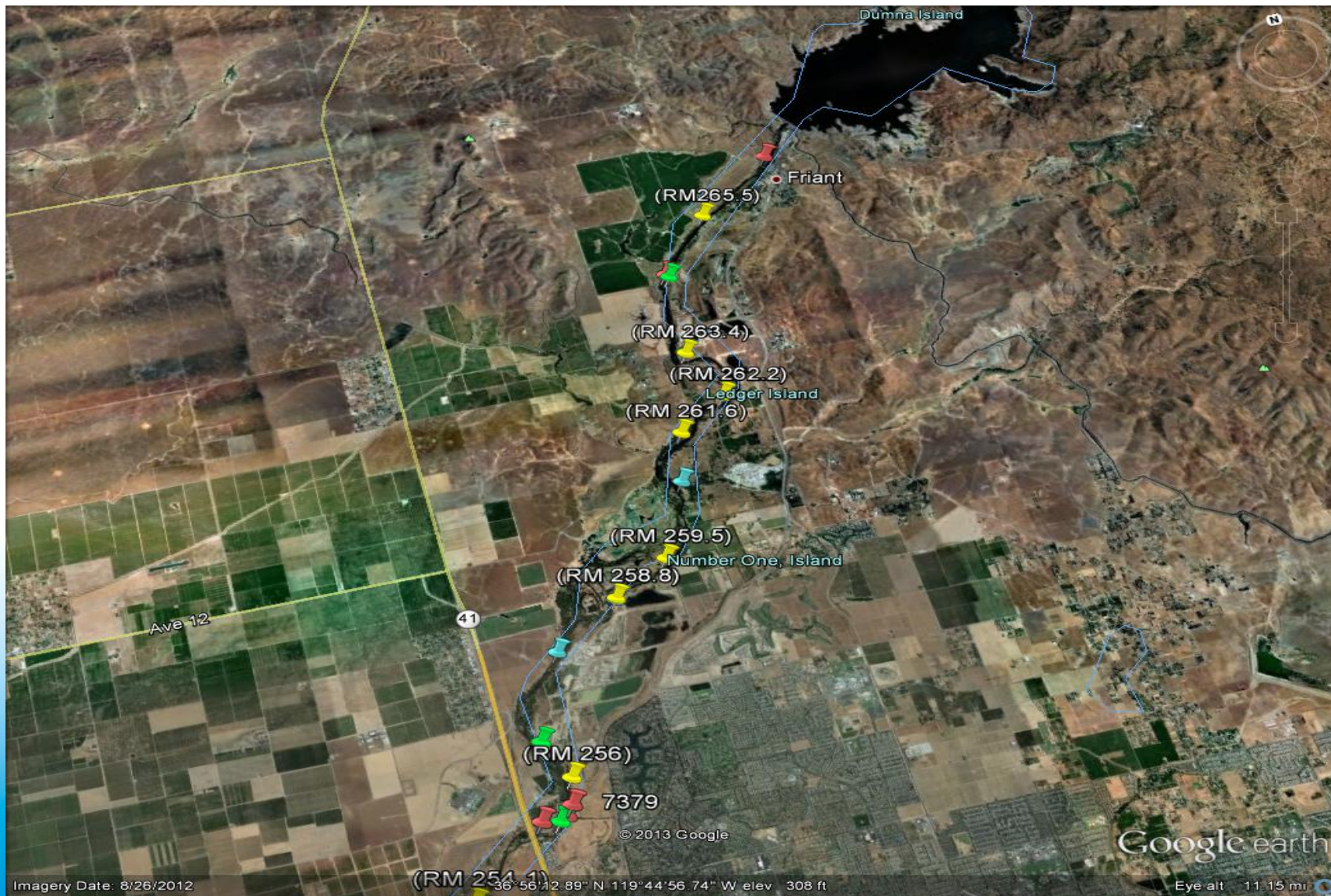
VR2W Single Channel Receiver
(Photo courtesy of Vemco)

Telemetry Locations





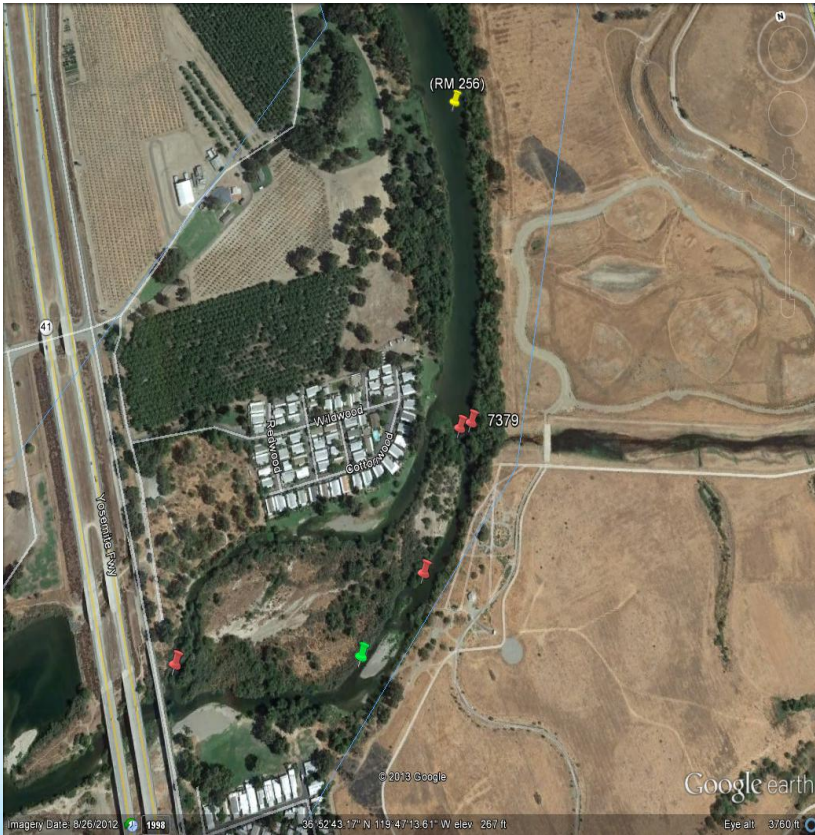
Survey Reach 1



Survey Reach 2



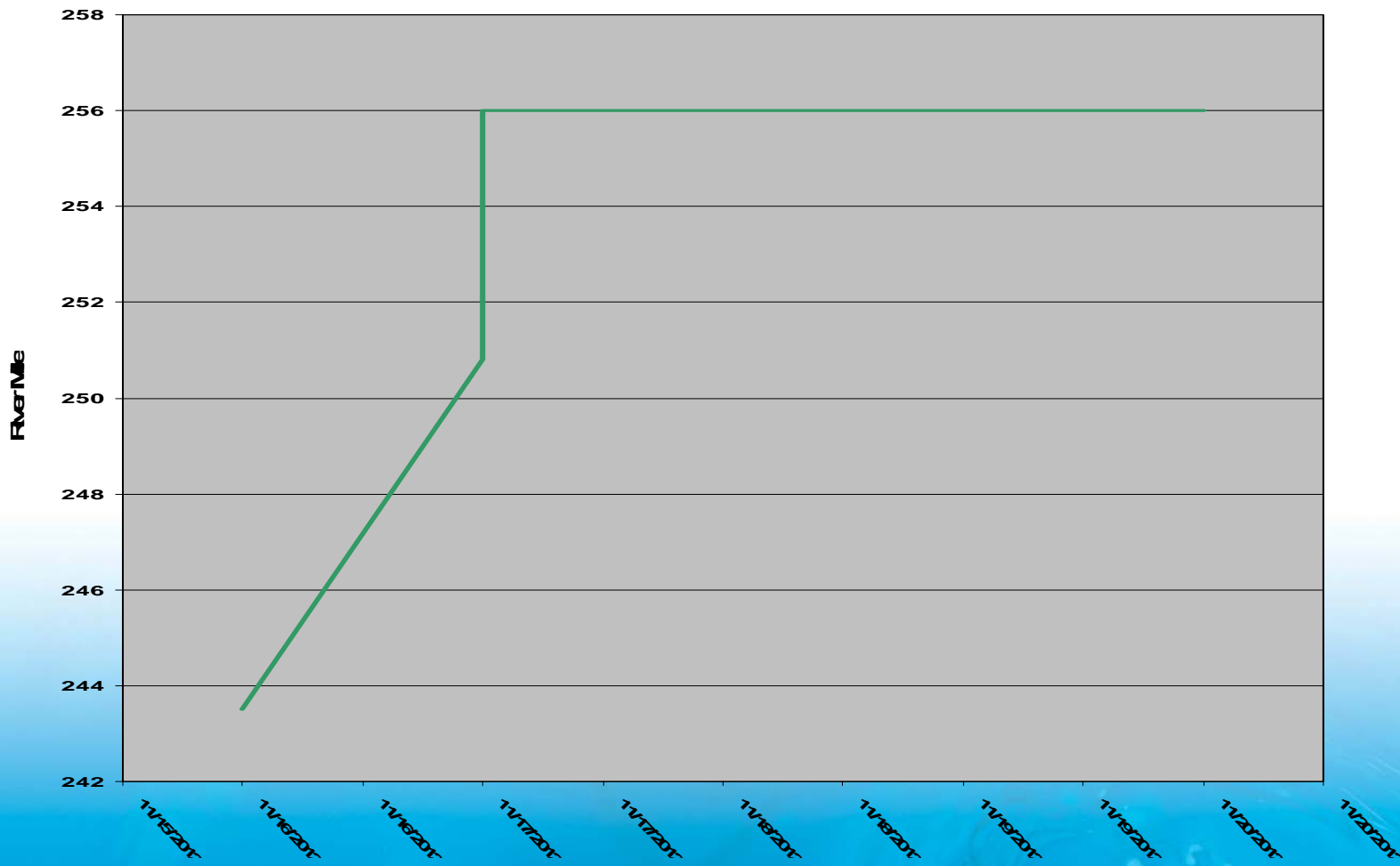
Zoomed view of activity around Highway 41 Bridge



- Picture of redd created by female Chinook 7379

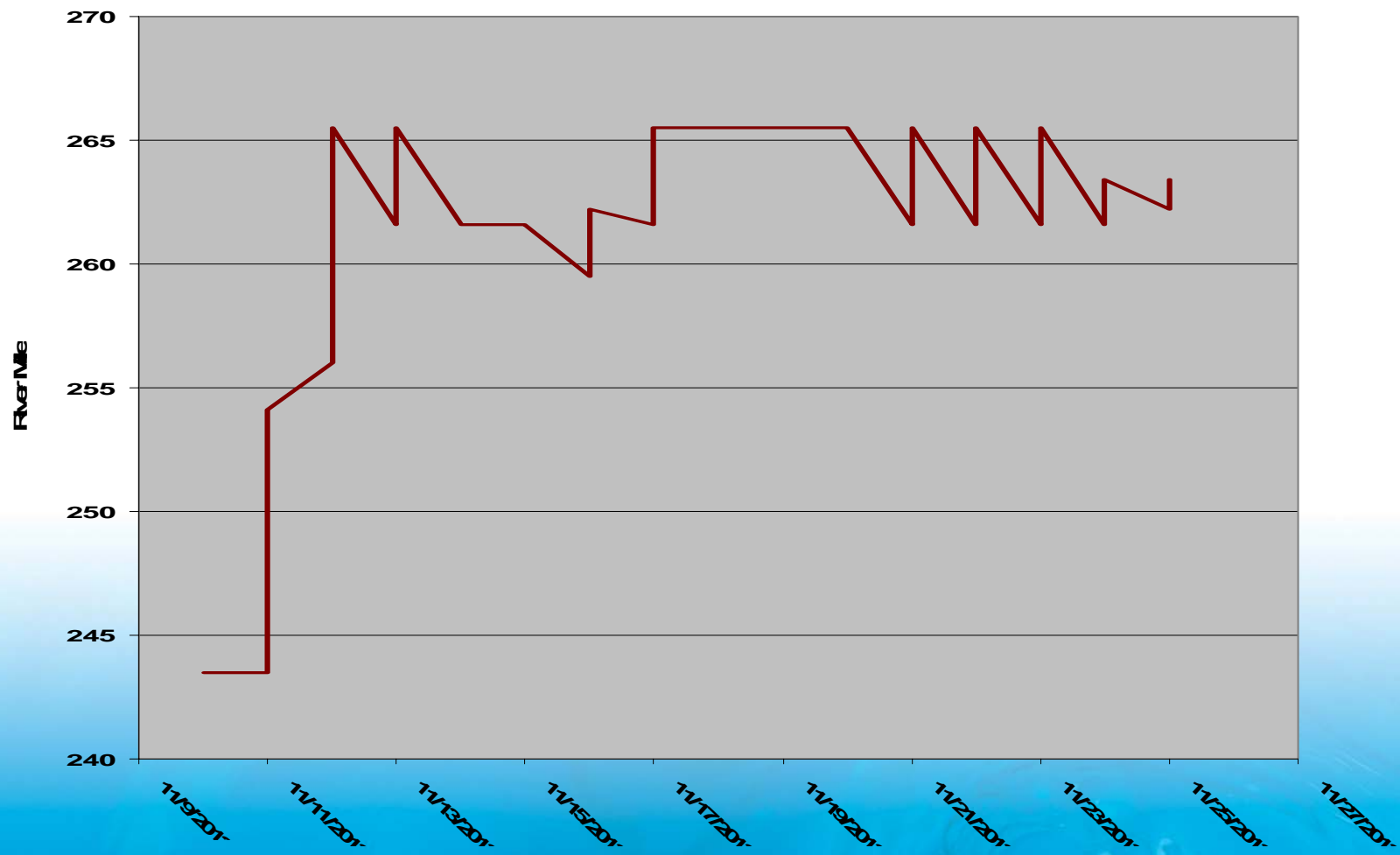
Movement of Female 7379

Movement of Fall-run Chinook Salmon Tag A69-1601-7379 Over Time



Movement of Male 3112

Movement of Fall-Run Chniook Salmon Tag Number A69-1601-3112 Over Time



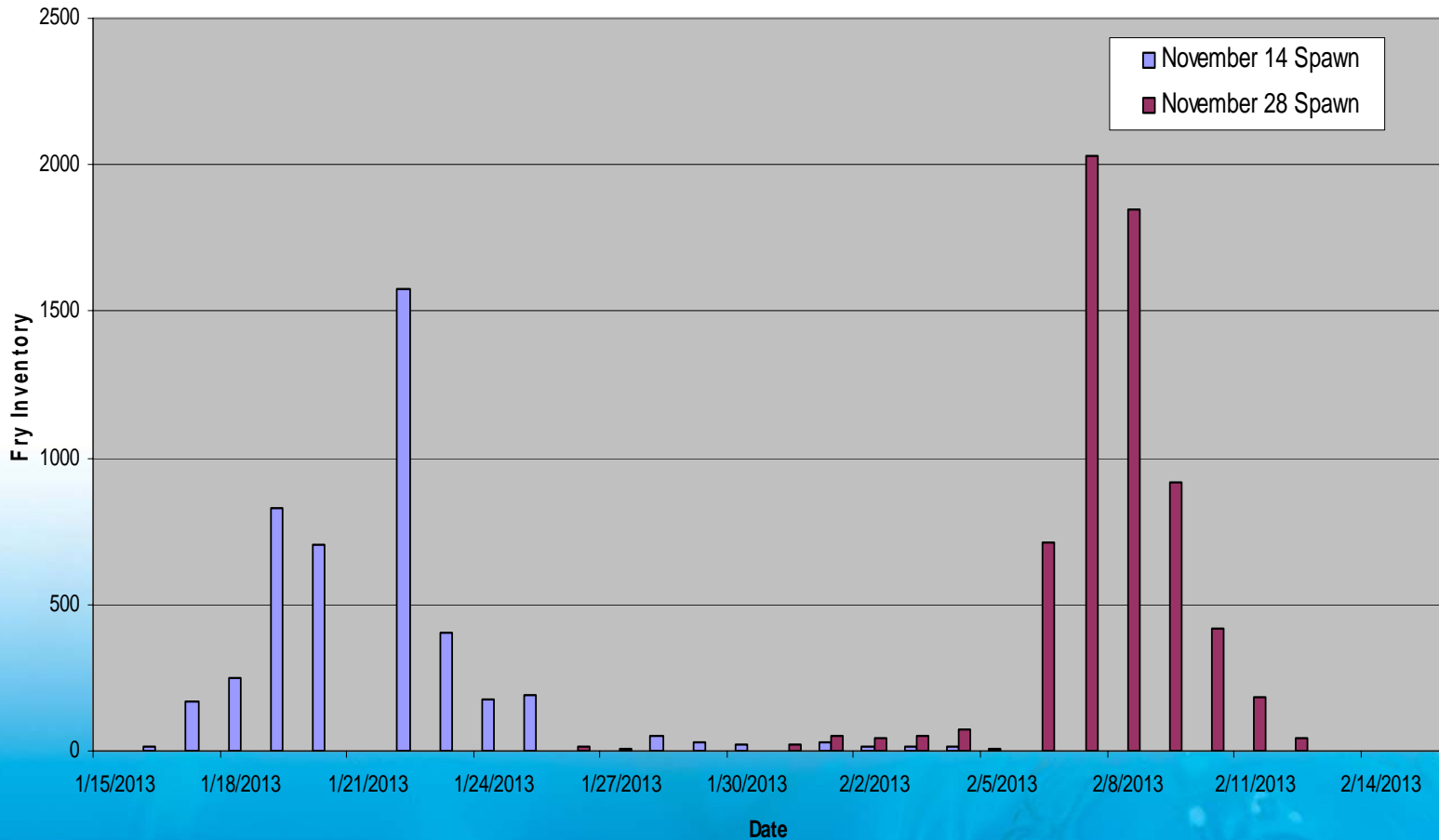


Streamside Spawning



Spawn Emergence Data

Fall-run Chinook Swim-up Emergence Fry Inventory From Two Artificial Redds
(i.e. Deep Matrix Incubars); San Joaquin River Restoration Program



Cage rearing





The End

- Any Questions???