

# San Joaquin River Restoration Program

Fisheries Management Work Group  
Technical Feedback Meeting

CSU-Stanislaus  
November 4, 2008



## Agenda

- Introductions
- Preliminary Restoration Alternatives
  - Alternatives Formulation Process
  - Hills Ferry Barrier Management
- Fish Management Plan
  - Reconciling Approaches
  - Progress
- Next Steps and Future Meetings



## Introductions

- Name
- Agency or Affiliation
- Your number one question about the Program that you think needs to be addressed



## Follow-up From Last Meeting – Why the SJR is Important to You

- Biological and ecological resource
- Balance of environmental, flood control, and water right considerations
- Need to meet Settlement obligations
- Land ownership / property near the SJR
- Community and valley-wide ecological and educational resource
- Cultural and historical resource
- Connections to the Delta
- Public trust resource

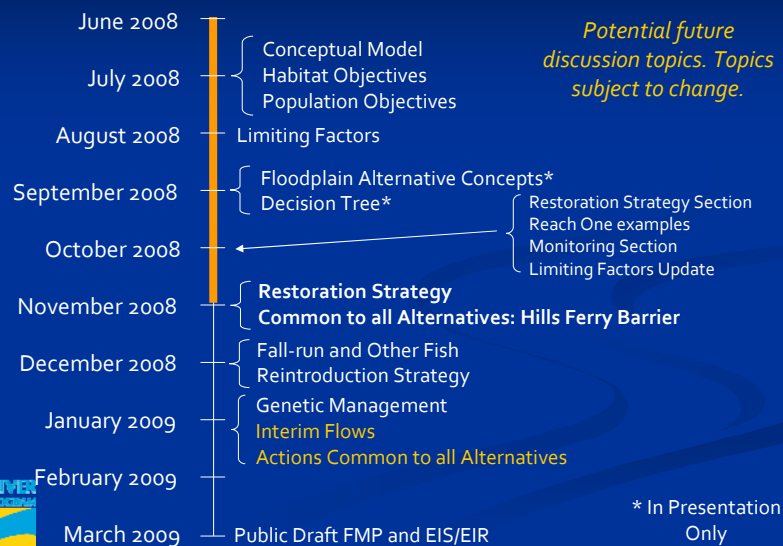


# Meeting Purpose

- Preliminary Restoration Options
  - Update on alternatives formulation process
  - Hills Ferry Barrier Management, current and potential future management actions
- Fish Management Plan Progress
  - Update on approach to the plan and response to input received at the October meeting
  - Update on progress



# Input from the Feedback Group is an Important Aspect of the FMP



# New and Improved Website at [www.restorejr.net!](http://www.restorejr.net)

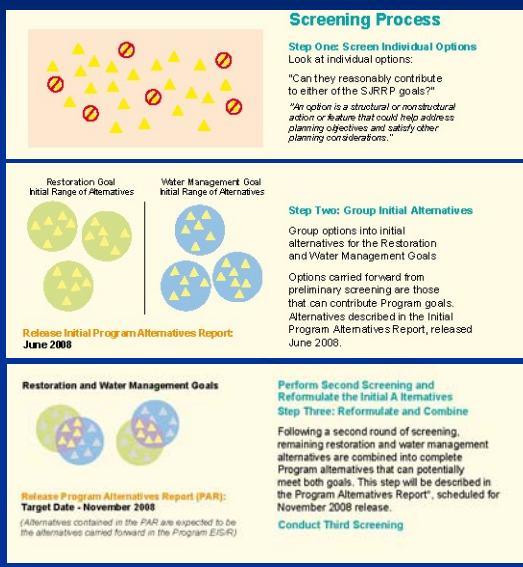
Prior Documents and Meeting Materials Available on the Website

The screenshot displays the website's interface with several key sections:

- Navigation:** Home, Restoration Program (Background & History, Current Activities, Group Activities, Legislation & Funding, Related Links), Program Organization, Documents/Reports, Get More Involved - Learn More, and Help Site Information.
- 2008 Work Group Activities:** Lists meetings for Fisheries Mgmt. Tech. Feedback Meeting (November 4, 2008) and Water Mgmt. Tech. Feedback Meeting (November 7, 2008).
- Public Outreach Technical Feedback Meetings:** A detailed calendar for 2008, including dates and topics for Fisheries Management and Water Mgmt. groups.
- Documents/Reports - Technical Memoranda:** A list of available documents such as 'Monitoring Plan for Physical Parameters', 'Temperature Model Selection Draft TM, June 2008', and 'Regulatory Compliance Strategy Draft TM, November 2007'.

## Approach to Screening Preliminary Alternatives

- Preliminary Alternatives comprised of actions to address:**
  - Water Management Goal
  - Restoration Goal
- Steps:**
  - Step One:**
    - Screen individual options
  - Step Two:**
    - Group initial alternatives
  - Step Three:**
    - Conduct secondary screening
    - Reformulate and combine



## Process for Identifying Preliminary Alternatives



## Identifying Preliminary Restoration Actions / Alternatives

- Three points on a continuum aggregate potential actions
  - Grassy Conveyance
  - Riparian Ribbon
  - Riparian Forest
- The level of vegetation provides an engineering criteria for sizing



# Grassy Conveyance

Reach 2B →



Herbaceous non-woody species  
 $n = 0.04 - 0.055$   
Extensive vegetation maintenance  
Minimal relief and surface variability

Reach 4B →



Draft for discussion purposes only

# Riparian Ribbon

Reach 2B →

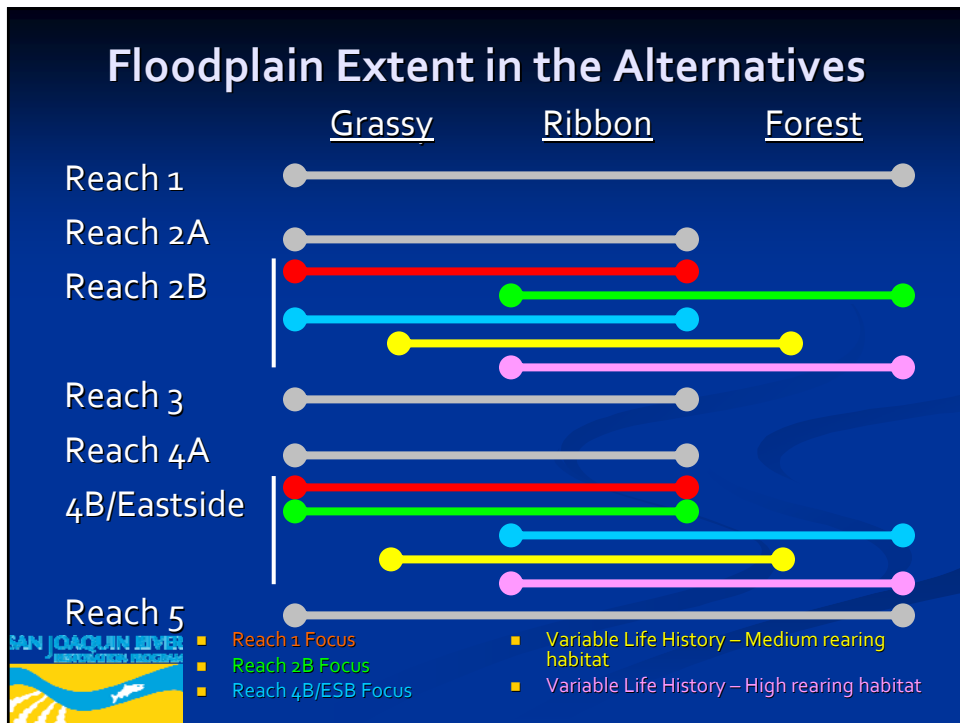
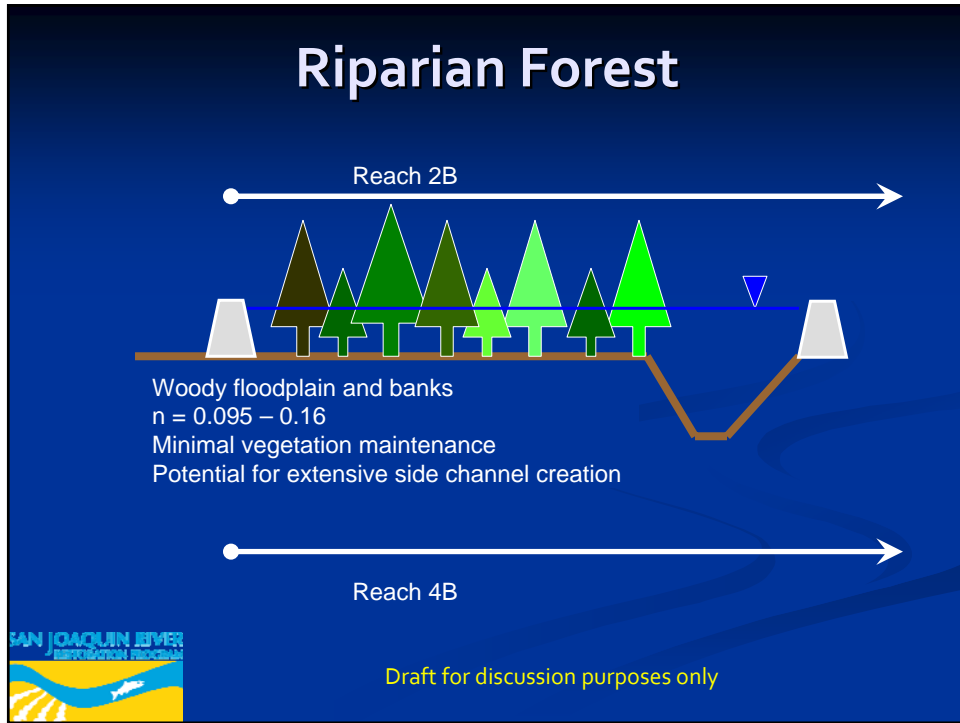


Herbaceous floodplain with woody banks  
 $n = 0.06 - 0.085$   
Buffer with extensive overbank maintenance  
Some bank shaping or terracing

Reach 4B →



Draft for discussion purposes only



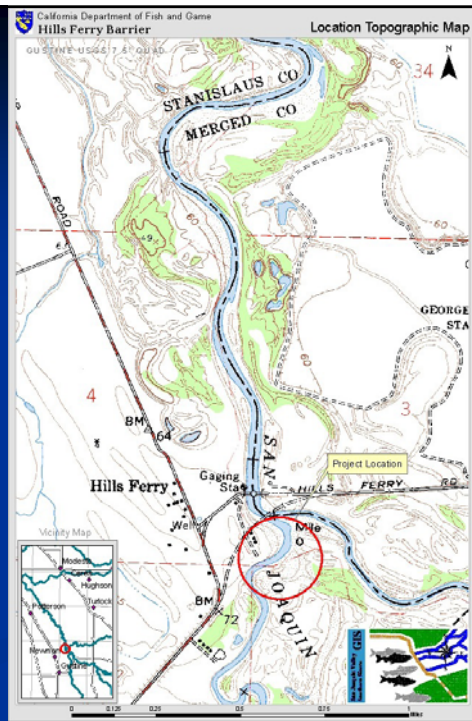
# Variable Life History Considerations

- Incorporate into goals of Fisheries Management Plan
  - Downstream fry rearing
  - Upstream fry rearing
  - Sub-yearling
  - Yearling



# Hills Ferry Barrier Location

- On the San Joaquin River
- Just upstream of the confluence of the SJR and the Merced
- About 3.5 miles east of Newman





## Hills Ferry Barrier

- Purpose: Redirect upstream migrating adult salmon into suitable spawning habitat in the Merced River
- Seasonally operated since 1992
  - Installed mid-September
  - Removed early-December
  - Operated by DFG
  - Project joint effort by DFG and DWR



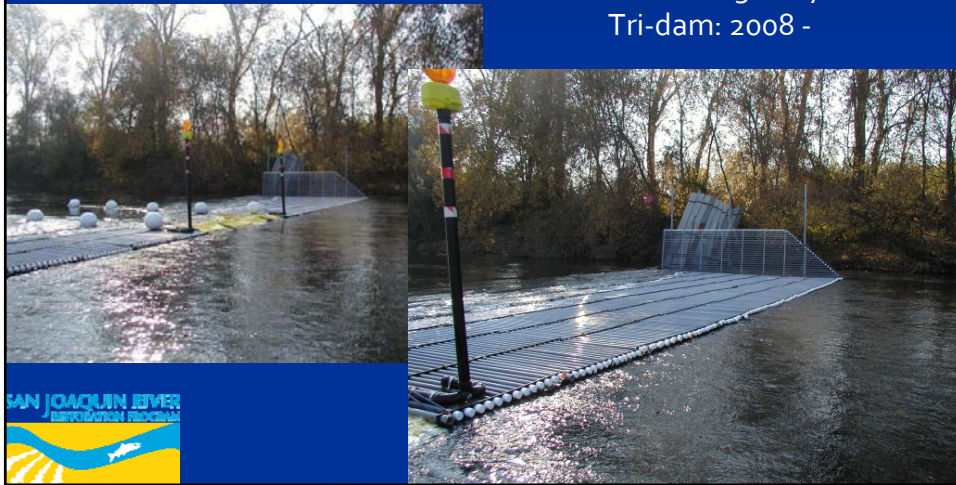
## Hills Ferry Barrier Characteristics

- Relatively "fish tight", but silty riverbed in area of barrier results in erosion around support structures
- Operates effectively under a restricted flow range



# Portable Alaskan Weir, Stanislaus River

AFRP: 2003-2007  
Tri-dam: 2008 -



## Objectives: Test and Demonstrate a Portable Weir to Enumerate Adult Escapement of Salmon and Steelhead



## Portable Alaskan Weir, Stanislaus River



## Hills Ferry: Future Operations ?

- Interim Flow Period
- Restoration Flow Period



## Interim Flow Period

- Flow Durations:
  - 2009 – 6 weeks during fall
  - 2010 – spring and fall
  - 2011 – year round flow
  - 2012 – year round flow
  - 2013 – year round flow
- No later than 2014 – Full Restoration Flows



## Hills Ferry Barrier Concerns During Interim Flow Period

- Operational considerations and changes
- Accommodate monitoring needs
- Others ??



## Hills Ferry Interim Flow Period Operations?

- Potential modifications
- Extending season (beyond December)
- Operational range (flow ranges?)
- Other ?



## Interim Flow: Potential Anadromous Fish Encounters

- Spring-run Chinook salmon
- Fall-run Chinook salmon
- Central Valley steelhead
- Other ?



## Hills Ferry Barrier: Restoration Flow Period

- Possible changes in use:
  - Upgrades ?
  - Monitoring objectives ?
  - Purpose ?
- Should we use the site for monitoring actions?
- What monitoring actions should be considered?



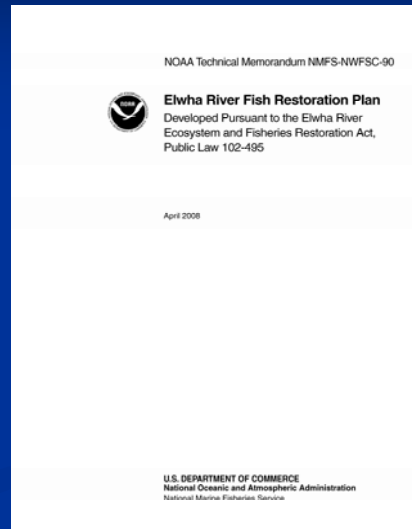
## Fish Management Plan Approach

- Input from October meeting - Need for river vision and associated actions
- Response to comments on Fish Management Plan Approach



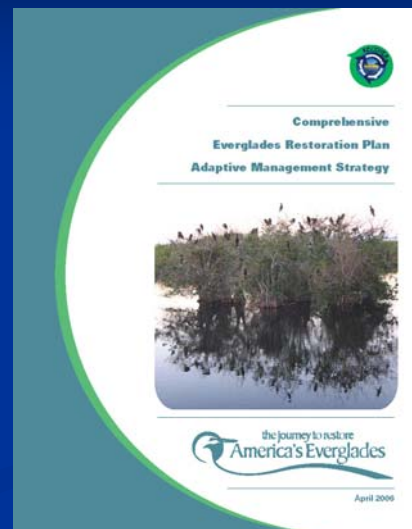
# Elwha River Fish Restoration Plan

- Similarities and differences to the SJRRP FMP approach



# Comprehensive Everglades Restoration Plan

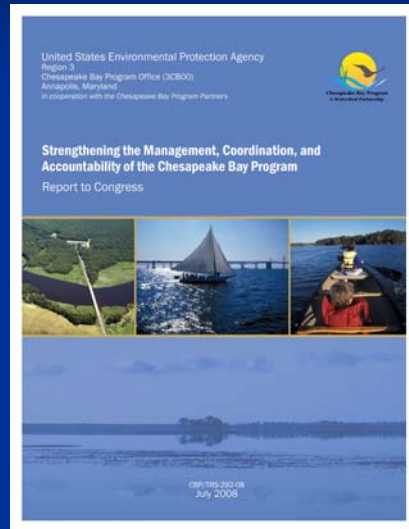
- Similarities and differences to the SJRRP FMP approach





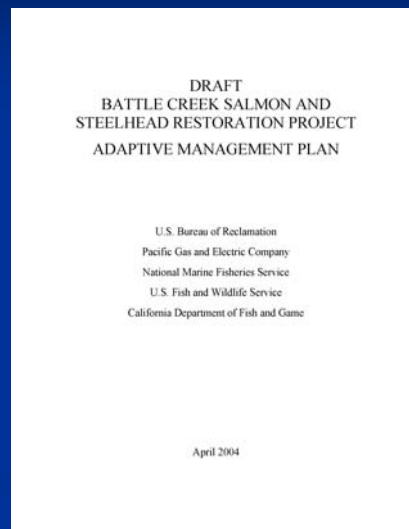
# Chesapeake Bay Program

- Similarities and differences to the SJRRP FMP approach



# Battle Creek Salmon and Steelhead Adaptive Management Plan

- Similarities and differences to the SJRRP FMP approach





## Sections of the FMP

- Chapter 1: Introduction
  - Purpose
  - Planning criteria, planning process, and plan assumptions
  - External review
- Chapter 2: Existing Conditions
- Chapter 3: Restoration Strategy
- Chapter 4: Restoration Goals
  - Physical habitat goals
  - Fish population goals
- Chapter 5: Conceptual and Quantitative Modeling
- Chapter 6: Restoration Objectives and Management
  - Restoration strategy
  - Objectives
  - Reach-by-reach evaluation and action routing
- Chapter 7: Program Monitoring and Performance Measures
- Chapter 8: Program Assessment and Evaluation
- Restoration Flows Appendix
  - Interim Flows
  - Restoration Flows



FMP = Fisheries Management Plan

## Next Meetings

- December 9
  - Topics:
    - Genetic Management
    - Any Outstanding Topics
  - Meeting at CSU Stanislaus
- January – Date to be Determined
  - Potential topics:
    - Genetic Management
    - Interim Flows
    - Program Alternative Report
  - Meeting location to be provided
- All meetings from 1:00 p.m. to 4:00 p.m.



