

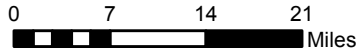
Sources: Esri, DeLorme, NAVTEQ, TomTom, Intermap, increment P Corp., GEBCO, USGS, FAO, NPS, NRCAN, GeoBase, IGN, Kadaster NL, Ordnance Survey, Esri Japan, METI, Esri China (Hong Kong), swisstopo, and the GIS User Community

**Elevation Change (feet)
July 2017 to December 2017-Free**

- 0 to 0.15
- 0.15 to 0
- 0.3 to -0.15

Subsidence Monitoring Points

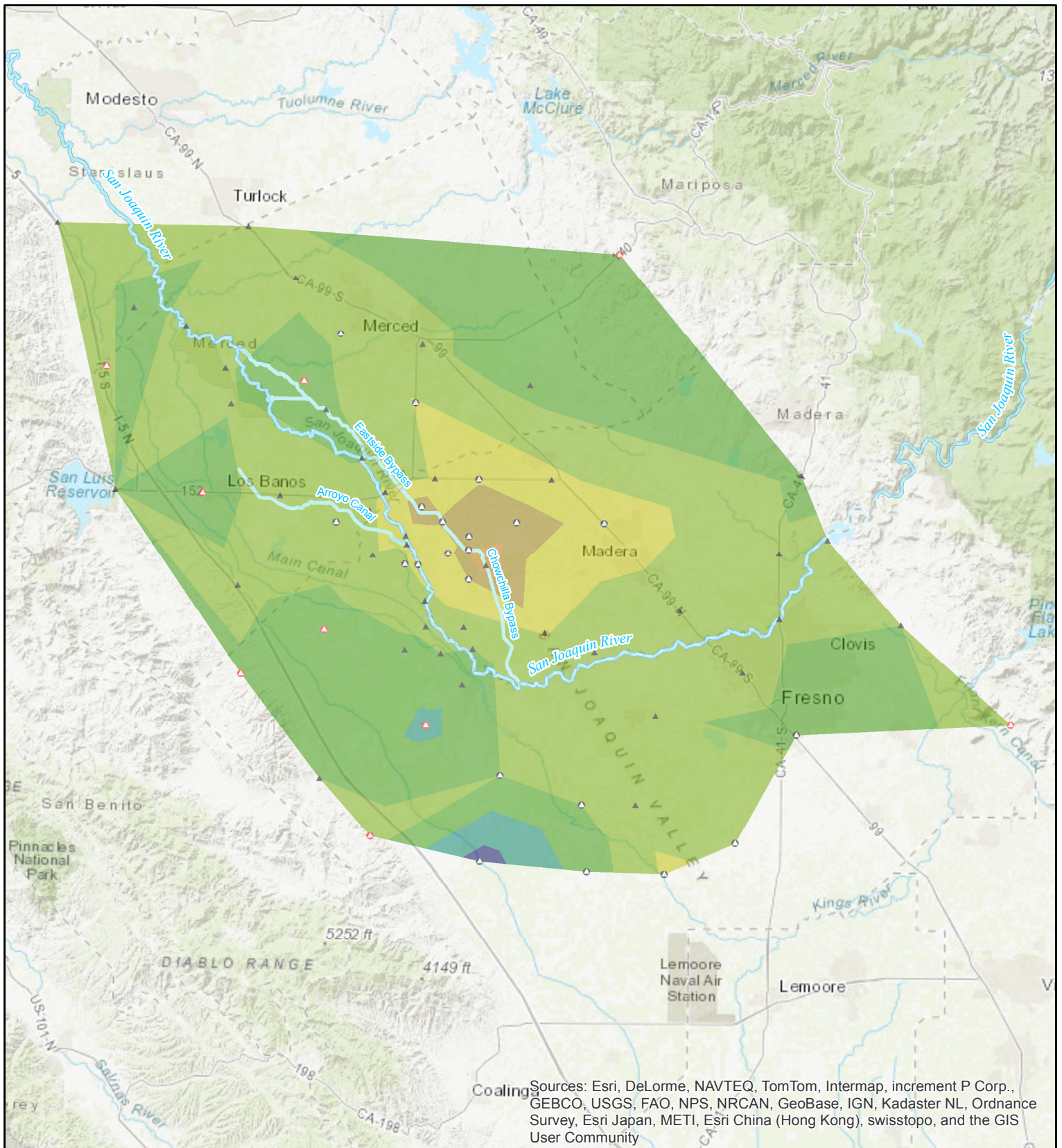
- December 2011
- Added July 2012
- Added December 2013



RECLAMATION
Managing Water in the West

**Central Valley Subsidence
Elevation Change From
July 2017 to December 2017**

Subsidence rates calculated by comparing survey values at monitoring points for the dates specified in the legend.



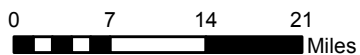
Sources: Esri, DeLorme, NAVTEQ, TomTom, Intermap, increment P Corp., GEBCO, USGS, FAO, NPS, NRCAN, GeoBase, IGN, Kadaster NL, Ordnance Survey, Esri Japan, METI, Esri China (Hong Kong), swisstopo, and the GIS User Community

**Subsidence Rates (feet/year)
December 2016 to December 2017**

- 0.3 - 0.37
- 0.15 - 0.3
- 0 - 0.15
- 0.15 - 0
- 0.3 - -0.15
- 0.45 - -0.3
- 0.6 - -0.45

Subsidence Monitoring Points

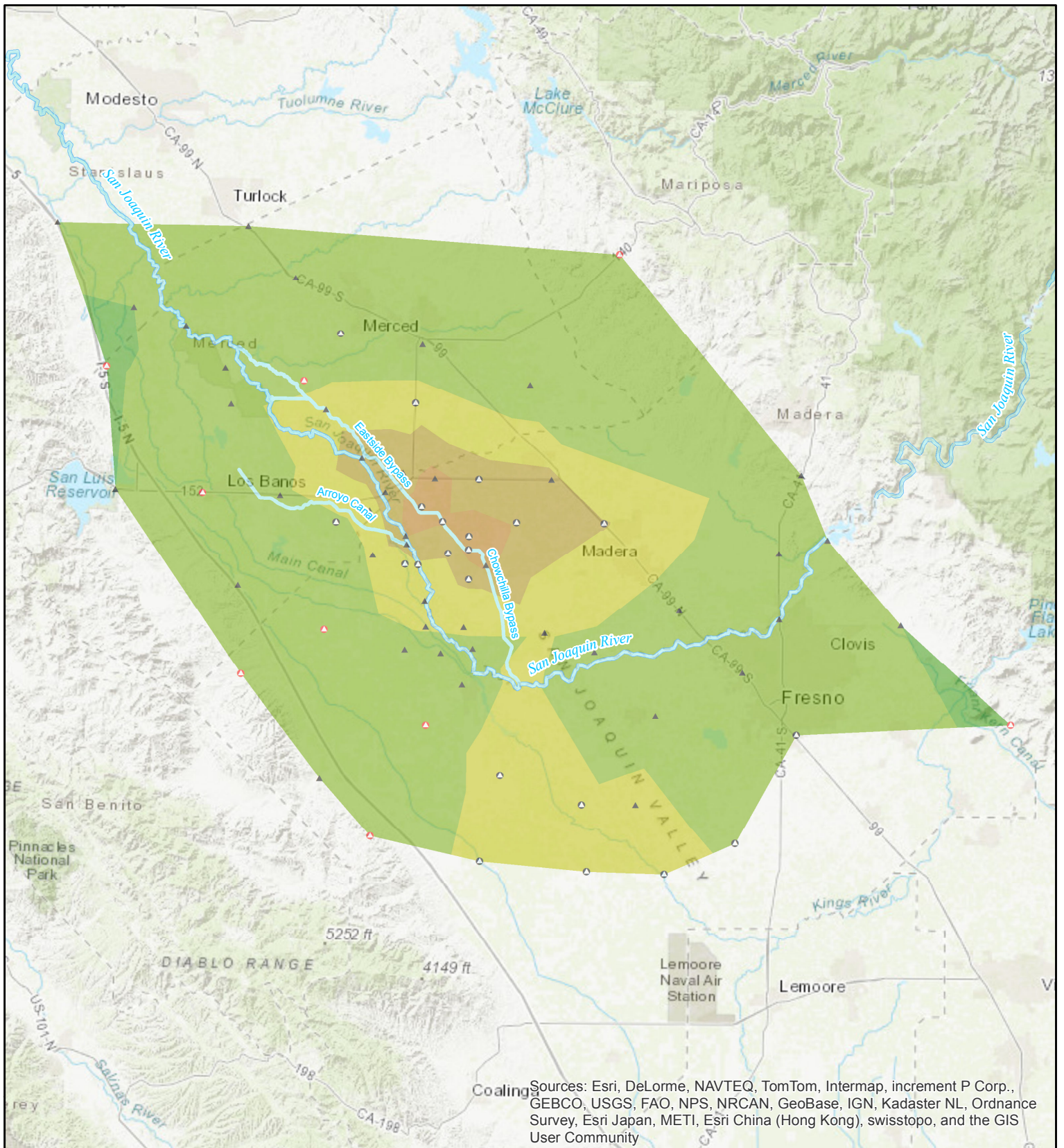
- ▲ December 2011
- Added July 2012
- ◊ Added December 2013



RECLAMATION
Managing Water in the West

**Central Valley Subsidence
Annual Rates
December 2016 to December 2017**

Subsidence rates calculated by comparing survey values at monitoring points for the dates specified in the legend.



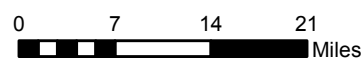
Sources: Esri, DeLorme, NAVTEQ, TomTom, Intermap, increment P Corp., GEBCO, USGS, FAO, NPS, NRCAN, GeoBase, IGN, Kadaster NL, Ordnance Survey, Esri Japan, METI, Esri China (Hong Kong), swisstopo, and the GIS User Community

**Subsidence Rates (feet/year)
December 2011 to December 2017**

- 0 to 0.15
- 0.15 to 0
- 0.3 to -0.15
- 0.45 to -0.3
- 0.6 to -0.45

Subsidence Monitoring Points

- ▲ December 2011
- Added July 2012
- ◊ Added December 2013



RECLAMATION
Managing Water in the West

**Central Valley Subsidence
Annual Rates
December 2011 to December 2017**

Subsidence rates calculated by comparing survey values at monitoring points for the dates specified in the legend.