

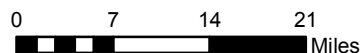
Sources: Esri, DeLorme, NAVTEQ, TomTom, Intermap, increment P Corp., GEBCO, USGS, FAO, NPS, NRCAN, GeoBase, IGN, Kadaster NL, Ordnance Survey, Esri Japan, METI, Esri China (Hong Kong), swisstopo, and the GIS User Community

**Subsidence Rates (feet/year)  
July 2012 to July 2016**

- 0.15 to 0.3
- 0 to 0.15
- 0.15 to 0
- 0.3 to -0.15
- 0.45 to -0.3
- 0.6 to -0.45
- 0.75 to -0.6

**GPS Coordinates**

- ▲ GPS Point-December 2011
- GPS Point-added July 2012
- ◊ GPS Point-added December 2013

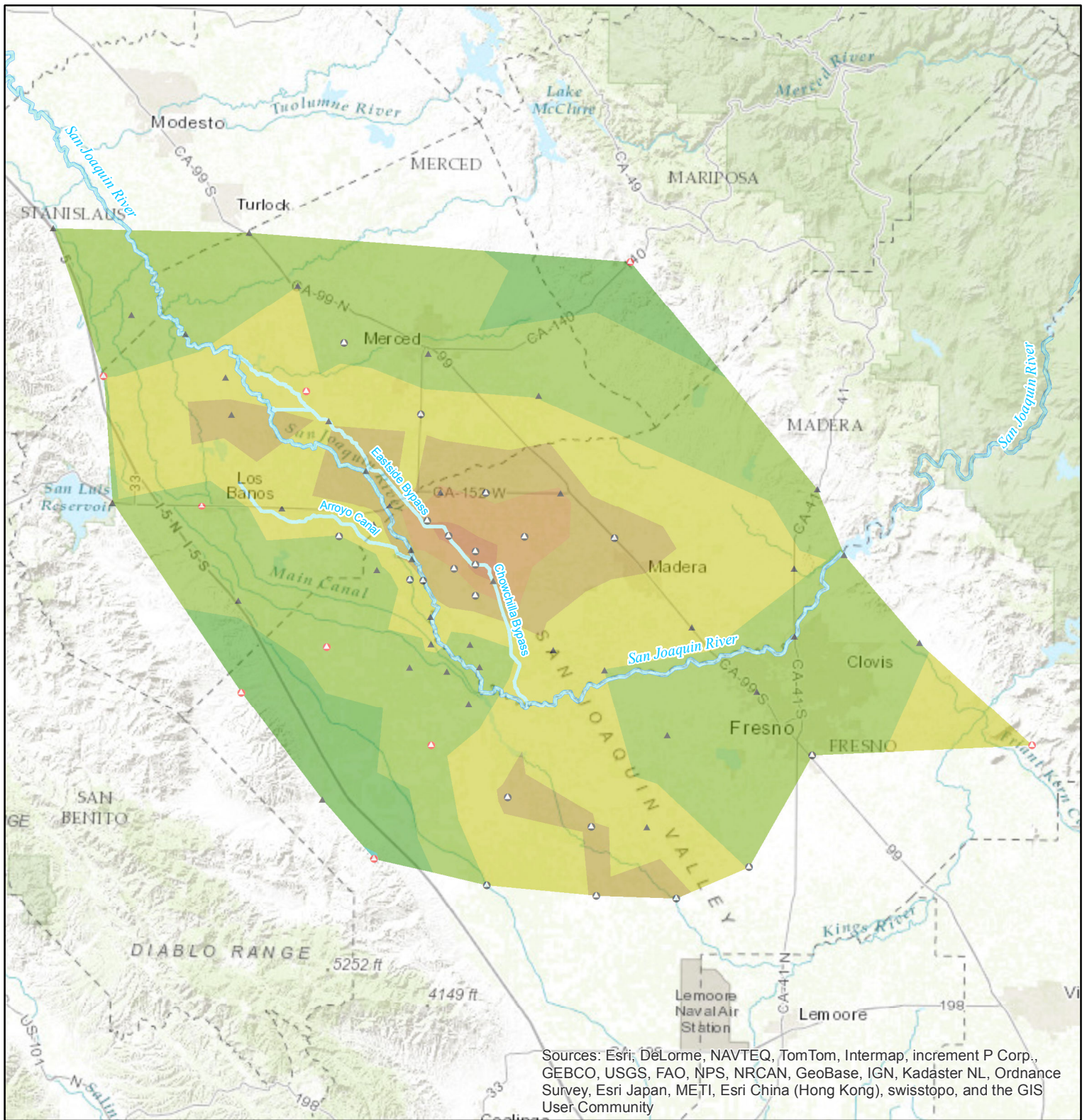


**RECLAMATION**  
*Managing Water in the West*

**Central Valley Subsidence  
Annual Rates  
July 2012 to July 2016**

Subsidence rates calculated by comparing survey values at GPS Stations for the dates specified in the legend.





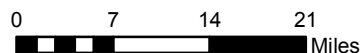
Sources: Esri, DeLorme, NAVTEQ, TomTom, Intermap, increment P Corp., GEBCO, USGS, FAO, NPS, NRCAN, GeoBase, IGN, Kadaster NL, Ordnance Survey, Esri Japan, METI, Esri China (Hong Kong), swisstopo, and the GIS User Community

**Subsidence Rates (feet/year)  
July 2015 to July 2016**

- 0.15 to 0.3
- 0 to 0.15
- 0.15 to 0
- 0.3 to -0.15
- 0.45 to -0.3
- 0.6 to -0.45
- 0.75 to -0.6

**GPS Coordinates**

- ▲ GPS Point-December 2011
- GPS Point-added July 2012
- ◇ GPS Point-added December 2013



**RECLAMATION**  
*Managing Water in the West*

**Central Valley Subsidence  
Annual Rates  
July 2015 to July 2016**

Subsidence rates calculated by comparing survey values at GPS Stations for the dates specified in the legend.