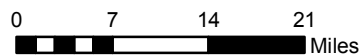


**Subsidence Monitoring Points**

- ▲ December 2011
- Added July 2012
- ◌ Added December 2013

**Subsidence Rates (feet/year)  
December 2015 to December 2016**

- Less than 0.15 feet
- 0.3 to -0.15
- 0.45 to -0.3
- 0.6 to -0.45
- 0.75 to -0.6

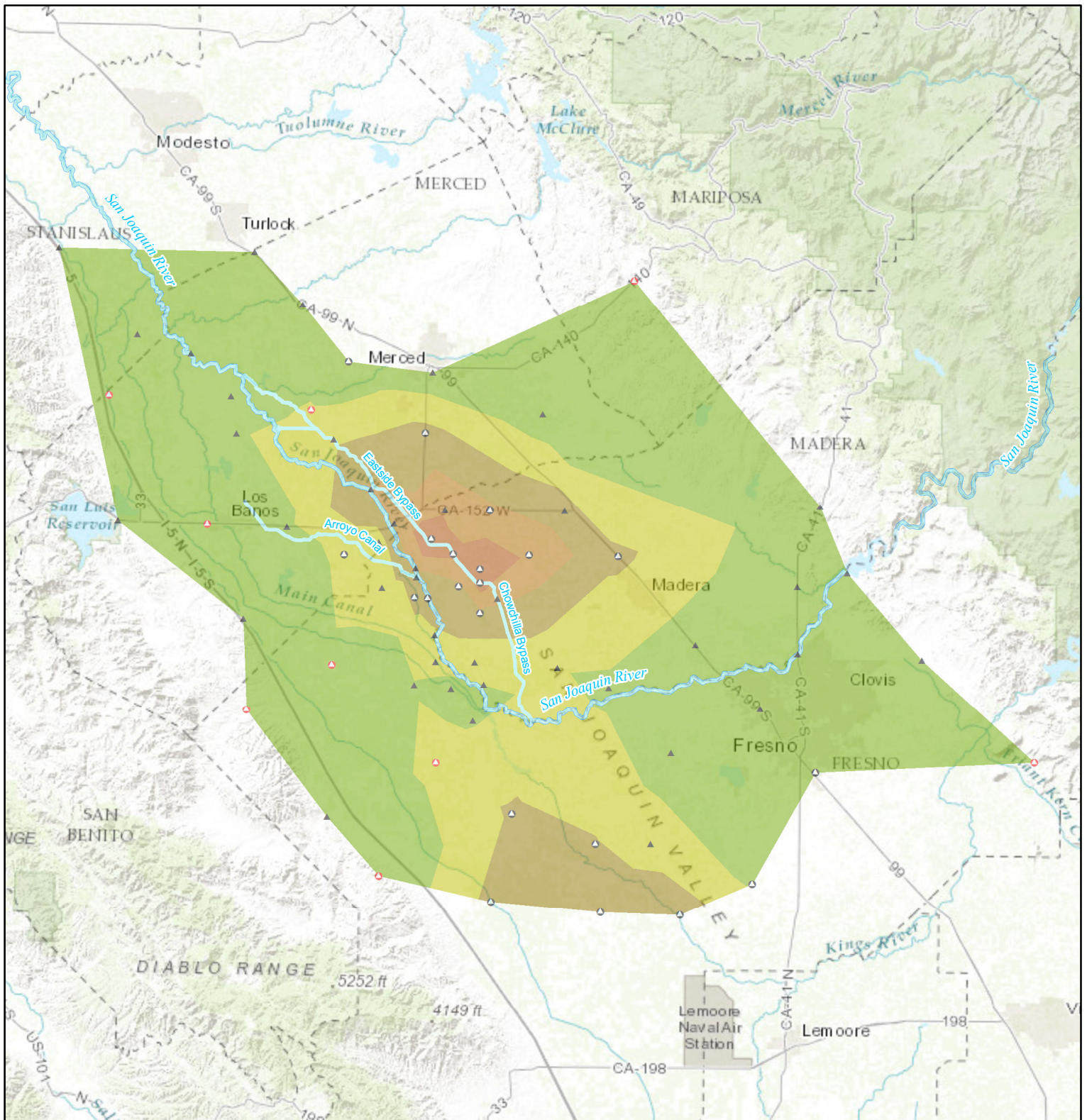


**RECLAMATION**  
*Managing Water in the West*

**Central Valley Subsidence  
Annual Rates  
December 2015 to December 2016**

Subsidence rates calculated by comparing survey values at monitoring points for the dates specified in the legend.



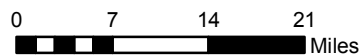


**Subsidence Monitoring Points**

- ▲ December 2011
- Added July 2012
- ◌ Added December 2013

**Subsidence Rates (feet/year)  
December 2011 to December 2016**

- Less than 0.15 feet
- 0.3 to -0.15
- 0.45 to -0.3
- 0.6 to -0.45
- 0.75 to -0.6

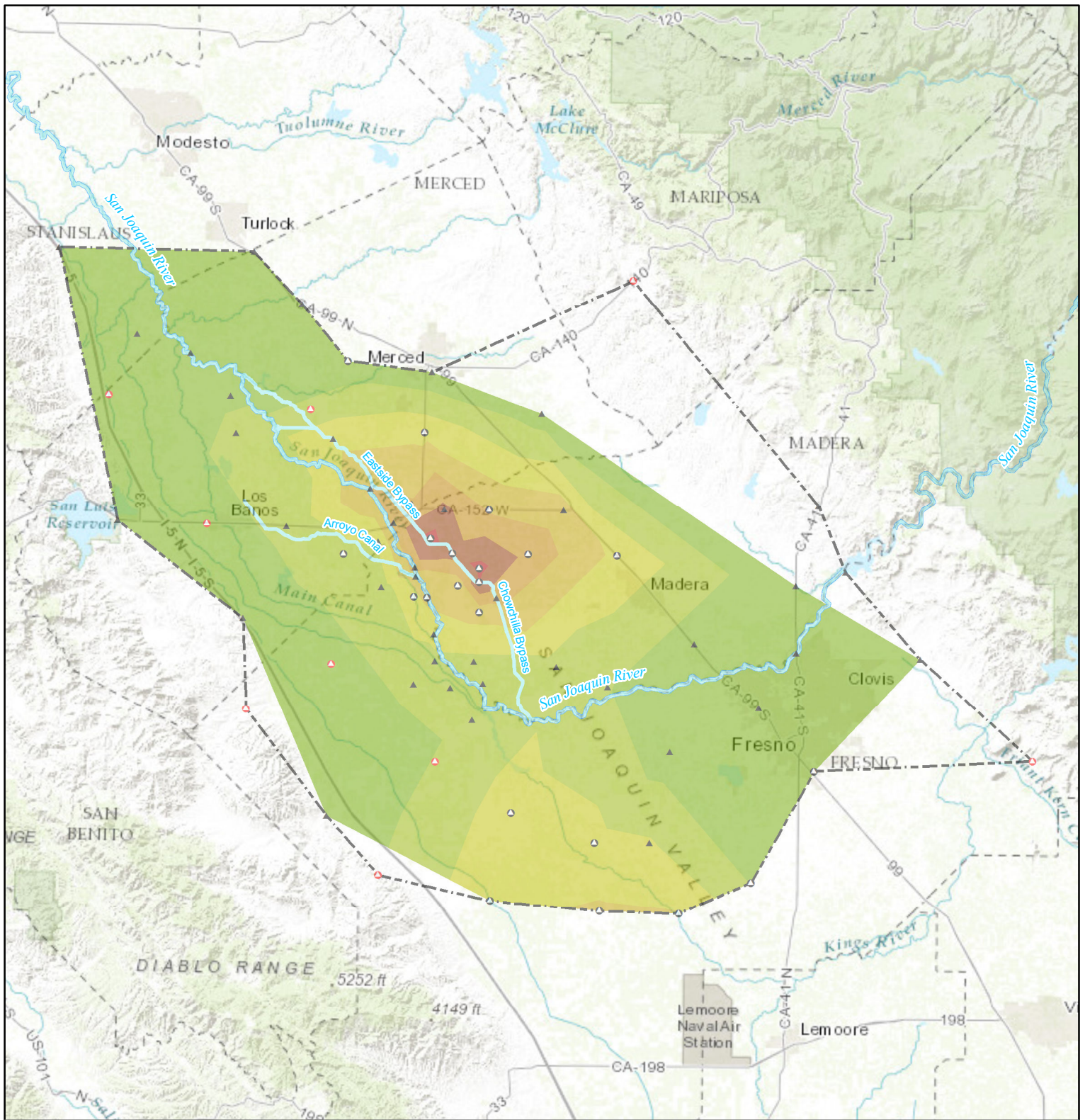


**RECLAMATION**  
*Managing Water in the West*

**Central Valley Subsidence  
Annual Rates  
December 2011 to December 2016**

Subsidence rates calculated by comparing survey values at monitoring points for the dates specified in the legend.



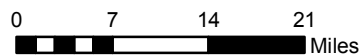


**Subsidence Monitoring Points**

- ▲ December 2011
- Added July 2012
- ◇ Added December 2013
- Area monitored after December 2013

**Subsidence (feet)  
July 2012 to December 2016**

- Less than 0.5
- 1 to -0.5
- 1.5 to -1
- 2 to -1.5
- 2.5 to -2
- 3 to -2.5
- 3.5 to -3



**RECLAMATION**  
*Managing Water in the West*

**Central Valley Subsidence  
Total Subsidence  
July 2012 to December 2016**

Subsidence calculated by comparing survey values at monitoring points for the dates specified in the legend.