

Field Activity Advisory San Joaquin River Reach 3 Levee Survey January 2018

The San Joaquin River Restoration Program (SJRRP) is preparing to conduct topographical surveys of levees located in Reach 3 of the San Joaquin River Restoration Area in order to evaluate the condition of these levees.

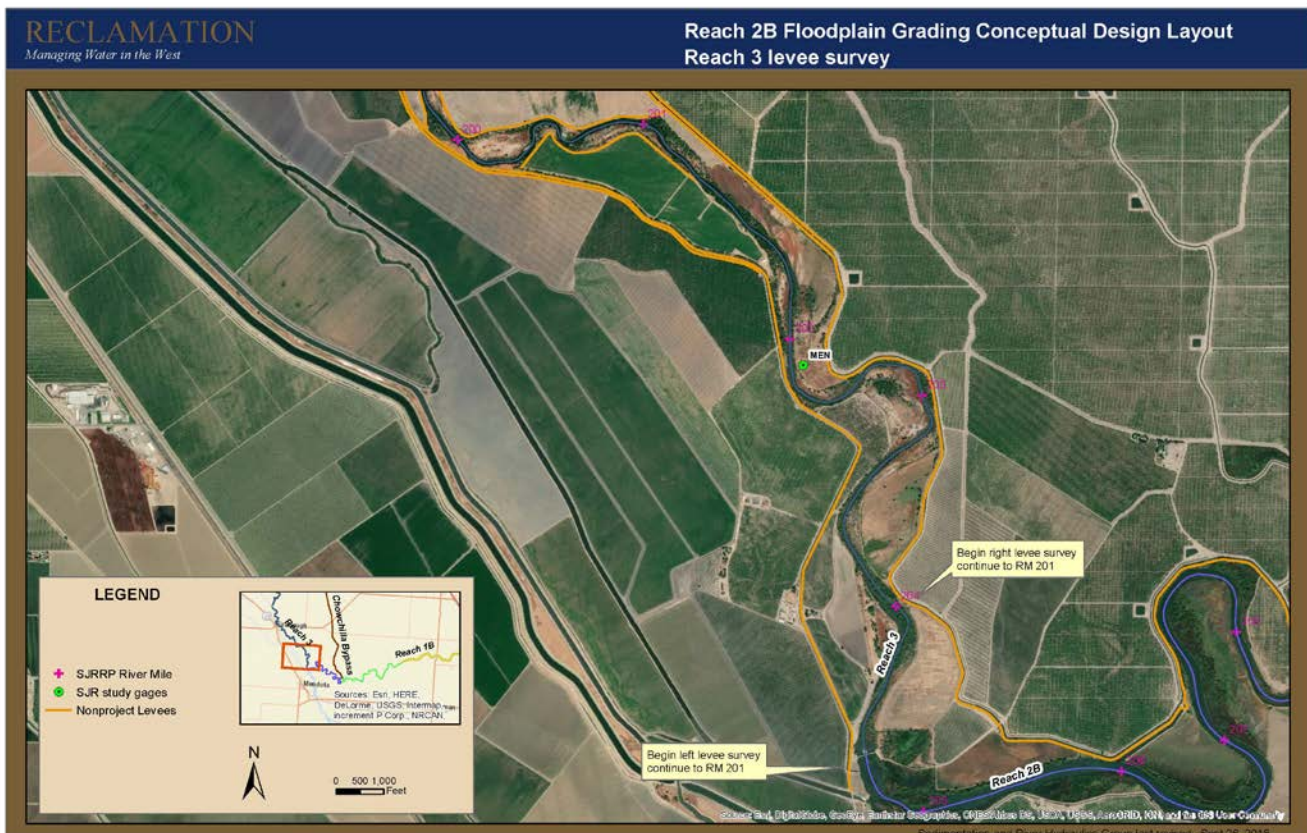
Who: U.S. Bureau of Reclamation

What: Reclamation staff will be conducting topographic surveys in Reach 3 to evaluate the condition of the levees in this section of the San Joaquin River. Top of levee elevations will be collected approximately every 25 feet starting at Mendota Dam and continuing to river mile 201 on the right river bank. This information will inform Mendota Pool Bypass and Reach 2B Improvements project planning in order to address any potential downstream project effects. In addition, the information gathered will help calibrate hydraulic and sediment modeling as well as inform any future design in this reach.

When: January 14, 2019 – January 25, 2019

Where: Reach 3 of the San Joaquin River (see Figure A below)

Figure A



Questions about SJRRP field activities on public and private land should be directed to the SJRRP Landowner Coordinator below. Questions about the SJRRP should be directed to the Public Affairs Specialist below.

Josh Newcom

Public Affairs Specialist
San Joaquin River Restoration Program
Phone: (916) 978-5508
Email: snewcom@usbr.gov

Craig Moyle

Landowner Coordinator
San Joaquin River Restoration Program
Phone: 916-418-8248
Email: craig.moyle@stantec.com

Contact the SJRRP Hotline, 916-978-4398, or email RestorationFlows@restoresjr.net if you see any problems or have any concerns.

For more information, please visit the SJRRP Web site at www.restoresjr.net or contact Josh Newcom, Public Affairs Specialist, at 916-978-5508. Field Advisories for activities are available at <http://restoresjr.net/get-involved/field-advisories/>