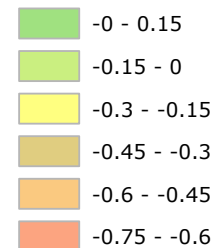
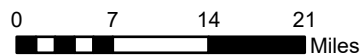


**Subsidence Rates (feet/year)**



**Subsidence Monitoring Points**

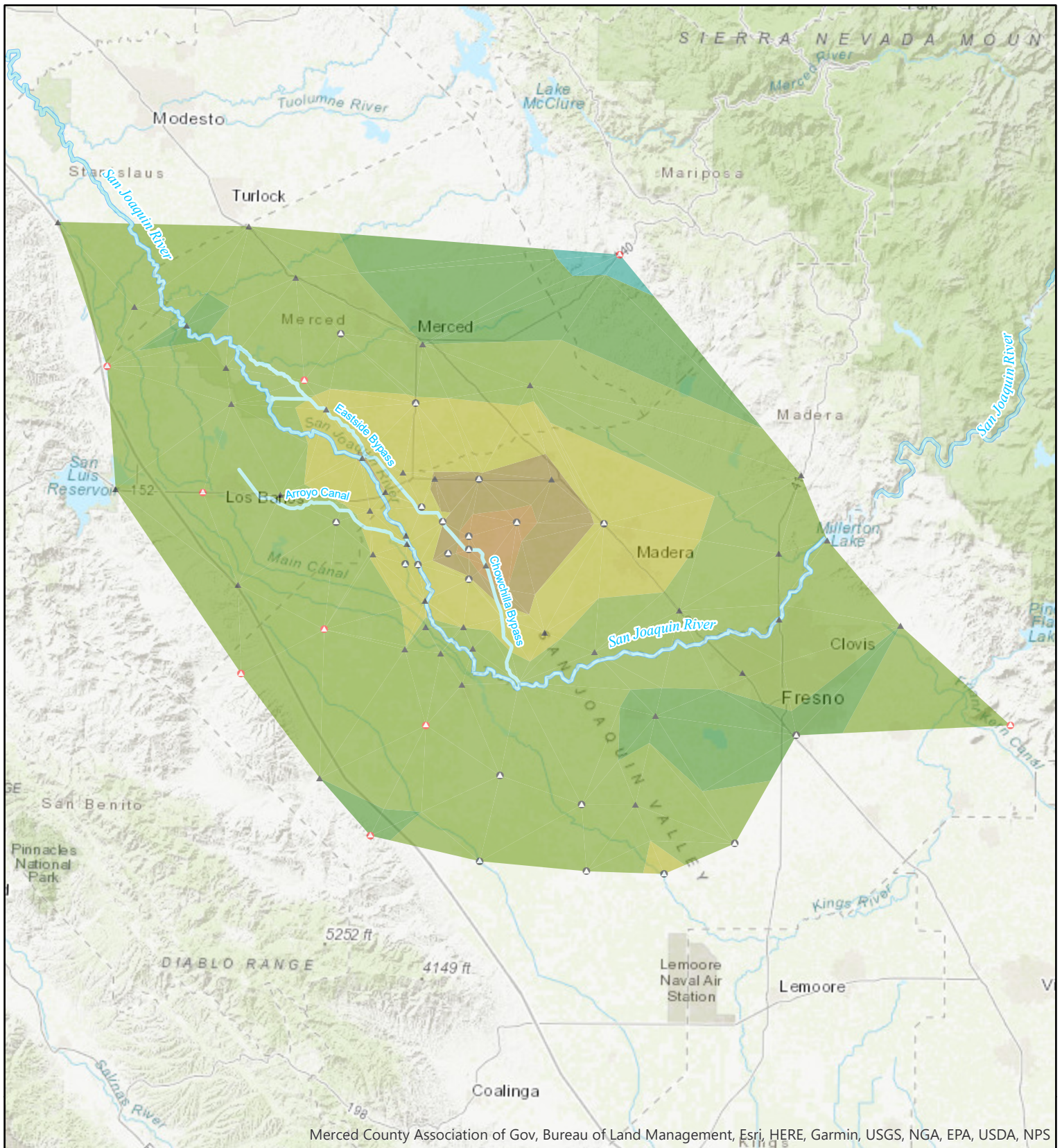
- December 2011
- Added July 2012
- Added December 2013



**RECLAMATION**  
*Managing Water in the West*

**Central Valley Subsidence  
Elevation Change From  
December 2011 to December 2018**

Subsidence rates calculated by comparing survey values at monitoring points for the dates specified in the legend.



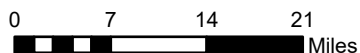
Merced County Association of Gov, Bureau of Land Management, Esri, HERE, Garmin, USGS, NGA, EPA, USDA, NPS

**Subsidence Rates (feet/year)**

- 0.15 - 0.3
- 0 - 0.15
- -0.15 - 0
- -0.3 - -0.15
- -0.45 - -0.3
- -0.6 - -0.45
- -0.75 - -0.6

**Subsidence Monitoring Points**

- ▲ December 2011
- Added July 2012
- ◇ Added December 2013



**RECLAMATION**  
*Managing Water in the West*

**Central Valley Subsidence  
Elevation Change From  
December 2017 to December 2018**

Subsidence rates calculated by comparing survey values at monitoring points for the dates specified in the legend.