



Field Activity Advisory
**Mendota Pool Bypass and Reach 2B Improvements
Project
Pre-Construction Surveys**
March 26, 2019

The San Joaquin River Restoration Program (SJRRP) is preparing to conduct pre-construction surveys for the first phases of the Mendota Pool Bypass and Reach 2B Improvements Project (Project). While construction activities for this project are not currently anticipated to begin until mid-2019, these pre-construction surveys are required environmental commitments as per the 2016 Record of Decision for the Project and are needed to inform Project planning efforts. The surveys will include pedestrian surveys for special status plant and animal species. Surveys are anticipated to take one day, however, several survey dates are needed during the period of April – July 2019. A map of the survey areas is located below.

Who: Live Oak Associates

What: Special status species pre-construction surveys

When: Intermittently April through July 2019

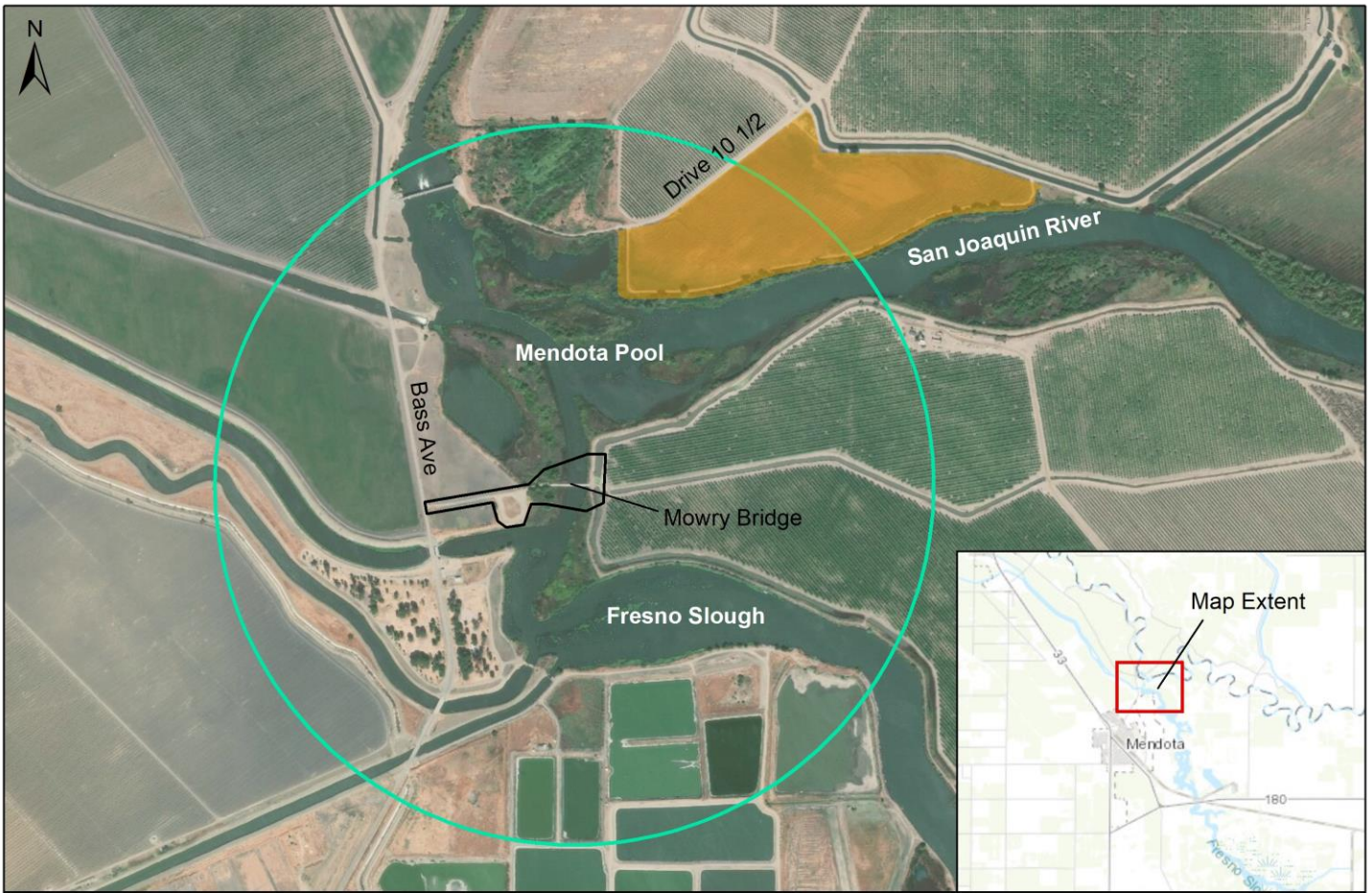
Where: The surveys will occur on the parcel of land previously owned by Mitigation Lands Trust that has been recently acquired by Reclamation for the Project and at Mowry Bridge. Access for the surveys will occur on public roads and private property with landowner permission.

Questions about this activity or the SJRRP should be directed to Josh Newcom, Public Affairs Specialist. Questions about activities on private land should be directed to the SJRRP Landowner Coordinator, Craig Moyle.

Josh Newcom, Public Affairs Specialist
U.S. Bureau of Reclamation
Office: (916) 978-5508
Email: snewcom@usbr.gov

Craig Moyle, Landowner Coordinator
Office (direct line): 916-418-8248
Mobile: 916-642-6383
E-mail: craig.moyle@stantec.com

For more information about the Program, please visit www.restoresjr.net.



Former MLT Property (Vegetation & Pre-Construction Surveys)
 Mowry Bridge Replacement Project Area (Vegetation Survey)
 Mowry Bridge 1/2 Mile Buffer (Swainson's Hawk Survey)

0 750 1,500 2,250 3,000 Feet