



Bureau of Reclamation
2800 Cottage Way, MP-170
Sacramento, Calif. 95825-1898

Field Activity Advisory Mitigation Lands Trust Berm Repair May 2019

The San Joaquin River Restoration Program (SJRRP) will repair an earthen levee on government-owned land along the Mendota Pool's northern side. The Mitigation Lands Trust (MLT) Berm Repair will construct an access road and super-sack cofferdam to minimize seepage and allow for dewatering of the MLT property (Figure 1). Additional construction activities may include building a working pad to allow heavy equipment to gain access to seepage areas and localized trenching and culvert installation to aid in field drainage. Reclamation acquired the MLT property in 2018 as part of the Reach 2B and Mendota Pool Bypass Project. See Figure 2 and Figure 3 for additional project details.



Figure 1. Fully Filled Super Sacks

Who: TSI Engineering Inc.

What: Super sack cofferdam and access road construction and dewatering.

When: May 2 through May 17

Where: Construction will take place on the former MLT Property in Madera County. Access to the construction site will occur on public roads.

Questions about SJRRP field activities on public and private land should be directed to the SJRRP Landowner Coordinator or Public Affairs Specialist below.

Josh Newcom
Public Affairs Specialist
San Joaquin River Restoration Program
Phone: (916) 978-5508
Email: snewcom@usbr.gov

Craig Moyle
Landowner Coordinator
San Joaquin River Restoration Program
Phone: 916-418-8248
Email: craig.moyle@stantec.com

Contact the SJRRP Hotline, 916-978-4398, or email sjrrp@restoresjr.net if you see any problems or have any concerns.
For more information, please visit the SJRRP Web site at www.restoresjr.net.
Field Advisories for activities are available at <http://www.restoresjr.net/get-involved/field-advisories/>

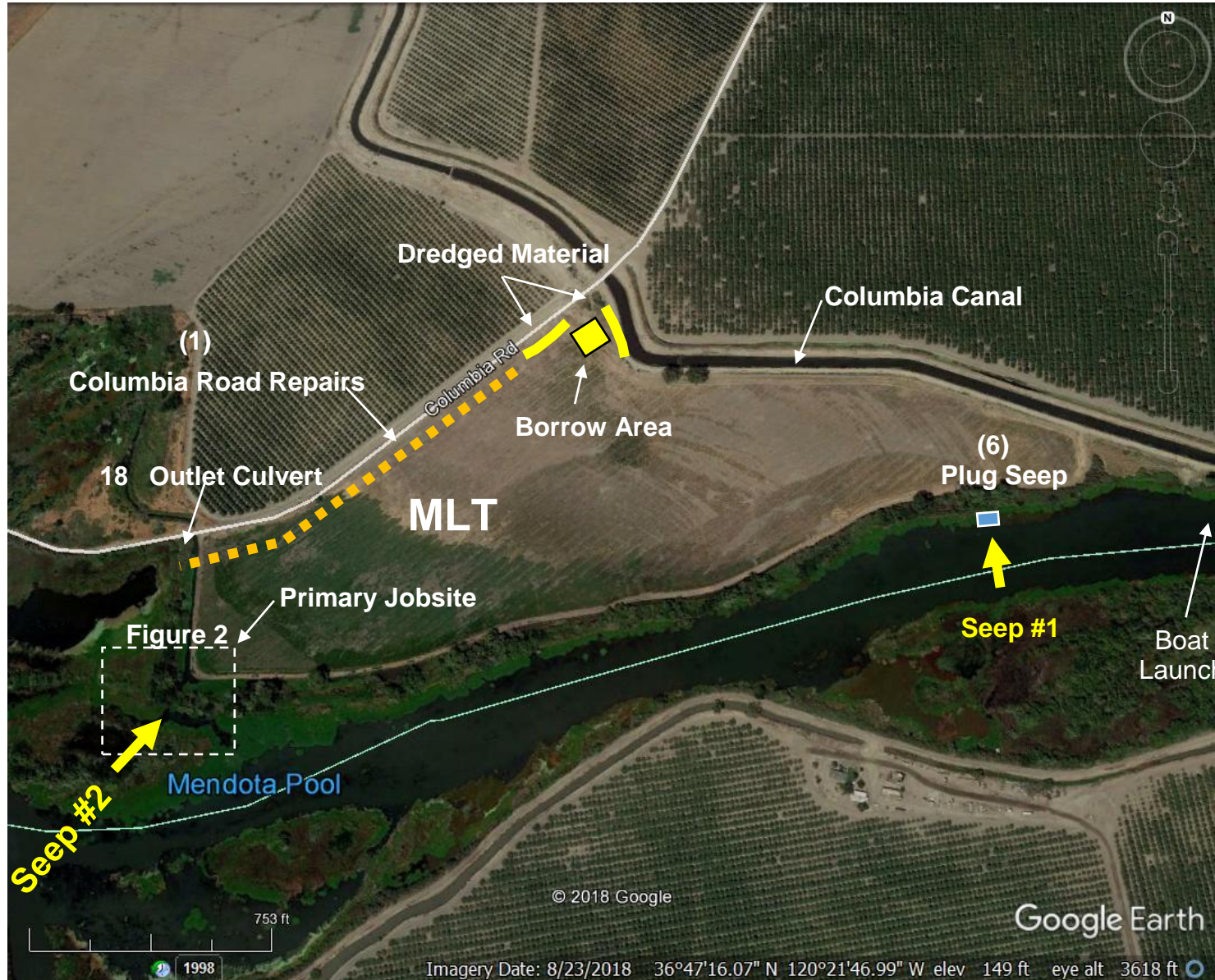


FIGURE 2. Location Map

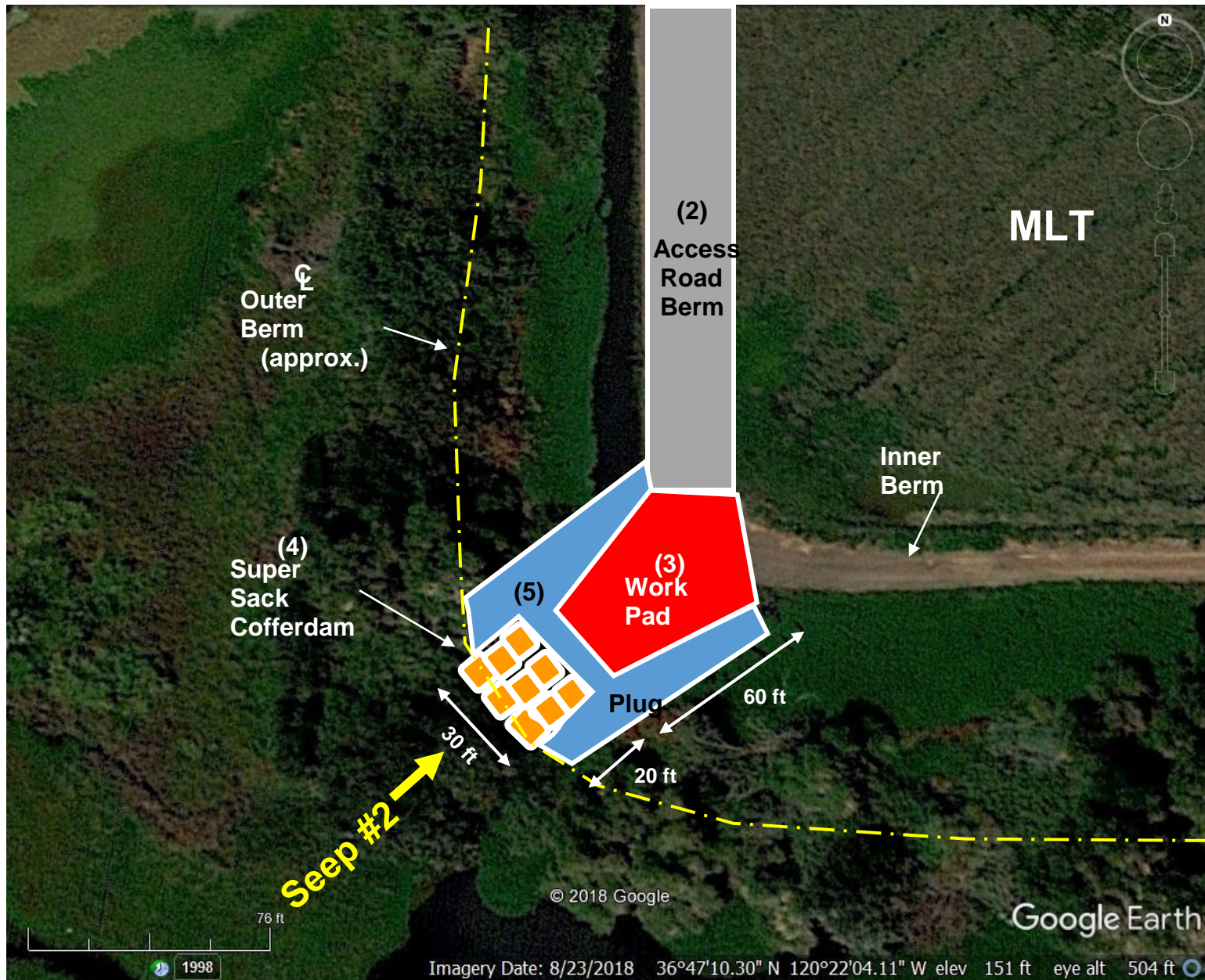


FIGURE 3. Work Sequence to Access and Plug Seep #2