



Bureau of Reclamation
2800 Cottage Way, MP-170
Sacramento, Calif. 95825-1898

Subsidence Monitoring Survey Field Advisory July 22, 2019

The Bureau of Reclamation will conduct land subsidence surveys the week of July 22. The surveys include measurements of 73 control points/survey benchmarks at various roads, bridges and canal structures within a 4,000 square-mile area that overlay the Restoration Area. Initiated in 2011, the surveys assist Implementing Agencies of the San Joaquin River Restoration Program and other stakeholders with monitoring changes in land elevation and evaluate how such changes effect, among other things, Program activities, river and canal conveyance, and facilities of the State Plan of Flood Control. To monitor the rate of subsidence over time, Reclamation conducts surveys of the established network biannually in July and December. Results of the monitoring are included in a Subsidence Monitoring Technical Memorandum available on the Restoration Program website (<http://www.restoresjr.net/science/subsidence-monitoring/>).

Who: U.S. Bureau of Reclamation

What: A team of five one-person survey crews will visit survey monuments by vehicle and record the elevation using static GPS methods. One survey crew serves as the ground control point for data collection at other sites. Most survey locations are in the public right-of-way and will not impede vehicle traffic.

Where: The western edge of the survey area is roughly bounded by Interstate 5 from the city of Patterson to a point due west of the city of Kingsburg. The southern boundary extends eastward to a point adjacent to the Friant-Kern Canal due east of the city of Sanger. The eastern edge of the survey area extends northwest along the Sierra Nevada foothills to a point approximately 60 miles due east of the city of Patterson (See Figure 1).

When: July 22 to July 26, 2019. Surveys will be completed during daytime hours.

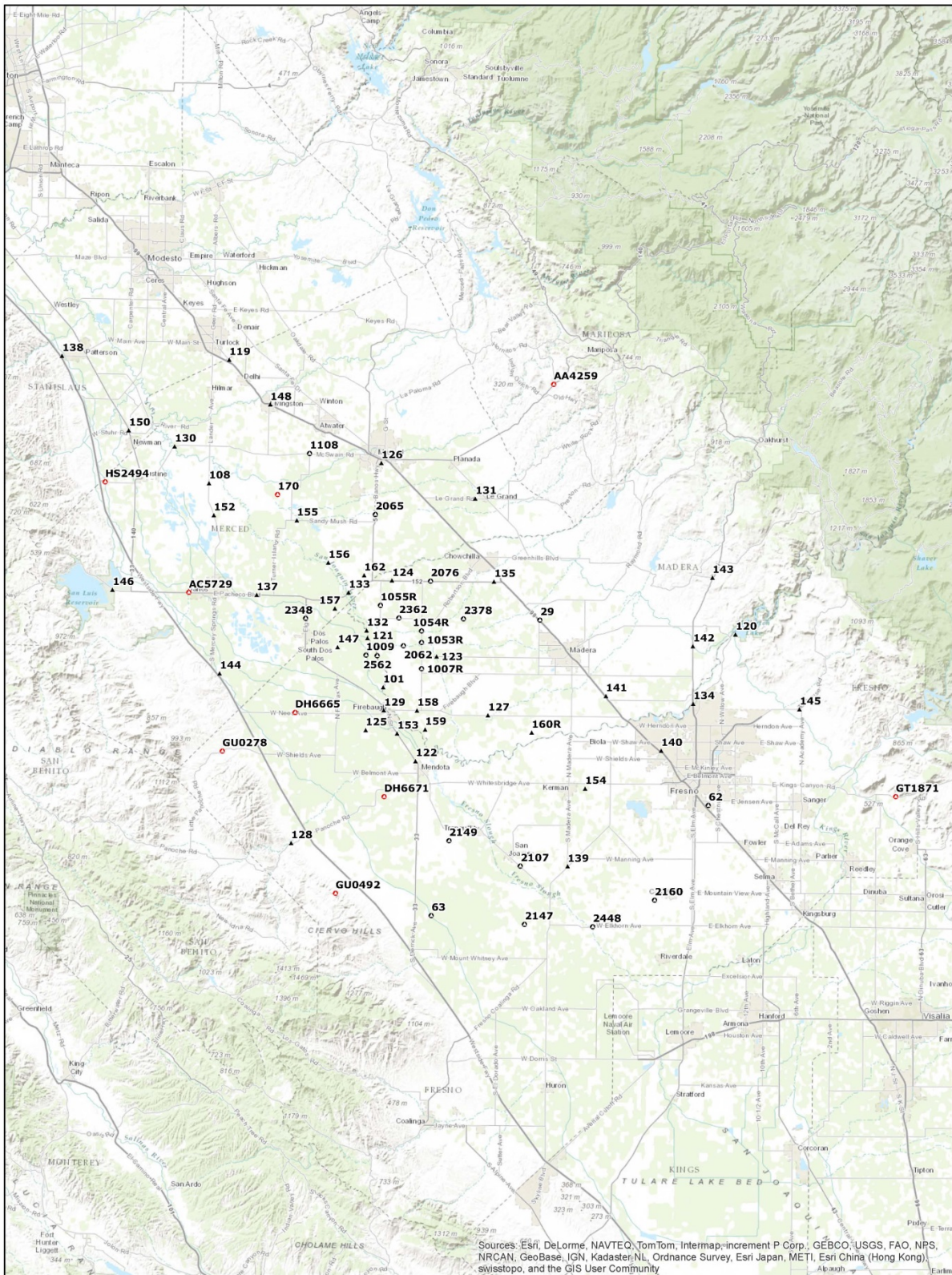
For more information: Questions about the SJRRP's field activities on public and private land should be directed to the SJRRP Landowner Coordinator using the information provided below. All other inquiries about the SJRRP should be directed to the Public Affairs Specialist.

Craig Moyle, Landowner Coordinator
Office (direct line): 916-418-8248
Mobile: 916-642-6383
Email: Craig.Moyle@stantec.com

Josh Newcom, Public Affairs Specialist
Office: 916-978-5508
Mobile: 916-208-6862
Email: jnewcom@usbr.gov

**Contact the SJRRP Hotline, 916-978-4398, or email sjrrp@restoresjr.net
if you see any problems or have any concerns.**

**For more information, please visit the SJRRP Web site at www.restoresjr.net.
Field Advisories for activities are available at
<http://www.restoresjr.net/get-involved/field-advisories/>**



Sources: Esri, DeLorme, NAVTEQ, TomTom, Intermap, increment P Corp., GEBCO, USGS, FAO, NPS, NRCAN, GeoBase, IGN, Kadaster/NL, Ordnance Survey, Esri Japan, METI, Esri China (Hong Kong), swisstopo, and the GIS User Community

GPS Coordinates

- ▲ GPS Point-December 2011
- GPS Point-added July 2012
- GPS Point-added December 2013



RECLAMATION
Managing Water in the West

**Reclamation Subsidence
GPS Stations**



Subsidence rates calculated by comparing survey values at GPS Stations for the dates specified in the legend.