

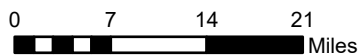
**Subsidence Rates (feet/year)**

December 2011 to December 2019

- 0 - 0.15
- 0.15 - 0
- 0.3 - -0.15
- 0.45 - -0.3
- 0.6 - -0.45
- 0.75 - -0.6

**Subsidence Monitoring Points**

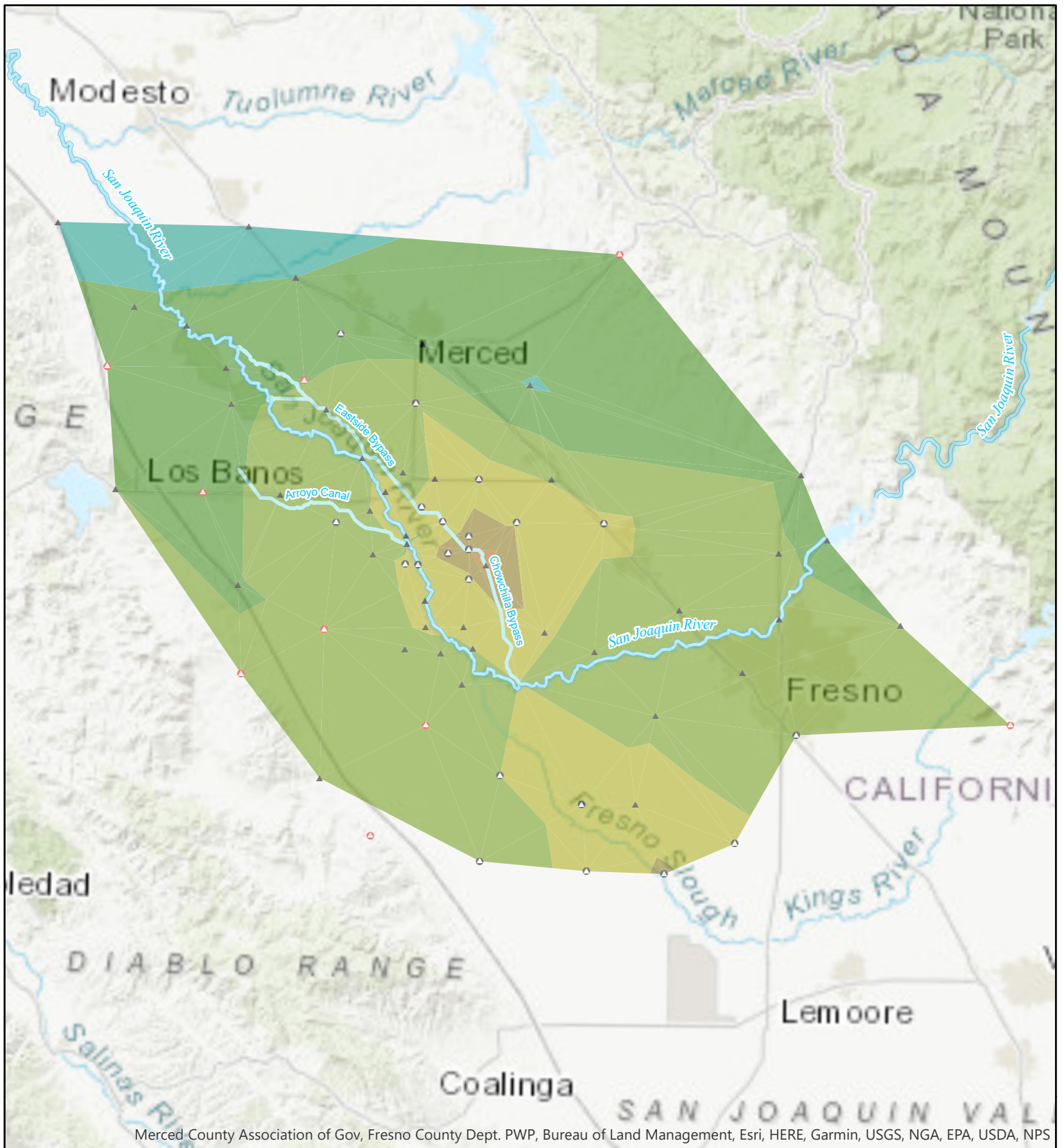
- ▲ December 2011
- Added July 2012
- Added December 2013



**RECLAMATION**  
*Managing Water in the West*

**Central Valley Subsidence  
Annual Rates  
December 2011 to December 2019**

Subsidence rates calculated by comparing survey values at monitoring points for the dates specified in the legend.

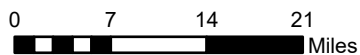


**Subsidence Rates (feet/year)**  
**December 2018 to December 2019**

- 0.15 - 0.3
- 0 - 0.15
- 0.15 - 0
- 0.3 - -0.15
- 0.45 - -0.3
- 0.6 - -0.45
- 0.75 - -0.6

**Subsidence Monitoring Points**

- ▲ December 2011
- Added July 2012
- ◊ Added December 2013



**RECLAMATION**  
*Managing Water in the West*

**Central Valley Subsidence  
 Elevation Change From  
 December 2018 to December 2019**

Subsidence rates calculated by comparing survey values at monitoring points for the dates specified in the legend.