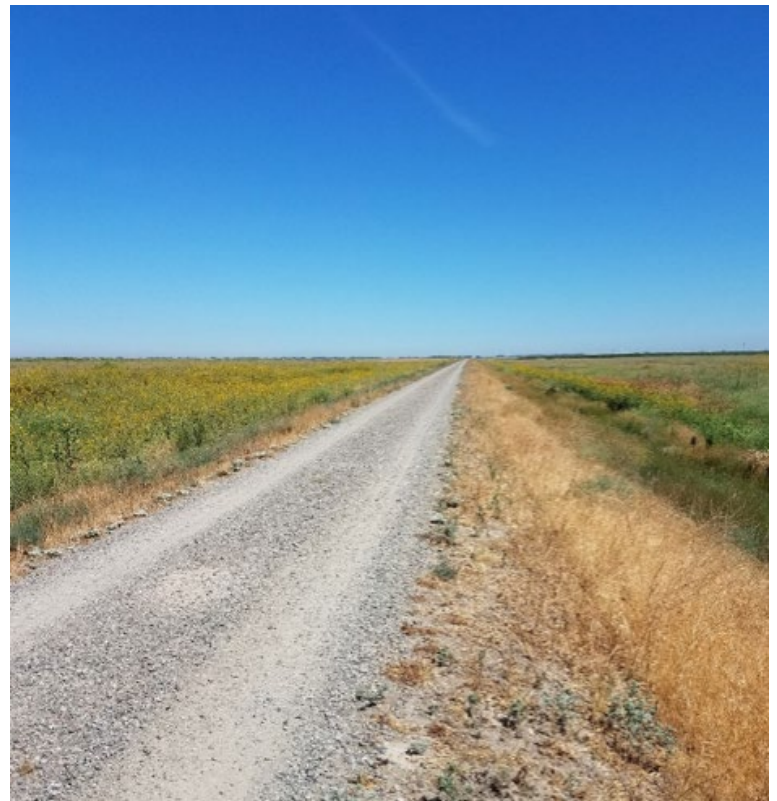


Field Activity Advisory Reach O Levee Improvements April 2020 – November 2020/2021*

The California Department of Water Resources, a partnering agency the San Joaquin River Restoration Program, is preparing to improve two-miles of levees within the Eastside Bypass in order to meet seepage and stability criteria required for future Restoration Flows. Sand or gravelly soils of higher permeability in the levee or levee foundation can transmit water via seepage during high-water stages. Cutoff walls are designed to reduce levee through-seepage and underseepage by providing a lens of low-permeability material through the higher permeability materials in the levee and levee foundation to essentially cut off the flow. The project also includes replacing six corrugated metal culverts/pipes that penetrate the levees with reinforced concrete pipe of the same size culverts/pipes.

Who: California Department of Water Resources

What: A total of approximately 2 miles of levees in the Eastside Bypass between Sand Slough and the Mariposa Bypass would be improved to meet levee seepage and stability criteria. Levee cut-off walls will be installed within three segments of a 3-mile reach of the existing east levee including approximately 1,500 linear feet of levee in Reach O-1, 5,900 linear feet of levee in Reach O-3, and 2,600 linear feet in Reach O-4 (see Figure A below). In addition, the project will replace six corrugated metal culverts/pipes that penetrate the levees with reinforced concrete pipe of the same size culverts/pipes.



A section of levee within the Eastside Bypass.

When: Pre-construction biological surveys and borrow excavation (Tri-colored blackbird, California Tiger Salamander, San Joaquin kit fox, burrowing owl, vegetation, American badger, bird of prey nesting, and other avian species surveys) will begin April 20, 2020. Fencing installation for California Tiger Salamander mitigation will take place May 18, 2020. Project construction will begin June 1, 2020 with construction completion anticipated by November 1, 2020. **Construction completion date could move to November 1, 2021 if contractor unable to complete work before start of migratory bird season.*

Where: Eastside Bypass adjacent to Reach 5 of the San Joaquin River Restoration Area (see Figure A below)

Questions about the project or the SJRRP should be directed to:

Josh Newcom

Public Affairs Specialist

San Joaquin River Restoration Program

Phone: (916) 978-5508

Email: snewcom@usbr.gov

Contact the SJRRP Hotline, 916-978-4398, or email RestorationFlows@restoresjr.net if you see any problems or have any concerns.

For more information, please visit the SJRRP Web site at www.restoresjr.net or contact Josh Newcom, Public Affairs Specialist, at 916-978-5508. Field Advisories for activities are available at <http://restoresjr.net/get-involved/field-advisories/>

Figure A



Source: Esri, DigitalGlobe, GeoEye, Earthstar Geographics, CNES/Airbus DS, USDA, USGS, AeroGRID, IGN, and the GIS User Community