

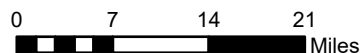
Subsidence Rates (feet/year)

December 2011 to December 2019

- 0 - 0.15
- 0.15 - 0
- 0.3 - -0.15
- 0.45 - -0.3
- 0.6 - -0.45

Subsidence Monitoring Points

- December 2011
- Added July 2012
- Added December 2013

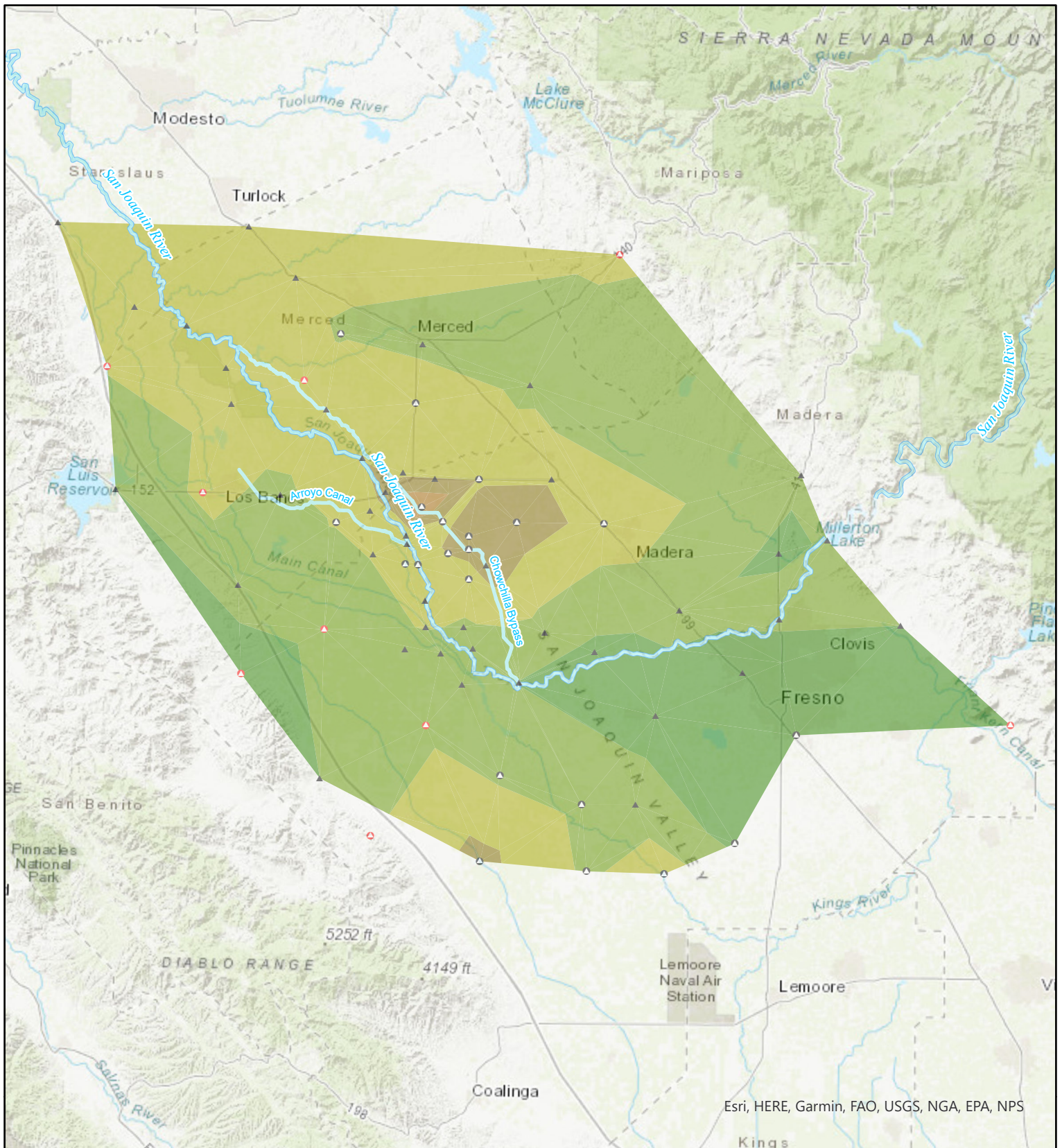


BUREAU OF RECLAMATION

**Central Valley Subsidence
Annual Rates**

December 2011 to December 2020

Subsidence rates calculated by comparing survey values at monitoring points for the dates specified in the legend.

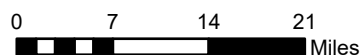


Subsidence Rates (feet/year)
December 2019 to December 2020

- 0 - 0.15
- 0.15 - 0
- 0.3 - -0.15
- 0.45 - -0.3
- 0.6 - -0.45

Subsidence Monitoring Points

- December 2011
- Added July 2012
- Added December 2013



BUREAU OF RECLAMATION

**Central Valley Subsidence
 Elevation Change From
 December 2019 to December 2020**

Subsidence rates calculated by comparing survey values at monitoring points for the dates specified in the legend.