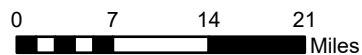


Subsidence Rates (feet/year)

- 0 to 0.15
- 0.15 to 0
- 0.3 to -0.15
- 0.45 to -0.3
- 0.6 to -0.45

Subsidence Monitoring Points

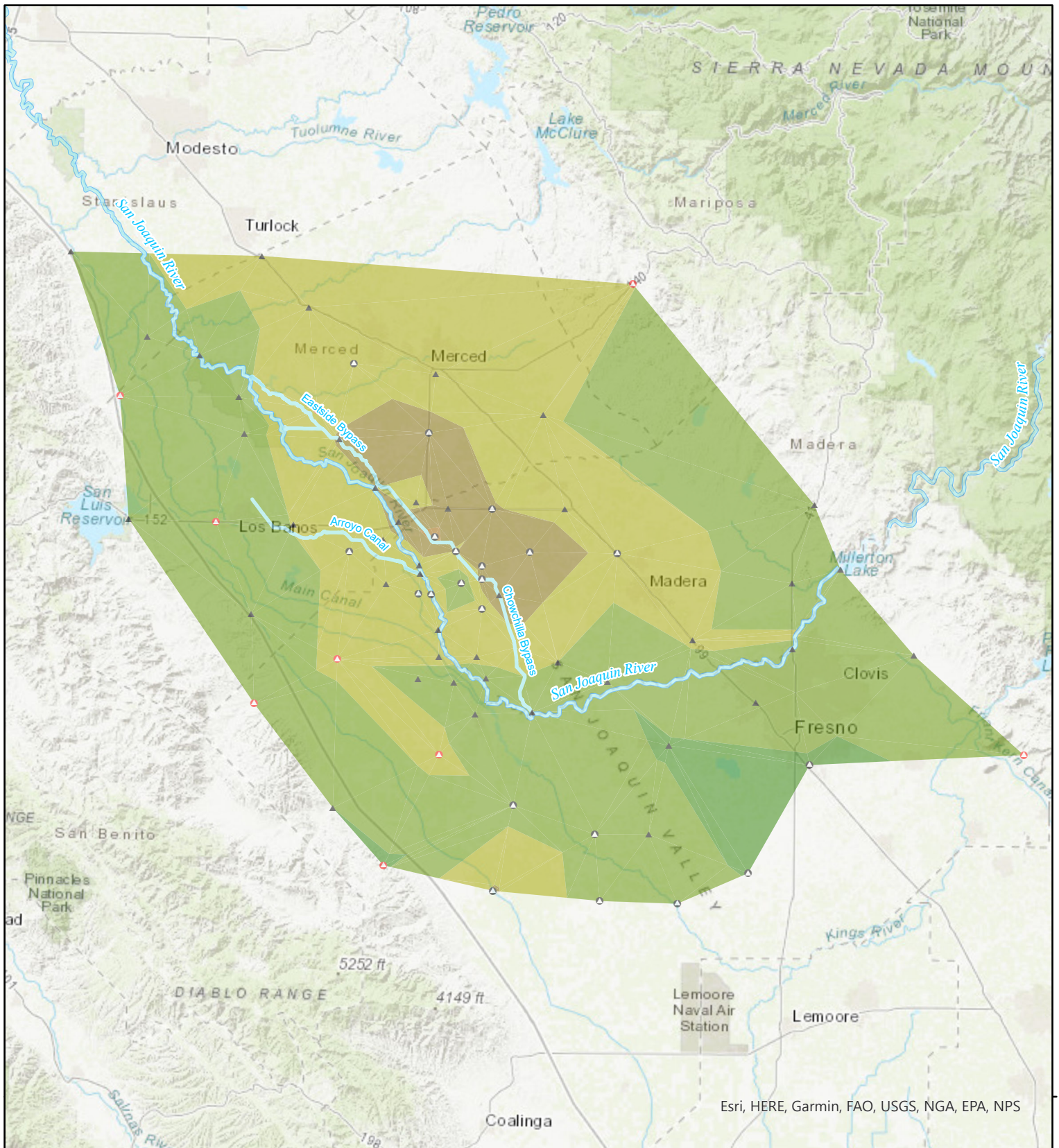
- December 2011
- Added July 2012
- Added December 2013



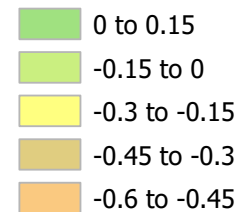
BUREAU OF RECLAMATION

**Central Valley Subsidence
Elevation Change From
July 2012 to July 2021**

Subsidence rates calculated by comparing survey values at monitoring points for the dates specified in the legend.

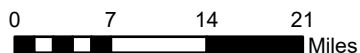


Subsidence Rates (feet/year)



Subsidence Monitoring Points

- ▲ December 2011
- Added July 2012
- ◻ Added December 2013



BUREAU OF RECLAMATION

**Central Valley Subsidence
Elevation Change From
July 2019 to July 2021**

Subsidence rates calculated by comparing survey values at monitoring points for the dates specified in the legend.