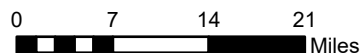


**Subsidence Rates (feet/year)
December 2011 to December 2022**

- 0 - 0.15
- 0.15 - 0
- 0.3 - -0.15
- 0.45 - -0.3
- 0.6 - -0.45

Subsidence Monitoring Points

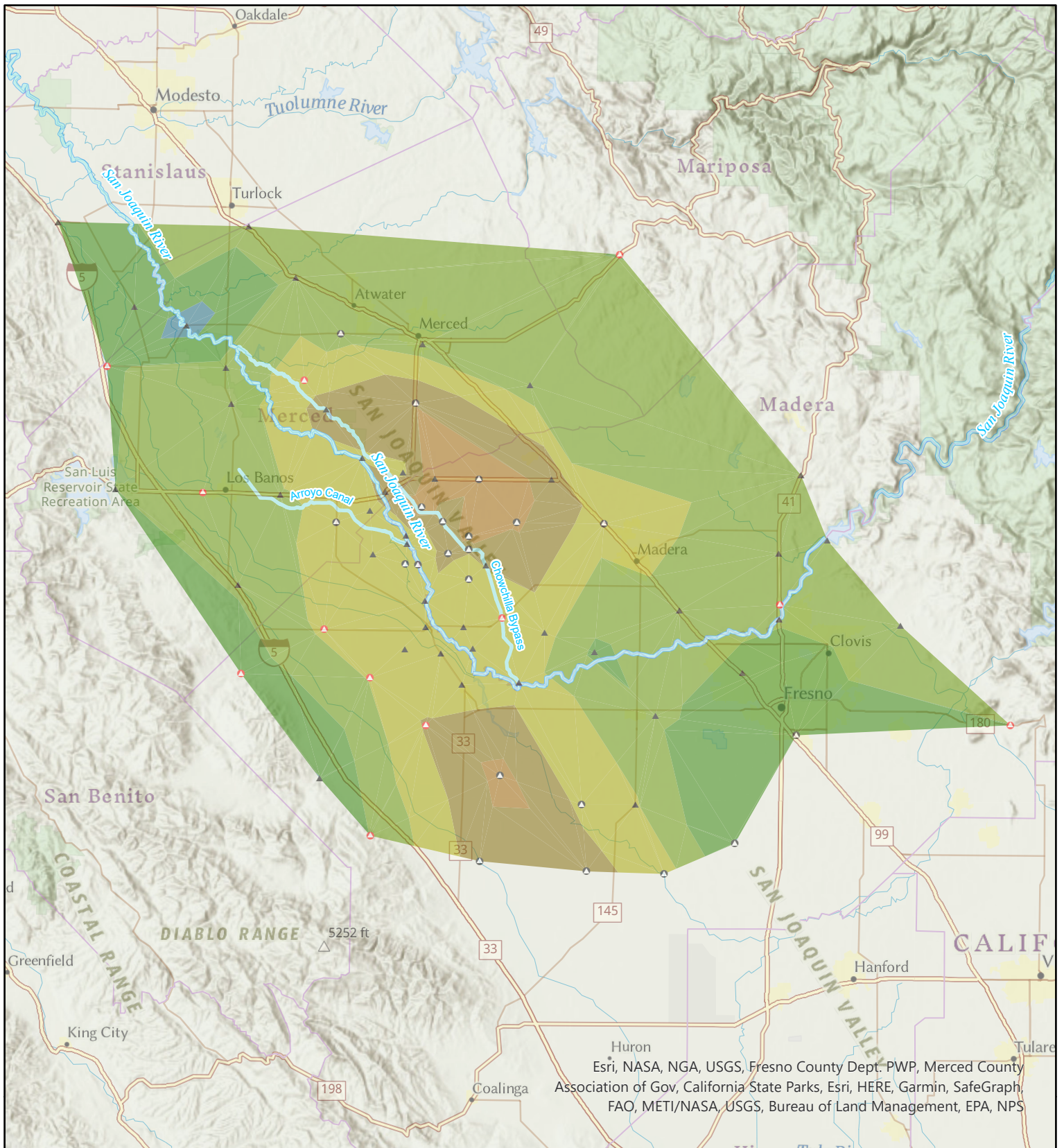
- December 2011
- Added July 2012
- Added December 2013



BUREAU OF RECLAMATION

**Central Valley Subsidence
Annual Rates
December 2011 to December 2022**

Subsidence rates calculated by comparing survey values at monitoring points for the dates specified in the legend.

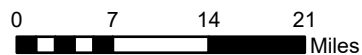


Subsidence Rates (feet/year)
December 2021 to December 2022

- 0.15 to 0.3
- 0 to 0.15
- 0.15 to 0
- 0.3 to -0.15
- 0.45 to -0.3
- 0.6 to -0.45
- 0.75 to -0.6

Subsidence Monitoring Points

- ▲ December 2011
- Added July 2012
- ◐ Added December 2013



BUREAU OF RECLAMATION

Central Valley Subsidence
Elevation Change From
December 2021 to December 2022

Subsidence rates calculated by comparing survey values at monitoring points for the dates specified in the legend.