

Assessment of Spring-run Chinook Salmon Spawning during 2021 within the San Joaquin River, California

Technical Report



This page is left blank intentionally.

Assessment of Spring-run Chinook Salmon Spawning during 2021 within the San Joaquin River, California

Prepared by:

Austin Demarest¹, Lauren Yamane¹, Andreas Raisch¹, Nicholas Fischer¹, Heather Swinney¹,
Erin Strange^{1*}, and Andy Shriver²

¹ U.S. Fish and Wildlife Service, 850 S. Guild Ave, Suite 105, Lodi California 95240

² California Department of Fish and Wildlife, 1234 E. Shaw Avenue, Fresno, California 93710

*To whom correspondence should be addressed: Erin_Strange@fws.gov



The preferred citation for this report is:

Demarest, A., L. Yamane, A. Raisch, N. Fischer, H. Swinney, E. Strange, and A. Shriver. 2023. Assessment of Spring-run Chinook Salmon Spawning during 2021 within the San Joaquin River, California. San Joaquin River Restoration Program Annual Technical Report. U.S. Fish and Wildlife Service, Lodi, California.

January 2023

Contents

Executive Summary	vii
1.0 Background	1
2.0 Redd Monitoring Survey.....	4
2.1 Introduction	4
2.2 Study Area	4
2.3 Study Specimens	5
2.4 Survey Effort.....	6
2.5 Survey Methods	7
2.6 Results.....	9
2.7 Discussion.....	11
2.8 Tables	12
2.9 Figures.....	13
3.0 Carcass Survey	22
3.1 Introduction	22
3.2 Methods	22
3.3 Results.....	24
3.4 Discussion.....	24
3.5 Tables	27
3.6 Figures.....	29
4.0 Emergence Trapping Survey.....	31
4.1 Introduction	31
4.2 Methods	31
4.3 Analysis.....	34
4.4 Results.....	36
4.5 Discussion.....	37
4.6 Tables	41
4.7 Figures.....	44
5.0 Conclusions and Recommendations	47
6.0 References.....	50

Abbreviations and Acronyms

AICc	Akaike Information Criterion with Correction for Finite Sample Sizes
AQI	Air Quality Index
ATU	Accumulated Thermal Unit
C	Celsius
CDEC	California Data Exchange Center
CDFW	California Department of Fish and Wildlife
cfs	Cubic Feet per Second
cm	Centimeter
cm ²	Square Centimeter
CWT	Coded Wire Tag
DO	Dissolved Oxygen
ETF	Egg-to-Fry
FDX	Full-Duplex
FL	Fork Length
FMP	Fisheries Management Plan of the San Joaquin River Restoration Program
FRFH	Feather River Fish Hatchery
ft	Feet
feet/sec	Feet/Second
FWQ	Friant Water Quality California Data Exchange Center Gage
GLM	Generalized Linear Model
GPS	Global Positioning System
H41	Highway 41 Bridge California Data Exchange Center Gage
HDX	Half-Duplex
kHz	Kilohertz
L	Liter
m	Meter
m/s	Meters per Second
ml	Milliliter
mg/L	Milligrams per Liter
mm	Millimeters
MAP	Monitoring and Analysis Plan
<i>n</i>	Sample Size
NMFS	National Marine Fisheries Service
NTU	Nephelometric Turbidity Unit
PIT	Passive Integrated Transponder
POHL	Post Orbital Hypural Length
rkm	River Kilometer
Reclamation	U.S. Bureau of Reclamation
SCARF	Salmon Conservation and Research Facility
Settlement	Stipulation of Settlement in Natural Resources Defense Council [NRDC], et al. v. Kirk Rodgers, et al. 2006.
SD	Standard Deviation

San Joaquin River Restoration Program

SJF	San Joaquin River below Friant California Data Exchange Center Gage
SJRRA	San Joaquin River Restoration Area
SJRRP	San Joaquin River Restoration Program
SRCS	Spring-run Chinook Salmon
USFWS	U.S. Fish and Wildlife Service

List of Tables

Table 1. Spring-run Chinook Salmon redd characteristics observed within Reach 1 of the San Joaquin River Restoration Area for sampling years 2020 and 2021. 12

Table 2. Summary of spring-run Chinook Salmon redd spawn site habitat classification (riffles, runs, glides, and pools) for the San Joaquin River Restoration Area in 2020 and 2021. 12

Table 3. Summary of count, sex, and spawn status for successfully released broodstock and trap and haul hatchery origin return adult spring-run Chinook Salmon, and subsequent carcasses recovered in Reach 1 of the San Joaquin River Restoration Area in 2021. One trap and haul hatchery origin return carcass was categorized with an unknown gender due to degradation. 27

Table 4. Summary of Coded Wire Tag (CWT) codes, hatchery origin, brood year, and sex of trap and haul hatchery return and broodstock spring-run Chinook Salmon carcasses recovered in 2021 in Reach 1 of the San Joaquin River Restoration Area. All carcasses recovered originated from the Feather River Fish Hatchery (FRFH) or Interim Salmon Conservation and Research Facility (SCARF) and then were released by San Joaquin River Restoration Program. 28

Table 5. The 2021 fry emergence start and end accumulated thermal units (ATU), emergence duration, count, incidental mortalities, size, and excavated egg count in Reach 1 of the San Joaquin River Restoration Area. Data is derived from point data measured during emergence trap checks. The location (rkm) of the trapped redd is provided. 41

Table 6. Mean environmental characteristics for each emergence trapped redd and overall means and standard deviations in the San Joaquin River Restoration Area, during 2021. Data is derived from point data measured during emergence trap checks..... 42

Table 7. Annual mean adult spring-run Chinook Salmon fecundity and egg-to-fry (ETF) survival estimates for 2021. Percent ETF survival was calculated using the estimated fecundity of broodstock at the Interim Salmon Conservation and Research Facility (SCARF) and returns to the Feather River Fish Hatchery (FRFH). See Table 5 for fry emergence counts, and note that fecundity values in row 1 were applied to estimate all redds' ETF survival rates. 43

List of Figures

Figure 1. The San Joaquin River Restoration Area (SJRRRA) within the San Joaquin River, California. The SJRRRA is separated into five reaches, which are delineated using labels and unique colored lines. The five reaches of the Restoration Area span from Friant Dam (rkm 431) to the confluence of the San Joaquin River with the Merced River (rkm 190). 13

Figure 2. The locations of trap and haul (April 5 through June 5, 2021) and broodstock (June 1 through October 1, 2021) spring-run Chinook Salmon adults release sites in Reach 1 of the San Joaquin River Restoration Area. Trap and haul release sites are labeled with purple crosses, the beginning and end of the survey reaches for redd and carcass monitoring are labeled with green stars, and California Data Exchange Center (CDEC, <http://cdec.water.ca.gov>) temperature gages are labeled with pink squares. Ancillary adult broodstock releases occurred at Friant Bridge in Reach 1..... 14

Figure 3. Plan view (A), longitudinal view (B), and corresponding measurements and features of a typical Chinook Salmon redd. Inspired by Burner 1951..... 15

Figure 4. The locations of spring-run Chinook Salmon redds in Reach 1 of the San Joaquin River Restoration Area (September 28 through November 15, 2021). The beginning and end of the survey reaches for redd and carcass monitoring are labeled with green stars, and California Data Exchange Center (CDEC, <http://cdec.water.ca.gov>) temperature gages are labeled with pink squares. Monitoring was conducted in three survey reaches: Friant Dam (rkm 431) to Lost Lake (rkm 426), Lost Lake (rkm 426) to Fresno County Sportsmen’s Club (rkm 414), and Fresno County Sportsmen's Club (rkm 414) to Milburn Ecological Unit (rkm 398; not pictured)..... 16

Figure 5. Summary of the total number of spring-run Chinook Salmon redds detected each survey day in Reach 1 of the San Joaquin River Restoration Area during 2021..... 17

Figure 6. Seven-day average of daily maximum temperatures (°C) recorded in the San Joaquin River downstream of Friant Dam (rkm 428 SJF and rkm 430 FWQ) and below Highway 41 (rkm 410; H41) from August 2021 to February 2022. Temperature data were obtained from the California Data Exchange Center (CDEC, <http://cdec.water.ca.gov>). The upper critical spawning temperature threshold for Chinook Salmon spawning is indicated by the red dashed line at 17 °C, and the upper critical incubation temperature threshold is denoted by the orange dashed line at 15.6 °C (SJRRP 2010). See text for more information..... 18

Figure 7. Mean daily river flow (cfs) recorded in the San Joaquin River near Friant Dam (rkm 430; SJF) and Highway 41 (rkm 410, H41) August 2021 through February 2022. Flow data were obtained from the California Data Exchange Center (CDEC, <http://cdec.water.ca.gov>). 19

Figure 8. Boxplot of redd areas (m²) for 2020 to 2021, with the horizontal black line showing the median individual redd area. The hinges include inter-quartile range, the lower whisker extends from the smallest value to the first quartile, the upper whisker extends from the third quartile to 1.5 times the inter-quartile range, and the dots above are outliers. There was no significant difference between years 2020 and 2021, as indicated by ns ($p = 0.252$). 20

Figure 9. Percent of redds within each facies category for 2020 ($n = 43$) and 2021 ($n=32$). 21

Figure 10. A recovered released broodstock spring-run Chinook Salmon carcass. The measuring tape and identification tag indicate recorded data..... 29

Figure 11. The locations of recovered adult spring-run Chinook Salmon carcasses (September 28 through November 24, 2021) and release sites for the adult spring-run Chinook Salmon broodstock (June, August, and October 2021) and trap and haul hatchery origin returns (April, May and June 2021) within the San Joaquin River Restoration Area. 30

Figure 12. Locations of emergence traps for spring-run Chinook Salmon in the San Joaquin River Restoration Area, 2021. The inset map indicates the emergence-trapped redds within the first reach of the SJRRA, and the pink boxes show California Data Exchange Center (CDEC) stations within the area..... 44

Figure 13. An emergence trap installed during 2019. The red arrow indicates flow direction. ... 45

Figure 14. Predicted values (black line) and 95 percent confidence intervals (gray shaded region) of emergence fry count based on dissolved oxygen (DO; mg/L) at the surface of the redd. Colored dots are observed values distinguished by survey year. Predictions of emergence at dissolved oxygen concentrations greater than approximately 10.75 mg/L (demarcated by the dashed red line) are based on limited observations and considered unreliable. 46

Executive Summary

Native fall-run and spring-run Chinook Salmon populations were extirpated from the San Joaquin River below Friant Dam to the confluence with the Merced River after Friant Dam construction was completed in the 1940s. A primary goal of the San Joaquin River Restoration Program (SJRRP) is to restore to this section of the river (hereafter the San Joaquin River Restoration Area; SJRRA) self-sustaining and naturally-reproducing populations of Chinook Salmon, with a particular focus on the reintroduction of spring-run Chinook Salmon (SRCS).

To aid reintroduction, hatchery-reared SRCS juveniles and broodstock adults, sourced from the Feather River Fish Hatchery, have been released into the SJRRA since 2014 and 2016, respectively. Currently, adult SRCS that migrate into the SJRRA in the spring, and consist of hatchery origin returns, are trapped and hauled to sites in Reach 1 of the SJRRA above existing passage barriers.

A critical need for the SJRRP is to determine if the reestablishing SRCS population can successfully complete important freshwater life stages within the SJRRA. To address this need, SJRRP biologists have monitored SRCS spawning activity, and evaluated the quality and quantity of available habitat for SRCS spawning and early life stage development (eggs and fry). Here, we report on spawning activity and egg-to-fry (ETF) survival of SRCS assessed through redd, carcass, and fry emergence trap monitoring surveys during the 2021 field season (September 2021 through February 2022).

Our surveys indicate that during 2021, 32 redds were constructed by adult SRCS as a result of the release of 50 released broodstock SRCS females and at least 42 female trap and haul SRCS (14 additional trap and haul individuals were of unknown sex). August temperatures in the spawning reach exceeded the critical spawning threshold and may have limited spawning to the upper area of the reach, where the majority of the redds were found.

Physical characteristics and pre-redd substrate composition assessments were generally consistent with natural SRCS redds reported in other studies, suggesting SRCS construct redds similar in size and select similar habitat in the SJRRA. Superimposition of SRCS redds over other SRCS redds was 6.3 percent, which is less than the SJRRP population objective threshold of 10 percent.

Mean size of measured redds in 2021 was similar to that of 2020 redds. Prespawn mortality based on 9 observed female broodstock carcasses and 7 observed trap and haul hatchery origin return female carcasses collected during 2021 met SJRRP's population objective threshold of less than 15 percent for broodstock but not for trap and haul origin return females.

Based on seven monitored emergence traps, we observed a mean of 479 SRCS fry per redd. The estimated ETF survival per redd for 2021 ranged from 0 percent and 58.8 percent (using the average SCARF broodstock fecundity), and from 0 to 28.5 percent (using the average FRFH fecundity). While dissolved oxygen below approximately 10 mg/L measured near individual redds may negatively affect fry emergence, more data across a range of near-redd dissolved oxygen values and from dissolved oxygen measured within the redd incubation habitat are needed.

Based on these results, we recommend that the SJRRP continue SRCS redd, adult carcass, and fry emergence surveys. Additional efforts to distinguish redds created by broodstock and trap and haul hatchery returns will help identify potential differences in ETF survival between groups of spawners. These additional studies will provide invaluable information to determine habitat restoration requirements for the successful reestablishment of SRCS within the San Joaquin River.

Disclaimer: Any use of trade, firm, or product names is for descriptive purposes only and does not imply endorsement by the U.S. Government or State of California.

1.0 Background

Historically, the main-stem San Joaquin River and upper watershed tributaries annually produced up to approximately 500,000 spring-run, fall-run, and late fall-run Chinook Salmon (*Oncorhynchus tshawytscha*) and supported the southernmost spring-run populations in North America (Fry 1961; Fisher 1994; Yoshiyama et al. 2000). Salmon runs are distinguished by the time of year adults return to fresh water, the elevation and type of reaches used for spawning activity, the duration of juvenile residence period, and the time of juvenile emigration. Adult spring-run Chinook Salmon (SRCS) traditionally returned in the spring and used cold pools in higher elevations for summer holding followed by late summer/early fall spawning in upper tributary streams (Yoshiyama et al. 1998). Adult fall-run and late fall-run Chinook Salmon return in the fall and use lower elevation habitats near the valley floor for late fall/early winter spawning (Fisher 1994; Meyers 2019). After construction of Friant Dam, habitat for Chinook Salmon and other native fish has become degraded, dewatered, and fragmented due to increased groundwater pumping and water diversions (Fry 1961; Warner 1991; Yoshiyama et al. 2001). Along the San Joaquin River in the vicinity of Fresno, mining for aggregate within the channel and floodplains also left large, deep pits that provide suitable habitat for black basses (*Micropterus* spp.) and other predators of juvenile salmon (Williams 2006). The cumulative effects of these actions resulted in the rapid decline of Chinook Salmon runs within the San Joaquin River above the confluence of the Merced River and the extirpation of SRCS by 1950 and remaining runs shortly thereafter (Fry 1961; Fisher 1994; Yoshiyama et al. 2001; Williams 2006). Chinook Salmon still occur in the major tributaries of the lower San Joaquin River such as the Merced, Stanislaus, and Tuolumne Rivers, albeit at very reduced numbers compared to historical records (Yoshiyama et al. 2000).

In 2006, a Settlement (Natural Resources Defense Council [NRDC], et al. versus Kirk Rodgers, 2006) was reached between NRDC, Friant Water Users Authority, and the U.S. Departments of the Interior and Commerce to help develop and enact restoration and water management goals on the San Joaquin River below Friant Dam to the confluence of the Merced River (SJRRP 2010). These goals focus on restoring and maintaining natural fish populations in “good condition” in the San Joaquin River Restoration Area (SJRRRA) including naturally reproducing salmon and other native fish species. Interim Flow releases to support SJRRP began in 2009 and concluded in 2014, in conjunction with the start of Restoration Flows. However, it

wasn't until 2016 that the San Joaquin River between Friant Dam and the Merced River confluence was fully connected. Additionally, the Settlement established a water management goal to reduce and/or avoid the impact of adverse water supply on the Friant Division long-term contractors that may result from these Interim and Restoration Flows in the SJRRA. The San Joaquin River Restoration Program (SJRRP) was created to implement the Settlement, and has developed comprehensive plans and actions to achieve those goals. The SJRRP is a multiagency collaborative program between the U.S. Fish and Wildlife Service (USFWS), the U.S. Bureau of Reclamation (Reclamation), National Marine Fisheries Service (NMFS), the California Department of Fish and Wildlife (CDFW), and the California Department of Water Resources (DWR).

Fish passage barriers currently preclude upstream adult fish migration therefore, the SJRRP has implemented Adult Trap and Haul (hereafter referred to as "trap and haul") to capture and transport returning adult SRCS around instream barriers to be released in Reach 1 of the SJRRA. These efforts are anticipated to continue as necessary until in river fish passage structures are constructed and volitional passage is achieved and may also be necessary during critical years if fish passage structure prove ineffective during such conditions. These management actions were implemented after the SJRRP developed an experimental population of Chinook Salmon using broodstock from the Feather River Fish Hatchery (FRFH) to help recolonize SJRRA (SJRRP 2018). Ongoing habitat restoration efforts will support the recolonization of SRCS to the SJRRA; these efforts include annual releases of juvenile SRCS into the Restoration Area and releases of sexually mature adult broodstock SRCS from the Interim Salmon Conservation and Research Facility (SCARF) into Reach 1 spawning habitat, the most upstream area of the SJRRA (Figure 1). Ultimately, the goal of the SJRRP is to have a self-sustaining SRCS population that can move freely throughout the SJRRA.

The SJRRP Fisheries Management Plan (FMP) has established several criteria to guide fish and habitat restoration activities to achieve salmon population viability within the SJRRA (SJRRP 2010). A major component of data collection has focused on SRCS spawning success (i.e., production of offspring from spawning adults) of individuals and understanding the stressors influencing the population. One objective of the FMP, is that an in-river egg-to-fry (ETF) survival rate of ≥ 50 percent for SRCS is needed to achieve the SJRRP's population target. The FMP also identifies the need to monitor for superimposition among redds because it may reduce ETF survival and limit the ability for the SJRRP to reach salmon production goals. Superimposition

occurs when a female salmon selects nearly the same location to build a redd as that occupied by a preexisting redd and then scours and/or deposits substrate on the preexisting redd. Previous studies have shown that superimposition increases as the density of spawning female salmon increases and has been attributed to limited spawning habitat (McNeil 1964; Weeber et al. 2010). The FMP also includes a population objective to achieve an annual minimum of 500 naturally produced adult SRCS that spawn successfully. The annual redd, carcass, and emergence monitoring efforts described in this report will allow the SJRRP to evaluate spawning habitat suitability with biological metrics and assess population viability within the SJRRA.

2.0 Redd Monitoring Survey

2.1 Introduction

Redd surveys are typically used to assess Pacific salmonid (*Oncorhynchus* spp.) escapement, abundance, and spawn timing, and collect physical measurements of salmon nests (redds) (Gallagher et. al 2007). Redd surveys for SRCS in the SJRRA began in 2016 and have continued annually. The purpose of redd surveys within the SJRRA is to provide the SJRRP with information about reproductive behavior, spawn timing, habitat use, and availability for SRCS. Redd surveys were conducted in Reach 1 of the SJRRA in 2021 to address the following objectives during Chinook Salmon reintroduction:

- 1) Estimate SRCS natural origin returning (or alternatively, trap and haul hatchery origin returns, and/or released broodstock) spawner abundance within Reach 1 of the SJRRA.
- 2) Calculate redd size to determine the needed spawning habitat area.
- 3) Monitor the spatial and temporal distribution of SRCS spawning activity and redd production in Reach 1 of the SJRRA.
- 4) Document the habitat characteristics of spawning site selection.
- 5) Document the rate and type (deposition and/or scour) of SRCS redd superimposition.
- 6) Associate the origin of female SRCS (trap and haul hatchery origin returns, wild returns, or released broodstock) that construct each redd via acoustic detections and/or visual observations of Floy tag colors when possible.
- 7) Estimate the quality of spawning habitat in Reach 1 by documenting textural facies, fine sediment, and velocity directly upstream of natural redds.
- 8) Evaluate the temporal and spatial suitability of stream temperatures to support the spawning life stage of SRCS.

2.2 Study Area

The SJRRA is approximately 240 river kilometers (rkm) long and separated into five reaches beginning at Friant Dam and ending at the confluence of the Merced River (Figure 1). The SJRRA is located within the San Joaquin Valley and is characterized by a Mediterranean climate

with wet-cool winters and dry-hot summers (Null and Viers 2013). Historically, the San Joaquin River flowed from the high elevations of the Southern Sierra Nevada Mountain Range, meandered southwest until it reached the Central Valley, continued northwest to the Sacramento-San Joaquin Delta, and emptied into the Pacific Ocean (Galloway and Riley 1999). The San Joaquin Basin is dependent upon annual snowpack and the subsequent meltwater that replenishes Millerton Lake above Friant Dam.

However, extensive agricultural land use within the San Joaquin Valley has subjected the San Joaquin River Basin to water diversions, as well as large-scale groundwater and riparian pumping operations to support agriculture (Galloway and Riley 1999; Null and Viers 2013; Traum et al. 2014). Since the Settlement, the SJRRA has been reliant upon dedicated Restoration Flows from the water stored within Millerton Lake. Restoration flow volumes are determined by the Water Year type, the Restoration Administrator provides flow recommendations, and compliance requirements have been predetermined for holding contracts to maintain minimum flows at the downstream end (i.e., at Gravelly Ford) of Reach 1 (SJRRP 2017, Figure 1).

Historical spawning surveys and modeled in-river temperatures suggest suitable spawning habitat for Chinook Salmon is restricted to the first 8–11 kilometers of Reach 1 of the SJRRA (Gordon and Greimann 2015). Suitable and selected hydraulic conditions for spawning have thus far been found primarily in gravel and cobble-dominated substrates at depths of 1.5-2 feet (ft) and velocities of 1.5-2 feet/second (ft/sec). These results were based on modeled hydraulic conditions and mapped textural (substrate) facies, combined with observations of fall-run Chinook Salmon redds in Reach 1 (Gordon and Greimann 2015). Further assessment of redds selected for spawning is needed to provide estimates of the quantity and quality of suitable SRCS habitat. These estimates will help determine whether Reach 1 has habitat available to achieve SJRRP's spawning objectives during reintroduction. To address these needs, SRCS redd, carcass, and emergence surveys were conducted by the SJRRP on the San Joaquin River in Reach 1 of the SJRRA from below Friant Dam (rkm 431) to the Milburn Ecological Unit (rkm 398; Figure 2).

2.3 Study Specimens

In 2021, the SJRRP studied the spawning activity of trap and haul SRCS and released ancillary adult broodstock SRCS in Reach 1. For visible distinction, trap and haul as well as broodstock released adults were externally tagged sub-dermally with uniquely colored and

individually numbered Hallprint plastic tipped dart fish tags (Hallprint Fish Tags Inc., Australia) on the dorsal fin insertion. The colors of Dart Tags attached to released trap and haul SRCS were distinct, which helped denote release time and distinguish trap and haul SRCS from released adult broodstock released adult SRCS.

In addition to the external tags, Vemco (Innovasea Inc., Bedford, Nova Scotia, Canada) V9 69 kHz acoustic tags and Oregon RFID 23-millimeter (mm) half-duplex (HDX) passive integrated transponder (PIT) tags were implanted intra-gastrically with a balling gun. All trap and haul adults were implanted with acoustic and PIT tags. COVID restrictions prevented the SJRRP from acoustic or HDX PIT tagging released adult broodstock SRCS. Acoustic tags were injected with the intent to track behavior and habitat selection throughout spawning season. In concert with acoustic tags, HDX tags were injected with the intent to link individual fish to their successive redd as part of a separate effort by CDFW (Shriver 2015; Shriver 2017). All released broodstock were previously tagged as juveniles with full-duplex (FDX) PIT tags to identify individuals while being reared at the Interim SCARF until they were released into the Restoration Area. After spawning the FDX tags aided in identifying carcasses released as broodstock, whereas HDX and acoustic tags aided in identifying carcasses that were trap and haul returns.

Trap and haul SRCS in 2021 consisted of 35 female, 29 male, and 10 unknown sex that were captured in Reach 5 of SJRRA and transported upstream for successful release into Reach 1 (Sutphin and Root 2021). The trap and haul fish were released in four different locations, with each location moving further upstream due to increasing temperatures. The first 40 trap and haul adults were released at California State Route 99 release location (rkm 391). The next 9 trap and haul adults were released at Camp Pashayan, immediately upstream of California State Route 99 (rkm 392). The next 8 fish were released at Scout Island (rkm 402). The remaining 17 were released at Owl Hollow (rkm 416). Broodstock releases occurred three times in 2021 at Friant Bridge (rkm 429): the first release consisted of 30 females and 40 males, the second in August consisted of 20 females and 60 males, and the third in October consisted of 0 females and 50 males (see Table 3 in Carcass Survey; Figure 2).

2.4 Survey Effort

Redd surveys were conducted August 31, and continued through November 24, 2021. Surveys were restricted to daylight hours and weather conditions favorable for detecting redds

(e.g., without heavy rain). The survey area was divided into three sections to ensure complete spatial coverage from Friant Dam (rkm 431) to Lost Lake (rkm 426), Lost Lake to the Fresno County Sportsmen's Club (rkm 413), and the Fresno County Sportsmen's Club to the Milburn Ecological Unit (rkm 398; Figures 2 and 3). Surveys generally occurred one time per week during the study period.

The surveys conducted from a drift boat and kayaks followed the protocols of previous sampling years; those protocols are as follows. The drift boat enabled surveys of the thalweg and deep pools; likewise, kayaks were used to help staff survey channel margins and other areas inaccessible to the drift boat. Kayakers paddled ahead and surveyed riffles before guiding the drift boat downstream to minimize disturbance of new and/or ongoing spawning activity. Kayakers traversed upstream of each riffle for an initial inspection of spawning activity before proceeding to the shoreline to walk down the riffle with their kayak for a more thorough visual inspection of spawning activity, areas freshly cleared of periphyton, redds, and carcasses. Areas cleared of periphyton were further investigated to determine if clearing was caused by potential spawning activity or water hydraulics. These areas were documented and observed during successive weeks to see if a pit and defined tailspill developed. Redds were processed according to the methods described in the methods section below.

2.5 Survey Methods

Redds were identified based on freshly exposed substrate cleared of periphyton, a substrate depression into the streambed (pit), and a downstream mound of coarse substrate (tailspill). Redds were given a redd identification number and labeled sequentially to help denote the order of discovery and to estimate emergence timing. Substrate areas that were cleared of periphyton but lacking a tailspill were classified as a test redd and given a test redd identification number. Test redds were monitored during subsequent survey weeks for potential development into a completed redd. If a test redd developed further and had both a pit and a tailspill, it was then given the next sequential redd identification number. After redds were assigned an identification number, GPS location was recorded, a cattle ear tag fastened to a weight was placed adjacent to the pit towards river center and flagging with the redd identification number was attached to riparian vegetation on the nearest shoreline perpendicular to flow. These markers were used to help locate surveyed redds each week to monitor how they changed throughout the survey period, identify

superimposition, and locate suitable redds for emergence trap installation. Locations were recorded with an EOS Arrow-Gold GNS sub-centimeter GPS paired with an iPhone 7 and plotted in real time in ArcGIS Field Maps Application. Velocity and depth measurements were taken with an OTT MF Pro Flow meter and top set rod. Pre-redd depth and velocity measurements were taken from undisturbed substrate upstream of the redd pit. Mean water column velocity was measured 60 percent below the surface of the water if water depth was < 1 meter (m). If water depth was > 1 m, flow measurements were recorded at both 20 percent and 80 percent below the water surface and averaged. Pit depth measurements were taken at the deepest part of the pit (pit depth) and the tailspill minimum depth was taken at the shallowest point of the tailspill (tailspill crest). Measurements of pit and tailspill length and width and measurements of the distance between tailspill and crest were taken to the nearest 0.01 m (Figure 3).

Habitat characteristics for each redd was also recorded and included channel type, channel position, and habitat type. Channel type was categorized as either main channel or side channel, where the main channel was defined as the cross-section of the wetted river channel that contained the majority of the flow (i.e., greater than 50 percent of the flow) and side channel contained the minority (i.e., less than 50 percent of flow). Channel position while facing downstream was used to document where each redd was within the river (river right, river left, or river center). Habitat type was categorized based upon depth, velocity, and water surface turbulence and consisted of five categories (glide, riffle, run, pool, and backwater). Glides were shallow slow flowing (< 0.5 m depth, < 0.3 meters/second [m/s]) stretches with little or no surface turbulence, riffles were shallow fast (< 0.5 m depth, ≥ 0.3 m/s) reaches, with turbulent water and some partially exposed substrate, runs were deep and fast (≥ 0.5 m depth, ≥ 0.3 m/s) flowing reaches with little surface agitation and no major flow obstructions, pools were deep (≥ 1 m depth), low-velocity areas of water (< 0.3 m/s) with a smooth surface, and backwaters were distinct out-pockets along river margins that were relatively shallow (< 0.5 m depth) and had slow moving, or stagnant water (< 0.3 m/s).

Redds were assigned an age to monitor degradation and superimposition. The remaining redds were aged weekly on a 1–5 scale. An Age 1 redd had clean rocks with no defined pit or tailspill. This was considered a test area or a redd under construction. Age 2 redds were clearly visible with clean substrate and a well-defined pit and tailspill. Age 3 redds had aged substrate, flattened tailspill, fine sediment deposition in the pit, and/or algal growth. Age 4 were old and

difficult to discern, and Age 5 redds had no visible traces of a redd, only the marker denoted the location of a previously identified redd. Superimposed redds that had new substrate material in the redd area were documented as being impacted by deposition, whereas preexisting redd areas that had features excavated by a new spawning event were considered to have been scoured. If a preexisting redd experienced both, scour and deposition was recorded. After an observation of superimposition, redds were no longer aged for degradation because superimposition inhibited the accuracy of correct aging, and in some cases tailspill location.

To document the streambed substrate in spawning areas selected by salmon, substrate composition and relative substrate size were visually assessed in a 1-m² area directly upstream of incision of the pit of each redd (pre-redd area). Textural facies in pre-redd areas were classified according to methods by Buffington and Montgomery (1999). The percent of fine sediment (sand, ≤ 2.0 mm) in the pre-redd area was recorded. However, if the composition of sand in the samples collected were < 5 percent, then percent of fine sediment was simply recorded as < 5 percent. Classification was made according to the proportional composition of the grain sizes (i.e., sand [< 2.0 mm], gravel [$2.0 - 63$ mm], and/or cobble [> 63 mm]) in ascending order from least abundant to most abundant. For example, if an area had 15 percent sand, 30 percent cobble, and 55 percent gravel it would be recorded as SCG, where S is sand, C is cobble, and G is gravel. Grain size was confirmed with a gravelometer by measuring the b-axis, where the a-axis is the longest length measurement of each grain and the b-axis is the second longest length (i.e., intermediate axis). If a grain size comprised ≤ 5 percent, it was omitted from the textural facies classification (i.e., CG). If the most dominant grain size was ≥ 90 percent, only this dominant grain size was included (i.e., G).

2.6 Results

In 2021, 32 redds were identified and tracked. A total of 30 of these SRCS redds were measured throughout Reach 1 of the SJRRA from the 85 confirmed female SRCS that were released (50 broodstock and at least 35 trap and haul hatchery origin return). One of the two redds that were not measured was superimposed upon by another spawning female SRCS and the second was too deep to accurately measure (see Figure 4). In 2021, 30 redds were between Friant Dam (rkm 431) and Lost Lake (rkm 426), one redd was between Lost Lake and the Fresno County Sportsmen's Club (rkm 414), and one redd was between the Fresno County Sportsmen's Club and

the Milburn Ecological Unit (rkm 398) (Figure 4). SRCS redd distribution in 2021 was similar to previous years with the majority of redds created between Friant Dam and Lost Lake, with minimal redds discovered between Lost Lake and the Milburn Ecological Unit (Demarest et al. 2021). Spawning occurred from September 28 through December 15, 2021 (Figure 5). Similar to 2020, the temperature at the Highway 41 (H41) California Data Exchange Center Station (CDEC, <http://cdec.water.ca.gov>) was recorded above the upper critical spawning temperature (17 degrees Celsius [$^{\circ}\text{C}$]) until October 2, when temperatures declined. Temperatures again exceeded the upper critical spawning temperature from October 6 through October 8, 2021 (Figure 6) when they dropped below the threshold for the rest of the season. Water temperatures remained below the critical spawning temperature at Friant Water Quality (FWQ) and San Joaquin River Below Friant (SJF) throughout the observed spawning season. River flow was generally around 300 cfs until November 22 as recorded by CDEC gages at SJF and H41 but increased to between 600 to 700 cfs until February 2, 2021 (Figure 7).

Superimposition was evident at 2 of the 32 SRCS redds in 2021. Deposition was observed at one of the superimposed redds with substrate from a newly constructed redd deposited onto the pit or tailspill. The remaining redd had the pit or tailspill scoured by a newly constructed redd. Superimposition was only observed on 6.3 percent of redds in 2021, less than the SJRRP population objective threshold of 10 percent (2018). Mean redd area for the 30 measured redds constructed in 2021 was 4.0 m^2 with standard deviation of 5.2 m (Table 1). There were no significant differences in redd areas between 2020 and 2021 redds ($t = 0.673$, $df = 48.1$, $p = 0.252$; Figure 8). These 32 SRCS redds occupied an area of 121.1 m^2 in 2021.

In 2021, most spawning (50 percent) occurred where gravel was the dominant textural facie, similar to 2020 (Figure 9). However, 43.2 percent of redds were constructed where cobble was the most dominant textural facie, slightly higher than 2020, where 34.1 percent of redds were constructed in areas where cobble was the most dominant. Spawning in habitats with a higher surface sand content was less prevalent in 2021 (6.7 percent) than in 2020 (15.9 percent) (Figure 9). Redd habitat selection during 2021 was only within riffles (56.3 percent) and runs (43.8 percent) (Table 2). The number of redds observed in riffles during 2021 was much greater than that detected in 2020 (Table 2).

2.7 Discussion

For the 2021 field season, the redd survey documented 32 SRCS redds, with most redds observed between Friant Dam and Lost Lake. These 32 redds were created from 274 released adult SRCS. The SJRRP Fisheries Framework (2018) sets a population objective of 2,500 hatchery origin SRCS spawners and 500 natural origin SRCS spawners in the SJRRA during the Recolonization Phase. Once major passage impediments are remedied enabling volitional passage of SRCS, this objective may become more achievable. Temperatures that exceeded the upper critical spawning threshold until October 8 around Highway 41 may have limited spawning to areas upstream of this site; in 2021, 93.8 percent of redds were found between Friant Dam and Lost Lake.

Physical characteristics and pre-redd substrate composition assessments were generally consistent with natural SRCS redds observed in Clear Creek and Butte Creek, California, in the Sacramento River Basin (Giovannetti and Brown 2008; McReynolds et. al. 2005). Although, 2021 spawners built proportionally fewer redds in sand-dominant substrates and more redds in gravel-dominant substrates than their 2020 counterparts. The selection of less sandy spawning sites and a lower redd superimposition rate for 2021 versus 2020 redds may indicate less competition for higher quality habitat in 2021. Another possibility that we cannot preclude given the scope of this study is that there was less available sandy habitat in 2021 than in 2020.

Mean size of measured redds in 2021 was not significantly different than redds observed in 2020. Unfortunately, we had difficulty determining the spawner identity (i.e., trap and haul hatchery origin return versus released broodstock) for each redd in 2021. Several redds were constructed close together near Friant Dam, prohibiting the identification of each female SRCS and its associated redd in Reach 1. The Hallprint plastic tipped dart fish tags had significant algal growth, preventing clear observation and distinction of the unique tag colors. In addition, COVID measures prevented adequate tagging of released broodstock spawners, but in the future, increased tagging efforts could help tie spawner groups to individual redds.

To accomplish SJRRP goals, continued investigation of spawning activity is crucial to identify which physical and environmental variables affect spawning site selection. Managing Reach 1 water temperatures through Restoration Flows and cold-water pool releases, coupled with gravel augmentation, may be the first steps needed to help create more suitable spawning habitat in support of SRCS natural spawner abundance and juvenile production goals.

2.8 Tables

Table 1. Spring-run Chinook Salmon redd characteristics observed within Reach 1 of the San Joaquin River Restoration Area for sampling years 2020 and 2021.

Variable	2020			2021		
	<i>n</i> =43 Mean	SD	Range	<i>n</i> =30 Mean	SD	Range
Redd Area (m ²)	4.8	2.0	0.9-19.7	4.0	5.2	0.5-29.0
Tailspill length(m)	1.6	0.7	0.6-3.8	1.7	0.8	0.7-3.7
Tailspill Width(m)	1.3	0.5	0.5-2.9	1.1	0.5	0.5-3.1
Tailspill Area (m ²)	2.4	2.0	0.5-11.0	2.2	2.2	0.4-11.5
Pit Length(m)	1.3	0.5	0.6-2.8	1.2	0.8	0.4-4.8
Pit Width (m)	1.6	0.7	0.6-3.3	1.2	0.7	0.4-3.7
Pit Area (m ²)	2.4	1.9	0.4-8.7	1.9	3.1	0.2-17.5
Pit Excavation Depth (m)	0.1	0.1	0.0-0.3	0.1	0.1	0.0-0.4
Depth Upstream Pre-Redd (m)	0.6	0.2	0.2-1.0	0.5	0.2	0.2-0.8
Pre-Redd Velocity (m/s ²)	0.6	0.2	0.2-1.1	0.5	0.2	0.2-1.0

Table 2. Summary of spring-run Chinook Salmon redd spawn site habitat classification (riffles, runs, glides, and pools) for the San Joaquin River Restoration Area in 2020 and 2021.

	2020	2021
Redd Total	73	32
Riffles	9.6%	56.25%
Runs	47.9%	43.75%
Glides	41.1%	0%
Pools	1.4%	0%
Undocumented	-	-

2.9 Figures

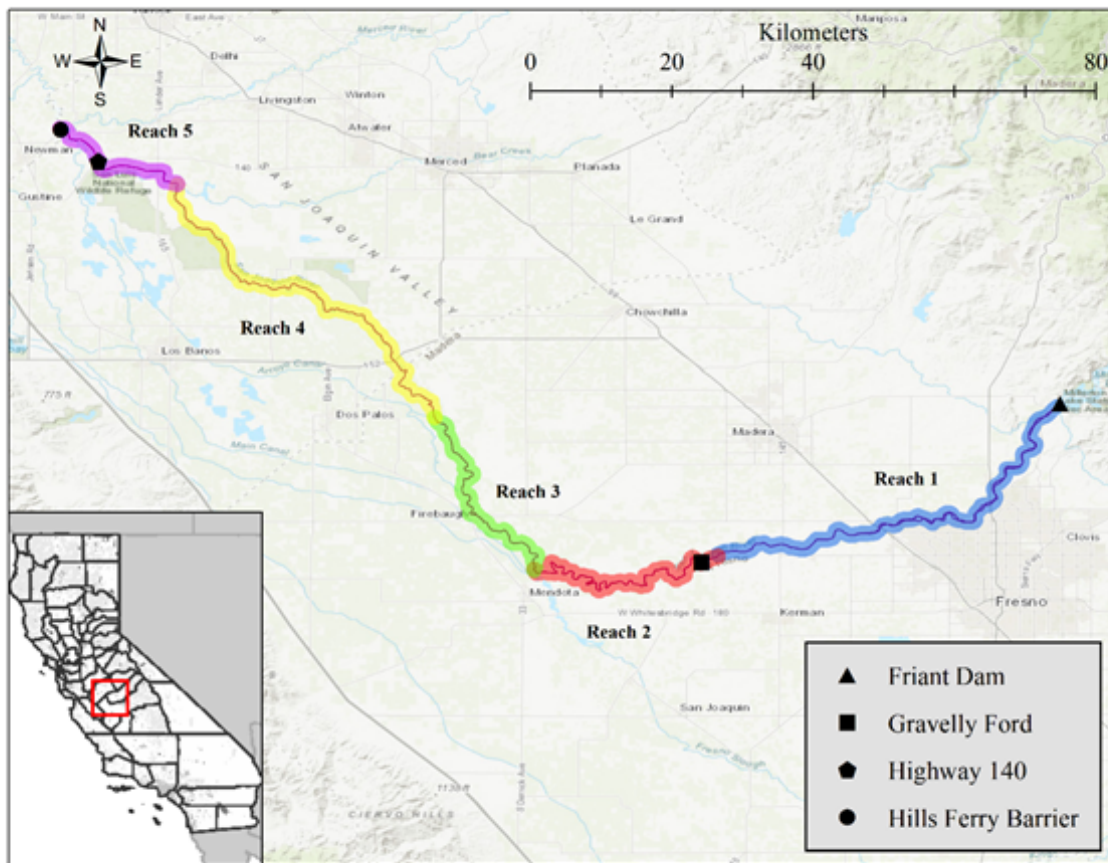


Figure 1. The San Joaquin River Restoration Area (SJRR) within the San Joaquin River, California. The SJRR is separated into five reaches, which are delineated using labels and unique colored lines. The five reaches of the Restoration Area span from Friant Dam (rkm 431) to the confluence of the San Joaquin River with the Merced River (rkm 190).

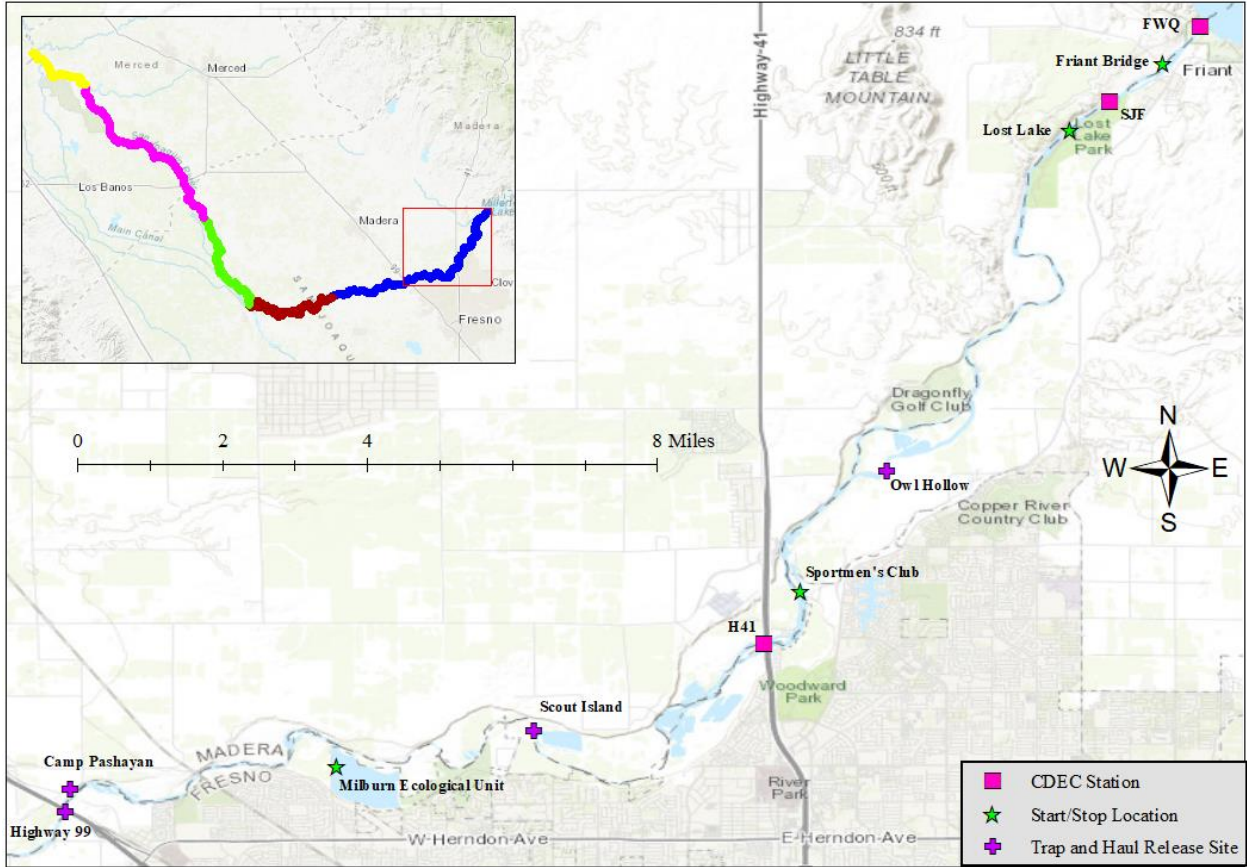


Figure 2. The locations of trap and haul (April 5 through June 5, 2021) and broodstock (June 1 through October 1, 2021) spring-run Chinook Salmon adults release sites in Reach 1 of the San Joaquin River Restoration Area. Trap and haul release sites are labeled with purple crosses, the beginning and end of the survey reaches for redd and carcass monitoring are labeled with green stars, and California Data Exchange Center (CDEC, <http://cdec.water.ca.gov>) temperature gages are labeled with pink squares. Ancillary adult broodstock releases occurred at Friant Bridge in Reach 1.

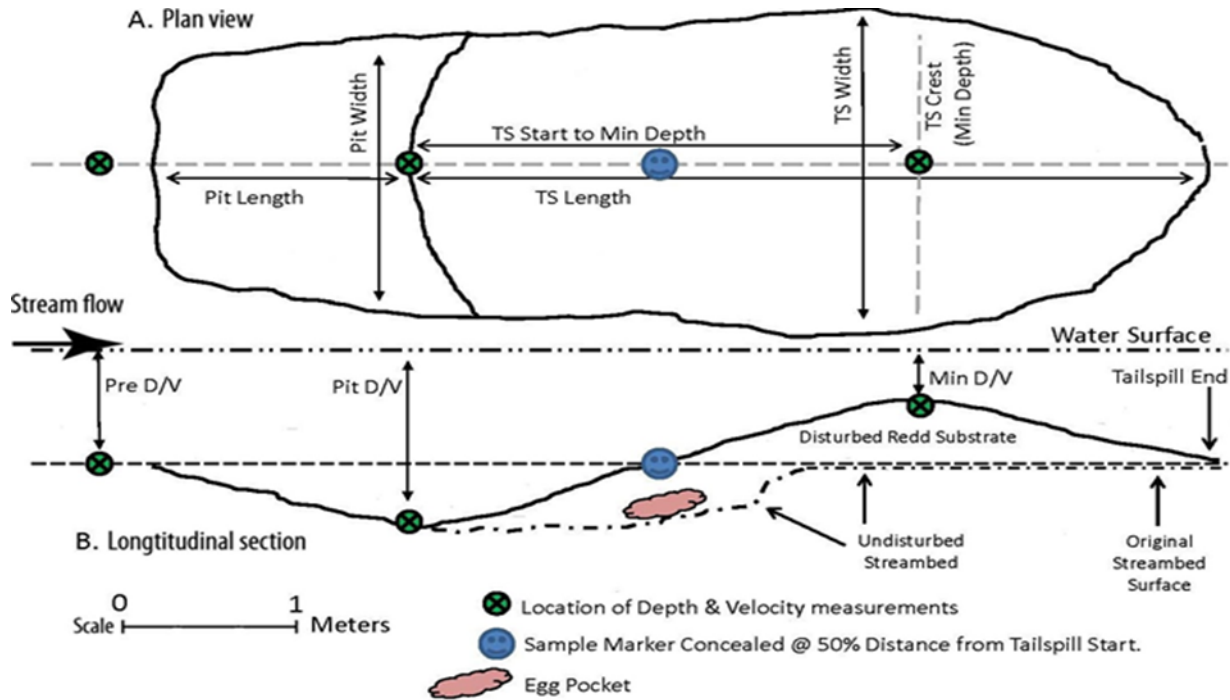


Figure 3. Plan view (A), longitudinal view (B), and corresponding measurements and features of a typical Chinook Salmon redd. Inspired by Burner 1951.

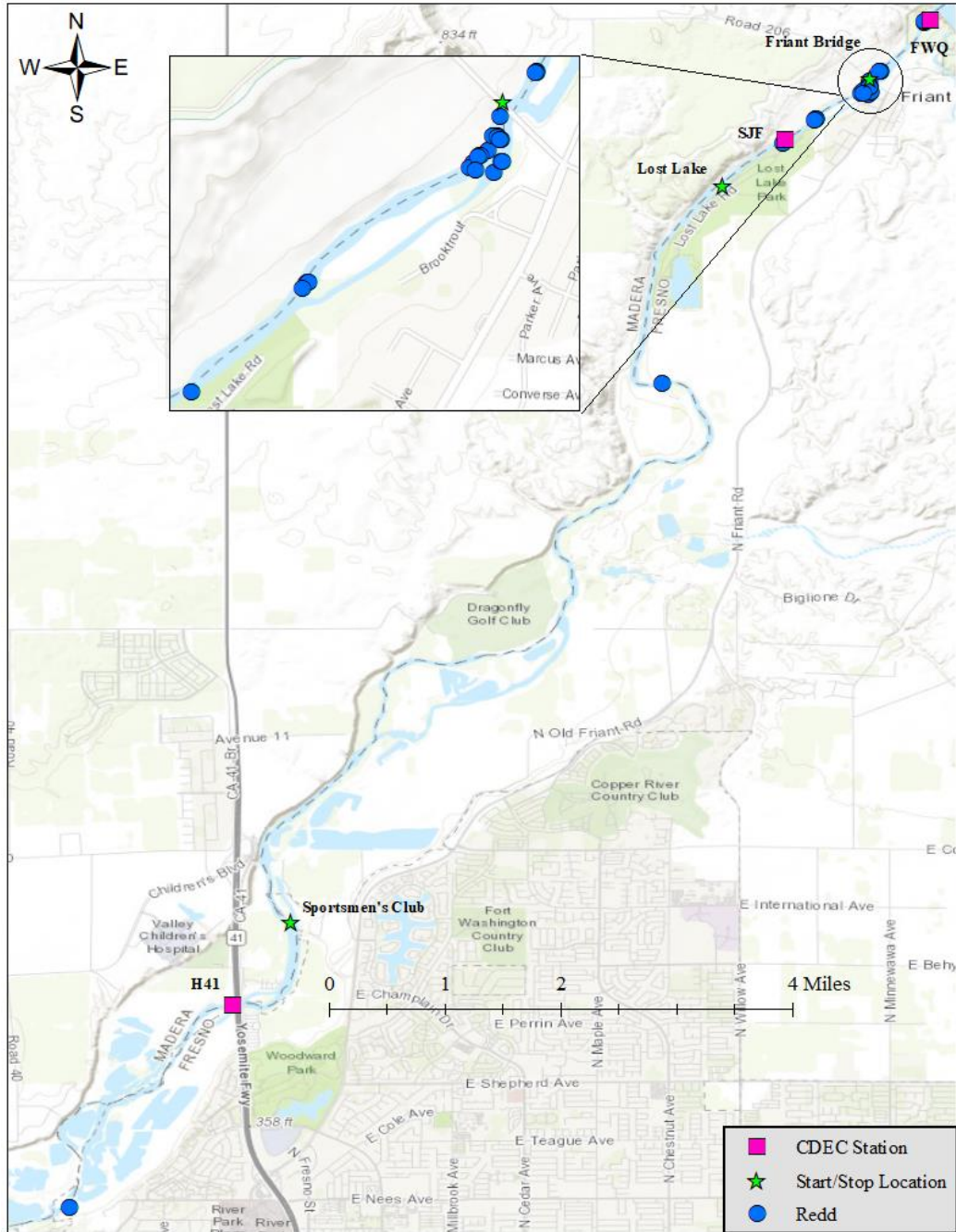


Figure 4. The locations of spring-run Chinook Salmon redds in Reach 1 of the San Joaquin River Restoration Area (September 28 through November 15, 2021). The beginning and end of the survey reaches for redd and carcass monitoring are labeled with green stars, and California Data Exchange Center (CDEC, <http://cdec.water.ca.gov>) temperature gages are labeled with pink squares. Monitoring was conducted in three survey reaches: Friant Dam (rkm 431) to Lost Lake (rkm 426), Lost Lake (rkm 426) to Fresno County Sportsmen’s Club (rkm 414), and Fresno County Sportsmen's Club (rkm 414) to Milburn Ecological Unit (rkm 398; not pictured).

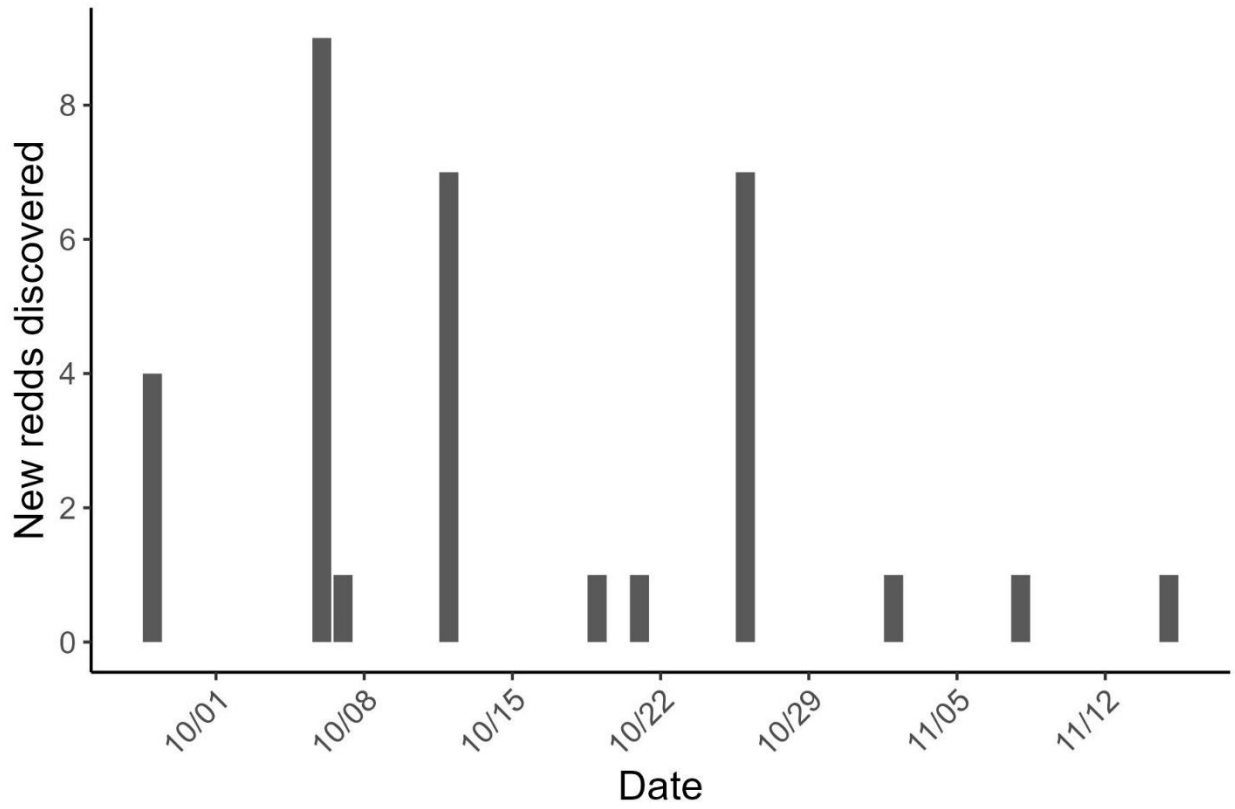


Figure 5. Summary of the total number of spring-run Chinook Salmon redds detected each survey day in Reach 1 of the San Joaquin River Restoration Area during 2021.

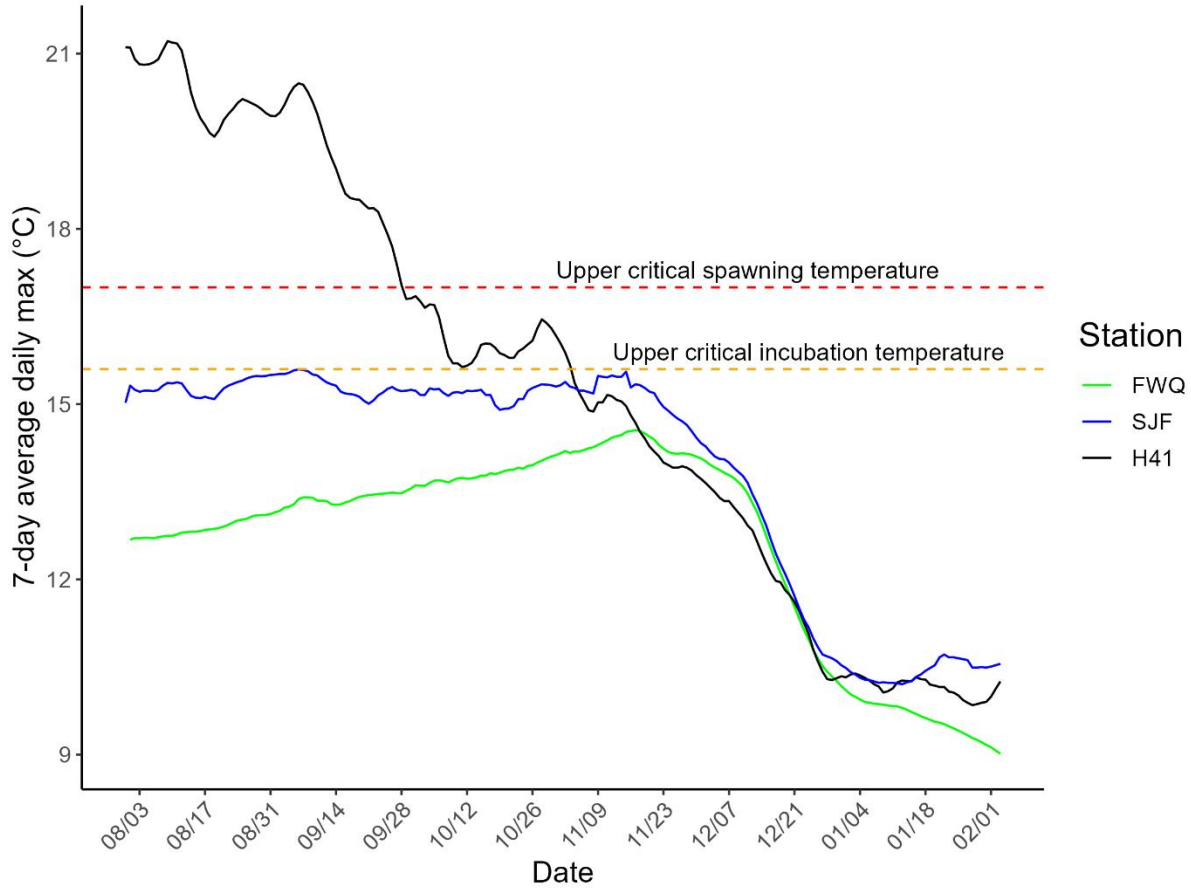


Figure 6. Seven-day average of daily maximum temperatures (°C) recorded in the San Joaquin River downstream of Friant Dam (rkm 428 SJF and rkm 430 FWQ) and below Highway 41 (rkm 410; H41) from August 2021 to February 2022. Temperature data were obtained from the California Data Exchange Center (CDEC, <http://cdec.water.ca.gov>). The upper critical spawning temperature threshold for Chinook Salmon spawning is indicated by the red dashed line at 17 °C, and the upper critical incubation temperature threshold is denoted by the orange dashed line at 15.6 °C (SJRRP 2010). See text for more information.

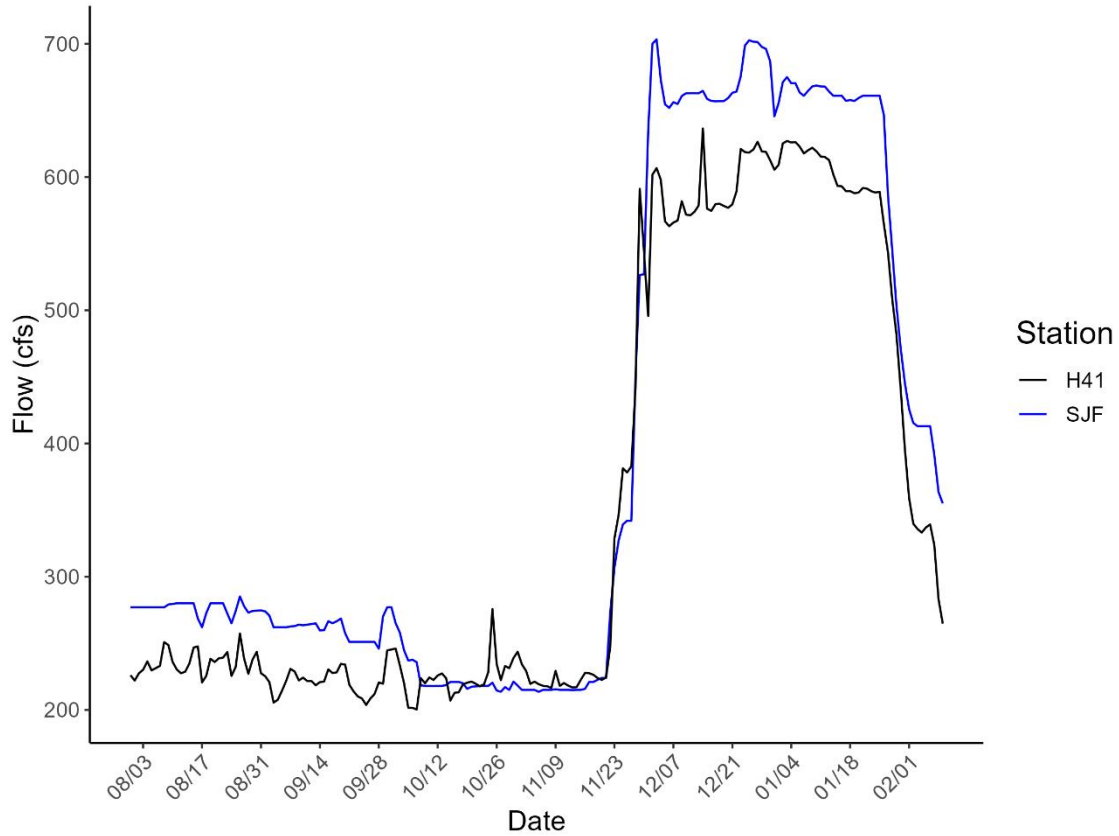


Figure 7. Mean daily river flow (cfs) recorded in the San Joaquin River near Friant Dam (rkm 430; SJF) and Highway 41 (rkm 410, H41) August 2021 through February 2022. Flow data were obtained from the California Data Exchange Center (CDEC, <http://cdec.water.ca.gov>).

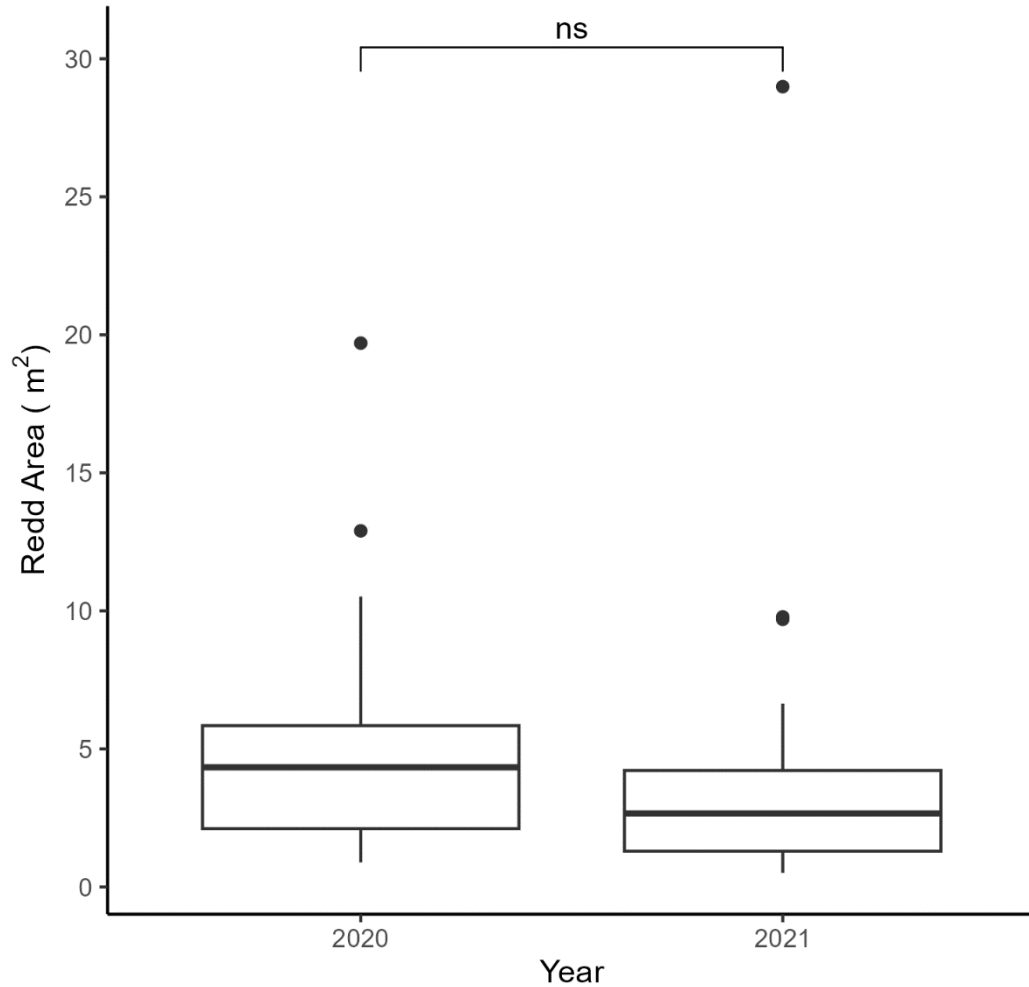


Figure 8. Boxplot of redd areas (m^2) for 2020 to 2021, with the horizontal black line showing the median individual redd area. The hinges include inter-quartile range, the lower whisker extends from the smallest value to the first quartile, the upper whisker extends from the third quartile to 1.5 times the inter-quartile range, and the dots above are outliers. There was no significant difference between years 2020 and 2021, as indicated by ns ($p=0.252$).

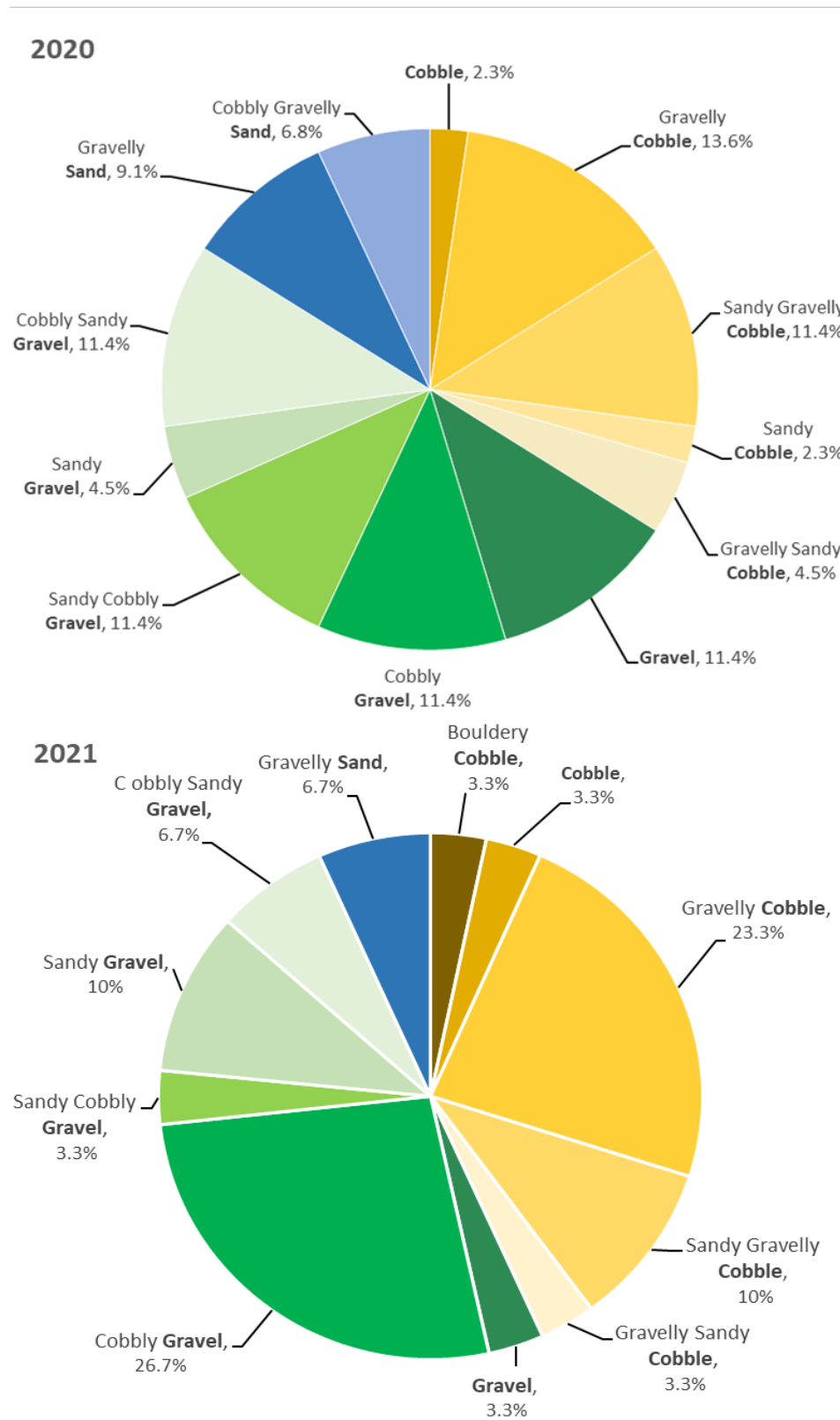


Figure 9. Percent of redds within each facies category for 2020 ($n = 43$) and 2021 ($n=32$).

3.0 Carcass Survey

3.1 Introduction

Since Chinook Salmon are semelparous, salmon carcass recoveries allow fisheries biologists to document the sex, spawn status, age, and origin of individual salmon, while also enabling the collection of biological samples for additional studies (Johnson et al. 2007). Similar to redd surveys, carcass surveys for SRCS in the SJRRA began in 2016. The SRCS carcasses recovered during carcass surveys are used to inform the following objectives during reintroduction:

- 1) Estimate the sex ratio of spawning SRCS.
- 2) Assess the biological attributes including spawning status and condition (e.g., carcass decay and disease).
- 3) Determine the spawning age distribution from coded wire tags (CWT).
- 4) Describe the spatial trends of carcasses recovered within the SJRRA.

Additionally, SRCS carcasses recovered during these surveys provide the SJRRA with the opportunity to collect genetic samples, eye lenses, and otoliths. Genetic samples are used for parentage analysis and eye lenses and otoliths support analyses of isotope microchemistry to identify juvenile rearing habitat outside the SJRRA, as well as conditions experienced within the ocean.

3.2 Methods

After carcass recovery, the origin of carcasses encountered during surveys were categorized based on the presence of external dart tags, PIT tags, and acoustic tags. Carcasses discovered were identified as trap and haul or broodstock adult releases based on their internal or external tags. All trap and haul adults were implanted with both acoustic and PIT tags. Carcasses discovered with external dart tags were identified as a trap and haul adult SRCS. If external dart tags were absent but PIT tag readers detected a FDX tag, carcasses were identified as a broodstock released adult SRCS. All released broodstock adults were implanted with FDX tags. If carcasses recovered had no tags present, these individuals were classified as a naturally returning SRCS, until they were later confirmed as broodstock by the CWT. Coordinates for each carcass, and the

channel type, channel position, and habitat type at carcass recovery location were recorded.

Carcasses were classified by level of decomposition (fresh, decayed firm, decayed soft, or skeleton). Decomposition was designated by eye clarity, blood remaining in the gills, and the state of tissue decay. Carcasses with clear eyes and blood remaining in the gills were classified as “fresh”, while fish with cloudy eyes and no blood in the gills were classified as “decayed firm” or “decayed soft”. Muscular tissue of carcasses categorized as “decayed firm” had stiff tissue whereas carcasses categorized as “decayed soft” had a less firm muscular tissue but were mostly intact. Fish carcasses that were more decayed, had a substantial quantity of missing muscular tissue, and were falling apart were classified as a skeleton.

Sex for each carcass was established by dissection, based on the presence of testes or ovaries/eggs in the peritoneal cavity. Spawn status for female carcasses was determined by the approximate quantity of eggs remaining ($\leq 1,200$ for spawned, 1,201 to 2,800 for partially spawned, or $\geq 2,801$ for unspawned). Spawn status categories were established based on 30, 30–70, and ≥ 70 percent of average fecundity (4,000) recorded from the Interim SCARF and the FRFH egg takes. If a carcass was too decayed, sex was recorded as unknown. Sex, spawn status, fork length (FL), and post orbital hypural length (POHL) measured to the nearest millimeter, were documented. The presence or absence of an adipose fin was recorded, with lack of an adipose fin indicating hatchery origin. Images of all carcasses were taken with the fish lying on its right side by a measuring tape and identification tag (Figure 10).

Heart tissue samples of all suspected volitional returning SRCS carcasses were collected for parentage analysis in 2021. Late in the season, protocol was changed to collect heart tissue samples from every carcass. Heart tissue samples approximately 1 square centimeter (cm²) were collected by dissection of the pericardial cavity. Samples were stored in 2 milliliter (ml) screw cap vials filled with 70 percent ethanol and provided to the National Oceanic and Atmospheric Administration Southwest Fisheries Science Center for analysis (results pending). Heads and tags of all carcasses were collected and preserved. After the survey season, CWTs, otoliths, and eyes were extracted and preserved from heads. CWTs were read with a Magniviewer Coded Wire Tag Microscope to provide the CWT release code. Release codes were then queried within SJRRP records to identify origin, brood year, release date, and release location as well as the total number of fish per release group. Otoliths and eyes were extracted for isotope analysis to identify juvenile salmon rearing habitat outside the SJRRA. Results from isotope analyses are not yet available.

3.3 Results

During 2021, 40 SRCS carcasses were recovered and consisted of 22 broodstock, 15 trap and haul, and 3 unknown returns of unknown origin (Table 3). There were 30 carcasses recovered within the SJRRA from Friant Dam to Lost Lake, five from Lost Lake to the Fresno County Sportsmen's Club, zero recovered from the Fresno County Sportsmen's Club to the Milburn Ecological Unit, and the remaining five were recovered during CDFW's mobile monitoring surveys (Figure 11). From the SRCS released in the SJRRA, 12.5 percent of broodstock and 20.3 percent of trap and haul hatchery return carcasses were recovered.

Broodstock carcasses ($n=25$) included a sex ratio of 1.44:1 (M:F), and most females (77.8 percent) had fully spawned. Trap and haul hatchery origin return carcasses recovered ($n=15$) included a sex ratio of 1.14:1 (M:F), with approximately half (57.1 percent) of all females fully spawned (Table 3). Therefore, the broodstock pre-spawn mortality was only 11.1 percent and 11.1 percent was unknown due to a females decomposition. The pre-spawn mortality for trap and haul hatchery origin returns was 42.9 percent. The mean FL for trap and haul hatchery returns was 124 to 206 mm larger for females and males, than broodstock carcasses (Table 3). Similar differences were observed in mean POHL measurements. No external evidence of disease was noticed.

All of the 40 SRCS carcasses recovered were adipose clipped and 75 percent were identified to have a CWT. Ten of the 40 CWTs were not present or recovered for subsequent identification. The remaining 30 carcasses consisted of two groups, trap and haul hatchery origin returns ($n=11$) which were captured in Reach 5 and released into Reach 1 or broodstock ($n=19$) that were released directly from the Interim SCARF into Reach 1. Trap and haul hatchery origin returns were from brood year 2018, whereas broodstock were from brood years 2016 through 2018 (Table 4). Age classes of carcasses recovered were 55 percent age-3, 17.5 percent age-4, 2.5 percent age-5, and 25 percent were unknown because CWTs were absent during extraction.

3.4 Discussion

As with the distribution of redds in 2021, most carcasses were found between Friant Dam and Lost Lake. Only 15 percent of SRCS released as either trap and haul hatchery origin returns or broodstock releases into Reach 1 of the SJRRA were recaptured as carcasses. Murdoch et al. (2010) estimated an overall carcass recovery rate of 26 percent for female SRCS and 15 percent for male SRCS in Washington State during a carcass mark-recapture survey. Like Murdoch et al.

(2010), we found that the sex ratio of SRCS carcasses recovered in the SJRRA was approximately 1:1.31 (M:F; for both broodstock and trap and haul hatchery return groups). The higher recovery of females than males as carcasses, despite an overall sex ratio of close to 2.1:1 (M:F) of mature fish released, does not necessarily indicate that proportionally fewer males participated in successful spawning. Instead, studies on SRCS by Murdoch et al. (2009) support that sexually dimorphic behavior may result in the recovery of more female than male SRCS carcasses. They suggested that behavior of female SRCS generally includes the construction of a redd and nest guarding until senescence, while males may spawn with multiple females but begin to drift downstream when their energy is depleted. In contrast, a salmon escapement study on the Lower American River recovered a greater proportion of males (59 percent) than females (41 percent) during carcass surveys in 2016 through 17 (Phillips and Mamola 2017). It is possible that the several deep pools located below spawning riffles in the San Joaquin River may have made it more difficult to recover downstream drifting male SRCS carcasses.

To date SRCS broodstock donor sources have all been collected from FRFH (typically as eggs) and reared for maturity at the Interim SCARF or Satellite Incubation and Rearing Facility immediately below Friant Dam for juvenile and yearling production releases or released as broodstock in excess of hatchery use. As a result, in 2021 all carcasses containing a CWT originated from the SCARF (Table 4). The Fisheries Framework (SJRRP 2018) calls for a diversity of adult age classes to contribute to the San Joaquin River SRCS population. This guidance document suggests that the age of return measured at the hatchery should be 3 or more-year classes, with a minimum 10 percent of each of the following age classes: 2, 3, 4-year-olds. The carcass survey found no 2-year-old spawners, but more than 10 percent of age 3- and 4-year-olds and even a small percentage of 5-year-olds. However, it should be noted that the SJRRP's population objective for spawning age class diversity may focus on those fish contributing to the hatchery broodstock, rather than on those spawning in the river.

Individual trap and haul carcasses were of greater length overall than broodstock carcasses for SRCS recovered in the SJRRA. The increased size of trap and haul carcasses compared to broodstock carcasses was also observed in 2019 (Demarest et al. 2021). Studies have found that higher-quality diets available during marine residency of juvenile Chinook Salmon have been correlated to improved juvenile body condition, growth, survival, and subsequent increased abundance of returning adults one year later (Beamish and Mahnken 2001; Wells et al. 2012). If

improved juvenile growth and body condition also translate to greater adult condition and individual size, then larger ocean-going SRCS individuals could produce larger and more fecund redds. The evidence here continues to point to the importance of the ocean-rearing phase for growth of SRCS.

3.5 Tables

Table 3. Summary of count, sex, and spawn status for successfully released broodstock and trap and haul hatchery origin return adult spring-run Chinook Salmon, and subsequent carcasses recovered in Reach 1 of the San Joaquin River Restoration Area in 2021. One trap and haul hatchery origin return carcass was categorized with an unknown gender due to degradation.

	<i>Released Broodstock</i>			<i>Trap and Haul Hatchery Origin Returns</i>		
	Female	Male	Unknown	Female	Male	Unknown
Fish Released	50	150	0	35	29	10
Carcasses Recovered	9	13	3	7	8	0
% Recovery	18	8.7	-	20	27.6	0
Mean Fork Length mm	594	524	-	718	730	-
(SD)	(84)	(75)	-	(32)	(56)	-
Mean Post Orbital Hypural Length mm	500	432	-	614	591	-
(SD)	(65)	(61)	-	(32)	(48)	-
% Unspawned	11.1	-	-	42.9	-	-
% Spawned	77.8	-	-	57.1	-	-

Table 4. Summary of Coded Wire Tag (CWT) codes, hatchery origin, brood year, and sex of trap and haul hatchery return and broodstock spring-run Chinook Salmon carcasses recovered in 2021 in Reach 1 of the San Joaquin River Restoration Area. All carcasses recovered originated from the Feather River Fish Hatchery (FRFH) or Interim Salmon Conservation and Research Facility (SCARF) and then were released by San Joaquin River Restoration Program.

CWT Code	Hatchery Origin	Brood Year	<i>Trap and Haul Hatchery Origin Returns</i>			<i>Released Broodstock</i>		
			Male	Female	Unknown	Male	Female	Unknown
61421	SCARF	2016	-	-	-	1	-	-
61442	SCARF	2017	-	-	-	2	5	-
60554	SCARF	2018	-	-	-	3	2	-
61408	SCARF	2018	-	1	-	-	-	-
61409	SCARF	2018	1	2	-	-	-	-
61410	SCARF	2018	2	1	-	-	1	-
61422	SCARF	2018	-	-	-	1	-	-
61447	SCARF	2018	-	-	-	4	0	-
61964	SCARF	2018	2	2	-	-	-	-
No CWT			4	0	-	2	1	3

3.6 Figures



Figure 10. A recovered released broodstock spring-run Chinook Salmon carcass. The measuring tape and identification tag indicate recorded data.

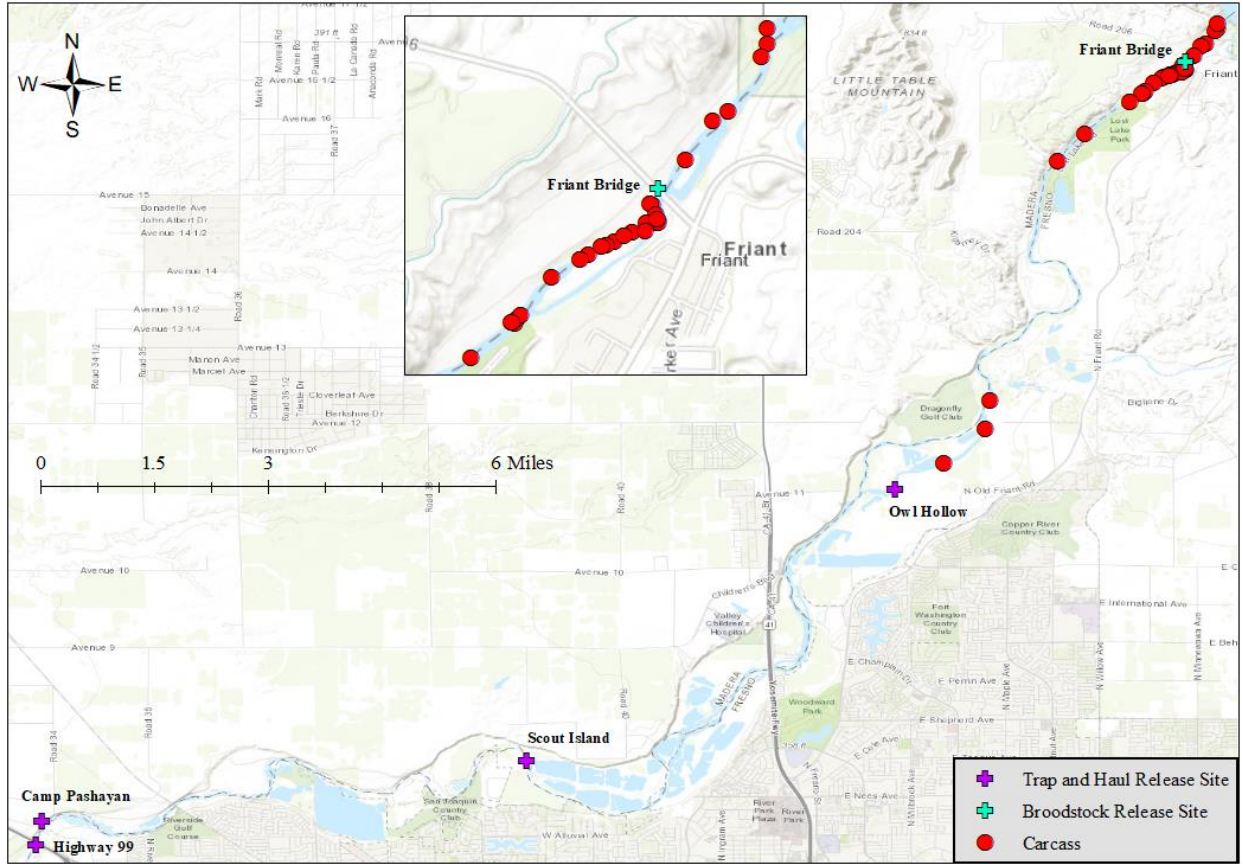


Figure 11. The locations of recovered adult spring-run Chinook Salmon carcasses (September 28 through November 24, 2021) and release sites for the adult spring-run Chinook Salmon broodstock (June, August, and October 2021) and trap and haul hatchery origin returns (April, May and June 2021) within the San Joaquin River Restoration Area.

4.0 Emergence Trapping Survey

4.1 Introduction

In the past, emergence traps have been used as a method to assess ETF survival and associated environmental characteristics that may affect emergence from the hyporheic environment for Chinook Salmon fry in the San Joaquin and Tuolumne Rivers (TID/MID 1991; Meyers 2019). The SJRRP initiated emergence trapping of SRCS redds in 2018 and this effort is ongoing. The goal of this survey is to enumerate the number of SRCS eggs that successfully developed and emerged as fry from redds in the SJRRA. Associated physical and chemical water quality characteristics including substrate composition, velocity, temperature, dissolved oxygen (DO), and turbidity are collected to gain a better understanding of characteristics that may influence ETF survival. The emergence trap survey is used to accomplish the following objectives:

- 1) Determine the developmental stage and size of emergent fry of SRCS in Reach 1 of the SJRRA.
- 2) Develop representative empirical counts of emerging alevin from natural redds in the SJRRA.
- 3) Document emergence timing for SRCS.
- 4) Relate fry production within observed redds to environmental variables hypothesized to affect the survival from egg to emerging fry, and assess the inter-annual variability of emergence success.
- 5) Estimate ETF survival (emergence) rate at individual SRCS trapped redds. Use estimates of female fecundity from SCARF broodstock and Feather River natural returns to calculate estimated percent survival.

4.2 Methods

The 2021 emergence trap installation and monitoring study was conducted November 09, 2021 through February 11, 2022. Emergence traps were placed on selected redds to allow for a distribution across riffle complexes in Reach 1 and over redd creation dates. Due to limitations in the emergence trap design, the redds selected had to be accessible on foot, of appropriate size, and

at moderate depths and water velocities. Due to the limited supply of redds this season, only 7 redds were chosen based on these constraints (Figure 12). The trap installation, monitoring, and removal schedule was based on the calculation of accumulated thermal units (ATUs), or cumulative temperature over time, where $1 \text{ ATU} = 1 \text{ }^{\circ}\text{C}$ for 1 day (Beacham and Murray 1990; Berejikian et al. 2011). For each emergence trapped redd, we calculated ATUs by adding average daily water temperatures over the incubation and emergence period (i.e., from date of redd discovery to trap removal) from the closest California Data Exchange Center (CDEC) station gage(s), which included FWQ (rkm 430), SJF (rkm 428), and/or H41 (rkm 410). Redds at or upstream of rkm 429 were assigned FWQ, redds downstream of rkm 429 and upstream of rkm 423 were assigned SJF, those downstream of rkm 423 and upstream of rkm 414 were assigned SJF/H41 for temperatures, and those downstream of rkm 414 in this year were assigned H41 (see Figure 12). Each redd was covered with an emergence trap once it reached 600 ATUs, approximately five days prior to the onset of emergence. Prior fall-run Chinook Salmon surveys in Reach 1 suggested that emergence would start around 650 ATUs with peak emergence occurring between 750-1,000 ATUs and emergence ending by 1,700 ATUs (Castle et al. 2016a; Castle et al. 2016b; TID/MID 1991). Thus, emergence traps were intended to be removed after reaching 1,700 ATUs. Early installation and removal after 1,700 ATUs ensured that all fry were captured during emergence.

The emergence trap design was modeled after the Lower Tuolumne Don Pedro Project Fisheries Study report (TID/MID 1991) that consisted of two metal frames fastened together with hose clamps. The frames were tear drop-shaped, measuring approximately 2.42-m long by 1.83-m wide at the widest point, then decreasing in width towards the tail end with an approximate area of 2.83 m^2 . A net consisting of 0.32-centimeter (cm) nylon mesh surrounded by a blue canvas skirt was placed over the frame. Small grommet holes were sewn into the mesh and secured with cotter pins and washers to metal pegs on the frames to prevent the net from disconnecting from the frame to minimize escapement. The traps were placed over the top of a redd and oriented to fully cover the egg pocket and as much of the tailspill as possible. The skirt was anchored into the substrate with 12 rebar posts, each 1-cm thick and 76-cm long. The rebar posts were pounded through grommets in the canvas skirt and cinched down using washers and hose clamps to prevent the skirt from rising. The exposed skirt material was then buried up to 30 cm in the substrate to prevent fry from escaping. Prior to installation, a plastic collection jar was attached to the funnel end of the trap to ensure that fry disturbed from the substrate during installation were captured. Once the trap

was firmly installed, the collection jar was checked, and then reattached to the funnel end of the trap to capture any fry that emerged. The jar consisted of a 3.8 Liter (L) polyethylene bottle with a 15-cm diameter funnel glued to the jar. Two holes were cut into the side of the jar and 0.32 cm nylon mesh was glued on top, allowing water to flow through to reduce salmon mortality in the jar (Figure 13).

Once traps were installed, they were checked 24 hours later, to look for fry that could have emerged prematurely due to the disturbance from trap installations. Thereafter, traps were checked three times weekly until projected peak emergence. Traps were checked more frequently during peak emergence (i.e., > 100 fish when checked) to increase survival by reducing the time spent inside the collection jar. When emergence declined (i.e., ≤ 10 fish when checked), checks were reduced to twice weekly. Water temperature, turbidity, DO, water depth, and velocity at upstream and downstream ends of each trap were collected during each trap visit. Water temperature and DO were collected on the substrate surface with a YSI multi-probe Pro 2030. Turbidity was measured just below the water surface with a Hach 2100Q Portable Turbidimeter. Water velocity was measured at 60 percent of the water column depth with an OTT Hydromet MF-pro Water Flow Meter. During trap checks, each trap was cleared of debris and scrubbed with a bristle brush to remove organic matter. After cleaning, the collection jar was checked for any fry and/or other species. If fish were present, they were transferred into a bucket filled with water and brought to shore for processing. Salmon and non-salmonid species were sorted and placed into separate buckets to be processed. Salmon fry were counted, measured to FL, and assigned a developmental stage. The assigned developmental stage corresponded to one of the following: stage 1 (egg); stage 2 (just hatched and translucent); stage 3 (fish has normal coloration and large yolk sac); stage 4 (fish beginning to absorb yolk); stage 5 (fish has fully absorbed yolk and is "buttoned up"); stage 6 (no seam). Caudal fin clips were taken from selected fry (up to 3 samples collected from each redd/week until a total of 15 samples/redd were taken) for genetic analysis to help determine parentage. After processing, Chinook salmon fry were released downstream of the trap. Any non-salmonid species were identified, measured to FL, and released downstream of the trap.

The initial timeline to remove the traps was January 29 through February 25, when each redd reached approximately 1,700 ATUs, the upper threshold when emergence ceased for previous fall-run emergence monitoring within the SJRRA (Castle et al. 2016a; Castle et al. 2016b). However, for all monitored traps, observed fry emergence ended before the 1,700 ATU threshold

was reached. Therefore, all traps were removed by February 9 and excavated by February 11. This coincided with the removal of the 7 traps when redds reached 1,452–1,759 ATUs. When the trap was removed, a vertical array of Solinst Levellogger 5s was inserted into the egg pocket of the freshly uncovered redd. Level logger arrays were installed to collect data for 48 to 72 hours to capture temperature fluctuations in the egg pocket as part of CDFW's Monitoring and Analysis Plan (MAP) Study 30 (Shriver 2014) that aims to quantify gravel permeability and intragravel flow in the spawning reach and relate to spawning success. After the level logger arrays were removed, redds were excavated. The same procedure was conducted for all seven traps. Trap removal involved placing a block net downstream of the trap to catch any fry or stray eggs that were released during the process. While the block net was set, a final trap check was performed, and water quality measurements were taken. All the rocks covering the skirt were then removed, followed by removing the rebar. The emergence trap netting and frame were then lifted off the redd and carried to shore while two other crew members in dry suits monitored for eggs or fry dislodged during trap removal. After trap removal, staff from CDFW sampled the redd incubation habitat. Once completed, each redd was excavated to locate any remaining eggs and/or entombed alevins or fry. At the beginning of each excavation, a pole was placed at the start of the tailspill to signify the center of the redd. Excavation consisted of two crew members digging through the pit and tailspill to find the egg pocket(s) and any entombed fry. Eggs or fry dislodged from the egg pocket(s) were collected with dip nets and placed into containers to be counted. After no new eggs were encountered, the width and depth of the egg pocket was recorded, as was the total area excavated. The redd was then backfilled with material from the surrounding riverbed.

4.3 Analysis

Emergence results were related to environmental variables hypothesized to influence the survival of egg to emerging fry within Reach 1 (SJRRP 2010). In particular, the relationships between the variables of water velocity, sand composition, DO at the surface of the redd, flow, and temperature with observed emergence in each monitored redd were investigated. Water velocity upstream of each redd and DO were measured during periodic field checks at each redd during the emergence trap study. The redd sand composition data were collected during the redd sampling described earlier. Mean daily flows calculated from continuous CDEC gage data provided a more general measurement of water volume moving through the spawning grounds,

and these calculations supplemented the more localized, but discrete information on water velocity obtained at each redd during field checks. In addition to mean daily flows, calculations based on continuous data from neighboring CDEC gage(s) were also used to estimate mean daily water temperatures and 7-day averages of the daily maximum water temperatures per redd. As gage station FWQ does not have a flow sensor, only two gages, SJF and H41, were used to calculate mean daily flows. Missing temperature and flow data for 2021 were linearly interpolated using the ‘zoo’ package in R. See Demarest et al. (2022) for additional information on methodology for addressing missing temperature and flow values during the 2018–2020 field seasons.

We explored data from 2018-2021. SRCS emergence trapping was evaluated to determine the response of emergent fry count to the environmental variables described previously. We fit 24 candidate generalized linear models (GLMs). Continuous predictor variables were standardized to have a mean of zero and standard deviation of one prior to inclusion in models. Based on ratios of the residual deviance to the degrees of freedom greater than one (Aho 2013), we determined the models fit was inadequate when trained with a Poisson distribution. To account for this overdispersion, we used negative binomial distributions with log link functions when training our models. The best approximating candidate GLM was determined using an information theoretic approach (Burnham and Anderson 2002), as indicated by the lowest Akaike Information Criterion with small sample bias adjustment (AICc; Hurvich and Tsai 1989). Prior to fitting the models we tested the variables for correlation and found year was highly correlated with mean flow and DO was correlated with mean temperature (Pearson correlation coefficient $r^2 = 0.74$ and 0.68 , respectively), thus these correlated variables were not included together within candidate models (see Dorman et al. 2013). We excluded five redds with missing data (NR40 and NR42 in 2018, and NR12, NR128, and NR189 in 2019) from these analyses. As there were no fry or eggs observed in NR40 and NR42, these were assumed to be test redds.

The ETF survival was also estimated for each of the 2021 emergence trapped redds. ETF survival is often the proportion of eyed-eggs within a redd that survive to emerge as fry from the gravel (Jensen et. al 2009). Here, the ETF survival estimates for 2021 were calculated as percentages, by dividing the average number of fry that emerged from each trap by the average fecundity defined as the number of eggs produced per female, and multiplying the results by 100. We used an estimate of fecundity in the calculation of ETF survival based on the average fecundity from Interim SCARF broodstock (2,420 eggs) and average fecundity from returning SRCS to the

FRFH (4,991 eggs) (P. Adelizi and A. Kastner, CDFW, personal communication, 2022). This approach to calculating ETF survival assumes that all eggs deposited within redds are viable, fertilized, and successfully developed to the eyed-egg stage.

4.4 Results

In 2021, a total of 2,874 fry (479 ± 618 ; mean ± 1 SD) were observed in the seven trapped redds; 504 were mortalities (Table 5). For the 2020 season, new jars were constructed with stronger materials to prevent any jars from breaking while on the trap, which carried over into the 2021 season. NR06SR21 and NR27SR21 had the lowest amount of emergence with no emerged fry throughout the season. NR07SR21 had the greatest amount of emergence with 1,423 emerged fry. The mean FL for all emerged fry in 2021 was 32.6 ± 1.6 mm (mean ± 1 SD; Table 5). Of the 2,874 fry that emerged, 55.9 percent were classified as stage 5 in their development, 33.5 percent were stage 4, and 4.6 percent were comprised of stages 2 and 3. There were no stage 6 fry seen in 2021, but 6 percent of the catch were of an unidentifiable stage. Due to Level logger array availability, staffing and COVID protocol, trap removal and excavation occurred at two separate dates. For all seven traps, excavations occurred two to nine days after the trap was pulled from the redd. Upon excavation, unhatched eggs were found in five of the seven emergence traps (Table 5). The number of unhatched eggs ranged from 14 (NR07SR21) to 562 (NR27SR21). The mean number of eggs recovered per redd was 164.

In 2021, the mean start of emergence was 632 ATUs (range of 539 to 694 ATUs; Table 5) and all fry emergence was completed by 1,217 ATUs (range of 539 to 1,217 ATUs; Table 5). The duration of emergence in 2021 ranged from 1 to 46 days with a mean of 29 days per redd (Table 5). Emergence in NR24SR21 only occurred during the 24-hour check and is listed as one day of emergence. Due to the early removal of the emergence traps, six of the seven traps did not reach 1,700 ATUs before being removed. None of the trapped redds were producing fry at the time of trap removal.

Patterning in the residuals of emergence count from trapped redds versus environmental predictors and fitted values indicated poor model fits that were not remedied with transformations. This could be due to unaccounted for predictors and/or limited sample size. Mean estimates of environmental variables measured from each redd are presented in Table 6. Predictions generated from model fits were often accompanied by large confidence intervals, indicating a high degree of

uncertainty in the predictive capacity of the tested models. With these caveats in mind, we present the best approximating candidate model for predicting fry emergence with the lowest degree of uncertainty in model-predicted responses, since it may provide insights for future studies. This model contained only a quadratic function of DO as a predictor for fry emergence ($AIC_c = 357.88$, $df = 4$, weight = 0.43). This candidate model predicts that the number of emerged fry remains very low below approximately $DO = 10$ milligrams per liter (mg/L) and only when redd surface DO exceeds 10.1 mg/L, does fry production exceed 500 (based on the lower 95 percent confidence limit; Figure 14). However, uncertainty in the estimate of predicted fry also greatly increases at increased levels of DO and several of the observed data points (colored dots) are outside the model-based predictions (Figure 14).

In 2021, the average fecundity of broodstock SRCS (2,420 eggs) spawned at the Interim SCARF and the average fecundity of returning SRCS (4,991) to the FRFH was used to calculate ETF survival. The estimated ETF survival per redd for 2021 ranged from 0 percent and 58.8 percent, using the average SCARF broodstock fecundity, and from 0 to 28.5 percent, using the average FRFH fecundity, for the monitored emergence trapped redds. The percentage of mortalities per redd, when weighted by the number of emergent fry, was 17.5 percent.

4.5 Discussion

Based on seven redds monitored with emergence traps, emergence during 2021 was generally below the goal for ETF survival of ≥ 50 percent outlined in the FMP (SJRRP 2010), although one redd (NR07SR21) if constructed by a spawner of broodstock origin, did meet SJRRP's goal. Survival from ETF were 21.62 in 2019 and 15.58 percent in 2020, calculated as a mean value per year across redds based on Interim SCARF fecundity. These estimates are below SJRRP's goal for emerging fry (Demarest et al. 2021; Demarest et al. 2022). However, it was noted that four of the collection jars on the emergence traps in 2019 fell off during peak emergence, resulting in an underestimate of emergence for that year. In both 2020 and 2021, despite improvement to the adhesive connecting the collection jars to the emergence traps, the ETF survival estimate did not surpass 2019's ETF survival estimate. The weighted average number of mortalities per redd in 2021 (17.5 percent) also exceeded that from 2019 (8 percent) and more closely resembled the mortality estimate from 2018 (20 percent) and 2020 (21 percent; Demarest et al. 2022). In both 2020 and 2021, released broodstock made up a larger proportion of spawners

than in 2019 when high flow conditions allowed for volitional hatchery return fish to migrate from the ocean to Reach 1 of the SJRRA. Thus, the presence of fewer ocean-rearing spawners and/or poorer incubation conditions may have contributed to continued reduced emergence success in both 2020 and 2021 compared to 2019. Stark et al.'s research (2018) determined that egg viability (survival until the eyed-egg stage) was significantly greater for wild-origin versus captive-reared SRCS in East Fork Salmon River, Idaho. Linking individual redds to spawner group identity (e.g., distinguishing redds produced by volitionally passed and trap and haul hatchery origin returns versus broodstock released spawners) is needed to better understand the role of spawner characteristics in determining ETF survival and the utility of releasing broodstock spawners as a reintroduction strategy.

Monitored redds in 2021 had a higher number of emerged fry and a similar weighted mortality rate compared to 2020. However, there was a lower percentage of more developed fry (\geq stage 5) in 2021 (56 percent) than in 2020 (96 percent; Demarest et al. 2022) with a higher portion of stage 4 and below fry (33 percent) in 2021. Although in areas with higher concentrations of fine sediment, it has been noted that many fry emerge without fully absorbing their yolk sac (stage 4 and below; Cardenas et al. 2016; Tappel and Bjornn 1983), we did not see evidence of this trend from our simple comparison of 2020 and 2021 fry stages.

Compared to 2020, SRCS fry in 2021 emerged at slightly lower ATUs but still within the range of ATU's documented for fall-run Chinook Salmon in the SJRRA (Castle et al. 2016a; Castle et al. 2016b). Previous work has shown that emergence typically begins around 650 ATUs, so emergence traps are normally placed at approximately 600 ATUs, or about five days prior to the beginning of fry emergence (Castle et al. 2016a; Castle et al. 2016b). The slight change in emergence timing in 2021, suggests placing emergence traps earlier than 600 ATU would benefit overall emergence numbers. The seven monitored redds in 2021 exhibited emergence until approximately 1,217 ATUs (or 87 days after redd discovery), and in 2020 the five emergence-trapped redds produced fry until 1,379 ATUs. However, in 2019, seven out of twelve emergence-trapped redds were still producing fry beyond 1,370 ATUs. Thus, 2021 fish appeared to emerge at slightly lower ATUs compared to prior years, but still within the typical ATU threshold. Overall, similarities in emergence timing between fall-run and SRCS show that the use of ATUs is still a successful method for predicting emergence timing, and continued emergence monitoring may reveal causes for differences in fry development rates. We recommend in future study years to

shift installing the emergence traps earlier at approximately 550 to 600 ATUs as this has shown to be a justifiable time to start installing the emergence traps to capture the beginning of fry emergence.

Results from GLM and model selection did not yield precise quantitative estimates of emergence based on modeled relationships with hypothesized environmental variables. However, visual observation of predictions from the top-performing model suggests that fry emergence likely has some positive relationship with DO at the redd surface. Furthermore, DO may need to exceed approximately 10 mg/L at the redd surface to not greatly limit emergence (Figure 14). Note that there were only seven trapped redds where emergence exceeded 10.75 mg/L (see the dashed red line in Figure 14), when the model predicted a mean drop in emergence with additional DO increases. Given the low sample size and large 95 percent confidence intervals above 10.75 mg/L contributing to these model predictions, we do not place confidence in this apparent decline in emergence at very high DO levels. Having additional data on emergence counts from trapped redds at higher DO levels may help reduce uncertainty in estimates of fry emergence count based on DO as a predictor, especially at higher DO values. Although the measured values of DO near the redds exceeded the SJRRP objective for DO greater than 7 mg/L (SJRRP 2021) in 2021 (Table 6) and the three other analyzed years (Demarest et al. 2022), it is possible that conditions of the substrate and hyporheic exchange require much higher surface DO levels to oxygenate the eggs under the gravel. Another caveat is that most of the redds below this ~ 10 mg/L threshold were from the 2018 field season and were produced by spawners of broodstock origin, in contrast with many of the redds at higher DO levels (which were associated with more trap and haul or volitionally-returning hatchery spawners in 2019 or 2020; see Figure 14). Thus, DO levels could be masking a relationship between spawner origin and emergence success that we are currently (without genetic results for all years) unable to resolve. See Demarest et al. (2021) for further discussion of field observations and potential differences between broodstock and volitionally returning hatchery spawners.

Similarly, there may be other unmodeled factors, particularly at higher DO levels, that contribute more to the variation in emergence success and have yet to be identified. In 2020, USFWS and CDFW also began installing DO and temperature loggers within constructed artificial redds to study the conditions of the subsurface redd environment that directly affects egg and fry development and to determine the potential effects of emergence traps on intragravel flow and DO.

This study was expanded and continued for the 2021 field season. Results from CDFW's MAP Study 30 (Shriver 2014), which was implemented during the fall-run Chinook Salmon spawning season and was reinstated in 2021, will also contribute to a better understanding of spawning habitat quality and potential implications for fry emergence.

4.6 Tables

Table 5. The 2021 fry emergence start and end accumulated thermal units (ATU), emergence duration, count, incidental mortalities, size, and excavated egg count in Reach 1 of the San Joaquin River Restoration Area. Data is derived from point data measured during emergence trap checks. The location (rkm) of the trapped redd is provided.

^a Indicates the redd was excavated later than when the trap was removed.

^b Indicates emergence was during the 24-hour check.

<i>Year</i>	<i>Redd #</i>	<i>Location (rkm)</i>	<i>Start (ATU)</i>	<i>End (ATU)</i>	<i>Days of Emergence</i>	<i>Fry Count</i>	<i>Mortality</i>	<i>Fry Size (mm)</i>		<i>Eggs Found</i>
								<i>Mean (SD)</i>	<i>Range</i>	
2021	NR06SR21 ^a	429	NA	NA	NA	0	0	NA	NA	0
2021	NR07SR21 ^a	428	671	1086	30	1423	14	32 (1.2)	29-42	14
2021	NR17SR21 ^a	429	694	1192	36	1096	361	32 (1.5)	25-36	106
2021	NR18SR21 ^a	429	674	1102	31	205	24	34 (1.2)	39-36	0
2021	NR24SR21 ^{a,b}	429	539	539	1	6	2	32 (1)	31-33	274
2021	NR25SR21 ^a	429	581	1217	46	144	103	33 (2.5)	25-37	194
2021	NR27SR21 ^a	429	NA	NA	NA	0	0	NA	NA	562

Table 6. Mean environmental characteristics for each emergence trapped redd and overall means and standard deviations in the San Joaquin River Restoration Area, during 2021. Data is derived from point data measured during emergence trap checks.

<i>Redd #</i>	<i>Dissolved Oxygen (mg/L)</i>	<i>Turbidity (NTU)</i>	<i>Temperature (°C)</i>	<i>Depth (m)</i>		<i>Velocity (m/s)</i>	
				<i>Above Trap</i>	<i>Below Trap</i>	<i>Above Trap</i>	<i>Below Trap</i>
NR17SR21	10.124	5.487	12.559	0.803	0.531	0.904	1.237
NR06SR21	9.489	2.756	13.500	0.627	0.560	0.776	0.934
NR07SR21	10.442	5.835	12.354	0.965	0.813	0.538	0.741
NR18SR21	10.464	6.531	12.059	0.695	0.525	0.831	1.049
NR24SR21	10.995	7.040	11.585	0.517	0.403	0.554	1.291
NR25SR21	10.810	7.226	11.430	0.512	0.438	0.479	1.322
NR27SR21	11.094	6.914	11.456	0.718	0.494	0.801	1.199
<i>Mean</i>	<i>10.488</i>	<i>5.970</i>	<i>12.135</i>	<i>0.691</i>	<i>0.538</i>	<i>0.698</i>	<i>1.110</i>
<i>(SD)</i>	<i>0.557</i>	<i>1.555</i>	<i>0.748</i>	<i>0.161</i>	<i>0.133</i>	<i>0.169</i>	<i>0.213</i>

Table 7. Annual mean adult spring-run Chinook Salmon fecundity and egg-to-fry (ETF) survival estimates for 2021. Percent ETF survival was calculated using the estimated fecundity of broodstock at the Interim Salmon Conservation and Research Facility (SCARF) and returns to the Feather River Fish Hatchery (FRFH). See Table 5 for fry emergence counts, and note that fecundity values in row 1 were applied to estimate all redds' ETF survival rates.

<i>Fecundity SCARF Broodstock</i>	<i>Fecundity FRFH Returns</i>	<i>Redd #</i>	<i>Egg-to-Fry Survival SCARF Broodstock (%)</i>	<i>Egg-to-Fry Survival FRFH Returns (%)</i>
2,420	4,991			
		NR06SR21	0	0
		NR07SR21	58.8	28.5
		NR17SR21	45.3	22.0
		NR18SR21	8.5	4.1
		NR24SR21	0.2	0.1
		NR25SR21	6.0	2.9
		NR27SR21	0	0

4.7 Figures

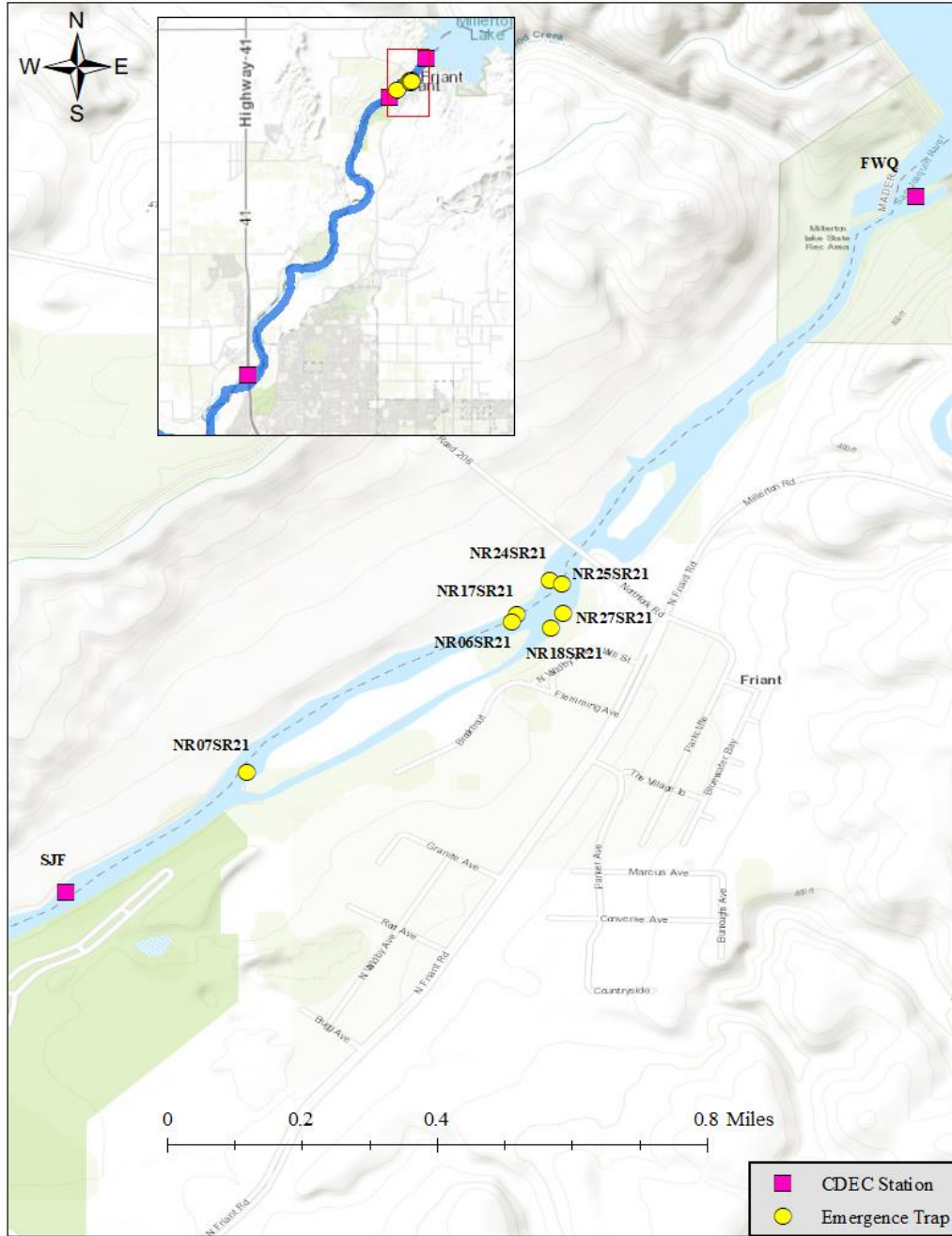


Figure 12. Locations of emergence traps for spring-run Chinook Salmon in the San Joaquin River Restoration Area, 2021. The inset map indicates the emergence-trapped redds within the first reach of the SJRA, and the pink boxes show California Data Exchange Center (CDEC) stations within the area.



Figure 13. An emergence trap installed during 2019. The red arrow indicates flow direction.

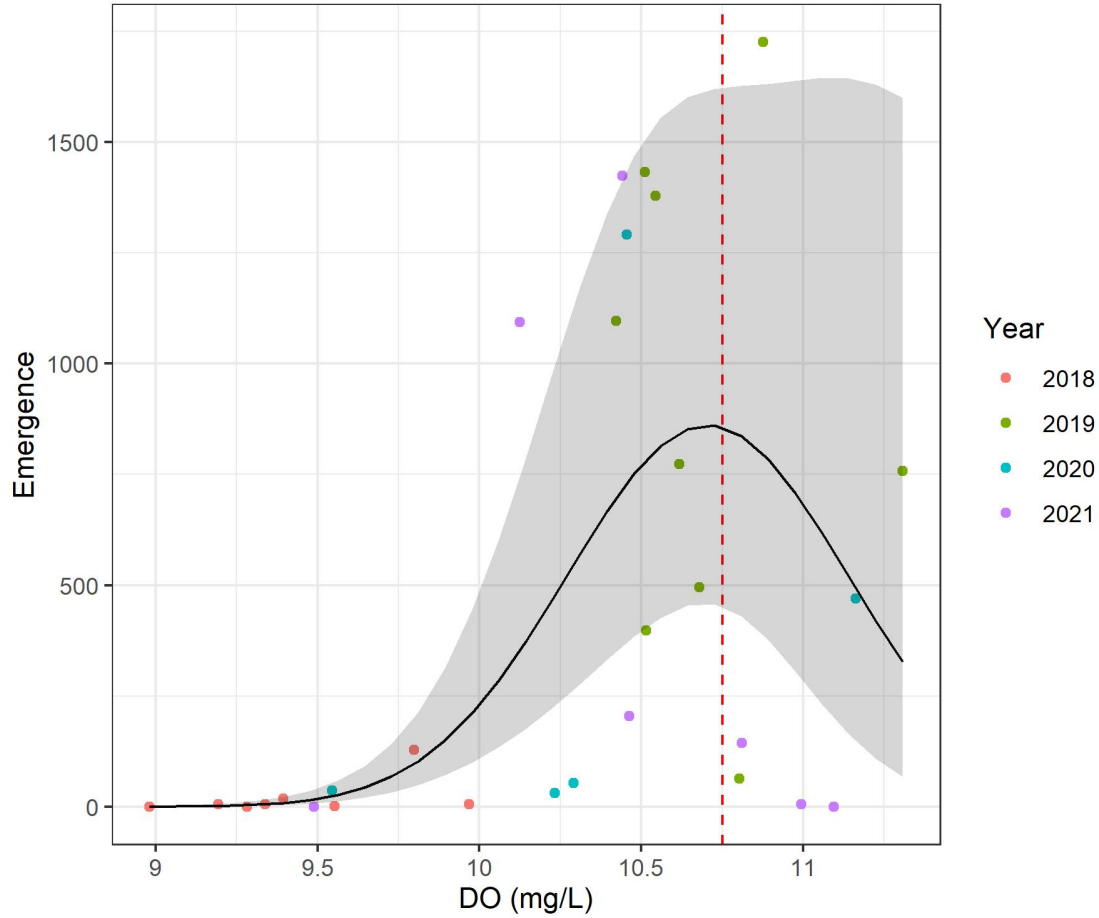


Figure 14. Predicted values (black line) and 95 percent confidence intervals (gray shaded region) of emergence fry count based on dissolved oxygen (DO; mg/L) at the surface of the redd. Colored dots are observed values distinguished by survey year. Predictions of emergence at dissolved oxygen concentrations greater than approximately 10.75 mg/L (demarcated by the dashed red line) are based on limited observations and considered unreliable.

5.0 Conclusions and Recommendations

In 2021, 97 percent of spawning was observed in the 11 rkm directly downstream of Friant Dam. The spatial distribution of spawning and temperatures surpassing the upper critical temperature threshold for spawning (17 °C) near Highway 41 may indicate that suitable spawning habitat was restricted in 2021. In future years, maintaining cold water releases from Friant Dam during the spawning season, when possible given Water Year type and available cold water pool volume, could help expand suitable spawning habitat.

Returning adult SRCS were also exposed to temperatures that exceeded the optimal temperature threshold (15 °C; SJRRP 2018) at both capture and release during trap and haul operations. During capture in Reach 5, water temperatures ranged from 17.4–23.1 °C, and salmon were released into Reach 1 at water temperatures of 13.3–20.4 °C (Sutphin and Root 2020). Studies on SRCS in Battle Creek, CA by Ward and Kier (1999) suggested that exposure to temperatures between 16–19 °C may lead to infertility and pre-spawn mortality. The SJRRP may want to consider the benefits of releasing captured adults further upstream in Reach 1 of the SJRRA in cooler water temperatures to enhance spawning success, if a main focus of the Recolonization Phase is to increase the number of spring-run spawning naturally (SJRRP 2018). Currently trap and haul adults are released into water at the release location that is no greater than a river temperature of 20 °C, and restrict differences in transport tank and river temperatures to 4 or 5 °C. We recommend having a discussion with the FMWG to further refine the release strategy to reflect a maximum daily temperature of 20 °C given water temperatures may continue to rise later in the day after a release event. Such considerations should be weighed alongside SJRRP study objectives defined for other life stages (e.g., adult holding habitat selection).

Mean individual redd area was 0.8 m² smaller in 2021 compared to 2020. Released broodstock adults were a larger proportion of the spawning population in 2021, similar to 2020. Demarest et. al. (2021) suggested that trap and haul and volitional hatchery returns may produce larger redds than broodstock released adult SRCS. However, the continuation of redd surveys will be needed to confirm this hypothesis. Similar studies have found that fish size is related to redd size, suggesting that larger Chinook Salmon produce larger redds (Burner 1951; Ottaway et al. 1981; Neilson and Banford 1983). If this relationship holds true within the SJRRA, redd size will likely increase with a larger proportion of adult SRCS returning to the SJRRA from the ocean.

Burner (1951) also suggested that Chinook Salmon need approximately four times their redd size of suitable spawning habitat per spawning pair. The SJRRP (2018) has set a long-term (i.e., beyond 2040) SRCS abundance target of 22,500 spawning females (or equivalently, 22,500 spawning pairs with an assumed 1:1 M:F ratio). If four times the average redd size (9.1 m² based on 2019 data; Shriver and Tham 2020) is needed per spawning pair of SRCS, approximately 819,000 m² of suitable spawning habitat will be needed to reach the long-term production target of 22,500 female SRCS spawners. If, in the future with a greater proportion of naturally-returning SRCS, the average redd size increases above 9.1 m², even more suitable spawning habitat may be needed. Based on temperature thresholds for incubation and emergence (Gordon and Greimann 2015; SJRRP 2018), the first 8 to 11 rkm below Friant Dam for most Water Year types have water temperatures suitable for Chinook Salmon to successfully spawn and produce viable offspring. Modeling suggests that the first 8 rkm downstream of Friant Dam provides approximately 53,000 m² of spawning habitat that is thermally and hydraulically suitable to Chinook Salmon (see Gordon and Greimann 2015), therefore capable of supporting up to 1,456 spawning females or a total of 2,912 spawners, if a 1:1 (M:F) sex ratio is assumed. During the Recolonization Phase, the SJRRP set a population target of 500 natural origin return spawners and an overall spawning escapement target of $\geq 3,000$ spawners that includes both natural origin returns and hatchery origin returns (SJRRP 2018). Since it is estimated that SJRRP can support 2,912 spawners currently, the SJRRP would need to add approximately 1,600 m² of suitable SRCS spawning habitat to reach the population and escapement targets during the Recolonization Phase.

Emergence trapping results in 2021 resulted in ETF survival estimates that were below the goal outlined in the FMP (SJRRP 2010). There are likely many physical and biological factors that contribute to reduced ETF survival. Preliminary results indicated that DO measured at the substrate surface of trapped redds has a positive relationship with emergence. However, more data is needed to develop a clearer relationship and identify other contributing factors. With additional years of emergence trapping and measurements of incubation habitat as obtained through CDFW's MAP Study 30 (Shriver 2014) and other studies, the SJRRP could identify the other factors influencing emergence and potentially use these conclusions to inform habitat restoration.

Demarest et. al. 2021 suggested there may be difference in ETF survival between ocean-rearing returns versus broodstock released spawners. During spawning surveys in 2021, documenting spawner identity for each redd was unsuccessful. Due to spring-run holding

throughout the summer, color coded dart tags are commonly covered in algae and difficult to discern. To help with documenting spawner identity, larger color-coded disc tags could be used in place of dart tags to make visual identification easier. Additionally, the SJRRP does supplemental drone surveys a few times a year to assist with mapping spawning habitat during the SRCS spawning season in Reach 1 of the SJRRA. In future years, additional drone surveys as a part of regular redd and carcass surveys may be able to help identify spawner origin by capturing images of SRCS tag color associated with individual redds. Although spawner identity was not determined with observations, genetic analyses of tissue samples collected from emergence trap fry, recovered carcasses, and juveniles collected with rotary screw traps are still in progress. Results from genetic analyses will identify the parentage of progeny that were successfully produced by SRCS and elucidate spawning success for each type of spawner. By continuing to improve our understanding of the biological and habitat attributes that contribute to successful spawning, information obtained from the redd, carcass, and emergence surveys can help inform restoration actions and an adaptive management program that aids the reintroduction of SRCS to the San Joaquin River.

6.0 References

- Aho, K. A. 2013. Foundational and applied statistics for biologists using R. Chapman and Hall/CRC.
- Beacham, T. D., and C. B. Murray. 1990. Temperature, egg size, and development of embryos and alevins of five species of Pacific salmon: a comparative analysis. *Transactions of the American Fisheries Society* 119:927–945.
- Beamish, R.J., and C. Mahnken, C. 2001. A critical size and period hypothesis to explain natural regulation of salmon abundance and the linkage to climate and climate change. *Progress in Oceanography* 49: 423-437.
- Berejikian, B. A., J. T. Gable, and D. T. Videgar. 2011. Effectiveness and trade-offs associated with hydraulic egg collections from natural salmon and steelhead redds for conservation hatchery programs. *Transactions of the American Fisheries Society* 140:549–556.
- Buffington, J. M., and D. R. Montgomery. 1999. A procedure for classifying textural facies in gravel-bed rivers. *Water Resources Research* 35(6):1903-1914.
- Burner, C. 1951. Characteristics of Spawning Nests of Columbia River Salmon. *Fishery Bulletin* 61. *Fishery Bulletin of Fish and Wildlife Service* 52. United States Department of Interior. US Fish and Wildlife Service.
- Burnham, K. P., and D. R. Anderson. 2002. Model selection and multimodel inference: a practical information-theoretic approach. Second Edition. Springer.
- Cardenas, M. B., A. E. Ford, M. A. Kaufman, A. J. Kessler, and P. L. M. Cook. 2016. Hyporheic flow and dissolved oxygen distribution in fish nests: The effects of open channel velocity, permeability patterns, and groundwater upwelling. *Journal of Geophysical Research: Biogeosciences* 121:3113–3130.
- Castle, C., J. N. Cullen, J. Godwell, Z. Johnson, M. Workman, J. Kirsch, and A. Shriver. 2016a. Fall-run Chinook Salmon spawning assessment during 2013 and 2014 within the San Joaquin River, California. Annual Technical Report of the San Joaquin River Restoration Program. U.S. Fish and Wildlife Service, Lodi, California.
- Castle, C., J. Barkstedt, J. Kirsch, and A. Shriver. 2016b. Fall-run Chinook Salmon spawning assessment during 2015 within the San Joaquin River, California. Annual Technical Report of the San Joaquin River Restoration Program. U.S. Fish and Wildlife Service, Lodi, California.

- Demarest, A., A. Raisch, L. Yamane, E. Strange, and A. Shriver. 2022. Assessment of Spring-run Chinook Salmon Spawning during 2020 within the San Joaquin River, California. San Joaquin River Restoration Program Annual Technical Report. U.S. Fish and Wildlife Service, Lodi, California.
- Demarest, A., A. Raisch, L. Yamane, L. Smith, and A. Shriver. 2021. Spring-run Chinook Salmon Spawning Assessment During 2019 within the San Joaquin River, California. San Joaquin River Restoration Program Annual Technical Report. U.S. Fish and Wildlife Service, Lodi, California
- Dormann, C. F., J. Elith, S. Bacher, C. Buchmann, G. Carl, G. Carré, J. R. G. Marquéz, B. Gruber, B. Lafourcade, P. J. Leitão, T. Münkemüller, C. McClean, P. E. Osborne, B. Reineking, B. Schröder, A. K. Skidmore, D. Zurell, and S. Lautenbach. 2013. Collinearity: A review of methods to deal with it and a simulation study evaluating their performance. *Ecography* 36(1):27–46.
- Fisher, F. W. 1994. Past and present status of Central Valley Chinook salmon. *Conservation Biology* 8:870–873.
- Fry, D. H. 1961. King salmon spawning stocks of the California Central Valley, 1940-1959. *California Department of Fish and Game* 47(1):55-71.
- Gallagher, S. P., P. K. J. Hahn, and D. H. Johnson. 2007. Redd counts. In D. H. Johnson (Ed.), *Salmonid field protocols handbook: Techniques for assessing status and trends in salmon and trout populations* pp. 197–234. Bethesda, MD: American Fisheries
- Galloway, D., and F. S., Riley. 1999. San Joaquin Valley, California. Land Subsidence in the United States: US Geological Survey Circular 1182:23–34.
- Giovannetti, S. L., and M. R. Brown. 2008. Adult spring Chinook salmon monitoring in Clear Creek, California: 2007 annual report. USFWS Report. U.S. Fish and Wildlife Service, Red Bluff Fish and Wildlife Office, Red Bluff, California.
- Gordon, P. E., and B. P., Greimann, 2015. Preliminary Investigation of Spawning Habitat Within Reach 1 of the San Joaquin River. San Joaquin River Restoration Program.
- Hurvich, C. M., and C. Tsai. 1989. Regression and time series model selection in small samples. *Biometrika* 76:297–307.
- Johnson, D. H., B. M. Shrier, J. S. O’Neal, J. A. Knutzen, X. Augerot, T. A. O’Neil, and T. N. Pearsons, plus 37 contributing authors. 2007. *Salmonid Field Protocols Handbook: Techniques for Assessing Status and Trends in Salmon and Trout Populations*. The American Fisheries Society in association with State of the Salmon. p.1-478.
- McNeil, W. J. 1964. Redd superimposition and egg capacity of pink salmon spawning beds. *Journal of the Fisheries Board of Canada* 21:1385-1396.

- McReynolds, T. R., C. E. Garman, P. D. Ward, M. C. Schommer. 2005. Butte and Big Chico Creeks Spring-Run Chinook Salmon, *Oncorhynchus tshawytscha* Life History Investigation 2003-2004. Inland Fisheries Administrative Report No. 2005-1 California Department of Fish and Wildlife. Sacramento Valley Central-Sierra Region.
- Meyers, M. A. 2019. Artificial Redd Study: The effect of sand accumulation on incubation habitat quality. San Joaquin River Restoration Technical Memorandum. California Department of Water Resources, Fresno, California.
- Murdoch, A. R., T. N. Pearsons, and T. W. Maitland. 2009. Use of carcass recovery in evaluating the spawning distribution and timing of spring Chinook Salmon in the Chiwawa River, Washington. *North American Journal of Fisheries Management* 29:1206-1213.
- Murdoch, A. R., Pearsons, T. N., and T. W. Maitland. 2010. Estimating the spawning escapement of hatchery- and natural-origin spring Chinook Salmon using redd and carcass data. *North American Journal of Fisheries Management* 30: 361-375.
- Neilson, J. D., and C. E. Banford. 1983. Chinook Salmon (*Oncorhynchus tshawytscha*) Spawner characteristics in relation to redd physical features. *Canadian Journal of Zoology* 61 (7):1524-1531.
- Null, S. E., and J. H. Viers. 2013. In bad waters: Water year classification in nonstationary climates: Water Year Classification in Nonstationary Climates. *Water Resources Research* 49:1137–1148.
- Ottaway, E. M., P. A. Carling, A. Clarke, and N. A. Reader. 1981. Observations on the structure of brown trout, *Salmo trutta* Linnaeus, redds. *Journal of Fish Biology* (19):593–607.
- Phillips, Jeanine, and Michael J. Mamola. 2017. Lower American River Fall-Run Chinook Salmon Escapement Survey October 2016 - January 2017. https://www.calfish.org/portals/2/Programs/CentralValley/LAR/docs/2016_LARC_Report.pdf.
- SJRRP (San Joaquin River Restoration Program). 2010. Fisheries Management Plan. San Joaquin River Restoration Program, Sacramento, California.
- SJRRP (San Joaquin River Restoration Program). 2014. Draft Seepage Management Plan. San Joaquin River Restoration Program, Sacramento, California.
- SJRRP (San Joaquin River Restoration Program). 2017 Restoration Flows Guidelines Version 2.0. San Joaquin River Restoration Program, Sacramento, California.
- SJRRP (San Joaquin River Restoration Program). 2018. Fisheries Framework: Spring Run and Fall-Run Chinook Salmon. San Joaquin River Restoration Program, Sacramento, California.

- SJRRP (San Joaquin River Restoration Program). 2021. Fishery Long-Term Monitoring Plan Administrative Draft. September 2021.
- Shriver, A. J. 2014. Monitoring and Analysis Plan Study 30: San Joaquin River Spawning Habitat Assessment – Incubation Environment. https://www.restoresjr.net/?wpfb_dl=1136.
- Shriver, A. J. 2015. Spawning behavior and habitat selection of Chinook salmon (*Oncorhynchus tshawytscha*) within the San Joaquin River, California. SJRRP Science Symposium, Los Banos, CA. June 2015.
- Shriver, A. J. 2017. Spawning behavior and habitat selection of Chinook Salmon (*Oncorhynchus tshawytscha*) within the San Joaquin River, California. 35th Annual Salmon Restoration Conference, Davis, California. April 2017.
- Shriver, A. J., and E. J. Tham. 2020. Quantifying Spring-Run Chinook Spawning Habitat using GIS. San Joaquin River Restoration Program 2020 Virtual Science Meeting.
- Stark, E. J., D. T. Vidergar, C. C. Kozfkay, P. A. Kline. 2018. Egg Viability and Egg-to-Fry Survival of Captive-Reared Chinook Salmon Released to Spawn Naturally. Transactions of American Fisheries Society. Vol. 147. 13:128-138
- Sutphin, Z. and R. Root. 2021. 2021 Adult Spring-Run Chinook Salmon Monitoring and Trap and Haul in the San Joaquin River Restoration Area. San Joaquin River Restoration Program Annual Technical Report ENV-2020-088. Bureau of Reclamation, Denver Technical Service Center, Colorado.
- Tappel, P. D., and T. C. Bjornn. 1983. A New method of relating size of spawning gravel to salmonid embryo survival. North American Journal of Fisheries Management, 3: 123-135.
- TID/MID (Turlock Irrigation District and Modesto Irrigation District). 1991. Lower Tuolumne River spawning gravel studies report. Appendix 8 to Don Pedro Project Fisheries Studies Report (FERC Article 39, Project No. 2299). Vol. IV. Prepared by EA Engineering, Science, and Technology, Lafayette, California.
- Traum, J. A., S. P. Phillips, G. L. Bennett, C. Zamora, and L. F. Metzger. 2014. Documentation of a groundwater flow model (SJRRPGW) for the San Joaquin River Restoration Program study area, California. U.S. Geological Survey Scientific Investigations Report 2014–5148.
- Ward, M.B., W. M. Kier. 1999. Battle Creek Salmon and Steelhead Restoration Plan. Kier Associates, Sausalito, CA.
- Warner, G. 1991. Remember the San Joaquin. In: Lufkin, A, editor. California's salmon and steelhead. Berkeley: University of California Press. p.61-72.

- Weeber, M. A., G. R. Giannico, and S. E. Jacobs. 2010. Effects of redd superimposition by introduced kokanee on the spawning success of native bull trout. *North American Journal of Fisheries Management* 30.1:47-54.
- Wells, B.K., J. A. Santora, J. C. Field, R. B. MacFarlane, B. B. Marinovic, and W. J. Sydeman, 2012. Population dynamics of Chinook salmon *Oncorhynchus tshawytscha* relative to prey availability in the central California coastal region. *Marine Ecology Progress Series* 457: 125-137.
- Williams, J. G. 2006. Central Valley salmon: a perspective on Chinook and Steelhead in the Central Valley of California. *San Francisco Estuary and Watershed Science* 4(2).
- Yoshiyama, R. M., F. W. Fisher, and P. B. Moyle. 1998. Historical abundance and decline of Chinook Salmon in the Central Valley Region of California. *North American Journal of Fisheries Management* 18:487-521.
- Yoshiyama, R. M., E. R. Gerstung, F. W. Fisher, and P. B. Moyle. 2000. Chinook salmon in California's Central Valley: an assessment. *Fisheries* 25(2):6-20.
- Yoshiyama, R. M., E. R. Gerstung, F. W. Fisher, and P. B. Moyle. 2001. Historical and present distribution of Chinook salmon in the Central Valley drainage of California. Pages 71-177 in R. L. Brown, editor. *Contributions to the biology of Central Valley salmonids*. Volume 1. California Department of Fish and Game Fish Bulletin 179.