

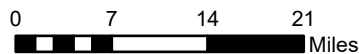
Subsidence Rates (feet/year)
July 2012 to July 2024

Elevation

- 0 to 0.15
- 0.15 to 0
- 0.3 to -0.15
- 0.45 to -0.3
- 0.6 to -0.45

Subsidence Monitoring Points

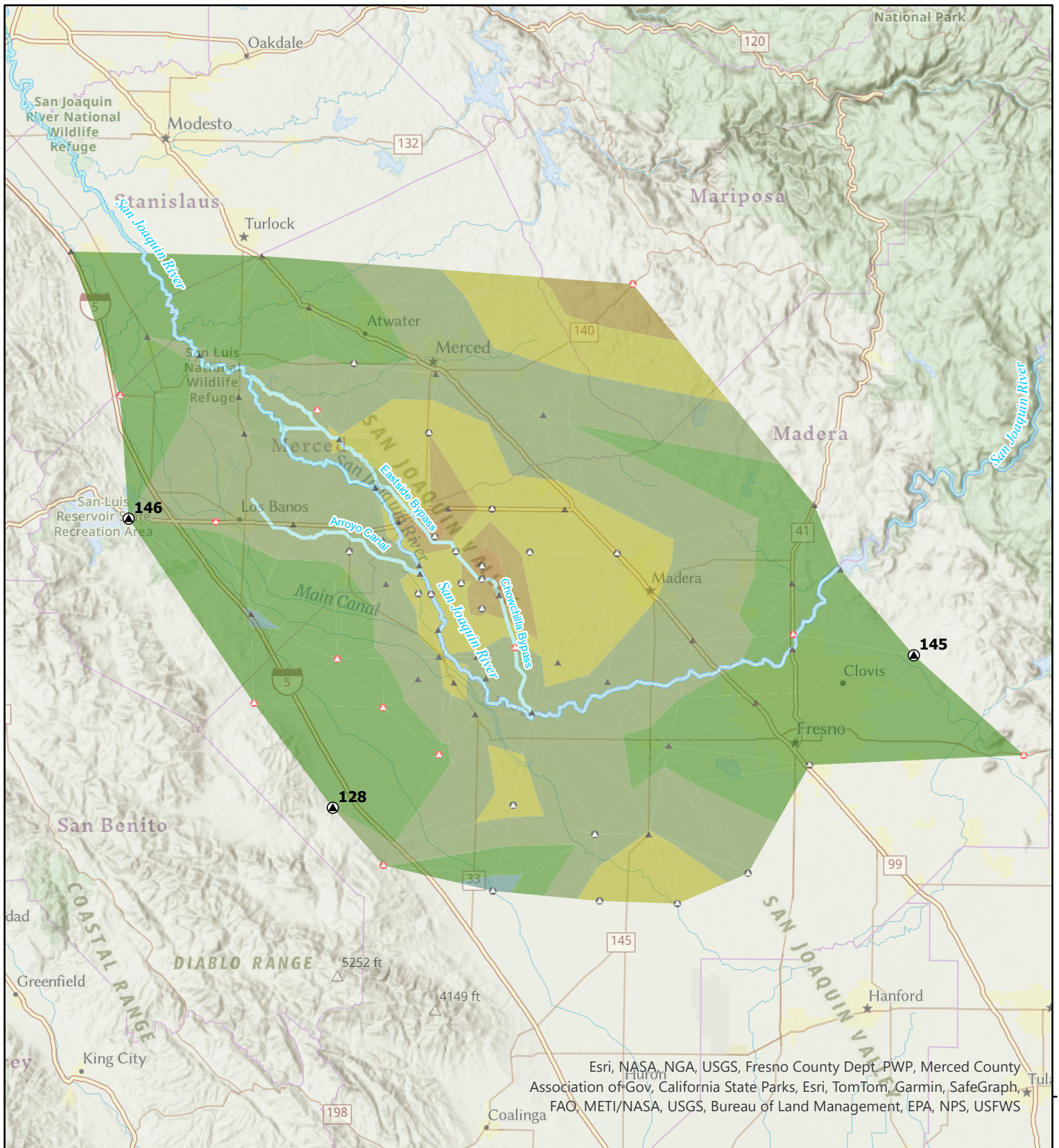
- December 2011
- Added July 2012
- Added December 2013
- Constrained to Pts #128, 145, 146



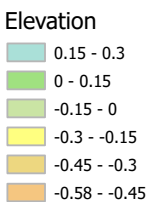
BUREAU OF RECLAMATION

Central Valley Subsidence
Elevation Change From
July 2012 to July 2024

Subsidence rates calculated by comparing survey values at monitoring points for the dates specified in the legend.

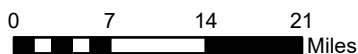


**Subsidence Rates (feet/year)
July 2023 to July 2024**



Subsidence Monitoring Points

- ▲ December 2011
- Added July 2012
- Added December 2013
- ⊙ Constrained to Pts #128, 145, 146



**BUREAU OF
RECLAMATION**

**Central Valley Subsidence
Elevation Change From
July 2023 to July 2024**

Subsidence rates calculated by comparing survey values at monitoring points for the dates specified in the legend.