
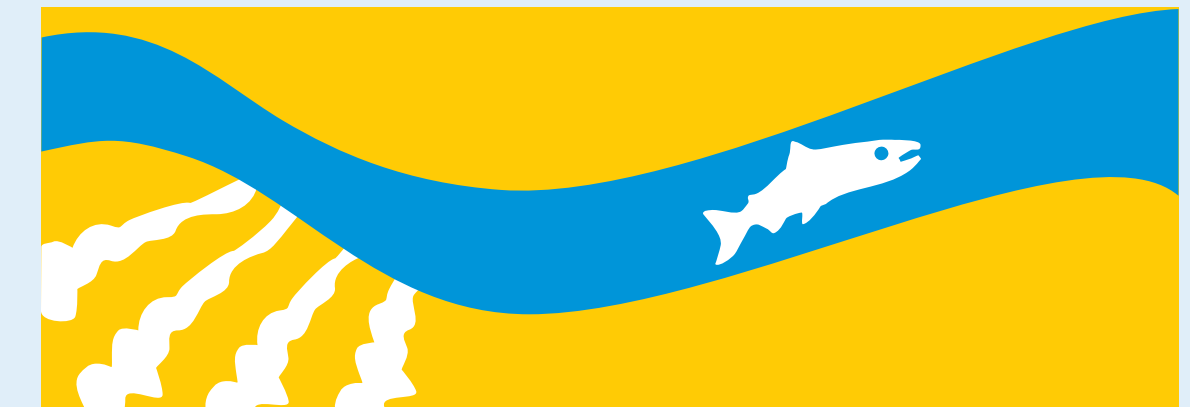


LEGEND OF REACHES

-  1 FRIANT DAM TO GRAVELLY FORD
-  2 GRAVELLY FORD TO MENDOTA DAM
-  3 MENDOTA DAM TO SACK DAM
-  4 SACK DAM TO CONFLUENCE WITH BEAR CREEK AND EASTSIDE BYPASS
-  5 CONFLUENCE OF BEAR CREEK AND EASTSIDE BYPASS TO CONFLUENCE WITH MERCED RIVER



STATION 5

Reach 1: Friant Dam to Gravelly Ford





STATION 5

Reach 2: Gravelly Ford to Mendota Dam



MENDOTA
DAM

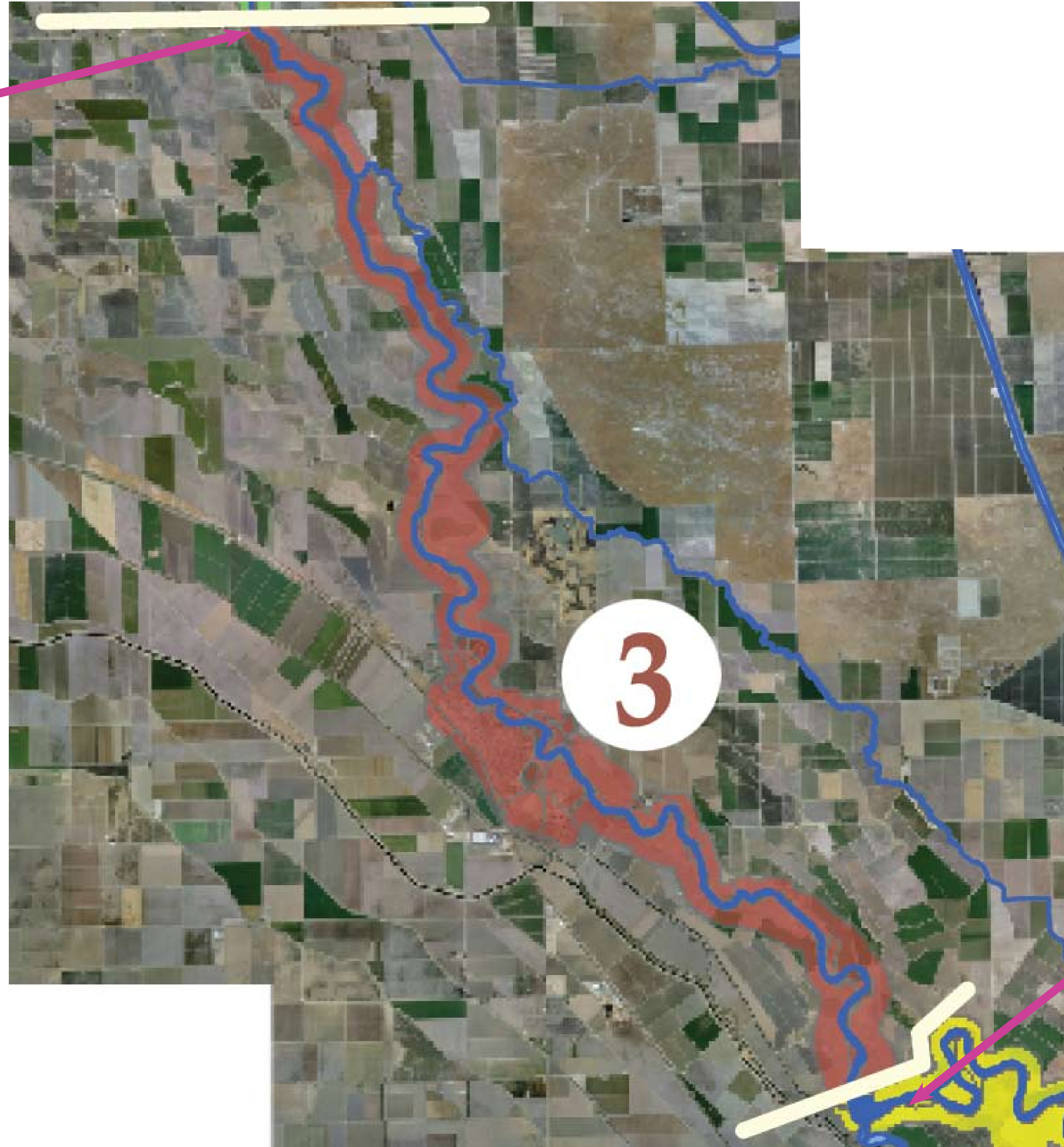
GRAVELLY
FORD



STATION 5

Reach 3: Mendota Dam to Sack Dam

SACK DAM



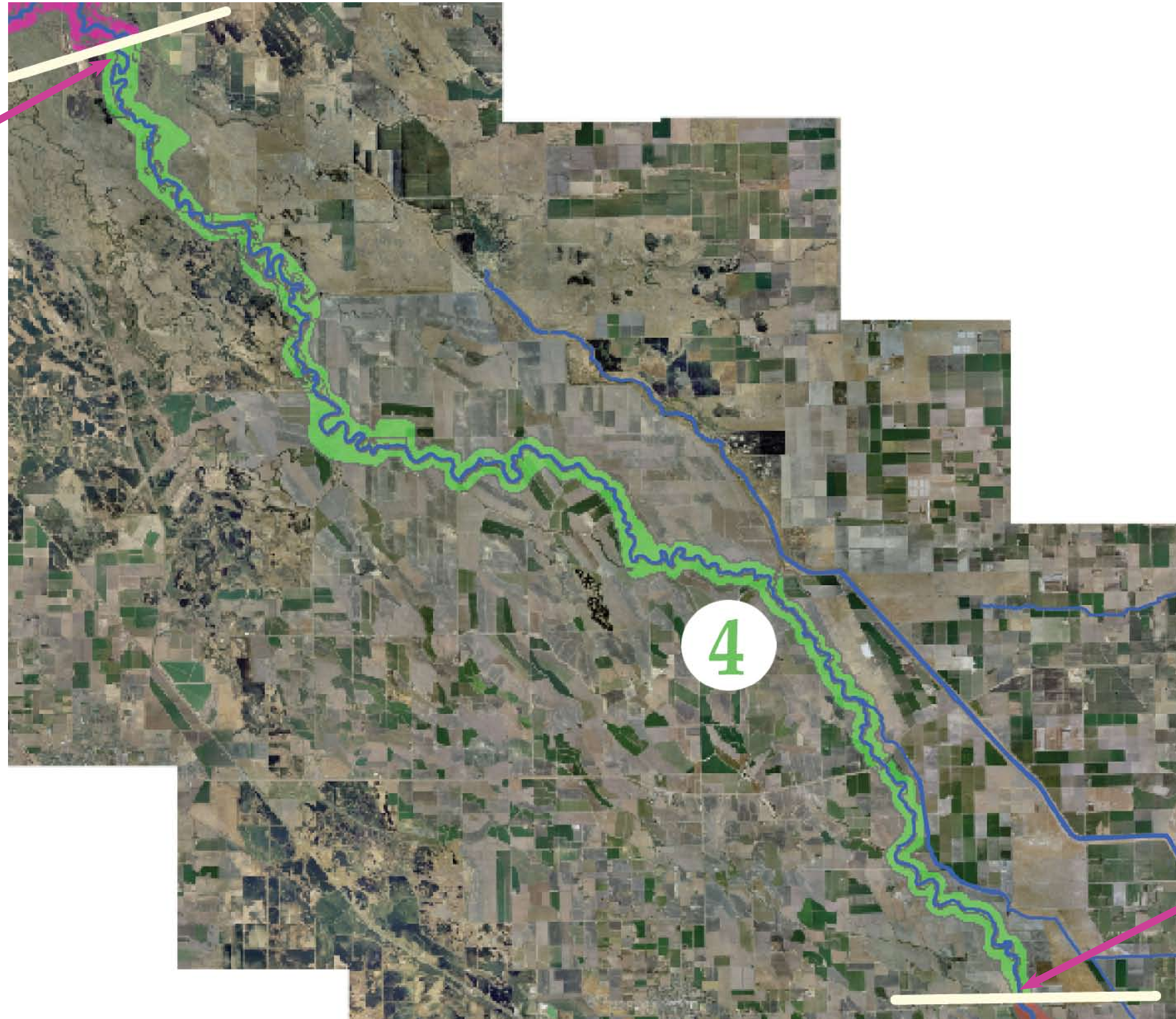
MENDOTA DAM



STATION 5

Reach 4: Sack Dam to Confluence with Bear Creek and Eastside Bypass

CONFLUENCE WITH BEAR
CREEK AND EASTSIDE BYPASS



SACK DAM



STATION 5

Reach 5: Confluence of Bear Creek and Eastside Bypass
to Confluence with Merced

CONFLUENCE
WITH MERCED



CONFLUENCE OF
BEAR CREEK AND
EASTSIDE BYPASS