



San Joaquin River Restoration Program Mendota Pool Bypass and Reach 2B Improvements Project

Project Stakeholder Meeting

October 15, 2014 1:30 pm – 4:30 pm

Firebaugh Community Center
Firebaugh, CA

Agenda

1. Introductions
2. SJRRP Updates
3. Reach 2B
 1. EIS/R Status
 2. Consensus Based Alternative
4. Design and Field Activities
 1. Geotechnical Investigations
 2. Hydraulic Conductivities
 3. Compact Bypass Design
5. 2B EIS/R Roll-Out Plan



Introductions

- **Bureau of Reclamation:**
 - Katrina Harrison, Project Manager, SJRRP
 - Blair Greimann, Hydraulic and Sedimentation Design Lead, Technical Services Center, Reclamation
 - Rebecca Kallio, Hydraulic Engineer, TSC, Reclamation
 - Lisa Zaffran, Geologist, MP-Region
- **CA Department of Water Resources:**
 - TBD
- **SJRRP Consultants:**
 - URS - Seth Gentzler, Shannon Leonard
 - MWH - Craig Moyle
- **Water District Representatives:**
 - Chris White, Reggie Hill, Randy Houk
- **Other guests**
 - To be announced

Katrina Harrison

SJRRP UPDATES



SJRRP Status - 2014

- 10j and 4d rule – allows people conducting legal activities to accidentally kill the endangered spring-run Chinook salmon
- Awarded \$14.3 million for groundwater banking
- Released 62,729 AF in WY 2014
- Shut off flows several weeks early (mid-February) to provide additional human health and safety water and some permanent crop water to the Friant Division
- Documents
 - 2014 Channel Capacity Report
 - Restoration Flow Guidelines released December 31, 2013
 - Updated Seepage Management Plan finally posted September, 2014
 - Environmental docs

SJRRP Status - Flows

- No flow releases in 2014 Restoration Year
 - Critical High Year
 - Exchange Contractor and Refuge Water Supply priorities
- Unknown Water Year Type for 2015 Restoration Year
- Flow releases could start on March 1, 2015 at the earliest
- Possible flows into the Eastside Bypass
 - 7/9 flowage easements on private lands complete



SJRRP Status - 2015

- Reach 4B project starting up again
 - Landowner meetings will be scheduled in 2015
- Possible Temporary Arroyo Canal Fish Barrier
 - Construction in 2015
- Friant-Kern Canal Capacity Correction
 - Design and Contracting in 2015
- Long-term Recapture and Recirculation EIS/R public meetings
 - Late 2014 / early 2015

Seth Gentzler / Shannon Leonard

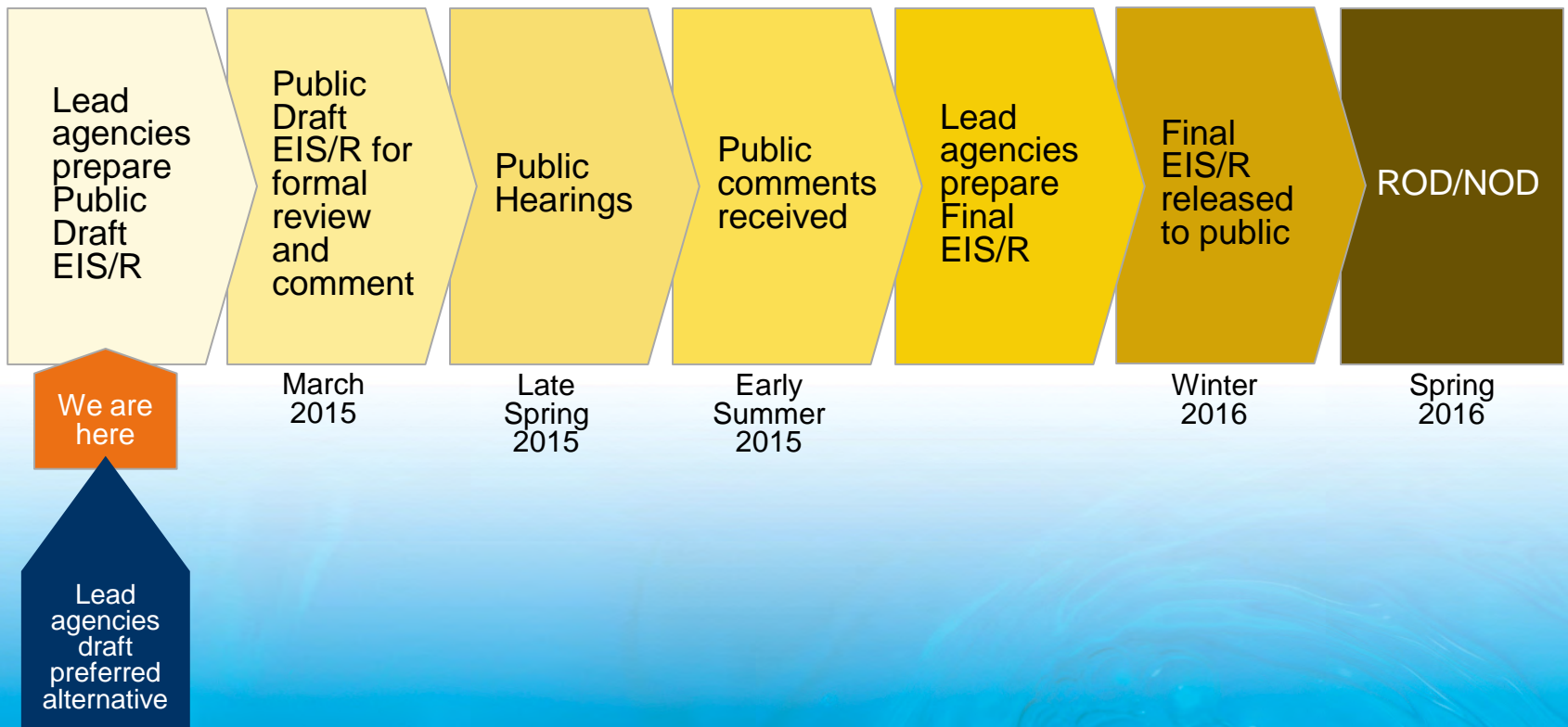
REACH 2B EIS/R STATUS

Reach 2B EIS/R Status

- Working on administrative drafts of EIS/R
- Public Draft EIS/R Anticipated for March 2015 release
- Will contain a preferred alternative

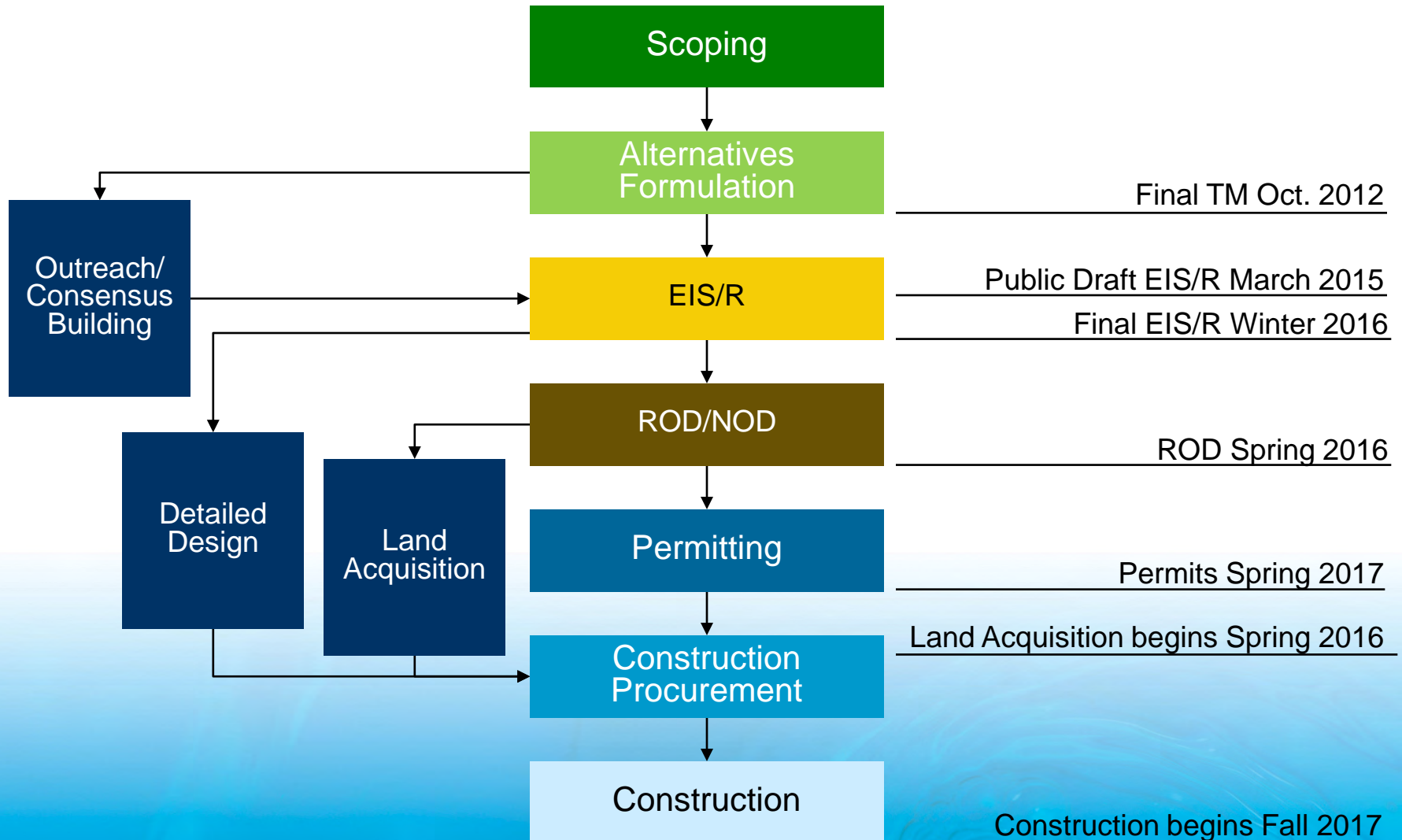
Reach 2B Project Update

EIS/R Process and Schedule



Reach 2B Project Update

Project Process and Schedule



Reach 2B Project Alternatives

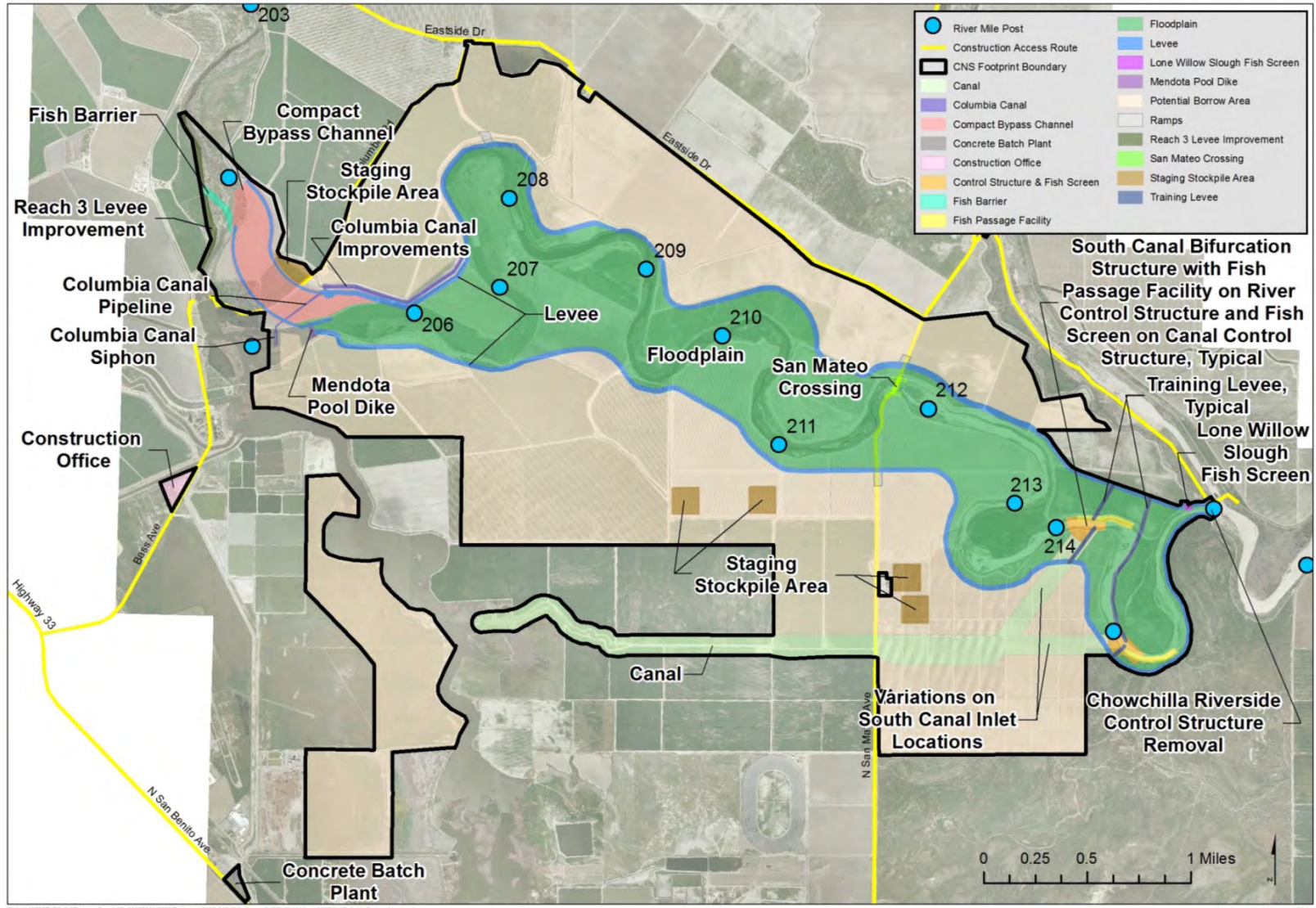
- Four Alternatives presented in the Reach 2B Project Description TM
 - Compact Bypass with Narrow Floodplain and South Canal
 - Compact Bypass with Wide Floodplain and Bifurcation Structure
 - Fresno Slough Dam with Narrow Floodplain and Short Canal
 - Fresno Slough Dam with Wide Floodplain and North Canal



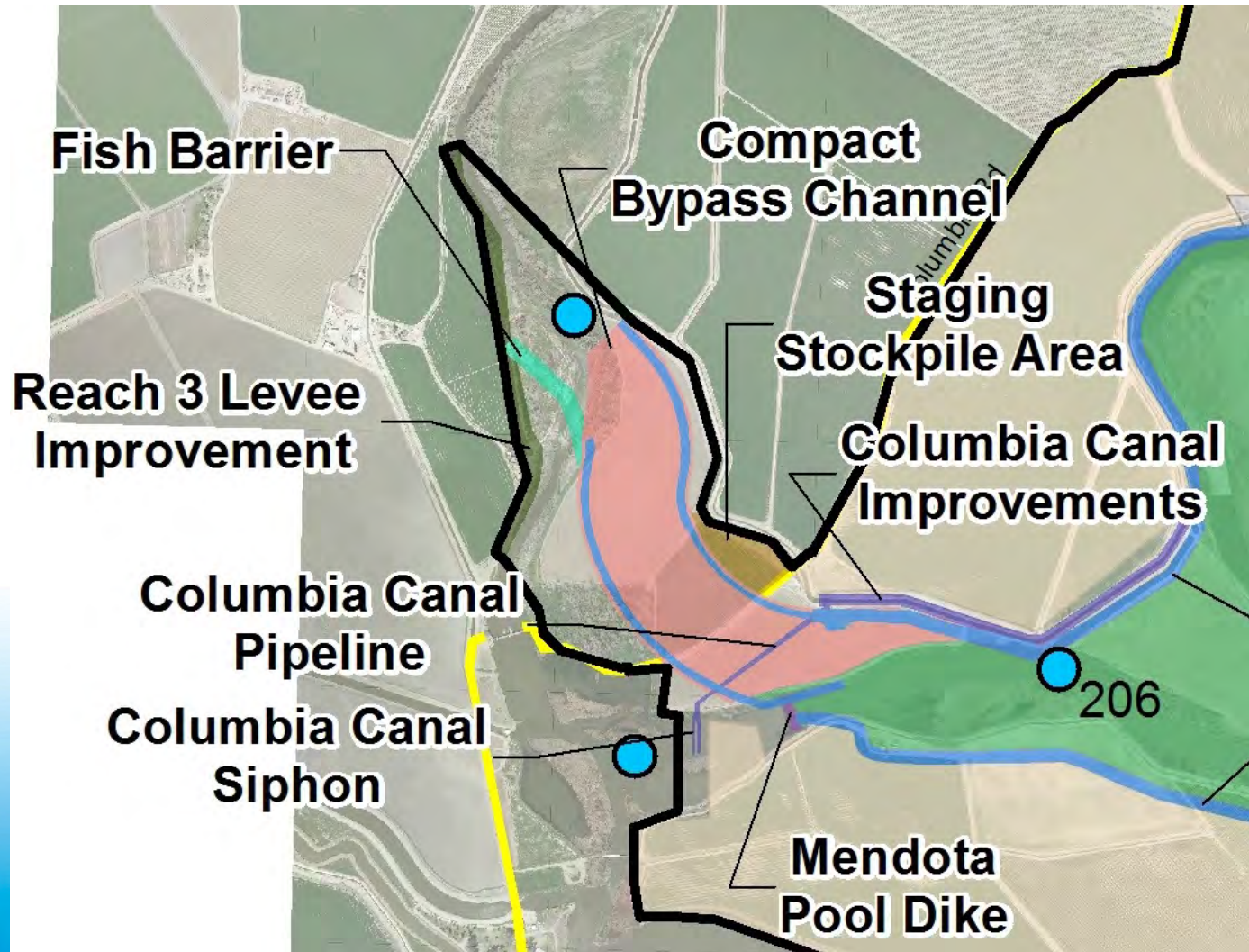
Compact Bypass with Narrow Floodplain and South Canal

- Compact Bypass
 - New channel and structures capable to convey up to 4,500 cfs of Restoration Flows around Mendota Pool
- Narrow Floodplain
 - Floodplain habitat approx. 3,000 feet wide on average
- South Canal
 - South Canal and structures to convey up to 2,500 cfs from Reach 2B to Mendota Pool (includes fish passage facility)
- Other
 - Removal of Chowchilla riverside control structure

Compact Bypass with Narrow Floodplain and South Canal



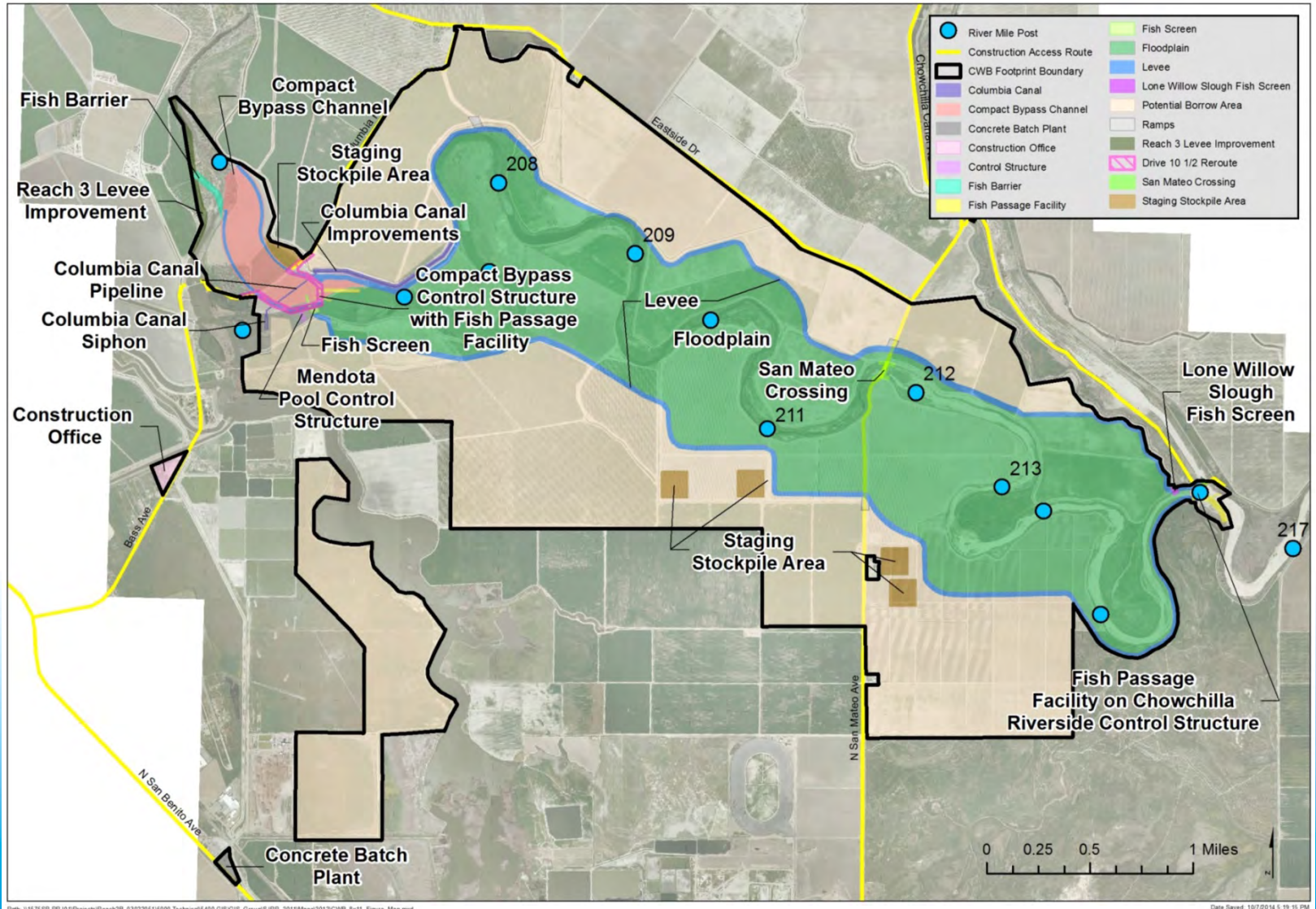
Compact Bypass with Narrow Floodplain and South Canal



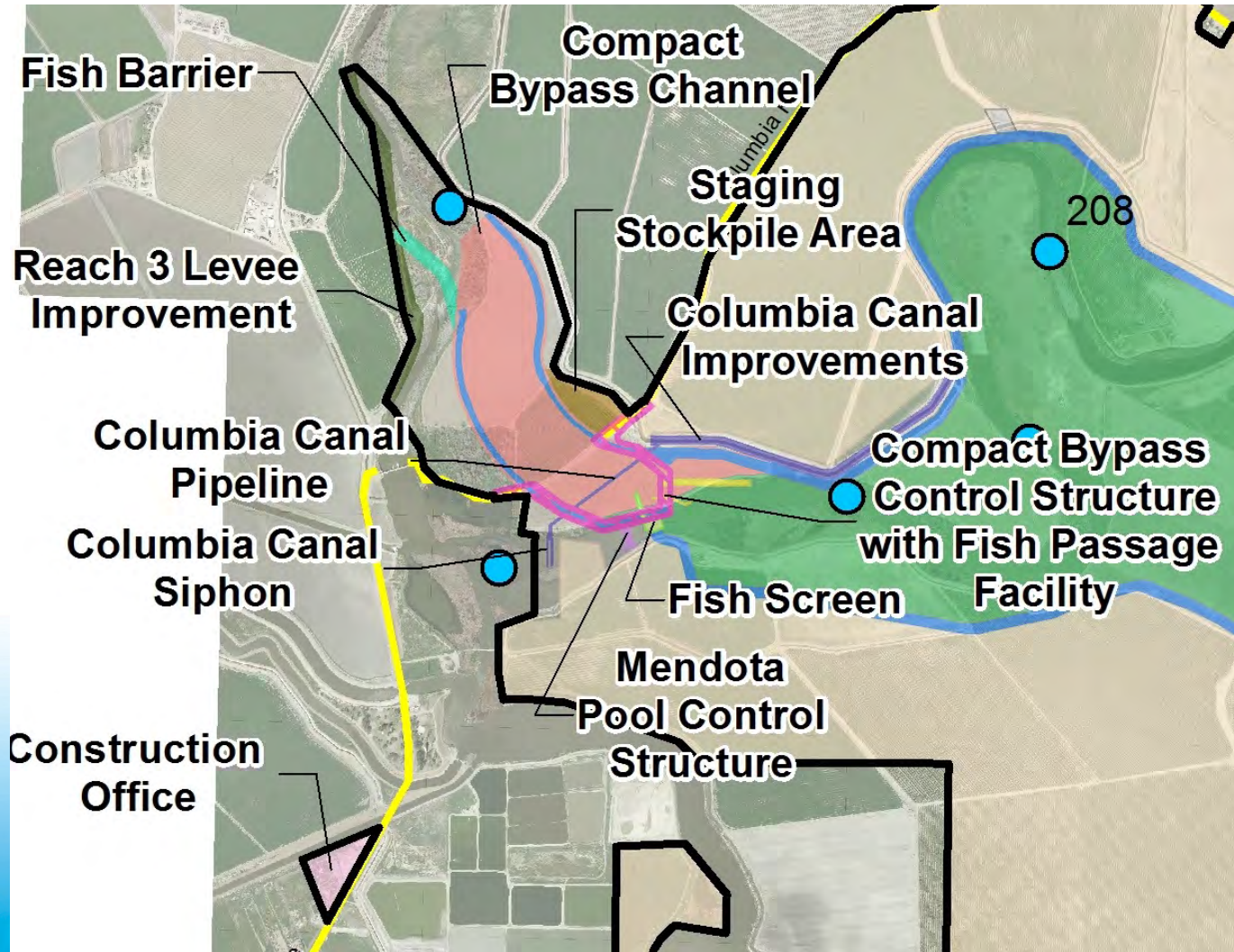
Compact Bypass with Wide Floodplain and Bifurcation Structure

- Compact Bypass
 - New channel and structures capable to convey up to 4,500 cfs of Restoration Flows around Mendota Pool
- Wide Floodplain
 - Floodplain habitat approx. 4,200 feet wide on average
- Bifurcation Structure
 - Mendota Pool control structure to convey up to 2,500 cfs from Reach 2B to Mendota Pool
- Other
 - Fish passage facility at Compact bypass control structure
 - Fish passage facility at Chowchilla riverside control structure

Compact Bypass with Wide Floodplain and Bifurcation Structure



Compact Bypass with Wide Floodplain and Bifurcation Structure

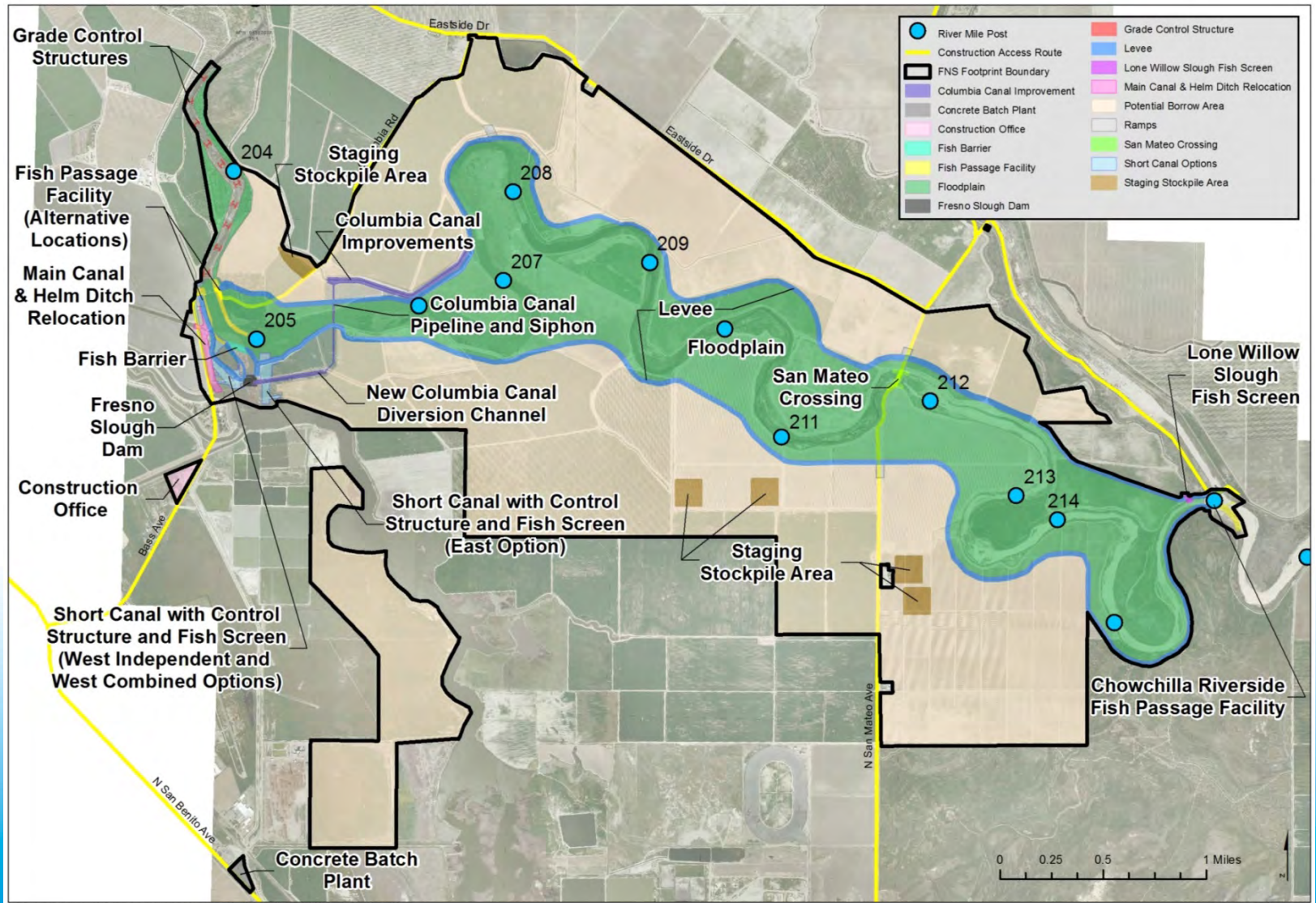




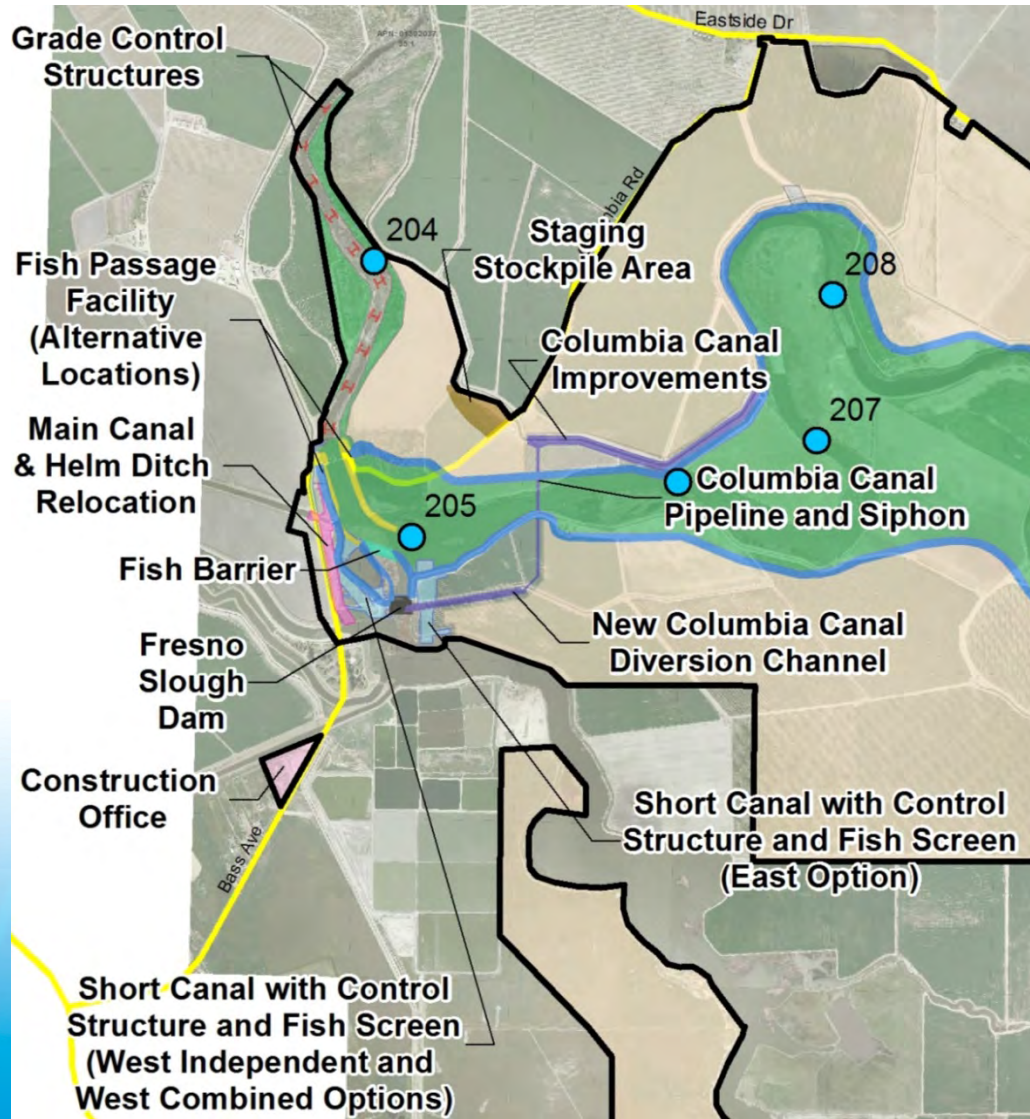
Fresno Slough Dam with Narrow Floodplain and Short Canal

- Fresno Slough Dam
 - New dam to restrict Mendota Pool to Fresno Slough so that up to 4,500 cfs of Restoration Flows can be conveyed around Mendota Pool
 - Mendota Dam fish passage facility
- Narrow Floodplain
 - Floodplain habitat approx. 3,000 feet wide on average
- Short Canal
 - Short Canal and structures to convey up to 2,500 cfs from Reach 2B to Mendota Pool
- Other
 - Fish passage facility at Chowchilla riverside control structure

Fresno Slough Dam with Narrow Floodplain and Short Canal



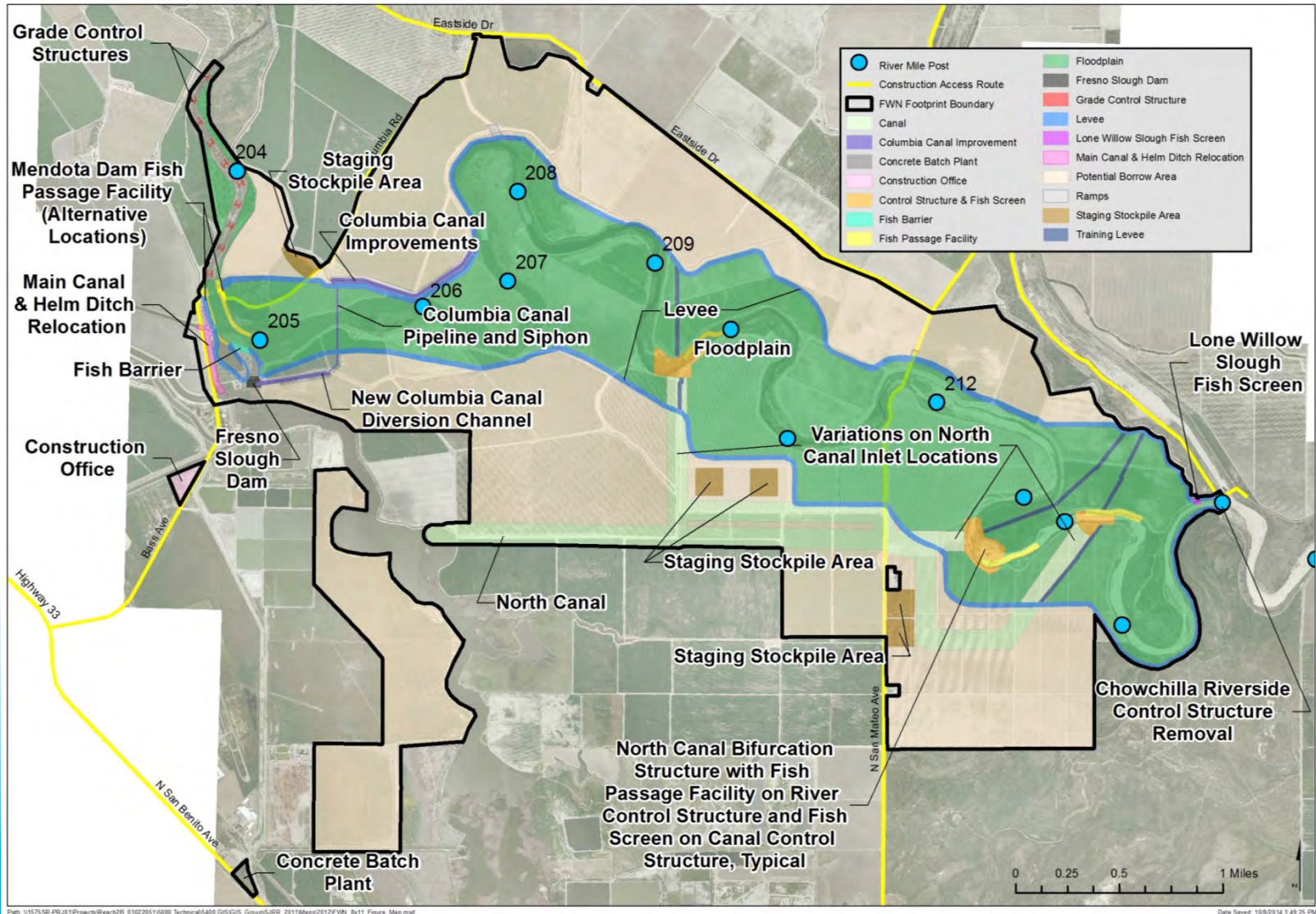
Fresno Slough Dam with Narrow Floodplain and Short Canal



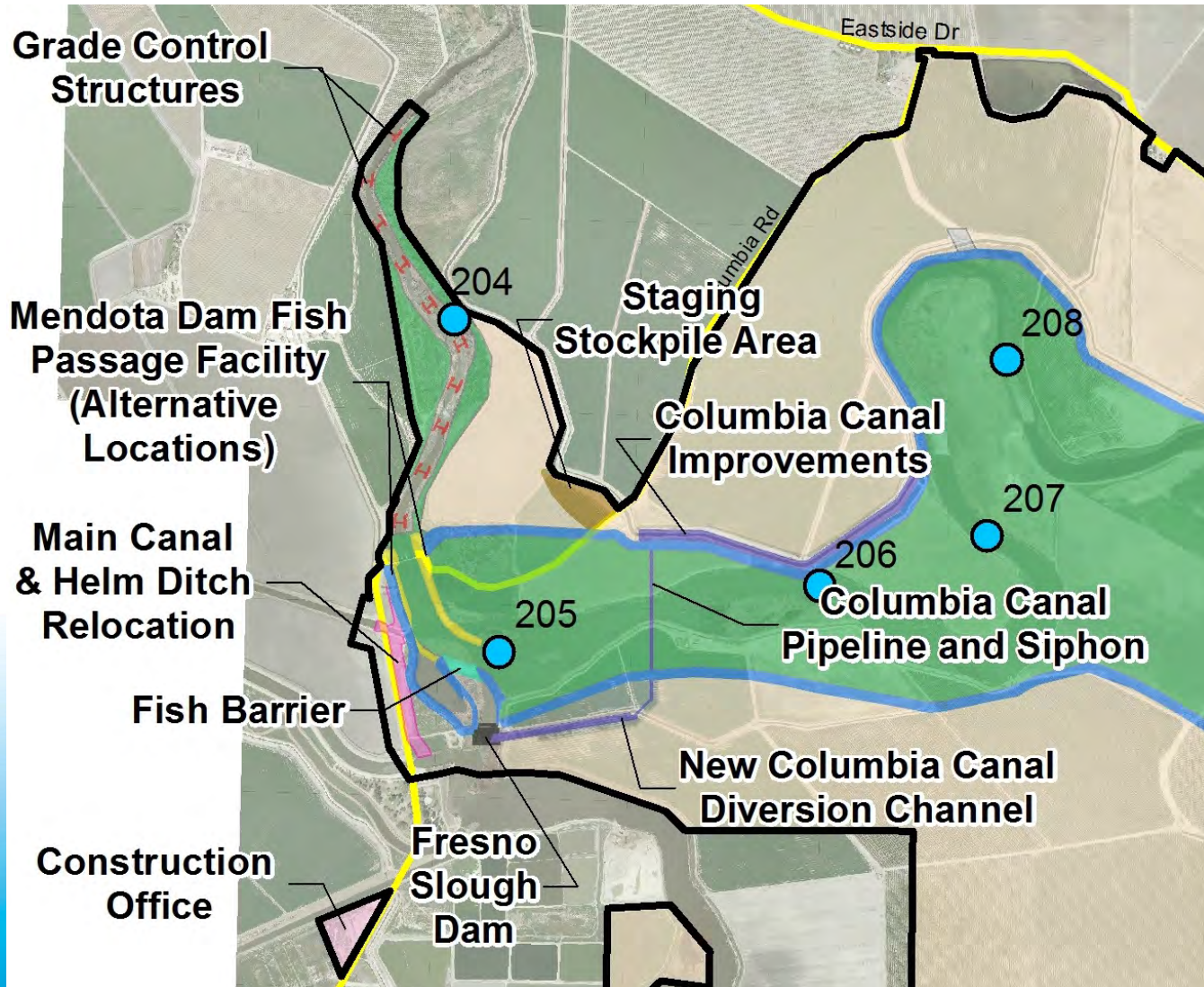
Fresno Slough Dam with Wide Floodplain and North Canal

- Fresno Slough Dam
 - New dam to restrict Mendota Pool to Fresno Slough so that up to 4,500 cfs of Restoration Flows can be conveyed around Mendota Pool
 - Mendota Dam fish passage facility
- Wide Floodplain
 - Floodplain habitat approx. 4,200 feet wide on average
- North Canal
 - North Canal and structures to convey up to 2,500 cfs from Reach 2B to Mendota Pool (with fish passage facility)
- Other
 - Removal of Chowchilla riverside control structure

Fresno Slough Dam with Wide Floodplain and North Canal



Fresno Slough Dam with Wide Floodplain and North Canal



Katrina Harrison

REACH 2B PREFERRED ALTERNATIVE

Reach 2B Preferred Alternative

- Based on landowner consensus based alternative
- Updated based on discussions with landowners and more information about infrastructure
- Tentatively Preferred Alternative:
 - Compact Bypass
 - Modified levee alignment – between narrow and wide
 - Bifurcation Structures for delivery to Mendota Pool

Reach 2B Preferred Alternative

- Fresno Slough Dam
 - Reduces Mendota Pool Volume
 - Changes to Operation
 - Mendota Dam recently repaired
- Compact Bypass
 - Landowner Consensus-Based Alternative
 - Larger floodplain
 - Same Delta Mendota Canal / Mendota Pool operations
- Public comment to date indicates Compact Bypass is Preferred

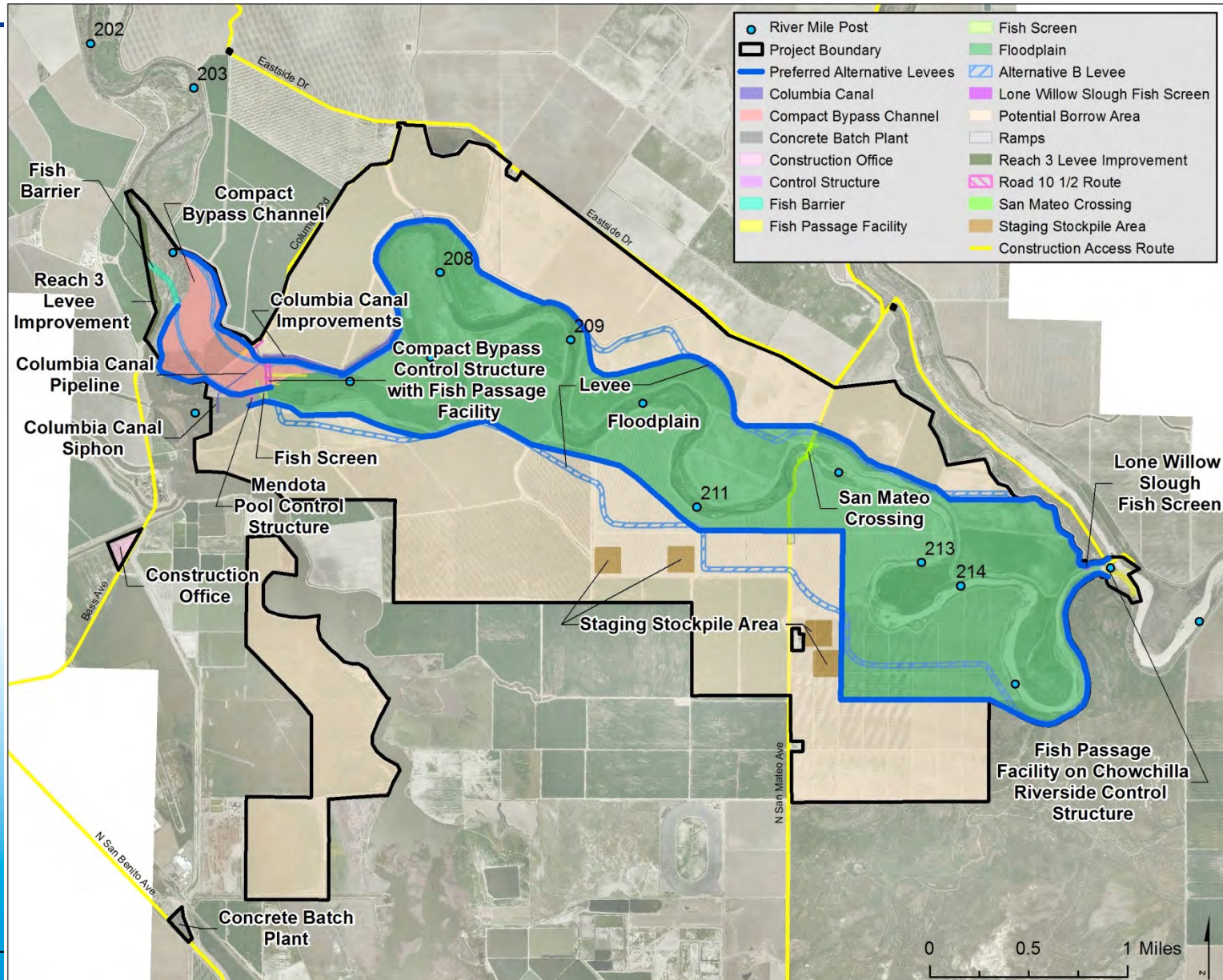
Reach 2B Preferred Alternative

- Narrow Levee Alignment
 - Minimizes land out of production
 - Landowner Consensus-Based Alternative
- Wide Levee Alignment
 - Maximizes fish habitat
- Some landowners willing to sell land outside of Narrow Levee Alignment
- Preferred Levee Alignment is Narrow, with areas landowners are willing to sell
- Slightly (~20 acres) smaller than Wide Levee Alignment

Reach 2B Preferred Alternative

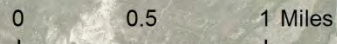
- South or North Canal Options
 - Create access issues to farms – would require bridges
 - Take land out of production away from the river
 - Could move river side of the Chowchilla Bifurcation Structure downstream
 - Minimizes fish obstacles
 - Impacts flood operations
- Bifurcation Structures
 - Minimize land out of production
- Public comment to date indicates Bifurcation Structures are preferred

Reach 2B Preferred Alternative



- | | |
|--------------------------------|----------------------------------|
| ● River Mile Post | ■ Fish Screen |
| ▭ Project Boundary | ■ Floodplain |
| — Preferred Alternative Levees | ▭ Alternative B Levee |
| ■ Columbia Canal | ■ Lone Willow Slough Fish Screen |
| ■ Compact Bypass Channel | ■ Potential Borrow Area |
| ■ Concrete Batch Plant | ▭ Ramps |
| ■ Construction Office | ■ Reach 3 Levee Improvement |
| ■ Control Structure | ▭ Road 10 1/2 Route |
| ■ Fish Barrier | ■ San Mateo Crossing |
| ■ Fish Passage Facility | ■ Staging Stockpile Area |
| | ■ Construction Access Route |

Draft



Reach 2B Construction Schedule

- Must sequence project due to funding stream
- Preliminary schedule, based on Framework for Implementation:
 - Compact Bypass and structures to be constructed first
 - 2017-2020
 - Reach 2B Levees second
 - 2020-2025
- Design currently ongoing for Compact Bypass

Lisa Zafran

GEOTECHNICAL INVESTIGATIONS

Katrina

REACH 2B EIS/R ROLLOUT

Reach 2B EIS/R Rollout

- March 2015 Public Draft Environmental Impact Statement / Environmental Impact Report
- Public hearings on Draft EIS/R ~ April 2015
- 60 day comment period

Follow-Up

Review Assignments & Action Items

Questions?





Thank You

Katrina Harrison
Reach 2B Project Manager
916-978-5465
kharrison@usbr.gov

www.restoresjr.net