

68.96 Farm bridge

69.23 Rd. 204

69.48 St. Johns River Siphon

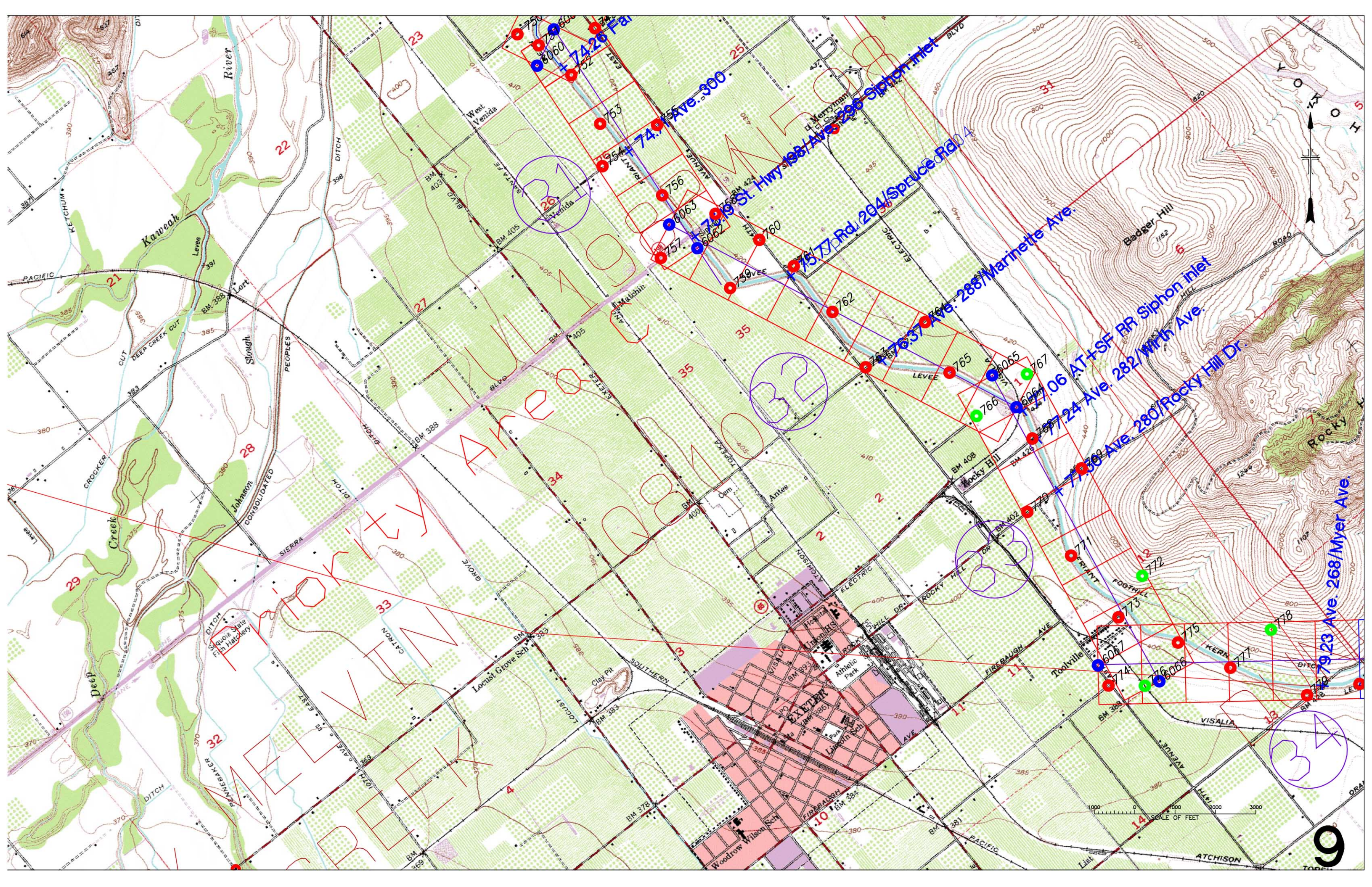
70.28 Ave. 328

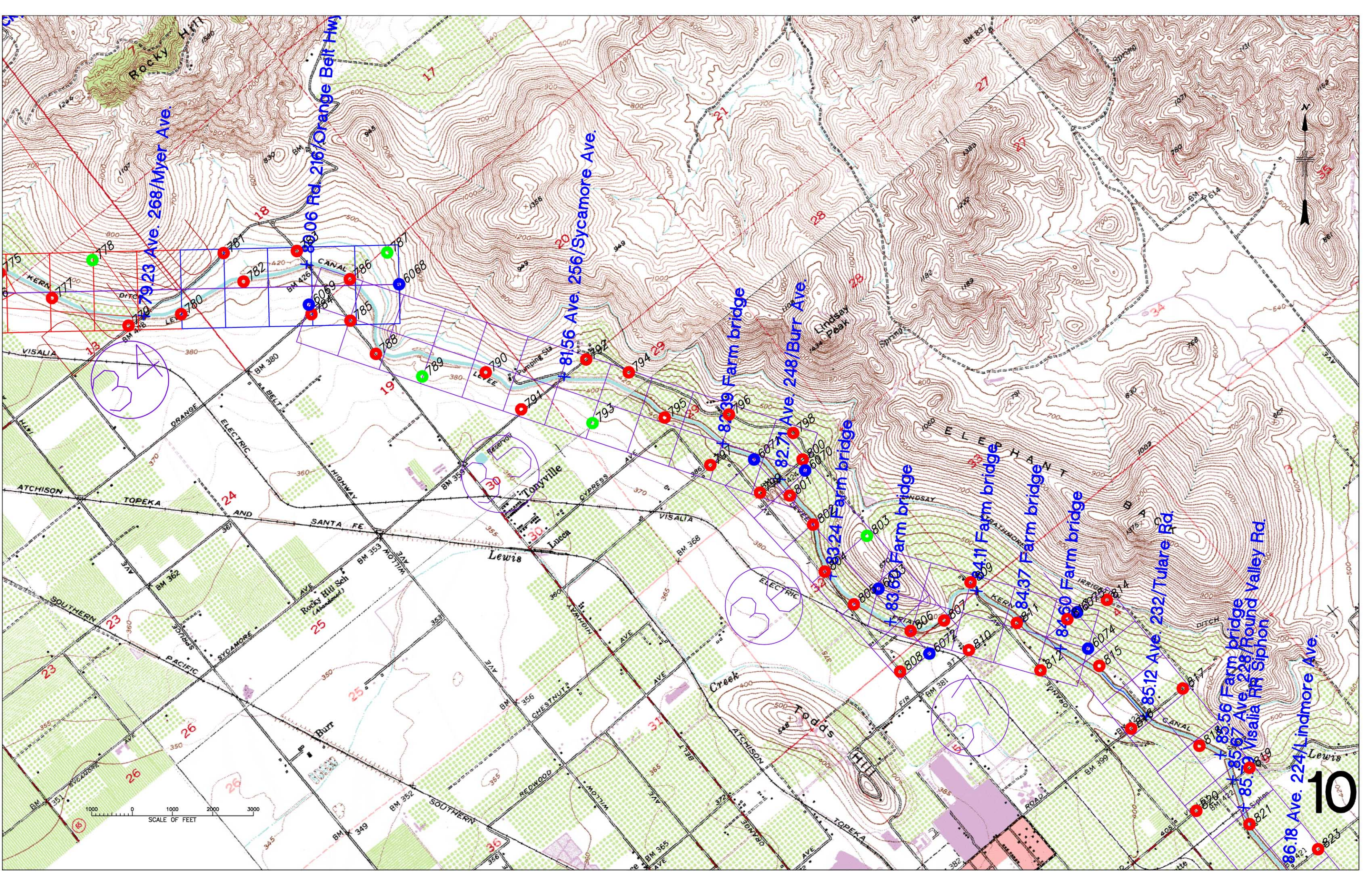
71.8 Ave. 322

72.5 St. Hwy. 245/Ave. 314

73.51 Farm bridge

73.78 St. Hwy. 245 over siphon





79.23 Ave. 268/Myer Ave.

80.06 Rd. 216/Orange Belt Hw

81.56 Ave. 256/Sycamore Ave.

82.71 Ave. 248/Burr Ave.

83.24 Farm bridge

83.60 Farm bridge

84.11 Farm bridge

84.37 Farm bridge

85.12 Ave. 232/Tulare Rd.

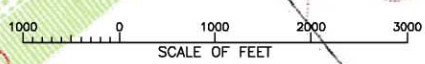
85.56 Farm bridge

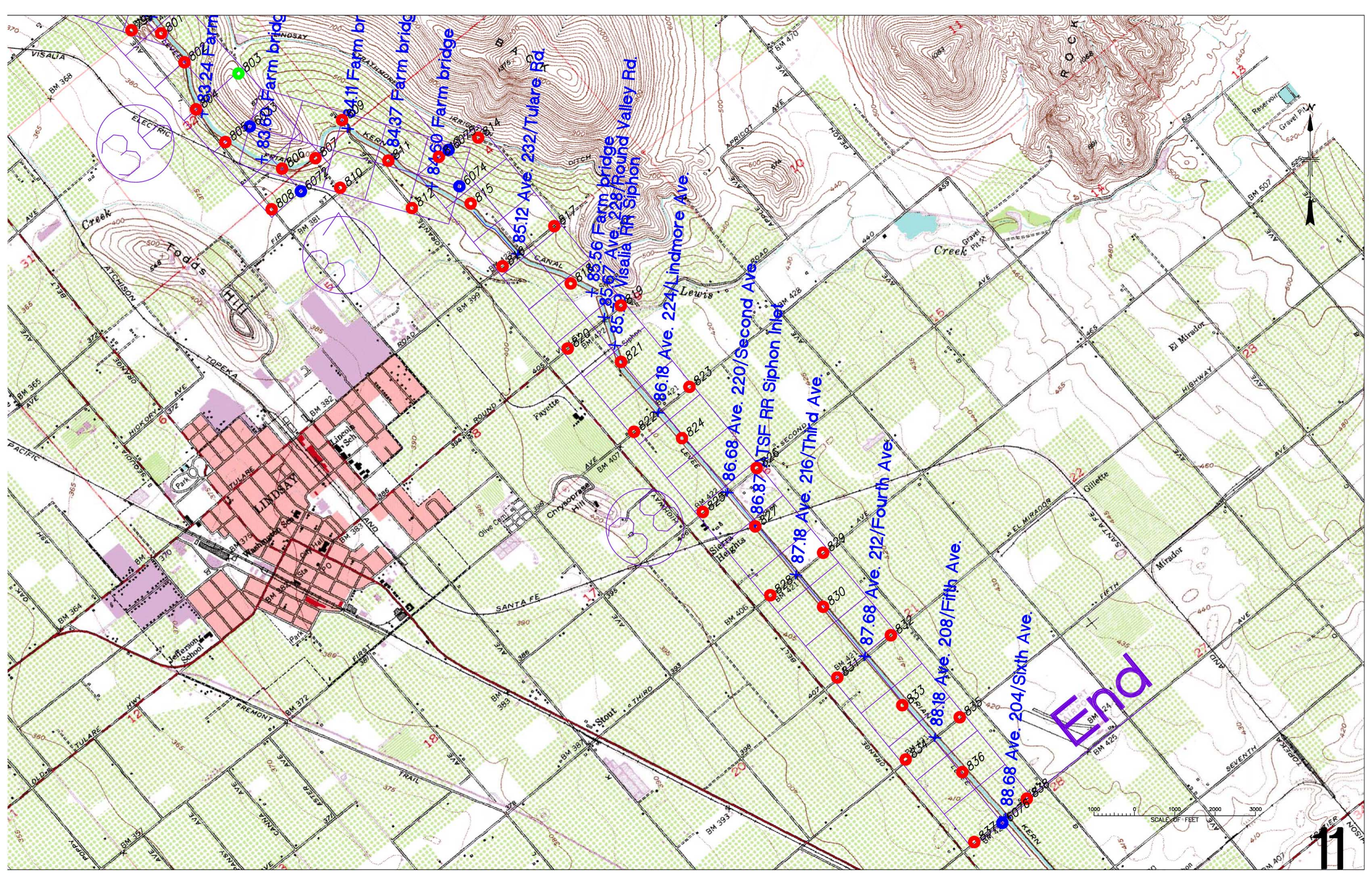
85.67 Ave. 228/Round Valley Rd.

85.79 Visalia RR Siphon

86.18 Ave. 224/Lindmore Ave.

10





End