



Field Activity Advisory Reach 4B, Eastside, and Mariposa Bypasses Geotechnical Investigations – Standard and Cone Penetration Tests

September through November 2011

This notice is to inform you that the San Joaquin River Restoration Program (SJRRP) plans to conduct geotechnical investigations at selected locations of Reach 4B of the San Joaquin River, and the Eastside and Mariposa Bypasses beginning September 27, 2011.

Who: Federal Bureau of Reclamation

What: Reclamation will perform geotechnical investigations of river and bypass crossings to collect subsurface soil data to support the future design modifications or replacement of structures such as control structures and crossings. The investigations consist of Standard Penetration Test (SPT) drill holes and Cone Penetration Test (CPT) borings. In addition to providing detailed soil samples for laboratory use, these drillings also offer important information on soil density, groundwater depths, and geologic logs. SPT drill holes will have a maximum diameter of one foot, and utilize a truck- or track-mounted drill rig fitted with hollow-stem auger. The CPT is a truck-mounted rod that is pushed into the soil. The rod provides continuous soil profile and characteristics via a ratio of pore pressure and resistance measurements. Both CPT and SPT data will provide a soil profile and geotechnical engineering data for bearing capacity and engineering design needs. All borings have a target depth of 30 to 40 feet. Additional support vehicles and trailers will be used to haul drilling equipment and associated materials. The drill rig and support vehicles will occupy an approximate area of 50 by 150 feet, and drilling operations will not block traffic on roads or impede farming activities.

When: Underground Service Alert (USA Dig) – September 27-29

CPT Borings – October 1 – 6

SPT Drillings – October 11 -20, and October 25 – November 3

Note: Unfavorable weather conditions may require rescheduling the surveys. All geotechnical investigations are planned to be conducted between the 7 a.m. to 5 p.m.

Where: The San Joaquin River at the Reach 4B headgates, the Sand Slough Control Structure, the Mariposa Bypass and Eastside Bypass Control Structures; and a private road crossing approximately 3.25 miles downstream of the Reach 4B headgates.

If you have questions, please contact the SJRRP Landowner Coordinator, Craig Moyle, at:

Craig Moyle, Landowner Coordinator

Office (operator): 916-924-8844

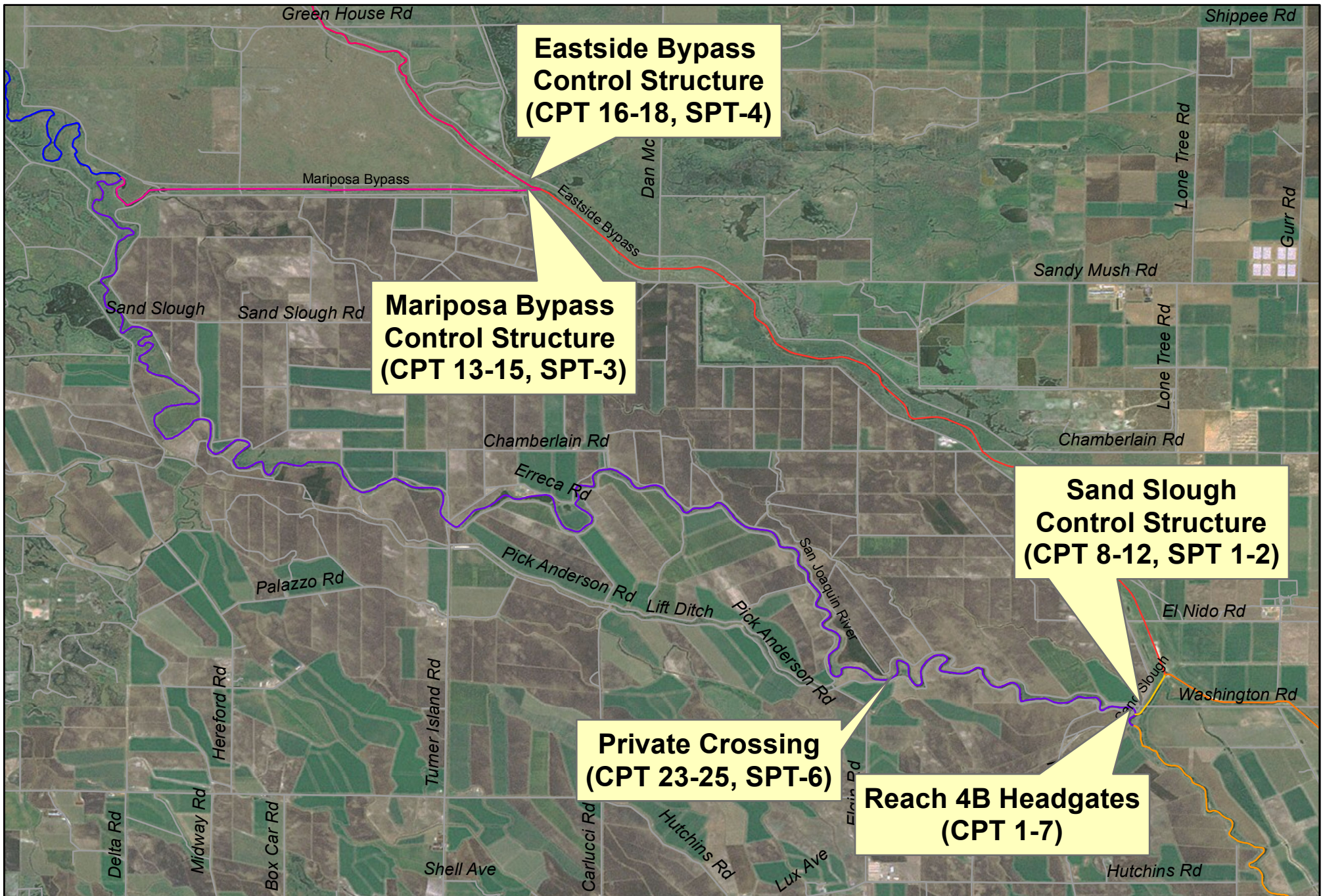
Office (direct line): 916-418-8248

Mobile: 916-642-6383

Fax: 916-924-9102

Email: craig.moyle@mwhglobal.com

For more information, please visit the SJRRP Web site at www.restoresjr.net



**Eastside Bypass
Control Structure
(CPT 16-18, SPT-4)**

**Mariposa Bypass
Control Structure
(CPT 13-15, SPT-3)**

**Sand Slough
Control Structure
(CPT 8-12, SPT 1-2)**

**Private Crossing
(CPT 23-25, SPT-6)**

**Reach 4B Headgates
(CPT 1-7)**

**Reclamation Geotechnical Survey
Key Map**



Last Updated: September 9, 2011

