



Bureau of Reclamation
2800 Cottage Way, MP-170
Sacramento, Calif. 95825-1898

Subsidence Monitoring Survey Field Advisory December 10, 2015

The Bureau of Reclamation will conduct its end of year land subsidence surveys the week of December 14. The surveys include measurements of 73 control points/survey benchmarks at various roads, bridges and canal structures within a 4,000 square-mile area that overlay the Restoration Area. Initiated in 2011, the surveys assist implementing agencies of the San Joaquin River Restoration Program and other stakeholders in the monitoring of changes in land elevation and evaluate how such changes effect, among other things, Program activities, river and canal conveyance, and facilities of the State Plan of Flood Control. To monitor the rate of subsidence over time, Reclamation conducts surveys of the established network on a bi-annual basis, in July and December. Results of the monitoring are included in a Subsidence Monitoring Technical Memorandum available on the Restoration Program website.

Who: Bureau of Reclamation

What: A team of 5 one-person survey crews will visit survey monuments by vehicle and record the elevation using static GPS methods. One survey crew serves as the ground control point for data collection at other sites. Most survey locations are in the public right-of-way and will not impede vehicle traffic.

Where: The western edge of the survey area is roughly bounded by Interstate 5 from the city of Patterson to a point due west of the city of Kingsburg. The southern boundary extends eastward to a point adjacent to the Friant-Kern Canal due east of the city of Sanger. The eastern edge of the survey area extends northwest along the Sierra Nevada foothills to a point approximately 60 miles due east of the city of Patterson (See Figure 1).

When: December 14 to December 18, 2015. Surveys will be completed during daytime hours.

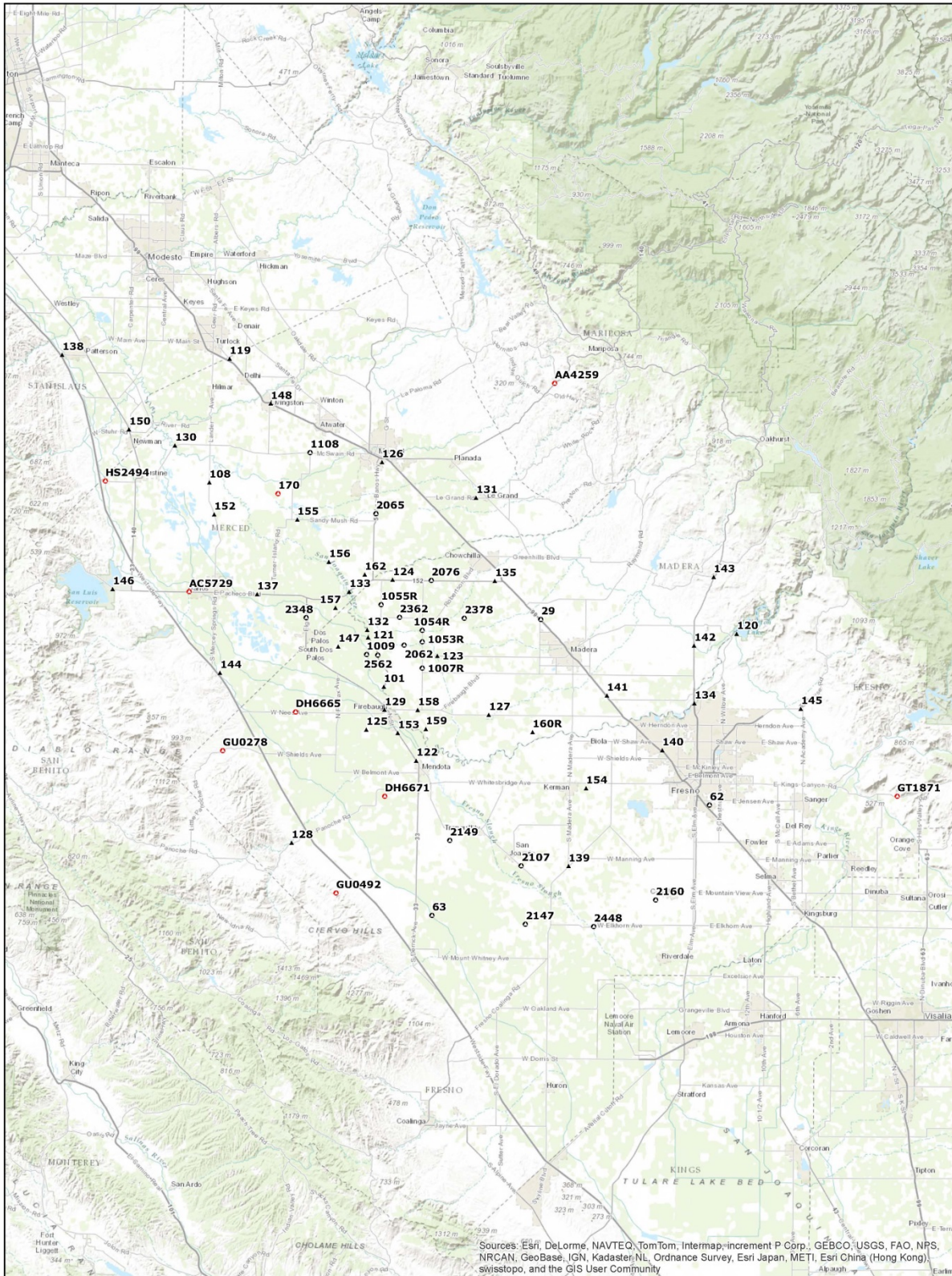
For more information: Questions about the SJRRP's field activities on public and private land should be directed to the SJRRP Landowner Coordinator using the information provided below.

Craig Moyle, Landowner Coordinator
Office (direct line): 916-418-8248
Mobile: 916-642-6383
Email: Craig.Moyle@mwhglobal.com

Contact the SJRRP Hotline, 916-978-4398, or email RestorationFlows@restoresjr.net if you see any problems or have any concerns.

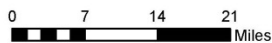
**For more information, please visit the SJRRP Web site at www.restoresjr.net.
Field Advisories for activities are available at
www.restoresjr.net/activities/field/index.html**

Figure 1: GPS Stations



GPS Coordinates

- ▲ GPS Point-December 2011
- GPS Point-added July 2012
- ◐ GPS Point-added December 2013



RECLAMATION
Managing Water in the West

Reclamation Subsidence
GPS Stations

Subsidence rates calculated by comparing survey values at GPS Stations for the dates specified in the legend.